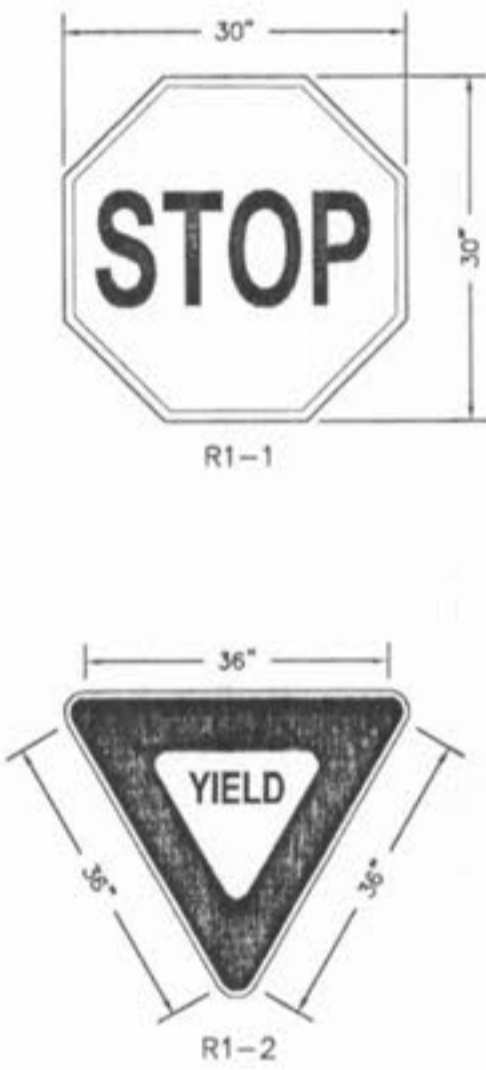
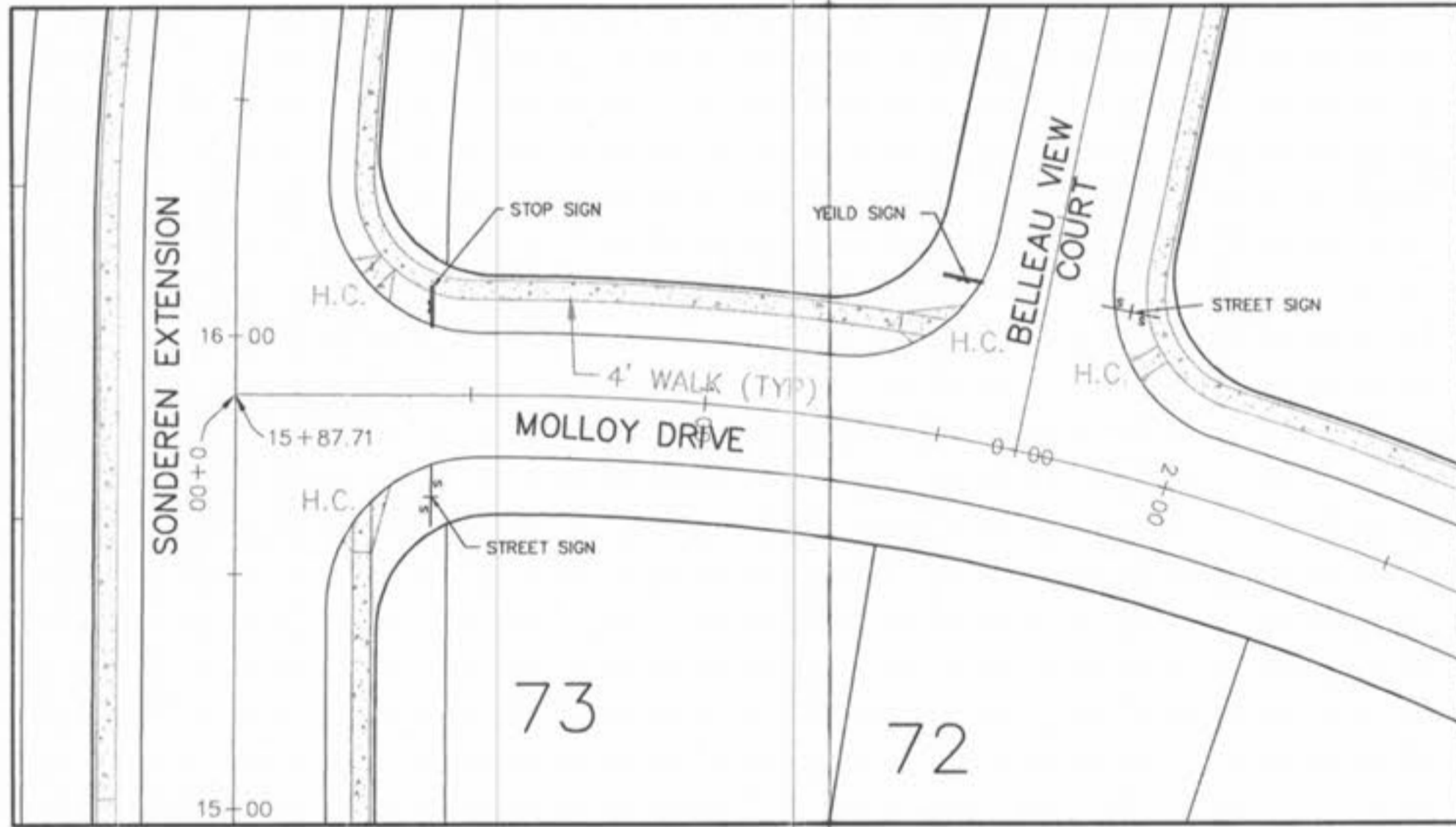
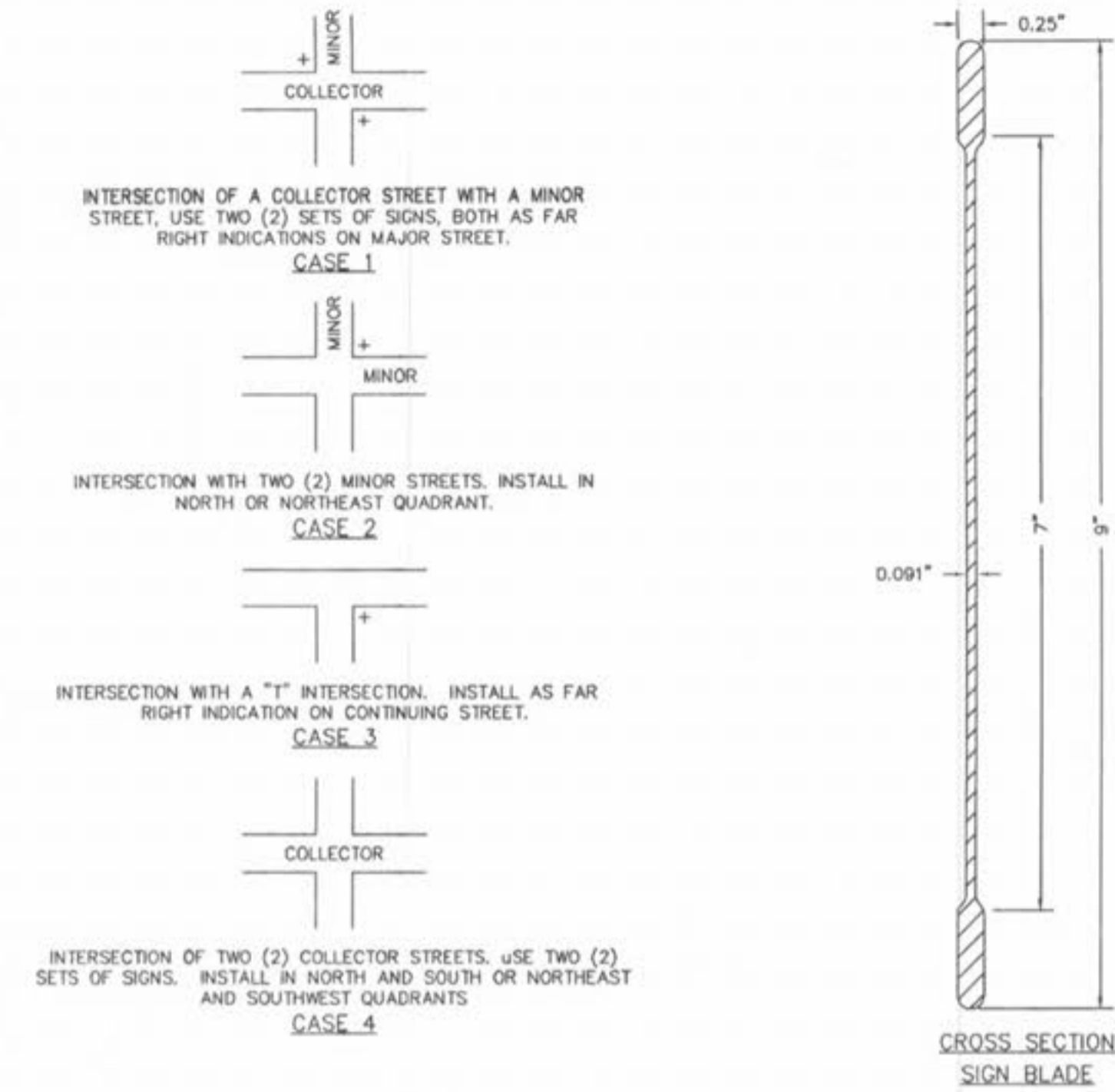
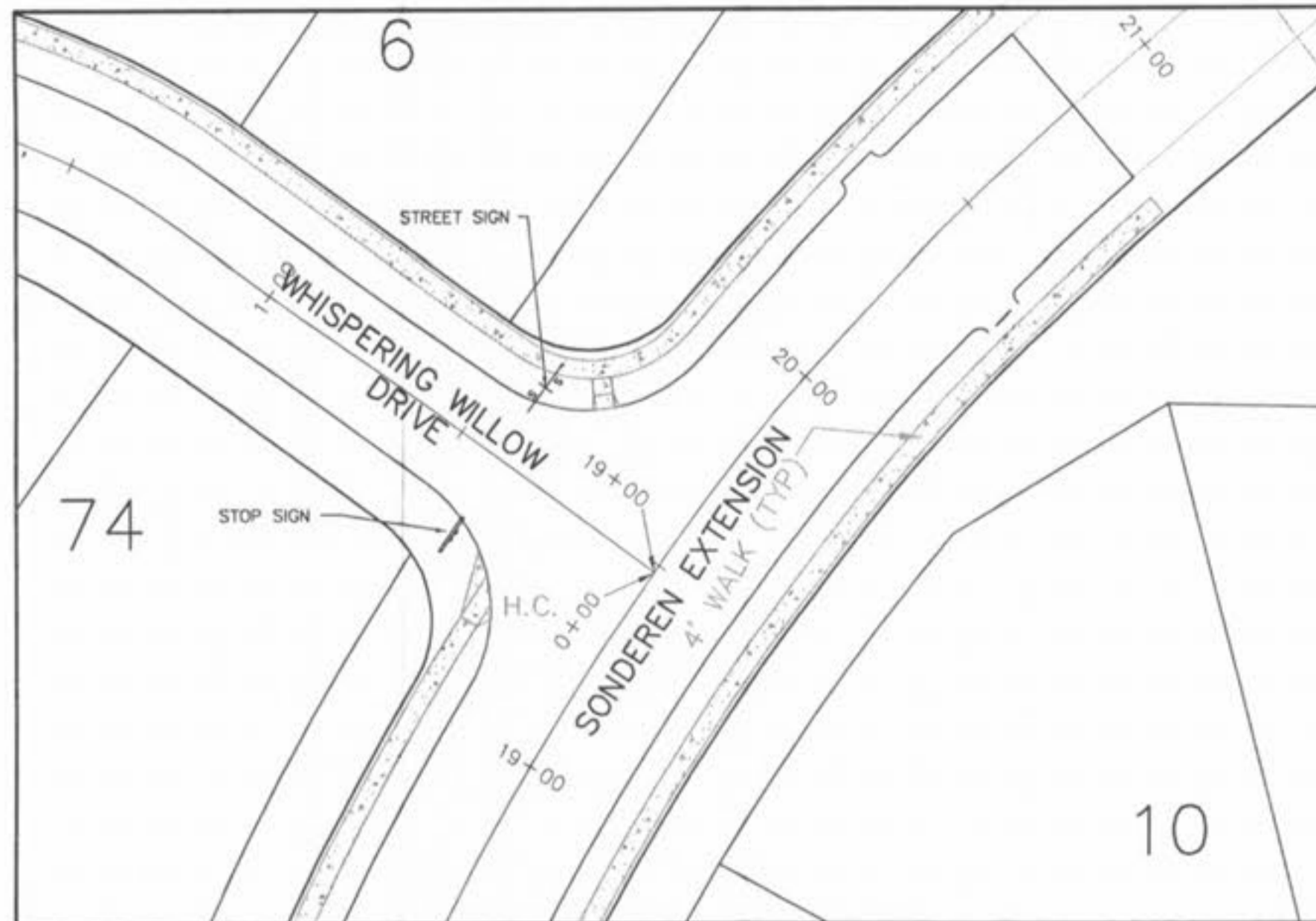
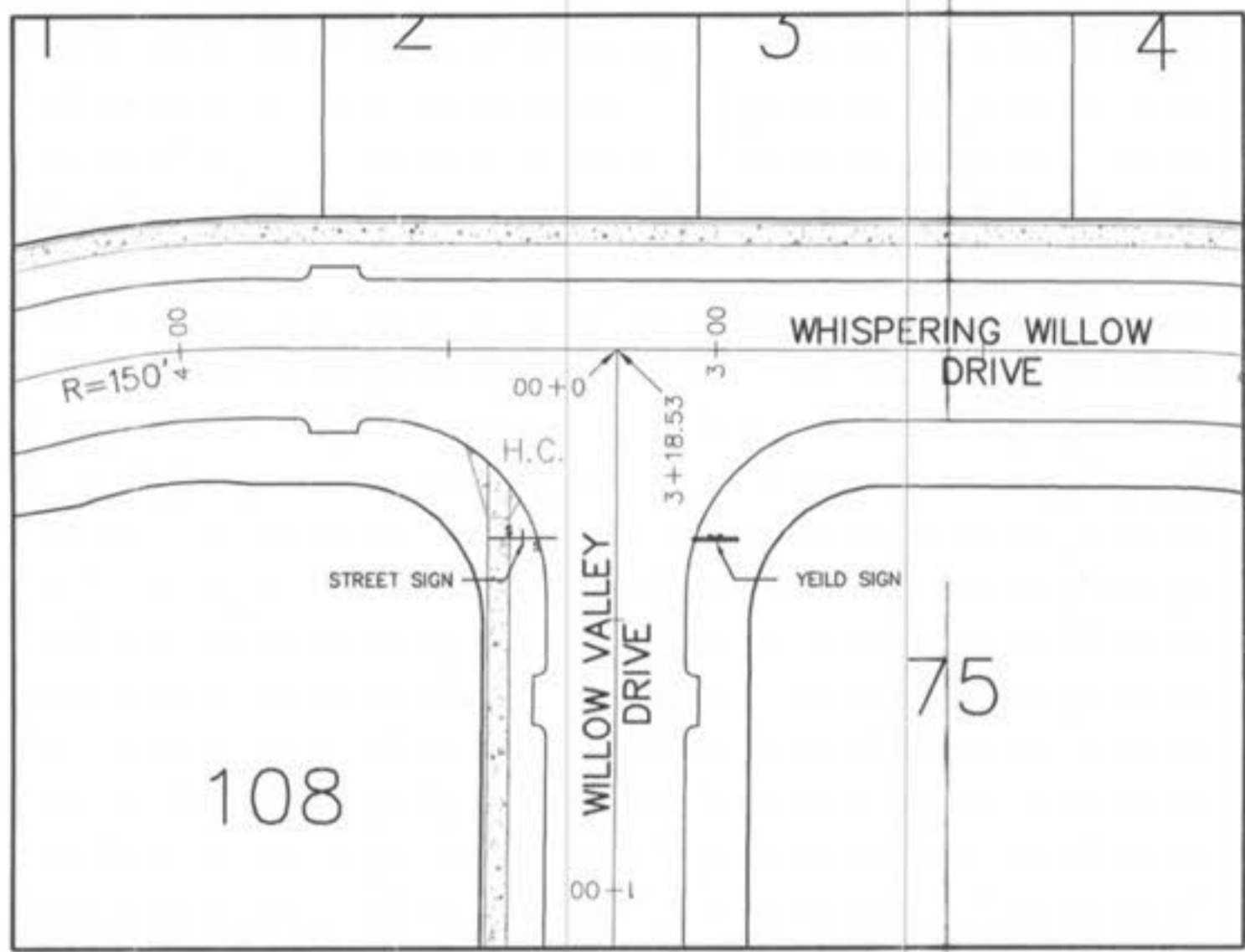
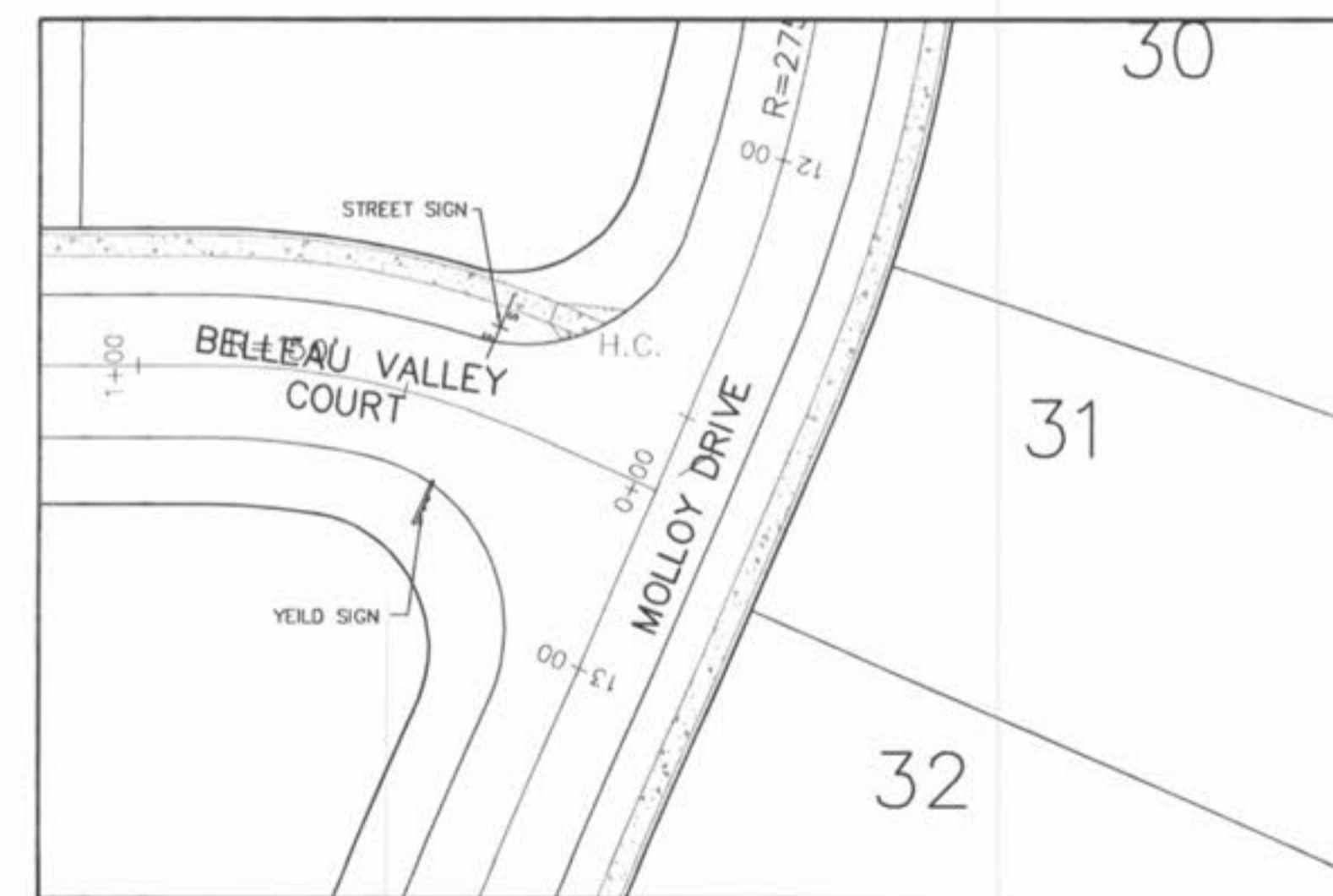
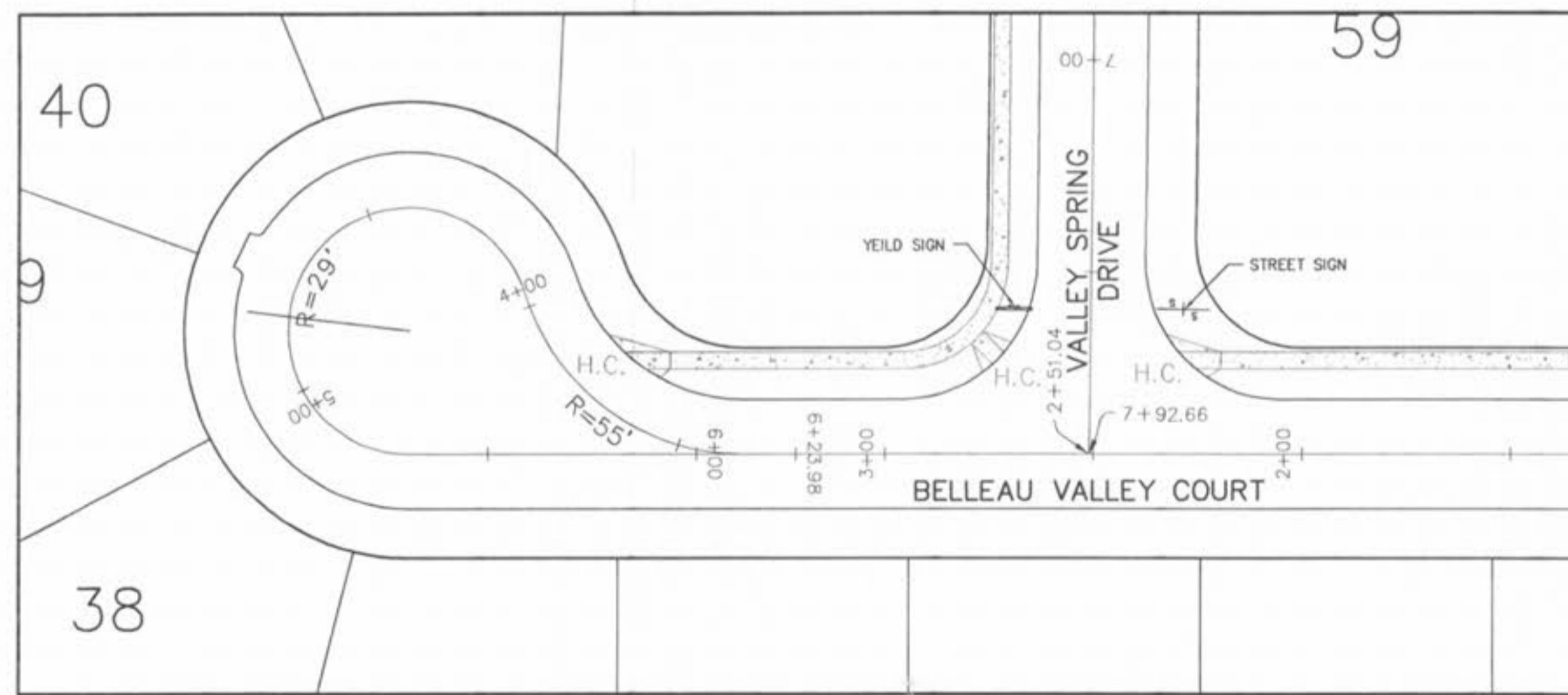
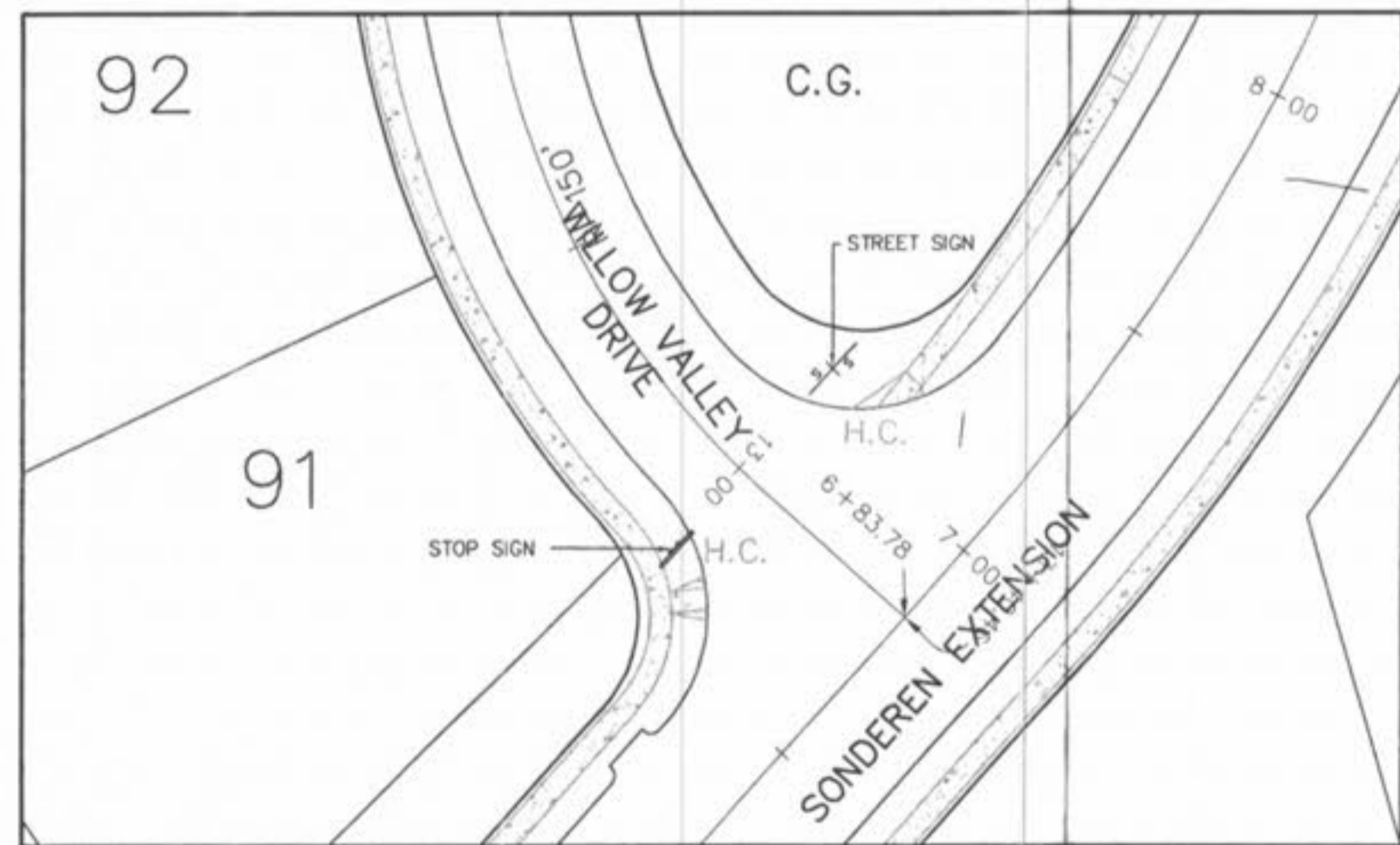
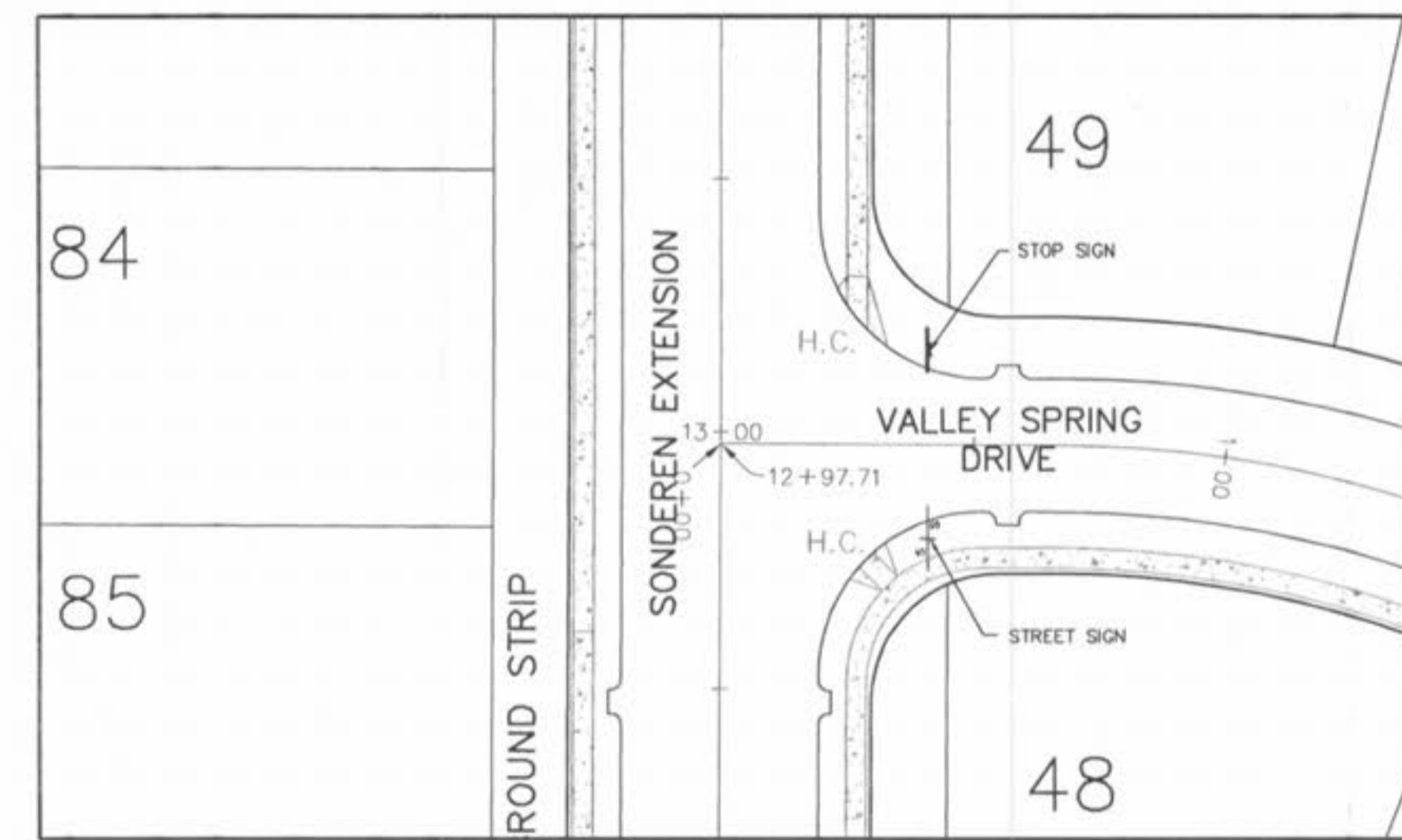


Drawing name: K:\D\0302021 LOEFFLER TRACT\Improvement\2021wcp.dwg Plotted on: Dec 12, 2003 - 2:02pm Plotted by: caschoefer



GENERAL NOTES:

1. ALL SIGN POSTS, BACKS AND BRACKET ARMS SHALL BE PAINTED BLACK USING "CARBOLINE RUSTBOUND PENETRATING SEALER SG" AND "CARBOLINE 133 HB" PAINT OR EQUIVALENT AS APPROVED BY THE CITY OF O'FALLON.
2. ALL SIGN LOCATIONS AND SIZES MUST BE APPROVED BY THE PLANNING DIVISION PRIOR TO INSTALLATION.
3. "R.O.W." DENOTES PROPOSED RIGHT-OF-WAY LINE.
4. STREET NAME SIGN PLATES SHALL BE 9 INCHES WIDE EXTRUDED ALUMINUM PANELS IN 30, 36, 42, 48, 52 AND 54 INCH LENGTHS PER DRAWING SHOWN ON THIS EXHIBIT.
5. SIGN LEGEND SHALL BE 6 INCH SERIES "C" REFLECTIVE WHITE LETTERING FOR STREET NAMES AND 4 INCH REFLECTIVE SERIES "B" LETTERS FOR THE SUFFIX ON GREEN REFLECTIVE BACKGROUND. ALL REFLECTIVE SHEETING SHALL BE TYPE II-ENCLOSED LENS AND MEET FEDERAL SPECIFICATION FP-79,1979 SECTION 6.33.06 SHEET REFLECTIVE MATERIALS.
6. SIGN POSTS SHALL BE HEAVY "U" CHANNEL PAINTED STEEL POSTS.
7. SIGNS ARE TO BE MOUNTED A MINIMUM OF 3.5 FEET FROM THE BACK OF CURB WITH A MINIMUM CLEARANCE FROM THE SIDEWALK OF 1.5 FEET.
8. SIGN POSTS SHALL BE MOUNTED 18-24 INCHES IN THE GROUND AND SET IN A CONCRETE BASE.
9. THE CONTRACTOR SHALL BE RESPONSIBLE FOR VERIFICATION OF UNDERGROUND UTILITIES AND STRUCTURES SHOWN OR NOT SHOWN PRIOR TO THE PLACEMENT OF SIGN POSTS.
10. ALL SIGNS TO BE INSTALLED PER M.U.T.C.D.



TRAFFIC CONTROLS

SCALE: 1"=30'

ISSUE REMARKS/DATE
1. 09/15/03 - Plotted

PREPARED FOR:

WHISPERING WOODS
5091 NEW BAUMGARTNER ROAD
ST. LOUIS, MISSOURI 63129
(314) 487-6717

12/17/2005
[Signature]

THE STERLING CO.
ENGINEERS & SURVEYORS
5065 NEW BAUMGARTNER ROAD
ST. LOUIS, MISSOURI 63129
(314) 487-6717
E-Mail: Sterling@sterling-eng.com

DRAWN: DESIGNED: CHECKED: *[Signature]*

PROJECT: **WHISPERING WOODS**
SHEET TITLE: **TRAFFIC CONTROL PLAN**

NO.	03	02	021
M.S.D.			SHEET
P#			TCP1
DIGITAL FILE LOCATION	K:\D\0302021 LOEFFLER TRACT\Improvement\2021wcp.dwg		
DATE	12/17/2005		
BY	[Signature]		
OF			