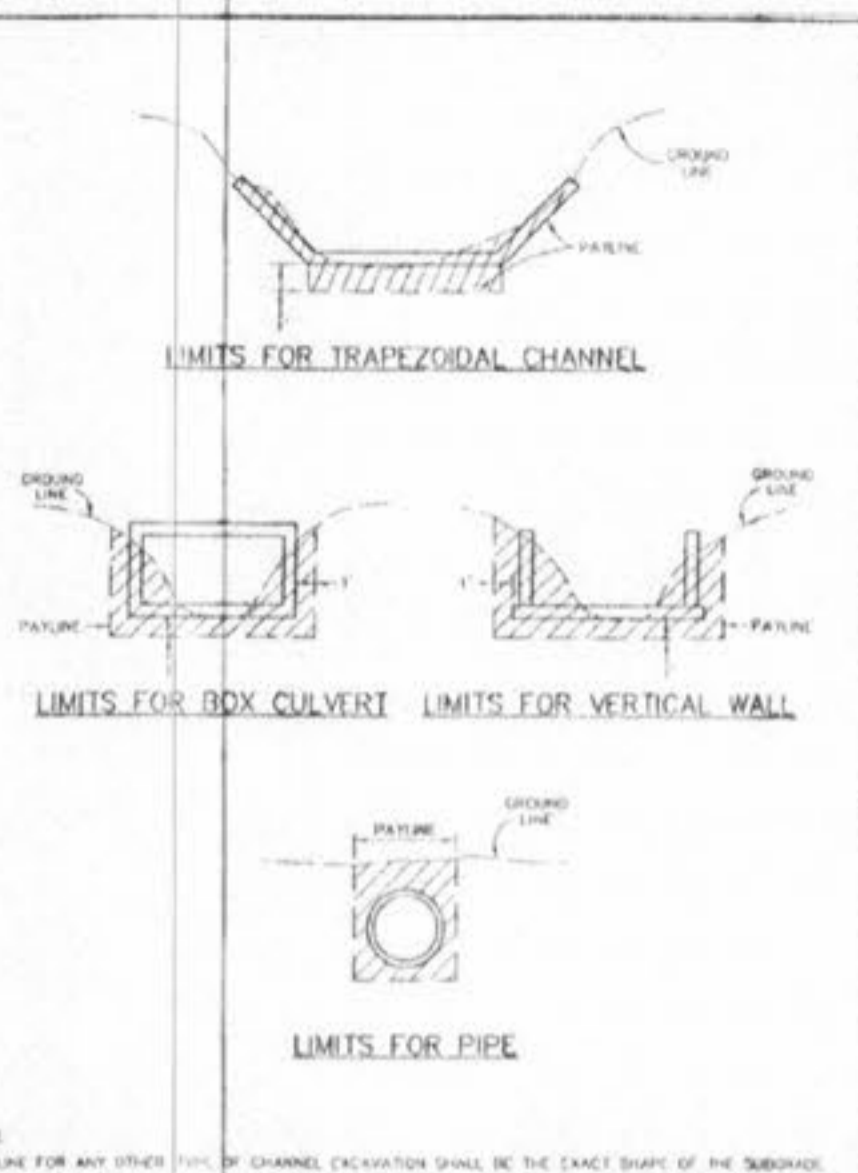
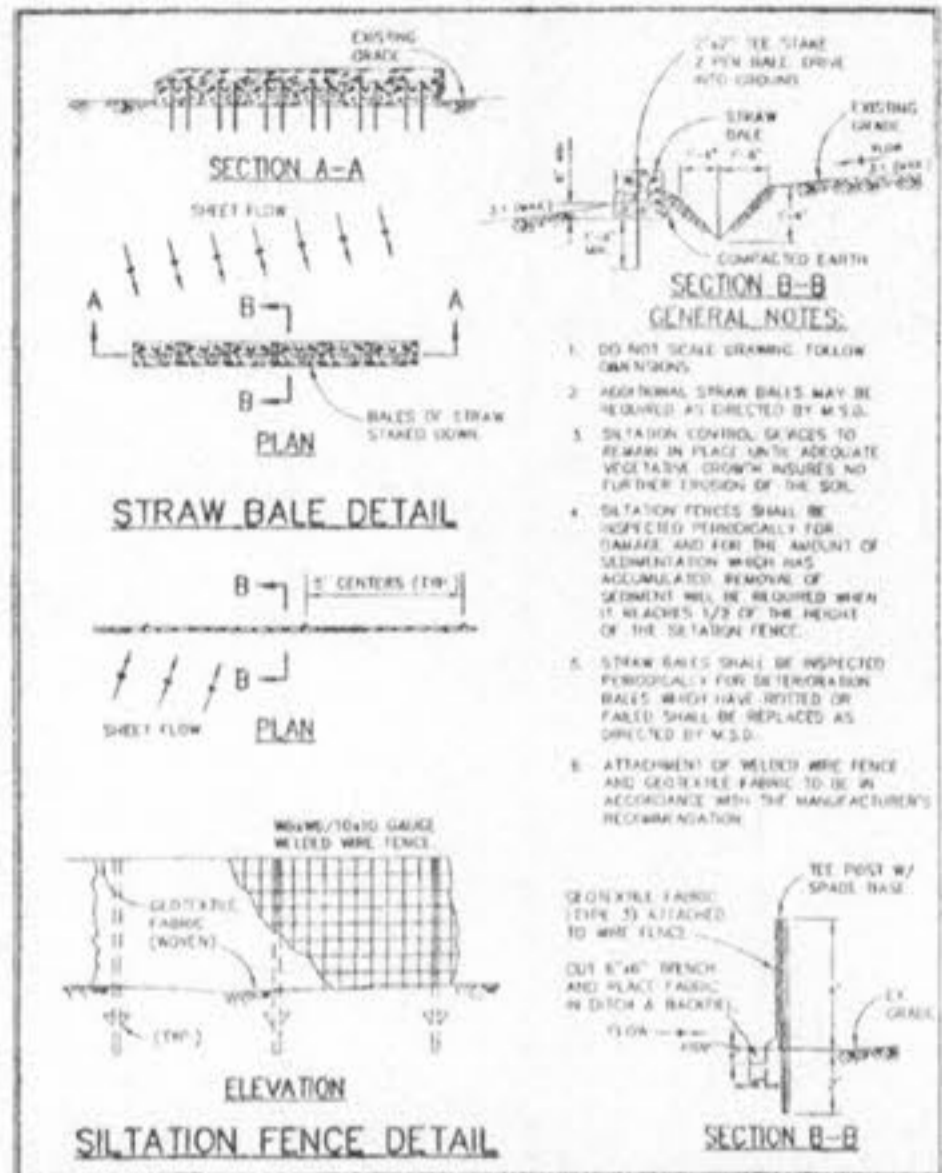


ROUND PIPE				HORIZONTAL ELLIPTICAL PIPE			
INSIDE DIAMETER OF PIPE (INCHES)	PAVING WIDTH OF TRENCH (FEET)	PAVING WIDTH OF TRENCH (INCHES)	PAVING WIDTH OF TRENCH (FEET)	INSIDE DIMENSIONS OF PIPE (INCHES)	PAVING WIDTH OF TRENCH (INCHES)	PAVING WIDTH OF TRENCH (FEET)	PAVING WIDTH OF TRENCH (INCHES)
4	30	2.50	3.00				
6	30	2.50	3.50				
8	30	2.50	4.00				
10	30	2.50	4.50				
12	30	2.50	5.00				
15	30	2.50	5.50				
18	30	2.50	6.00				
24	36	3.25	6.50				
30	42	3.75	7.00				
36	48	4.25	7.50				
42	54	4.75	8.00				
48	60	5.25	8.50				
54	66	5.75	9.00				
60	72	6.25	9.50				
66	78	6.75	10.00				
72	84	7.25	10.50				
78	90	7.75	11.00				
84	96	8.25	11.50				
90	102	8.75	12.00				
96	108	9.25	12.50				
102	114	9.75	13.00				
108	120	10.25	13.50				
114	126	10.75	14.00				
120	132	11.25	14.50				
126	138	11.75	15.00				
132	144	12.25	15.50				
138	150	12.75	16.00				
144	156	13.25	16.50				

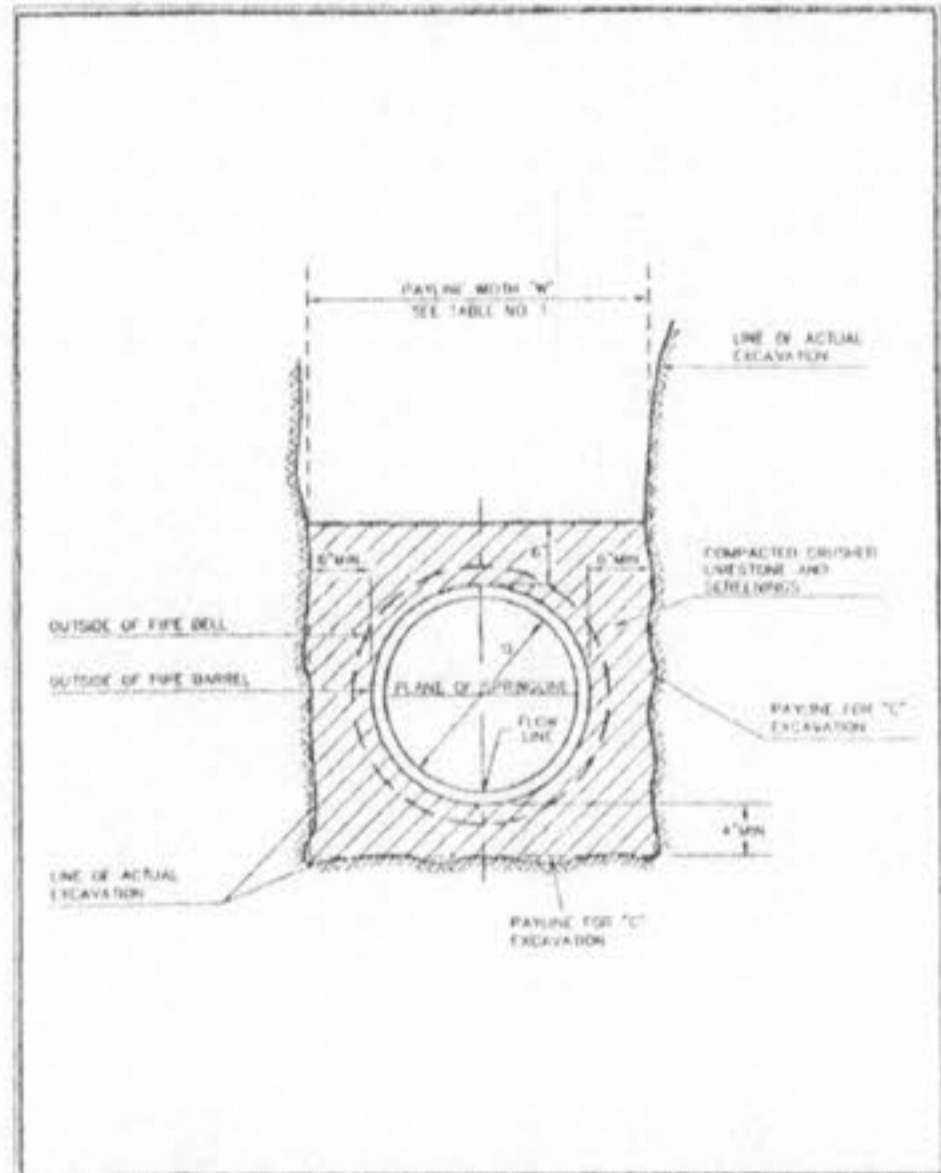
TABLE 1
PAYLINE WIDTHS OF TRENCH AND PAVEMENT QUANTITIES OF CONCRETE
METROPOLITAN ST. LOUIS SEWER DISTRICT
Standard Details of Sewer Construction
SHEET 1



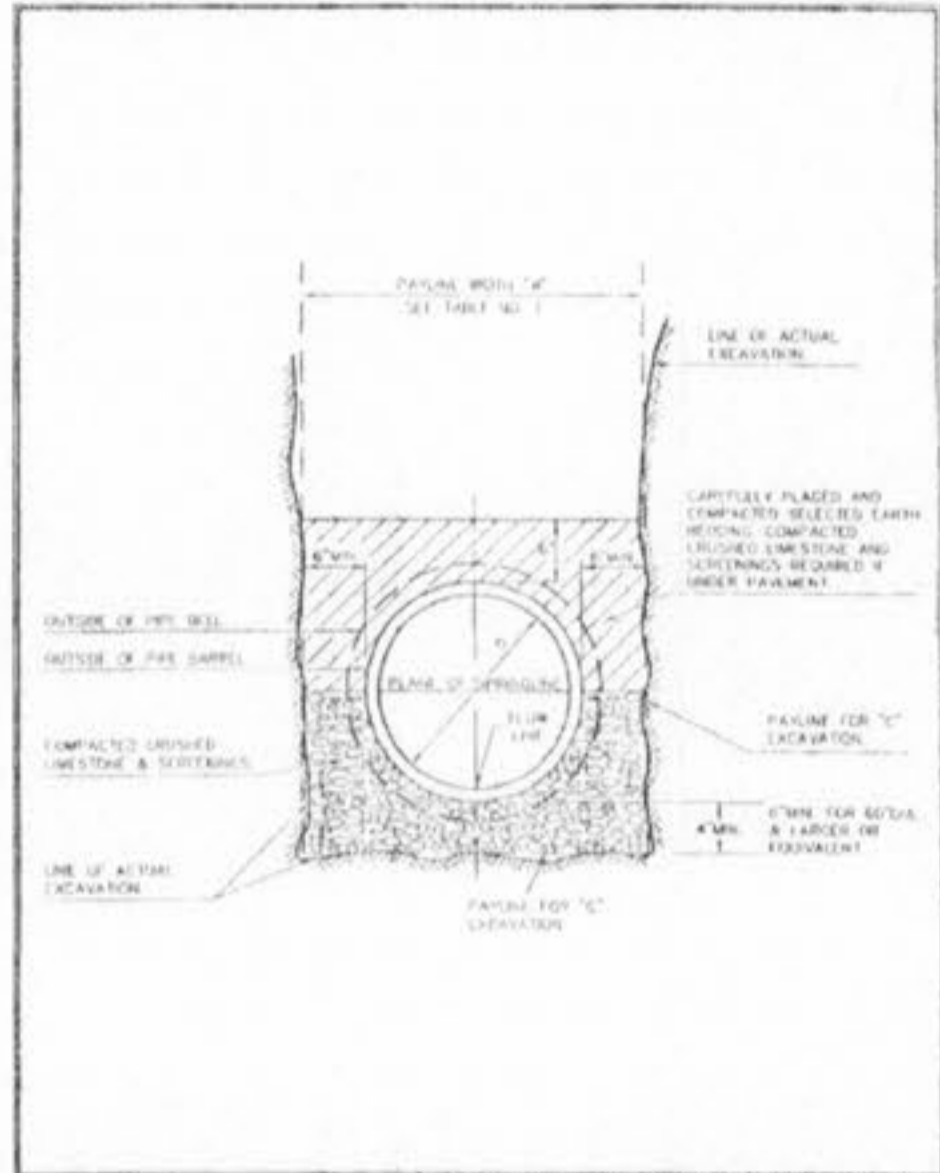
PAYLINE LIMITS FOR EXCAVATION
METROPOLITAN ST. LOUIS SEWER DISTRICT
Standard Details of Sewer Construction
SHEET 2



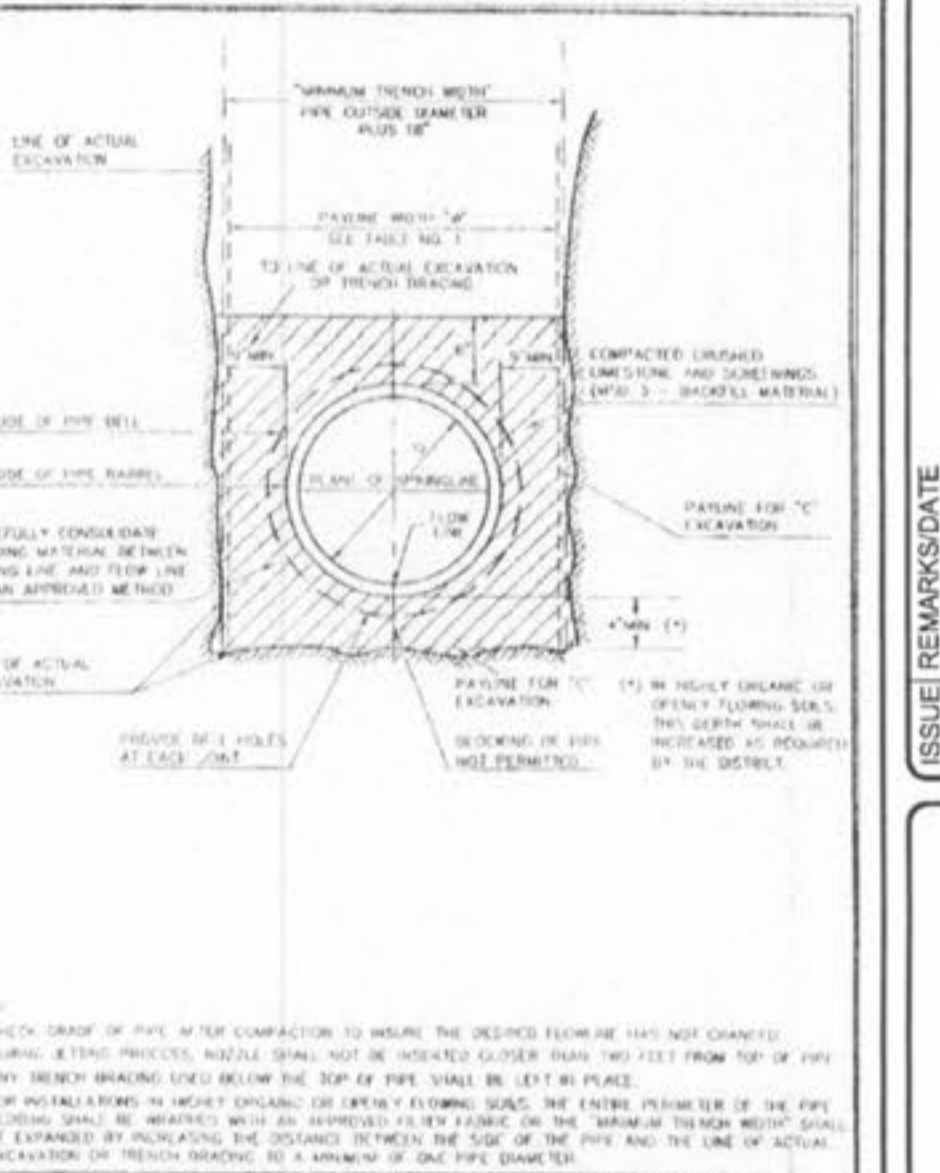
TYPICAL SILTATION CONTROL DEVICES
METROPOLITAN ST. LOUIS SEWER DISTRICT
Standard Details of Sewer Construction
SHEET 3



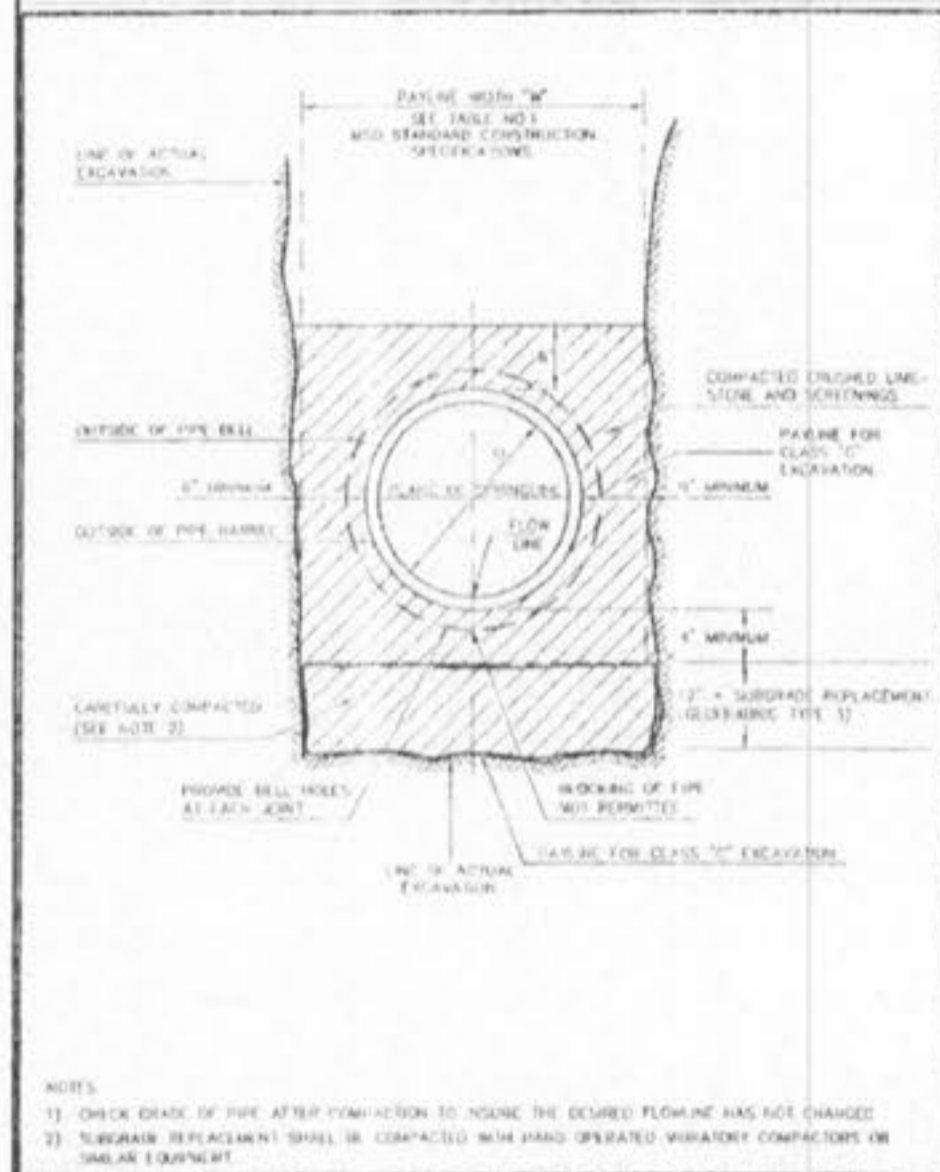
PIPE BEDDING CLASS "C" (FOR ALL PIPE EXCEPT REINFORCED CONCRETE PIPE)
METROPOLITAN ST. LOUIS SEWER DISTRICT
Standard Details of Sewer Construction
SHEET 4



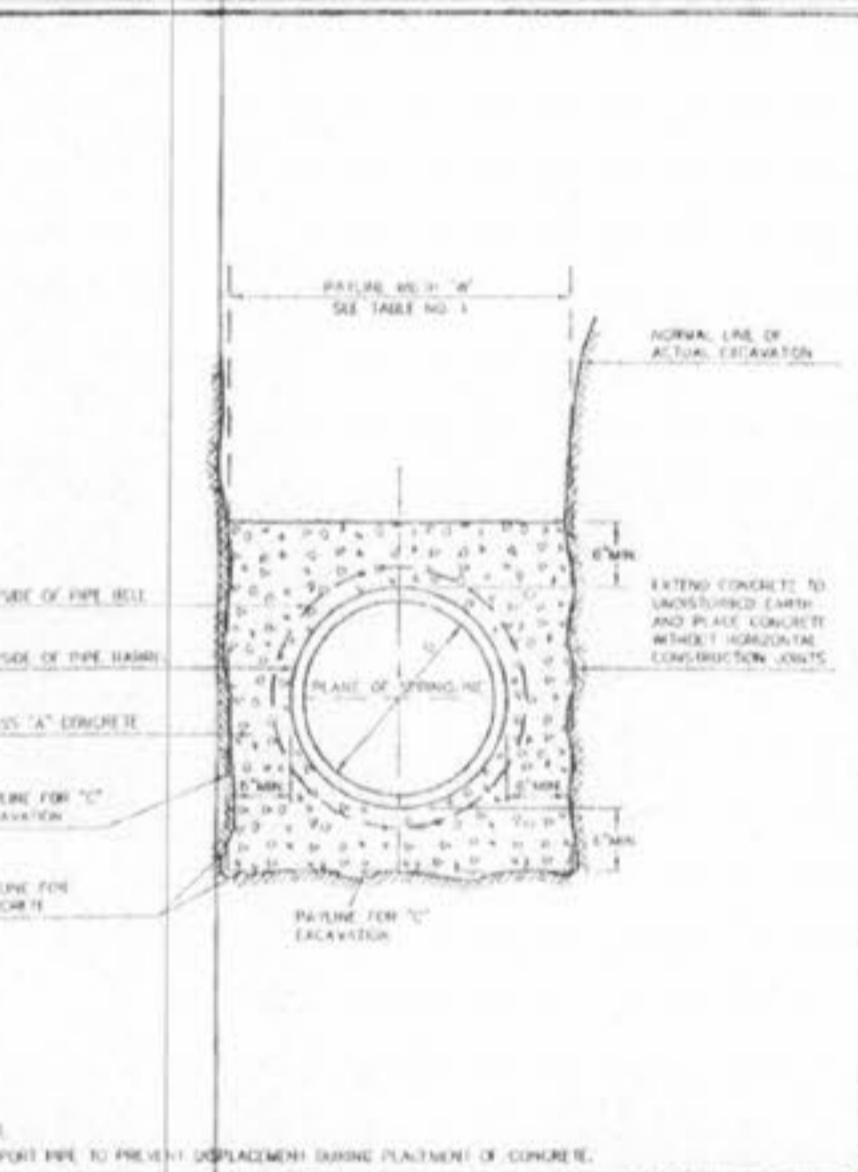
PIPE BEDDING CLASS "C" (MODIFIED FOR REINFORCED CONCRETE PIPE)
METROPOLITAN ST. LOUIS SEWER DISTRICT
Standard Details of Sewer Construction
SHEET 5



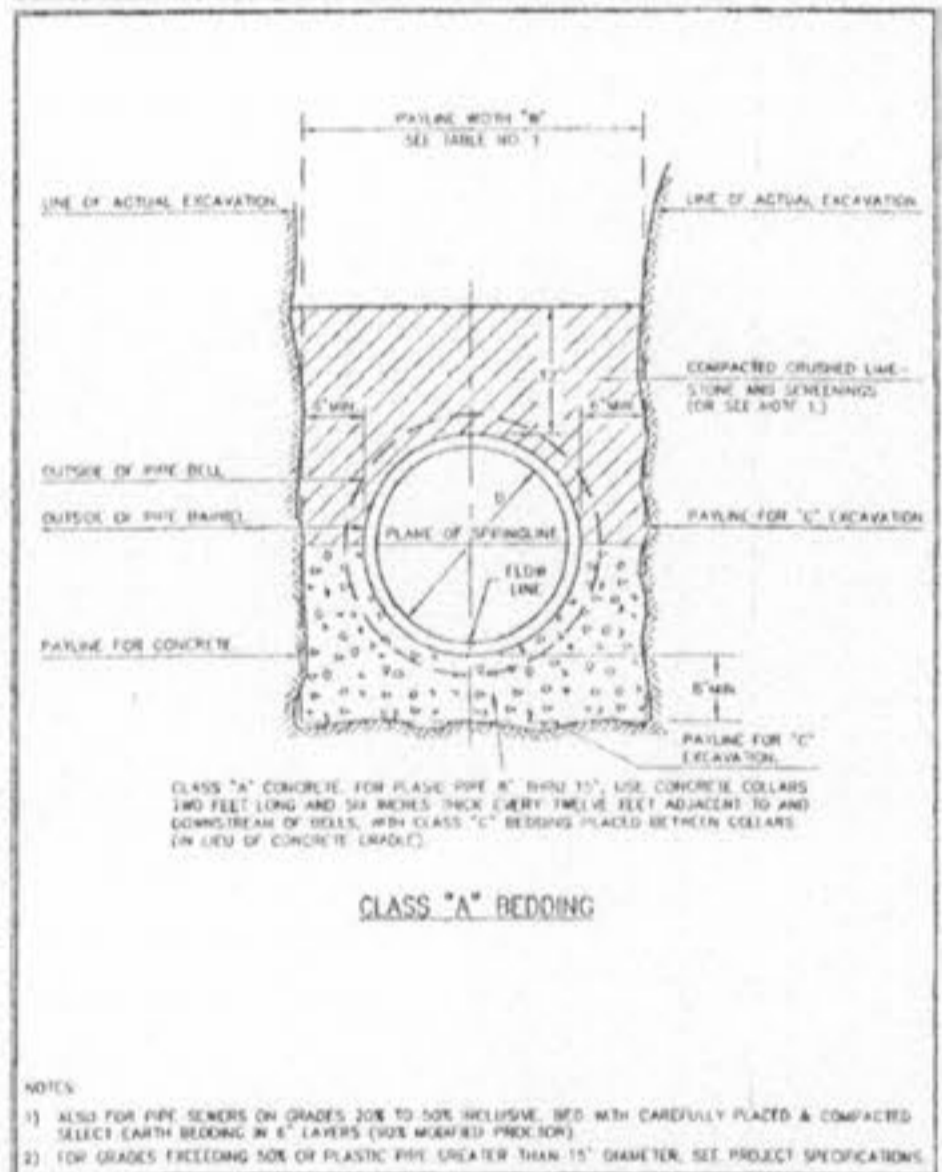
PIPE BEDDING FOR FLEXIBLE PIPE 18" - 48" DIAMETER
METROPOLITAN ST. LOUIS SEWER DISTRICT
Standard Details of Sewer Construction
SHEET 6



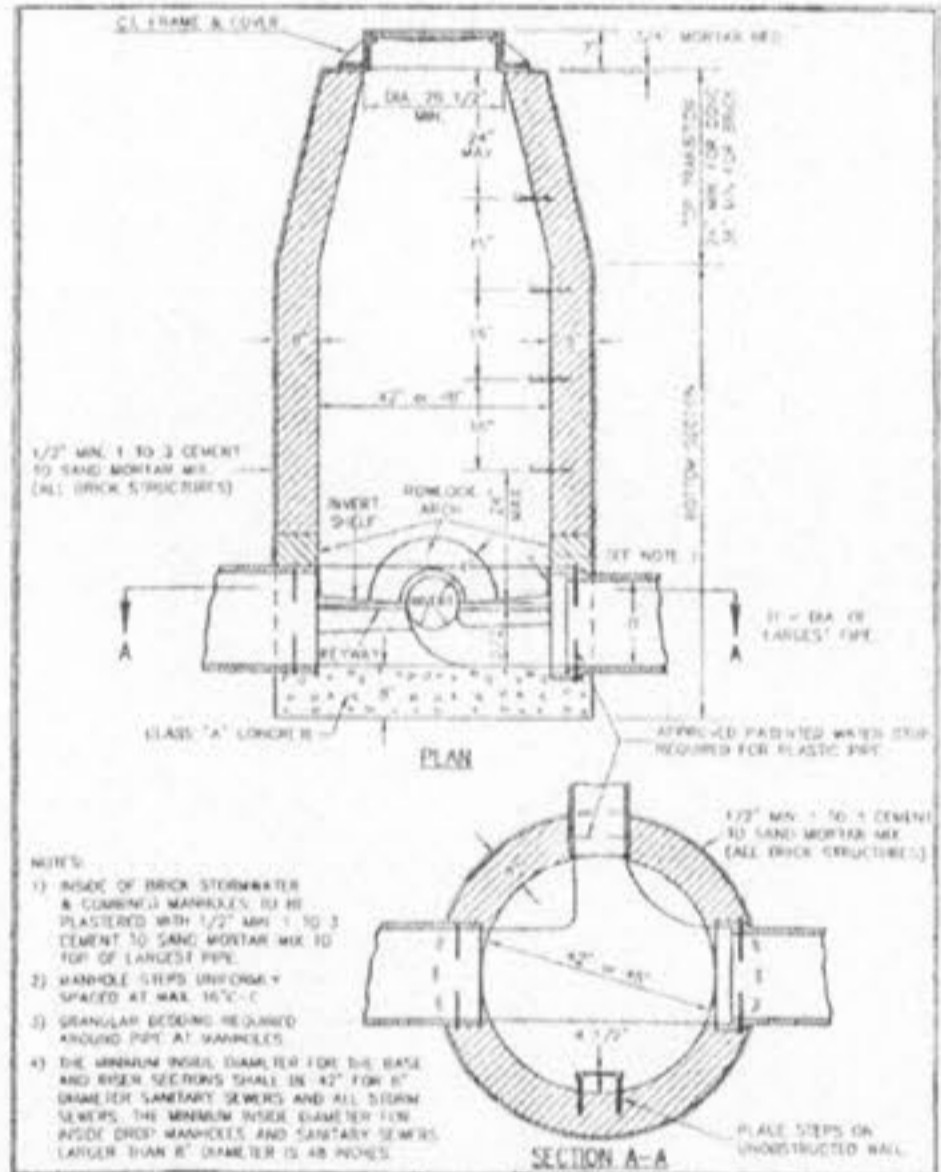
SPECIAL PIPE BEDDING DETAIL FOR SUBGRADE REPLACEMENT 12" DEPTH OR MORE
METROPOLITAN ST. LOUIS SEWER DISTRICT
Standard Details of Sewer Construction
SHEET 7



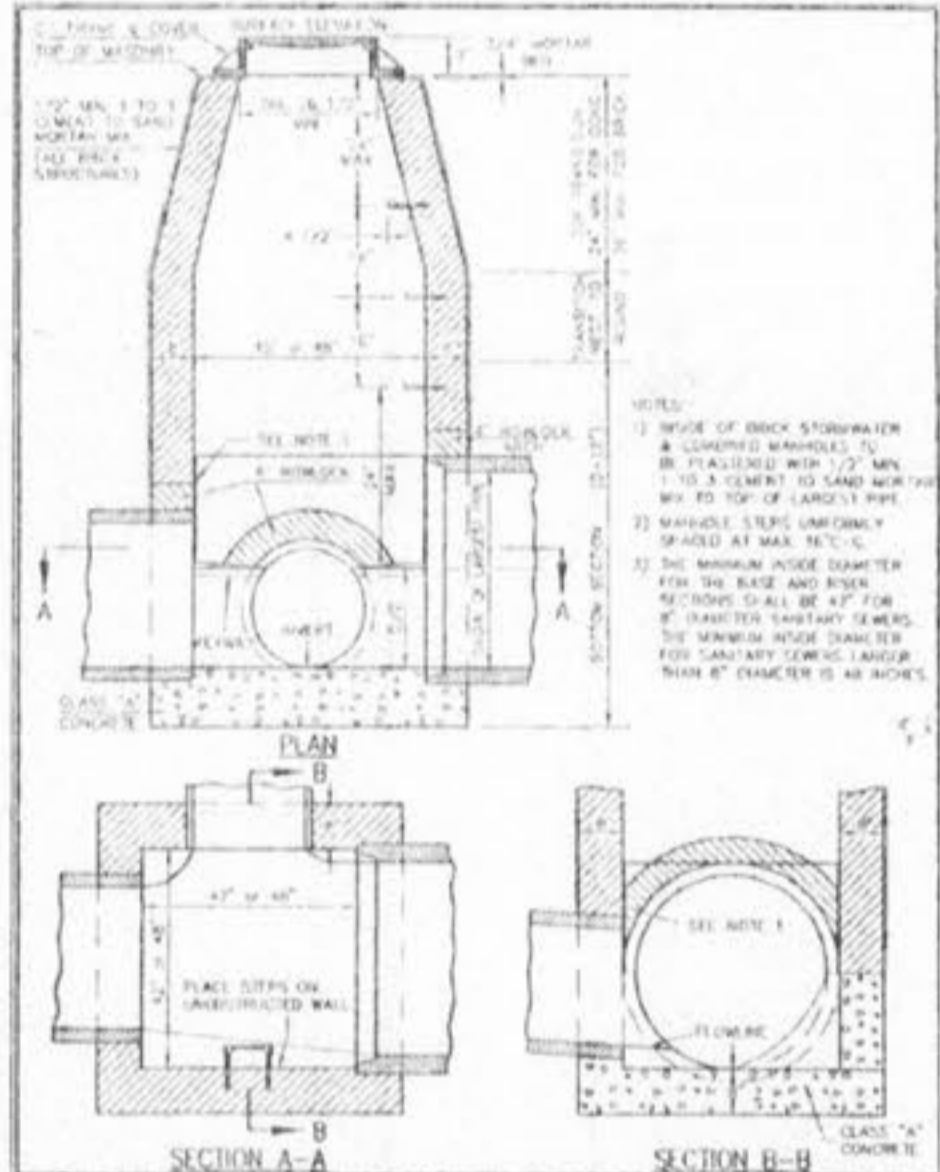
CONCRETE ENCASUREMENT
METROPOLITAN ST. LOUIS SEWER DISTRICT
Standard Details of Sewer Construction
SHEET 8



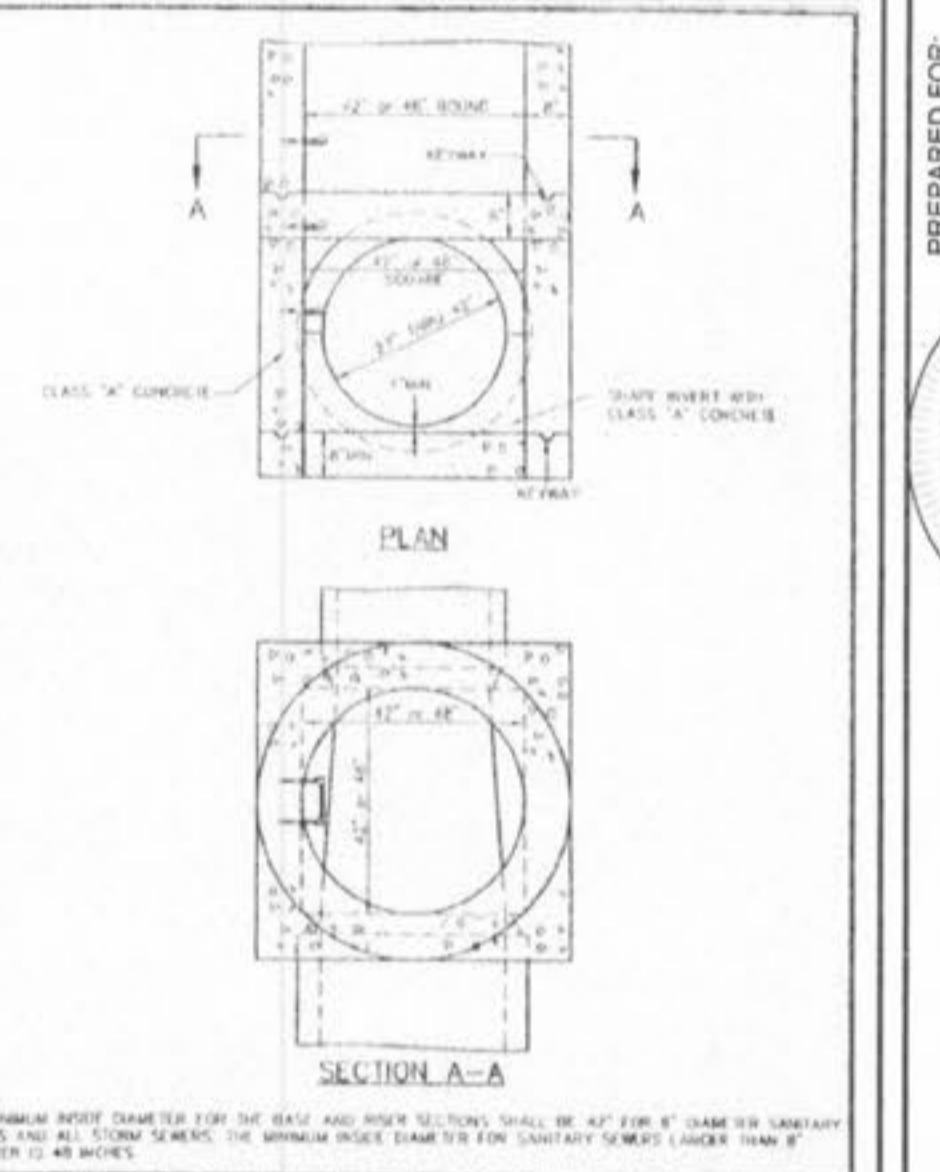
CLASS "A" BEDDING
METROPOLITAN ST. LOUIS SEWER DISTRICT
Standard Details of Sewer Construction
SHEET 9



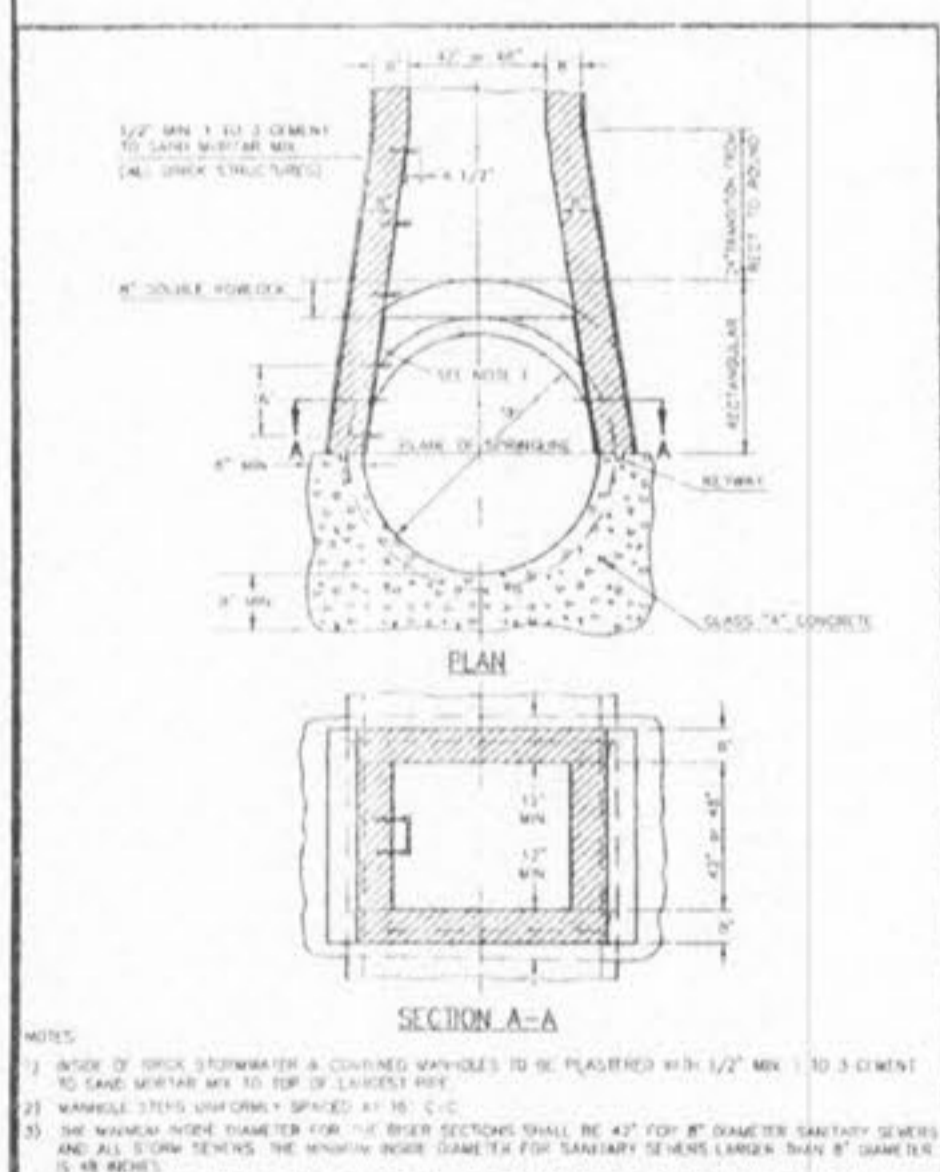
LINE MANHOLE ON PIPE SEWERS 8" - 24" DIA.
METROPOLITAN ST. LOUIS SEWER DISTRICT
Standard Details of Sewer Construction
SHEET 10



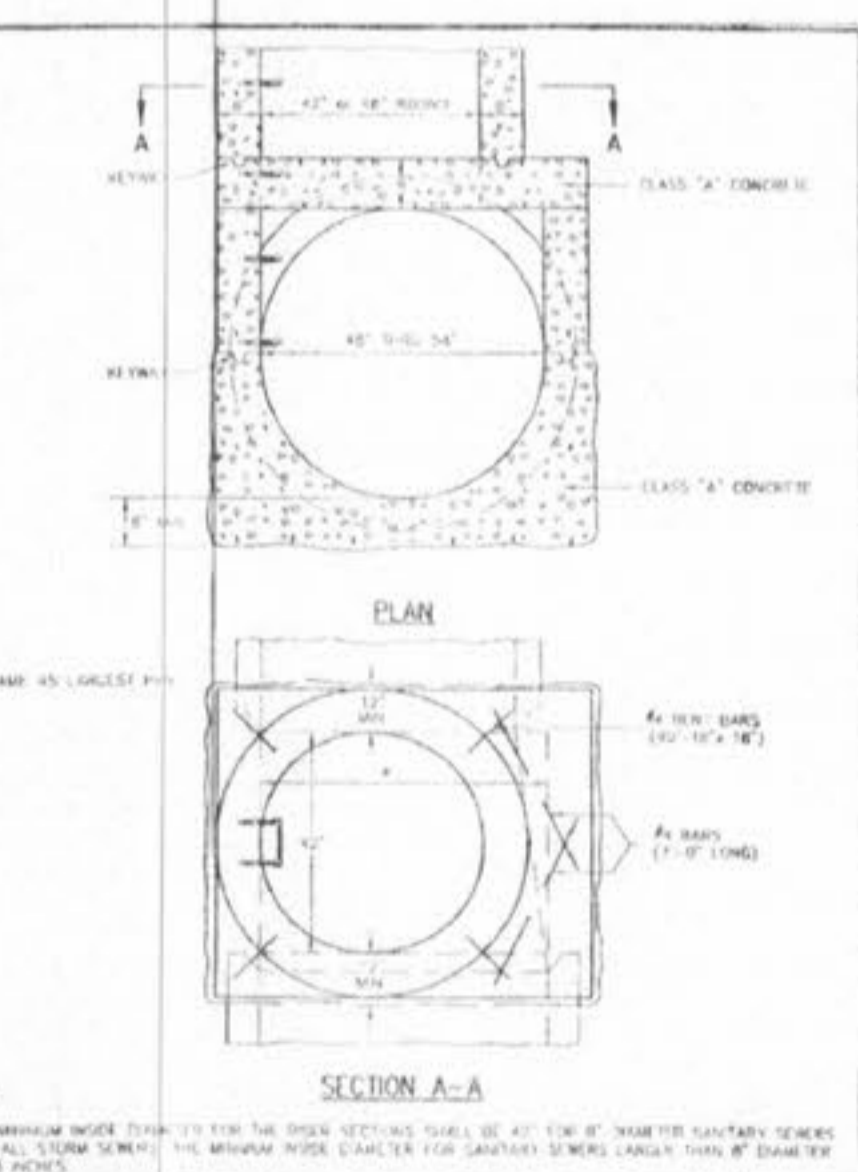
TYPICAL LINE MANHOLE ON PIPE SEWER 27" THRU 42" IN DIAMETER
METROPOLITAN ST. LOUIS SEWER DISTRICT
Standard Details of Sewer Construction
SHEET 11



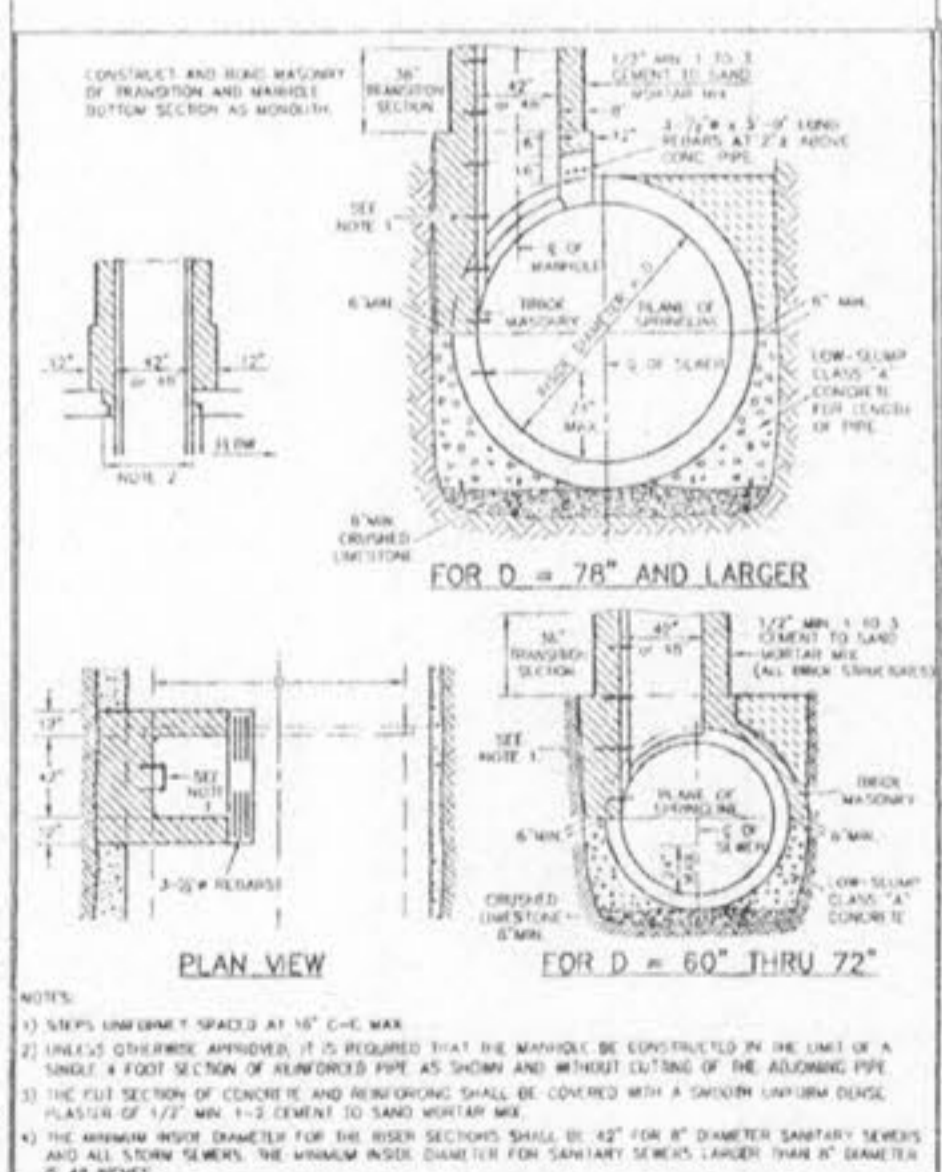
MANHOLE ON PIPE SEWER 27" THRU 42" (ALTERNATE)
METROPOLITAN ST. LOUIS SEWER DISTRICT
Standard Details of Sewer Construction
SHEET 12



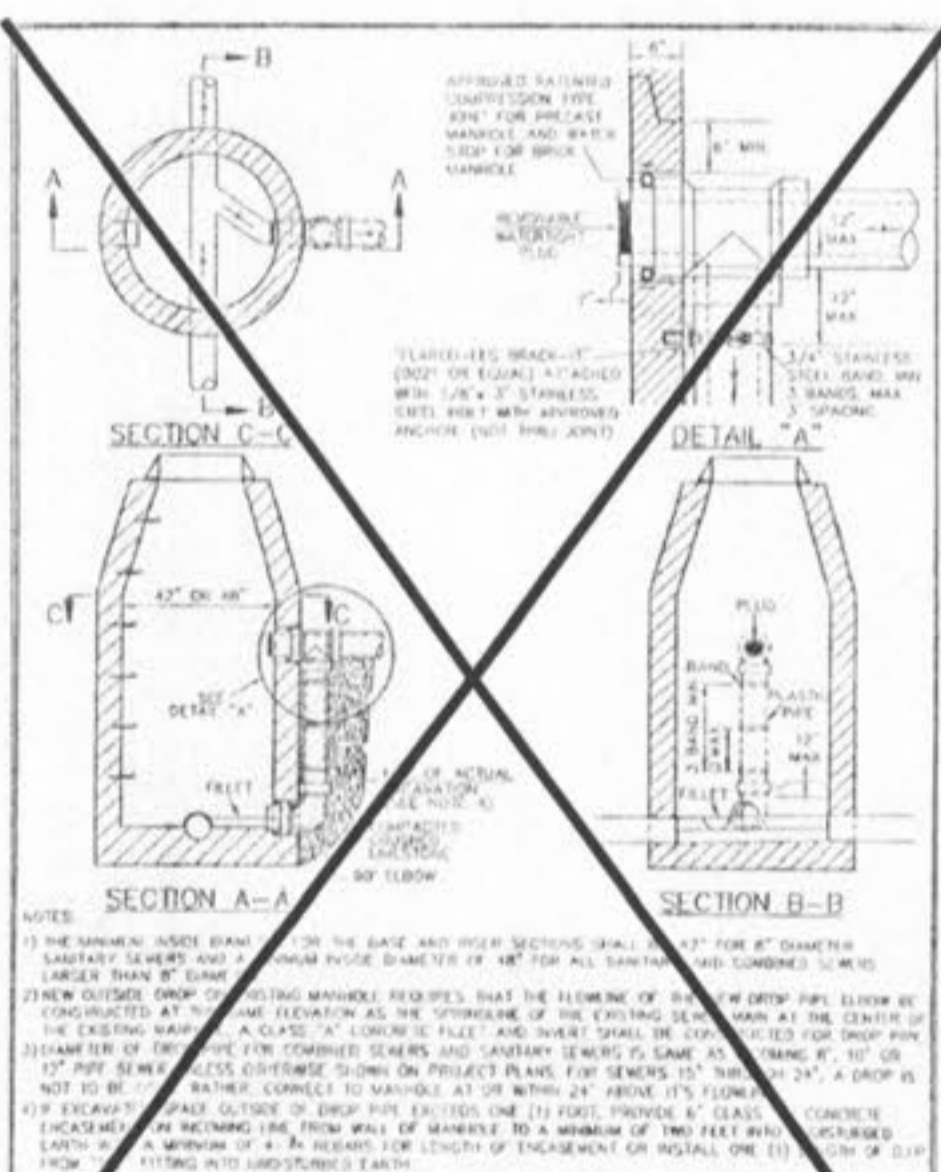
MANHOLE ON CONCRETE PIPE SEWERS 48" THRU 54" DIAMETER
METROPOLITAN ST. LOUIS SEWER DISTRICT
Standard Details of Sewer Construction
SHEET 13



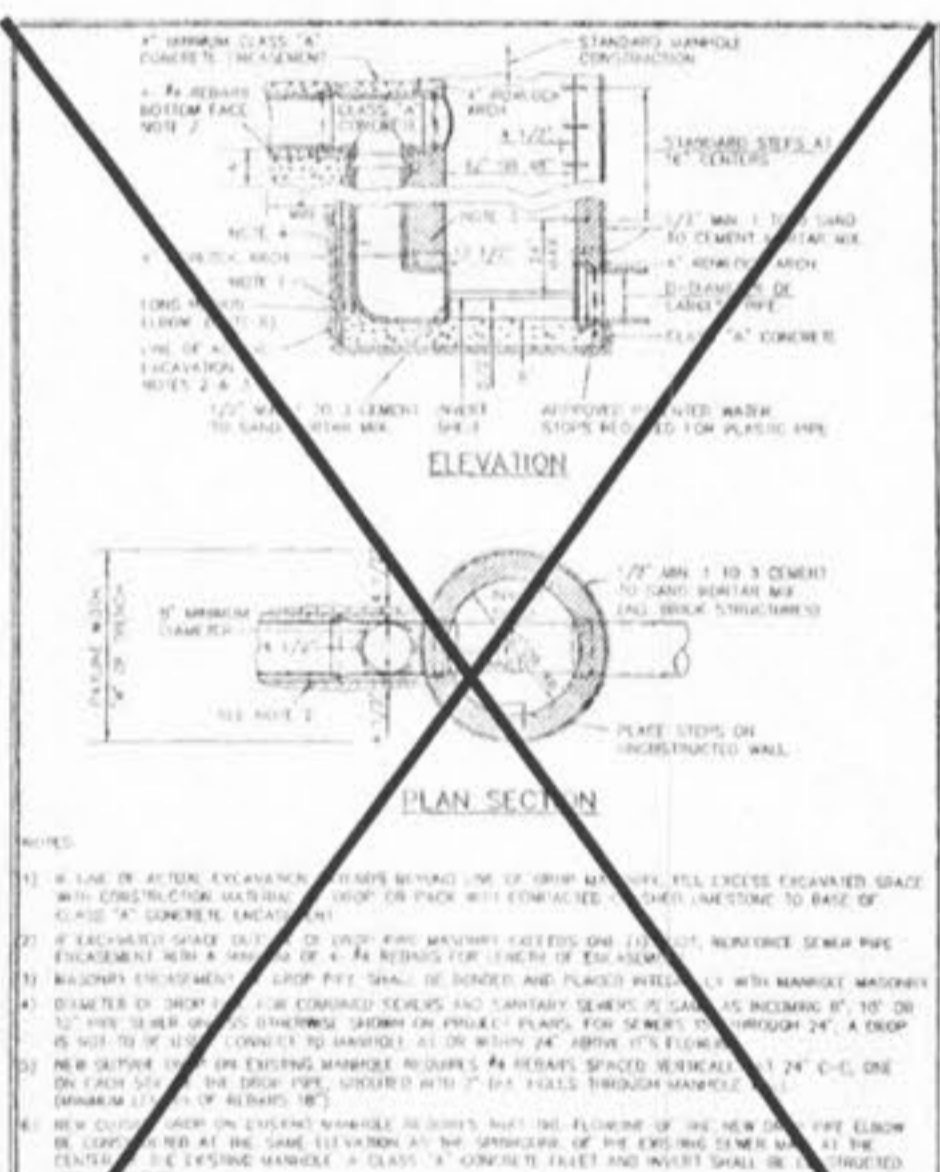
MANHOLE ON 48" THRU 54" CONCRETE PIPE (ALTERNATE)
METROPOLITAN ST. LOUIS SEWER DISTRICT
Standard Details of Sewer Construction
SHEET 14



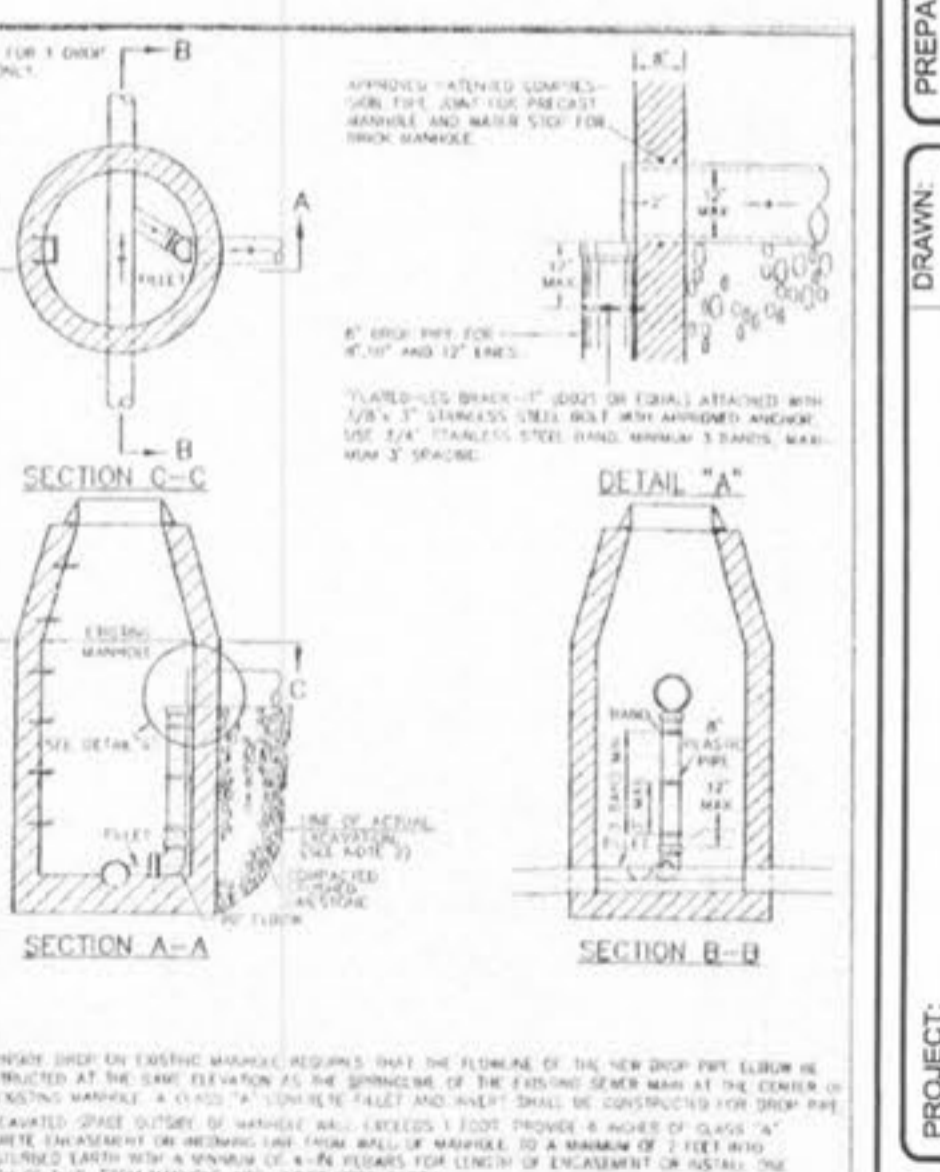
TYPICAL MANHOLE BASE REINFORCED CONCRETE PIPE SEWERS 60" AND LARGER IN DIAMETER
METROPOLITAN ST. LOUIS SEWER DISTRICT
Standard Details of Sewer Construction
SHEET 15



OUTSIDE FOULWATER DROP MANHOLE
METROPOLITAN ST. LOUIS SEWER DISTRICT
Standard Details of Sewer Construction
SHEET 16



OUTSIDE FOULWATER DROP MANHOLE (ALTERNATE)
METROPOLITAN ST. LOUIS SEWER DISTRICT
Standard Details of Sewer Construction
SHEET 17



NEW INSIDE DROP ON EXISTING MANHOLE FOR SEWERS 8" INCH TO 12" INCH
METROPOLITAN ST. LOUIS SEWER DISTRICT
Standard Details of Sewer Construction
SHEET 18

ISSUE REMARKS/DATE
09/15/03 - P/roed

PREPARED FOR:
WHISPERING L.L.C.
5091 NEW BAUMGARTNER ROAD
ST. LOUIS, MISSOURI
(314) 487-6717

12/17/2003
Whispering Woods

THE **STERLING** CO
ENGINEERS & SURVEYORS
5595 NEW BAUMGARTNER ROAD
ST. LOUIS, MISSOURI 63129
(314) 487-0440 FAX 487-8944
E-Mail: Sterling@con-stl.net

PREPARED BY:
DRAWN:
DESIGNED:
CHECKED:
WHISPERING WOODS
CONSTRUCTION DETAILS

NO. 03 02 021
M.S.D. SHEET
PH CD3
DIGITAL FILE LOCATION: SEWER-STERLING-2
DATE: 09/15/03