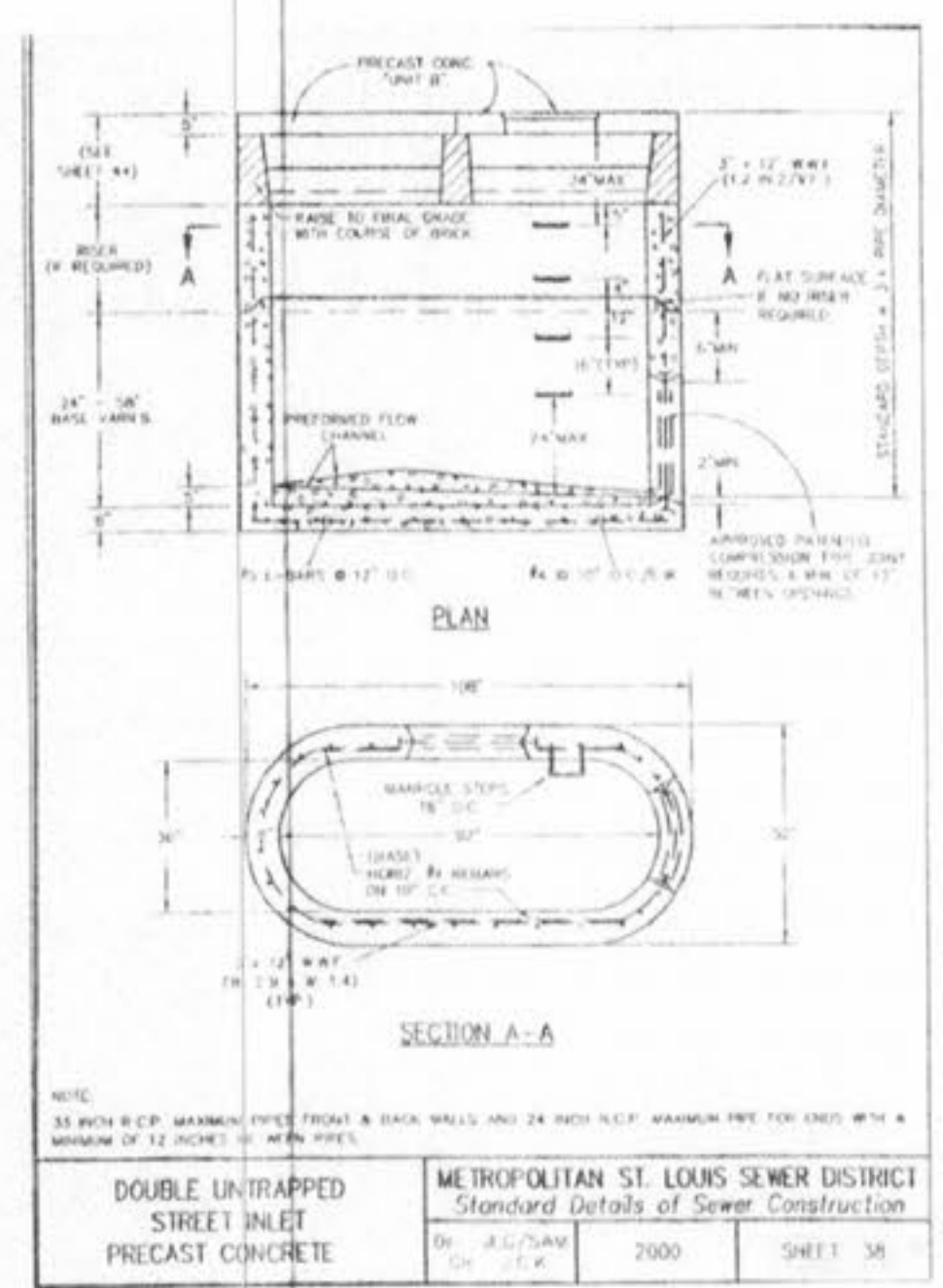
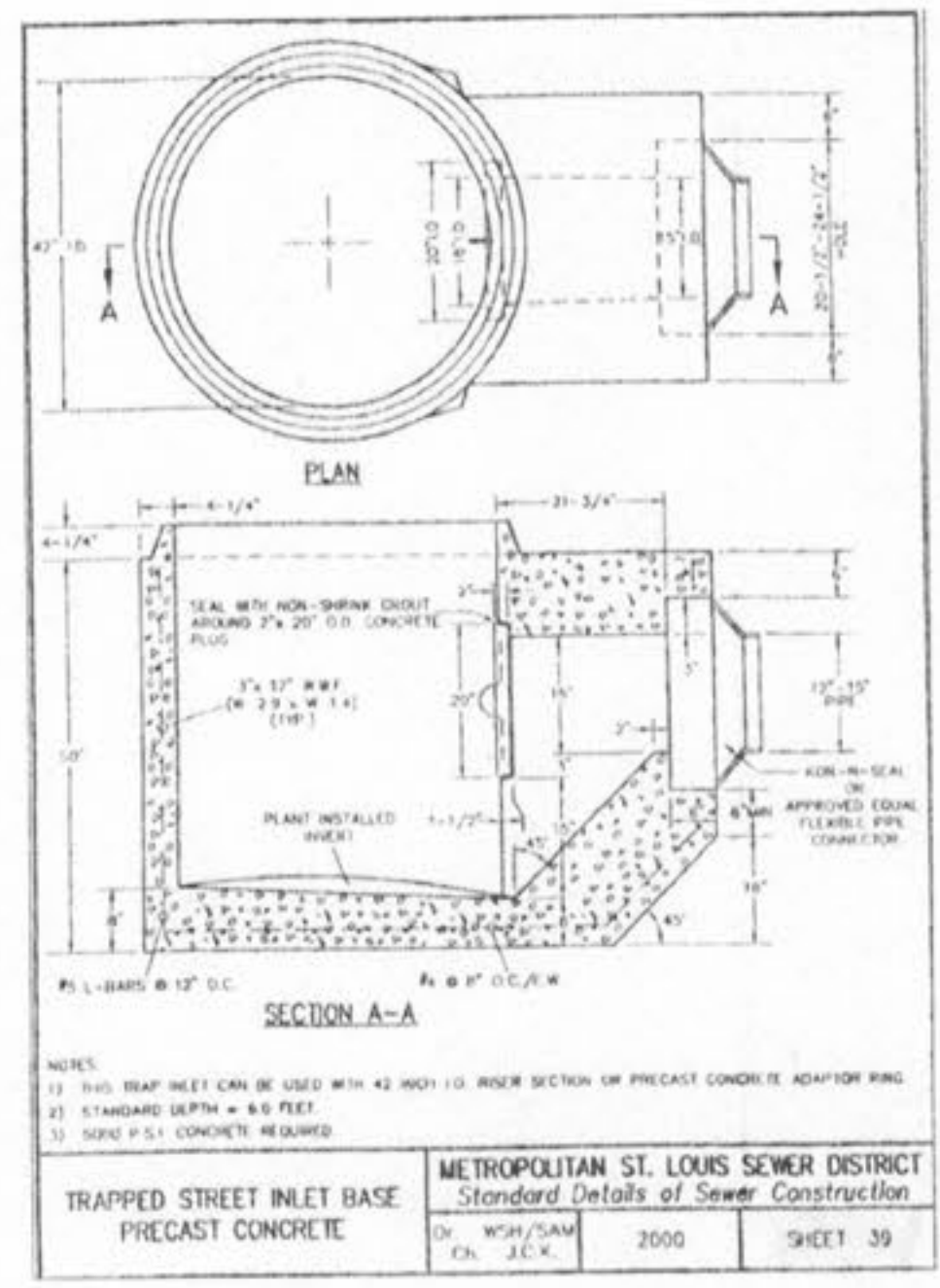


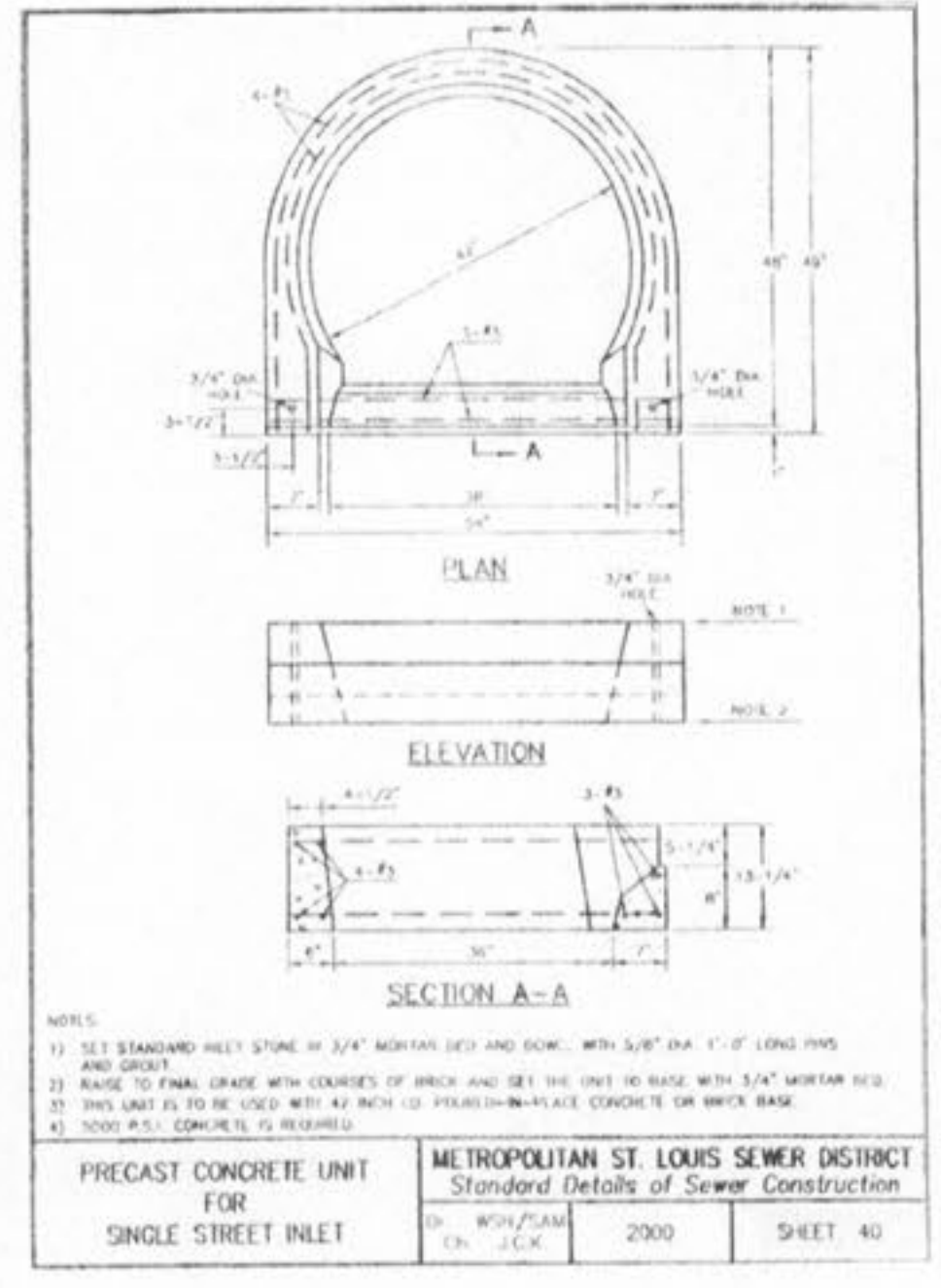
PRECAST CONCRETE	METROPOLITAN ST. LOUIS SEWER DISTRICT Standard Details of Sewer Construction	2000	SHEET 37
------------------	---	------	----------



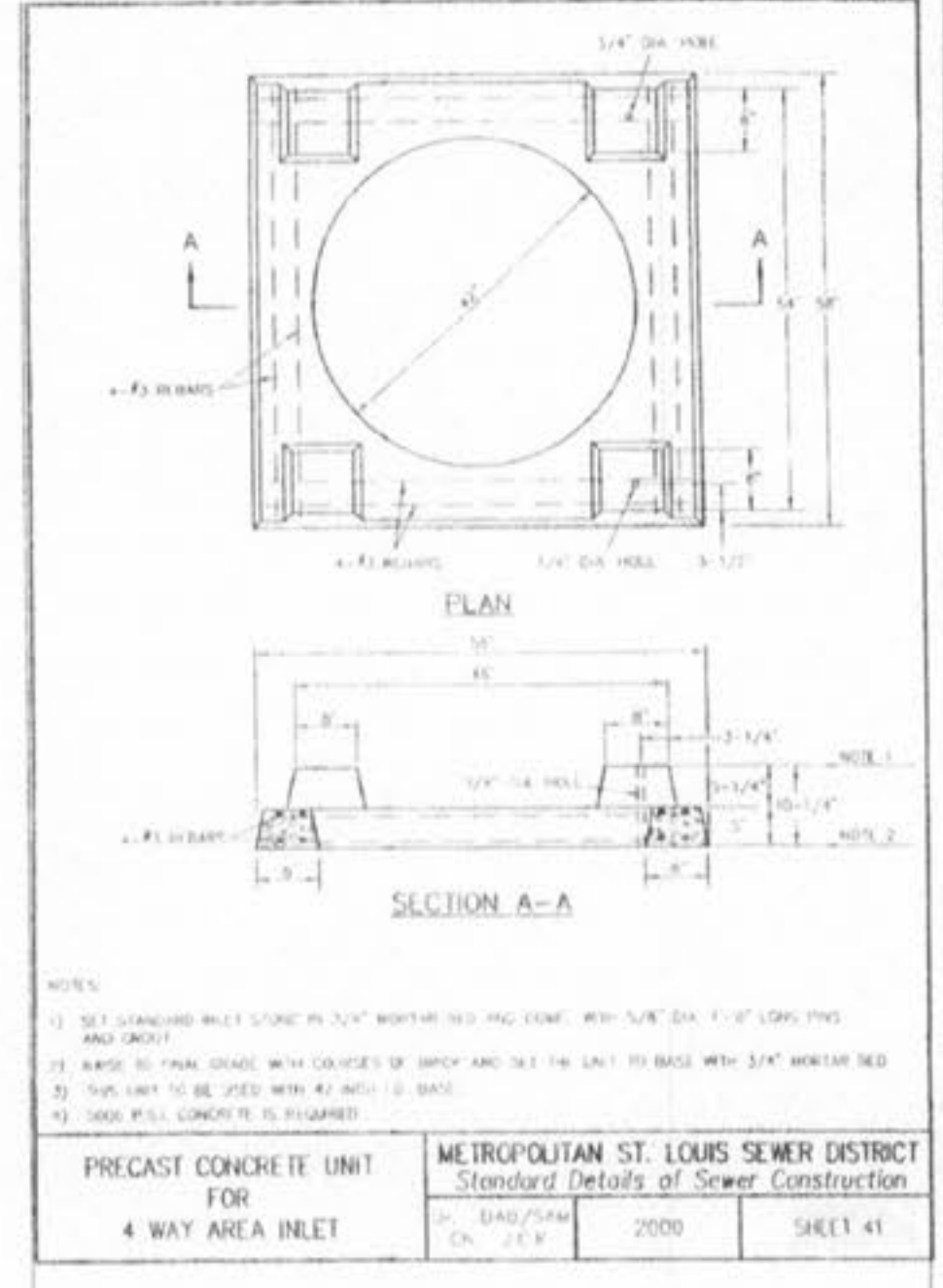
PRECAST CONCRETE	METROPOLITAN ST. LOUIS SEWER DISTRICT Standard Details of Sewer Construction	2000	SHEET 38
------------------	---	------	----------



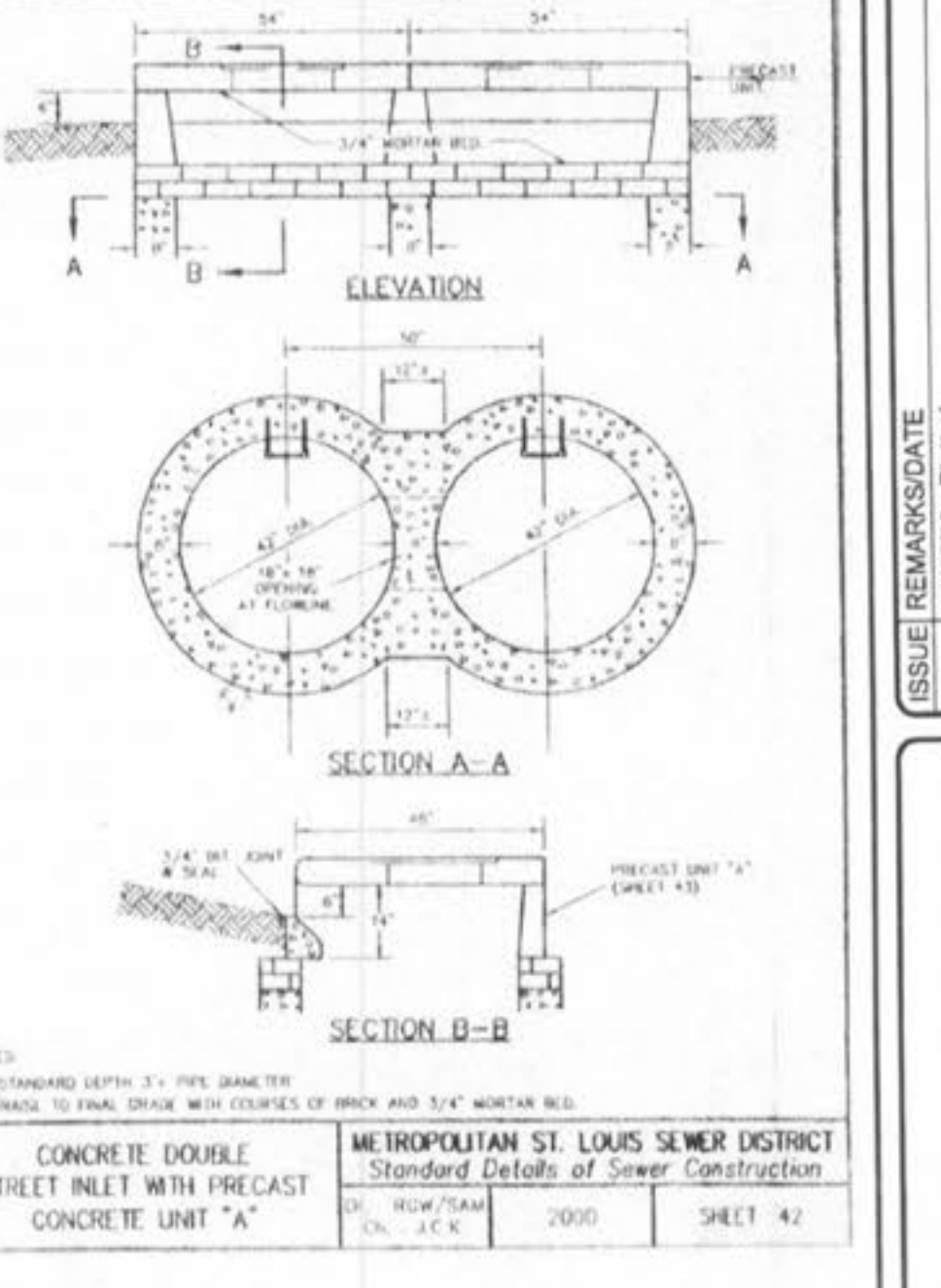
PRECAST CONCRETE	METROPOLITAN ST. LOUIS SEWER DISTRICT Standard Details of Sewer Construction	2000	SHEET 39
------------------	---	------	----------



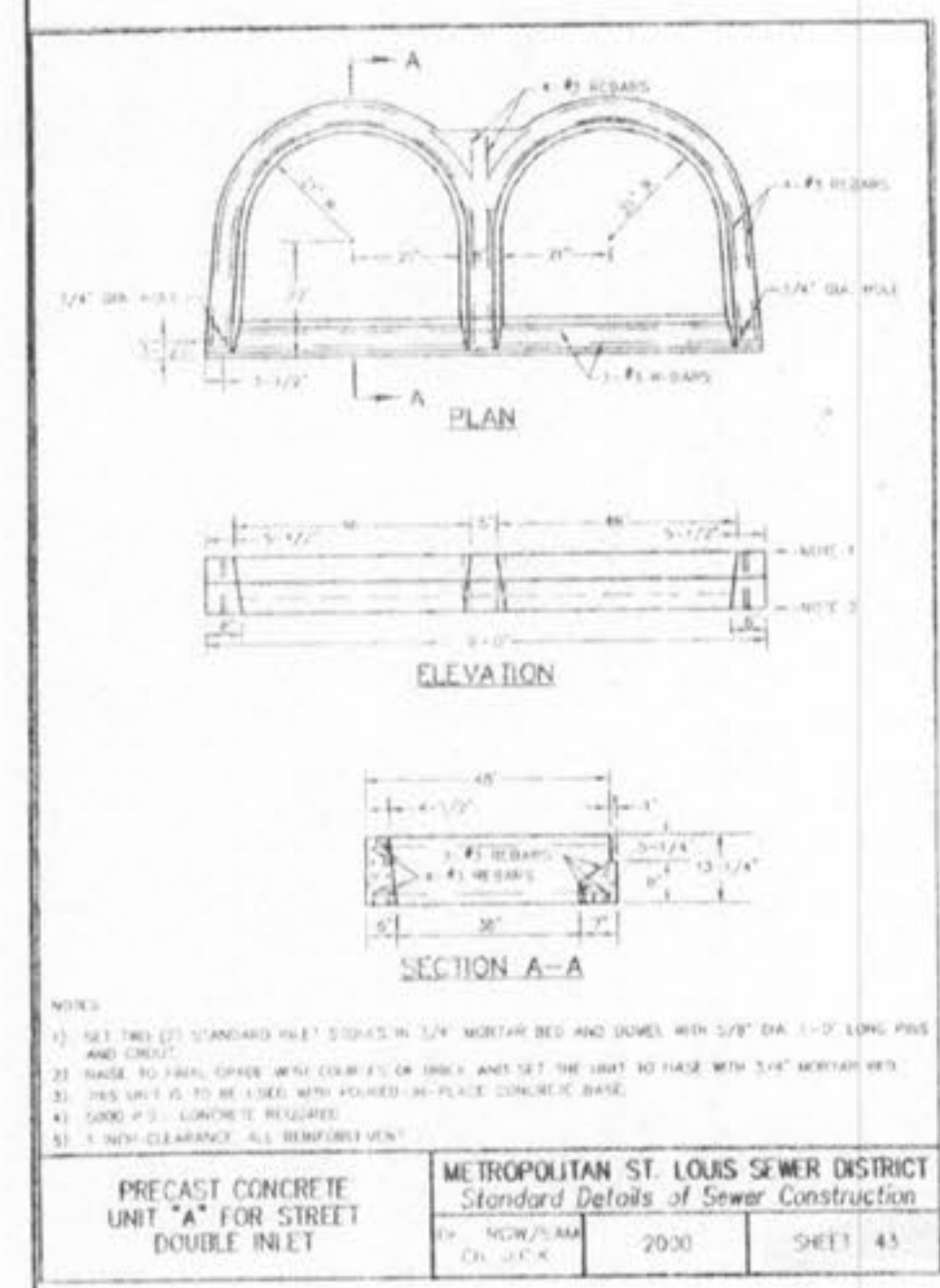
PRECAST CONCRETE UNIT FOR SINGLE STREET INLET	METROPOLITAN ST. LOUIS SEWER DISTRICT Standard Details of Sewer Construction	2000	SHEET 40
---	---	------	----------



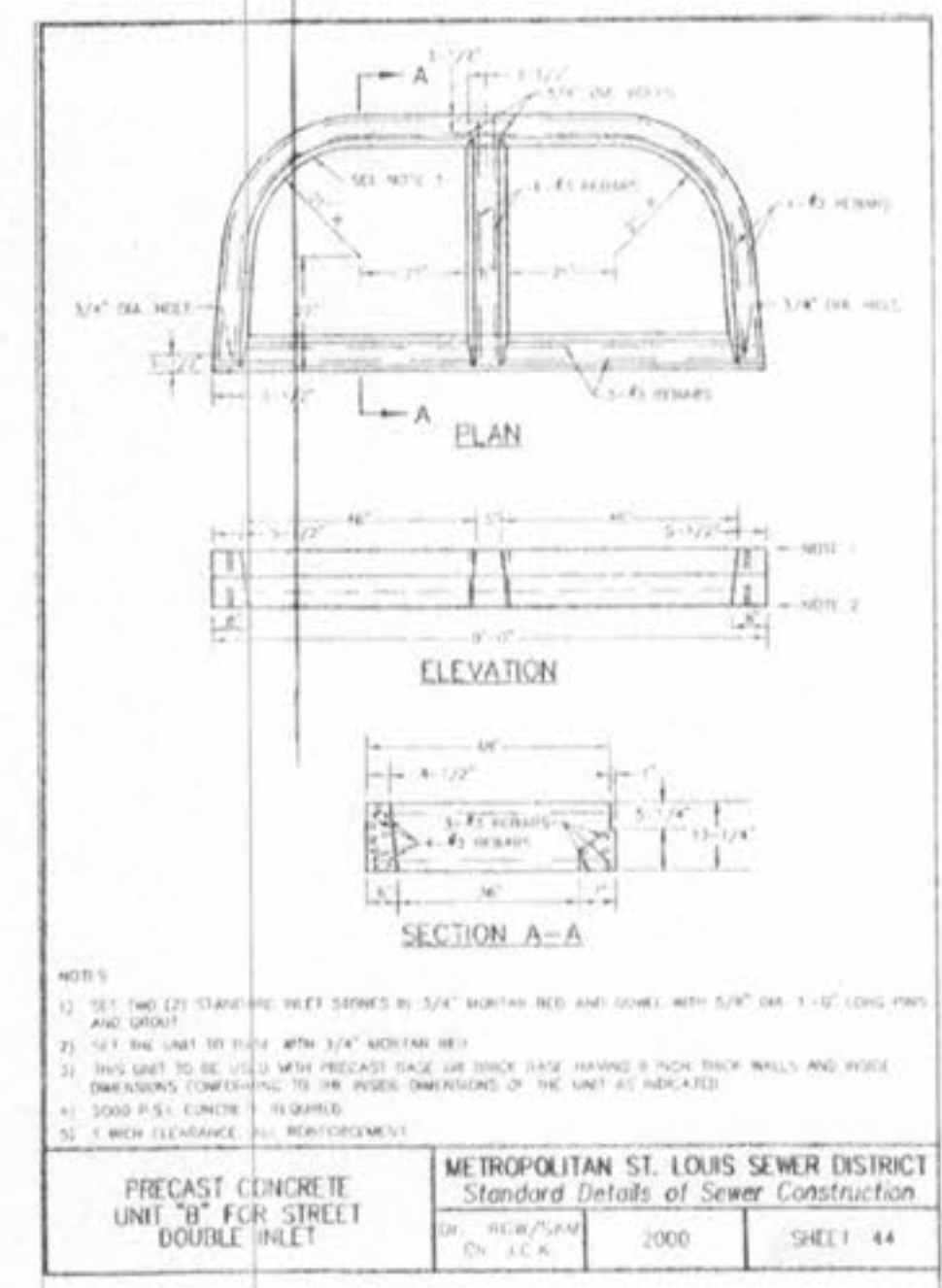
PRECAST CONCRETE UNIT FOR 4 WAY AREA INLET	METROPOLITAN ST. LOUIS SEWER DISTRICT Standard Details of Sewer Construction	2000	SHEET 41
--	---	------	----------



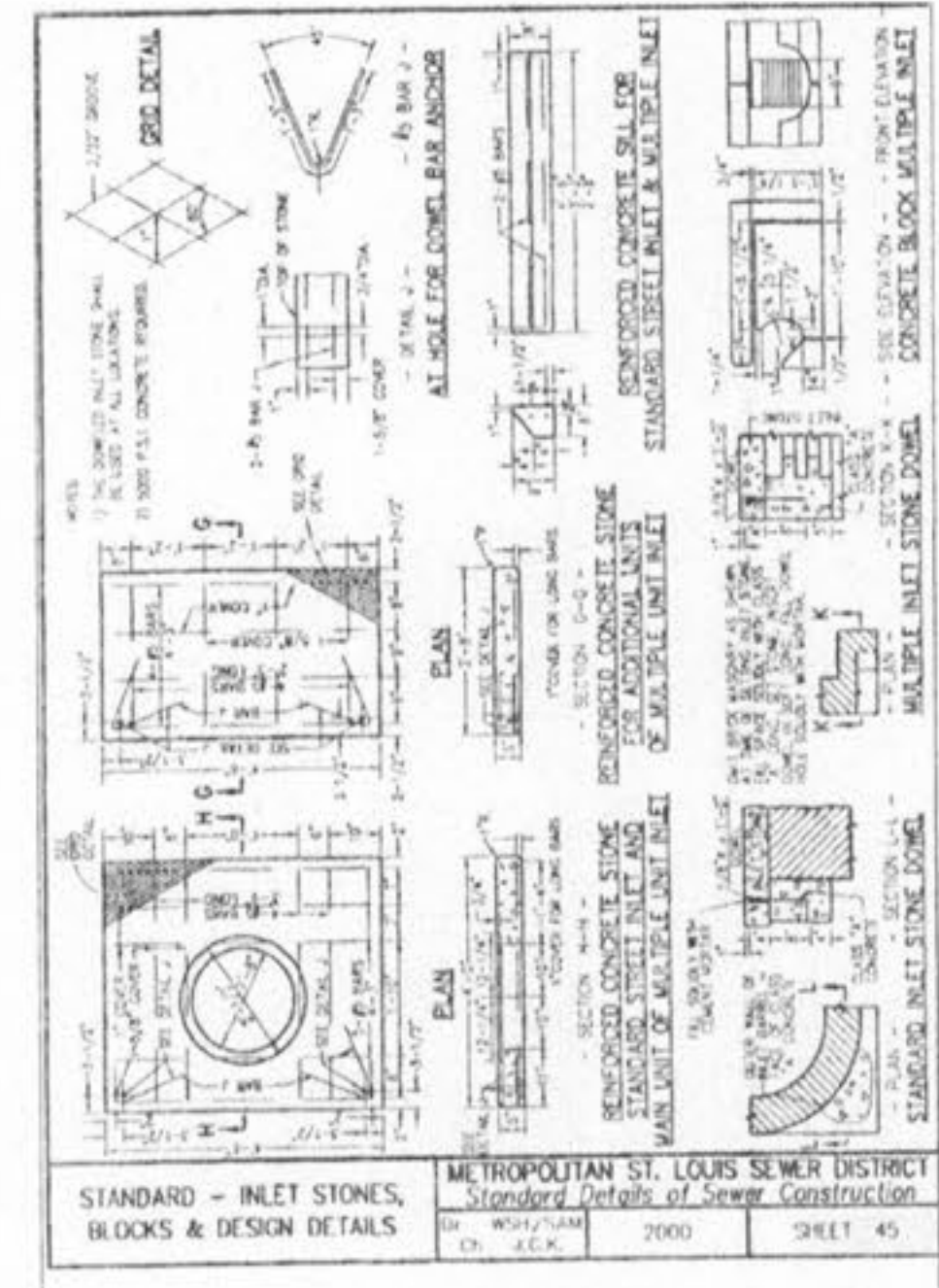
CONCRETE DOUBLE STREET INLET WITH PRECAST CONCRETE UNIT "A"	METROPOLITAN ST. LOUIS SEWER DISTRICT Standard Details of Sewer Construction	2000	SHEET 42
---	---	------	----------



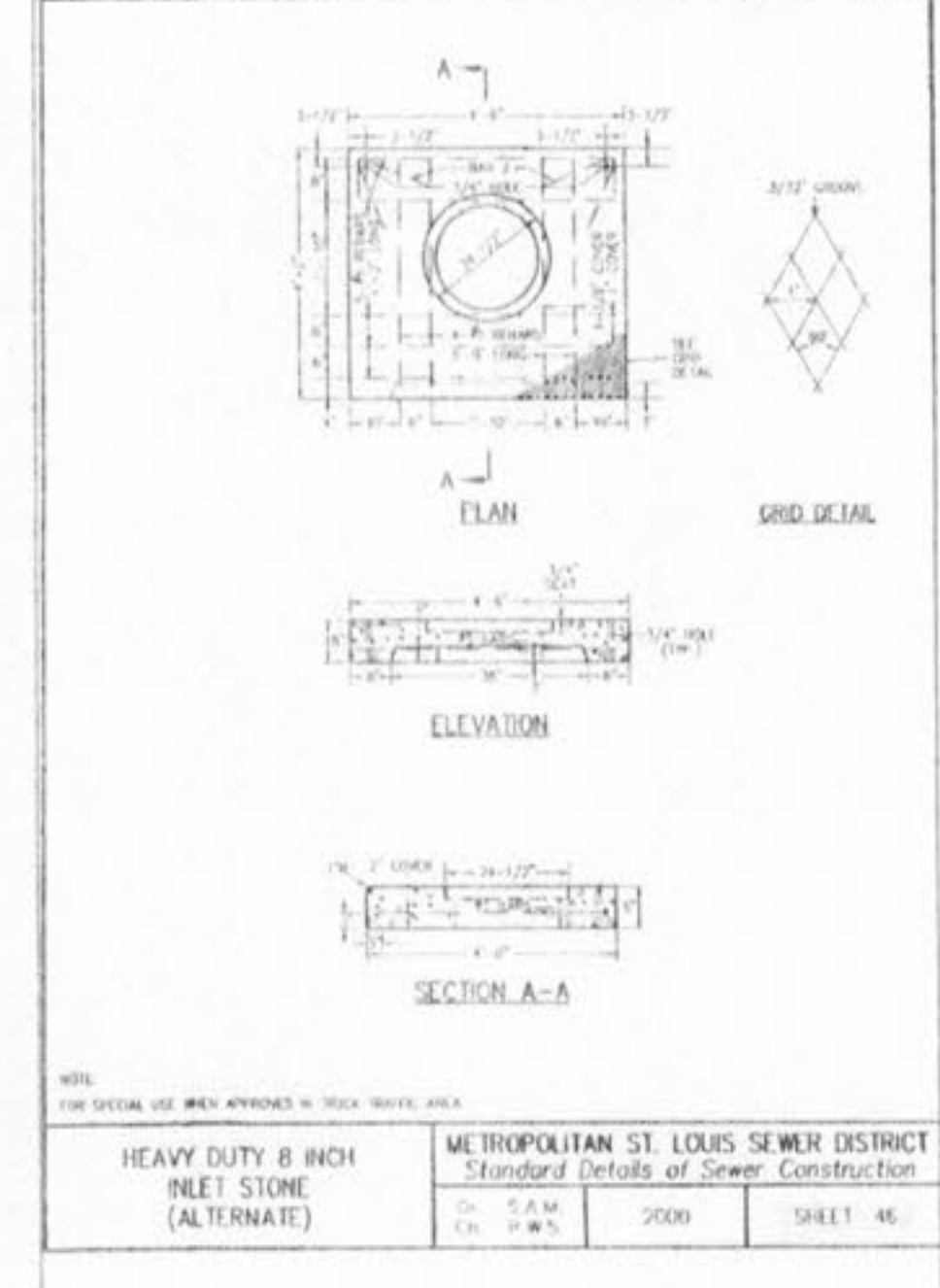
PRECAST CONCRETE UNIT "A" FOR STREET DOUBLE INLET	METROPOLITAN ST. LOUIS SEWER DISTRICT Standard Details of Sewer Construction	2000	SHEET 43
---	---	------	----------



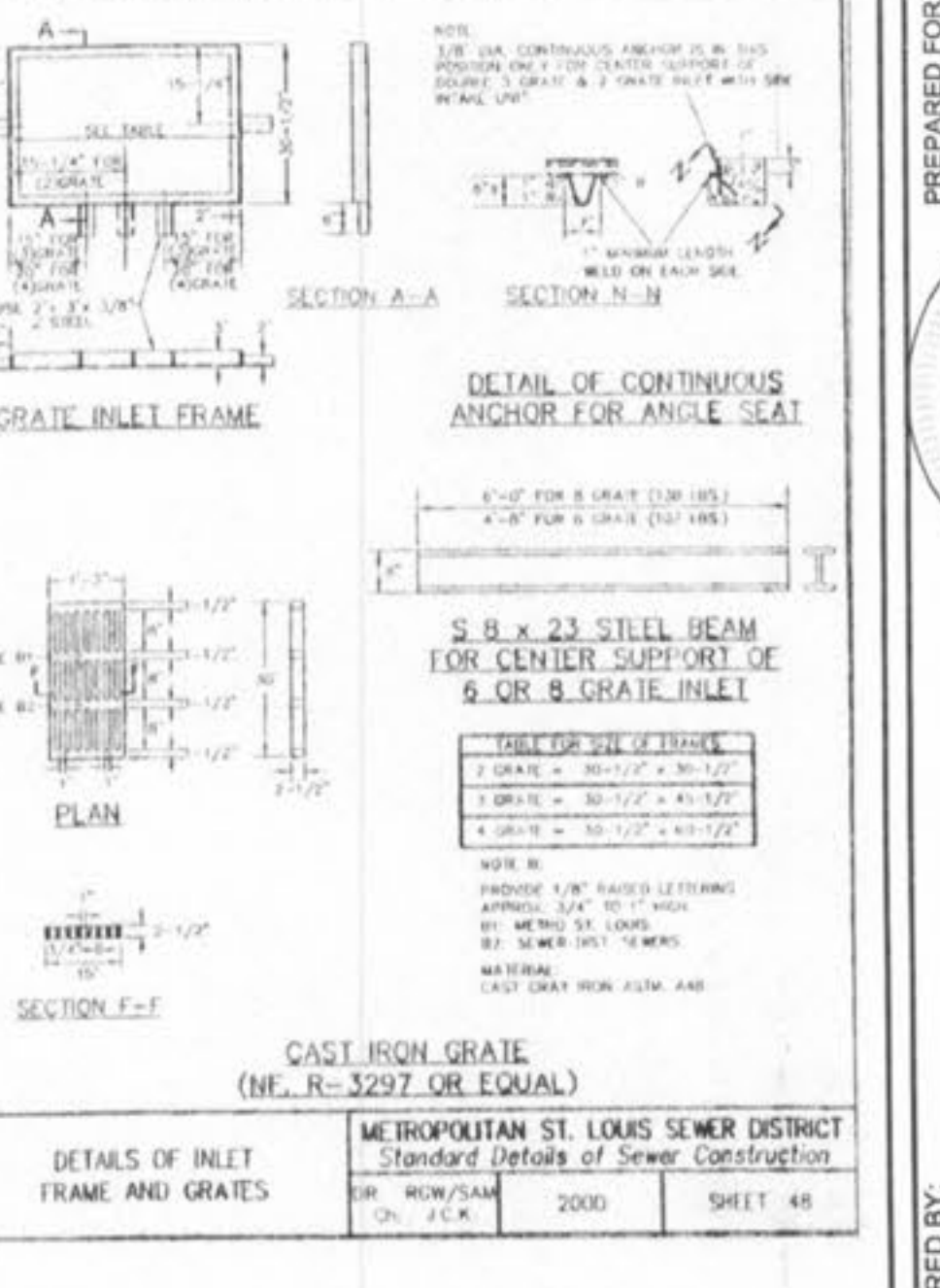
PRECAST CONCRETE UNIT "B" FOR STREET DOUBLE INLET	METROPOLITAN ST. LOUIS SEWER DISTRICT Standard Details of Sewer Construction	2000	SHEET 44
---	---	------	----------



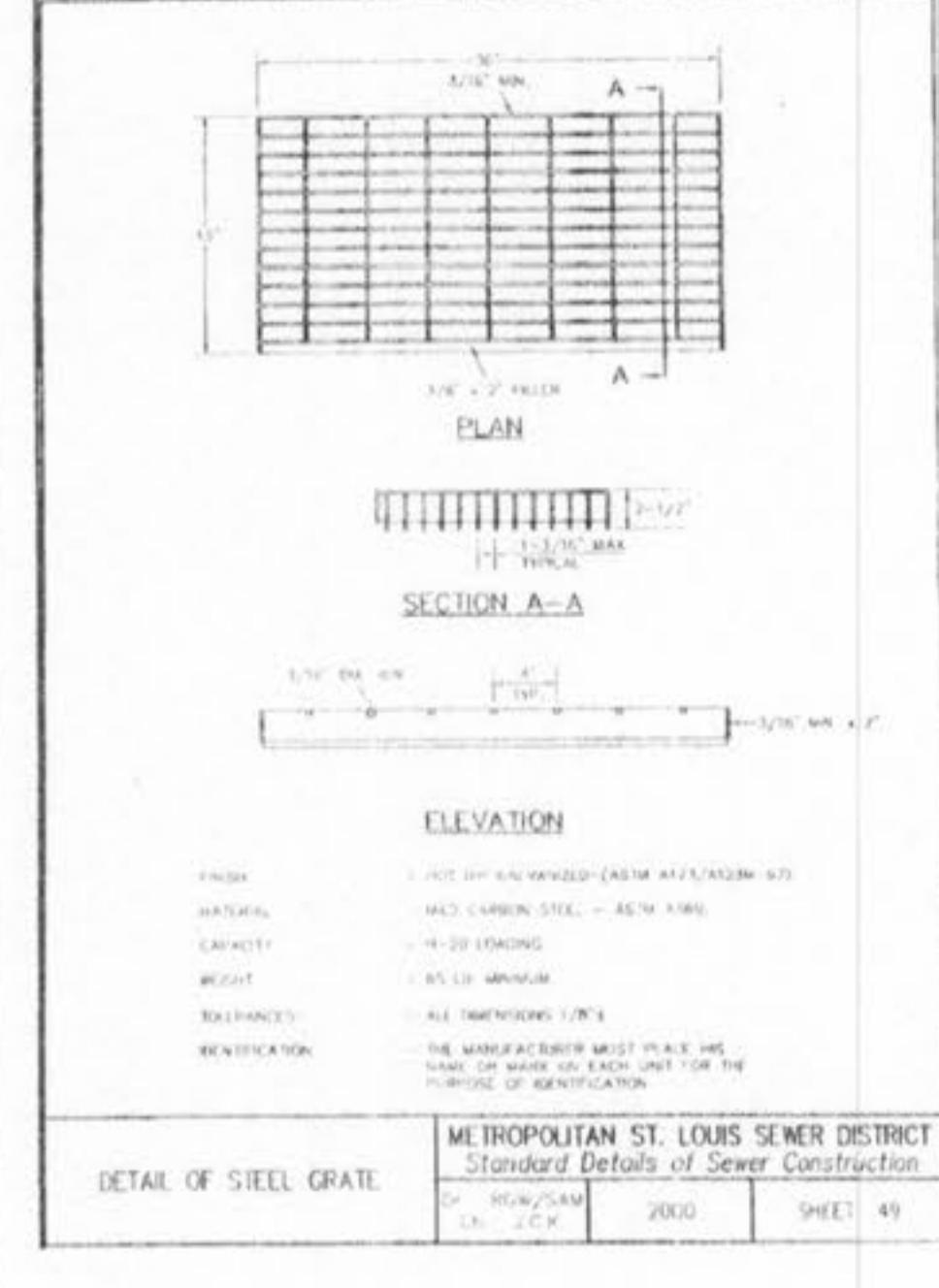
STANDARD - INLET STONES, BLOCKS & DESIGN DETAILS	METROPOLITAN ST. LOUIS SEWER DISTRICT Standard Details of Sewer Construction	2000	SHEET 45
--	---	------	----------



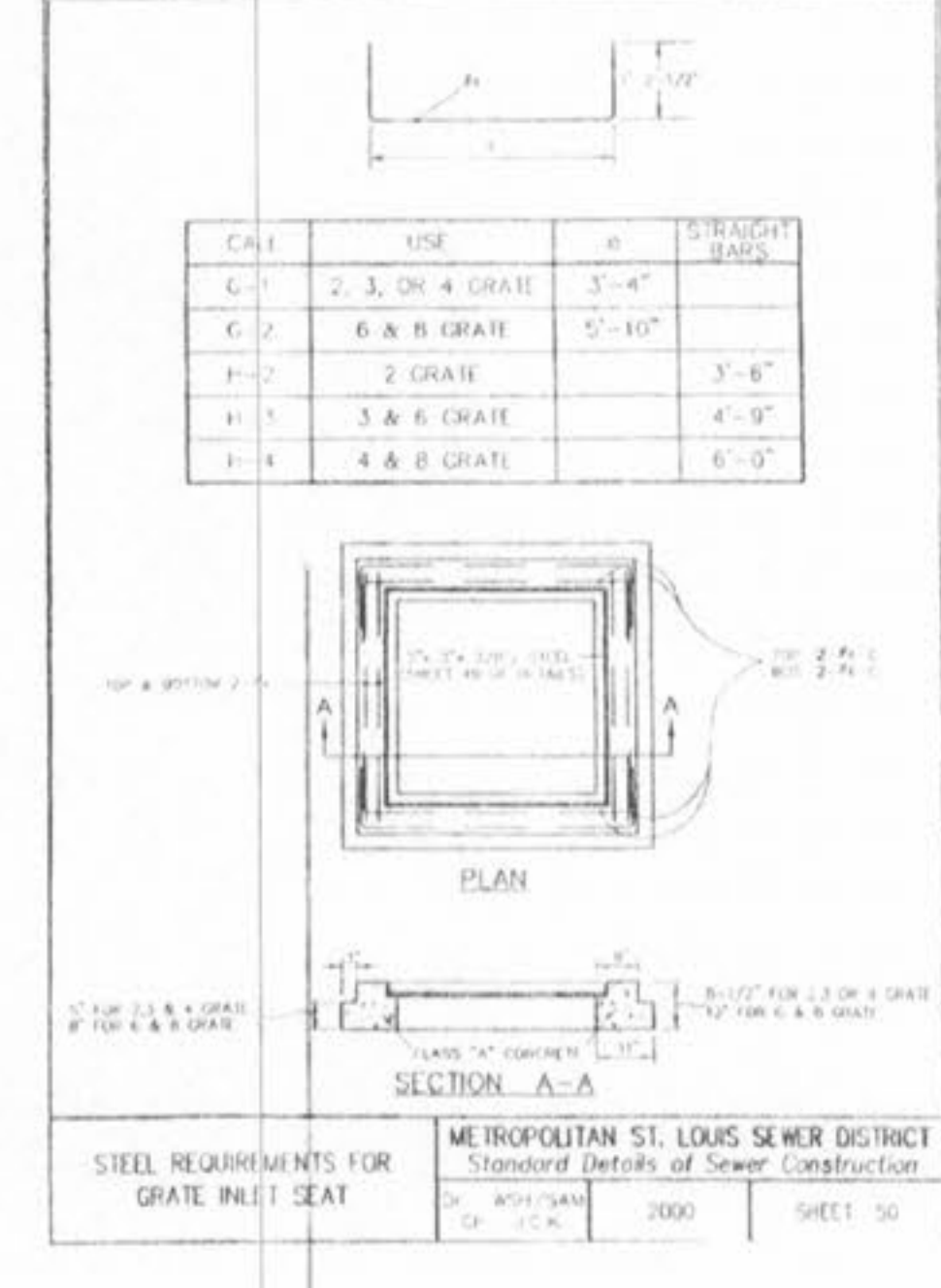
HEAVY DUTY 8 INCH INLET STONE (ALTERNATE)	METROPOLITAN ST. LOUIS SEWER DISTRICT Standard Details of Sewer Construction	2000	SHEET 46
---	---	------	----------



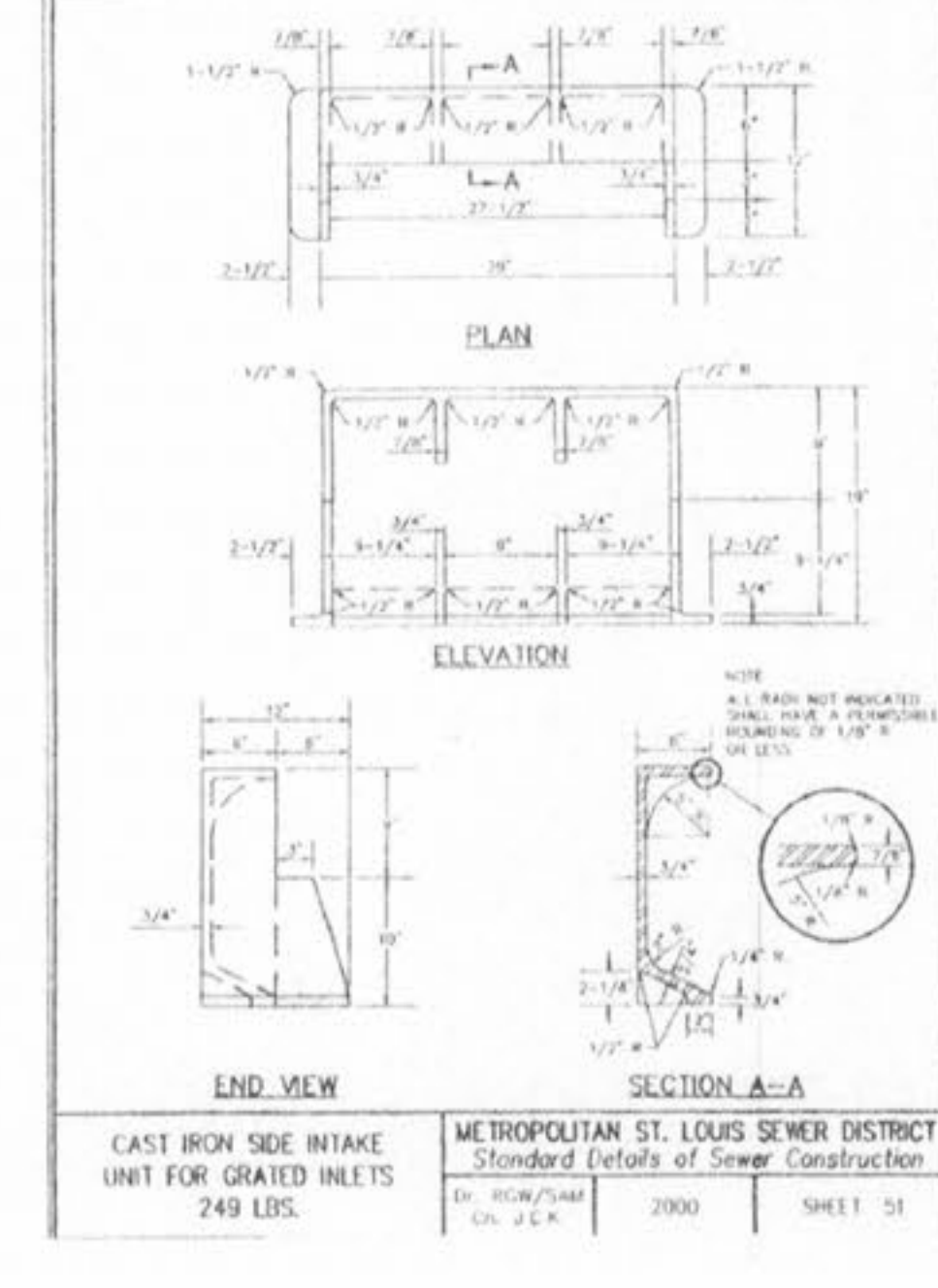
DETAILS OF INLET FRAME AND GRATES	METROPOLITAN ST. LOUIS SEWER DISTRICT Standard Details of Sewer Construction	2000	SHEET 48
-----------------------------------	---	------	----------



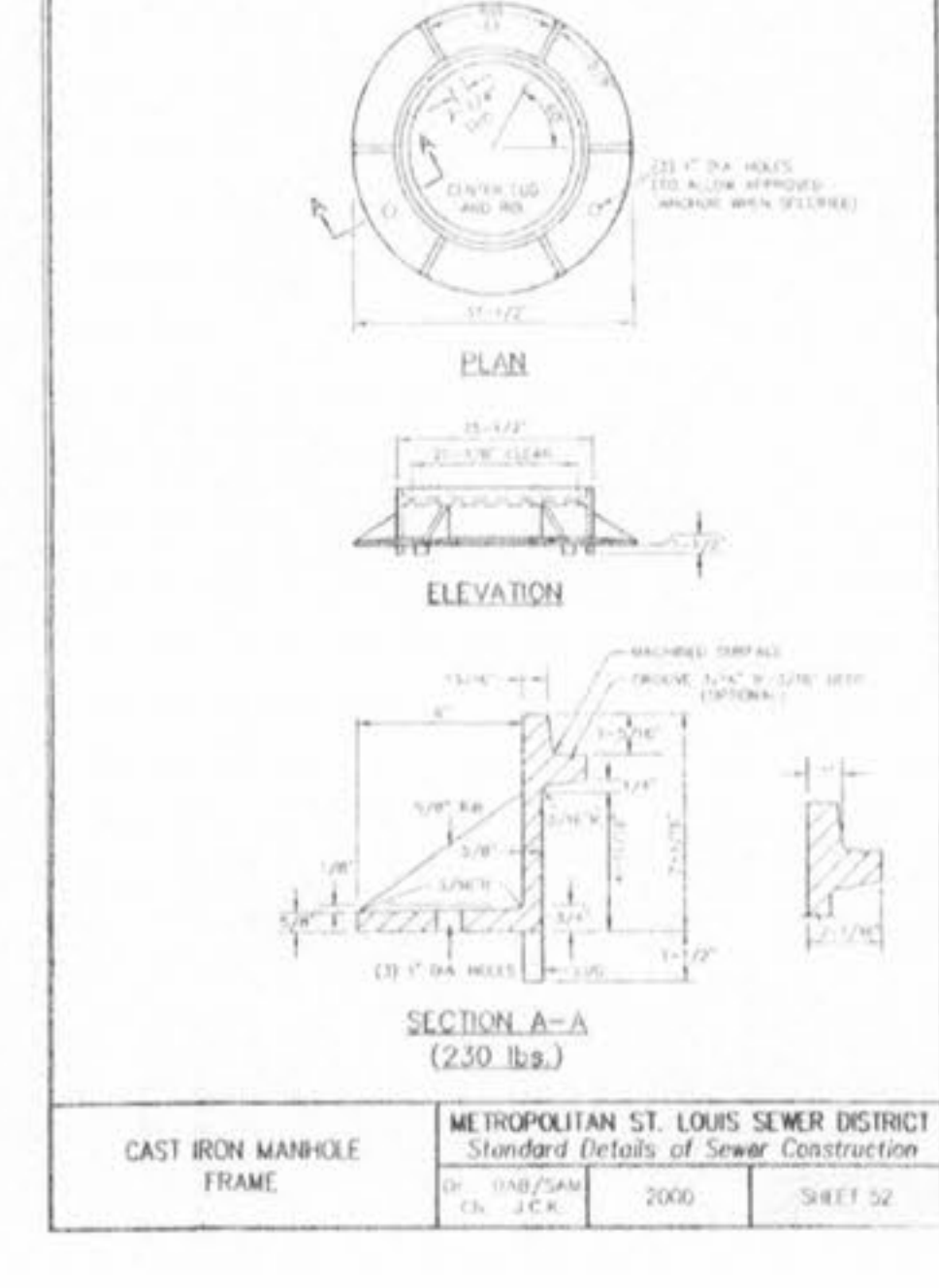
DETAIL OF STEEL GRATE	METROPOLITAN ST. LOUIS SEWER DISTRICT Standard Details of Sewer Construction	2000	SHEET 49
-----------------------	---	------	----------



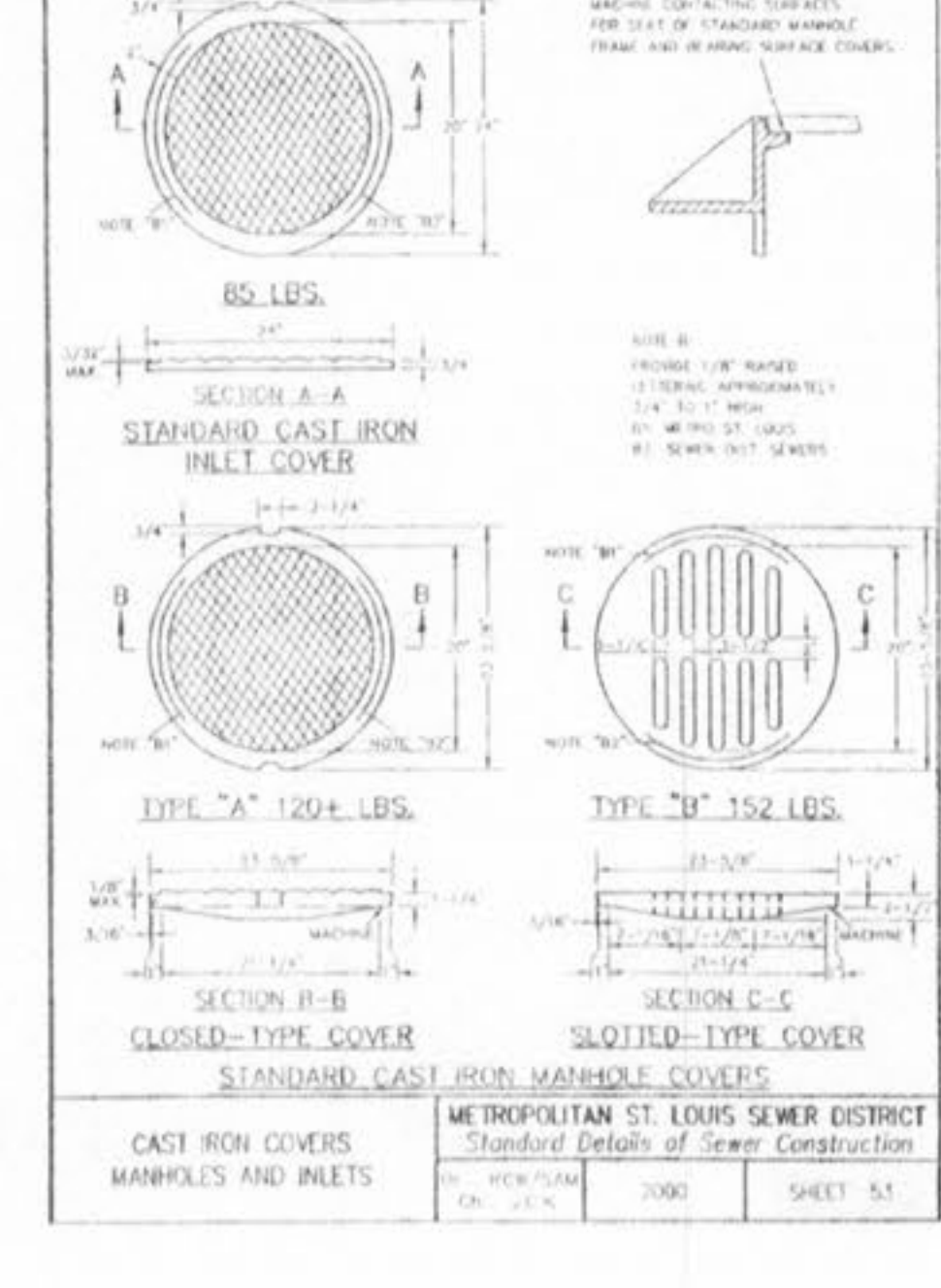
STEEL REQUIREMENTS FOR GRATE INLET SEAT	METROPOLITAN ST. LOUIS SEWER DISTRICT Standard Details of Sewer Construction	2000	SHEET 50
---	---	------	----------



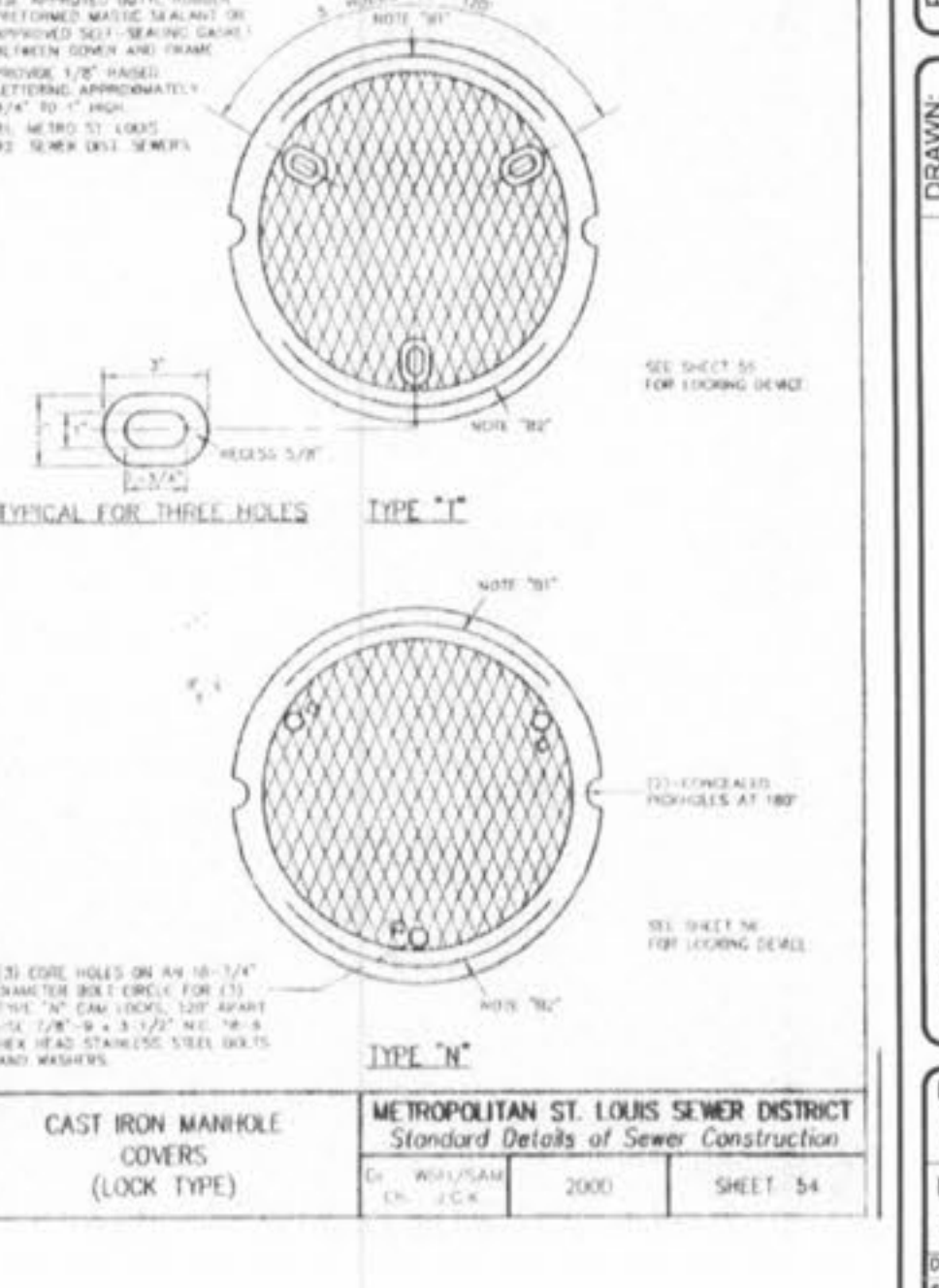
CAST IRON SIDE INTAKE UNIT FOR GRATED INLETS 249 LBS.	METROPOLITAN ST. LOUIS SEWER DISTRICT Standard Details of Sewer Construction	2000	SHEET 51
---	---	------	----------



CAST IRON MANHOLE FRAME	METROPOLITAN ST. LOUIS SEWER DISTRICT Standard Details of Sewer Construction	2000	SHEET 52
-------------------------	---	------	----------



CAST IRON COVERS, MANHOLES AND INLETS	METROPOLITAN ST. LOUIS SEWER DISTRICT Standard Details of Sewer Construction	2000	SHEET 53
---------------------------------------	---	------	----------



CAST IRON MANHOLE COVERS (LOOK TYPE)	METROPOLITAN ST. LOUIS SEWER DISTRICT Standard Details of Sewer Construction	2000	SHEET 54
--------------------------------------	---	------	----------

ISSUE REMARKS/DATE
09/15/03 - Pinned

PREPARED FOR:
WHISPERING L.L.C.
5091 NEW BAUMGARTNER ROAD
ST. LOUIS, MISSOURI
(314) 487-6717

PREPARED BY:
THE STERLING CO.
ENGINEERS & SURVEYORS
5055 NEW BAUMGARTNER ROAD
ST. LOUIS, MISSOURI 63129
(314) 646-3440 FAX: (314) 646-3441
E-Mail: Sterling@sterling-co.net

DRAWN: [Blank]
DESIGNED: [Blank]
CHECKED: *Za*
PROJECT: [Blank]
SHEET TITLE: CONSTRUCTION DETAILS

NO. 03 02 021
M.S.D. SHEET
PW CD5
ORIGINAL FILE LOCATION
D:\MSD\03-02-021
03/15/03