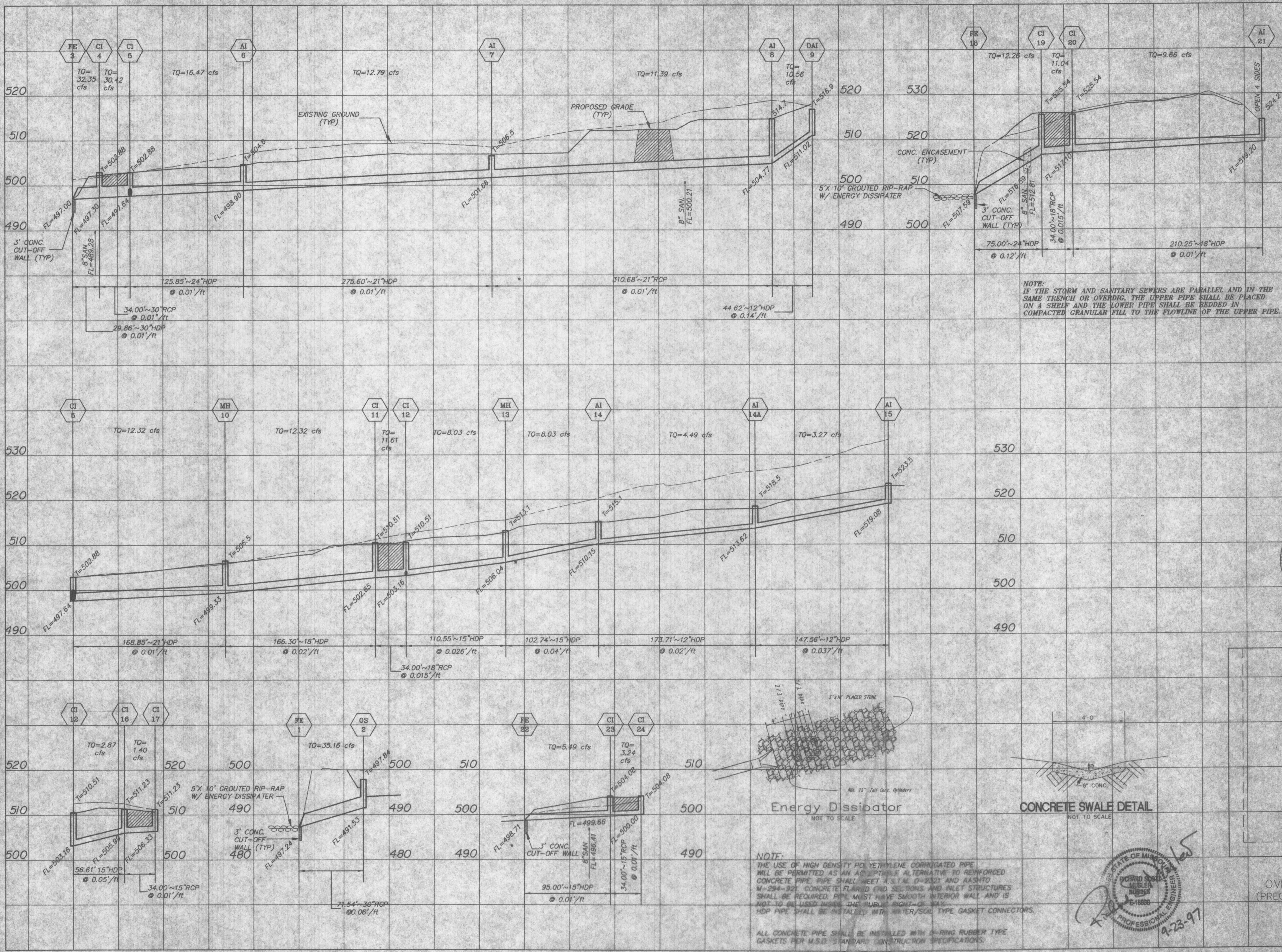


REV. 09/11/97
REV. 09/23/97

SCALE:
1"=50'HORIZ
1"=10'VERT

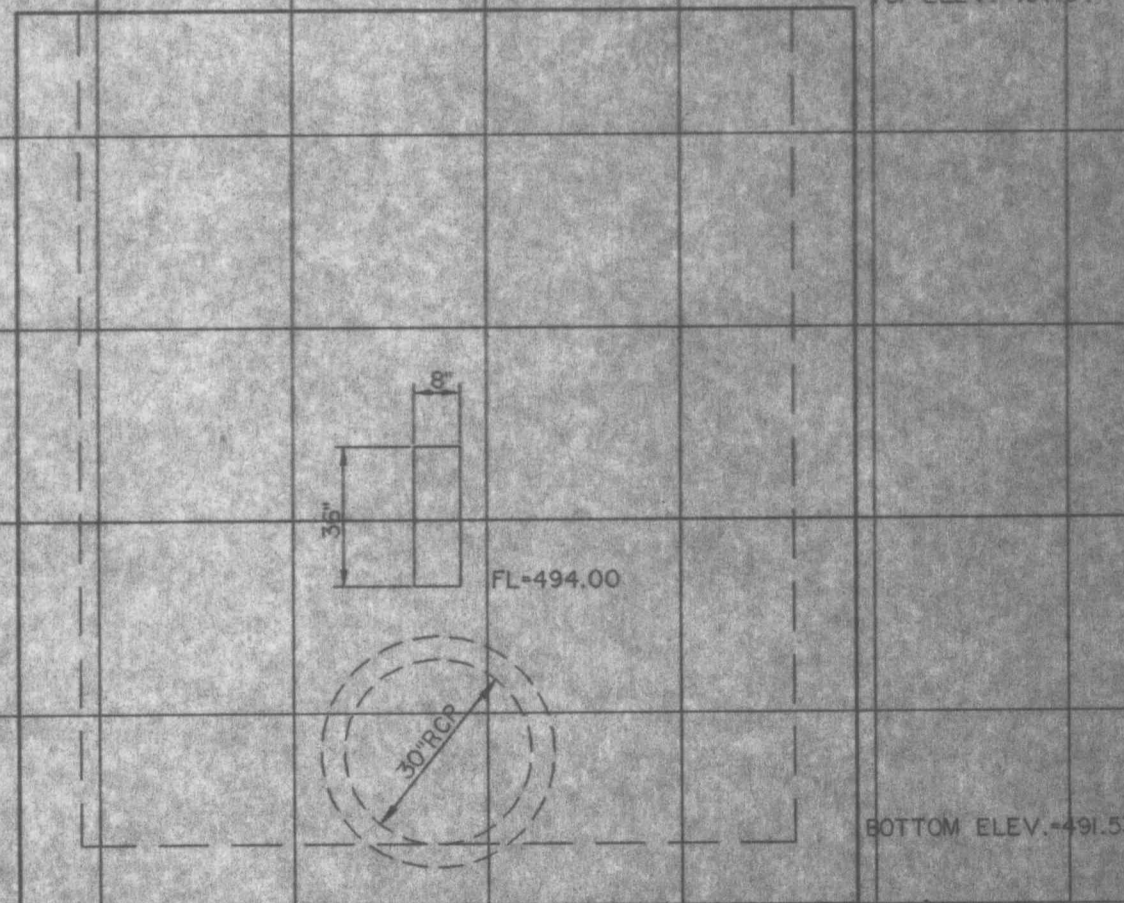
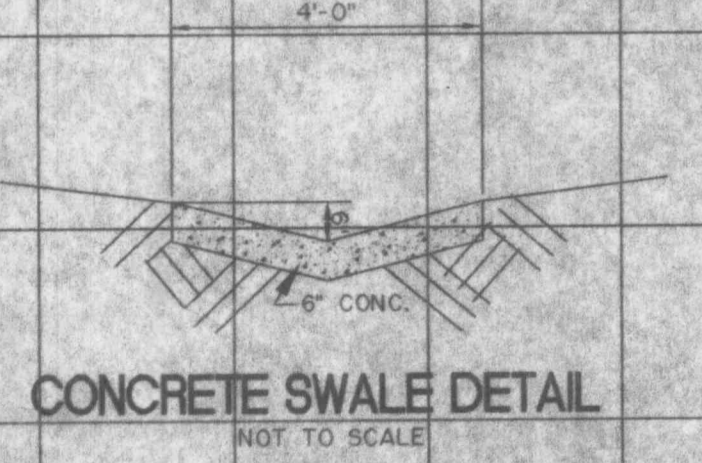
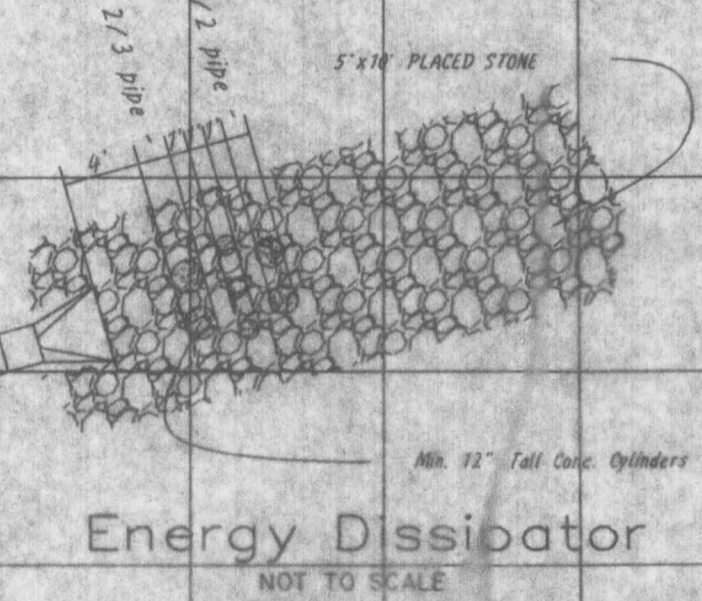
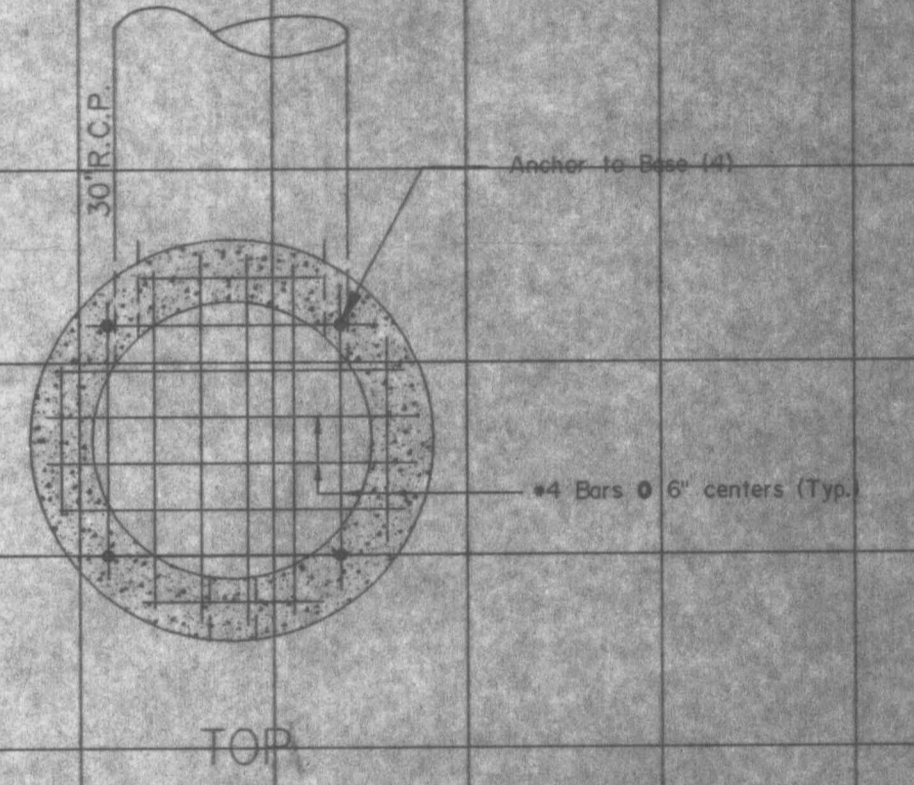
DATE	
BY	
DESIGNED	
PLOTTED	
REVISIONS	
NO.	
DATE	
BY	
DESCRIPTION	
NO.	
DATE	
BY	
DESCRIPTION	
NO.	

DATE	
BY	
DESIGNED	
PLOTTED	
REVISIONS	
NO.	
DATE	
BY	
DESCRIPTION	
NO.	
DATE	
BY	
DESCRIPTION	
NO.	



NOTE:
IF THE STORM AND SANITARY SEWERS ARE PARALLEL AND IN THE SAME TRENCH OR OVERDIG, THE UPPER PIPE SHALL BE PLACED ON A SHELF AND THE LOWER PIPE SHALL BE BEDDED IN COMPACTED GRANULAR FILL TO THE FLOWLINE OF THE UPPER PIPE.

The underground utilities shown herein were plotted from available information and do not necessarily reflect the actual existence, nonexistence, size, type, number, or location of these or other utilities. The general contractor shall be responsible for verifying the actual location of all underground utilities, shown or not shown, and said utilities shall be located in the field prior to any grading, excavation, or construction of improvements. These provisions shall in no way absolve any party from complying with the Underground Facility Safety and Damage Prevention Act, Chapter 319, RSMo.



NOTE:
THE USE OF HIGH DENSITY POLYETHYLENE CORRUGATED PIPE WILL BE PERMITTED AS AN ACCEPTABLE ALTERNATIVE TO REINFORCED CONCRETE PIPE. PIPE SHALL MEET A.S.T.M. D-2321 AND AASHTO M-294-92. CONCRETE FLARED END SECTIONS AND INLET STRUCTURES SHALL BE REQUIRED. PIPE MUST HAVE SMOOTH INTERIOR WALL AND IS NOT TO BE USED INSIDE THE PUBLIC RIGHT-OF-WAY. HDP PIPE SHALL BE INSTALLED WITH WATER/SOIL TYPE GASKET CONNECTORS.

ALL CONCRETE PIPE SHALL BE INSTALLED WITH O-RING RUBBER TYPE GASKETS PER M.S.D. STANDARD CONSTRUCTION SPECIFICATIONS.

PROFESSIONAL ENGINEER
RICHARD S. SMITH
STATE OF MISSOURI
LICENSE NO. 18888
9-23-97

APPROVED
9/27/97