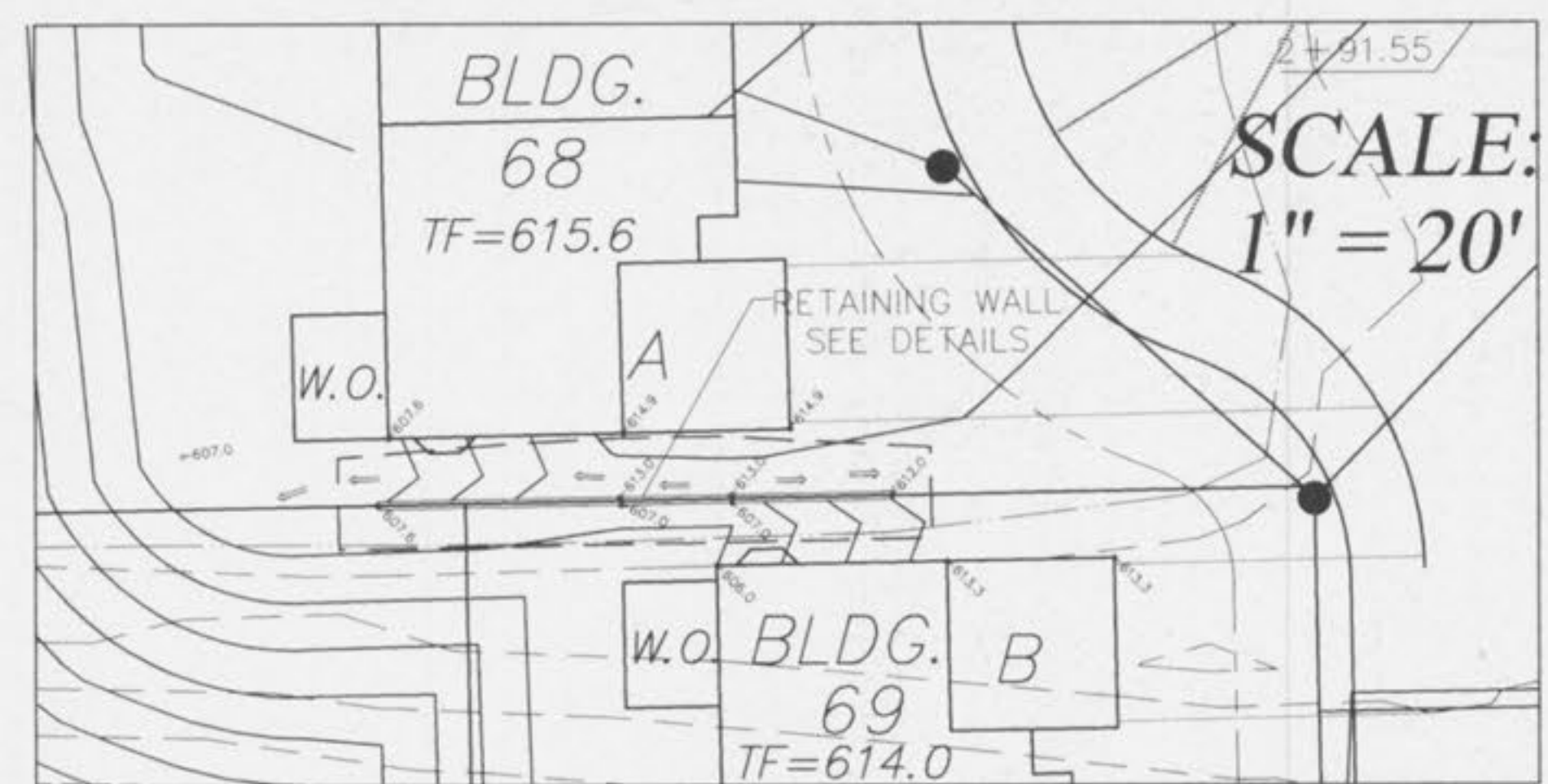
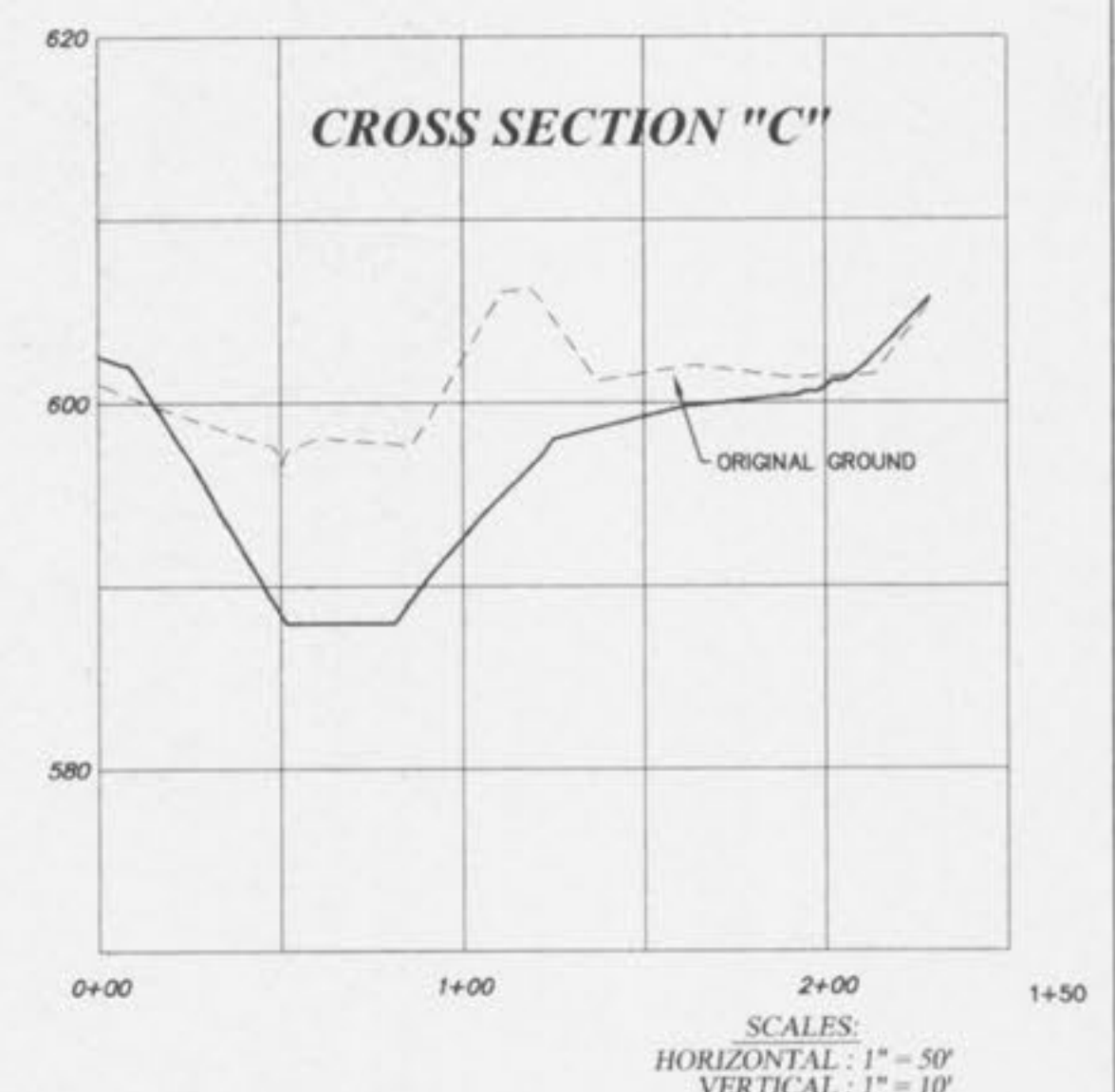
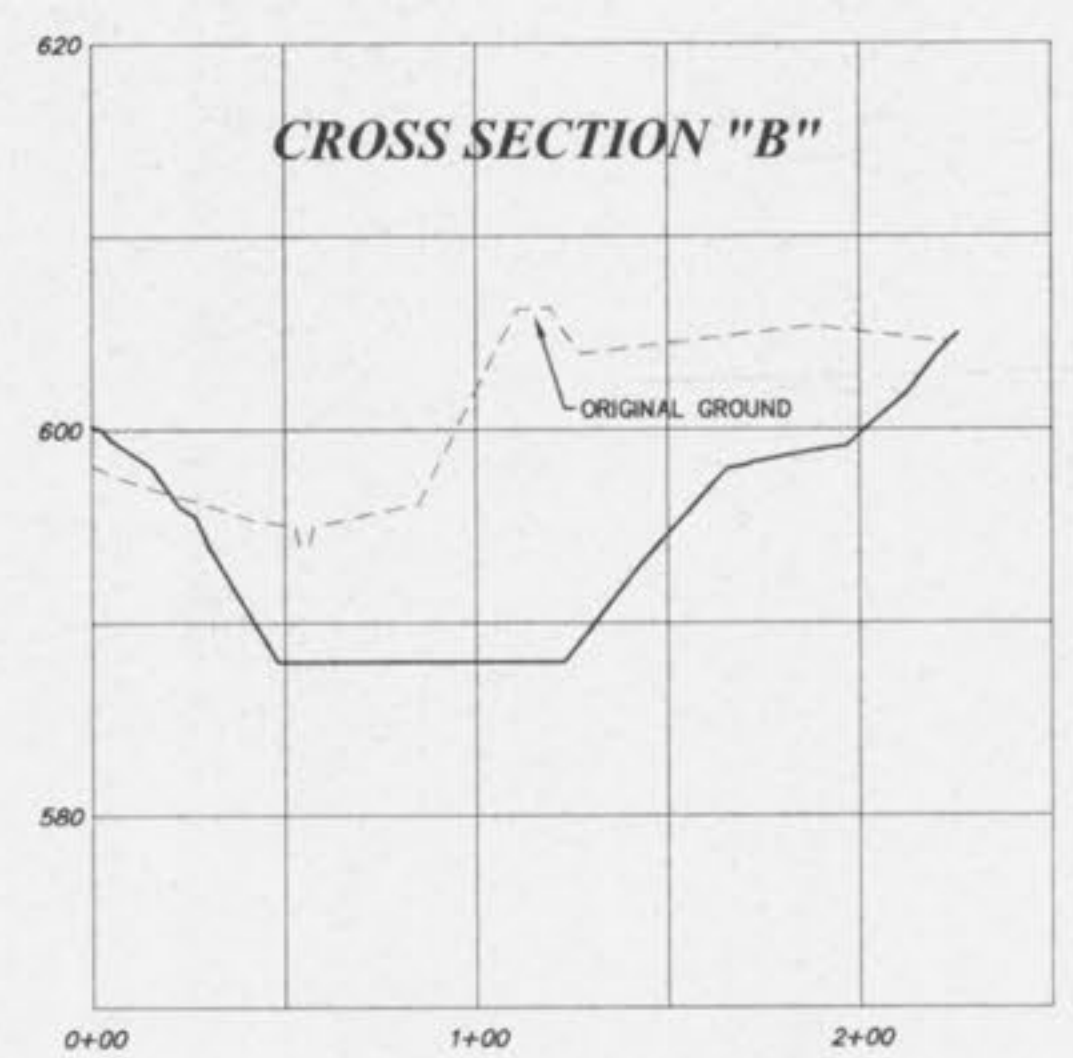
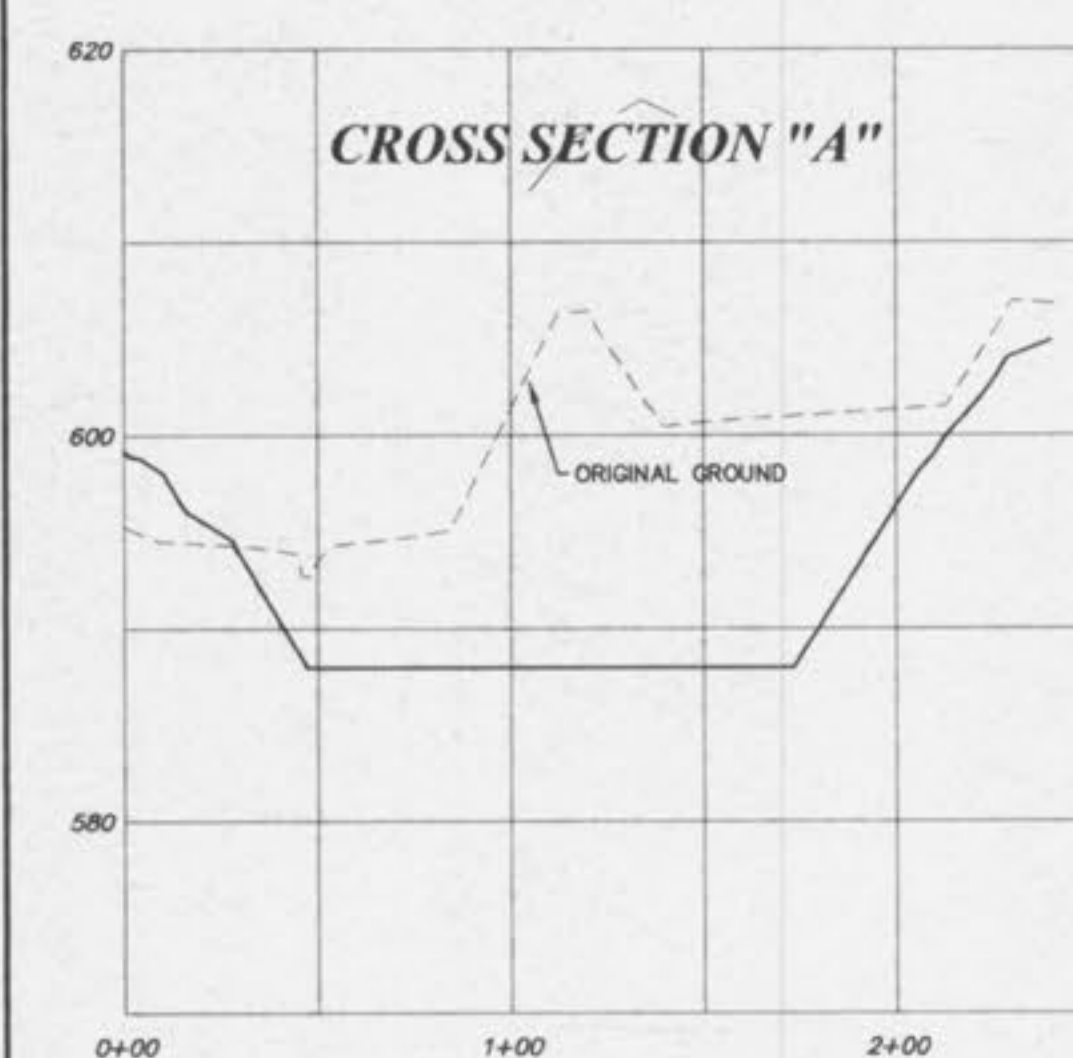
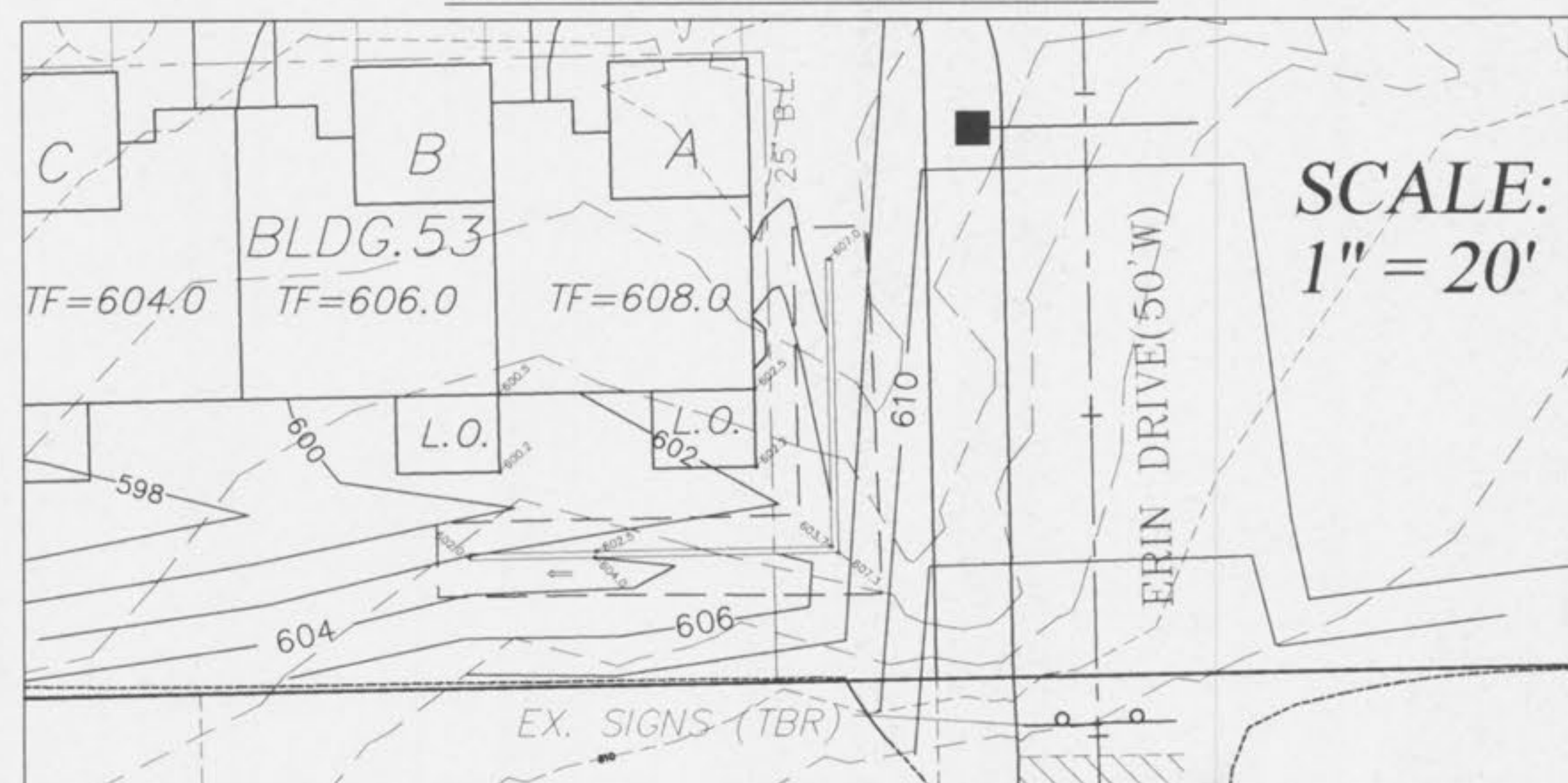


NOTE: RETAINING WALL EASEMENTS ARE BASED ON THE FOLLOWING:
 1. INSTALLATION PER "HERCULES WITH DRAINAGE ROCK" SECTION
 2. 5' FROM BASE OF WALL
 3. 5' OUTSIDE OF 20' BATTER FROM INSIDE EDGE OF FOOTING

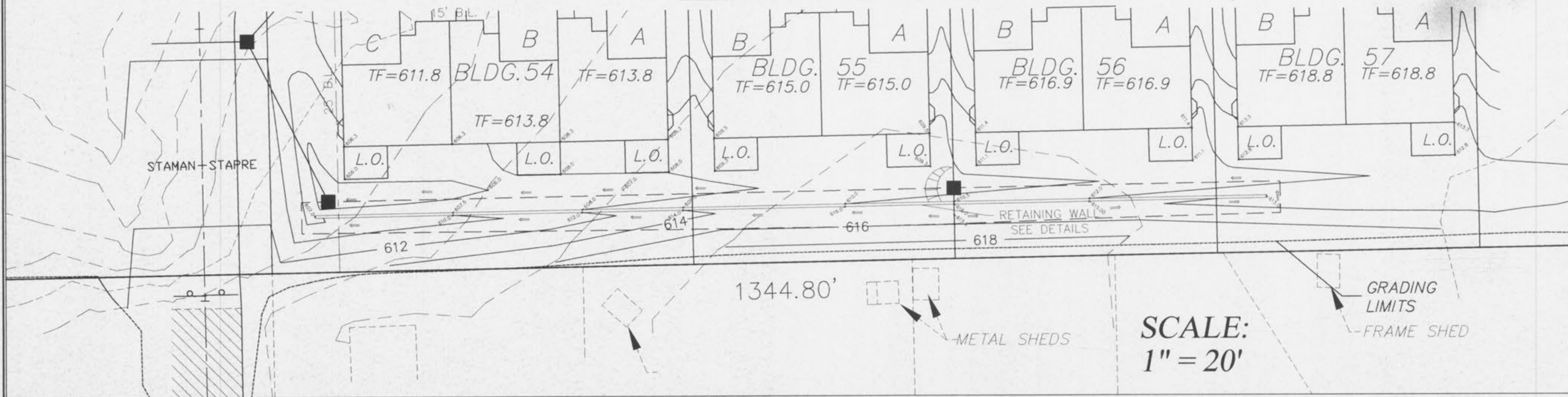
RETAINING WALL DETAIL



RETAINING WALL DETAIL



RETAINING WALL DETAIL



PICKETT RAY & SILVER
 CIVIL ENGINEERS
 PLANNERS
 LAND SURVEYORS
 333 Mid Rivers Mall Drive
 St. Peters, MO 63376
 Phone (636) 397-1211
 Fax (636) 397-1104

WHITEGATE VILLAS
 ADDITION
 RETAINING WALL /
 BASIN CROSS SECTION DETAILS
 Prepared For:
 SUMMIT POINTE L.C.
 239 FOX HILL ROAD
 ST. CHARLES, MO 63301
 636-940-9300

REVISIONS	NO.	DATE	REV. BY	REV. BY
	1	09-06-02	REV. PER CITY OF FALLON	
	2	09-23-02	REV. PER CITY OF FALLON	

ENGINEERS AUTHENTICATION
 The responsibility for professional engineering liability on this project is hereby limited to the set of plans authenticated by the seal, signature, and date hereunder attached. Responsibility is disclaimed for all other engineering plans involved in this project and specifically excludes revisions after this date unless reauthenticated.
 PICKETT, RAY & SILVER, INC.
 STATE OF MISSOURI
 HAROLD J. BARTCH
 REGISTERED PROFESSIONAL ENGINEER
 NUMBER E-17751

DRAWN	ABK	DATE	07-15-02
CHECKED	DWD	DATE	07-15-02
PROJECT #	02041.SUPO.01R	TASK #	2
FIELD BOOK	XXX		

WHITEGATE VILLAS
 RETAINING WALL /
 BASIN CROSS SECTION DETAILS
 SHEET 14 OF 22
 © Copyright 2002 by Pickett, Ray & Silver Inc.

\\1server-prs\projects\02041\dwg\02041DETAILS.dwg, 09/23/2002 01:31:16 PM