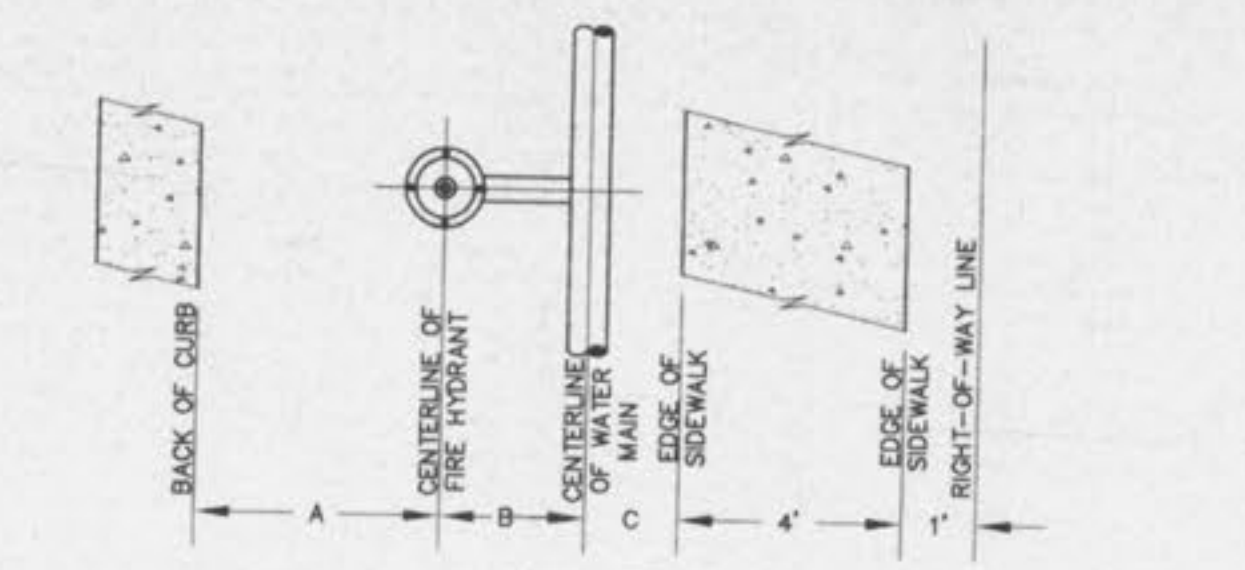
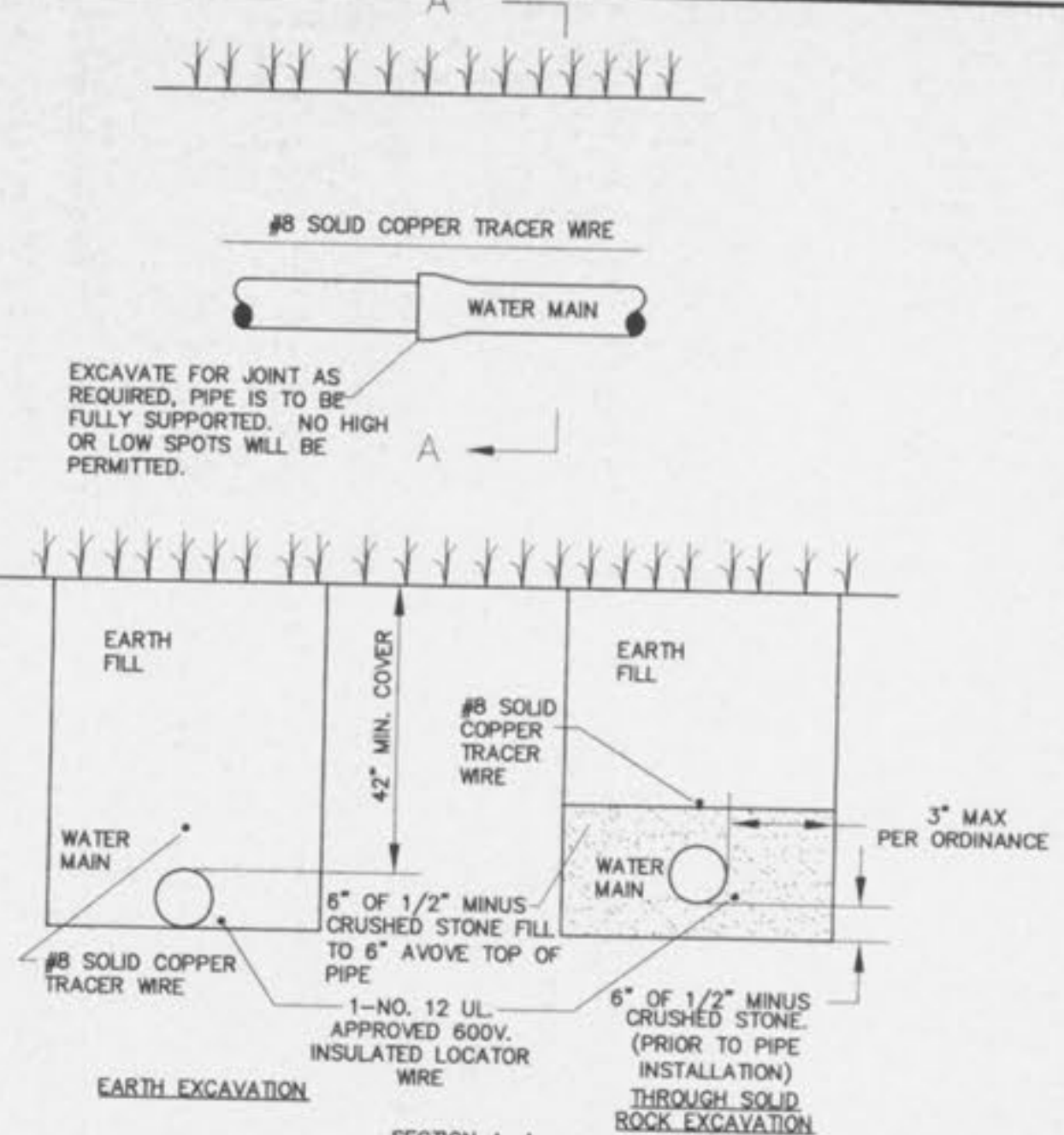


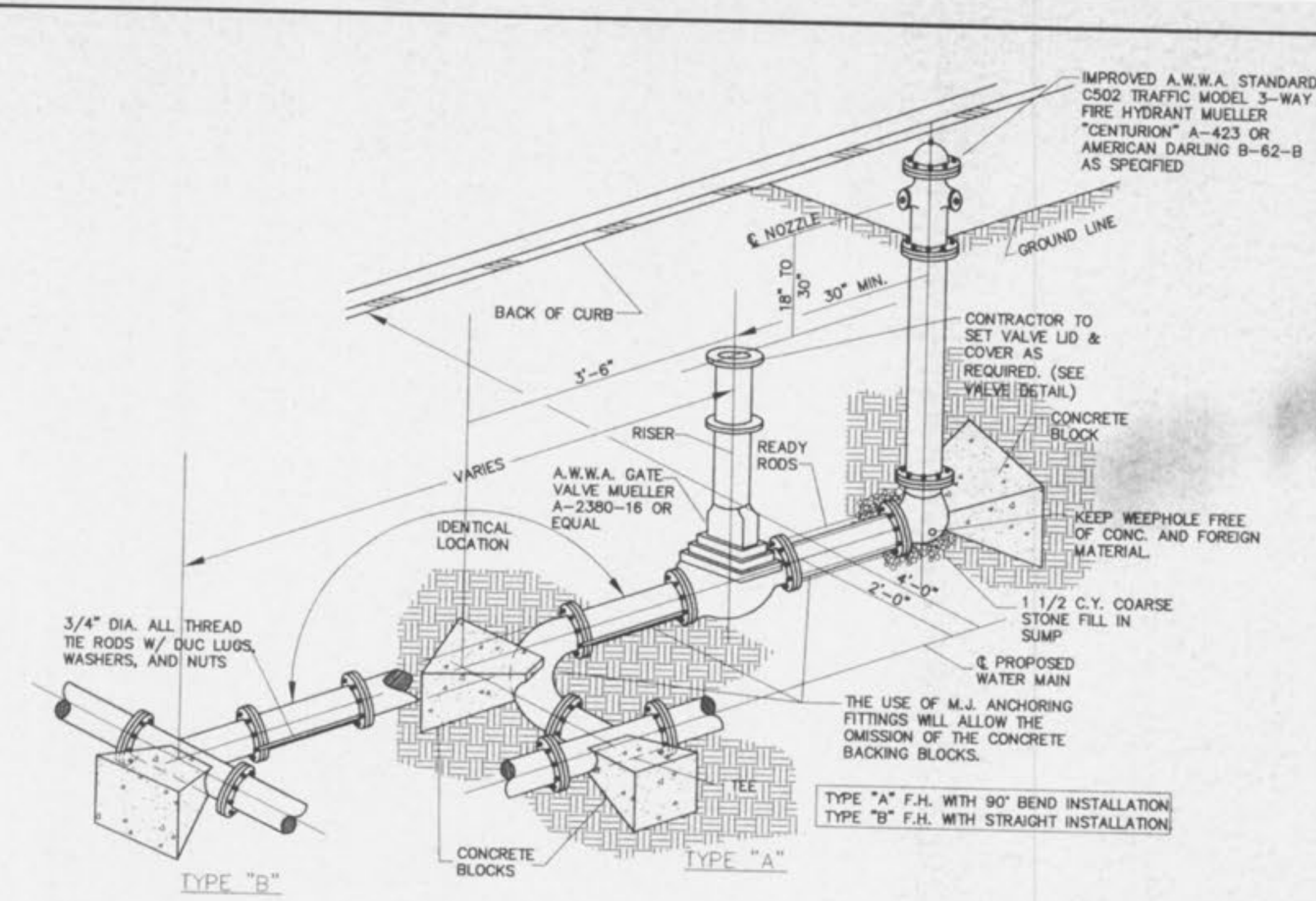
**FLUSHING HYDRANT DETAIL**  
NOT TO SCALE



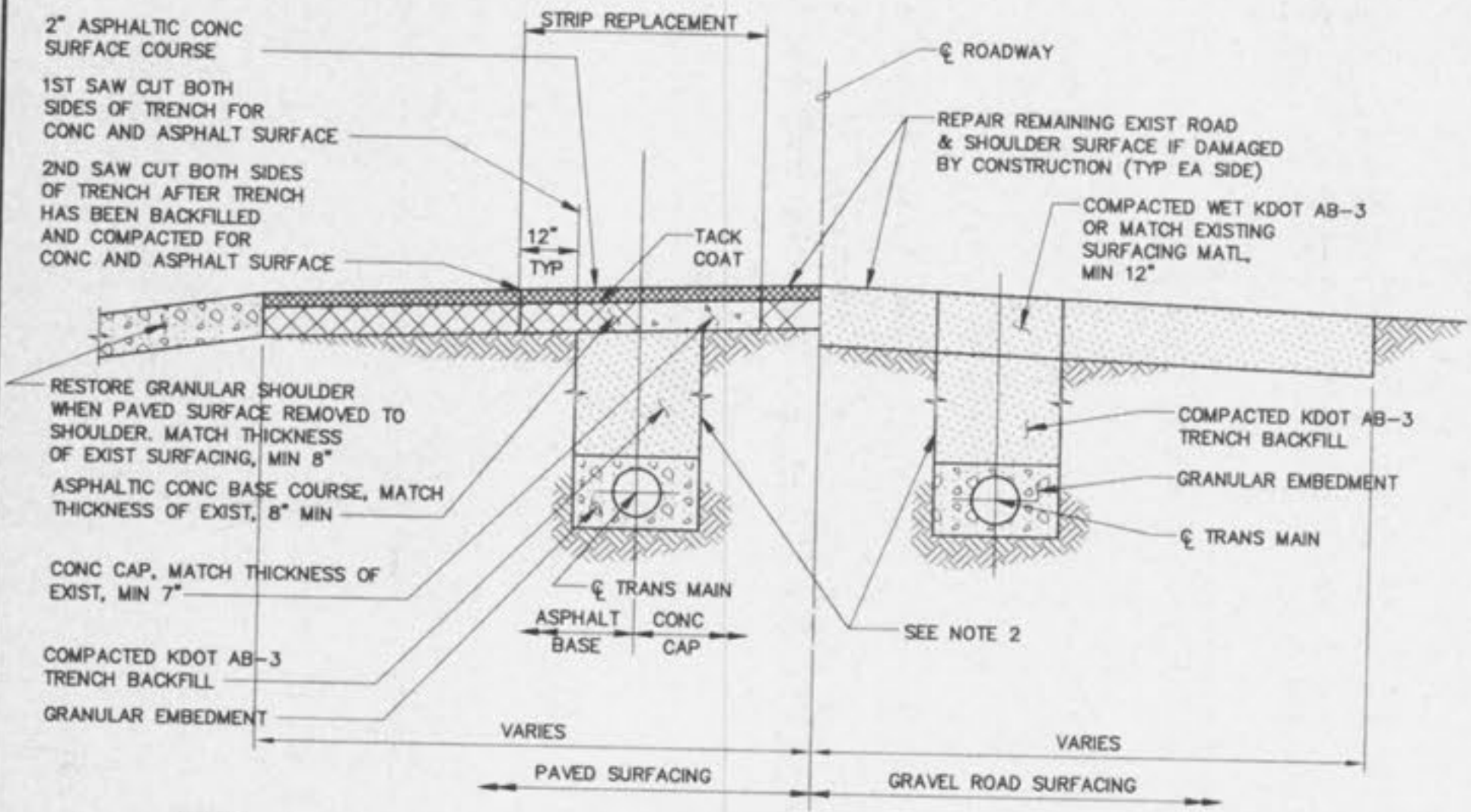
**TYPICAL WATER MAIN AND FIRE HYDRANT LOCATIONS**  
NOT TO SCALE



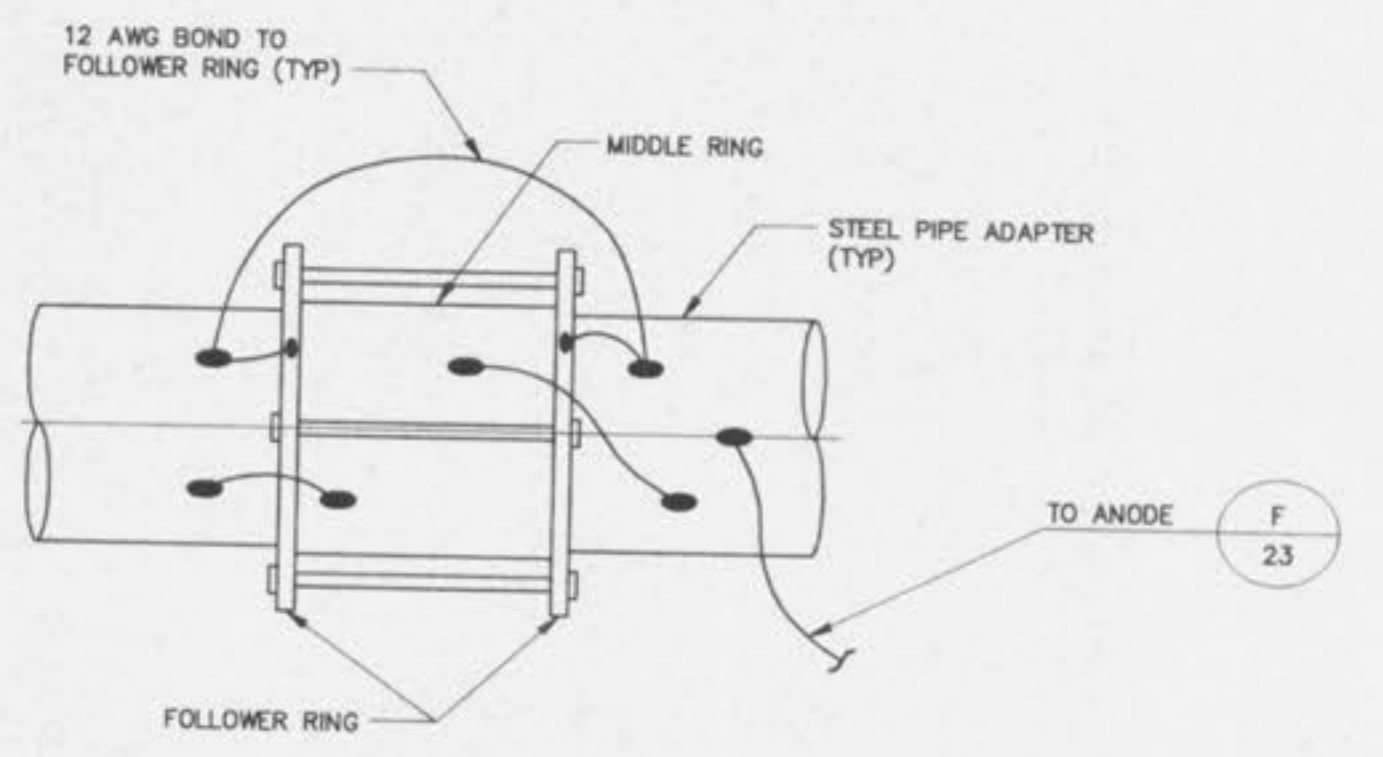
**TYPICAL WATER MAIN INSTALLATION DETAILS**  
NOT TO SCALE



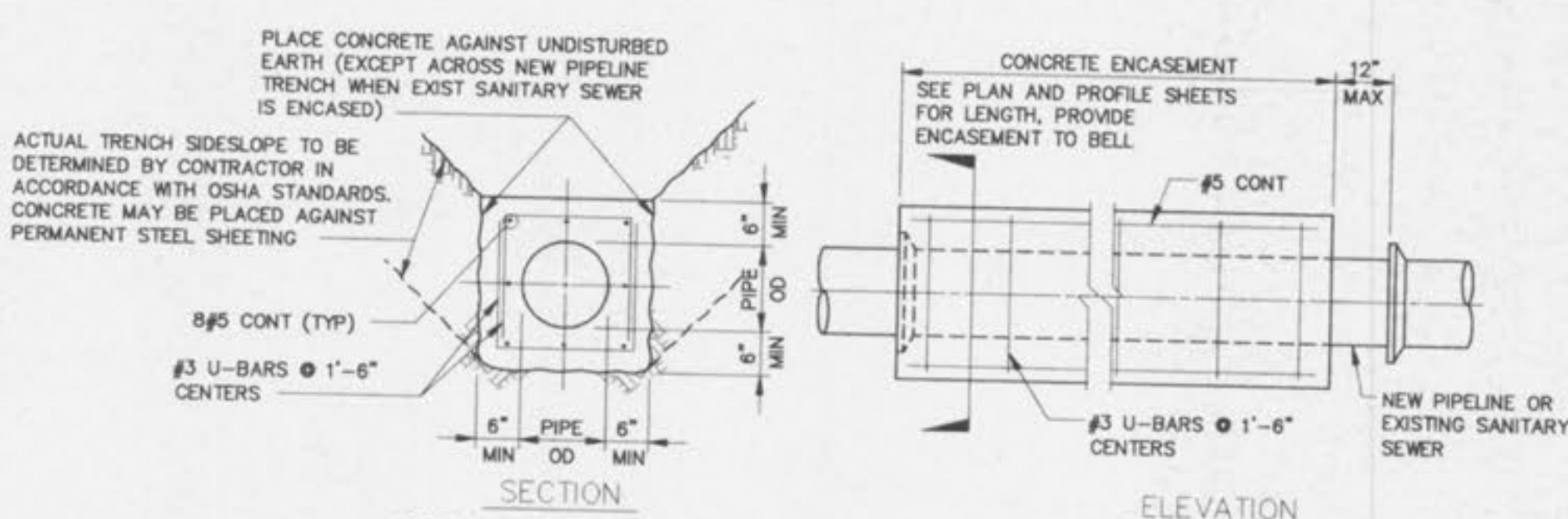
**FIRE HYDRANT DETAIL**  
NOT TO SCALE



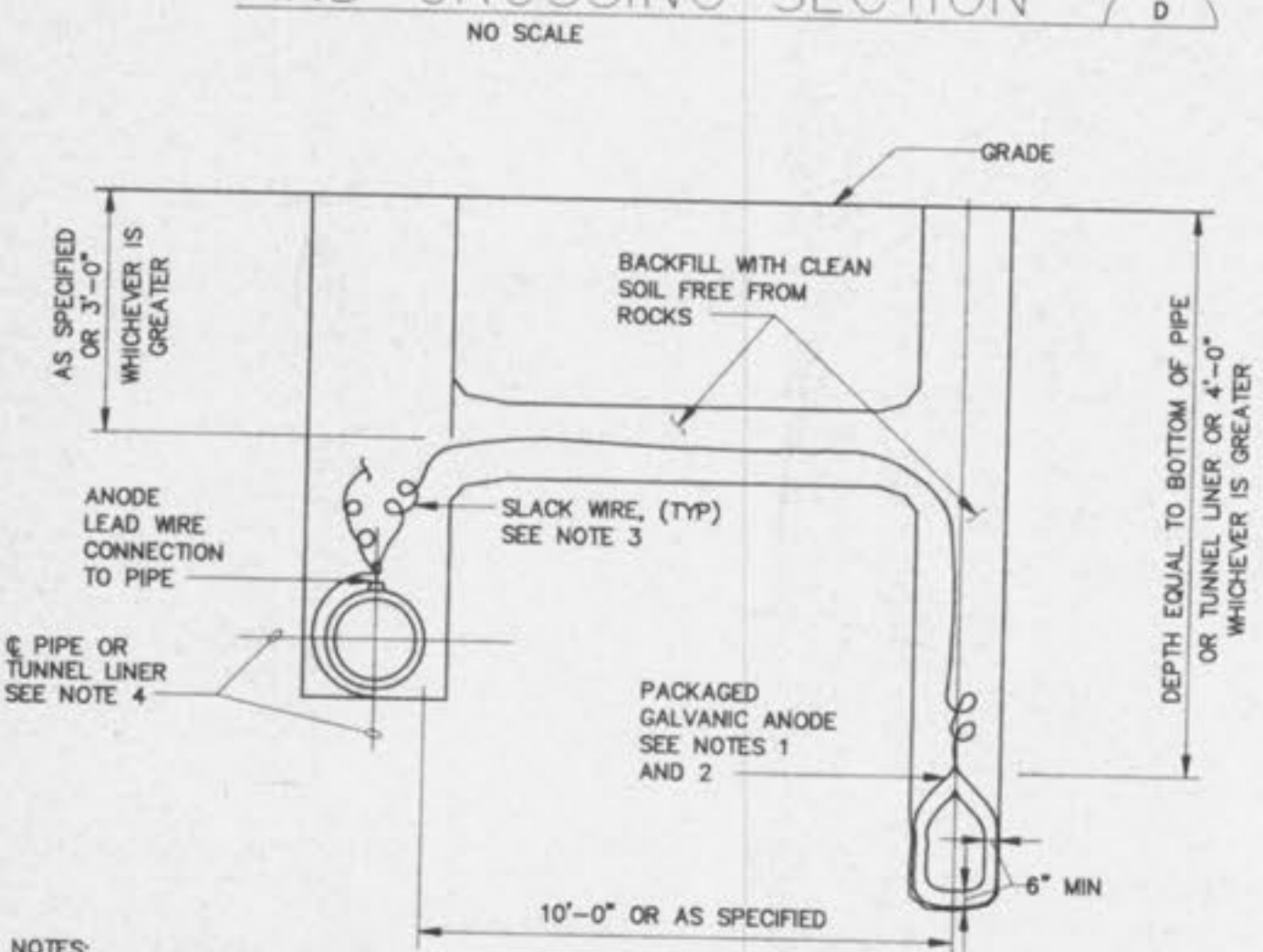
**STREET TRENCHING DETAIL AND CROSSING SECTION**  
NO SCALE



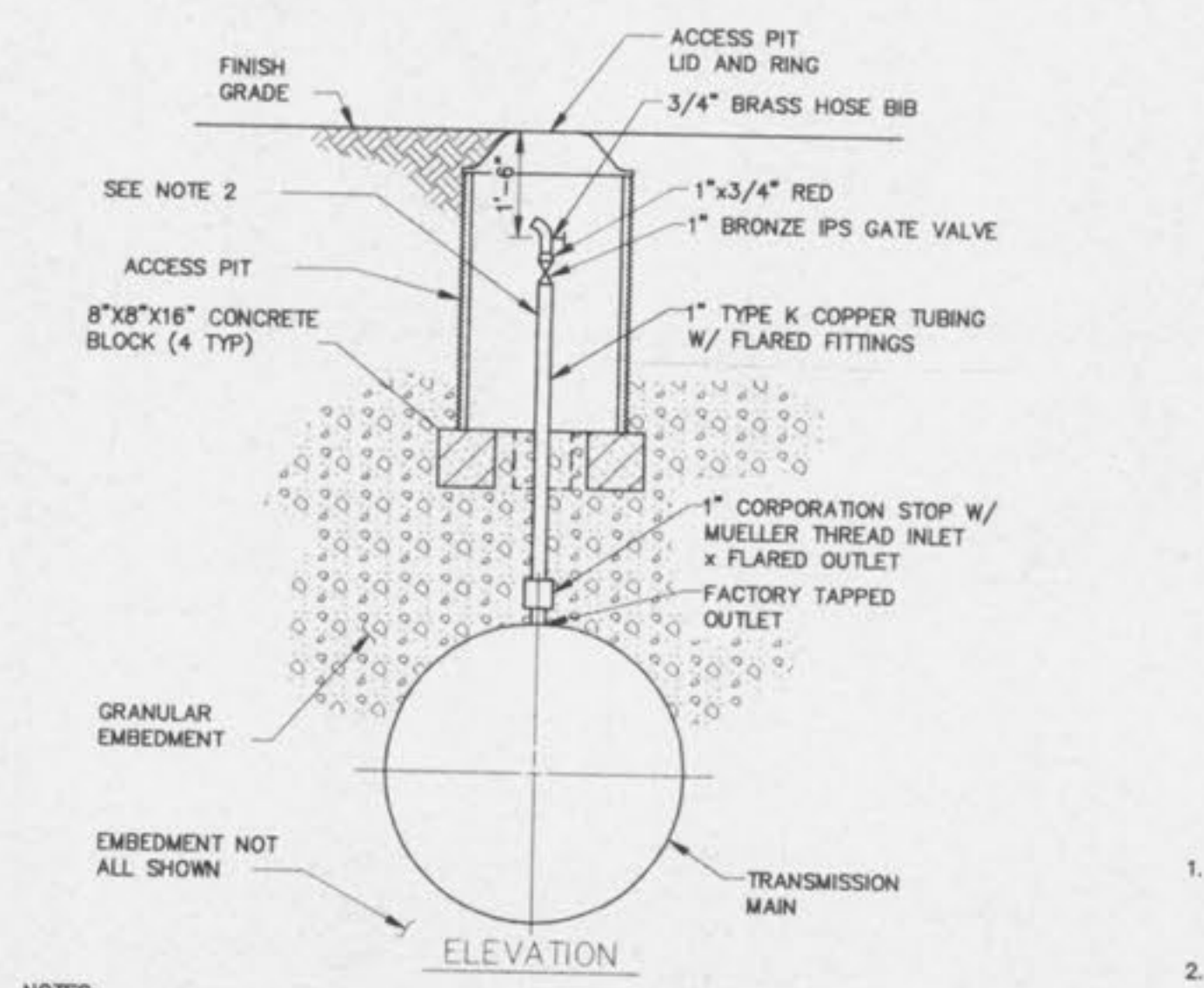
**JOINT BONDING OF STEEL PIPE ADAPTERS FOR PCOP ALTERNATIVE**  
NO SCALE



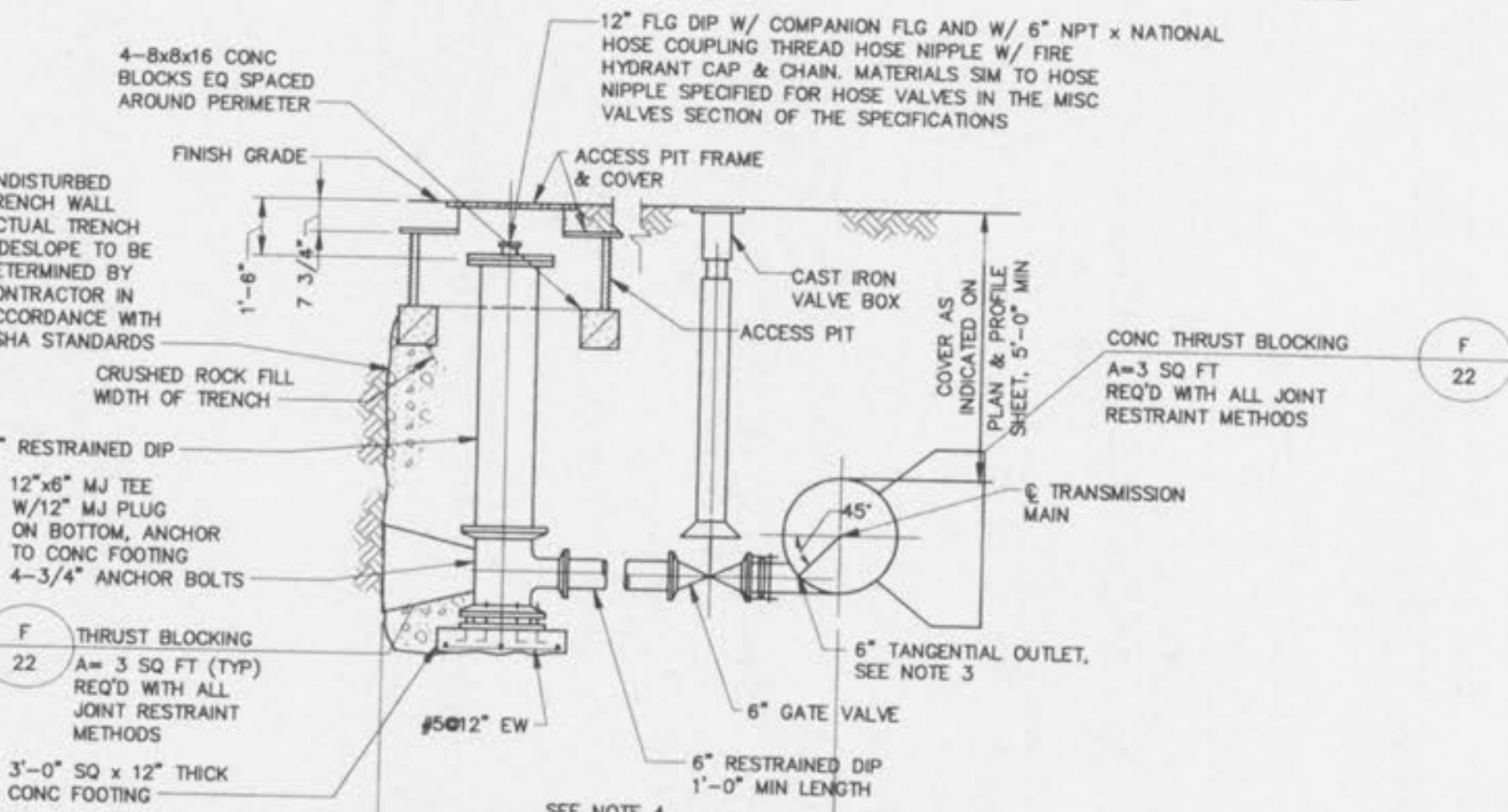
**CONCRETE ENCASUREMENT**  
NO SCALE



**ANODE INSTALLATION FOR STEEL PIPE ADAPTERS FOR PCOP ALTERNATIVE AND FOR TUNNEL LINERS**  
NO SCALE



**MANUAL AIR RELEASE VALVE ASSEMBLY**  
NO SCALE



**BLOWOFF FACILITY**  
NO SCALE

**PICKETT RAY & SILVER**  
CIVIL ENGINEERS  
PLANNERS  
LAND SURVEYORS  
333 Mid Rivers Mall Drive  
St. Peters, MO 63376  
Phone (636) 397-1211  
Fax (636) 387-1104

**WHITEGATE VILLAS**  
ADDITION  
CONSTRUCTION DETAILS  
Prepared For:  
**SUMMIT POINTE L.C.**  
239 FOX HILL ROAD  
ST. CHARLES, MO 63301  
636-940-9500

REVISIONS	NO.	DATE	BY	CHKD	APP'D
1	09-08-08	REV. PER CITY OF FALLON			
2	09-25-08	REV. PER CITY OF FALLON			

**ENGINEERS AUTHENTICATION**  
The responsibility for professional engineering liability on this project is hereby limited to the set of plans, specifications, and data hereunder attached. Responsibility is disclaimed for all other engineering plans involved in this project and specifically excludes revisions after this date unless reauthenticating.  
**PICKETT, RAY & SILVER, INC.**  
HAROLD J. BARTCH  
REGISTERED PROFESSIONAL ENGINEER  
NUMBER E17751

DRAWN	DATE
CML	06/20/02
CHECKED	DATE
X	X
PROJECT	SUPP. DIR
# 2	XXX
TASK	FIELD BOOK