

MECHANICAL SYMBOLS LIST

- Supply Air Diffuser
- Return Air or Exhaust Grille
- Spin in w/ Balance Damper
- Round Flex Duct
- Return Air Duct Up
- Return Air Duct Down
- Supply Air Duct Up
- Supply Air Duct Down
- Fire Damper
- Thermostat

General Notes

1. All ductwork to be installed per IMACS Standards.
2. Insulation to be installed per AHJAC Standards.
3. Coordinate ductwork installation with Elec. and Plumbing Contractors.
4. Mech. Contractor to extend duct out. air. from fans in suites.

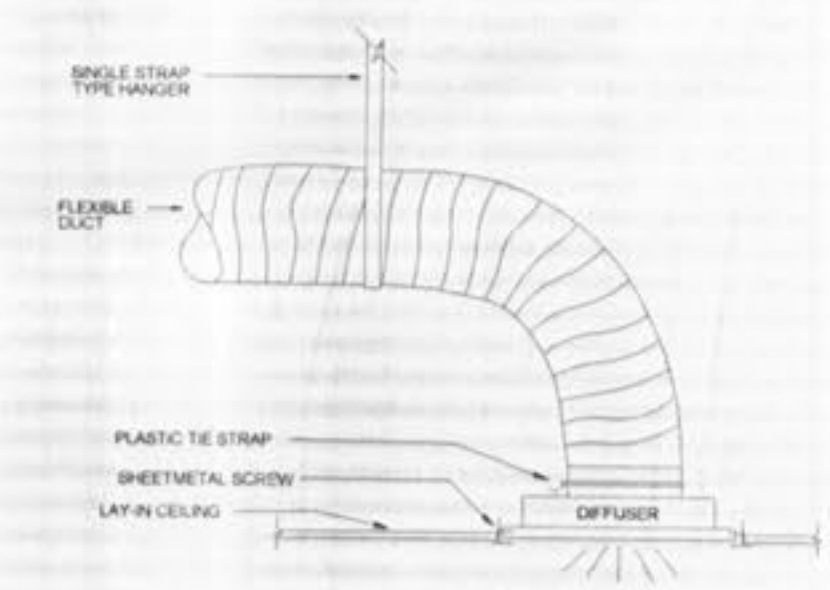
EXHAUST FAN SCHEDULE

MARK	MANUFACTURER	CAT. NO.	CFM	SP	VOLTAGE	REMARKS
EF	GREENHECK	SQ70-G	75	25	115/160	

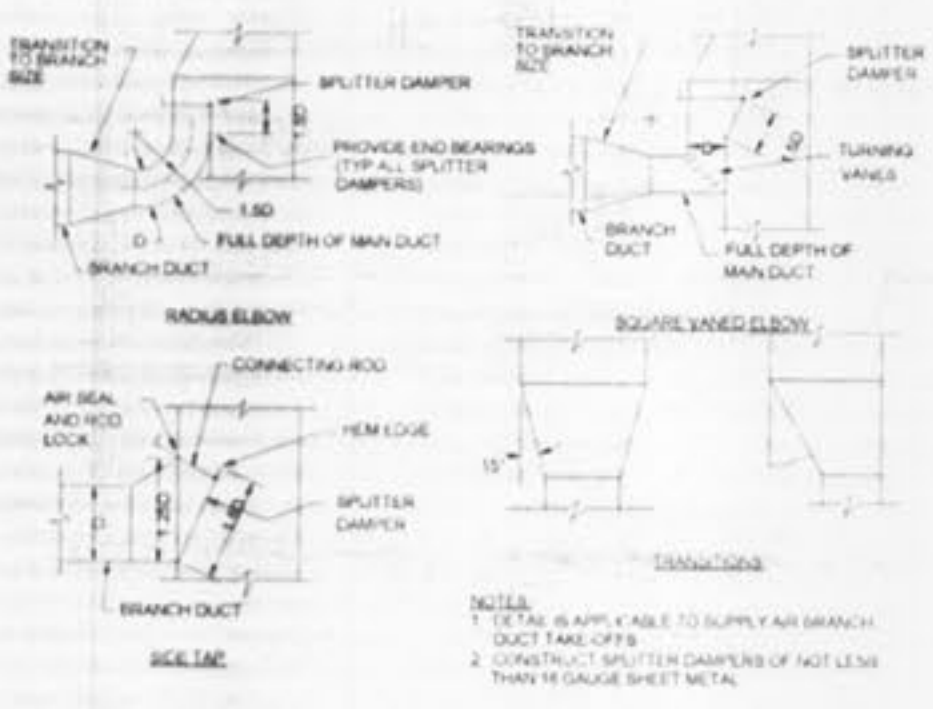
ROOF TOP UNIT SCHEDULE

Mark	Manufacturer	Catalog Number	CFM	BTUH Cooling	BTUH Heating	Voltage	Electrical Phase	Amps	Notes	Weight	CFM O.A.
RTU 1	Carrier	48HJE005-B5	1600	48,000	62,000	208	3	29.5	①	540	240

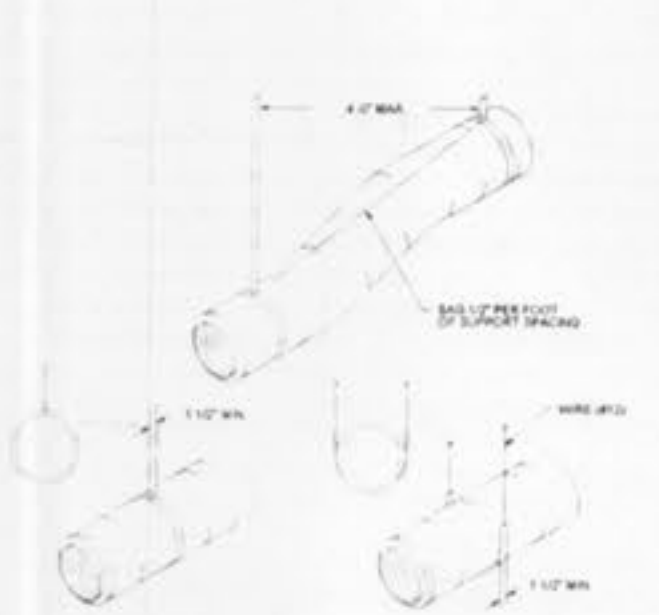
① 7 Day programmable digital thermostat equal to Honeywell T7300



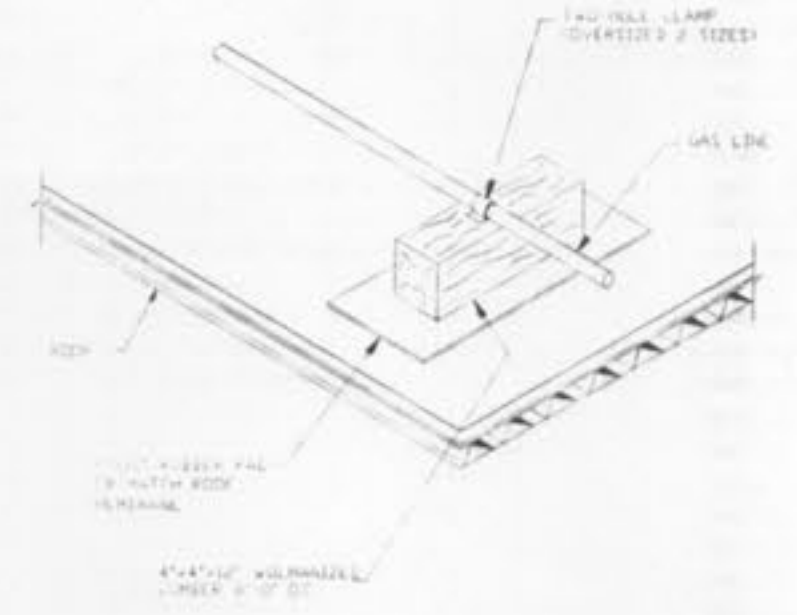
TYPICAL DIFFUSER CONNECTION
NO SCALE



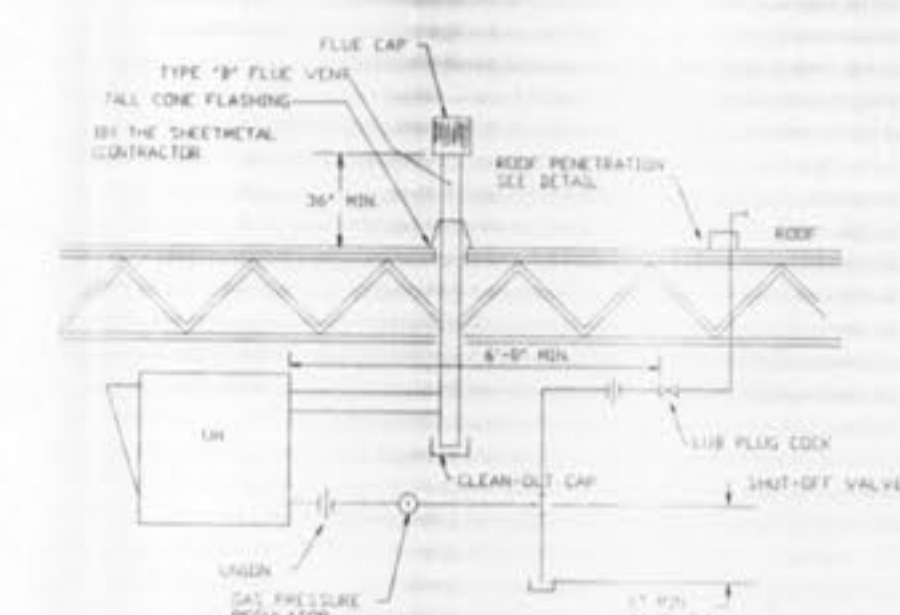
BRANCH DUCT TAKEOFFS AND TRANSITIONS
NO SCALE



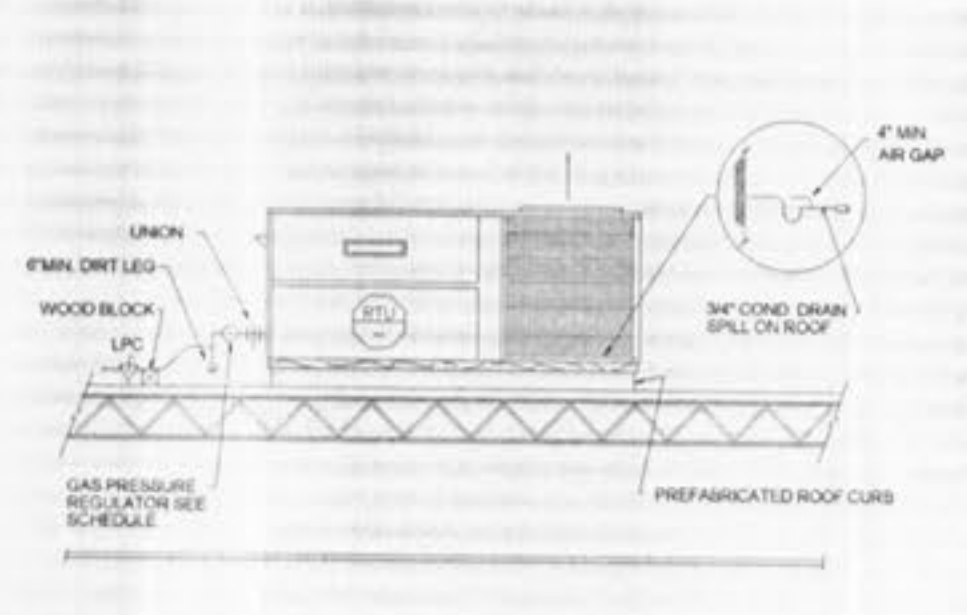
FLEXIBLE DUCT SUPPORT
NO SCALE



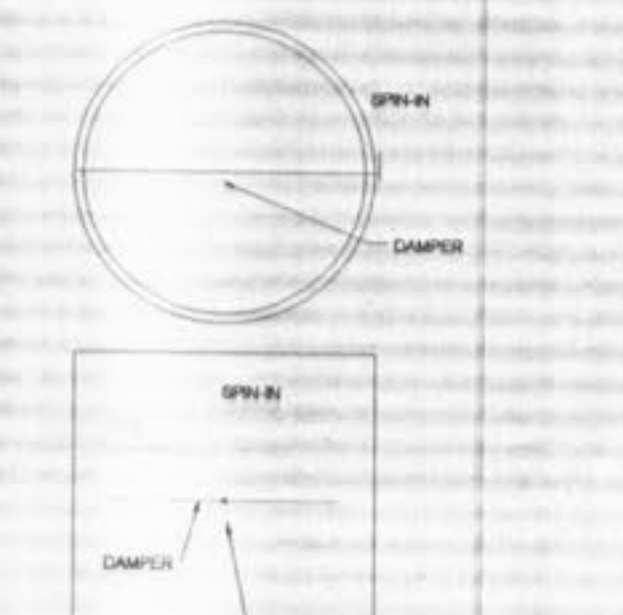
GAS PIPE SUPPORT DETAIL
NO SCALE



GAS UNIT HEATER DETAIL
NO SCALE



ROOFTOP UNIT GAS FIRED #2 PRESSURE
NO SCALE



SPIN IN W/ DAMPER
NO SCALE

Wm. Carron Design & Engineering, Inc.
 2012 St. Andrews Dr.
 St. Charles, MO 63301
 Phone: (636) 724-6670 Cell (314) 668-1070
 E-Mail: plumur@bcglobal.net



Wholesale Batteries
 Cool Springs Industrial Park
 St. Charles, Missouri

This drawing was prepared for use on a specific site, contemporaneously or at a later time. Use of this drawing for reference or otherwise on another project requires the services of a properly licensed Engineer. Reproduction of this drawing by anyone other than the Engineer of record requires written authorization. Failure to comply with this stipulation may be contrary to the law. County: St. Charles, Missouri. Date: 04/21/08.

DATE	REVISION

Issue Date	04/21/08
Job Number	08-003
Drawn By	W.J.C.
Checked By	K.J.K.
Drawing Title	Floor Plan

Drawing Number: **M1**