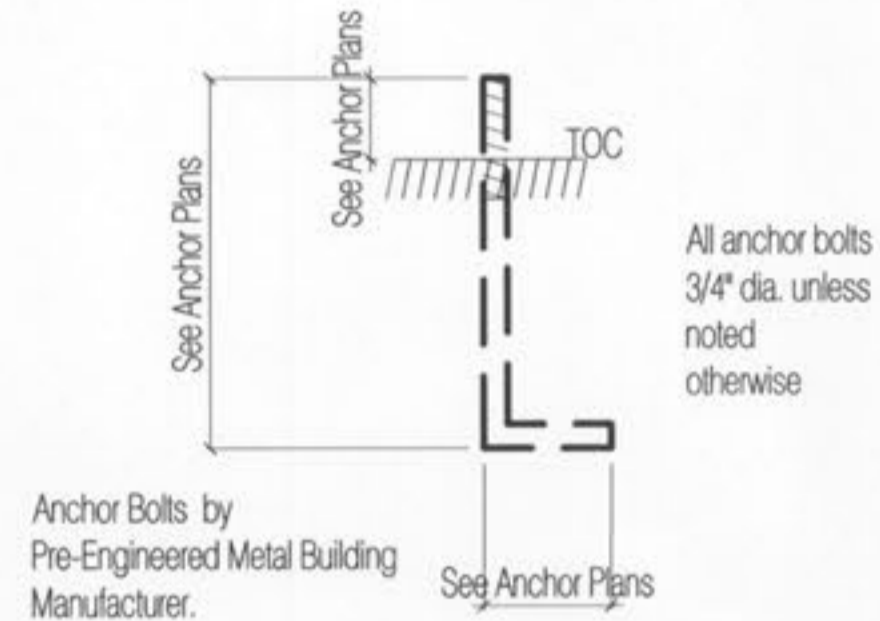


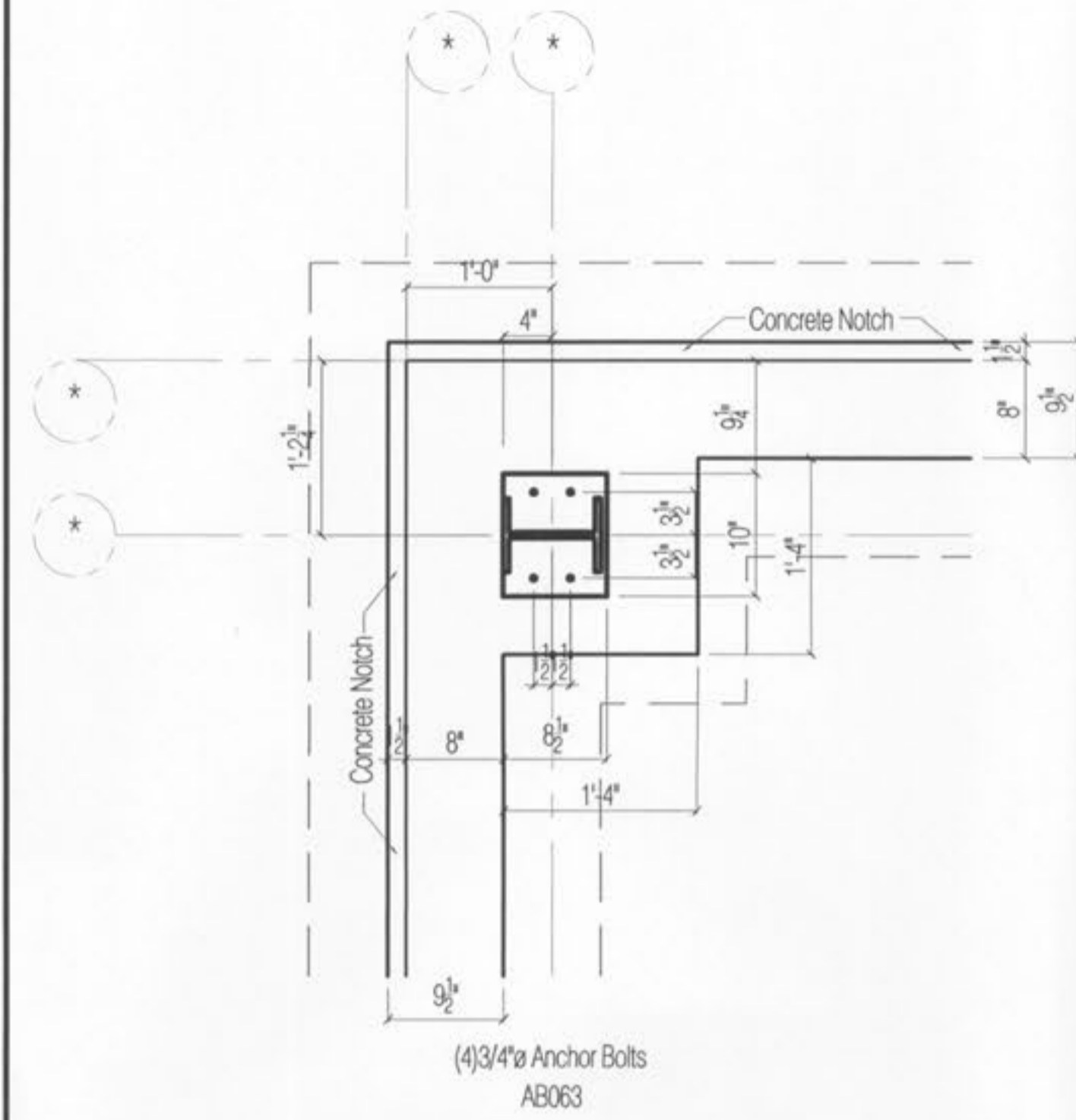
Provide Hairpin ties at all perimeter piers and where indicated or noted.

Provide thickened slab (min. 5" encasement) around hairpin rods.

TYPICAL HAIRPIN SCHEMATIC



TYPICAL ANCHOR BOLT DIAGRAM

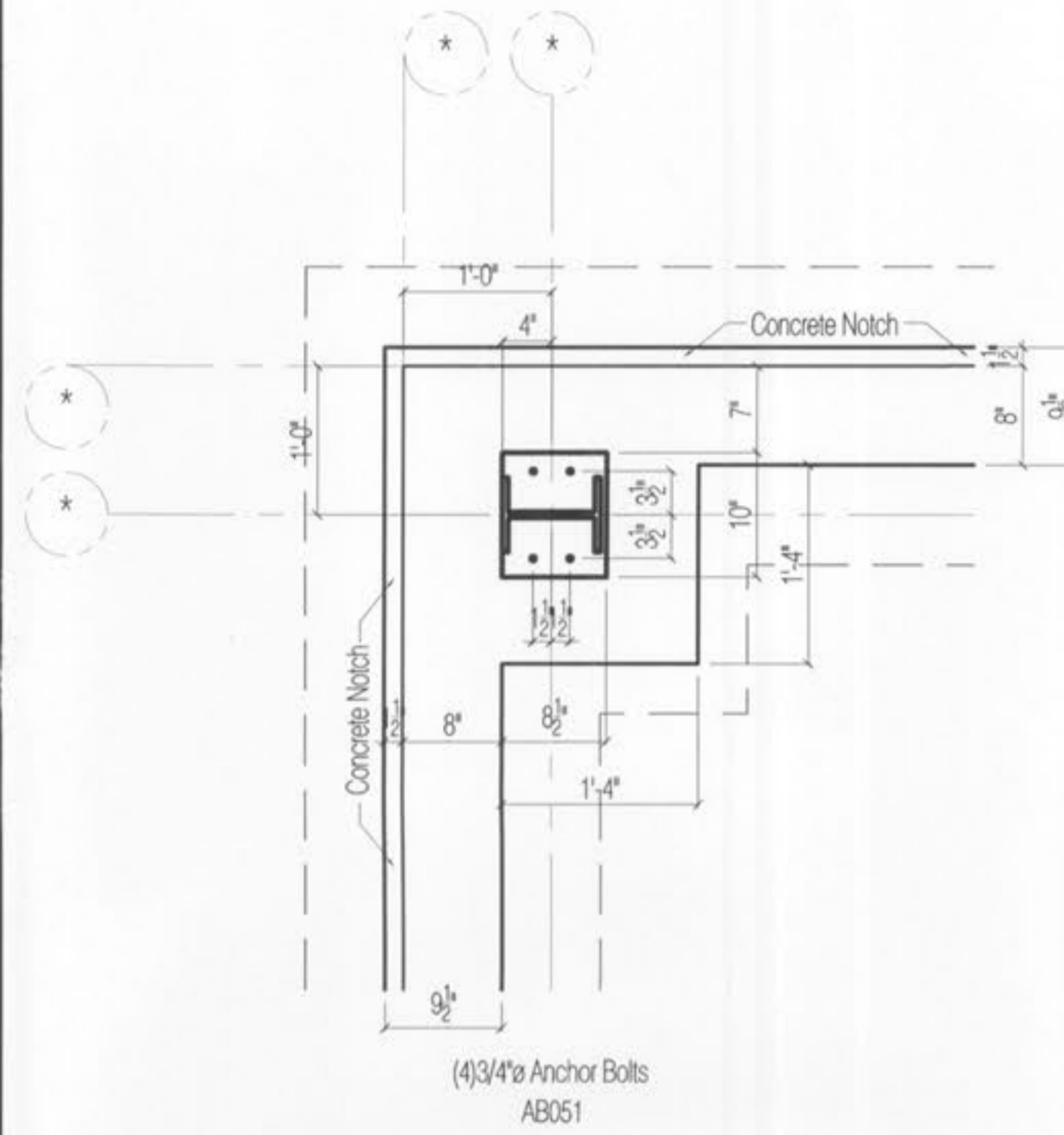


Piers- Size Indicated w/ (4) #5 Vertical bars, hooks into footing, tied with #3 stirrup ties at 10" OC.

Footing- 12" Thick by size indicated, w/(3) #5's Each Way at bottom

SCALE: 1" = 1'-0"

A

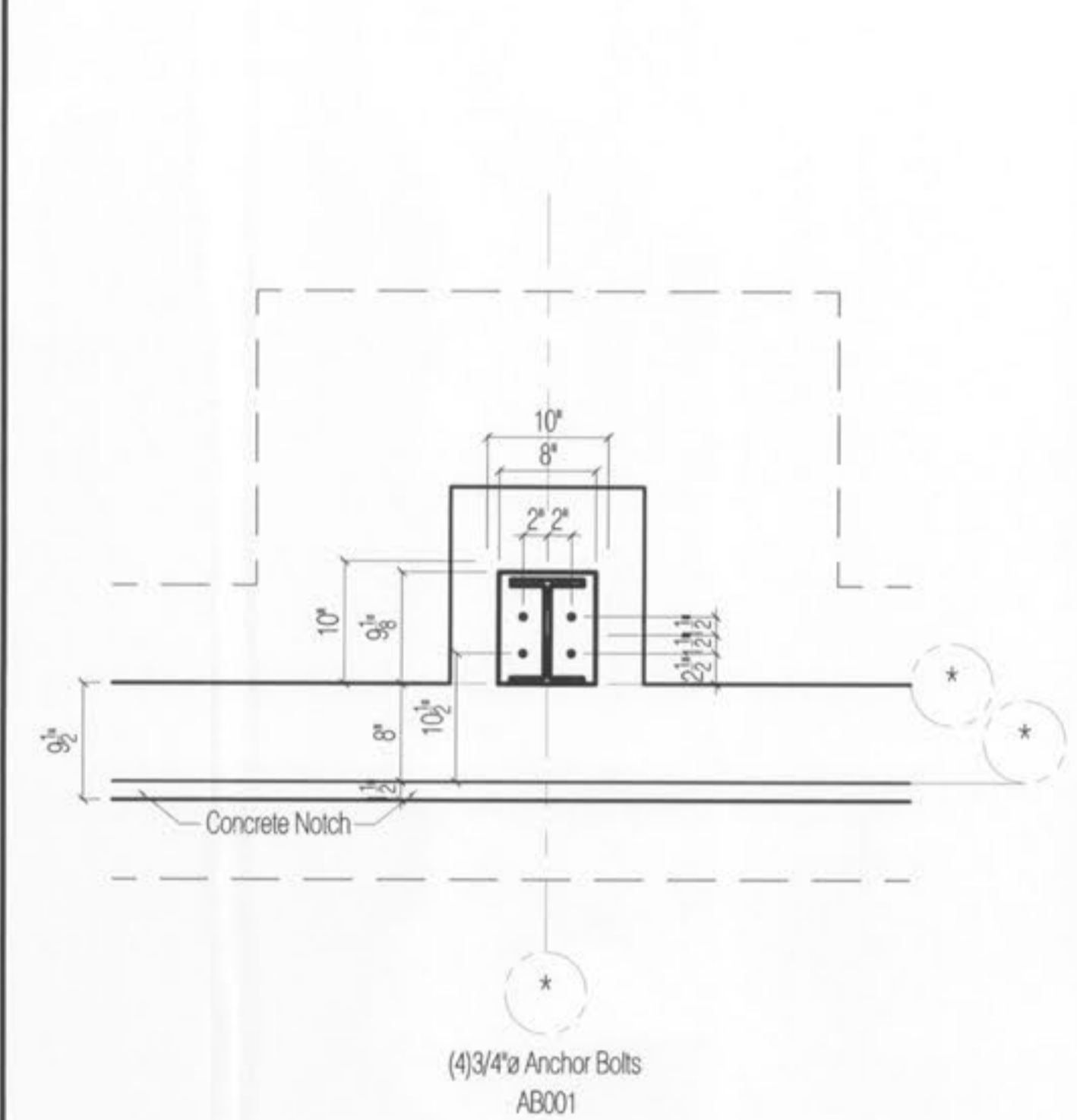


Piers- Size Indicated w/ (4) #5 Vertical bars, hooks into footing, tied with #3 stirrup ties at 10" OC.

Footing- 12" Thick by size indicated, w/(3) #5's Each Way at bottom

SCALE: 1" = 1'-0"

B

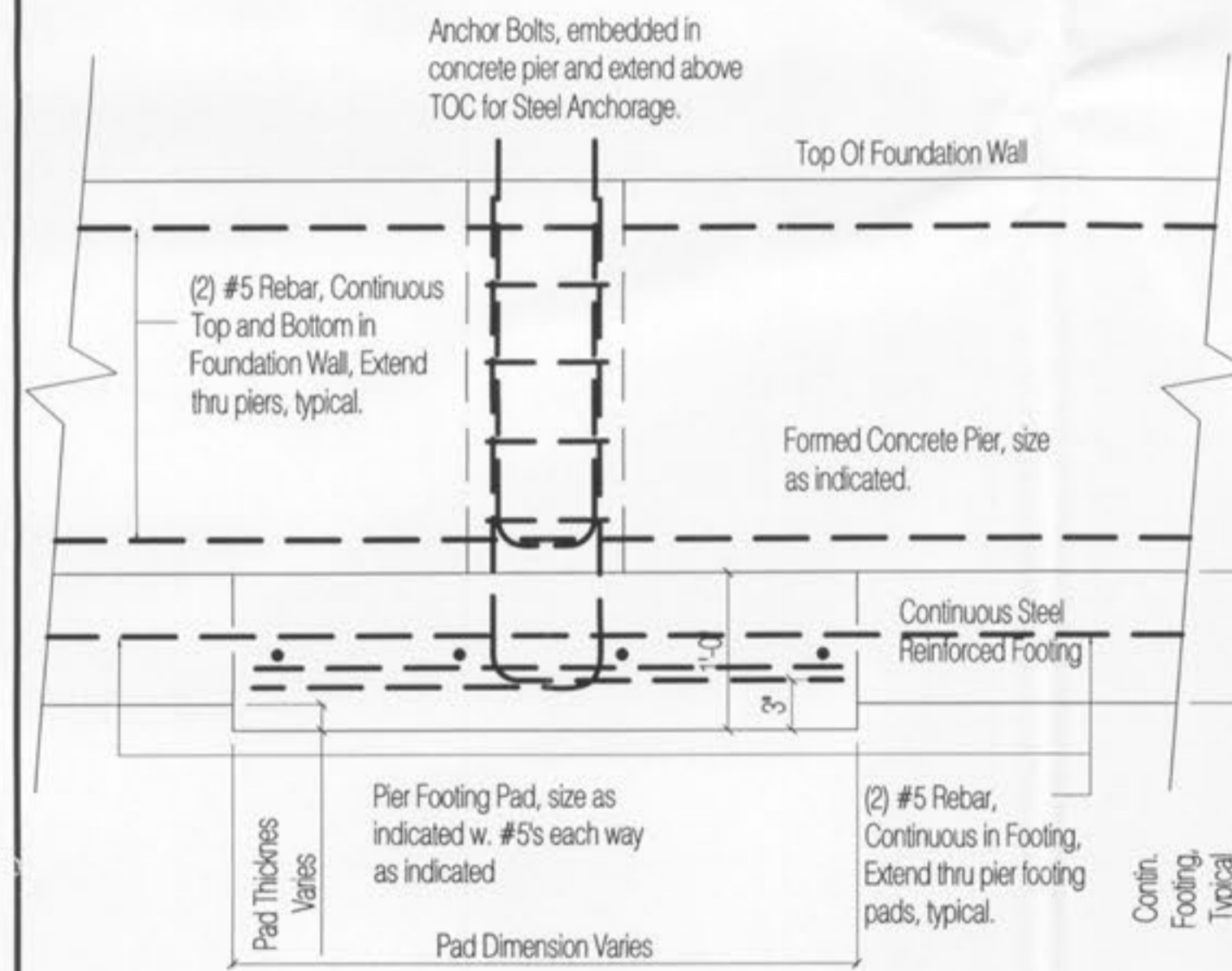


Piers- Size Indicated w/ (4) #5 Vertical bars, hooks into footing, tied with #3 stirrup ties at 10" OC.

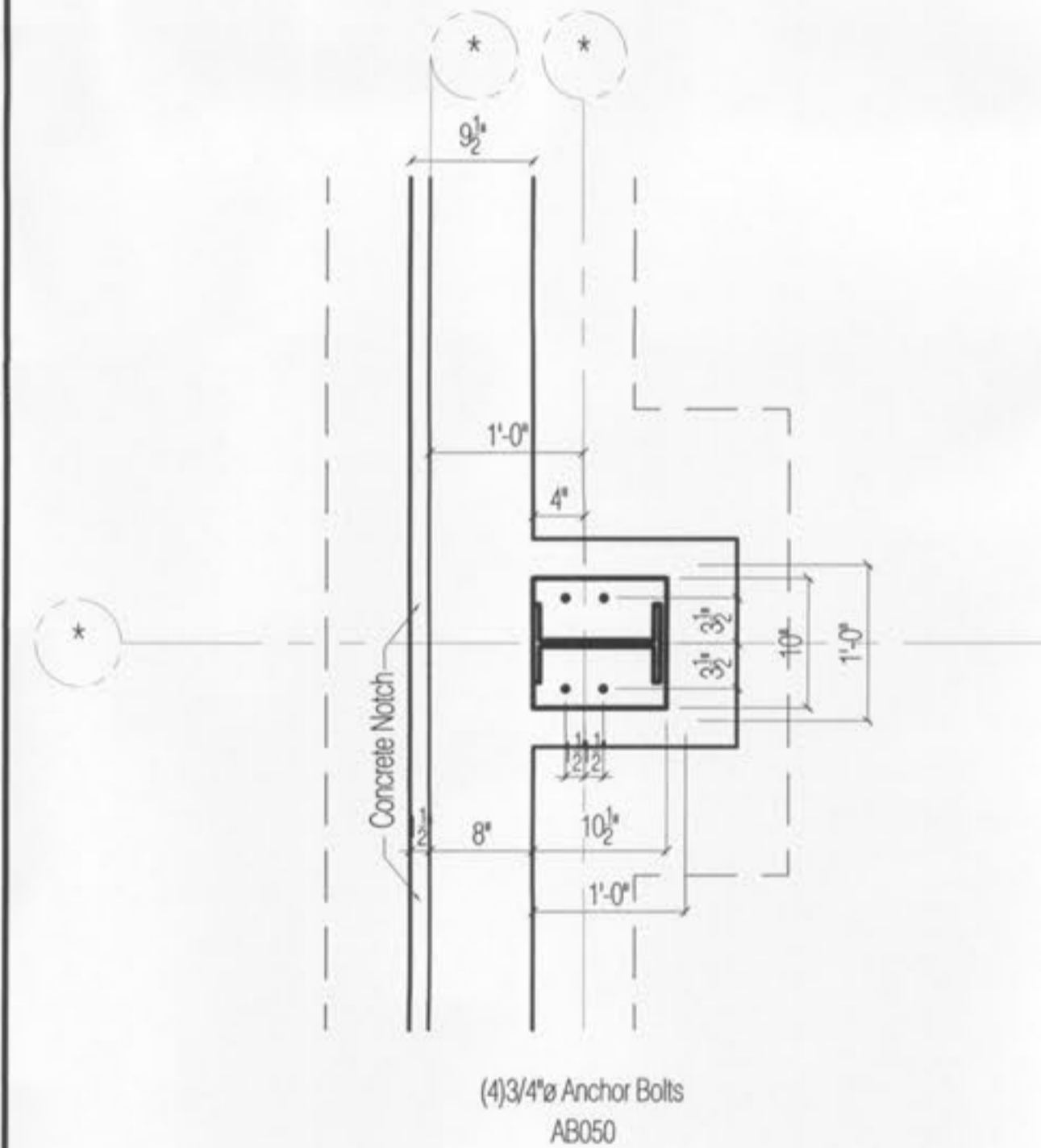
Footing- 12" Thick by size indicated, w/(4) #5's Each Way at bottom

SCALE: 1" = 1'-0"

C



Typical Transverse Section Detail at Pier

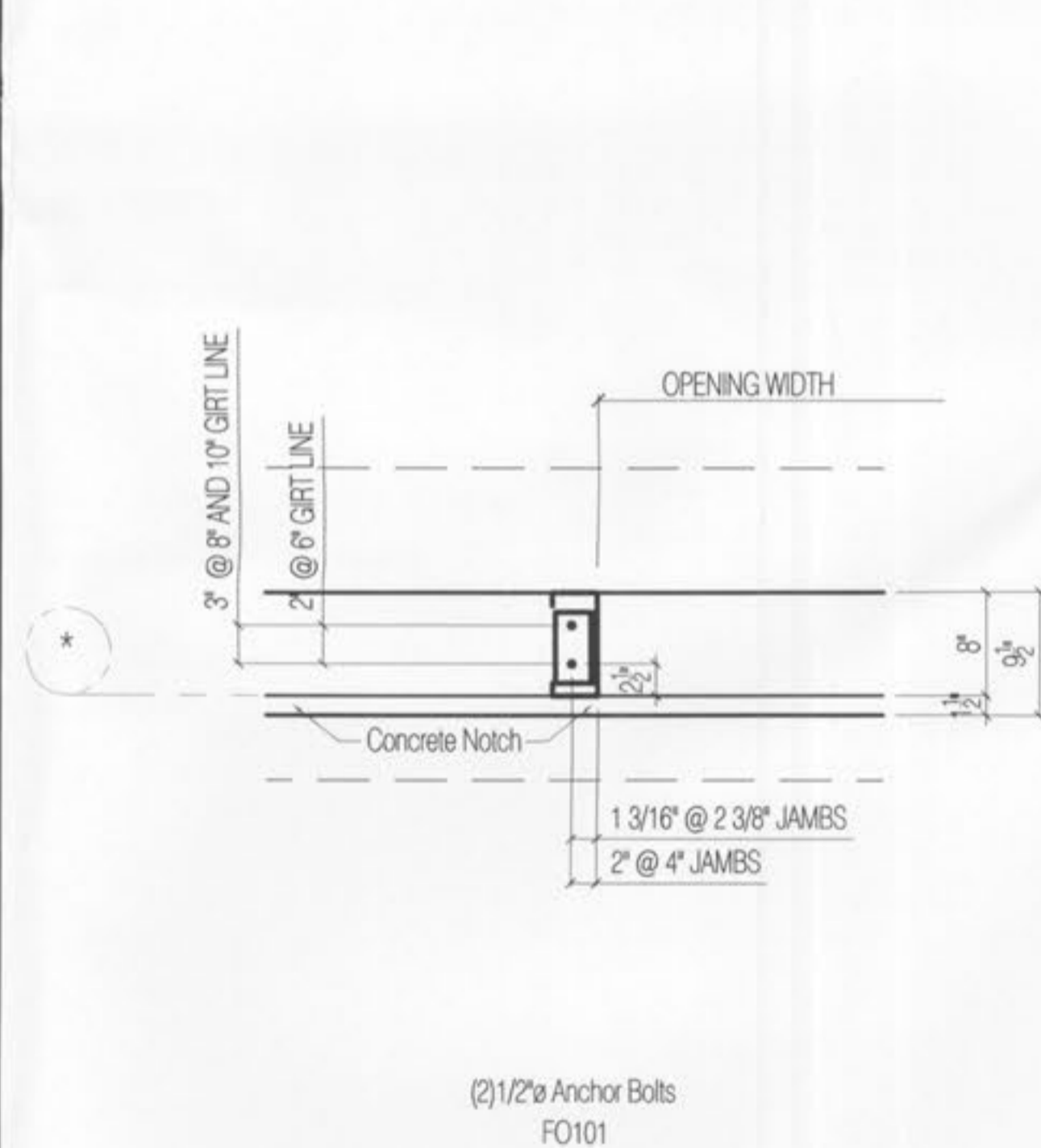


Piers- Size Indicated w/ (4) #5 Vertical bars, hooks into footing, tied with #3 stirrup ties at 10" OC.

Footing- 12" Thick by size indicated, w/(3) #5's Each Way at bottom

SCALE: 1" = 1'-0"

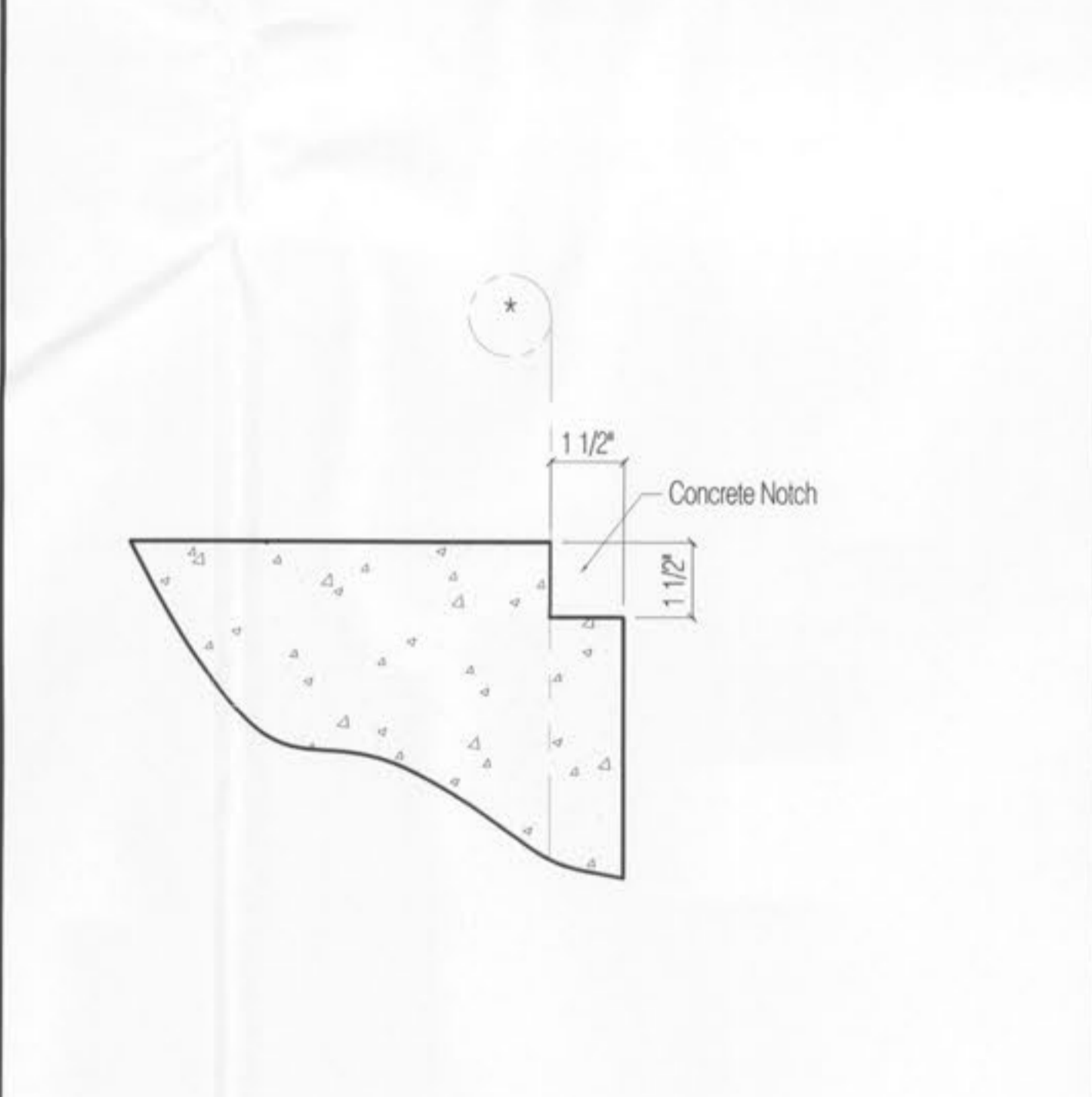
D



2 3/8" Jambes are to be used for standard doors, and 4" Jambes are to be used with heavy duty O.H. doors

SCALE: 1" = 1'-0"

E



Sheeting Notch In Concrete

N.T.S.

F

Typical Foundation / Frost Wall Notes

Foundation Wall- Thickness indicated w/ (2) #5 Horizontal Continuous bars top and bottom, and #5 bars vertical with 6" Hook, and 6" min. embed @ 48" O.C. extend through piers, typical

Frost Wall Footing- 24" x 8" continuous, w/ (2) #5's continuous, extend through pier footings, typical.

GENERAL NOTES:

INDICATES EDGE OF STEEL



*[Signature]*  
 4/25/08  
 WIEDEMEIER ARCHITECTS, INC.  
 A-5058

ISSUE DATE:  
 04/21/08

PROJECT NUMBER:  
 WAI-0763

**A2.1**