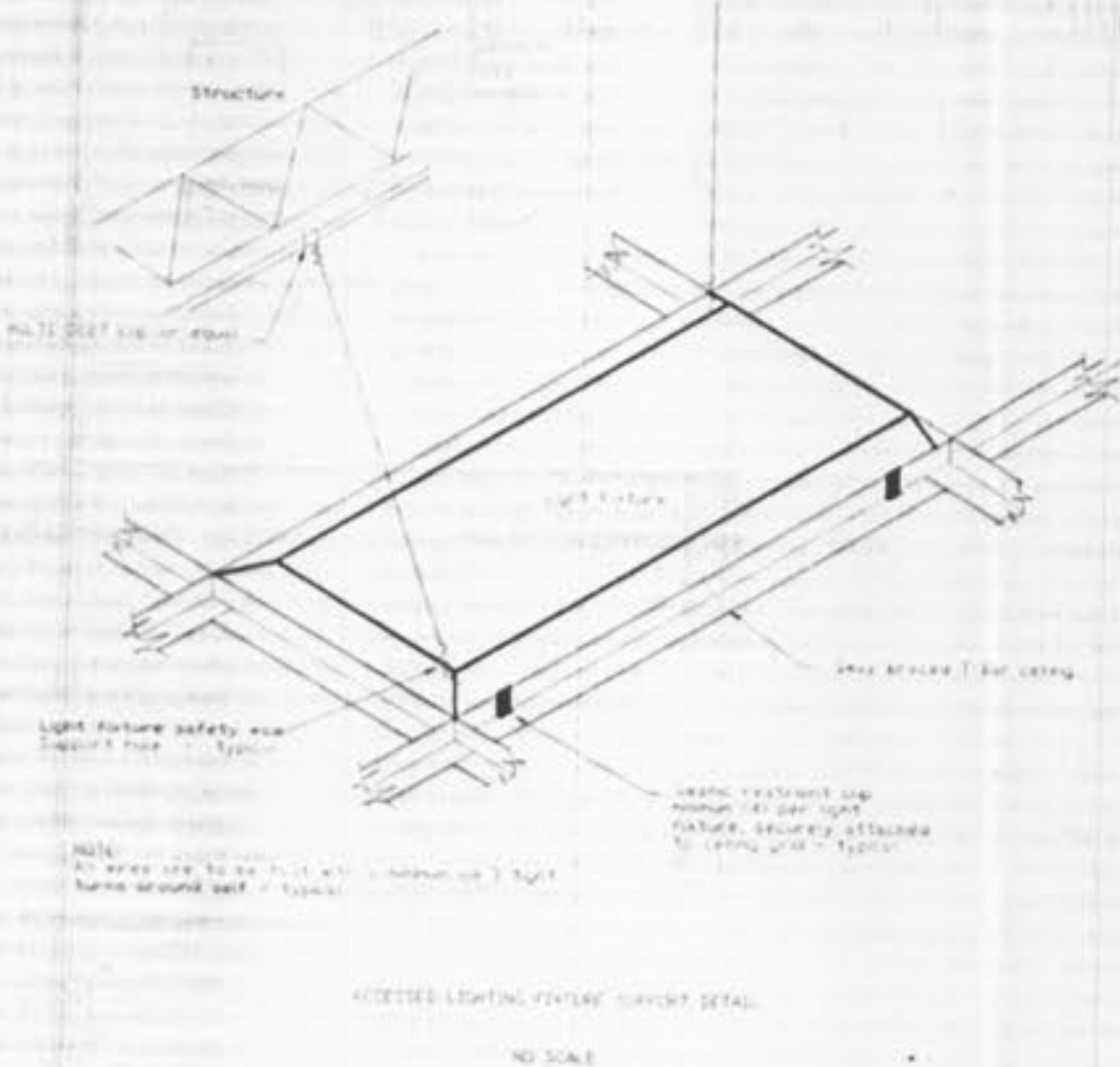




- Symbols List**
- Fluorescent strip fixture
 - Round recessed fixture
 - Square recessed fixture
 - Incandescent fixture outlet
 - Combo exit / emergency fixture
 - 2 head emergency fixture
 - Wall pack
 - Future Designation
 - Switch leg designation
 - Circuit designation
 - Grounded duplex receptacle
 - Dedicated receptacle
 - Isolated ground receptacle
 - Ground fault interrupter receptacle
 - Weatherproof receptacle
 - Double duplex receptacle
 - Special receptacle
 - Simplex receptacle
 - Clock outlet
 - Floor outlet
 - Single pole toggle switch
 - Three way switch
 - Four way switch
 - Switch w/ pilot light
 - Dimmer switch
 - Keyed switch
 - Manual motor starter
 - Lighting panel 208V or 240V
 - Switchboard or distribution panel
 - Safety switch (non fused)
 - Safety switch (fused)
 - Magnetic motor starter
 - Combination starter / disconnect
 - 1 phase motor
 - 3 phase motor 208 or 240V
 - 3 phase motor 480V
 - Start / stop station
 - Telephone outlet
 - Tele / Data outlet
 - Wall phone outlet
 - Fire alarm annunciator
 - Manual pull station
 - Fire alarm horn
 - Fire alarm audio visual
 - Fire bell
 - Strobe
 - Door holder
 - Duct detector
 - Control module
 - Monitor module
 - Smoke detector
 - Stand alone 120V smoke detector
 - Heat detector
 - Flow switch
 - Tamper switch
 - Thermostat
 - Buzzer
 - Pushbutton
 - Panel designation
 - Circuit designation
 - No. of wires
 - Wire size other than #12

General Notes:

- Branch circuit no's are to indicate switching and circuit control groupings only. Final circuit no's are to be field determined.
- Verify exact type, location and electrical requirements of equipment furnished by others prior to ruff-in.
- Unless noted otherwise, all branch circuiting on this sheet is fed from panel LP-A.



LIGHT FIXTURE SCHEDULE

Type	Manufacturer	Catalog Number	Lamp			Mounting	Remarks
			Qty	Type	Watt		
A	Lithonia	2GT332A12-120-ESLP	3	T8	32	Layin	2X4 4L Floor Layin
B	Lithonia	TE 400M E17 W TB	1	MH	400	PENDANT	HID HI Bay
SA	Lithonia	KAD 400M SR4SCTBSPD04 LP1 w/ SSS 2S 4C					25' Pole
X	Lithonia	LHQM SW3R-120/277				Surface	Lamps w/ fixture

* All HID fixtures to be multi tap.

Wm. Carron Design & Engineering, Inc.
 2012 St. Andrews Dr.
 St. Charles, MO 63301
 Phone: (636) 724-6670 Cell (314) 668-1070
 E-Mail: plumur@bcglobal.net



Wholesale Batteries
 Cool Springs Industrial Park
 St. Charles, Missouri

Revisions for errors or alterations:
 This drawing was prepared for use on a specific job, construction only. It is not to be used for any other project or as a basis for any other project. Use of this drawing for any other project requires the services of a properly licensed Engineer. Reproductions of this drawing by anyone other than the person or firm to whom it was authorized. Failure to comply with this stipulation may be contrary to the law.
 County: St. Charles County
 State: Missouri

DATE	REVISION

Issue Date: 04/21/08
 Job Number: 08-003
 Drawn By: W.J.C.
 Checked By: K.J.K.
 Drawing Title: Floor Plan

Drawing Number: **E1**