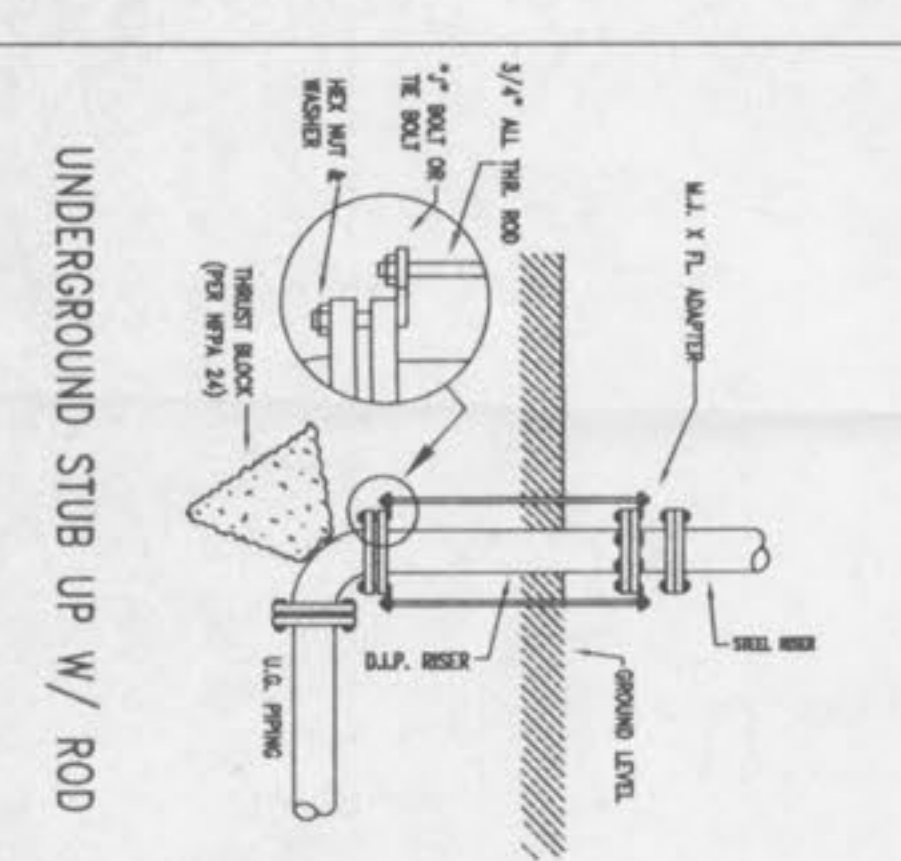
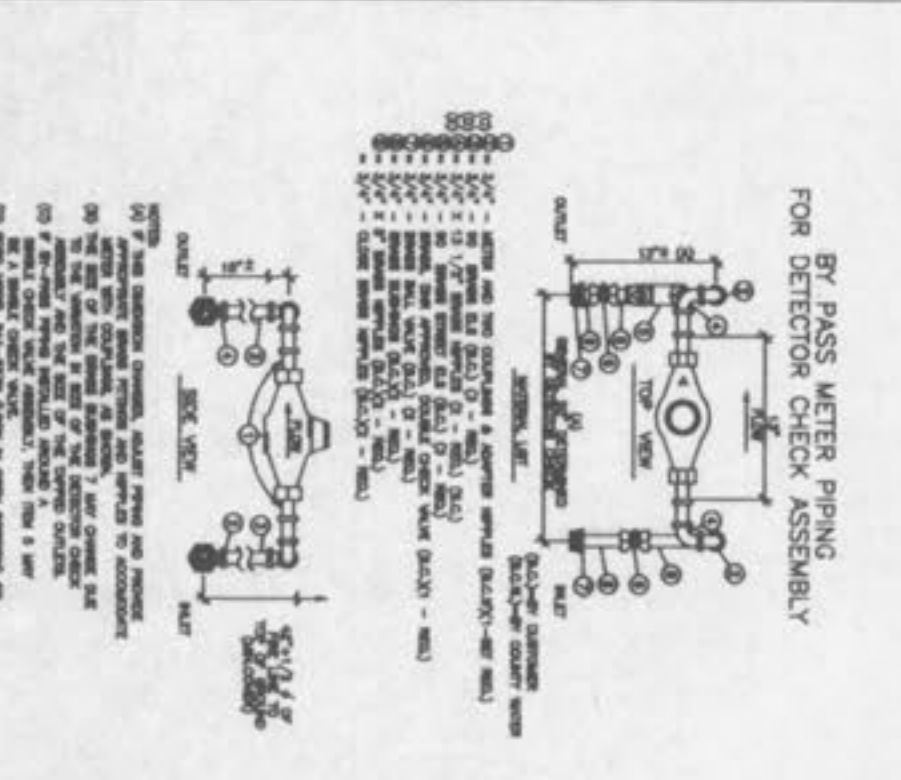
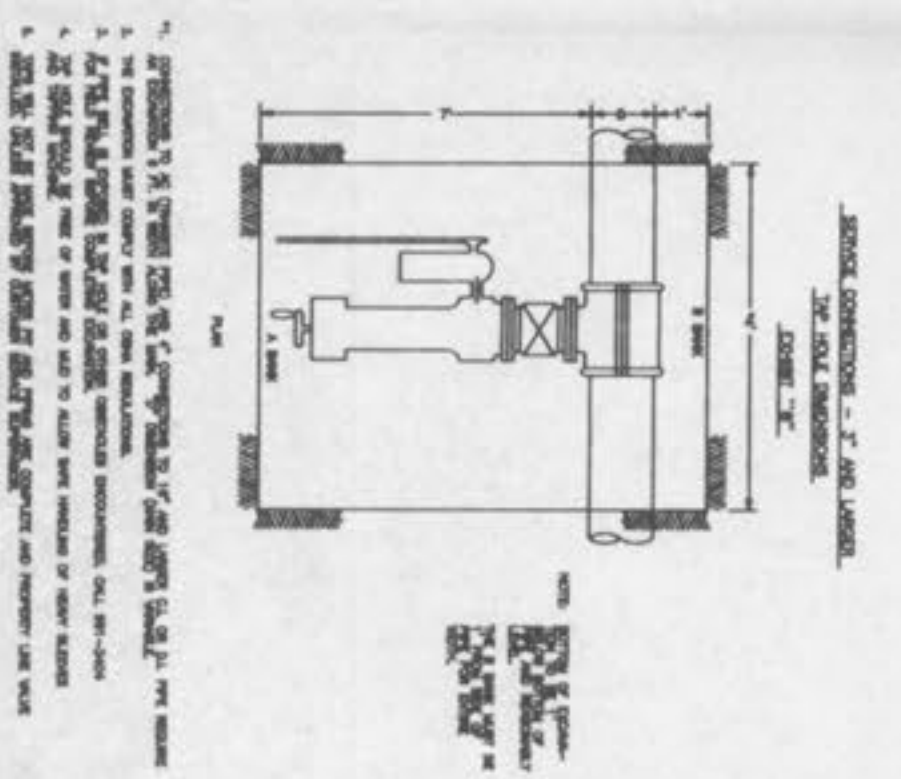
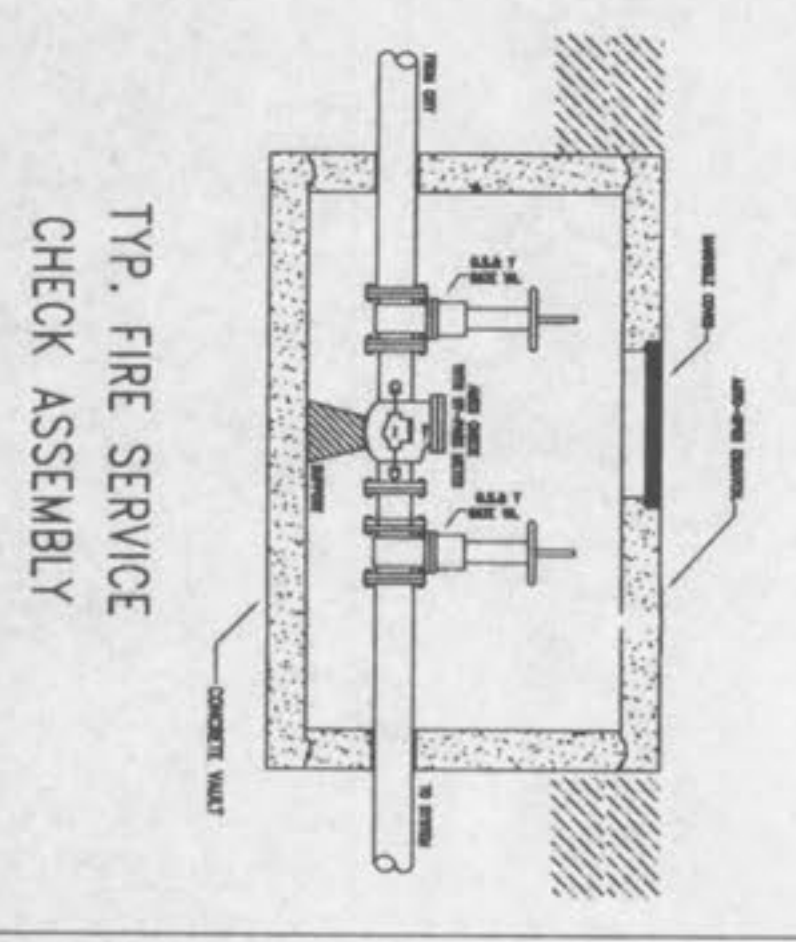
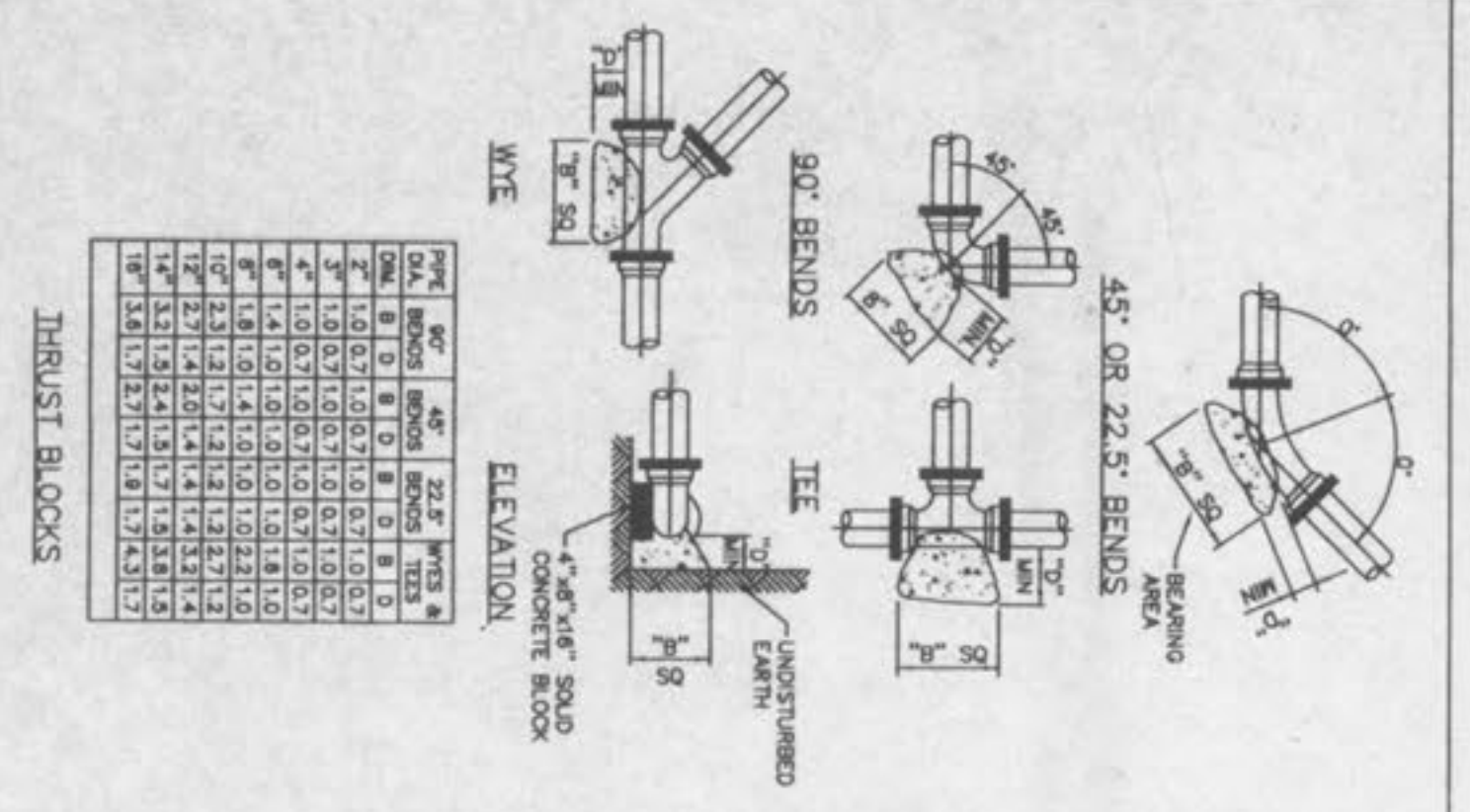


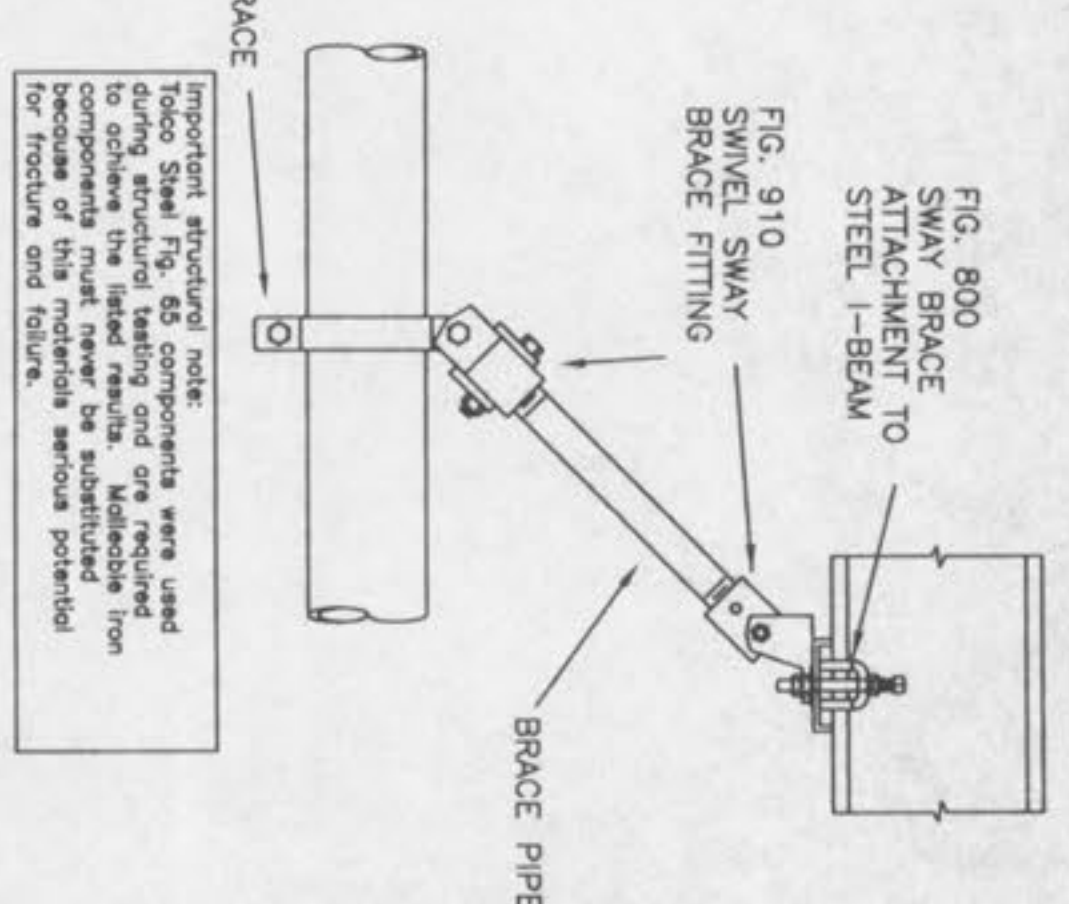
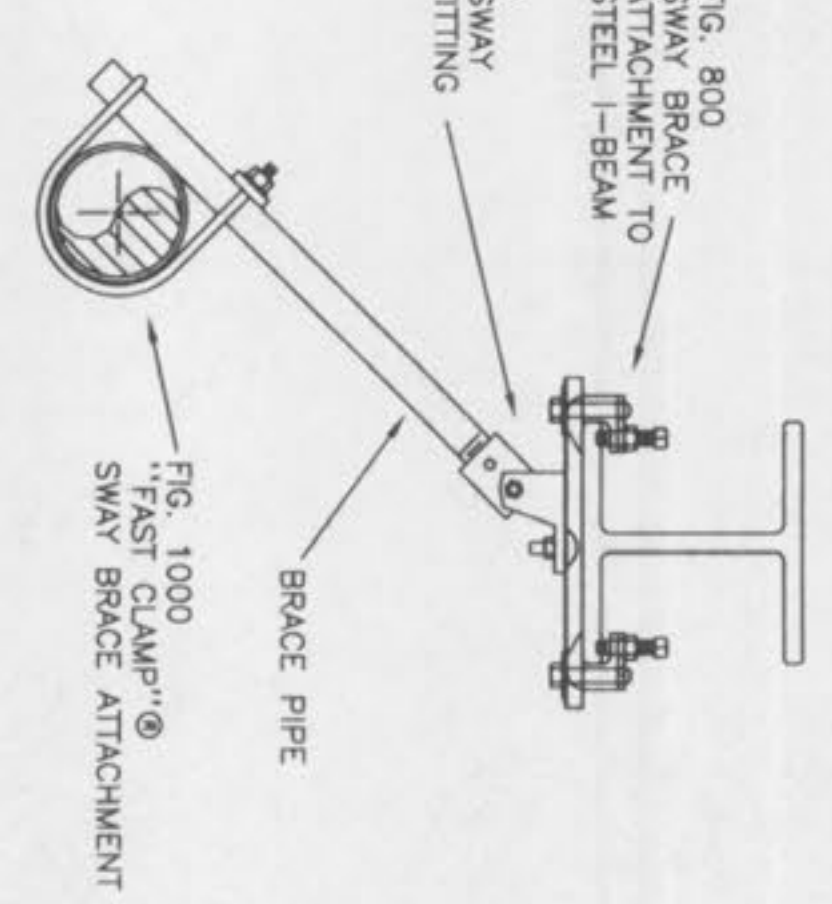
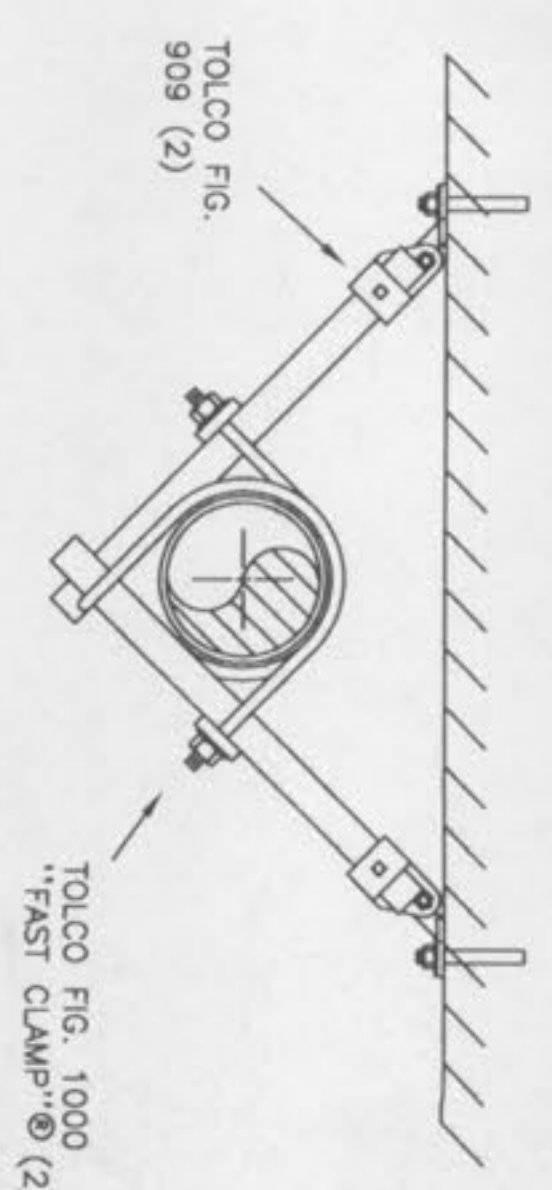
SITE PLAN FIRE SPRINKLER
SCALE 1" = 30'



FLOW TEST HYDRANT 'B'
1347 GPM FLOWING

FLOW TEST HYDRANT 'A'
STATIC PRESSURE - 13 PSI
RESIDUAL PRESSURE - 65 PSI

UNDERGROUND NOTES:
ALL WORK IS TO BE IN ACCORDANCE WITH NFPA 74 & CITY OF OFALLON
PIPING TO BE 6" CLASS B IRON & VALVE & WITHIN 6" OF FOUNDATION
ALL FITTINGS ARE TO BE MECHANICAL JOINT TYPE UNLESS NOTED
PROVIDE SURGE RESTRAINT THRUST BLOCKS & RODDING PER NFPA 74
ALL PIPING WILL HAVE A MINIMUM BURIED OF 50" BELOW FINISHED GRADE
FIRE SERVICE MAIN SHALL BE COMPLETELY FLUSHED BEFORE CONNECTION
IS MADE TO INSIDE SPRINKLER PIPING
ALL PIPING SHALL BE HYDROSTATICALLY TESTED @ 200 PSI FOR 2 HOURS.



ROY BERGER P.E.
1003 Allen Avenue
St. Louis, Mo 63104
Date 2/5/91

REVISIONS	DATE	BY	DESCRIPTION
1	02/05/91	RB	ISSUED FOR PERMITS
2	02/05/91	RB	REVISED PER COMMENTS
3	02/05/91	RB	REVISED PER COMMENTS
4	02/05/91	RB	REVISED PER COMMENTS
5	02/05/91	RB	REVISED PER COMMENTS
6	02/05/91	RB	REVISED PER COMMENTS
7	02/05/91	RB	REVISED PER COMMENTS
8	02/05/91	RB	REVISED PER COMMENTS
9	02/05/91	RB	REVISED PER COMMENTS
10	02/05/91	RB	REVISED PER COMMENTS
11	02/05/91	RB	REVISED PER COMMENTS
12	02/05/91	RB	REVISED PER COMMENTS
13	02/05/91	RB	REVISED PER COMMENTS
14	02/05/91	RB	REVISED PER COMMENTS
15	02/05/91	RB	REVISED PER COMMENTS
16	02/05/91	RB	REVISED PER COMMENTS
17	02/05/91	RB	REVISED PER COMMENTS
18	02/05/91	RB	REVISED PER COMMENTS
19	02/05/91	RB	REVISED PER COMMENTS
20	02/05/91	RB	REVISED PER COMMENTS
21	02/05/91	RB	REVISED PER COMMENTS
22	02/05/91	RB	REVISED PER COMMENTS
23	02/05/91	RB	REVISED PER COMMENTS
24	02/05/91	RB	REVISED PER COMMENTS
25	02/05/91	RB	REVISED PER COMMENTS
26	02/05/91	RB	REVISED PER COMMENTS
27	02/05/91	RB	REVISED PER COMMENTS
28	02/05/91	RB	REVISED PER COMMENTS
29	02/05/91	RB	REVISED PER COMMENTS
30	02/05/91	RB	REVISED PER COMMENTS

Accurate Fire Protection Systems, LLC.
1330 TIMBERLINE DR., PACIFIC, MO.
PHONE: (636) 271-3473 FAX: (636) 271-6366

WILLERDING WELDING
NORTH I-70 SERVICE ROAD
OFALLON, MISSOURI 63366

SITE PLAN

Scale: 1" = 30'
Date: 2/5/91
Sheet: 1 of 2