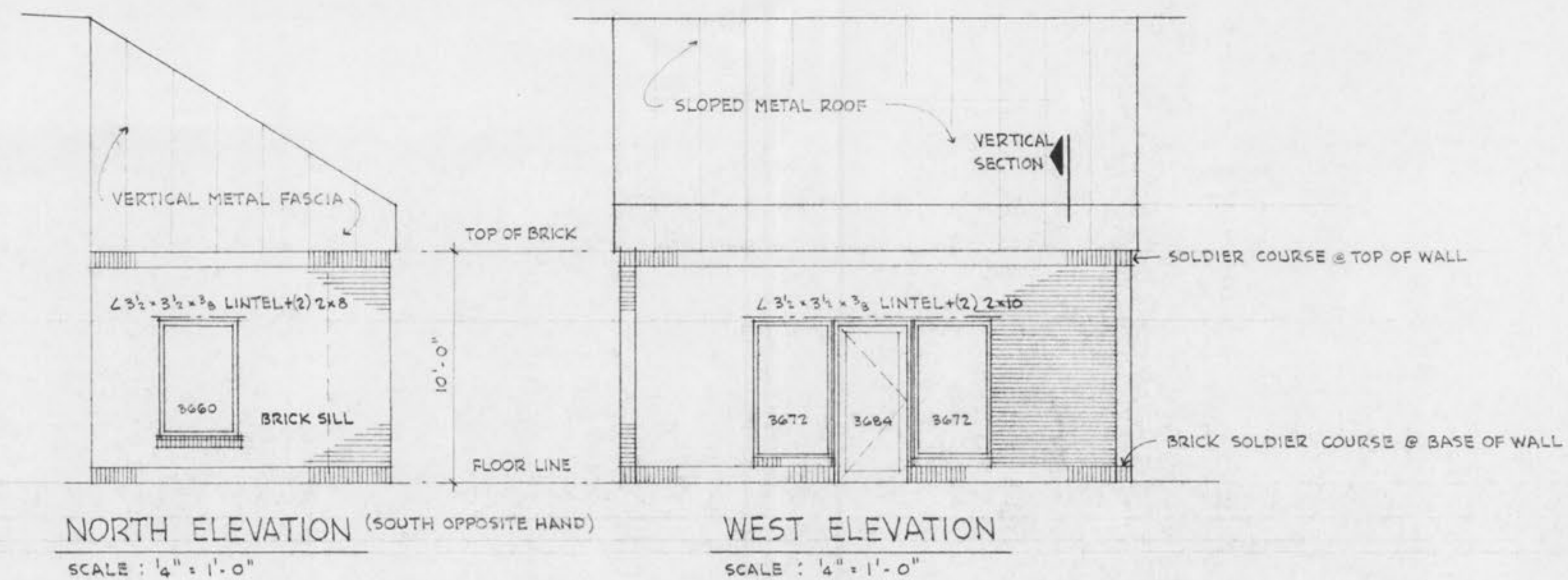
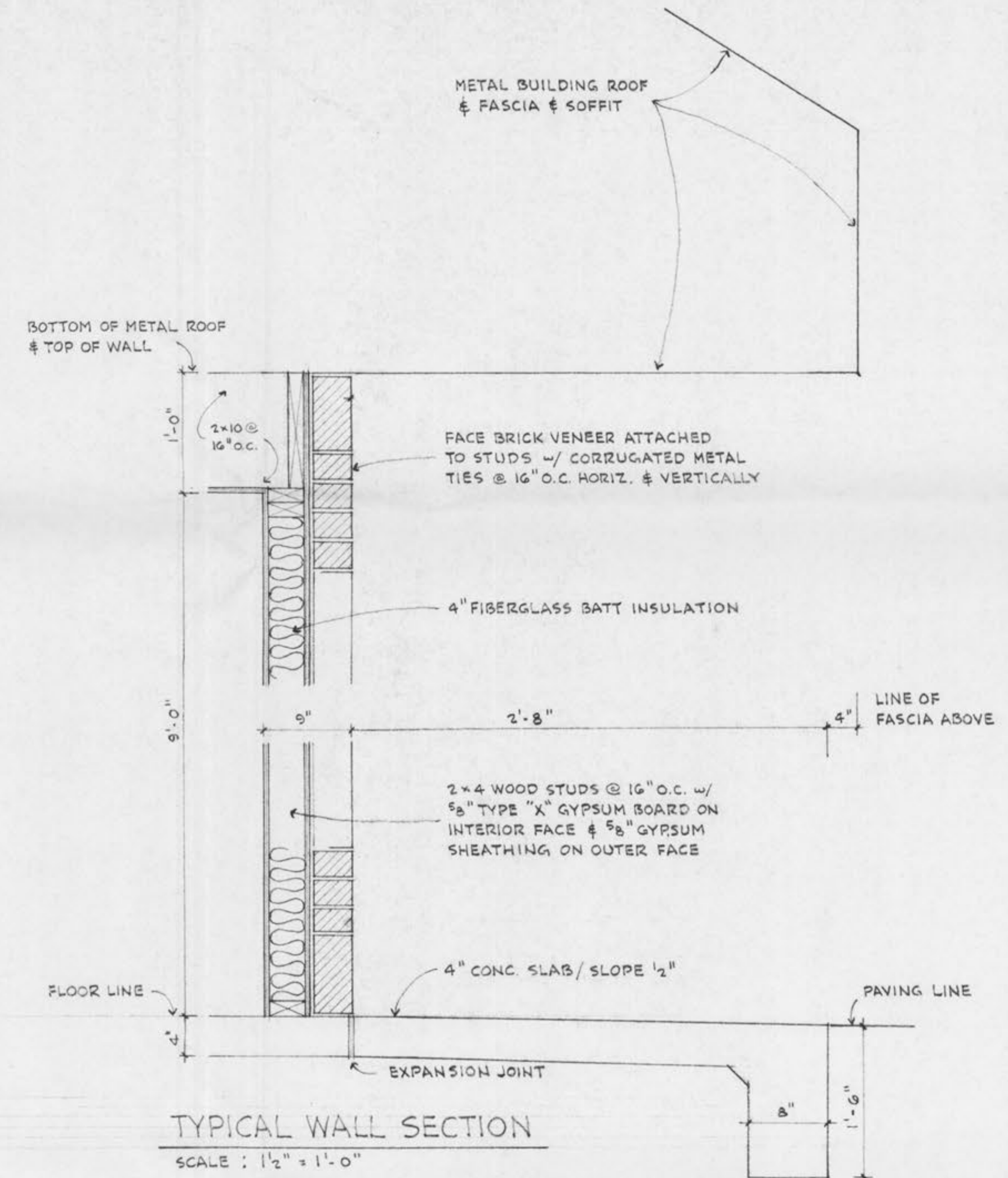


PANEL "P"											
PHASE A				PHASE B				PHASE C			
BRKR	CIR	WATT	DESCRIPTION	BRKR	CIR	WATT	DESCRIPTION	BRKR	CIR	WATT	DESCRIPTION
20/1	1	1465	LIGHTING	20/1	3	1260	LIGHTING	20/5	5	7300	RECEPT.
20/1	2	1440	LIGHTING	20/1	4	1440	LIGHTING	20/1	6	1465	LIGHTING
-	7	7300	RECEPT.	-	9	7300	RECEPT.	20/1	11	400	RECEPT.
20/1	8	500	LIGHTING	20/1	10	600	RECEPT.	20/1	12	600	RECEPT.
20/1	13	1200	TOIL. HTR.	20/2	15	1250	WTR. HTR.	-	17	1250	WTR. HTR.
20/3	14	7300	RECEPT.	-	16	7300	RECEPT.	-	18	7300	RECEPT.
20/3	19	7300	RECEPT.	-	21	7300	RECEPT.	-	23	7300	RECEPT.
20/3	20	7300	RECEPT.	-	22	7300	RECEPT.	-	24	7300	RECEPT.
20/3	25	7300	RECEPT.	-	27	7300	RECEPT.	-	29	7300	RECEPT.
40/3	26	3333	UNIT HTR.	-	28	3333	UNIT HTR.	-	30	3333	UNIT HTR.
40/3	31	3333	UNIT HTR.	-	33	3333	UNIT HTR.	-	35	3333	UNIT HTR.
40/3	32	3333	UNIT HTR.	-	34	3333	UNIT HTR.	-	36	3333	UNIT HTR.
40/3	37	3333	UNIT HTR.	-	39	3333	UNIT HTR.	-	41	3333	UNIT HTR.
20/1	38	1656	O.H. DOOR	20/1	40		SPARE	20/1	42		SPARE

PANEL "R"											
PHASE A				PHASE B				PHASE C			
BRKR	CIR	WATT	DESCRIPTION	BRKR	CIR	WATT	DESCRIPTION	BRKR	CIR	WATT	DESCRIPTION
20/1	1	800	RECEPT.	20/1	3	1000	RECEPT.	20/1	5	1800	LIGHTING
40/3	2	3333	UNIT HTR.	-	4	3333	UNIT HTR.	-	6	3333	UNIT HTR.
40/3	7	3333	UNIT HTR.	-	9	3333	UNIT HTR.	-	11	3333	UNIT HTR.
20/3	8	7300	RECEPT.	-	10	7300	RECEPT.	-	12	7300	RECEPT.
20/3	13	7300	RECEPT.	-	15	7300	RECEPT.	-	17	7300	RECEPT.
20/3	14	7300	RECEPT.	-	16	7300	RECEPT.	-	18	7300	RECEPT.
20/3	19	3333	UNIT HTR.	-	21	3333	UNIT HTR.	-	23	3333	UNIT HTR.
20/1	20	1656	O.H. DOOR	20/2	22	1000	BSBD. HTR.	-	24	1000	BSBD. HTR.
20/1	25	450	LIGHTING	20/1	27		SPARE	20/1	29		SPARE
40/3	26	720	CONDENS.	-	28	720	CONDENS.	-	30	720	CONDENS.
40/3	31	780	AIR. HAND.	-	33	780	AIR. HAND.	-	35	780	AIR. HAND.
40/3	32	2050	EXH. FAN	-	34	2050	EXH. FAN	-	36	2050	EXH. FAN
20/1	37		SPARE	20/1	39		SPARE	20/1	41		SPARE
	38		SPACE		40		SPACE		42		SPACE

LIGHT FIXTURE SCHEDULE						
TYPE	MANUFACTURER	CATALOG NO.	LAMPS NO. TYPE	FINISH	MOUNT.	REMARKS
A	LITHONIA	THS 400 HAIG -120	1 H33AR -400	STANDARD	HOOK	PROVIDE HOOK AND PLUG-IN RECEPTACLE
B	LITHONIA	ESIR -ELN	INCLUDED WITH FIXTURE	STANDARD	WALL	
C	EXTERIOR FIXTURE TO CLOSELY MATCH EXISTING					WITH PHOTOCELL CONTROL
D	LITHONIA	4MA 640 A12	6 F40CW/55	WHITE	SURFACE	
E	PRESCOLITE	WB 24	1 100A	ALUM.	WALL	MOUNT ABOVE MIRROR
F	PRESCOLITE	FSX-TB11	1 150R40	STANDARD	RECESSED	



(4) FIXED WINDOWS TO BE 1" INSULATED SAFETY GLASS IN METAL FRAME.  
ENTRANCE DOOR TO BE METAL w/ 1/4" CLEAR SAFETY GLASS.

**DAVID L. WHITFIELD A.I.A.**  
ARCHITECTS & PLANNERS  
14266 DINSMOOR DRIVE  
CHESTERFIELD, MISSOURI 63017-2910  
314-275-2226

A PROPOSED NEW ADDITION FOR  
**WILLERDING WELDING CO.**  
1270 WEST TERRA LANE  
O'FALLON, MISSOURI

SHEET NUMBER  
**2**  
OF THREE  
17 OCT 88  
ELEVATIONS