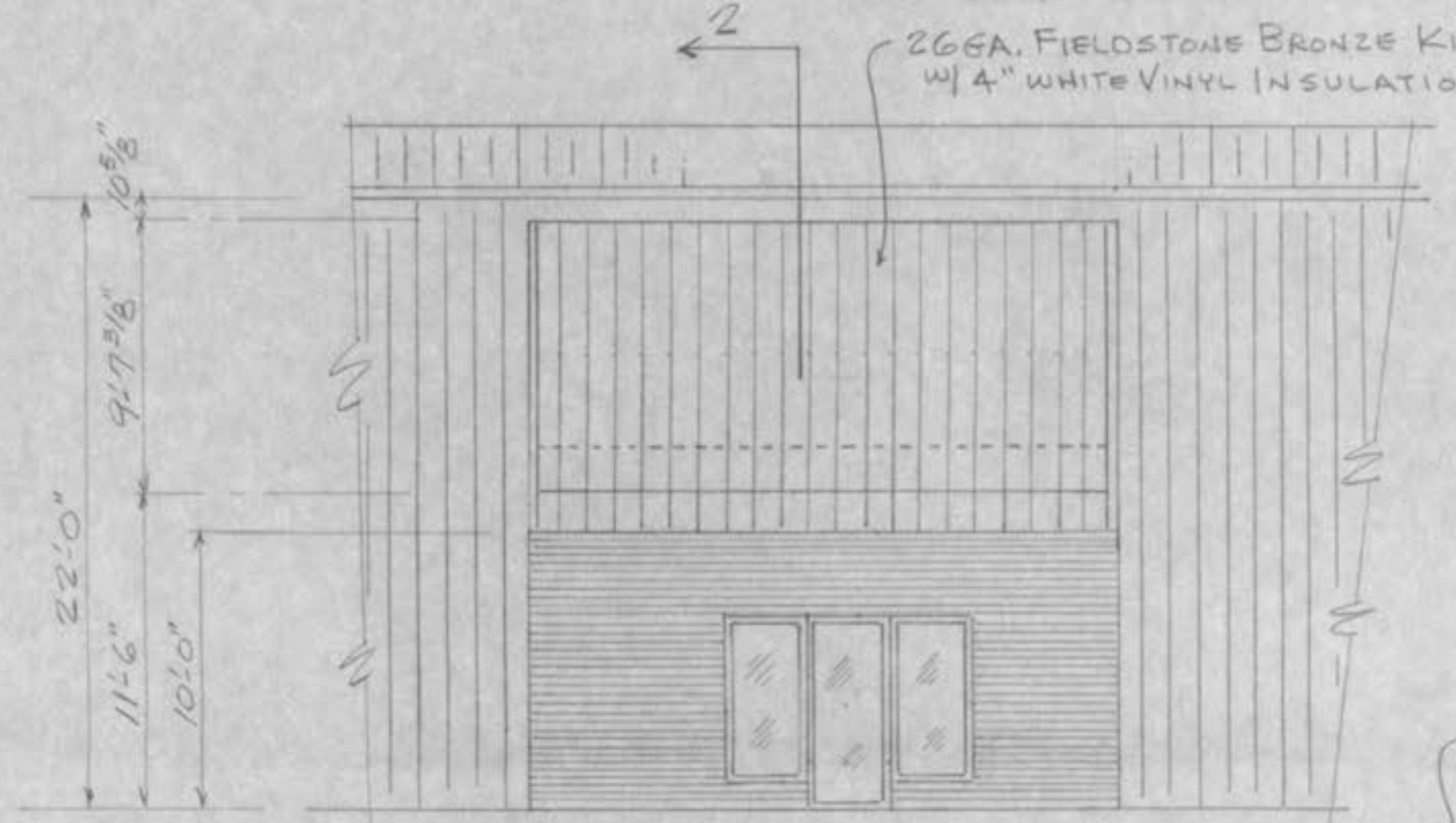
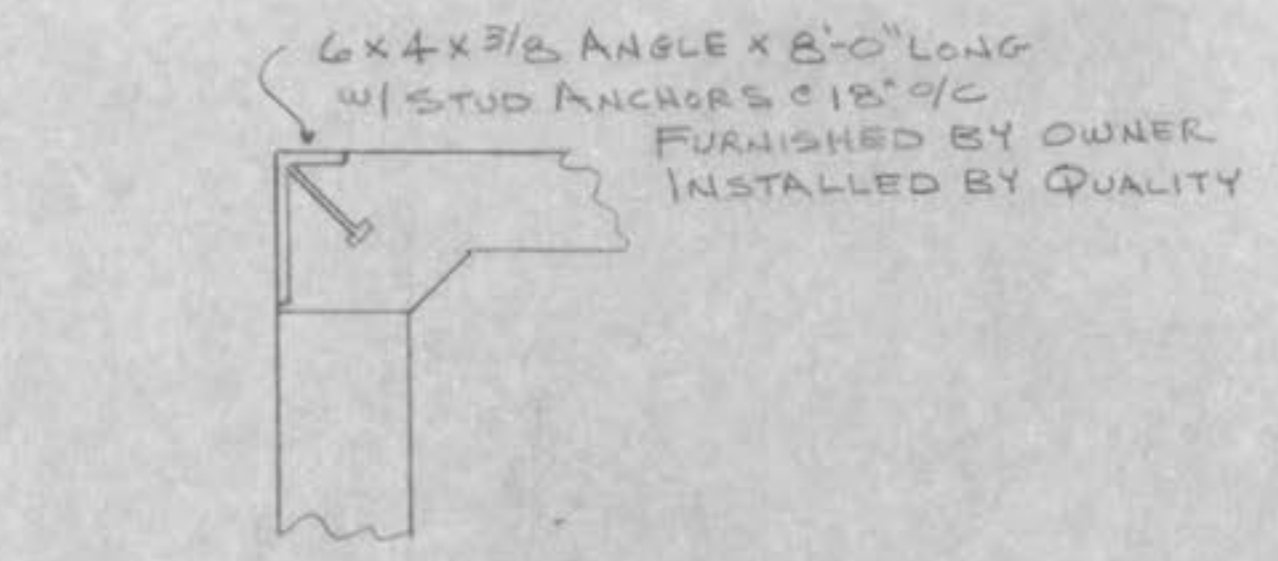


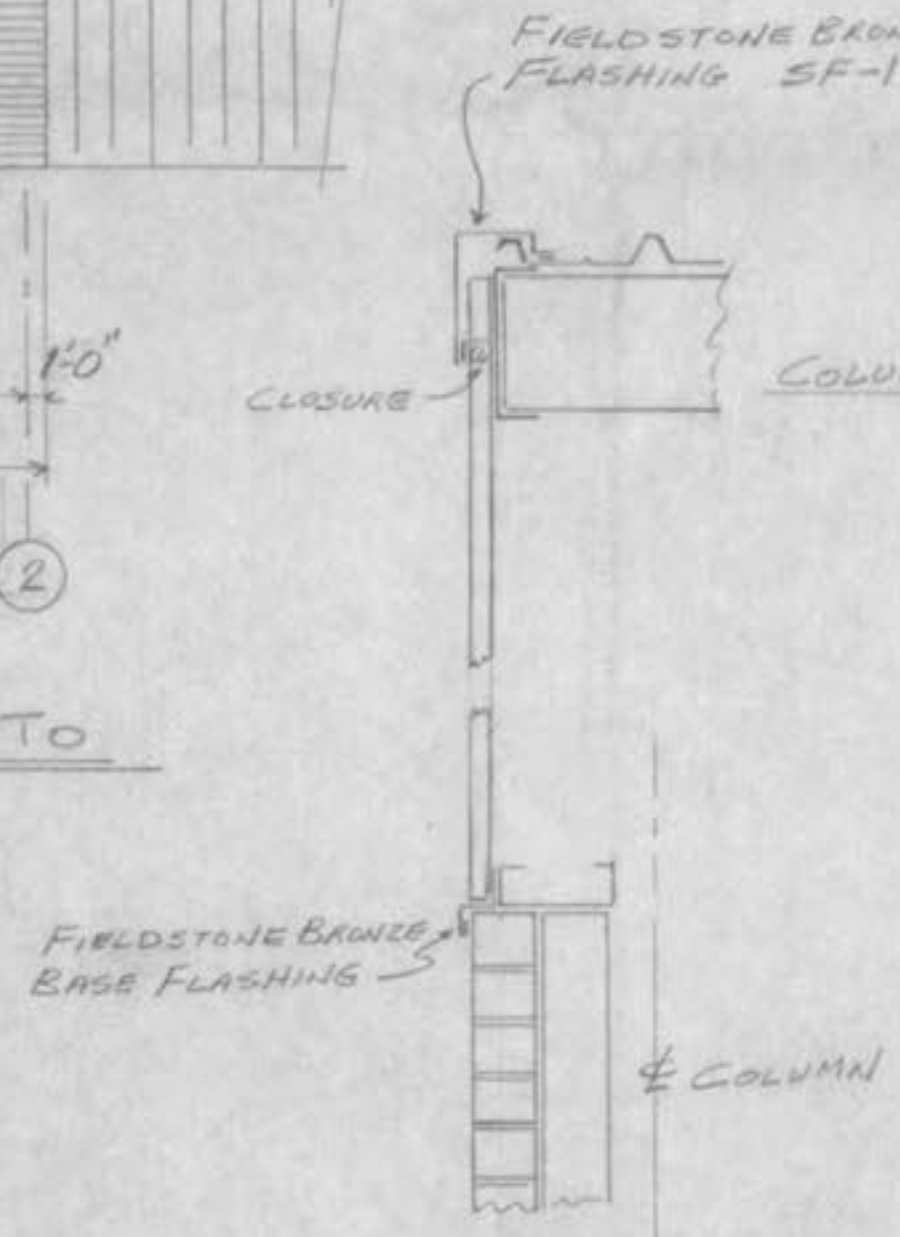
**SOUTH ELEVATION**  
SCALE 3/16" = 1'-0"



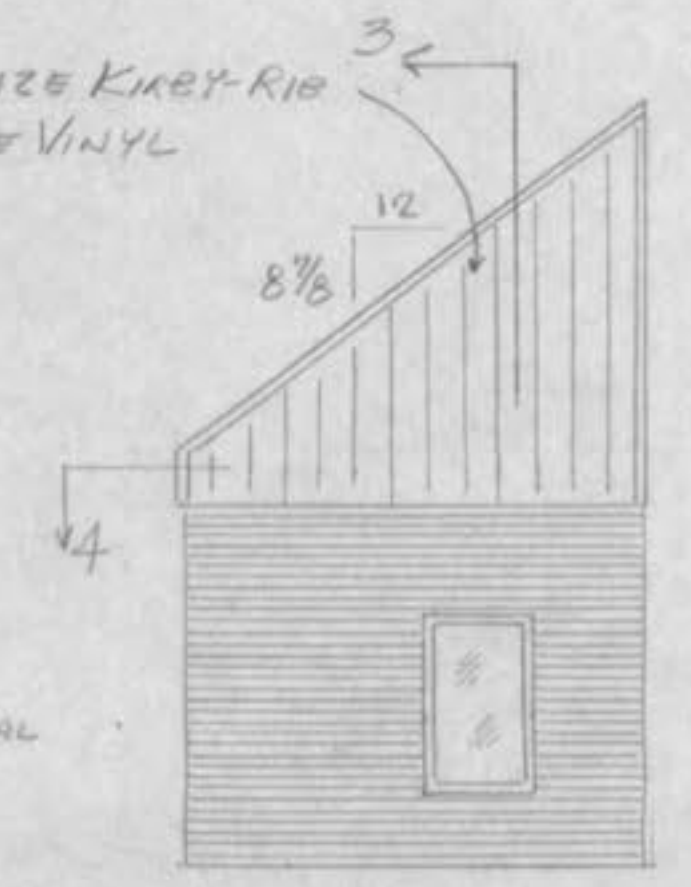
**WEST ELEVATION @ LEAN-TO**  
SCALE 3/16" = 1'-0"



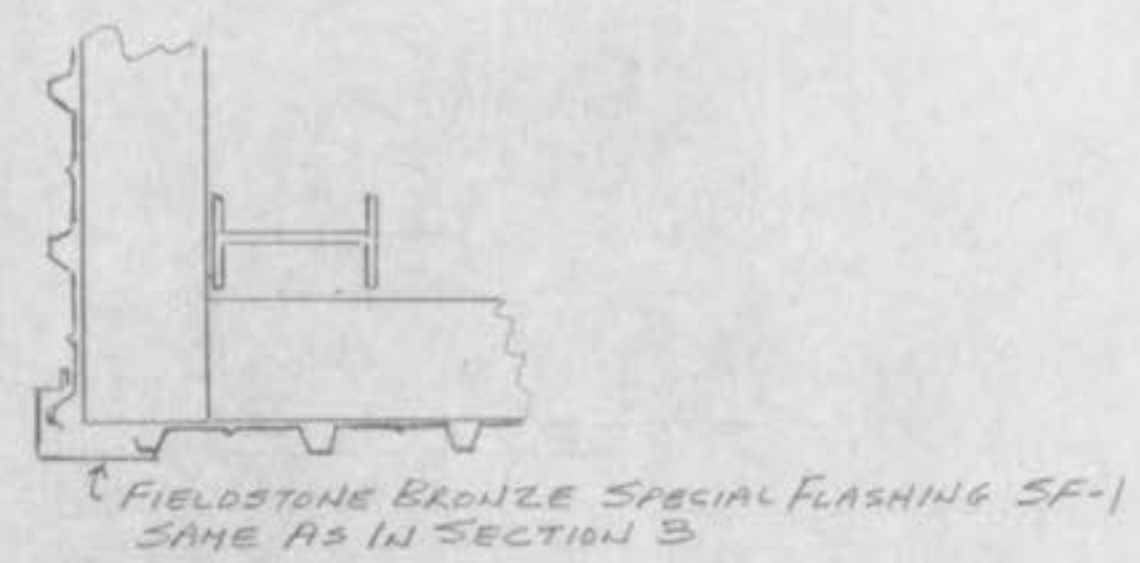
**SECTION 1**  
SCALE 1" = 1'-0"



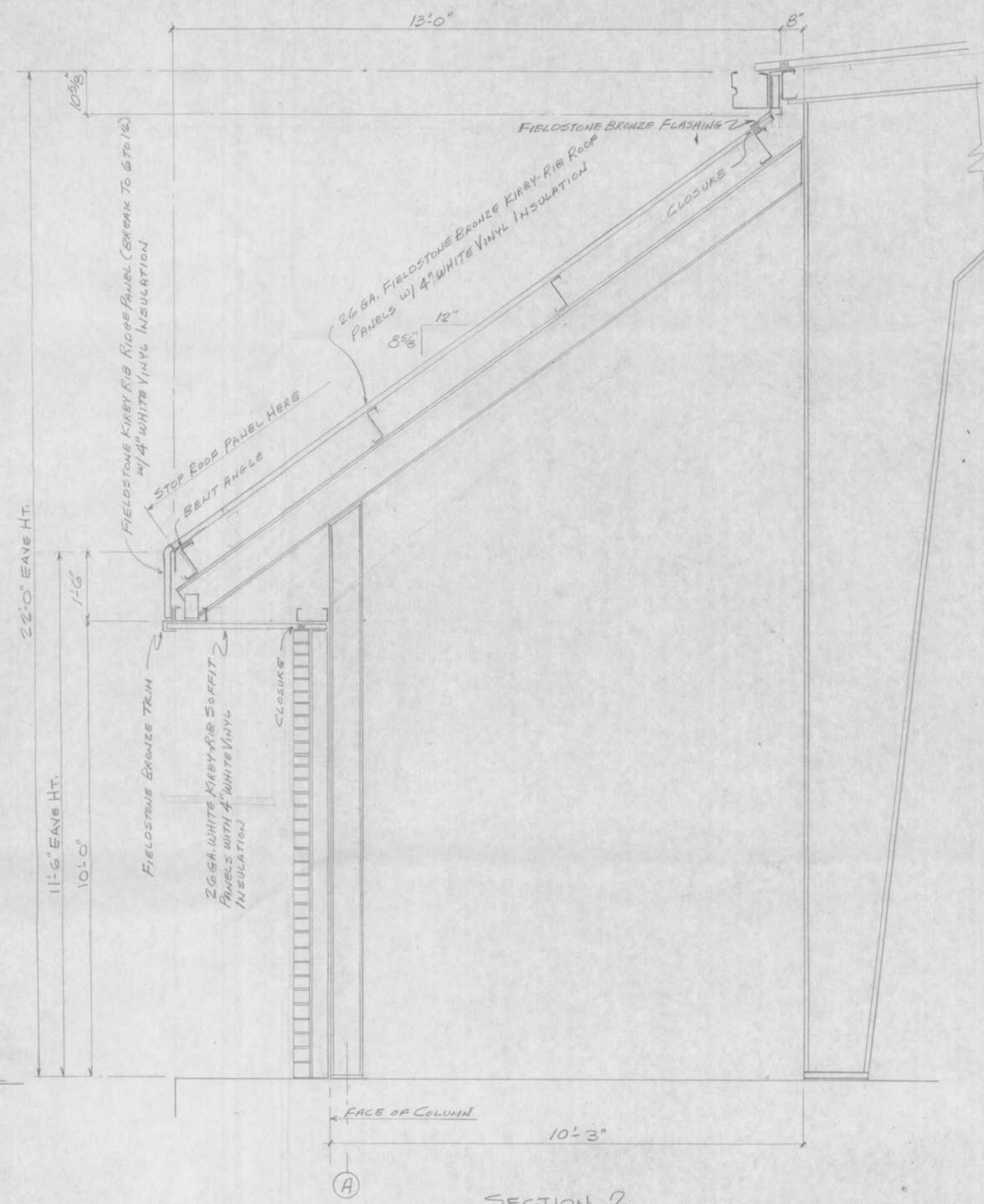
**SECTION 3**



**SOUTH ELEVATION @ LEAN-TO  
NORTH ELEVATION @ LEAN-TO  
SAME EXCEPT OPPOSITE HAND**  
SCALE 3/16" = 1'-0"



**SECTION 4**



**SECTION 2**  
SCALE 3/4" = 1'-0"

WALL ELEVATIONS & DETAILS		
SCALE	APPROVED BY	DRAWN BY
DATE 10-17-88		L.S.T.
WILLERDING WELDING CO.		DRAWING NUMBER
O'FALLON, MO.		2 OF 4