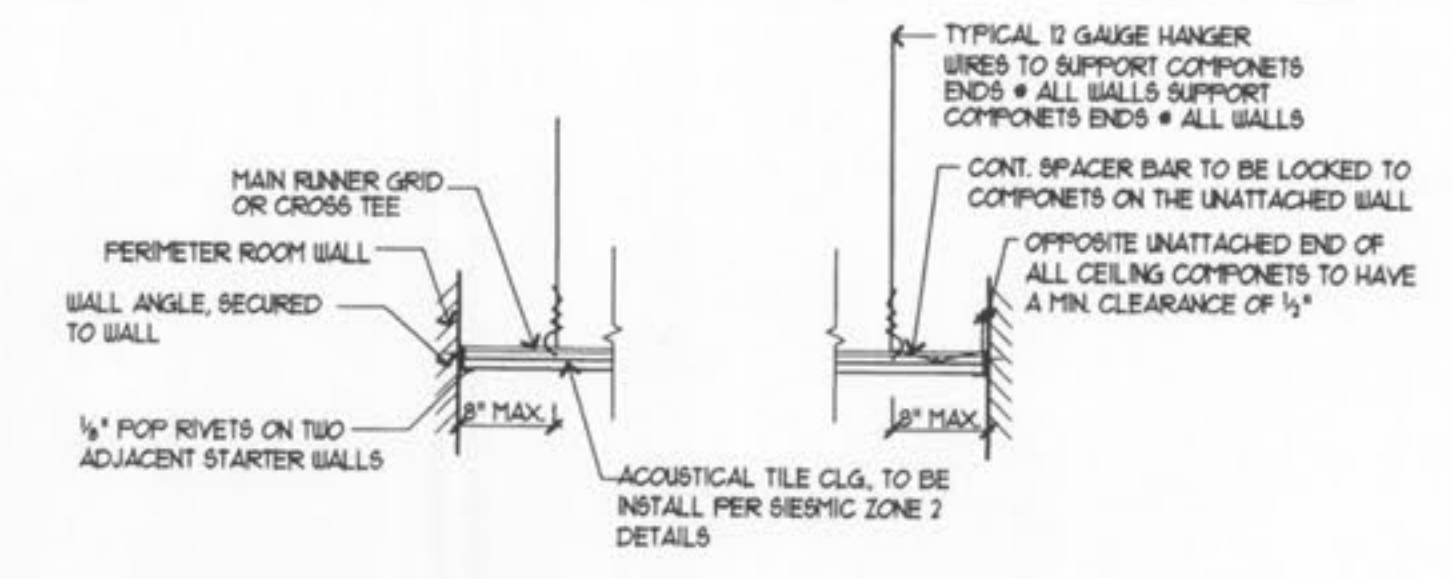
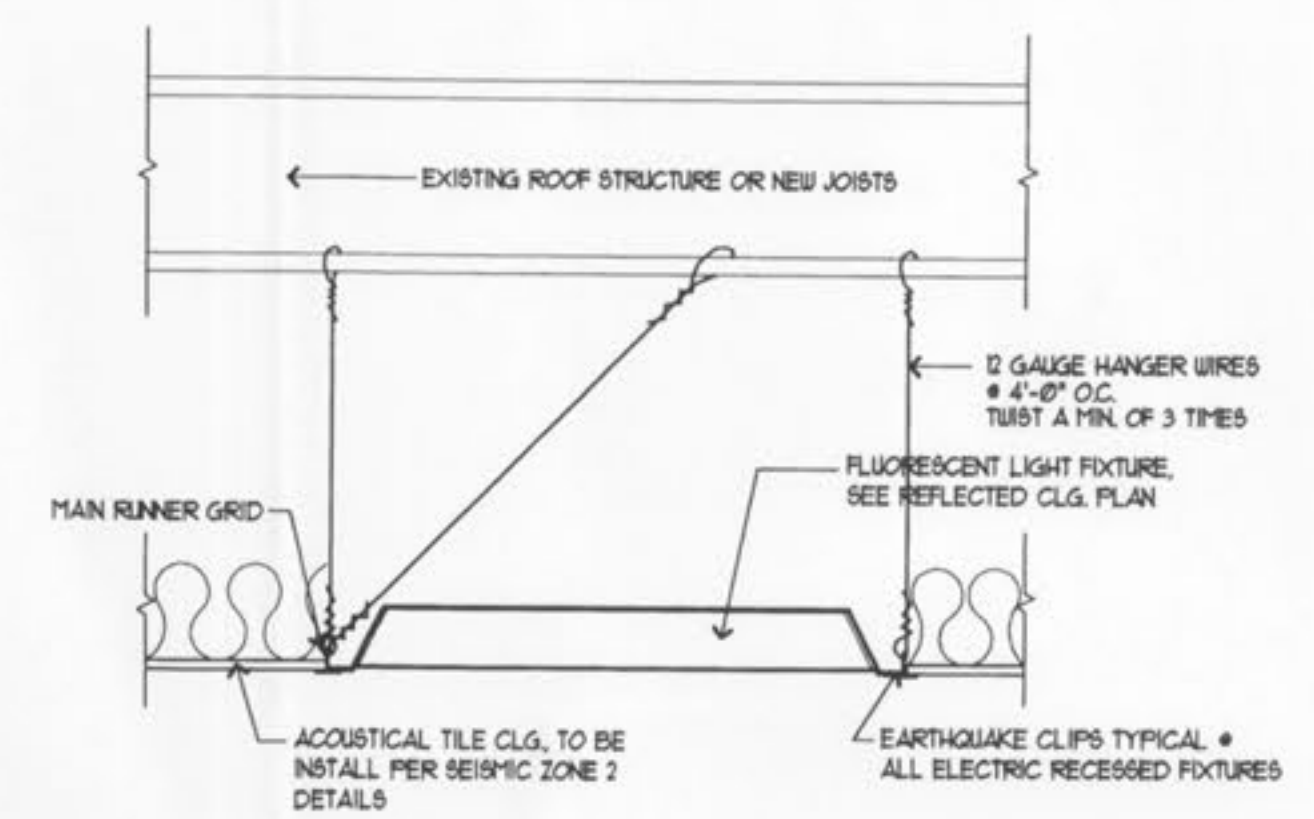


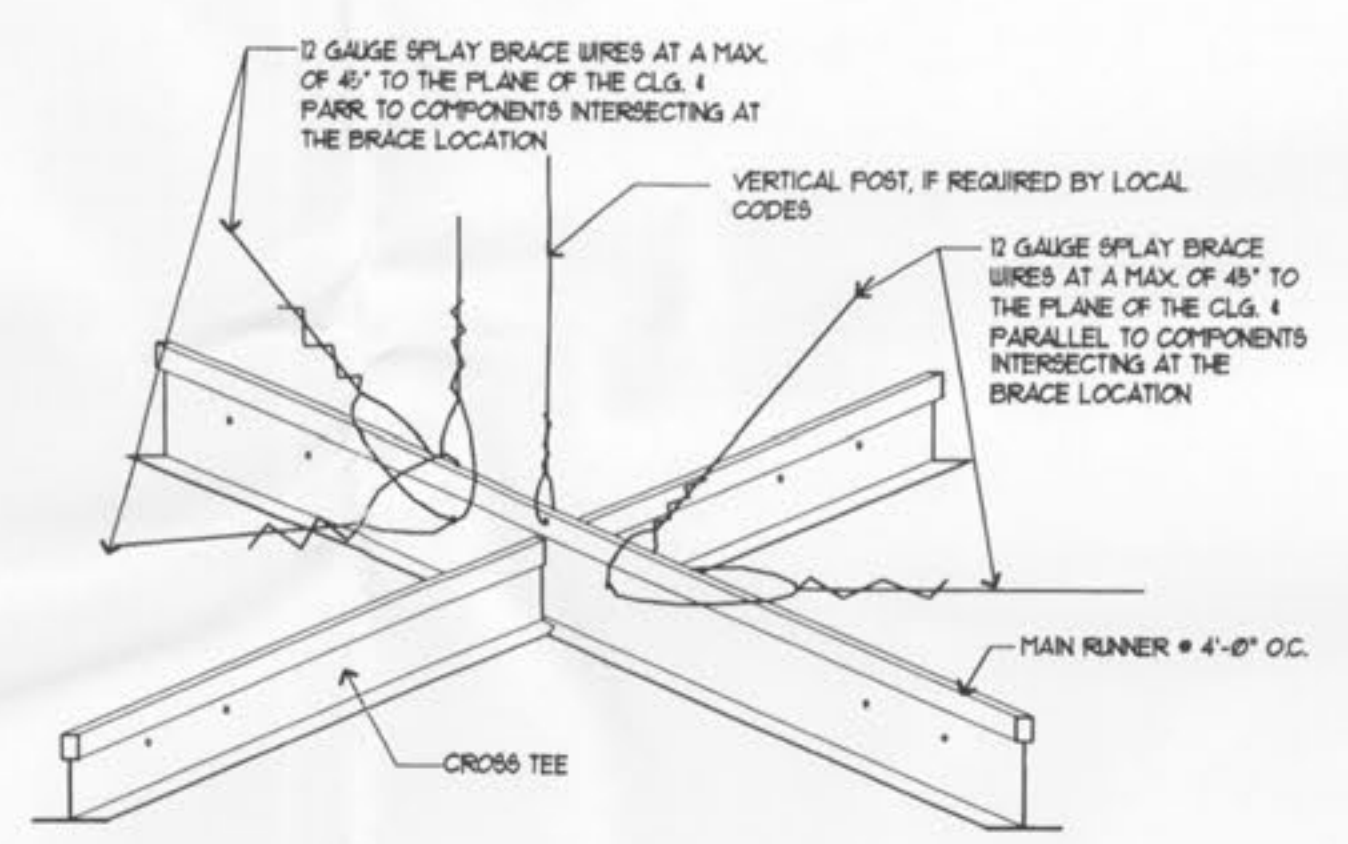
**1 REFLECTED CEILING PLAN**  
A3 | A3 SCALE: 3/32" = 1'-0"  
NORTH



**SUSP. CLG. INSTALLATION DETAILS**  
SCALE: NTS.



**TYP. BRACING DETAIL**  
SCALE: NTS. PER SIEISMIC ZONE 2



**DETAIL-REC. LIGHT FIX. ANCHORAGE**  
SCALE: NTS. PER SIEISMIC ZONE 2

**SYMBOLS LEGEND**

- 2 x 4 ACT. TILE CEILING
- 2"x4" RECESSED FLUORESCENT LIGHT FIXTURE
- EMERGENCY BATT. BACKUP LITE CONNECTED TO EMERGENCY CIRCUIT
- EMERG. EXIT. LIGHT & HEADS CONNECTED TO EMERGENCY CIRCUIT
- EXHAUST FAN
- FAN SWITCH
- METAL HALIDE

**HVAC NOTES**

HEATING, VENTILATION, AND AIR CONDITIONING SHALL BE DESIGNED AND INSTALLED IN STRICT ACCORDANCE WITH THE LATEST EDITION OF THE "ASHRAE" GUIDE, THE CONSTRUCTION STANDARDS OF "SMACNA" AND ALL LOCAL CODES.