

ELECTRICAL SYMBOLS

- 1-A CEILING LIGHT } 1 = CIRCUIT NO.
 ○ A = FIXTURE TYPE
- WALL LIGHT OUTLET
- ⊕ EXIT LIGHT WITH BATTERY PACK.
- ⊙ 120 VOLT FLOOR RECEPTACLE.
- ⊙ FLOOR OUTLET FOR PHONE.
- ⊕ 20 AMP DUPLEX RECEPTACLE.
- ⊕ SINGLE POLE SWITCH.
- ⊕ 3 WAY SWITCH.
- ⊕ 60 AMP, 3 PHASE RECEPTACLE WITH GROUND, (3) #6 AND (1) #10 GROUND.
- ⊕ UNIT HEATER, 10KW, 208V, 3 PHASE, 3 #8.
- ⊕ PUSHBUTTON STATION FOR OVERHEAD DOORS.
- ⊕ INDICATES TWO PHASE CONDUCTORS AND ONE NEUTRAL.
- ⊕ INDICATES GREEN GROUNDING CONDUCTOR.

ELECTRIC AIR HANDLING UNIT - CARRIER 40AQ024330-DE
 25,600 BTU / 7.5 KW / 3ϕ / 19 A
 CONDENSING UNIT - CARRIER 38EN024-3
 208V / 3ϕ / 18 A

⊕ - THERMOSTAT LOCATION

ALL DUCT BRANCHES ARE 8" ϕ ROUND FIBERGLASS.

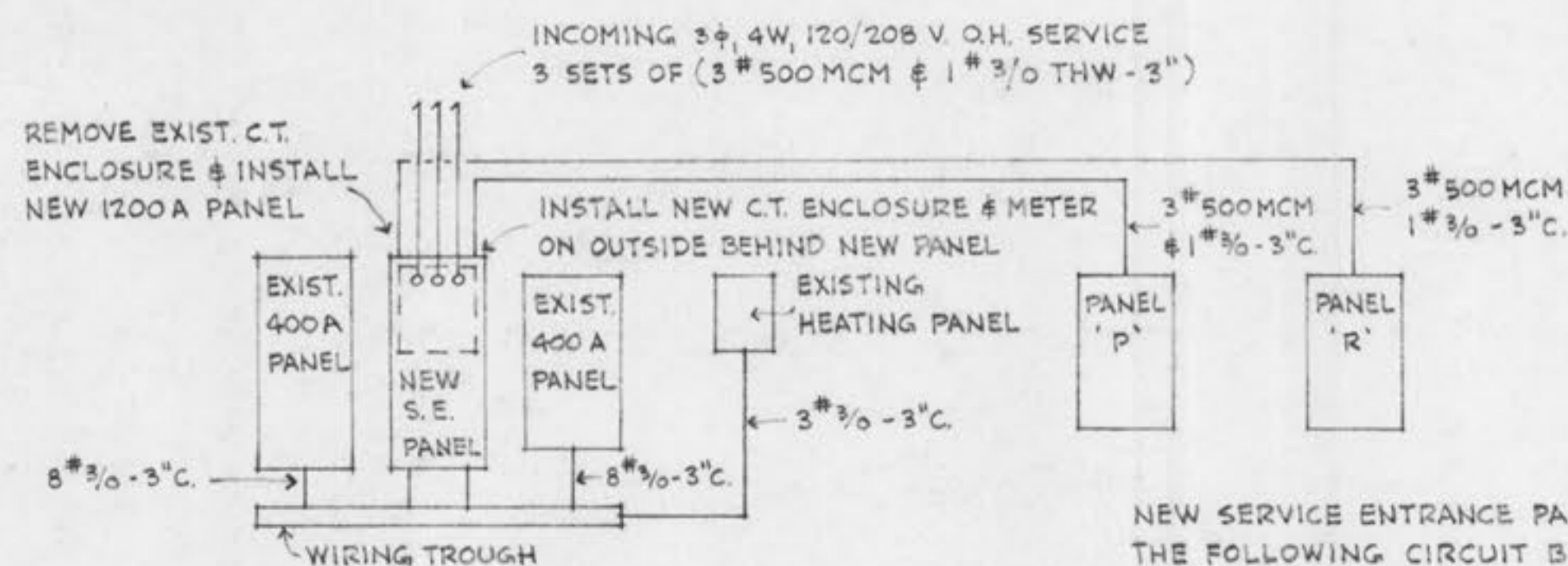
TOILET TO HAVE EXHAUST FAN VENTED THRU EXTERIOR WALL. FAN TO BE 1/30 H.P. / 75 CFM / w/ AUTOMATIC LOUVER.

ELECTRIC UNIT HEATER (8 REQ'D) IS 10KW / 1/30 H.P. FAN MOTOR / MOUNT TO MATCH EXISTING.

ELECTRIC BASEBOARD HEATER (2 REQ'D) 48" LONG, w/ BUILT-IN THERMOSTAT. TOILET HEATER SHALL BE FLUSH TYPE, FORCED AIR, 1200 WATT, 120V. w/ BUILT-IN THERMOSTAT.

H.V.A.C. & ELECTRICAL PLAN

SCALE: 1/4" = 1'-0"



NOTE: SERVICE CONDUCTORS AND FEEDERS SHALL BE COPPER WITH THW INSULATION.

RISER DIAGRAM
 NO SCALE

ELECTRICAL NOTES:

1. PLUG-IN STRIP w/ OUTLETS 24" O.C. / MOUNT AT COUNTER BACKSPLASH.
2. PHOTOCELL MOUNTED ON ENTRY FASCIA.
3. 120 V, 1/3 H.P. 1ϕ OVERHEAD DOOR MOTOR.
4. BASEBOARD HEATERS, 208V, 1ϕ.
5. TOILET, WALL HEATER, 120V.
6. LIGHT FIXTURES SHALL BE FURNISHED COMPLETE WITH LAMPS.
7. SEE LIGHT FIXTURE SCHEDULE SHEET 2.

NEW SERVICE ENTRANCE PANEL IS 1200A WITH THE FOLLOWING CIRCUIT BREAKERS:

- 3P 400A FOR EXISTING PANEL
- 3P 400A " " " "
- 3P 400A " PANEL "P"
- 3P 400A " PANEL "R"
- 3P 200A " EXISTING HEATING PANEL
- 3P 400A SPACE

UTILITY PLAN