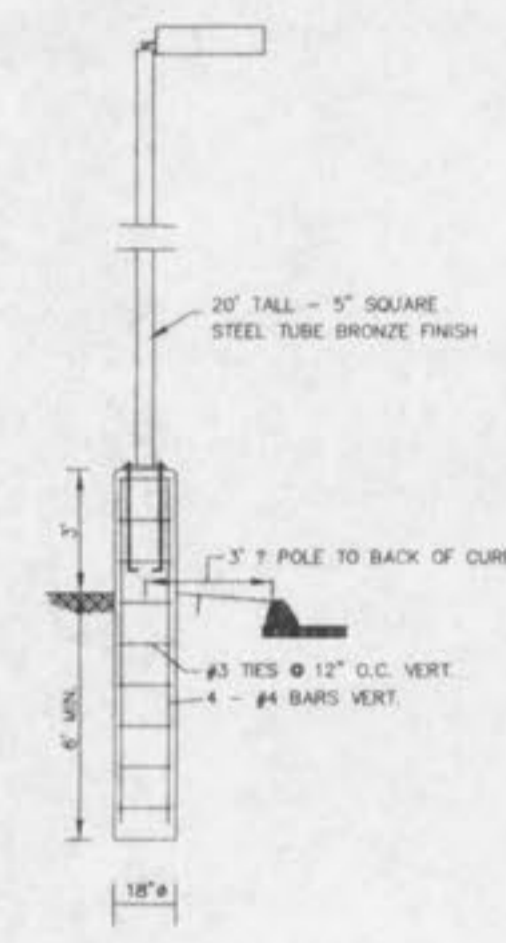


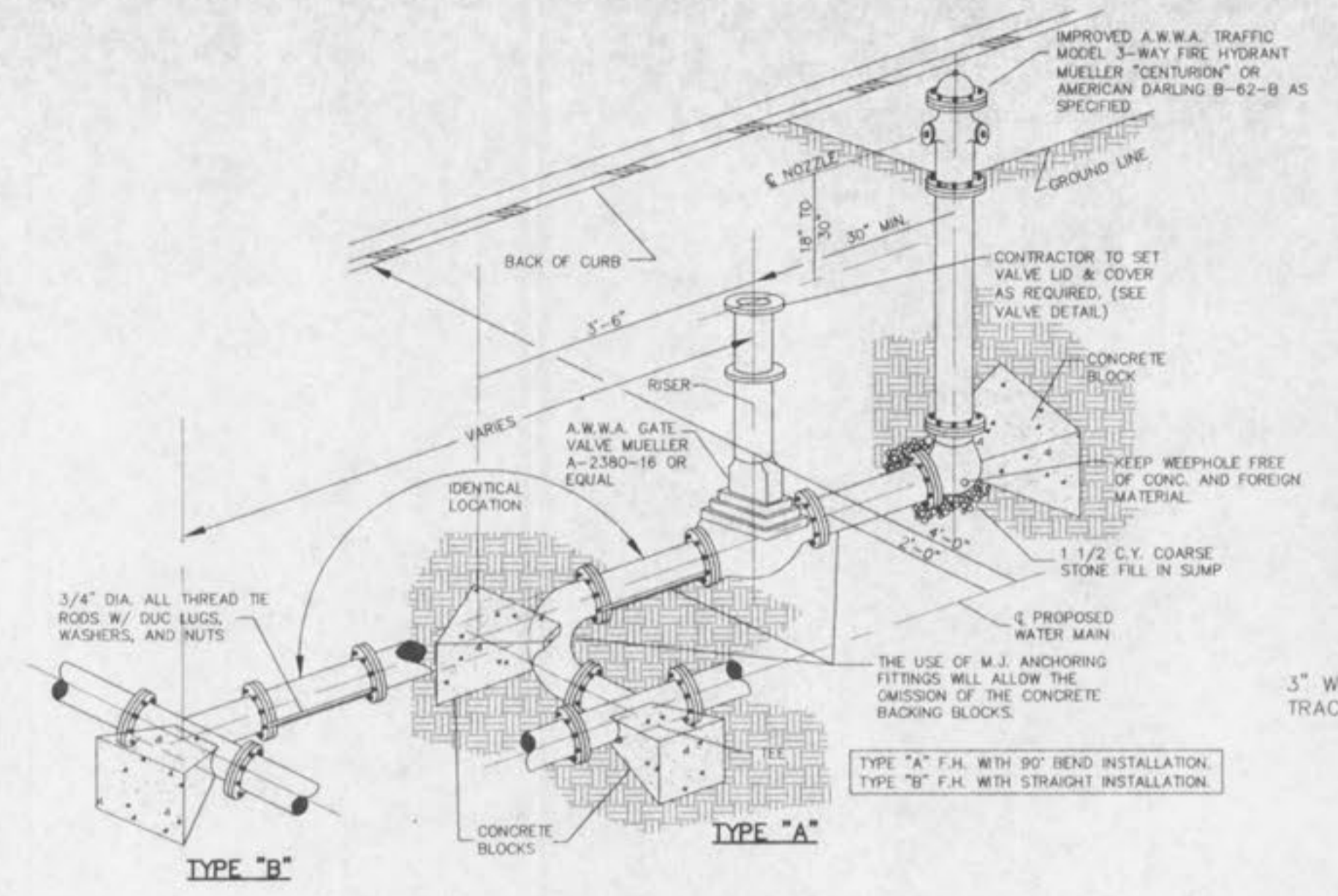
**BUILDING MOUNTED LIGHT**  
NOT TO SCALE



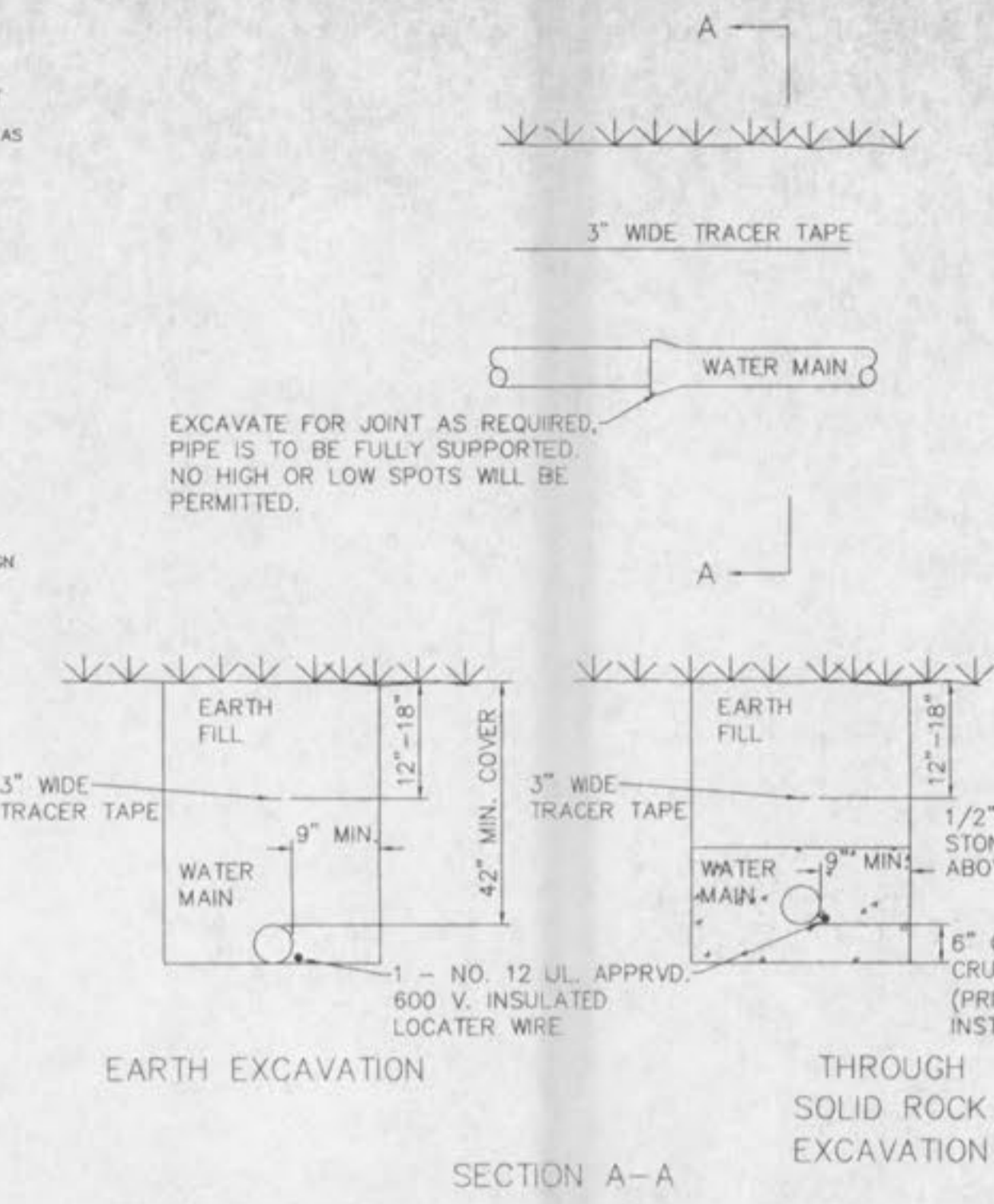
**LIGHT POLE & BASE**  
NOT TO SCALE



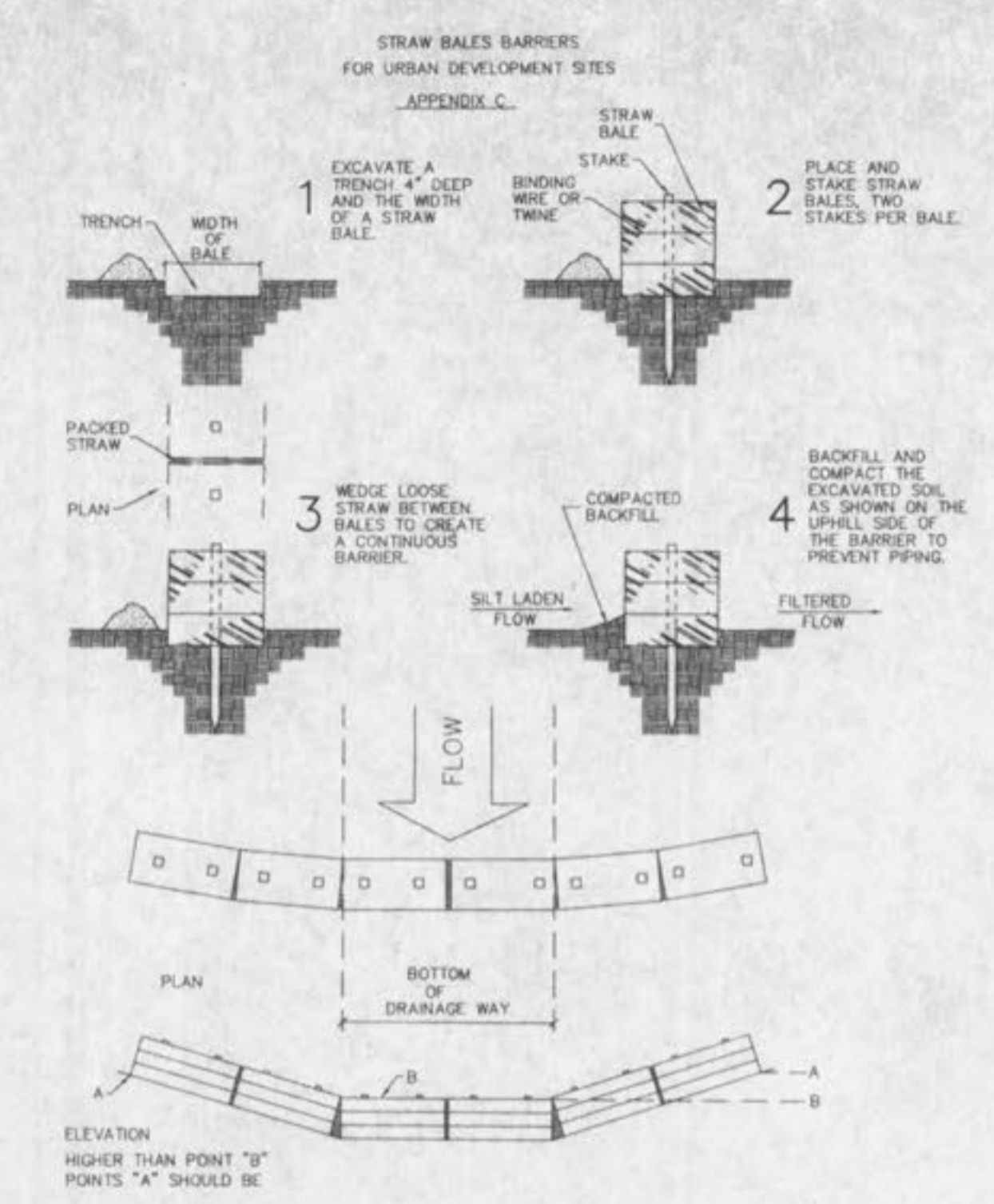
**TYPICAL WATER AND SEWER SEPARATION**  
NOT TO SCALE



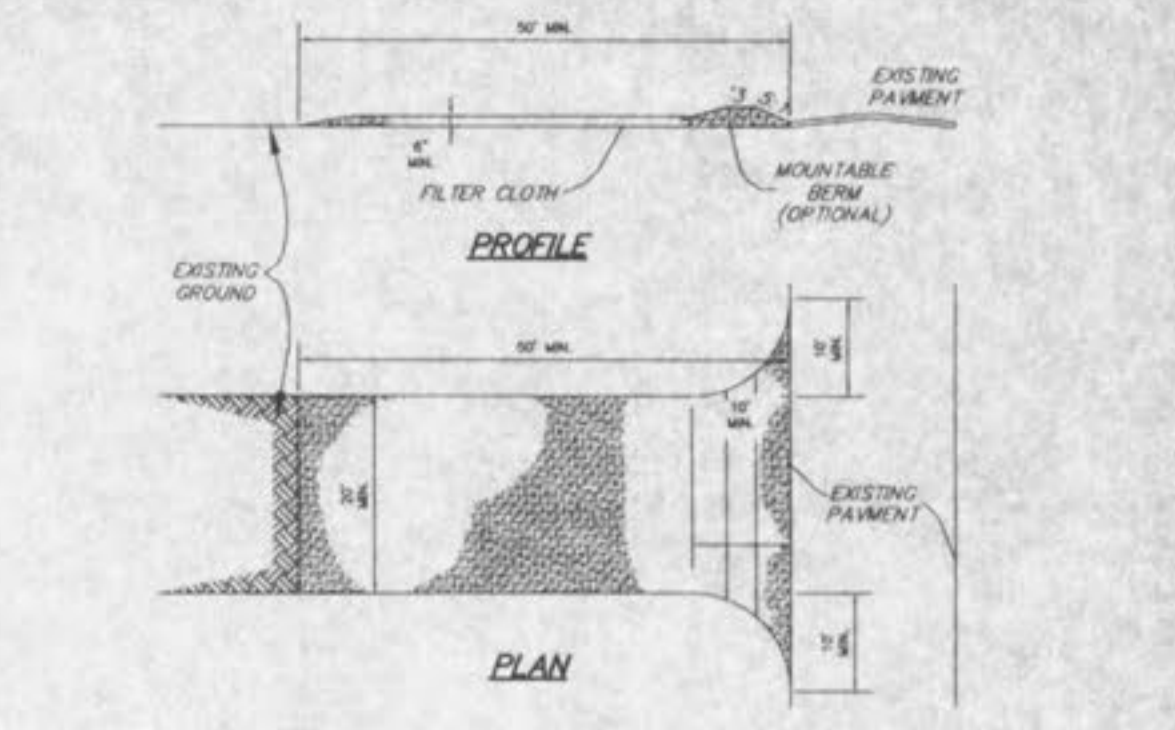
**FIRE HYDRANT DETAIL**  
NOT TO SCALE



**TYPICAL WATER MAIN INSTALLATION DETAILS**  
NOT TO SCALE

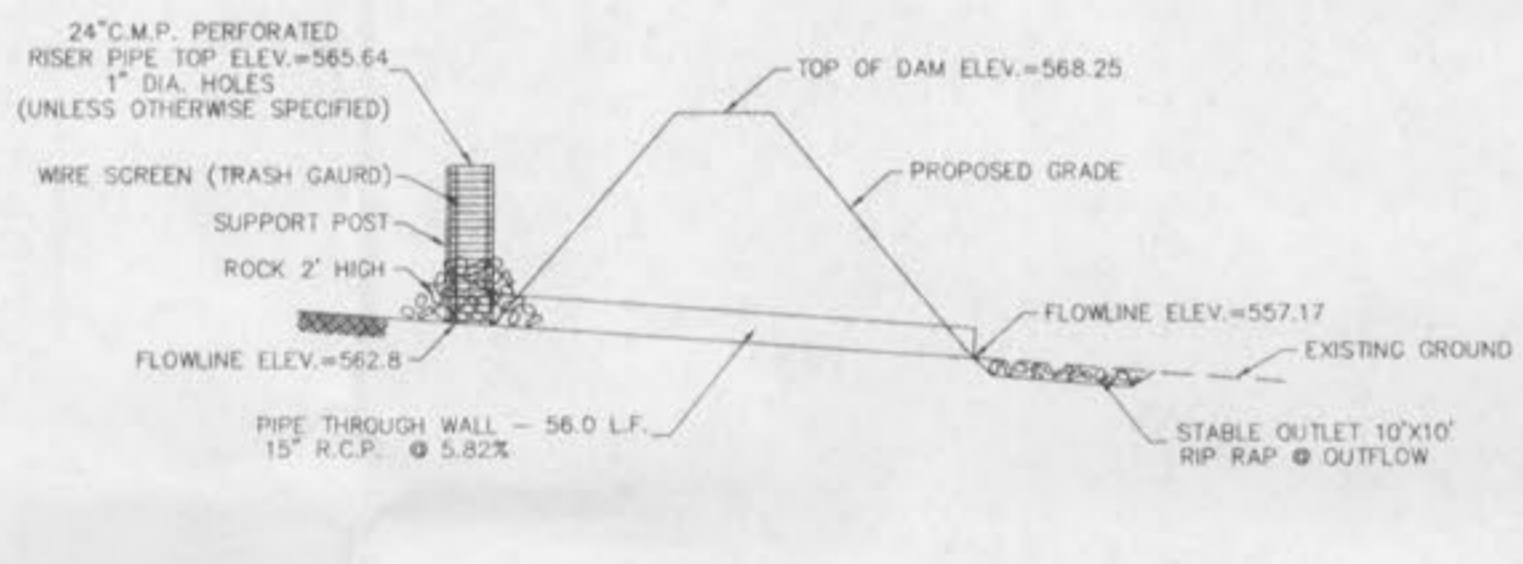


**STRAW BALES BARRIERS FOR URBAN DEVELOPMENT SITES**  
APPENDIX C

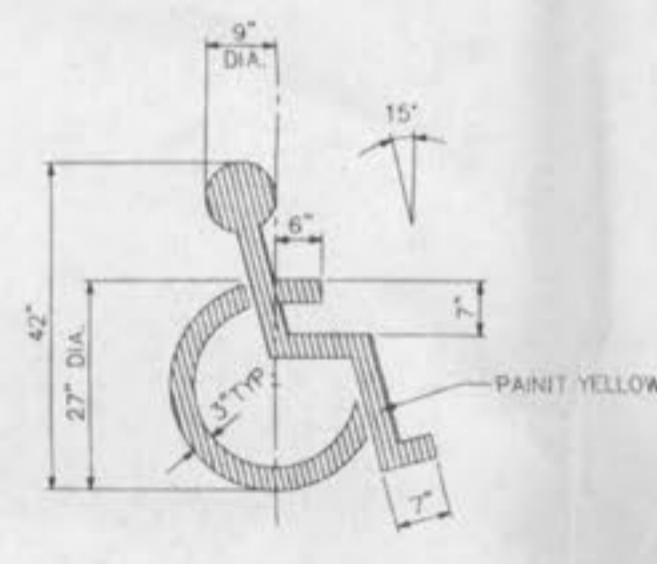


- CONSTRUCTION SPECIFICATIONS**
- Stone Size - Use 2" stone, or reclaimed or recycled concrete equivalent.
  - Length - As required, but not less than 50 feet (except on a single residence lot where a 30 foot minimum length would apply).
  - Thickness - Not less than six (6) inches.
  - Width - Twenty (20) foot minimum, but not less than the full width at points where ingress or egress occurs.
  - Filter Cloth - Will be placed over the entire area prior to placing of stone. Filter will not be required on a single family residence lot.
  - Surface Water - All surface water flowing or diverted toward construction entrances shall be piped across the entrance. If piping is impractical, a mountable berm with 5:1 slopes will be permitted.
  - Maintenance - The entrance shall be maintained in a condition which will prevent tracking or flowing of sediment onto public rights-of-way. This may require periodic top dressing with additional stone as conditions demand and repair and/or cleanup of any measures used to trap sediment. All sediment spilled, dropped, washed or tracked onto public rights-of-way must be removed immediately.
  - Washing - Wheels shall be cleaned to remove sediment prior to entrance onto public rights-of-way when washing is required. It shall be done on an area stabilized with stone and which drains into an approved sediment trapping device.
  - Periodic inspection and needed maintenance shall be provided after each rain.

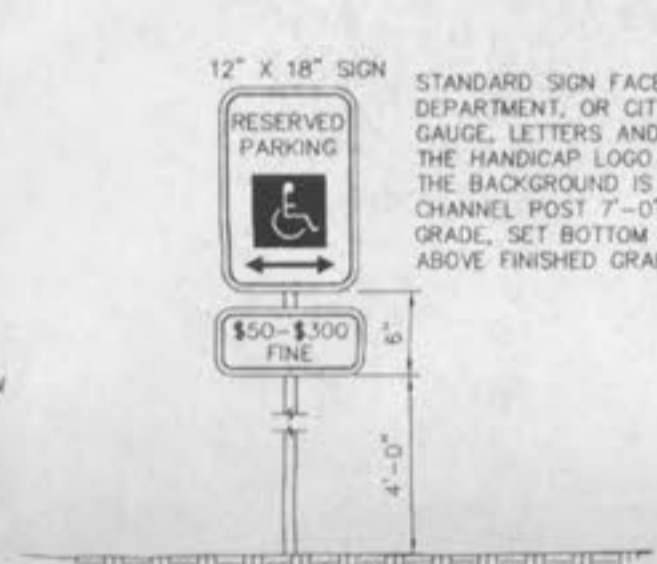
**STABILIZED CONSTRUCTION ENTRANCE/WASHDOWN AREA**  
NOT TO SCALE



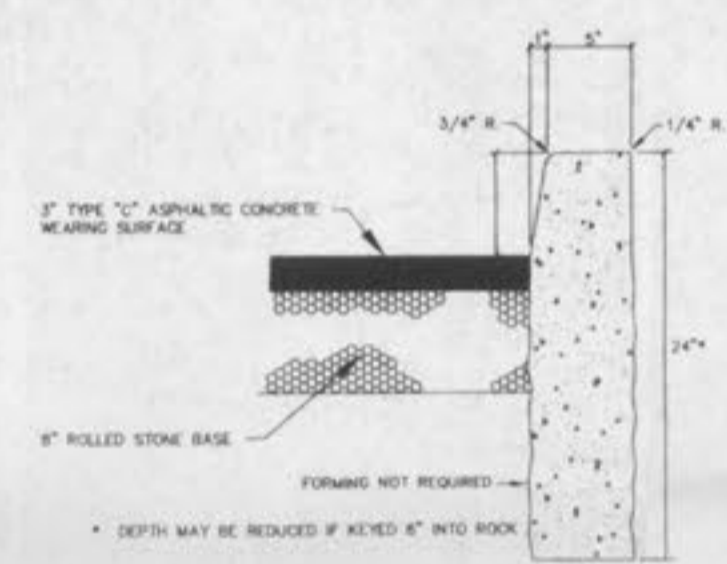
**TEMPORARY SEDIMENT BASIN DETAIL**  
NOT TO SCALE



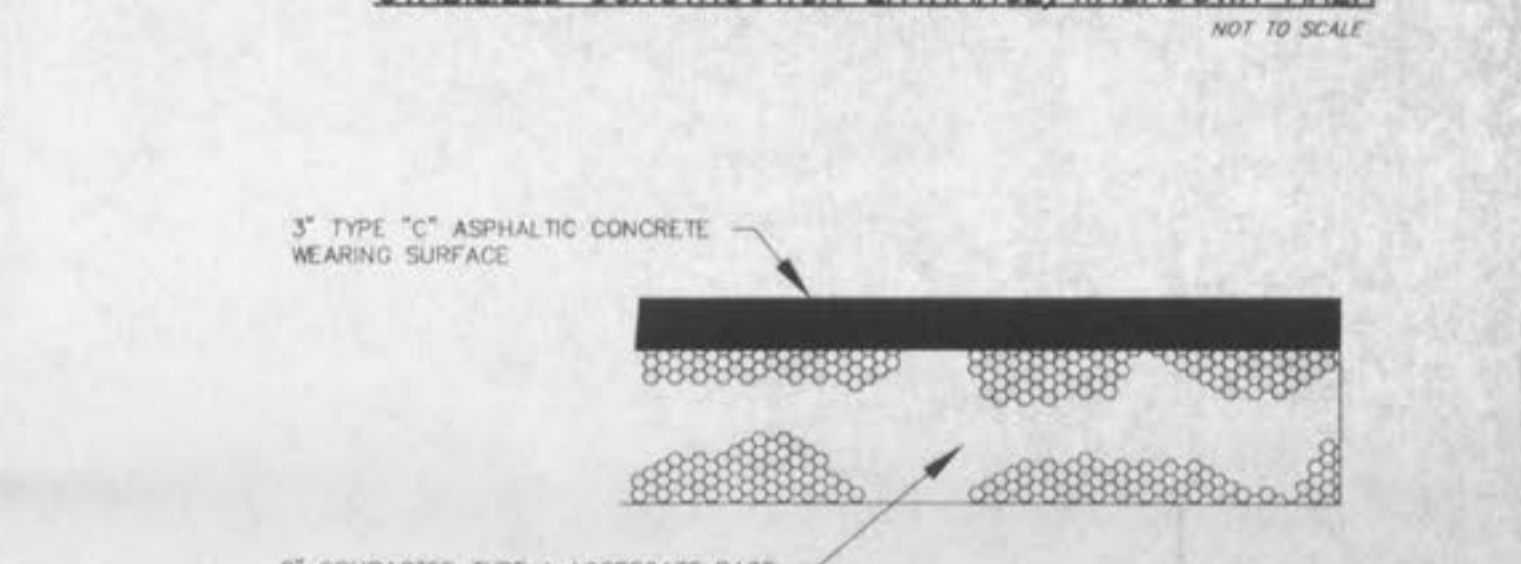
**PAINTED HANDICAPPED PARKING SYMBOL**  
NOT TO SCALE



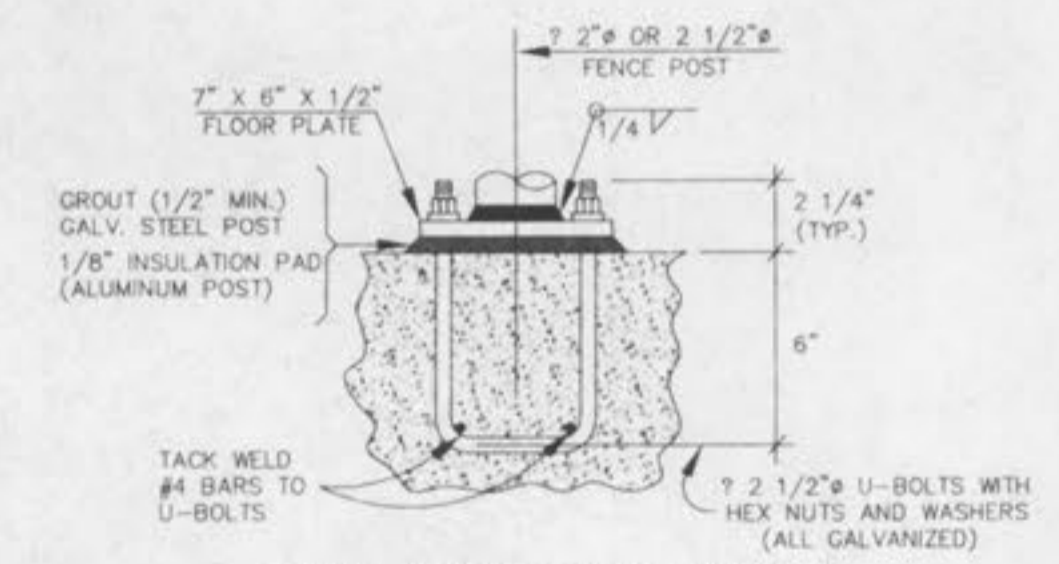
**HANDICAP PARKING SIGN**  
NOT TO SCALE



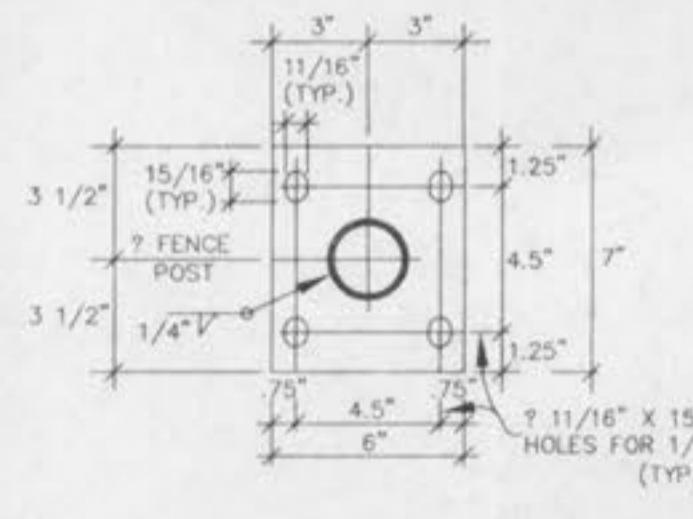
**TYPE "S" CONCRETE CURB**  
NOT TO SCALE



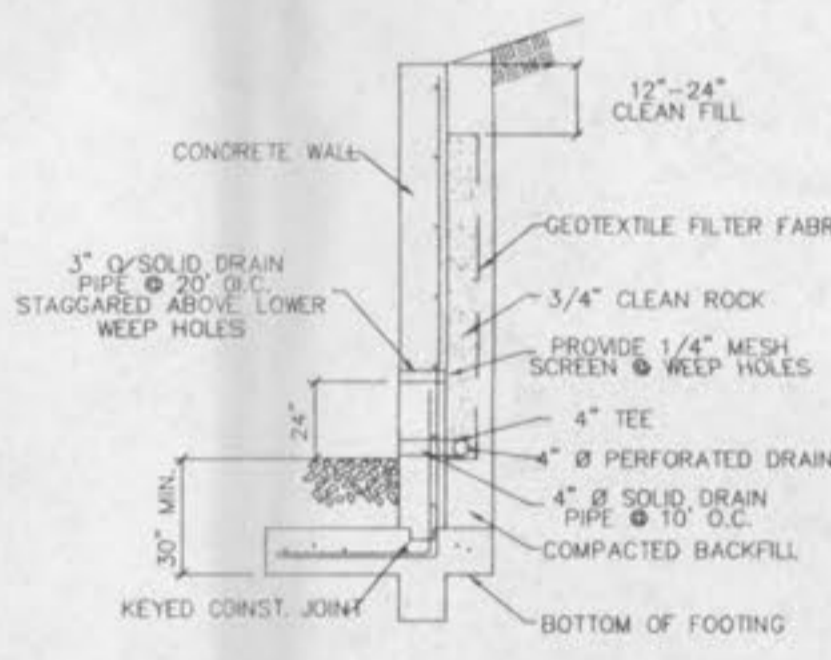
**ASPHALT PAVEMENT DETAIL**  
NOT TO SCALE



**TYPICAL FENCE POST CONNECTION**  
N.T.S.



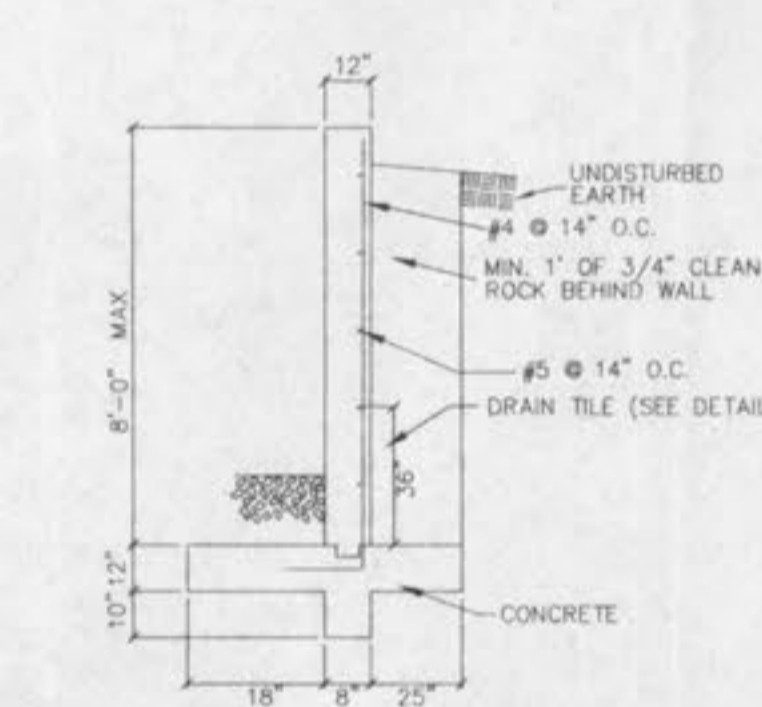
**PLAN OF FLOOR PLATE**  
N.T.S.



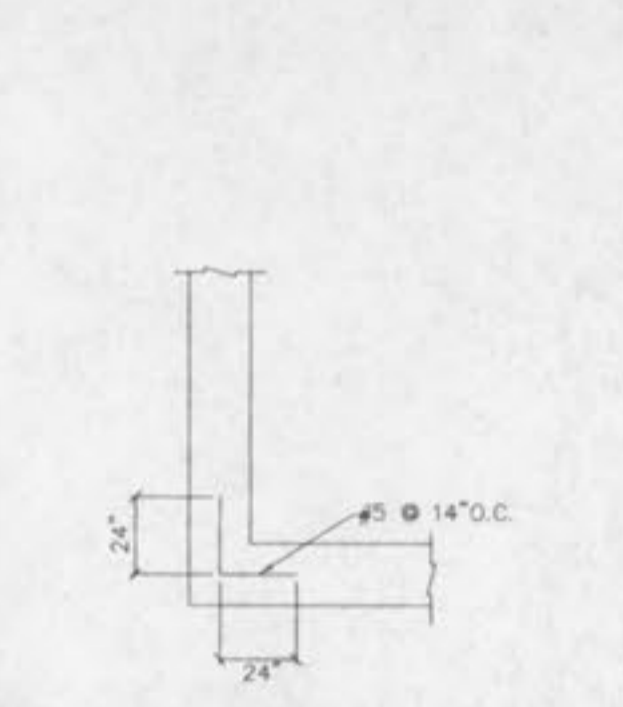
**DRAIN TILE DETAIL**  
NOT TO SCALE

**GENERAL DETAIL NOTES**

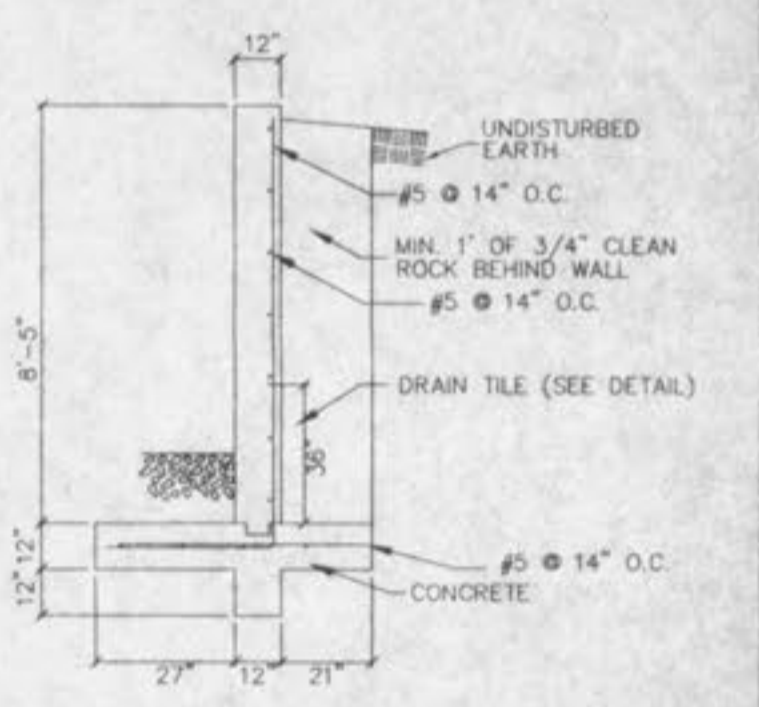
- Concrete f'c = 3000 p.s.i.
- Reinforced steel: Grade 60 (min.) fy = 60,000 p.s.i. f's = 24,000 p.s.i. (min.)
- Soil beneath footing to have allowable soil pressure of 2,000 p.s.i. minimum.
- Clear distance for reinforcement: Bottom reinforcement of footings = 3" all other locations = 2"
- Construction joints to be at 35' minimum on center.
- Backfill to be compacted to 90% of maximum density as determined by the "Modified AASHTO T-180 Compaction Test."
- Bottom of footings of reinforced concrete retaining wall shall be minimum of 30" below ground surface.
- Underground utilities have been plotted from available information and therefore their locations shall be considered approximate only. The verification of the location of all underground utilities, either shown or not shown on these plans shall be the responsibility of the contractor, and shall be located prior to any grading or construction of the improvements.
- When stem wall and foundation are poured separately, a 2"x6" keyed construction joint shall be provided between stem wall and foundation.



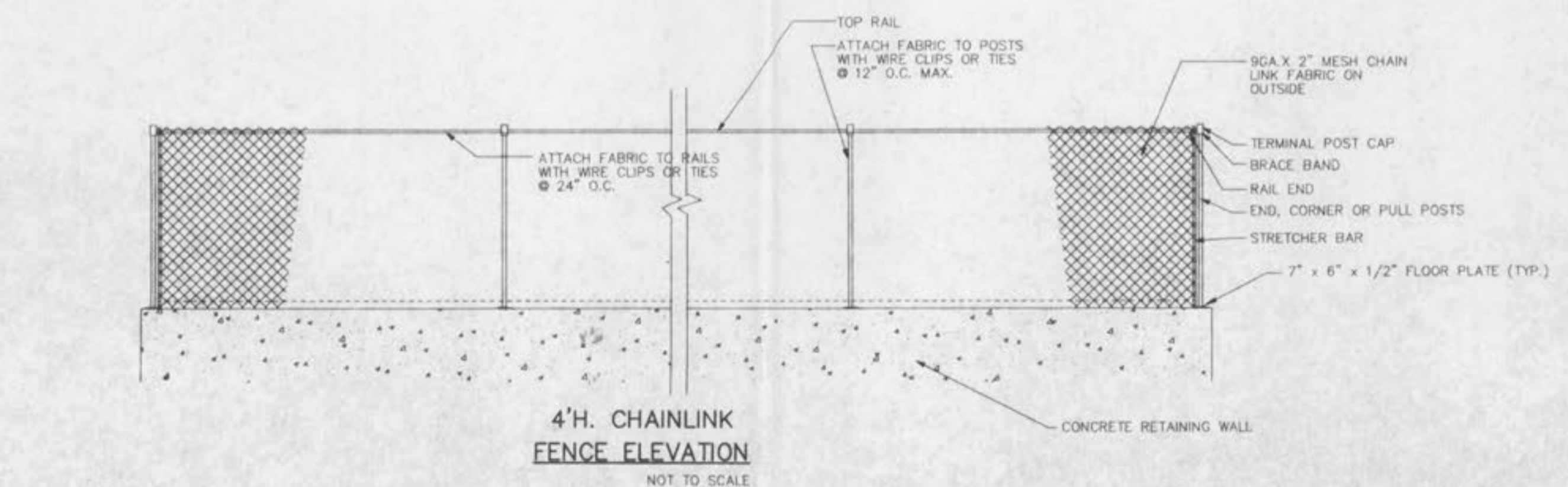
**SECTION OF PARKING LOT WALL**  
NOT TO SCALE



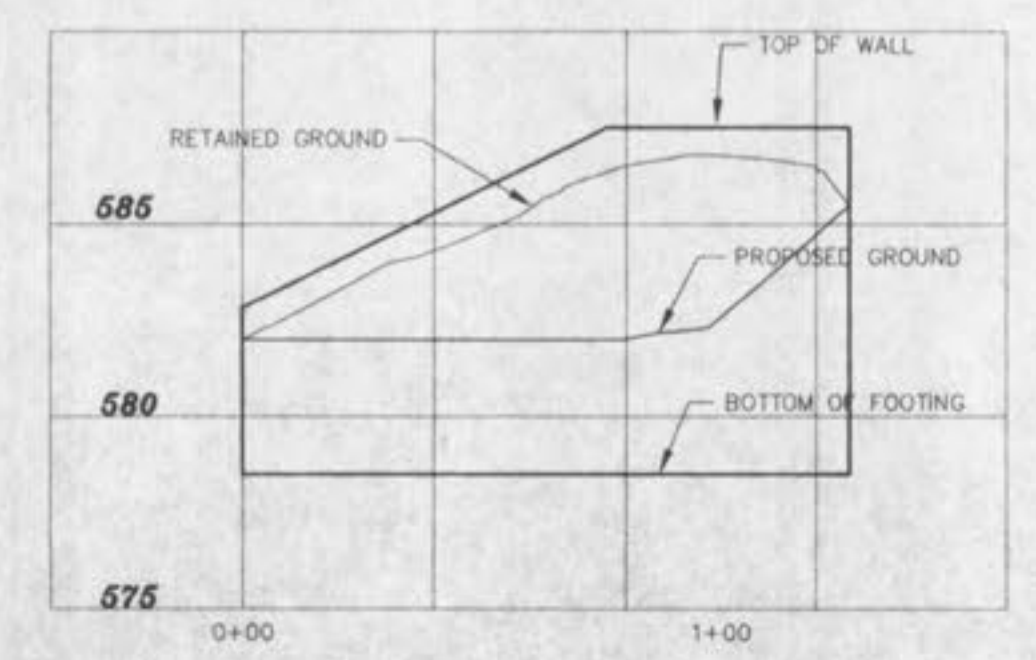
**SECTION OF BASIN WALL**  
NOT TO SCALE



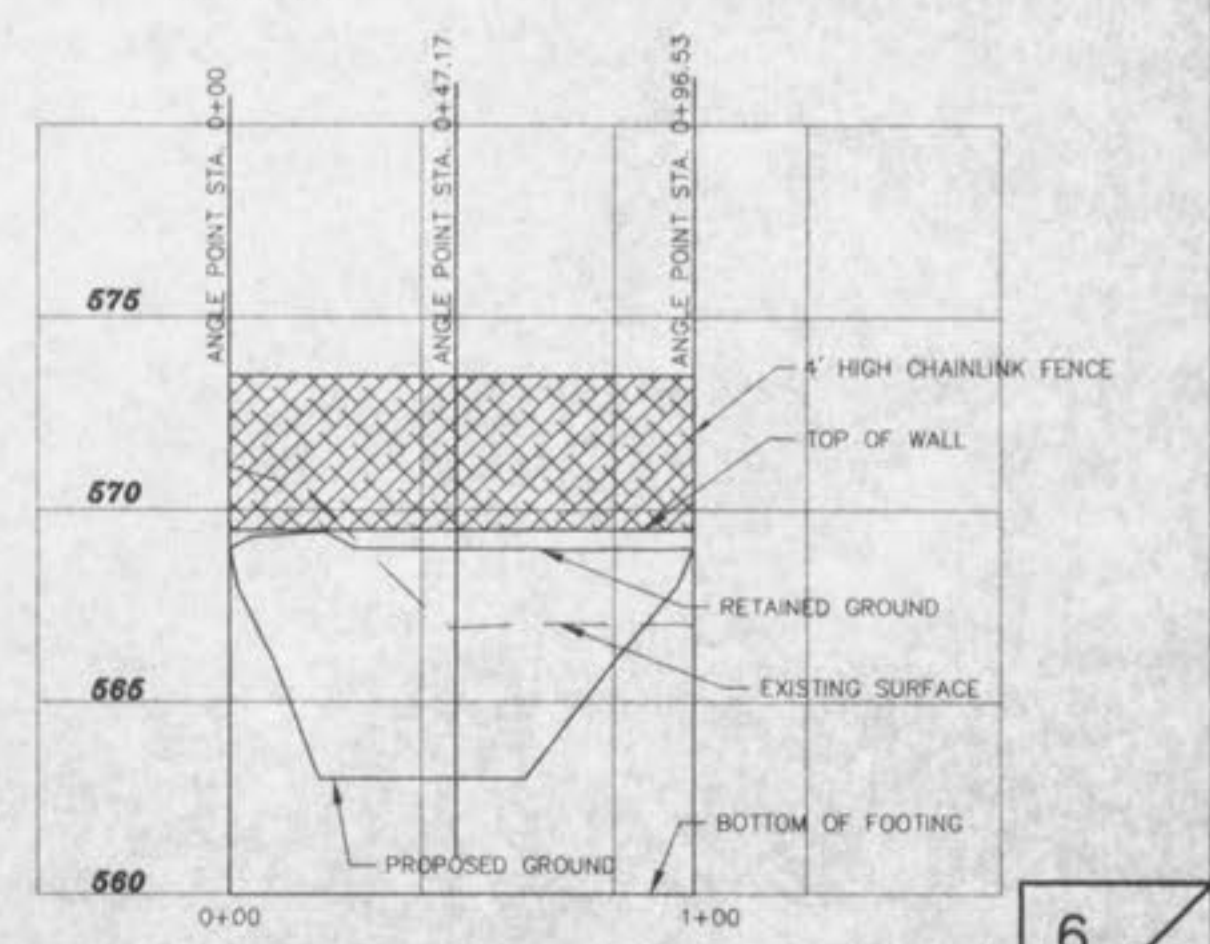
**SECTION OF BASIN WALL**  
NOT TO SCALE



**4'H. CHAINLINK FENCE ELEVATION**  
NOT TO SCALE



**WALL AT PARKING LOT**



**DETENTION BASIN WALL**