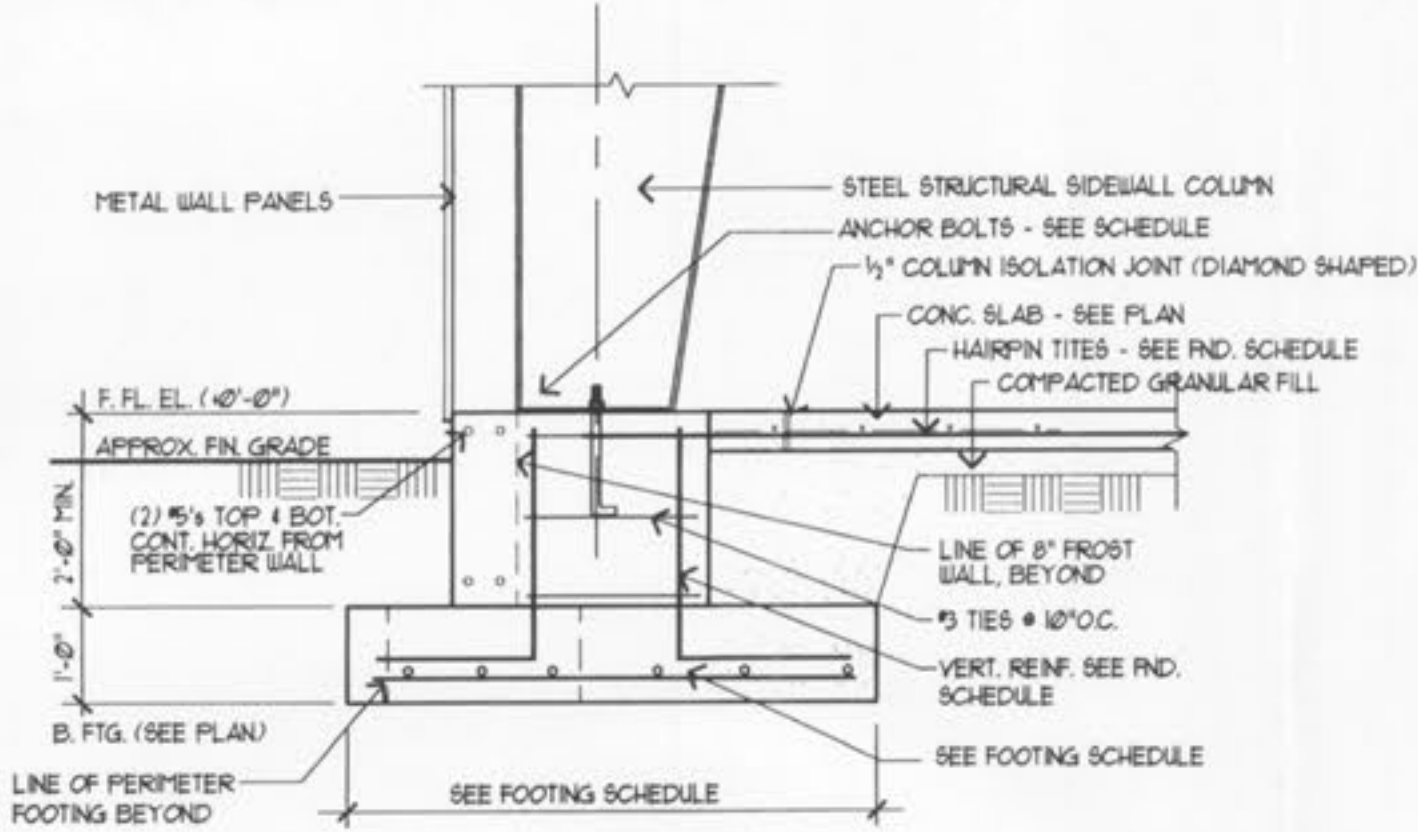


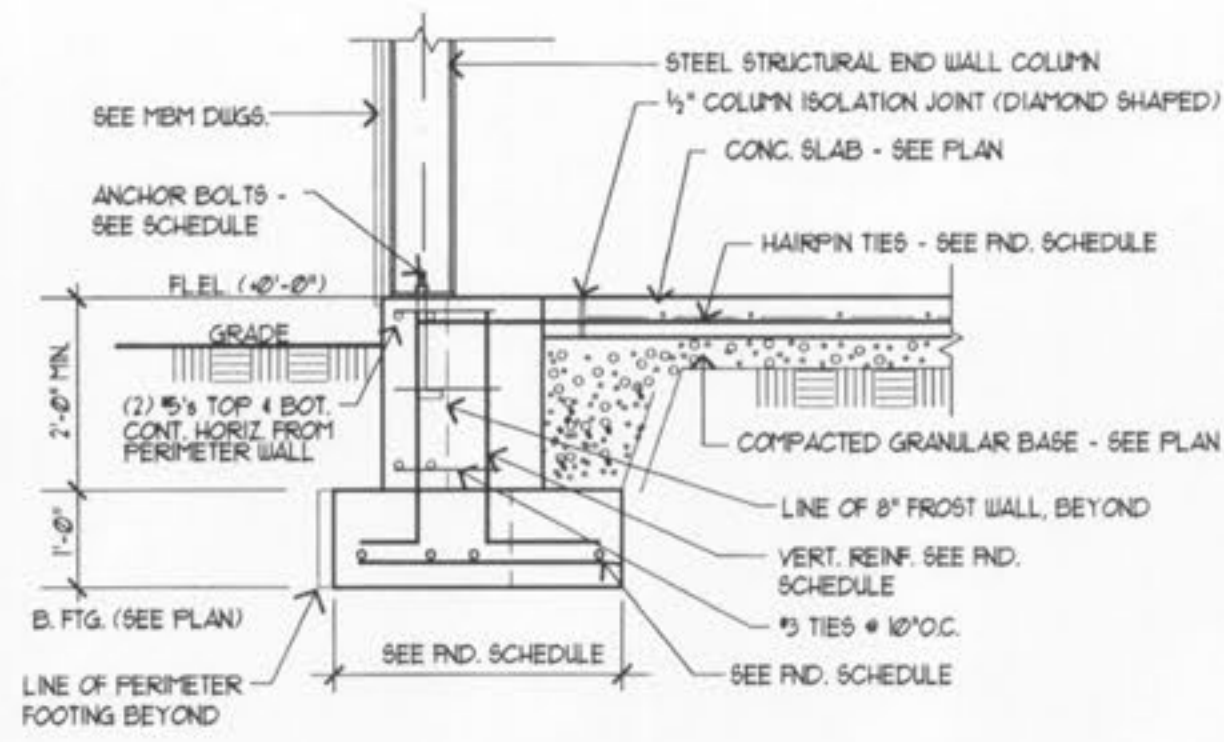
**1 SEC. @ PERIMETER FOUNDATION**

8/1/82 SCALE: 1/2"=1'-0"



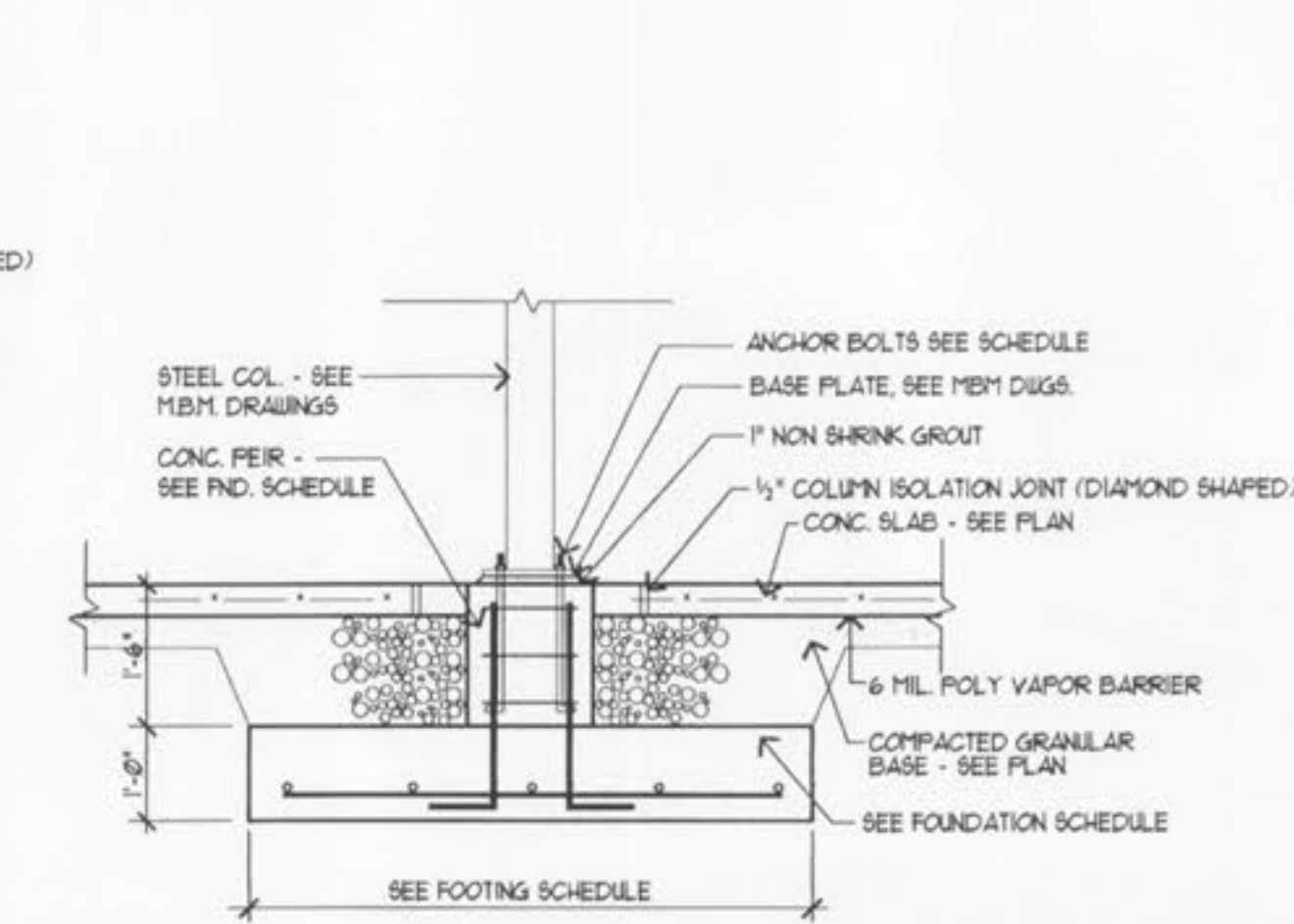
**3 SECTION AT SIDEWALL COLUMNS**

8/1/82 SCALE: 1/2"=1'-0"



**2 SECTION AT END WALL COLUMNS**

8/1/82 SCALE: 1/2"=1'-0"



**4 SECTION @ INTERIOR COLUMNS**

8/1/82 SCALE: 1/2"=1'-0"

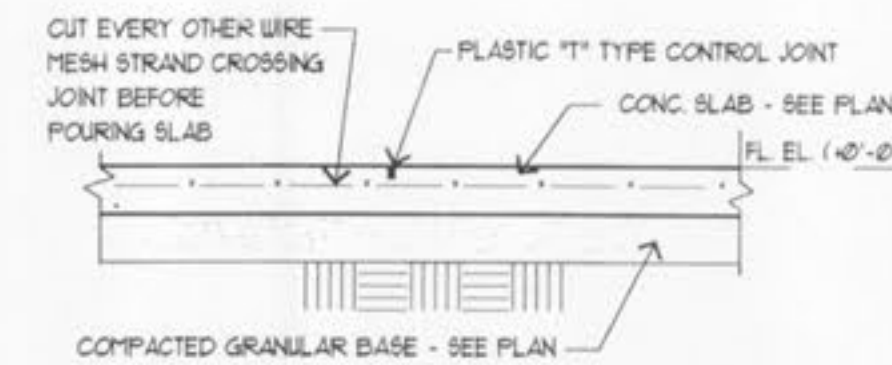
FOUNDATION SCHEDULE							
MARK	FOOTING SIZE	FOOTING REIN.	BOT. FTG.	PIER SIZE	PIER REIN.	ANCHOR BOLTS - (ASMT MINIMUM)	HAIRPINS / NOTES
A	5'-0" x 5'-0" x 1'-0"	(5) - #5 EEL BOT.	SEE PLAN	12"x24"	(4) - #5 VERT w/ #5 TIES @ 18"	18" x 3" HOOK - SEE VENDOR SPECS FOR DIAMETER, QUANTITY AND LOCATION	NO HAIRPINS REQ'D TOP / PIER + FIN FLOOR ELEV.
B	5'-0" x 5'-0" x 1'-0"	(5) - #5 EEL BOT.	SEE PLAN	12"x16"	(6) - #5 VERT w/ #5 TIES @ 18"	18" x 3" HOOK - SEE VENDOR SPECS FOR DIAMETER, QUANTITY AND LOCATION	4 x 4 FT HAIRPINS w/ 3" HOOKS / TOP PIER + FIN FLOOR ELEV.
C	5'-0" x 5'-0" x 1'-0"	(5) - #5 EEL BOT.	SEE PLAN	12"x24"	(4) - #5 VERT w/ #5 TIES @ 18"	18" x 3" HOOK - SEE VENDOR SPECS FOR DIAMETER, QUANTITY AND LOCATION	4 x 4 FT HAIRPINS w/ 3" HOOKS / TOP PIER + FIN FLOOR ELEV.
D	5'-0" x 5'-0" x 1'-0"	(5) - #5 EEL BOT.	SEE PLAN	12"x24"	(4) - #5 VERT w/ #5 TIES @ 18"	18" x 3" HOOK - SEE VENDOR SPECS FOR DIAMETER, QUANTITY AND LOCATION	4 x 4 FT HAIRPINS w/ 3" HOOKS / TOP PIER + FIN FLOOR ELEV.
E	3'-0" x 3'-0" x 1'-0"	(3) - #5 EEL BOT.	SEE PLAN	12"x24"	(4) - #5 VERT w/ #5 TIES @ 18"	18" x 3" HOOK - SEE VENDOR SPECS FOR DIAMETER, QUANTITY AND LOCATION	4 x 4 FT HAIRPINS w/ 3" HOOKS / TOP PIER + FIN FLOOR ELEV.

NOTE: VERIFY ALL ANCHOR BOLT, PIER LOCATIONS & SIZES WITH METAL BLDG. MNF. BEFORE FND. WORK BEGINS

NOTE: INTERIOR COLUMNS HAVE NO HAIRPIN TIES.

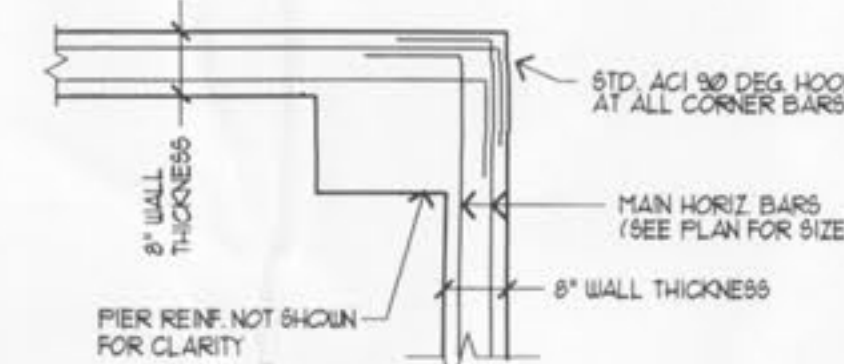
NOTE: COORDINATE SIZE OF PIERS W/ AB. DETAILS

NOTE: ALL PIERS TO HAVE #5 TIES @ 18" O.C. AROUND MAIN VERT. REINF. BARS.



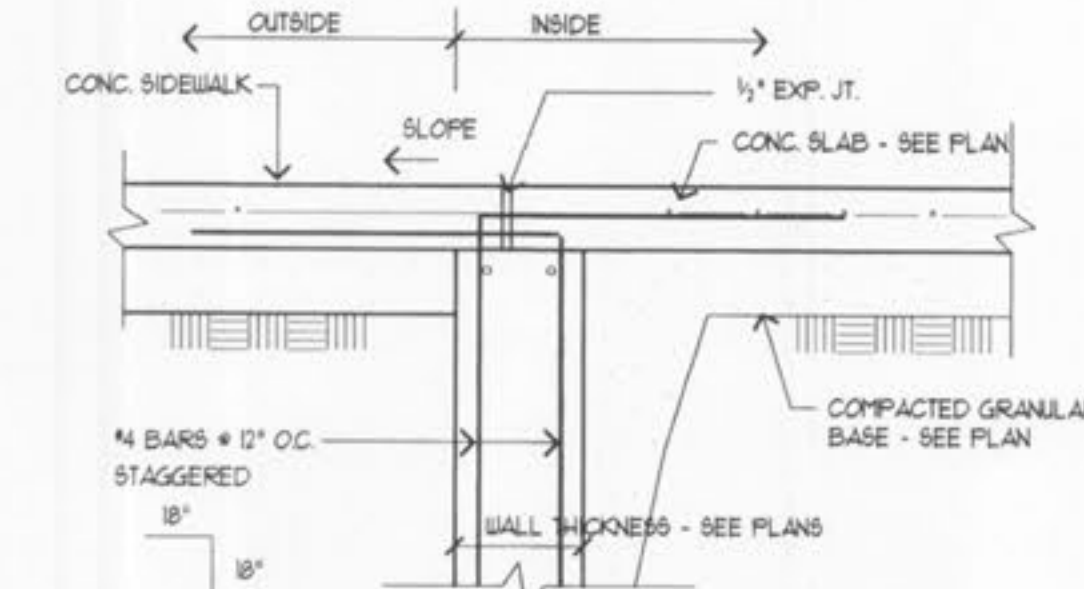
**5 SECT. @ FLOOR C.J.**

8/1/82 SCALE: 1/2"=1'-0"



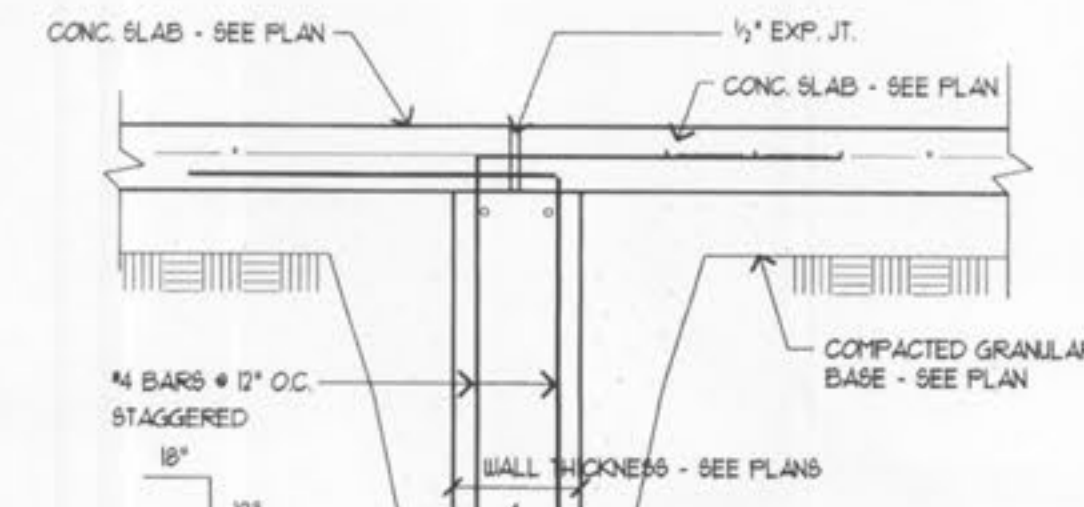
**6 SECTION @ FDN. CORNER**

8/1/82 SCALE: 1/2"=1'-0"



**7 SECTION @ DOOR HOLD DOWNS**

8/1/82 SCALE: 1/2"=1'-0"



**8 SECTION @ CONN. CORRIDOR**

8/1/82 SCALE: 1/2"=1'-0"

**STRUCTURAL STRAIN ENGINEERING**  
42 ROLAND DRIVE  
SAINT PETERS, MO 63376  
CONTACT: JOE STRAIN, P.E.  
PHONE (314) 978-9459  
FAX (314) 978-9459

**LePIQUE & ORNE ARCHITECTS, INC.**  
ESTABLISHED 1916  
423 JACKSON STREET, SAINT CHARLES, MO 63301  
PHONE (636) 947-0099 FAX (636) 947-8700  
CONTACT: RON POWELL E-mail: rpowell@andorarchitects.com

NEW FACILITY FOR  
**WILLERDING WELDING**  
NORTH I-70 SERVICE ROAD, O'FALLON, MO 63366  
QUALITY BUILDING SYSTEMS - G.C.

PROJECT NUMBER  
00-097  
DATE  
12-6-00

SHEET  
**S-2**  
FOUNDATION  
DETAILS &  
SCHEDULE