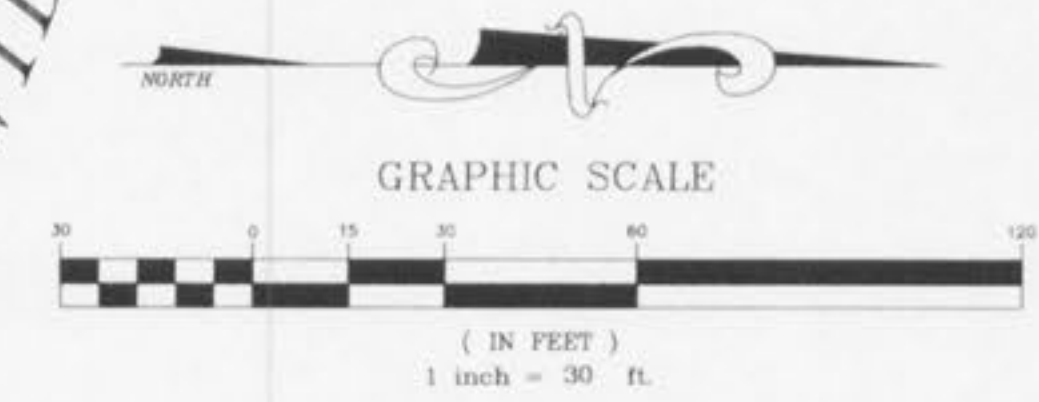
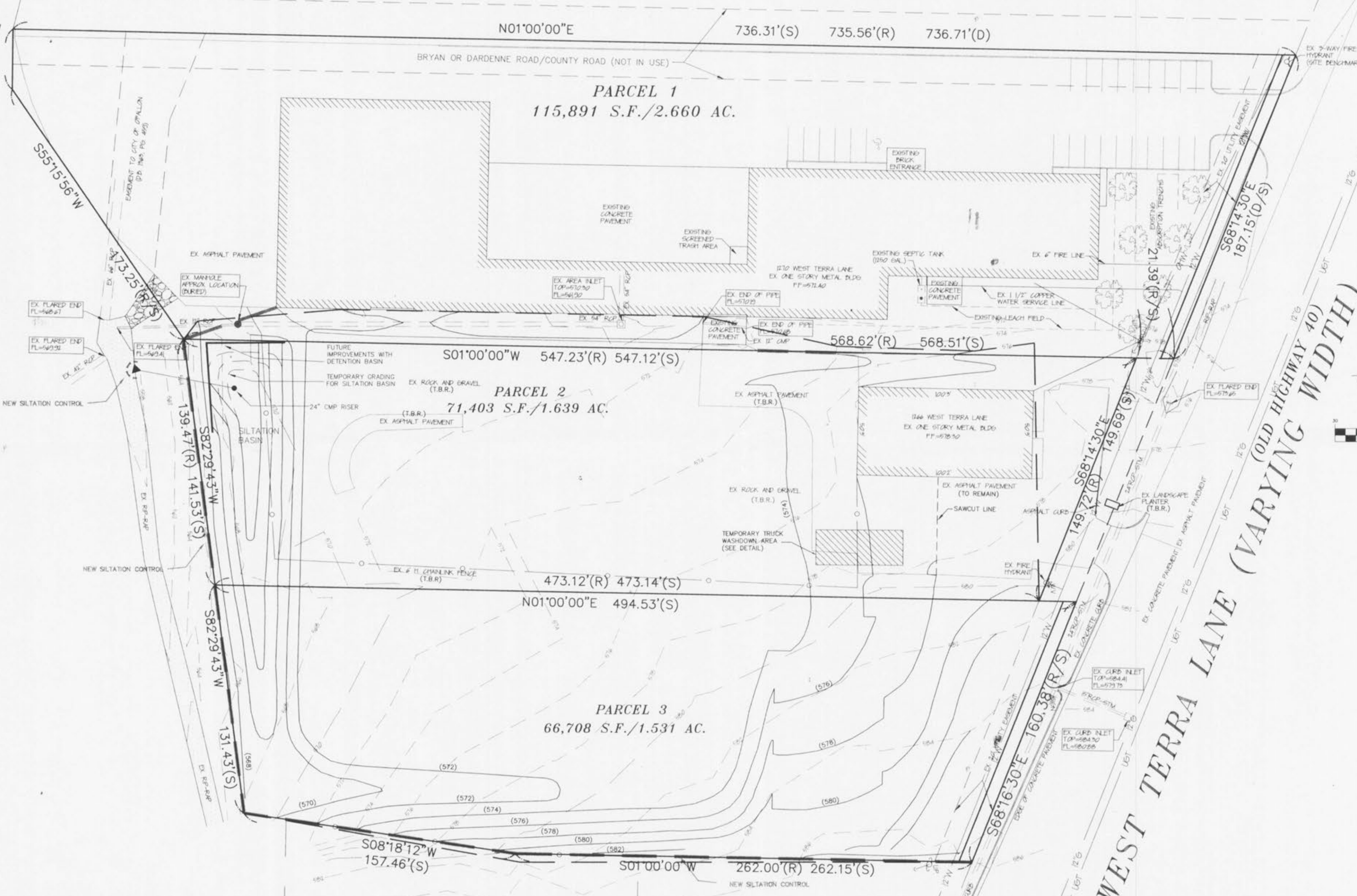


N89°28'31"W  
 34.51'(R)  
 35.38'(D)  
 34.41'(S)

INTERSTATE HIGHWAY 70 (VARYING WIDTH)



WEST TERRA LANE (VARYING WIDTH)  
 (OLD HIGHWAY 40)

UNAPPROVED PLANS  
 SUBJECT TO CHANGE

E:\proj\1-2999\2987a-will\dwg\grading\construction\2987a.dwg Thu Nov 30 15:13:14 2000 514.8