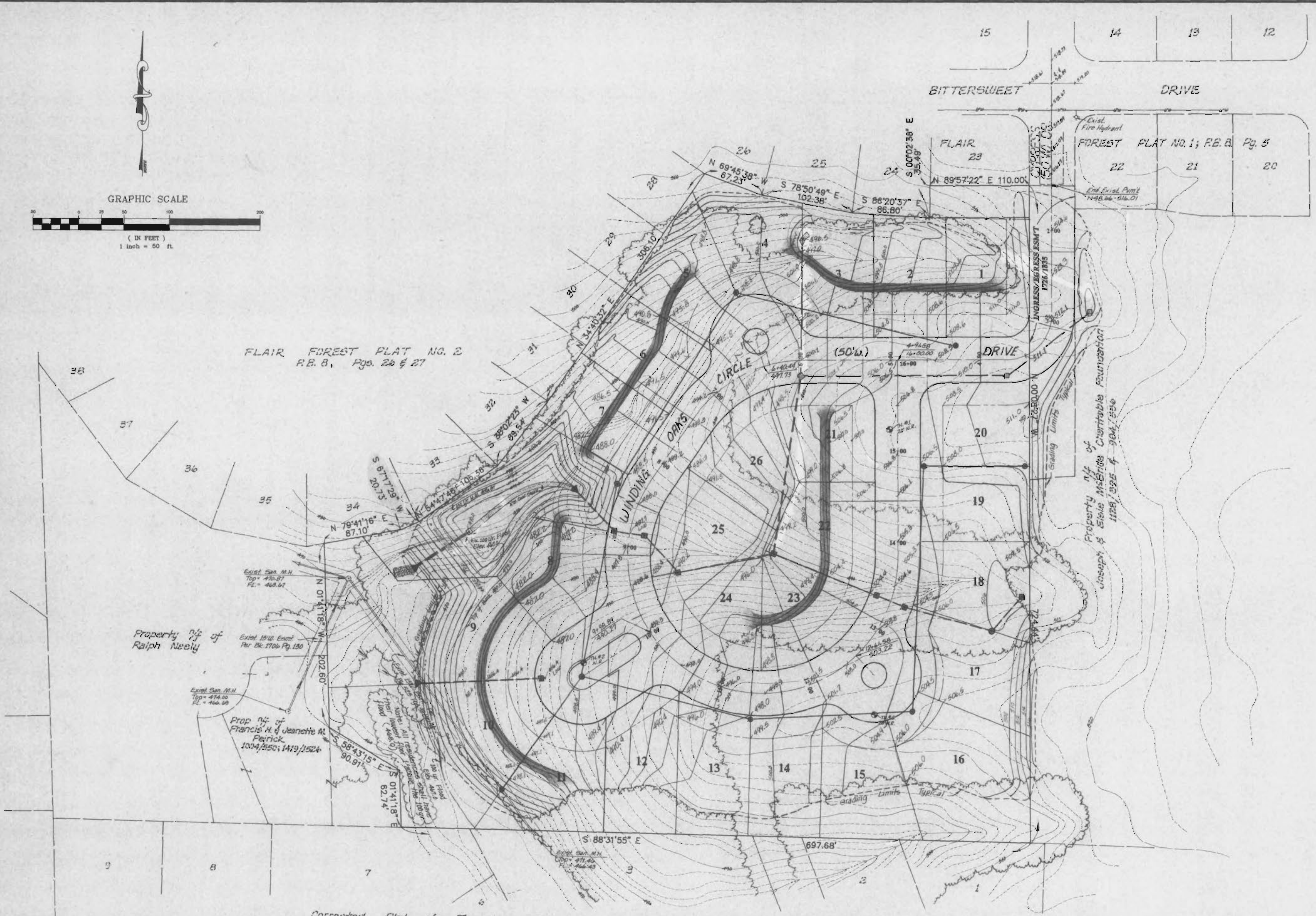
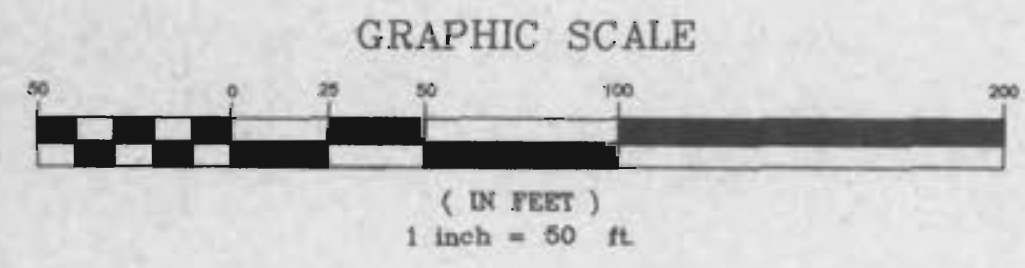


**WINDING OAKS
GRADING PLAN**

APRIL 4, 1995 94-1471



FLAIR FOREST PLAT NO. 2
R.B. 8, Pgs. 26 & 27

Property of
Ralph Neely

Prop. of
Francis N. & Jeanette M.
Patrick
1004, 1550, 1419, 1524

Corrected Plat of Towering Oaks ; R.B. 13, Pg. 32

Property of
Elsie McBride
Joseph & Elsie McBride
Charitable Foundation
1128, 1325 & 1347, 1558

REVISED - 5/31/95	SHEET 3 OF 12
	ST. CHARLES ENGINEERING & SURVEYING
	801 S. FIFTH STREET, SUITE 202
	ST. CHARLES, MO 63301
	TEL: (314) 947-0607 FAX: (314) 947-2448
ORDER NO. 94-1471	DATE 4/4/95