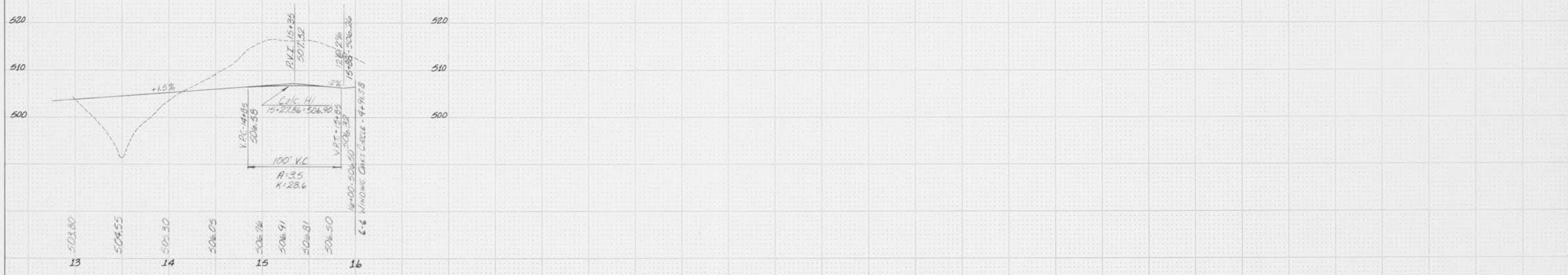
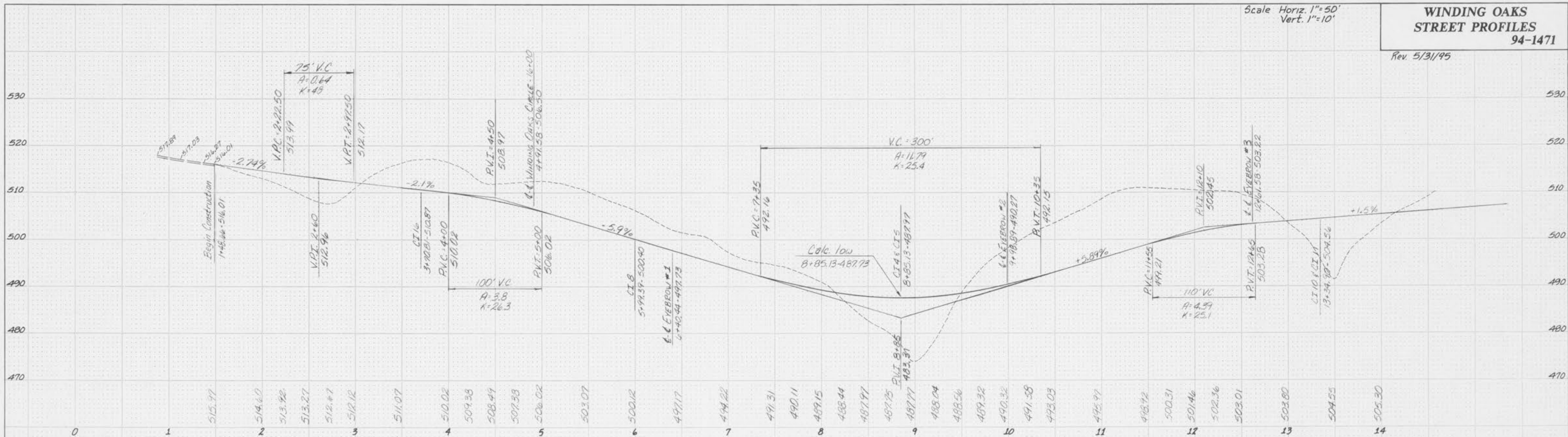


**WINDING OAKS STREET PROFILES**  
94-1471

Rev. 5/31/95

Scale Horiz. 1"=50'  
Vert. 1"=10'



FINAL SURVEY	BY	DATE
REVISIONS		
NO. 1		
NO. 2		
NO. 3		
NO. 4		
NO. 5		
NO. 6		
NO. 7		
NO. 8		
NO. 9		
NO. 10		
NO. 11		
NO. 12		
NO. 13		
NO. 14		
NO. 15		
NO. 16		
NO. 17		
NO. 18		
NO. 19		
NO. 20		

ORIGINAL SURVEY	BY	DATE
REVISIONS		
NO. 1		
NO. 2		
NO. 3		
NO. 4		
NO. 5		
NO. 6		
NO. 7		
NO. 8		
NO. 9		
NO. 10		
NO. 11		
NO. 12		
NO. 13		
NO. 14		
NO. 15		
NO. 16		
NO. 17		
NO. 18		
NO. 19		
NO. 20		