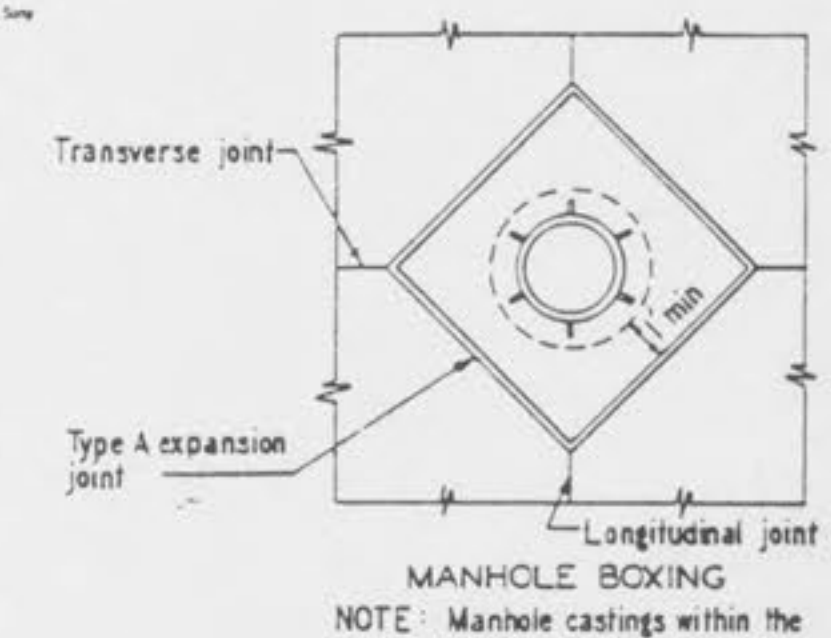
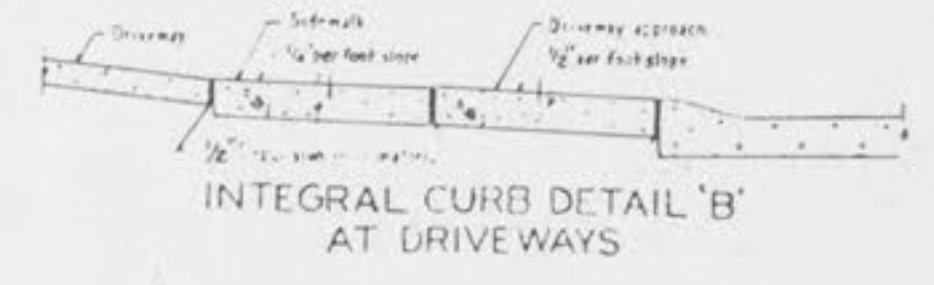
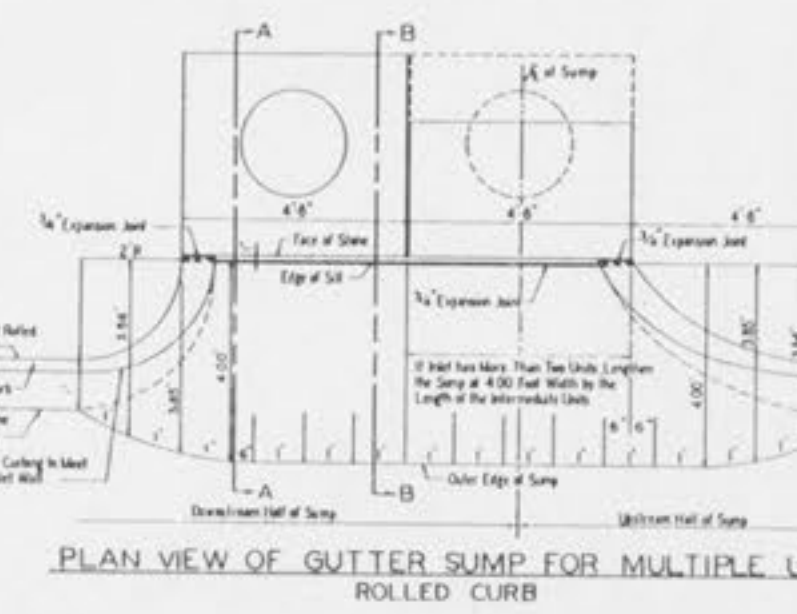
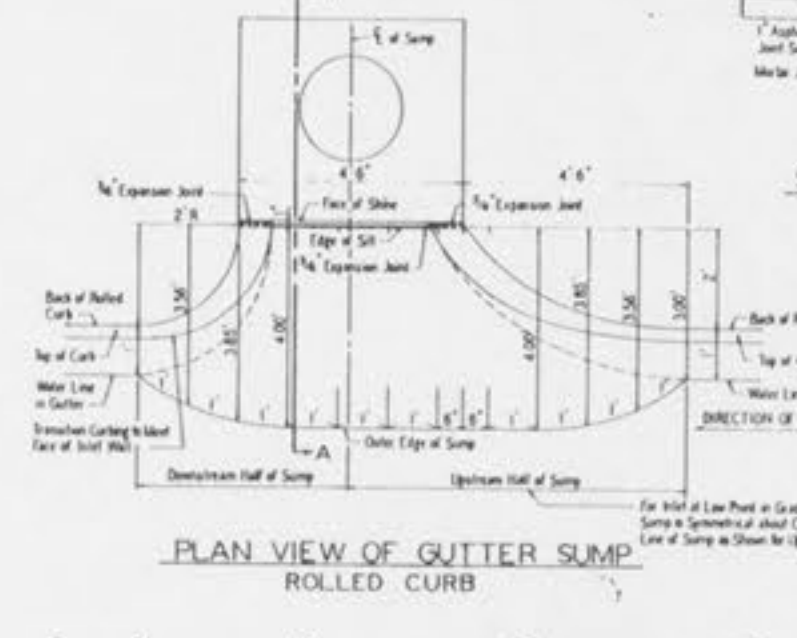
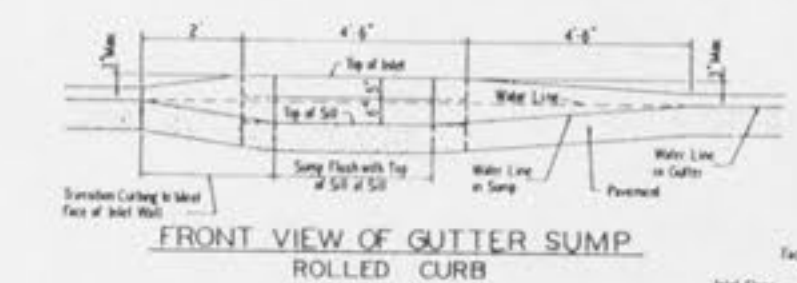
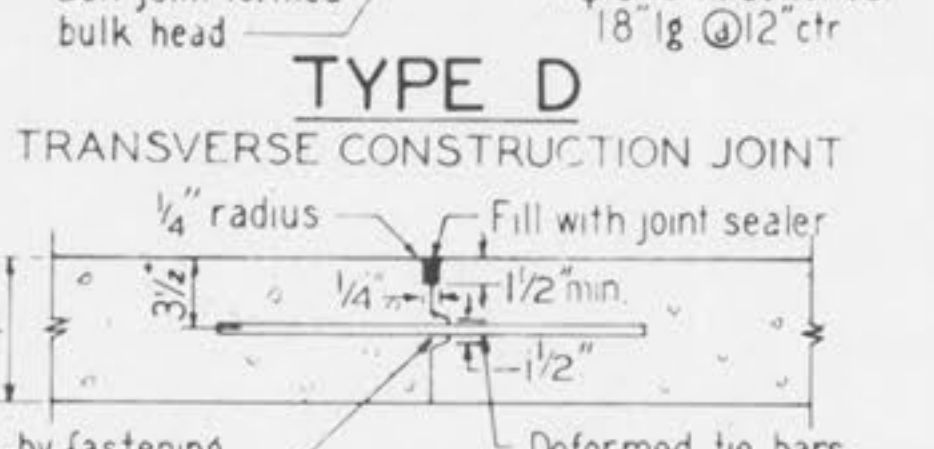
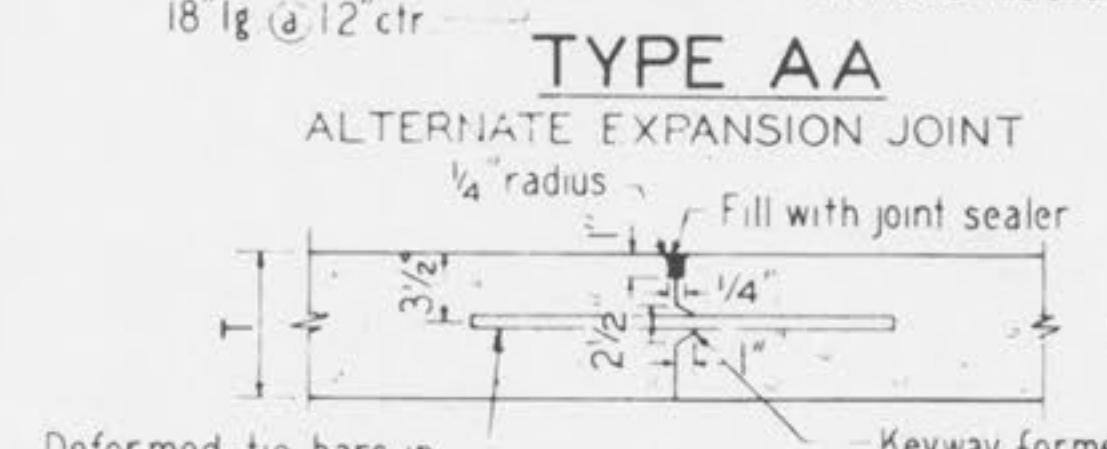
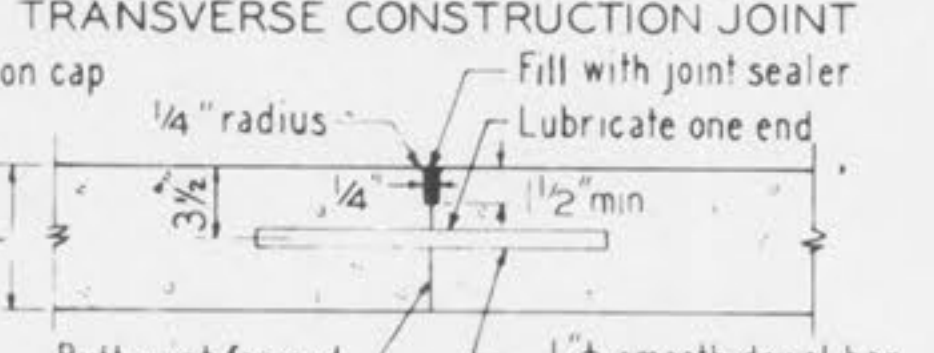
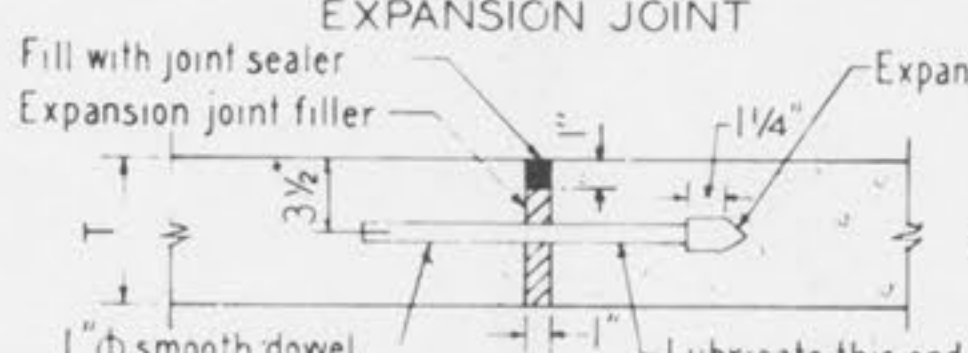
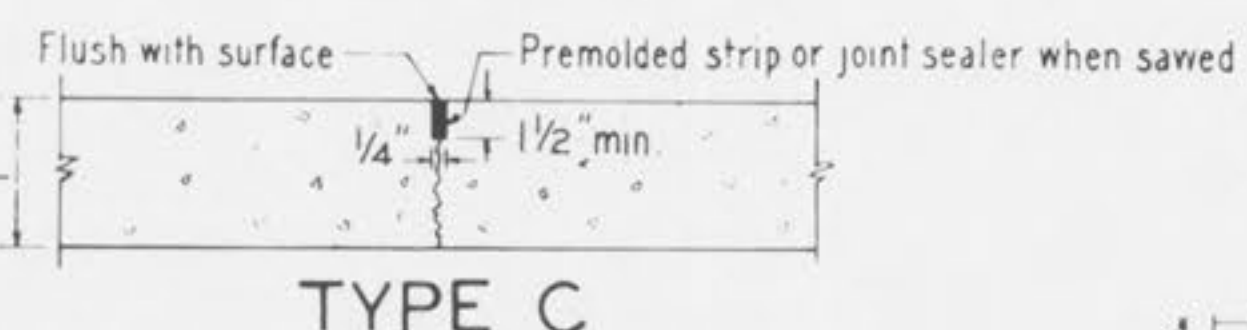
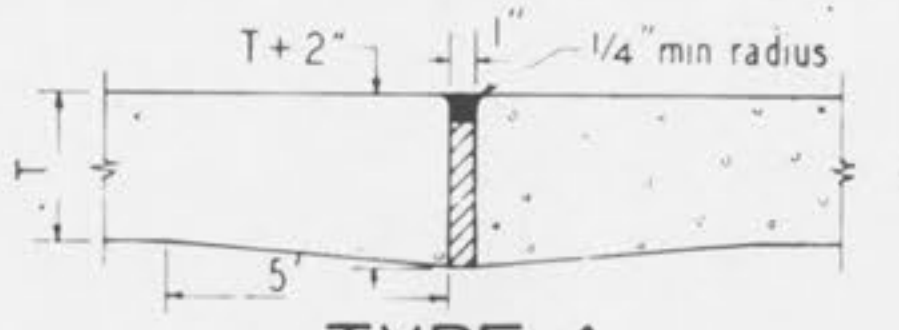
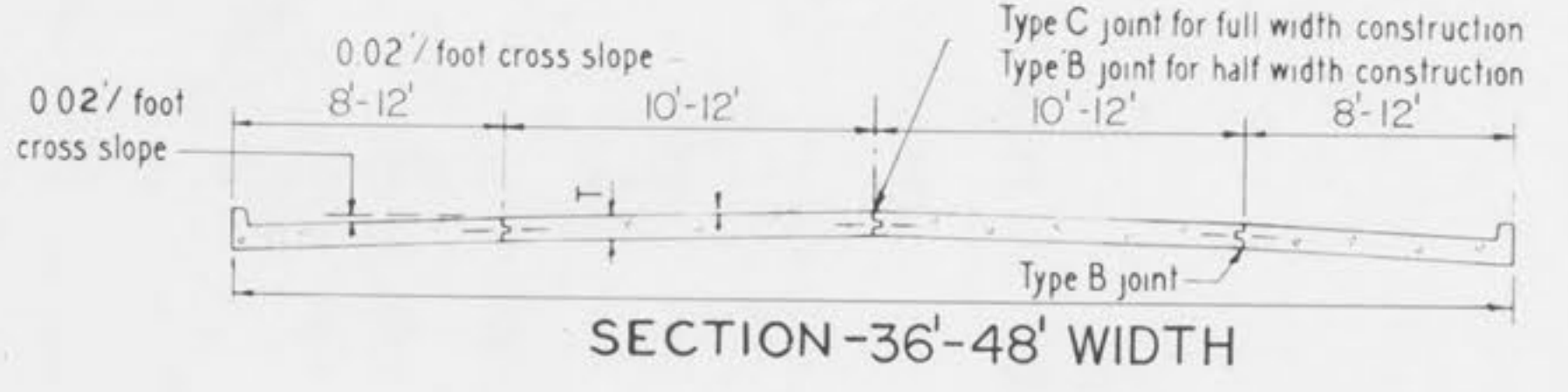
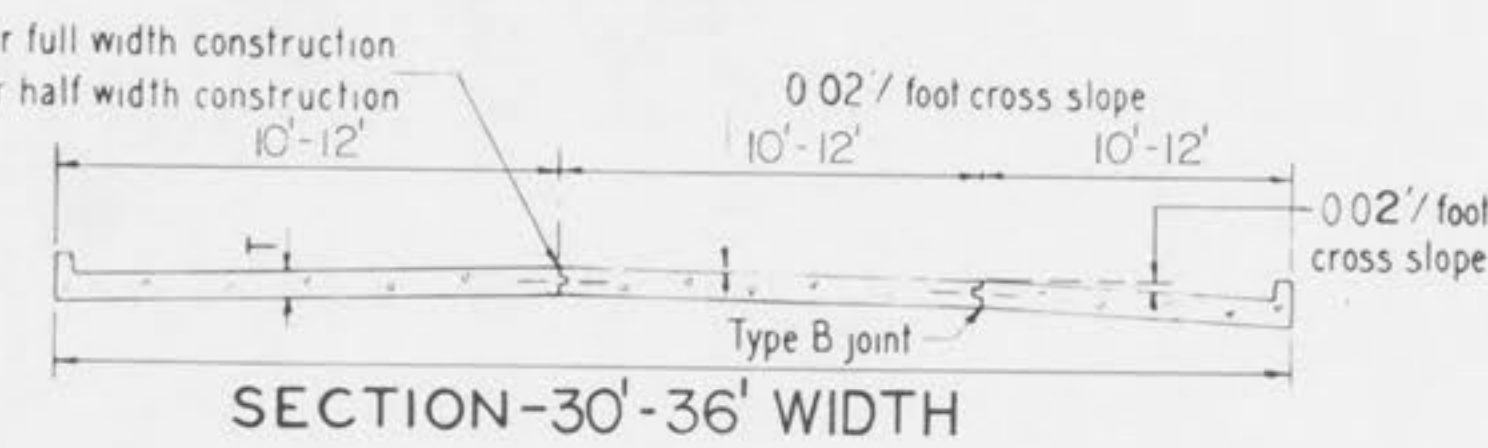
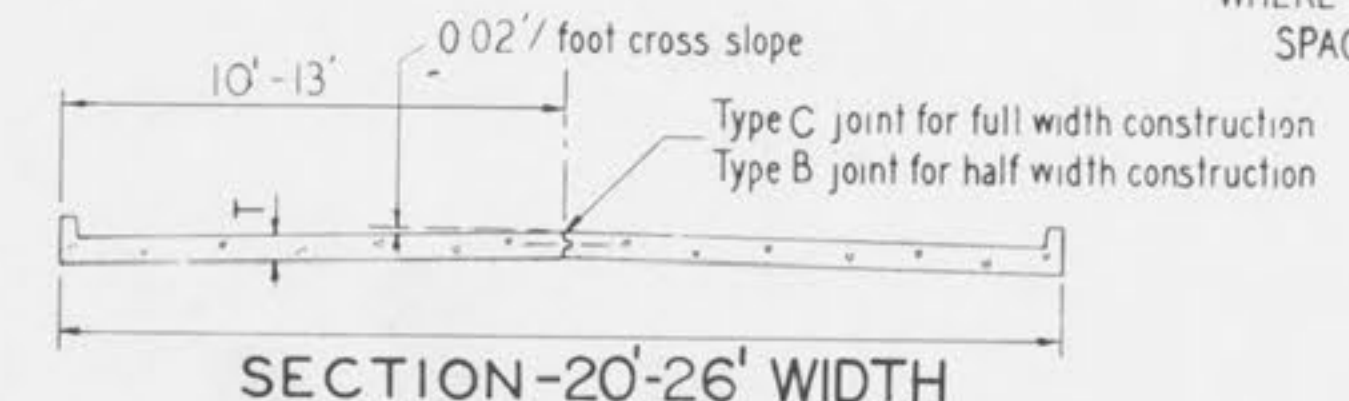
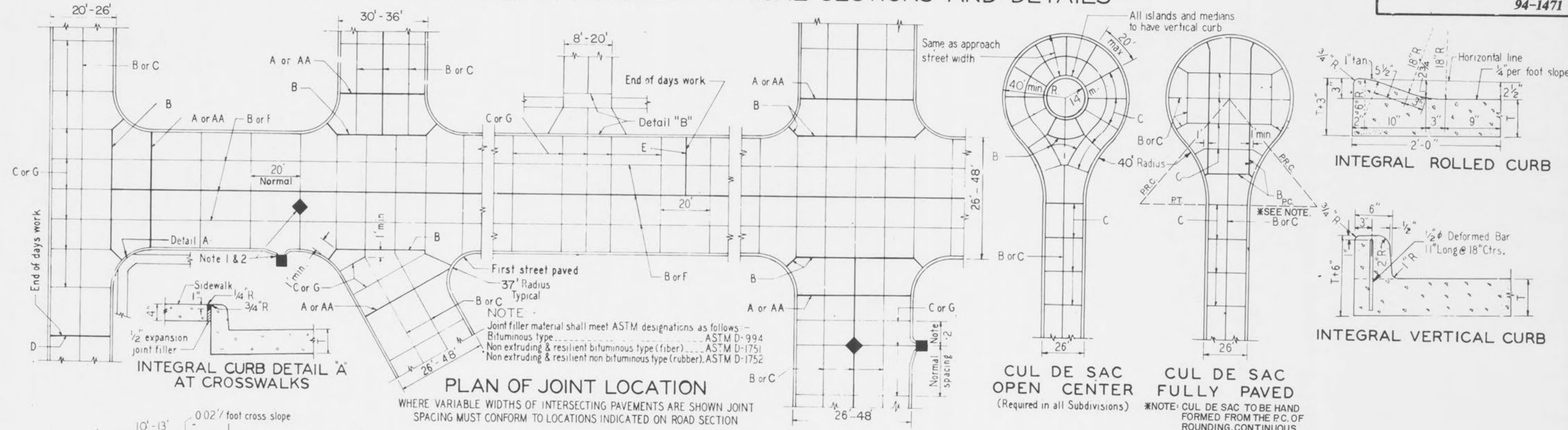


INTEGRAL CURB PAVEMENT TYPICAL SECTIONS AND DETAILS



5) Minimum Thickness for Pavement is:

CONCRETE (T)	THICKNESS
Local or Minor Streets	6"
Major or Industrial Streets	7"
Arterial or Industrial Streets	8"

Base material under 7" or 8" Concrete Pavement will be made with 4" Type 1 Aggregate Sub-Base.

- General Notes:
- All catch basins shall be separated from the pavement and curb by expansion joint material extending completely through curb and slab. Manhole castings within the pavement limits shall be boxed as shown in the "Sewer Construction Details".
 - When a joint falls within 5 ft. of or contacts basins, manholes, or other structures, shorten one or more panels either side of opening to permit joint to fall on round structures and at or between corners of rectangular structures.
 - Driveway configurations are shown in the "Entrance Construction Details".
 - Construction joint and dowel bars may be omitted when curb is poured integral with pavement.