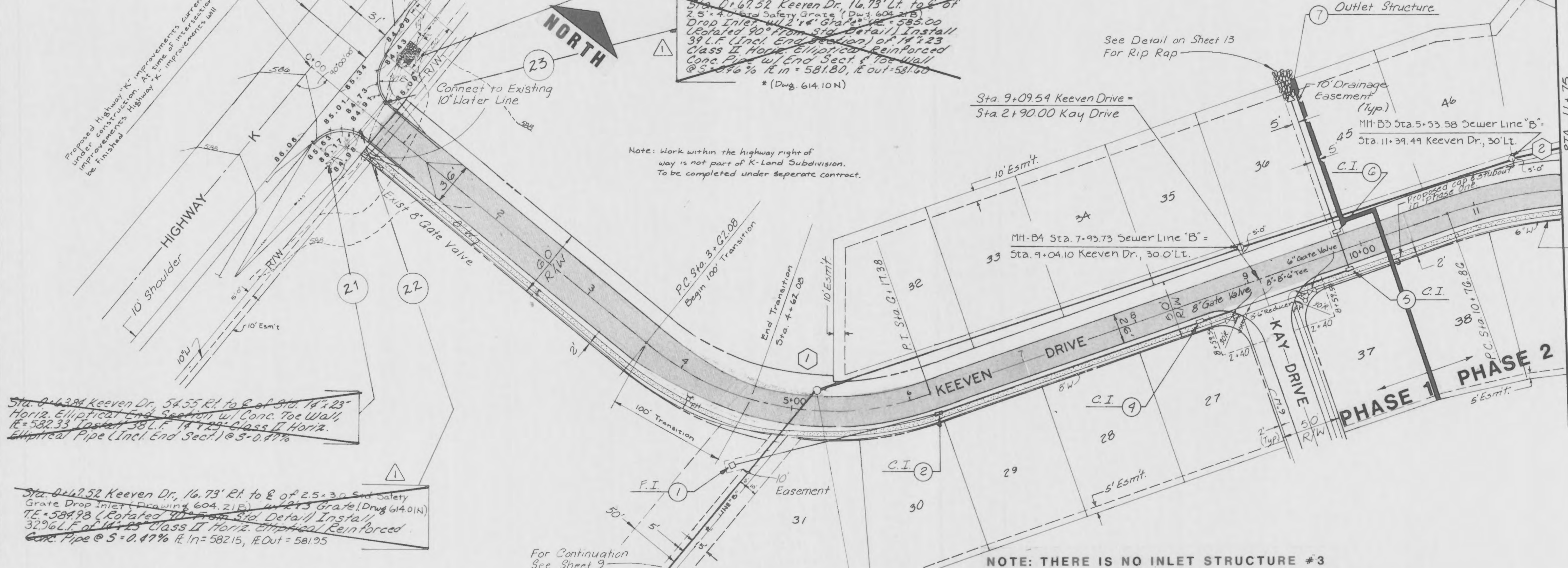


Hwy Sta. 61+63.28
Missouri Route "K"
Sta. 0+00 Keeven Drive

Proposed Highway "K" improvements currently under construction. At time of this station, be finished. Highway "K" improvements will be finished.



Sta. 0+63.84 Keeven Dr. 54.55' Rt. to E. of Sta. 14+23. Horiz. Elliptical End Section w/ Conc. Toe Wall, $\Delta = 582.33$, Install 38" L.F. 14" x 23" Class II Horiz. Reinforced Concrete Pipe (Incl. End Sect.) @ 5.047%

Sta. 0+62.52 Keeven Dr. 16.73' Rt. to E. of 2.5 x 30" Std. Safety Grate Drop Inlet (Drawing 604.21E) in 24" Grate (Draw 614.01N) $\Delta = 584.98$ (Rotated 90° from Sid. Detail) Install 32' L.F. of 14" x 23" Class II Horiz. Reinforced Concrete Pipe @ 5.047% $\Delta = 582.15$, $\Delta = 581.95$

Sta. 0+56.10 Keeven Dr. 54.11' Rt. to E. of Sta. 14+23. Horiz. Elliptical End Section w/ Conc. Toe Wall, $\Delta = 581.42$

Sta. 0+67.52 Keeven Dr. 16.73' Lt. to E. of 2.5 x 30" Std. Safety Grate (Draw 604.21E) in 24" Grate (Draw 614.01N) $\Delta = 585.00$ (Rotated 90° from Sid. Detail) Install 32' L.F. (Incl. End Section) of 14" x 23" Class II Horiz. Reinforced Concrete Pipe w/ End Sect. @ 5.047% $\Delta = 581.80$, $\Delta = 581.80$ * (Draw 614.10N)

Note: Work within the highway right of way is not part of K-Land Subdivision. To be completed under separate contract.

NOTE: THERE IS NO INLET STRUCTURE #3

GBA GEORGE BUTLER ASSOCIATES, INC. Engineers / Architects / Landscape Architects / Planners	PROJECT	SHEET NO.	TOTAL SHEETS
	K-LAND STREET PLAN AND PROFILE	6	15
	PROJECT NO.: 4576	DATE: 8-27-87	

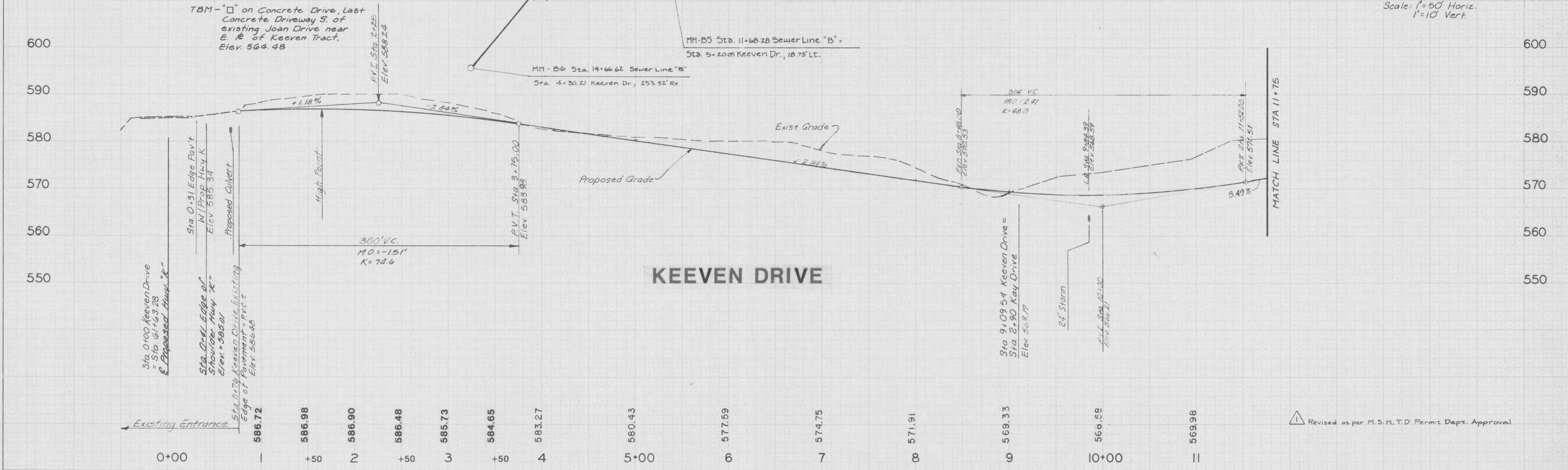
1 CURVE DATA
 P.I. Sta 5+02.09
 $\Delta = 58^\circ 31' 47''$
 R 250.00'
 L 255.38'
 T 140.09'

2 CURVE DATA
 P.I. Sta 11+29.56
 $\Delta = 27^\circ 46' 16''$
 R 375.00'
 L 181.76'
 T 92.70'

Waterline to be installed with Phase 2.

For Storm Sewer Profiles See Sheet 10
 For Sanitary Sewer Profiles See Sheets 11+12

Scale: 1" = 50' Horiz.
 1" = 10' Vert.



TBM - "□" on Concrete Drive, Last Concrete Driveway S. of existing Joan Drive near E. of Keeven Tract. Elev. 564.48

Sta. 0+100 Keeven Drive = Sta. 61+63.28
 & Proposed Thruway "K"

Sta. 0+31 Edge Pav't N/Prop Hwy "K" Elev. 585.34
 Proposed Culvert

Sta. 0+70 Keeven Drive Existing Edge of Pavement = P.V.C. Elev. 586.48

KEEVEN DRIVE

Revised as per M.S.H.T.D. Permit Dept. Approval