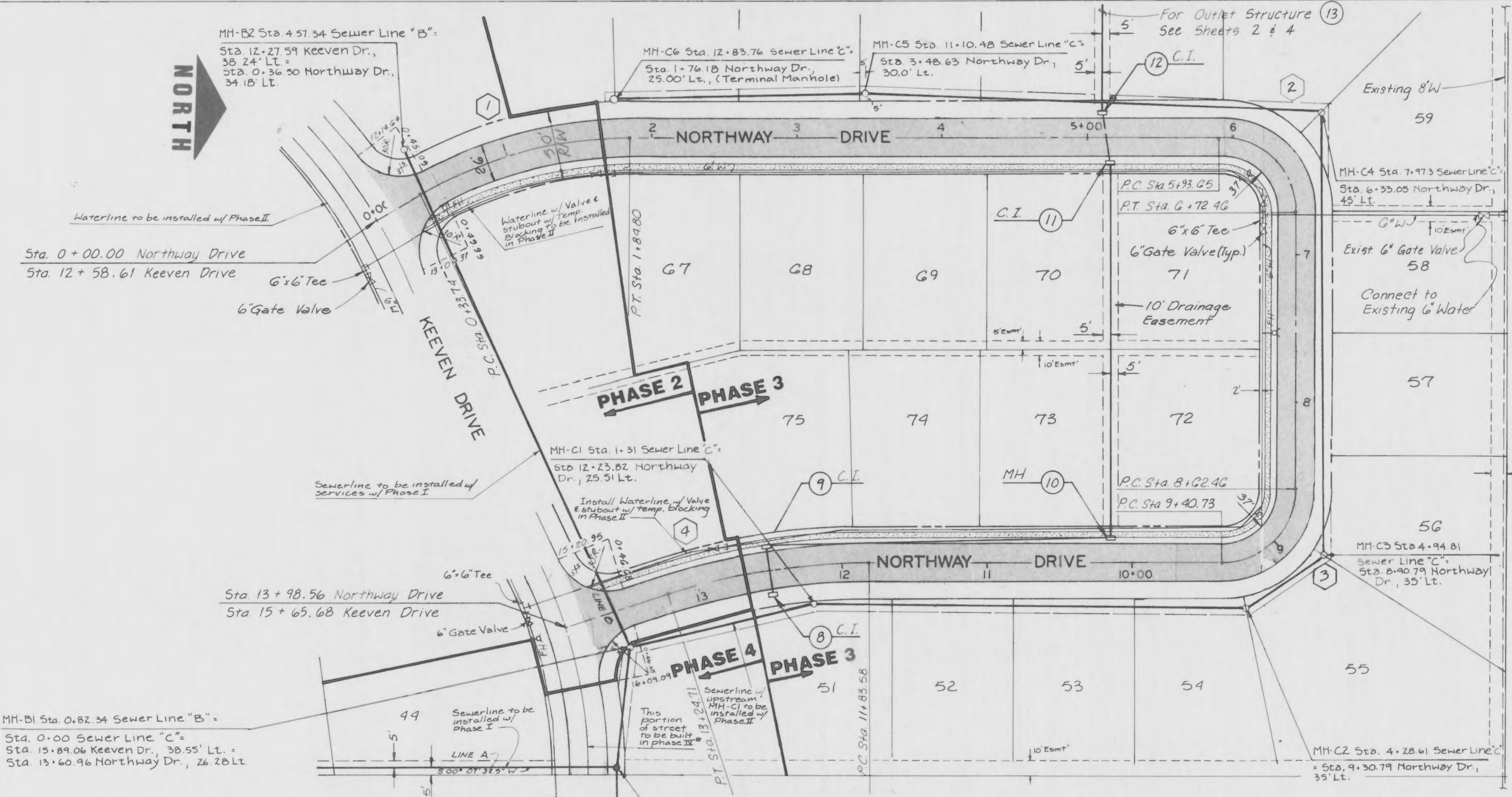




GEORGE BUTLER ASSOCIATES, INC.
Engineers / Architects / Landscape Architects / Planners

PROJECT	SHEET NO.	TOTAL SHEETS
K-LAND STREET PLAN AND PROFILE	8	15
PROJECT NO.: 4576	DATE: 8-27-87	
REVISIONS:		



- ① CURVE DATA
P.I. Sta 1+11.11
Δ 30° 30' 4"
R 283.77'
L 151.06'
T 77.37'
- ② CURVE DATA
P.I. Sta 6+43.91
Δ 90° 18' 18"
R 50.00'
L 78.81'
T 50.27'
- ③ CURVE DATA
P.I. Sta 9+12.19
Δ 89° 41' 42"
R 50.00'
L 78.24'
T 49.74'
- ④ CURVE DATA
P.I. Sta 12+54.73
Δ 17° 58' 10.2"
R 750.00'
L 141.13'
T 71.50'

For Storm Sewer Profiles See Sheet 10
For Sanitary Sewer Profiles See Sheets 11 & 12
Scale: Horiz. 1" = 50'
Vert. 1" = 10'

* This portion of street is the only public improvement to remain for Phase IV Construction.

Tie into Exist G Main

Note: Construct MHA-1 over existing cleanout (see profile). Contractor to verify existing flowline elevation and notify engineer of any discrepancies.

