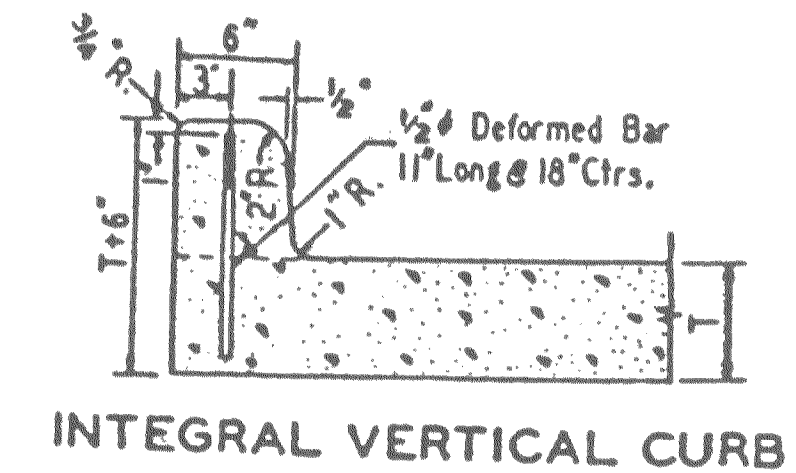
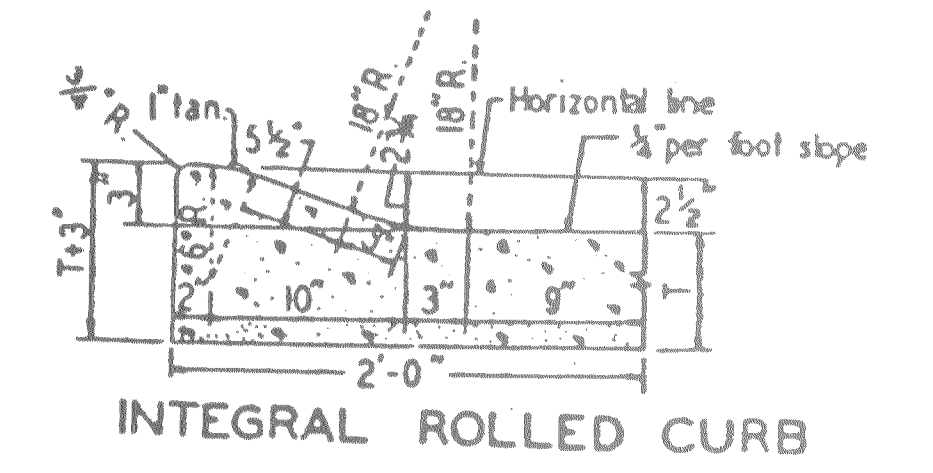


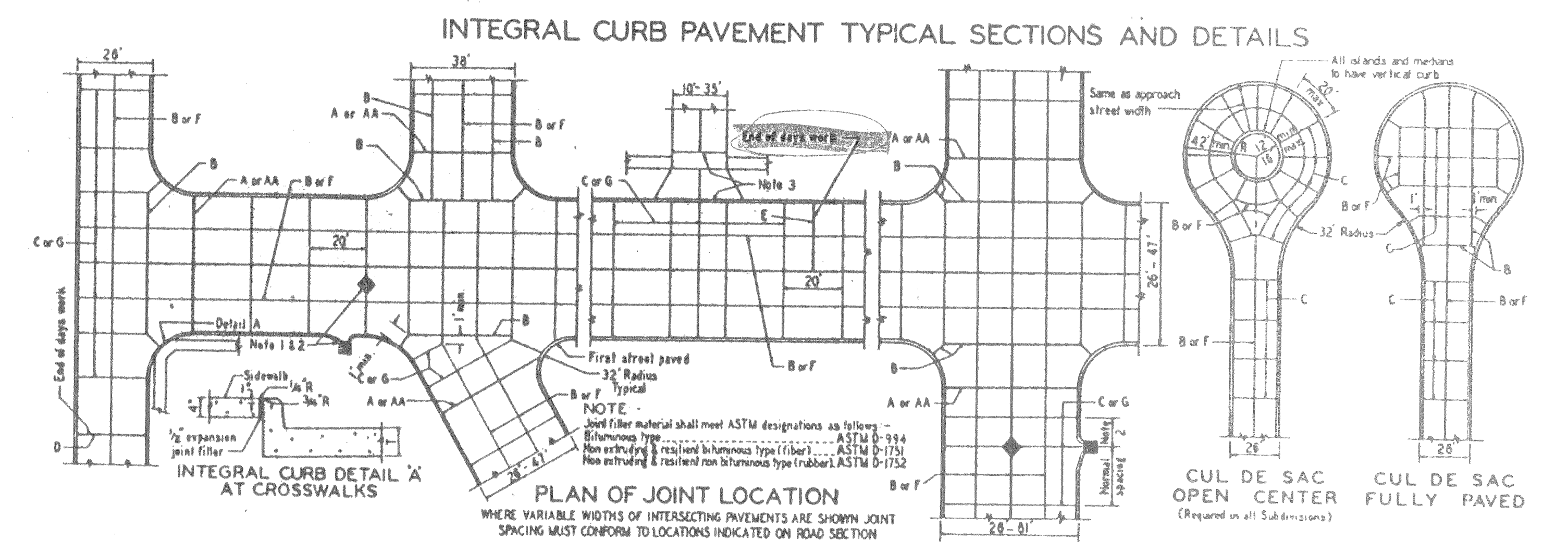
TREE PLANTING DETAIL
 NO SCALE



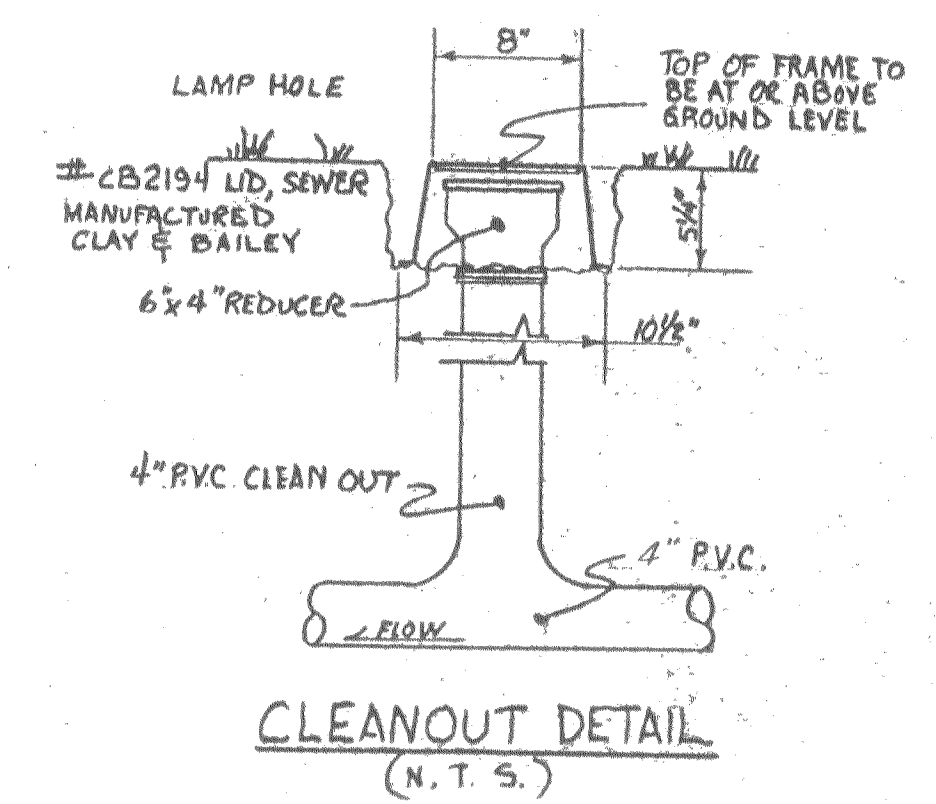
INTEGRAL VERTICAL CURB



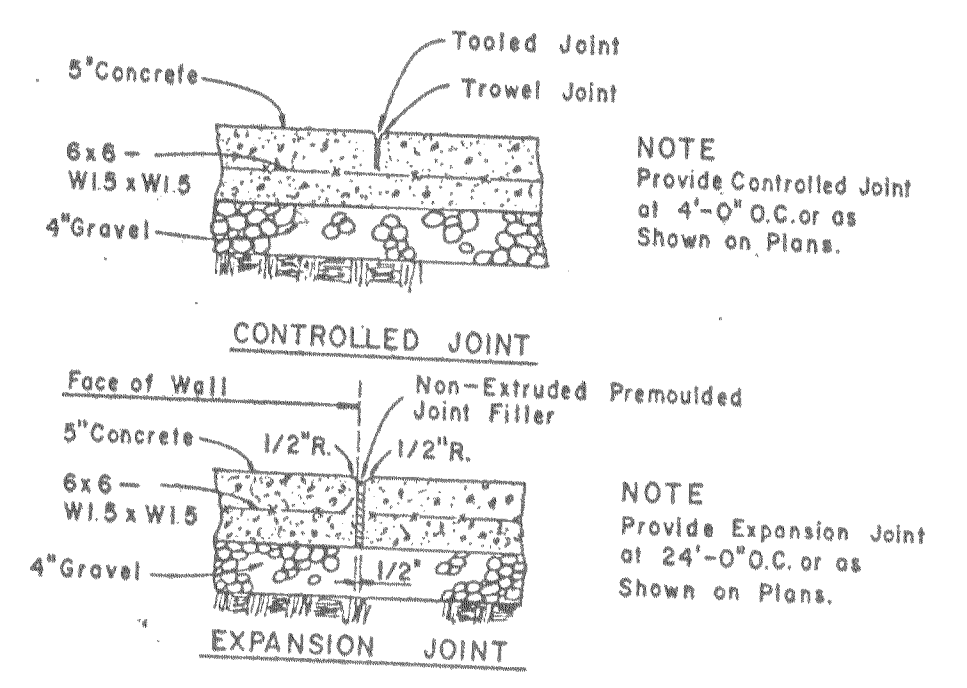
INTEGRAL ROLLED CURB



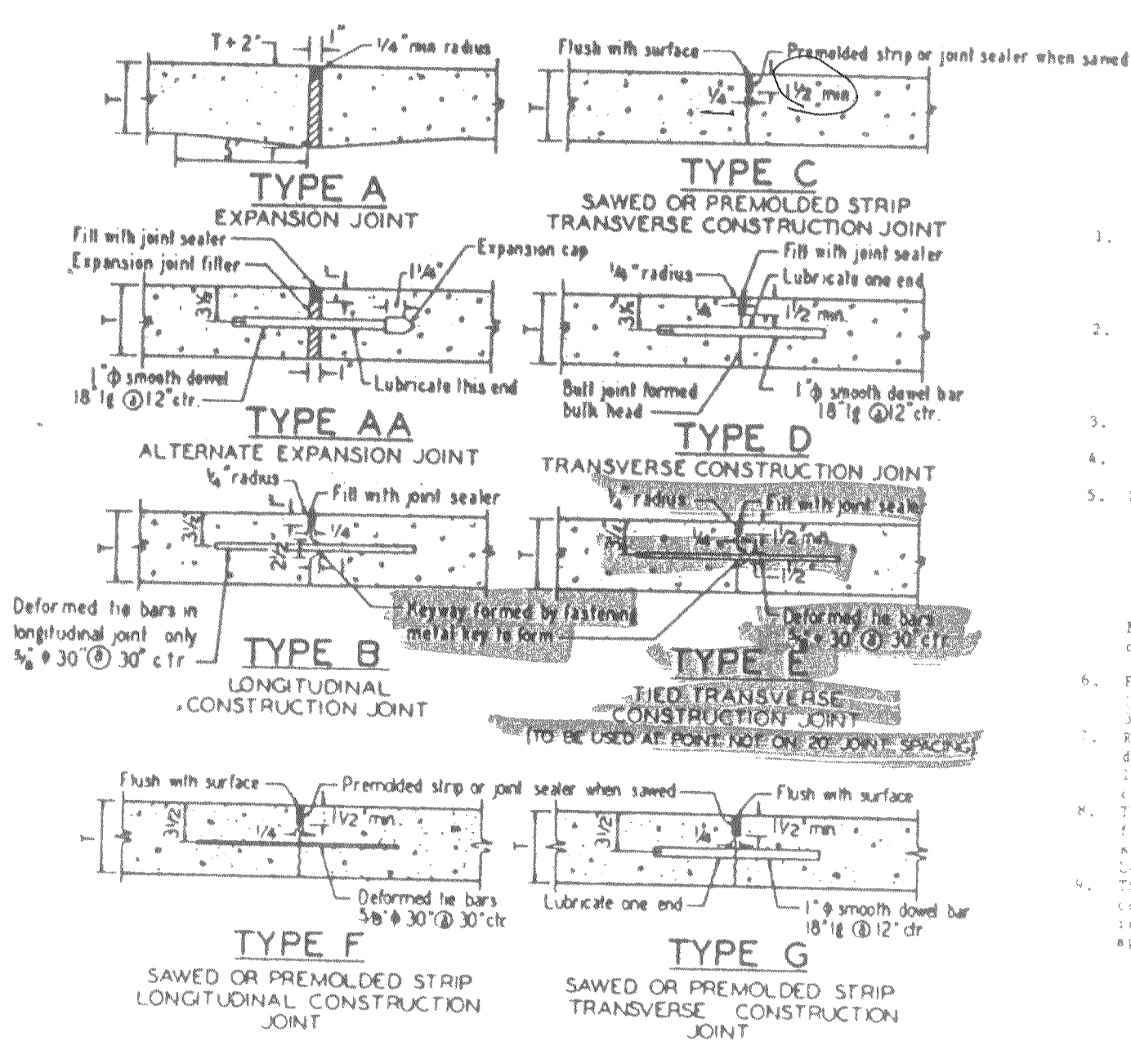
INTEGRAL CURB PAVEMENT TYPICAL SECTIONS AND DETAILS



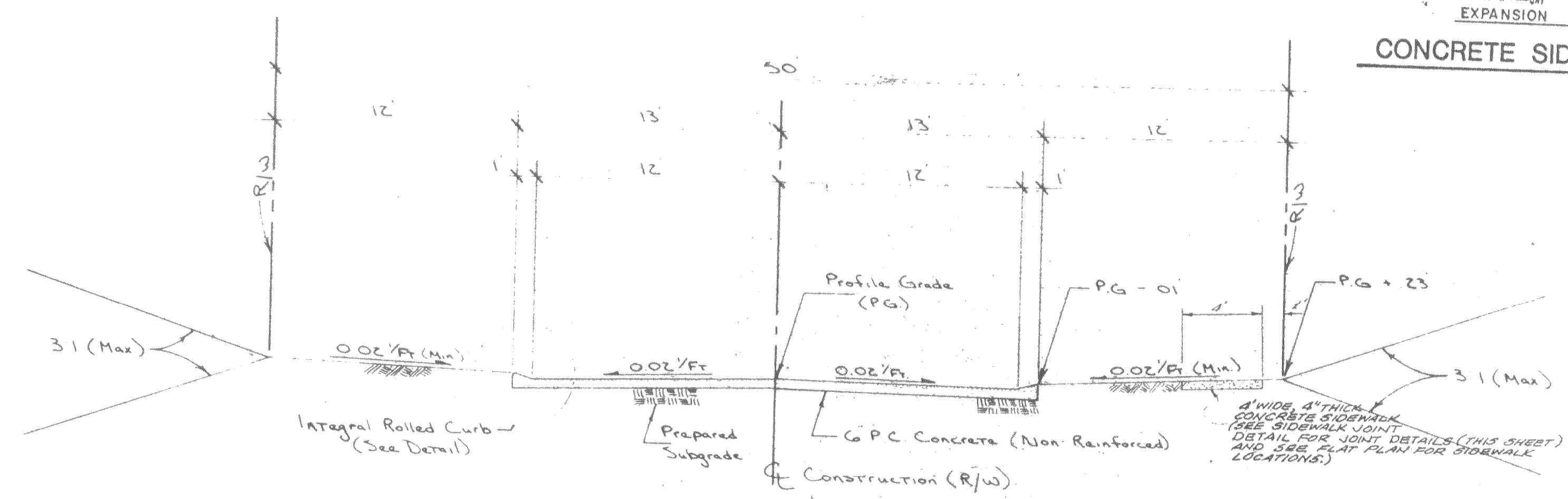
CLEANOUT DETAIL
 (N.T.S.)



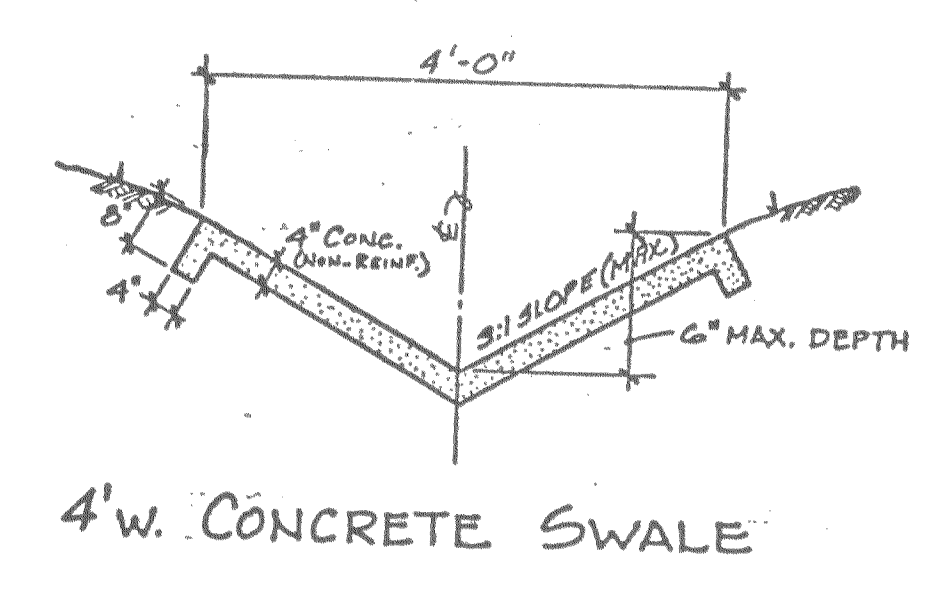
CONCRETE SIDEWALK JOINTS



1. All catch basins shall be separate from the pavement and curb by expansion joint material extending completely through curb and along full length, unless otherwise specified in Construction Details.
2. Where a joint falls within a catch basin, the catch basin shall be cast in place with the curb and pavement and shall be separated from the curb and pavement by expansion joint material extending through curb and pavement.
3. Irregular configurations shall be shown in the Construction Details.
4. Construction joints shall be staggered and shall be staggered from curb to curb in poured integral curb pavement.
5. Minimum thickness for basecourse.



TYPICAL SECTION
 (26\"/>



4\"/>