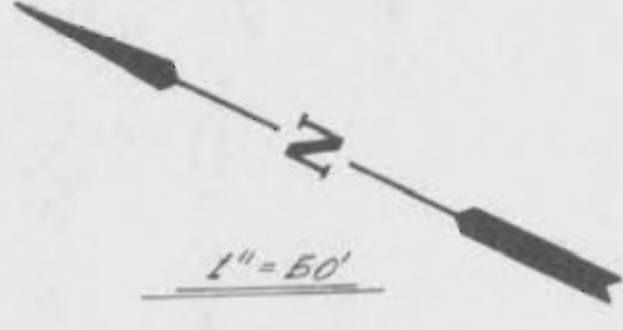
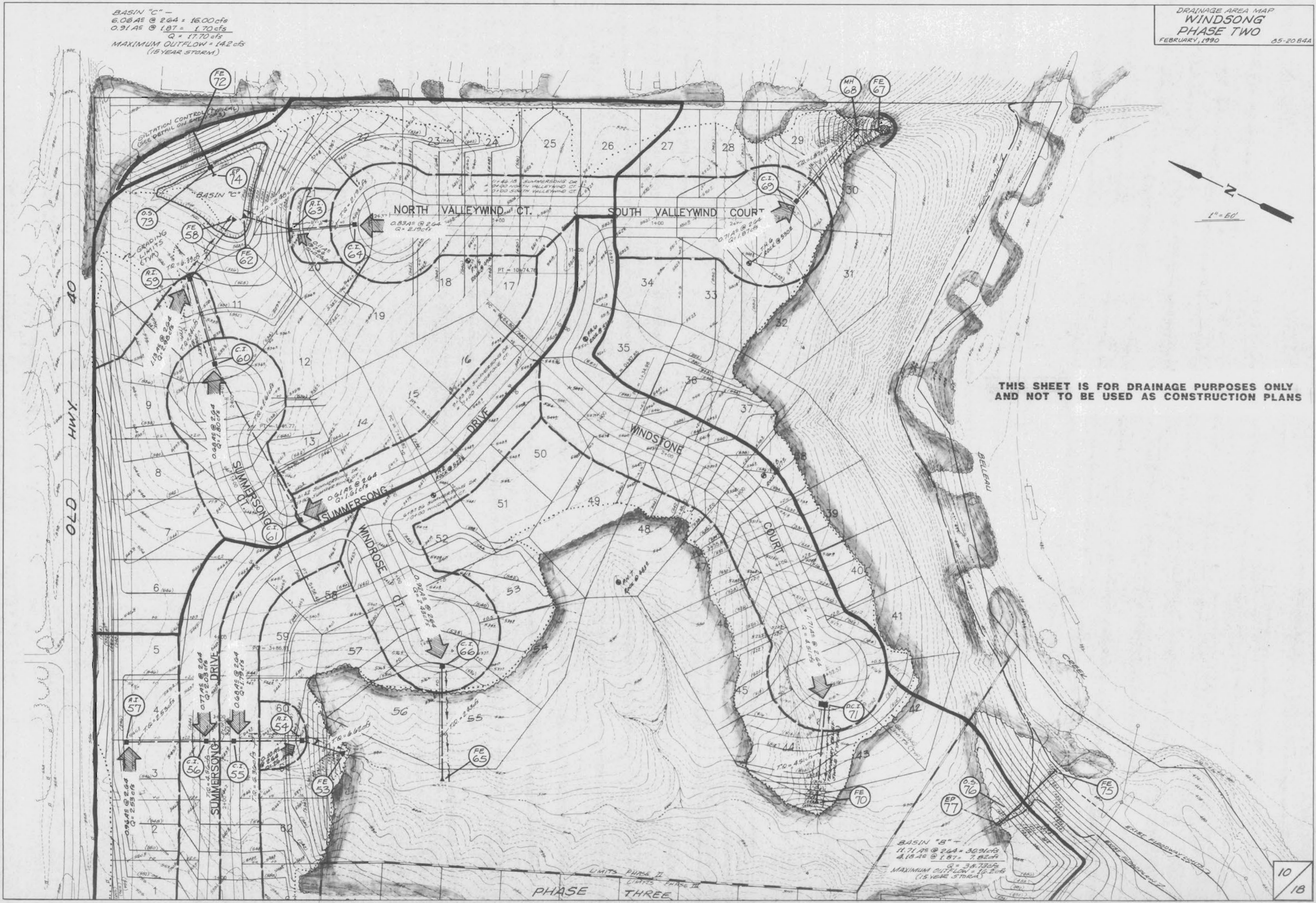


BASIN "C" -
 6.06 AF @ 2.64 = 16.00 cfs
 0.91 AF @ 1.87 = 1.70 cfs
 Q = 17.70 cfs
 MAXIMUM OUTFLOW = 14.2 cfs
 (15 YEAR STORM)

DRAINAGE AREA MAP
WINDSONG
PHASE TWO
 FEBRUARY, 1990 05-2084A



THIS SHEET IS FOR DRAINAGE PURPOSES ONLY
 AND NOT TO BE USED AS CONSTRUCTION PLANS



BASIN "B" -
 11.71 AF @ 2.64 = 30.91 cfs
 4.18 AF @ 1.87 = 7.82 cfs
 Q = 38.73 cfs
 MAXIMUM OUTFLOW = 16.2 cfs
 (15 YEAR STORM)

10
 18