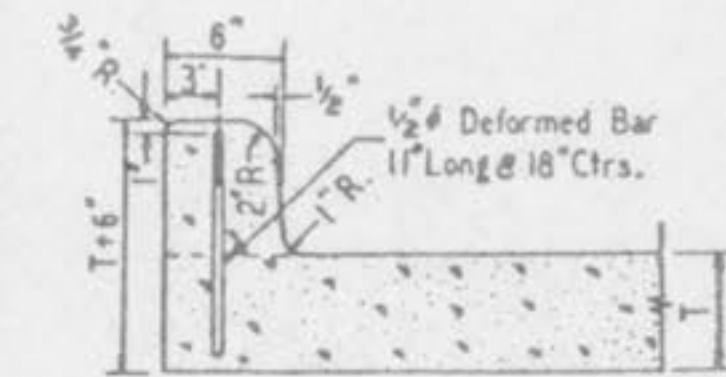


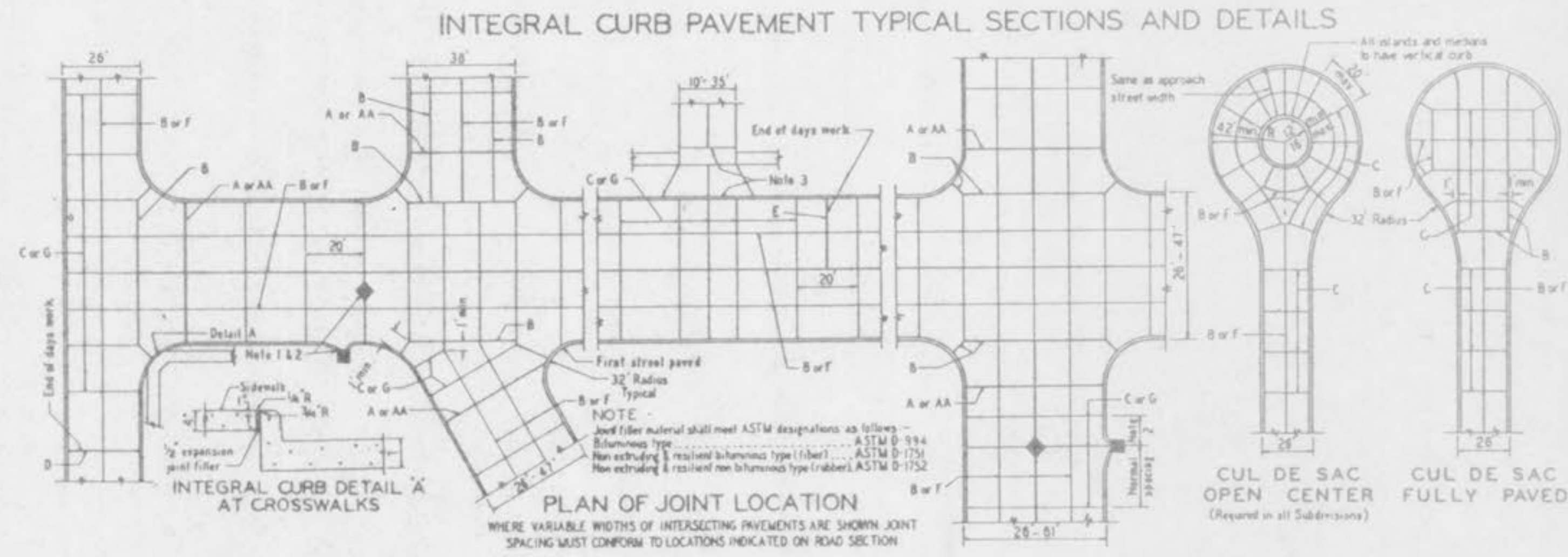
TREE PLANTING DETAIL  
 NO SCALE



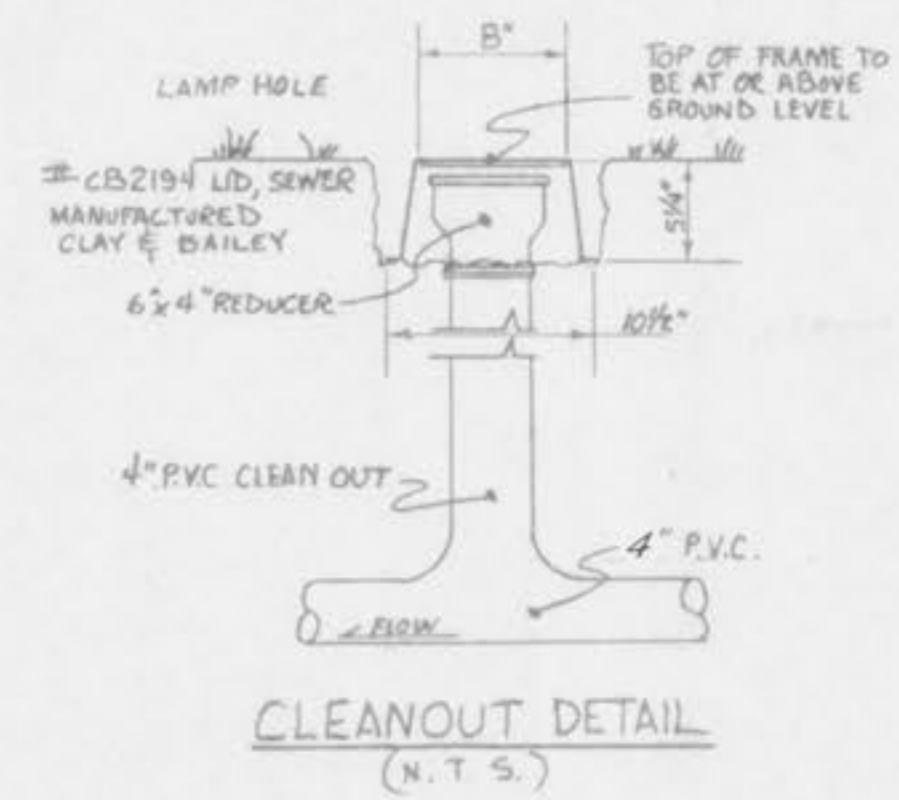
INTEGRAL VERTICAL CURB



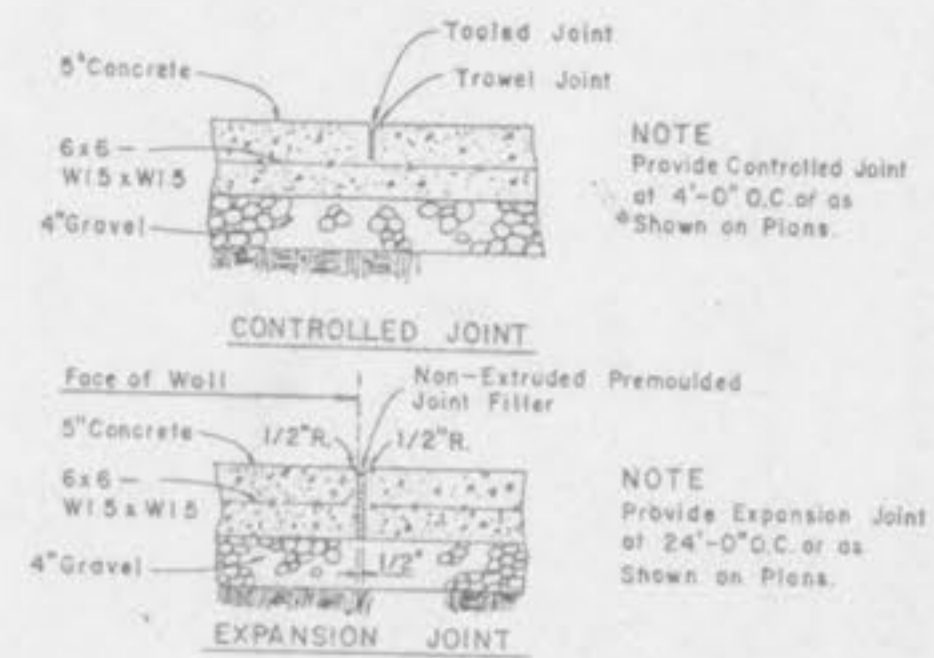
INTEGRAL ROLLED CURB



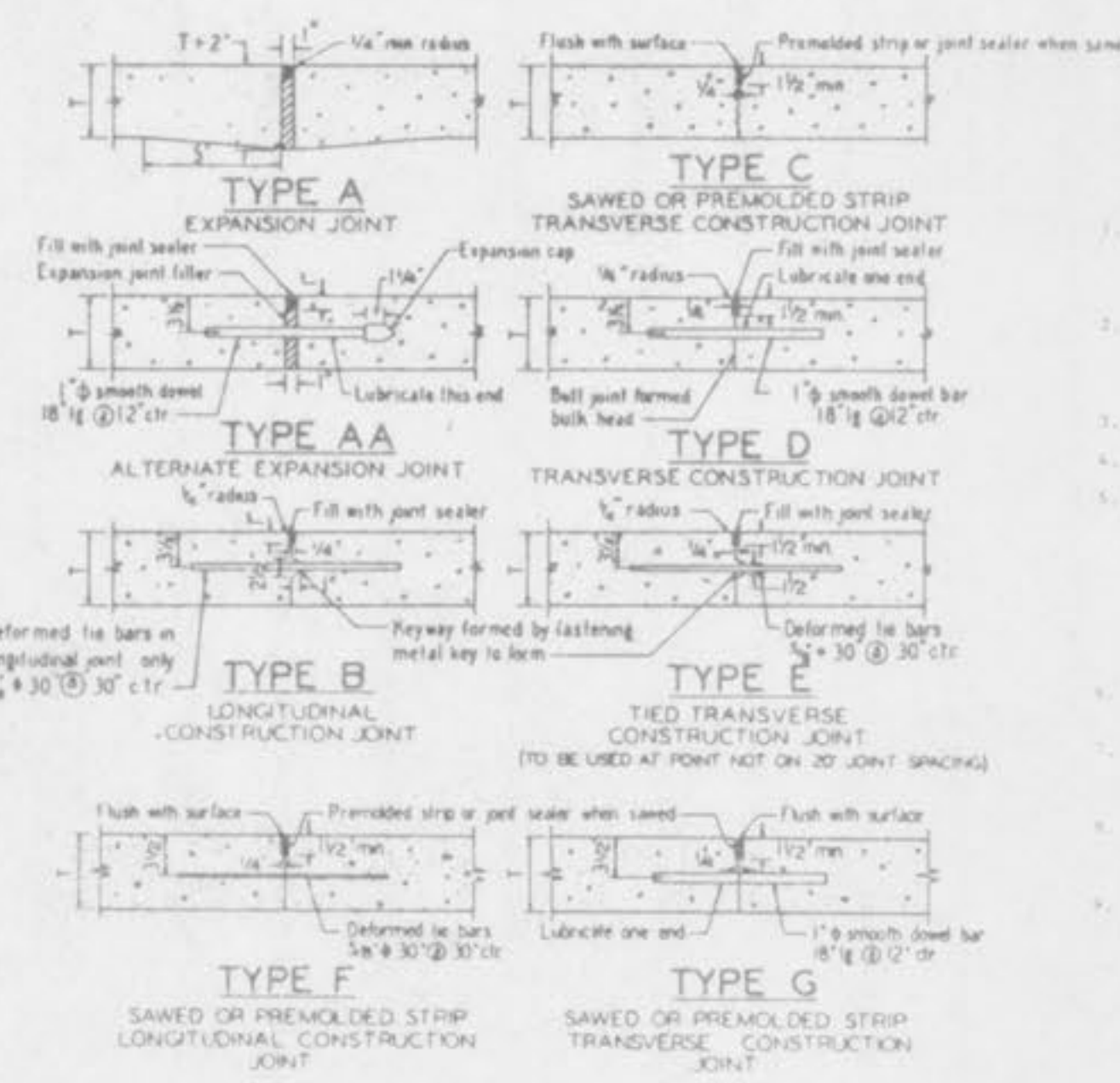
INTEGRAL CURB PAVEMENT TYPICAL SECTIONS AND DETAILS



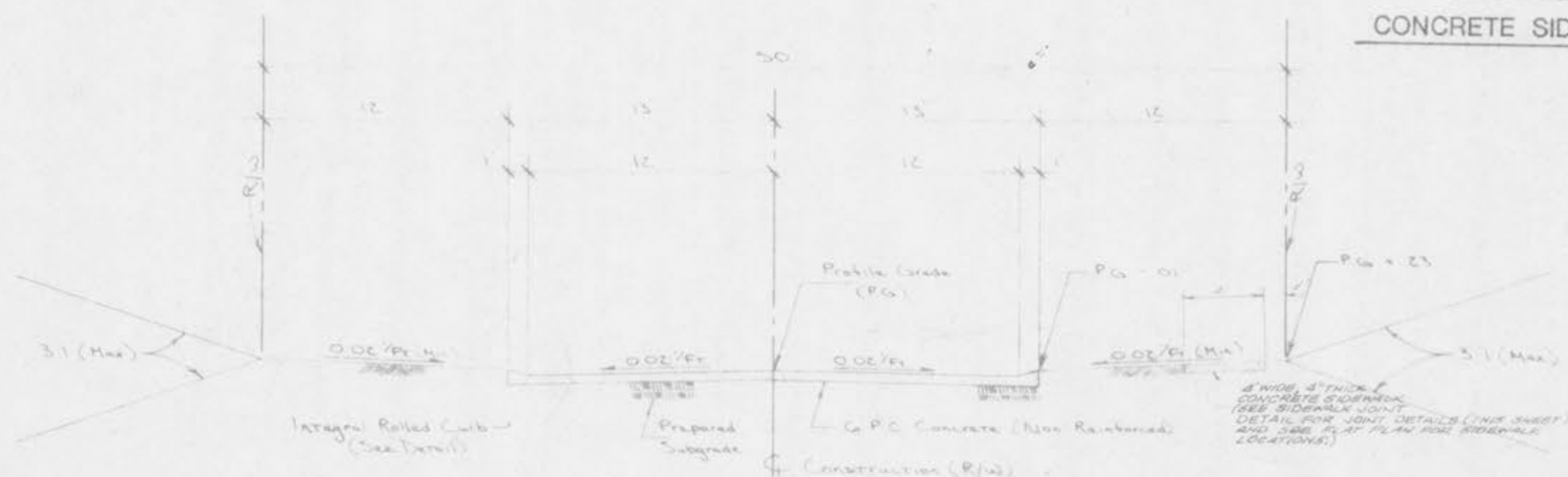
CLEANOUT DETAIL  
 (N.T.S.)



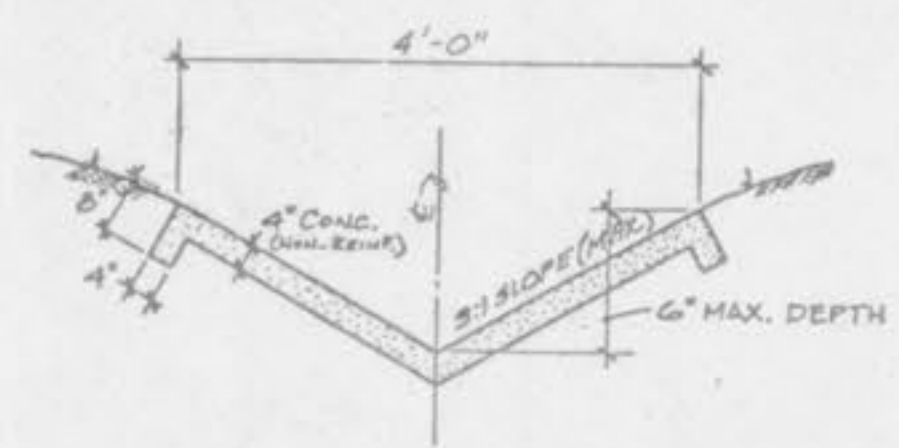
CONCRETE SIDEWALK JOINTS



- GENERAL NOTES
- All curb sections shall be separated from the pavement and curb by expansion joint material extending completely through curb and into pavement having width the pavement finish shall be 1/2" above curb top. (Refer to Construction Details)
  - When a curb falls with 5% or 10% concrete grade, maintain an even appearance, whether use of wide, grade finish side of curb in joint to fall in lower atmosphere and at or between corners of rectangular structures.
  - Driveway configurations are shown in the "Entrance Construction Details".
  - Construction joint and joint bars may be omitted when curb is cast integral with pavement.
  - Minimum thickness for concrete is:
- |                                  |    |
|----------------------------------|----|
| Local or Minor Terrace           | 4" |
| Major or Industrial Terrace      | 6" |
| Industrial or Commercial Terrace | 8" |
- Base material under pavement will be used with a cushion of 1/2" (1/2" max).
- The joint detail in which curb and pavement are separated by 1/2" thick concrete, with 1/2" deflated 1/2" bar, 30" to 40" max, shall be used for Type B Longitudinal Joint, Type C Sawed or Premolded Strip Transverse Construction Joint, and Type D Tied Transverse Construction Joint.
  - The location of the curb and Type B Longitudinal Construction Joint in these sections may be determined from the vertical section of construction details in this manual.



TYPICAL SECTION  
 (26" W. P.C. CONC. PVMT.)



4" W. CONCRETE SWALE