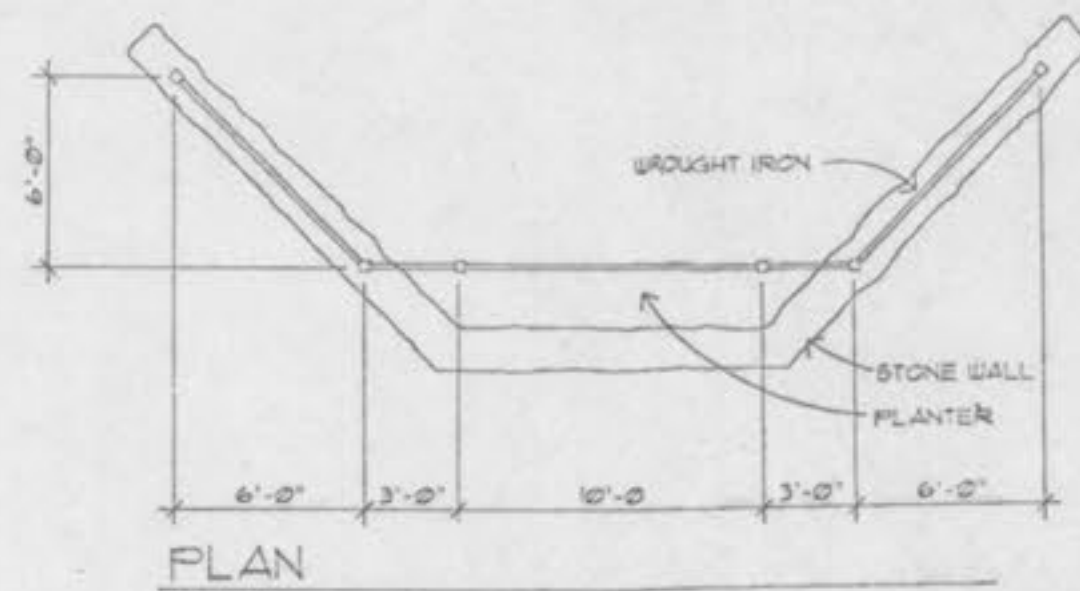
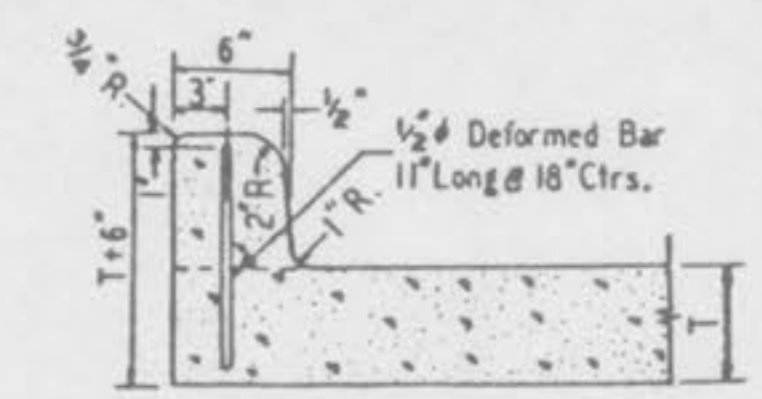


TREE PLANTING DETAIL  
NO SCALE



WIND ARCHITECTURAL GROUP  
2327 Oak Avenue  
Burlington, Vermont 05407  
304-645-1800

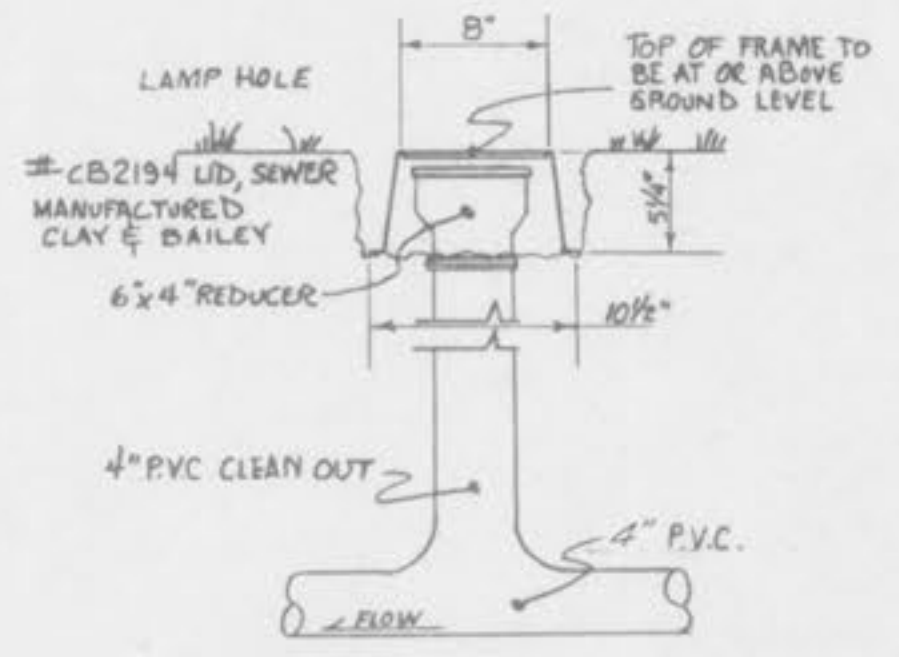
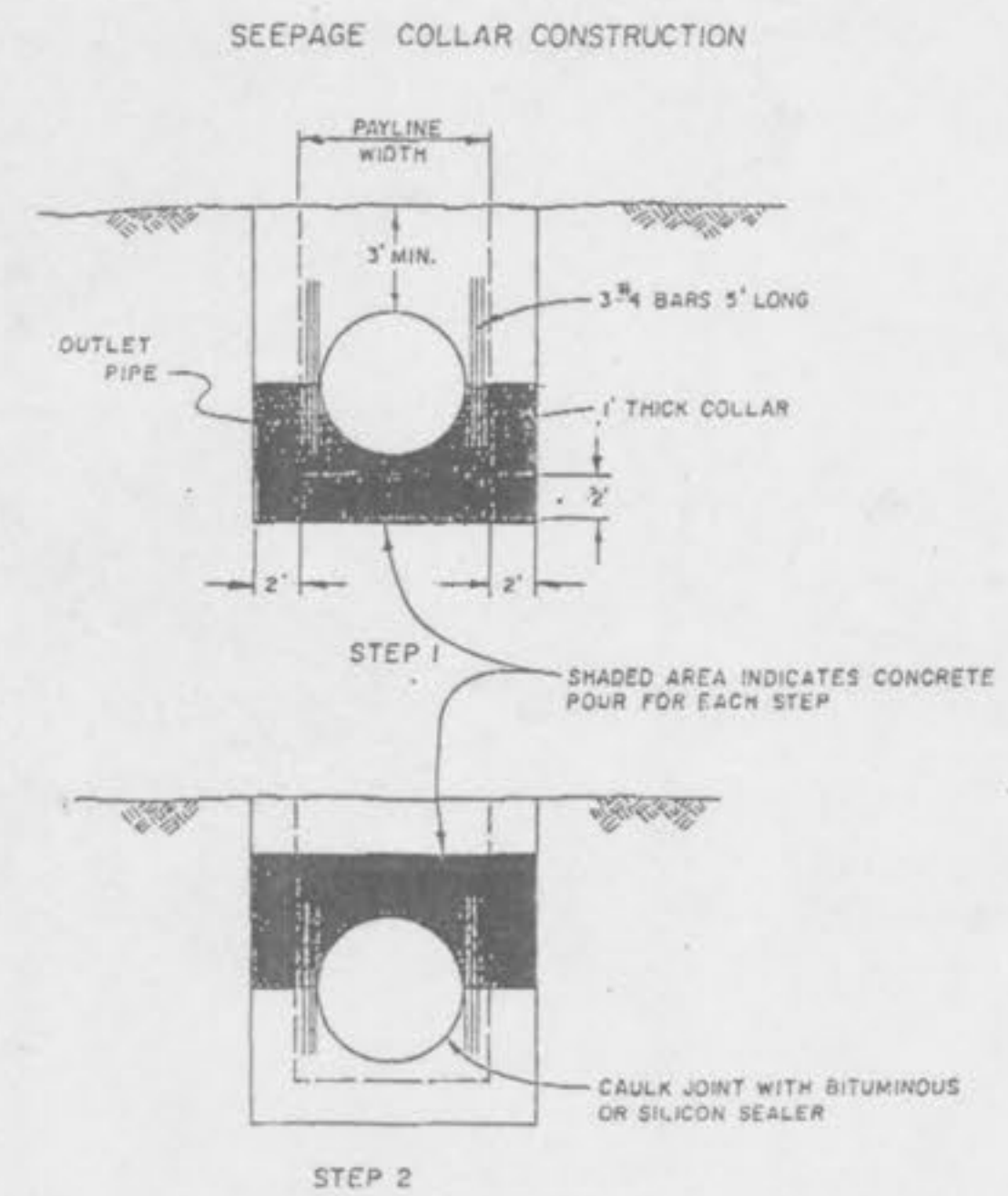
"ENTRANCE MONUMENT" DETAIL  
(N.T.S.)



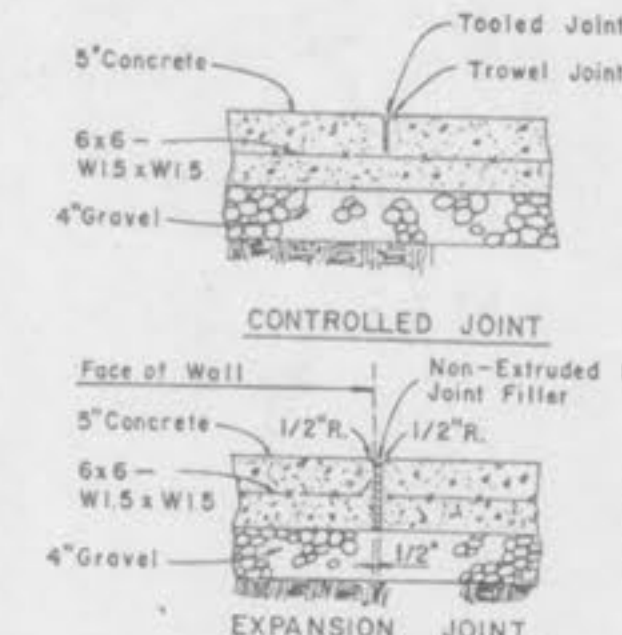
INTEGRAL VERTICAL CURB



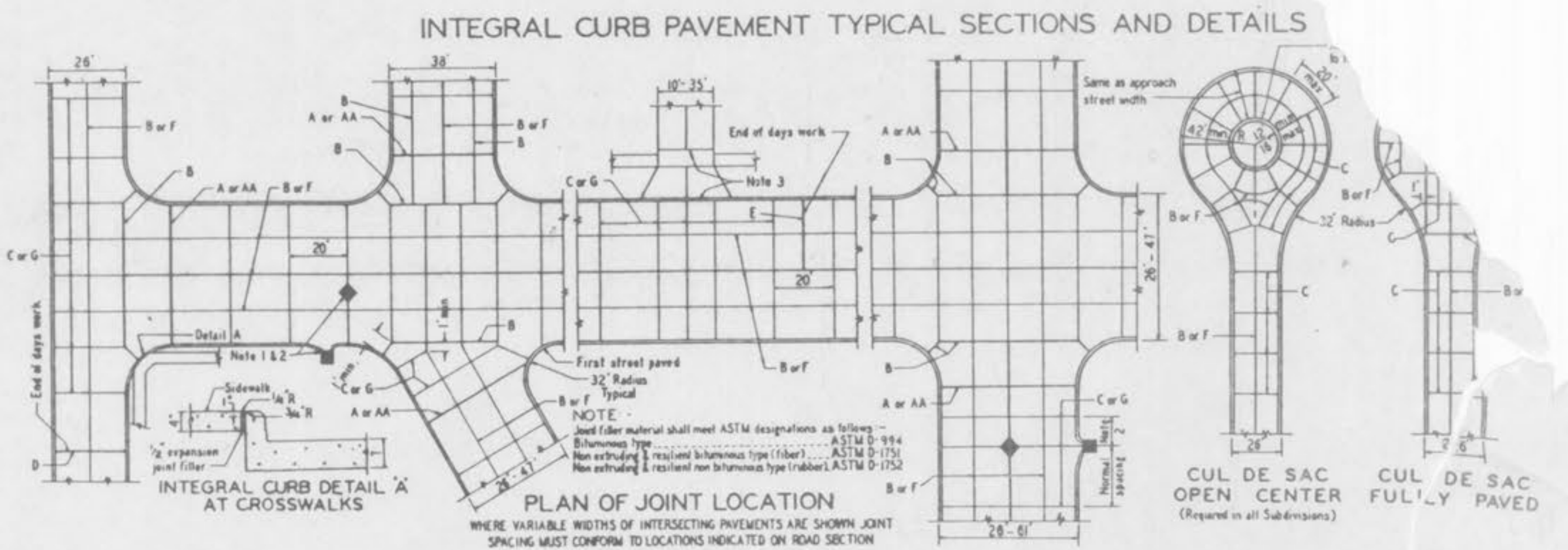
INTEGRAL ROLLED



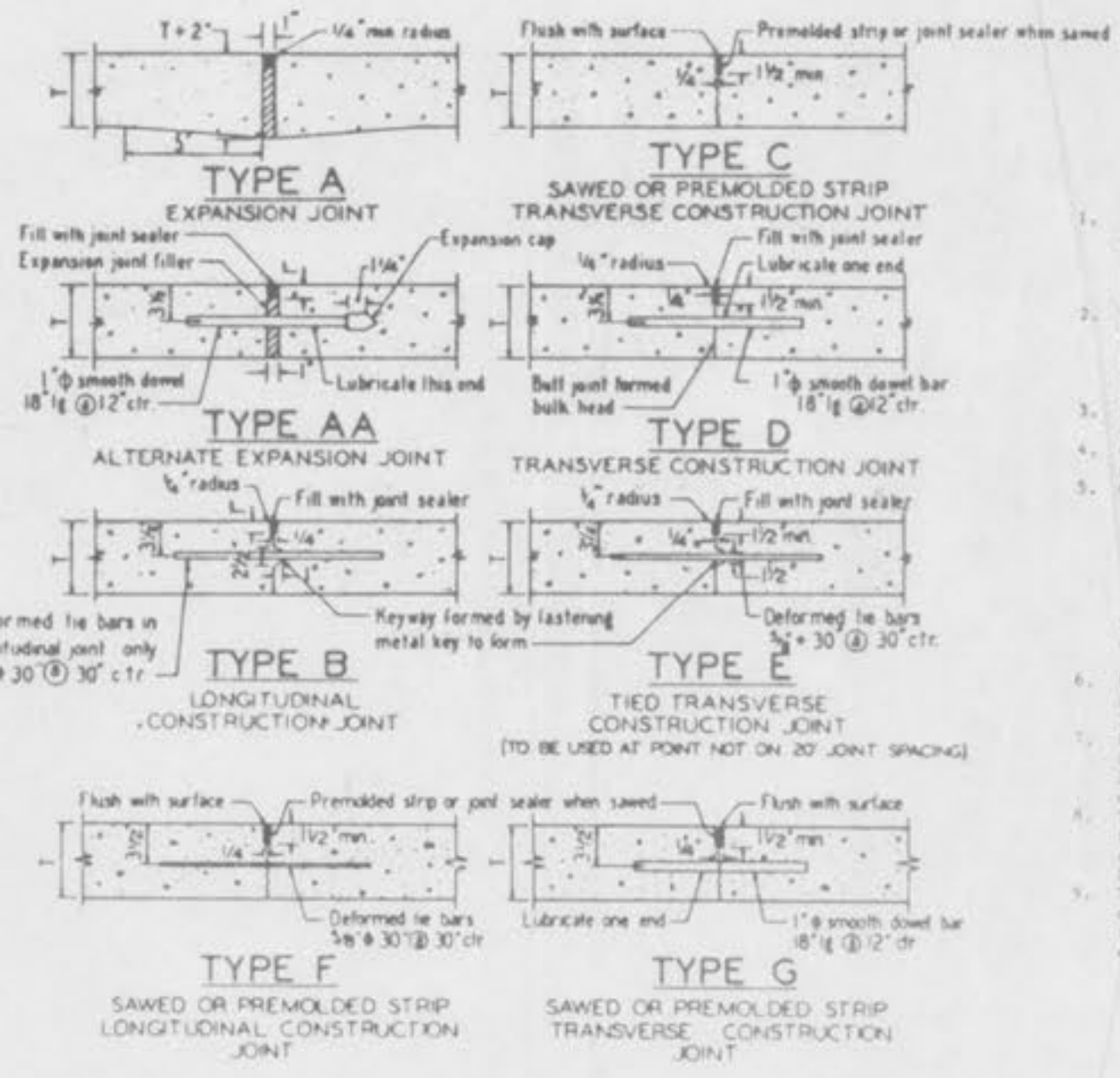
CLEANOUT DETAIL  
(N.T.S.)



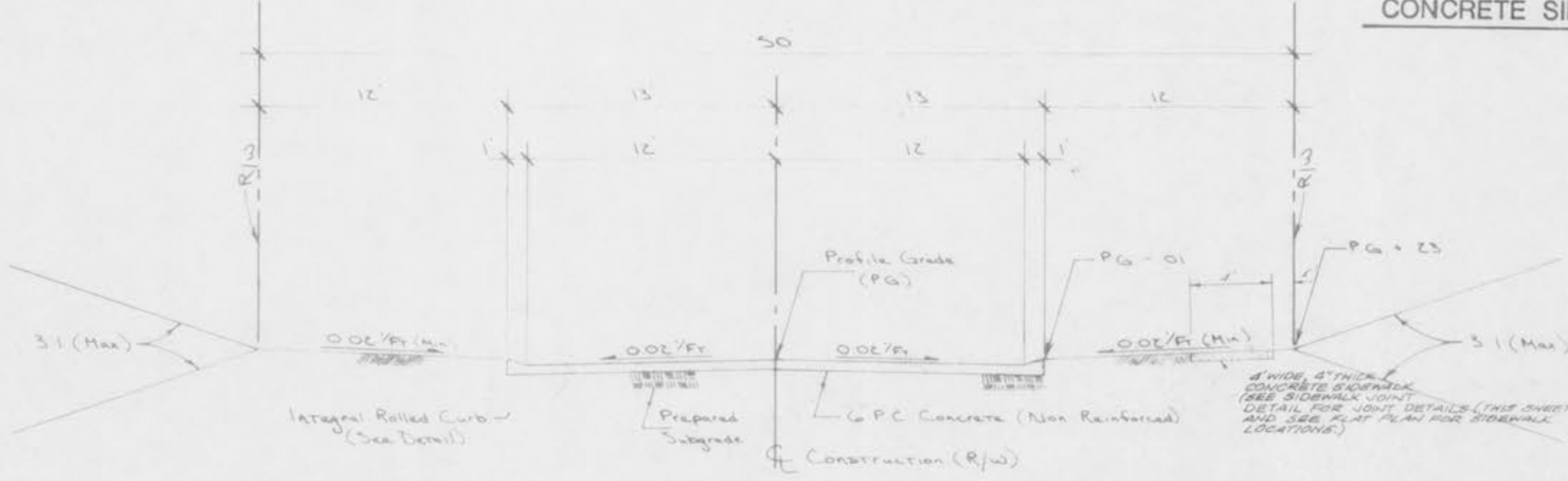
CONCRETE SIDEWALK JOINTS



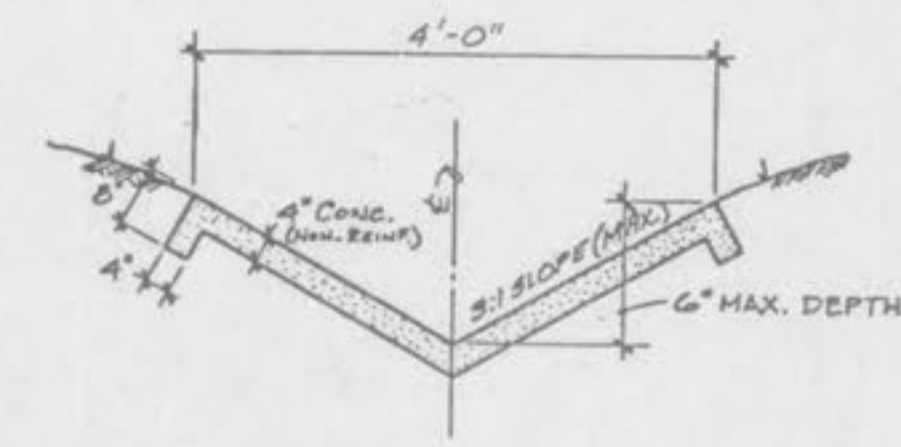
INTEGRAL CURB PAVEMENT TYPICAL SECTIONS AND DETAILS



- GENERAL NOTES
1. All curb bases shall be separate from the pavement and curb by expansion joint material extending completely through curb and curb base. Sealant shall be placed in the "Sever Construction Detail".
  2. When a joint falls within 5 ft. of or between curb, manhole, or other structures, shorten curb or manhole structure and at or between corners of rectangular structures.
  3. Driveway configurations are shown in the "Entrance Construction Detail".
  4. Construction joints and dowel bars may be omitted when curb is poured integral with pavement.
  5. Minimum Thickness for Pavement is 4\"/>
- CONCRETE (T)
- |                                |    |
|--------------------------------|----|
| Local or Minor Streets         | 6" |
| Major or Industrial Streets    | 7" |
| Arterial or Industrial Streets | 8" |
- See material under pavement will be made with a 1/2 inch of Ballast Stone Base.
6. For minor rural or urban and minor subdivision pavements (1/2\"/>
  7. Detail is suitable for joint and bar requirements for different street classifications. Note that width and location of each paved portion of the pavement may change the type and location of joint required.
  8. Transverse or longitudinal construction joints in utility lined pavement may be made with grooves or not, if such practice has been approved in advance by the St. Louis County Department of Highway & Traffic.
  9. The location of the Type B and Type E longitudinal construction joints in above sections may be interchanged for the different widths of construction approval is obtained.



TYPICAL SECTION  
(26\"/>



4\"/>