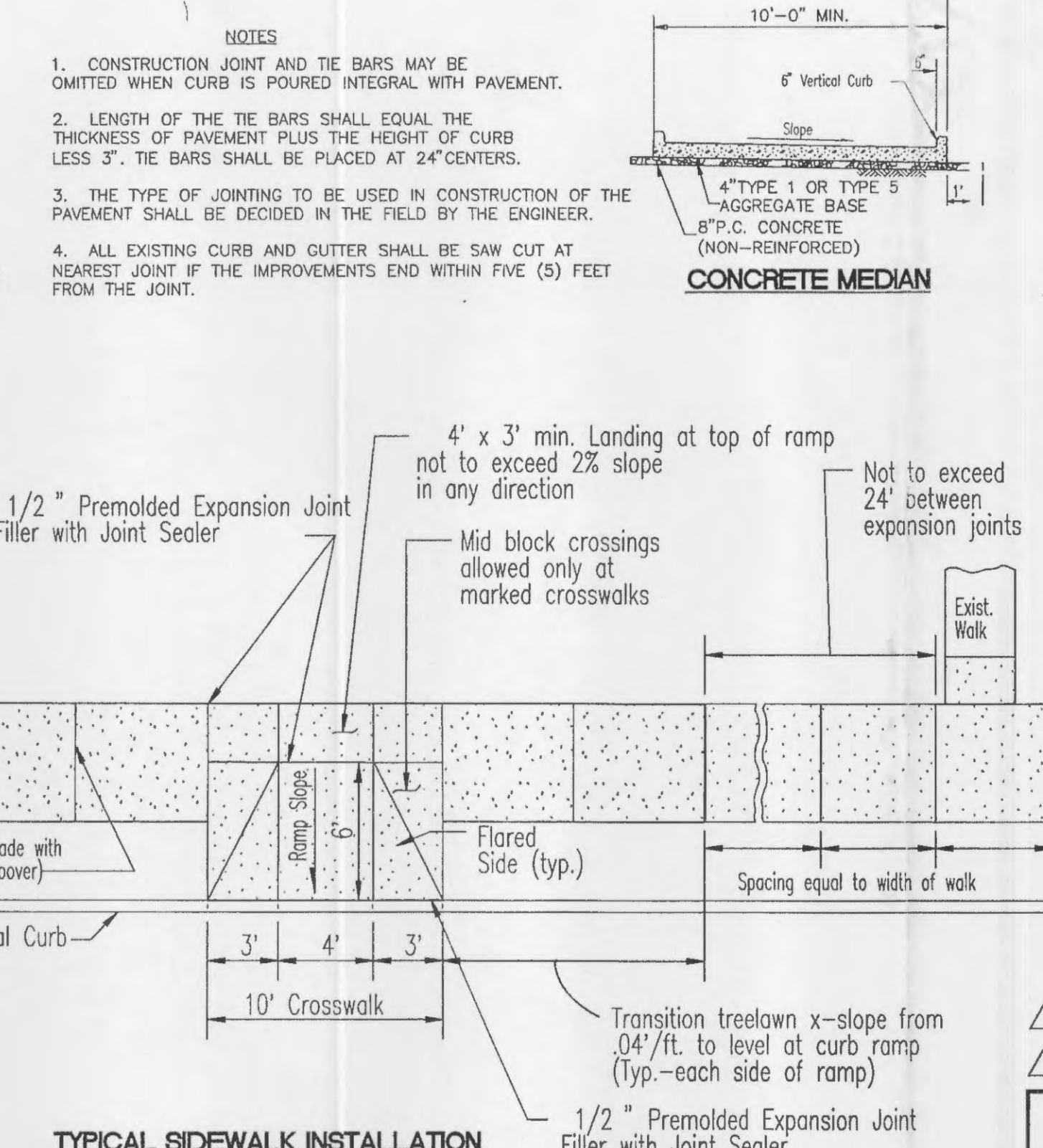
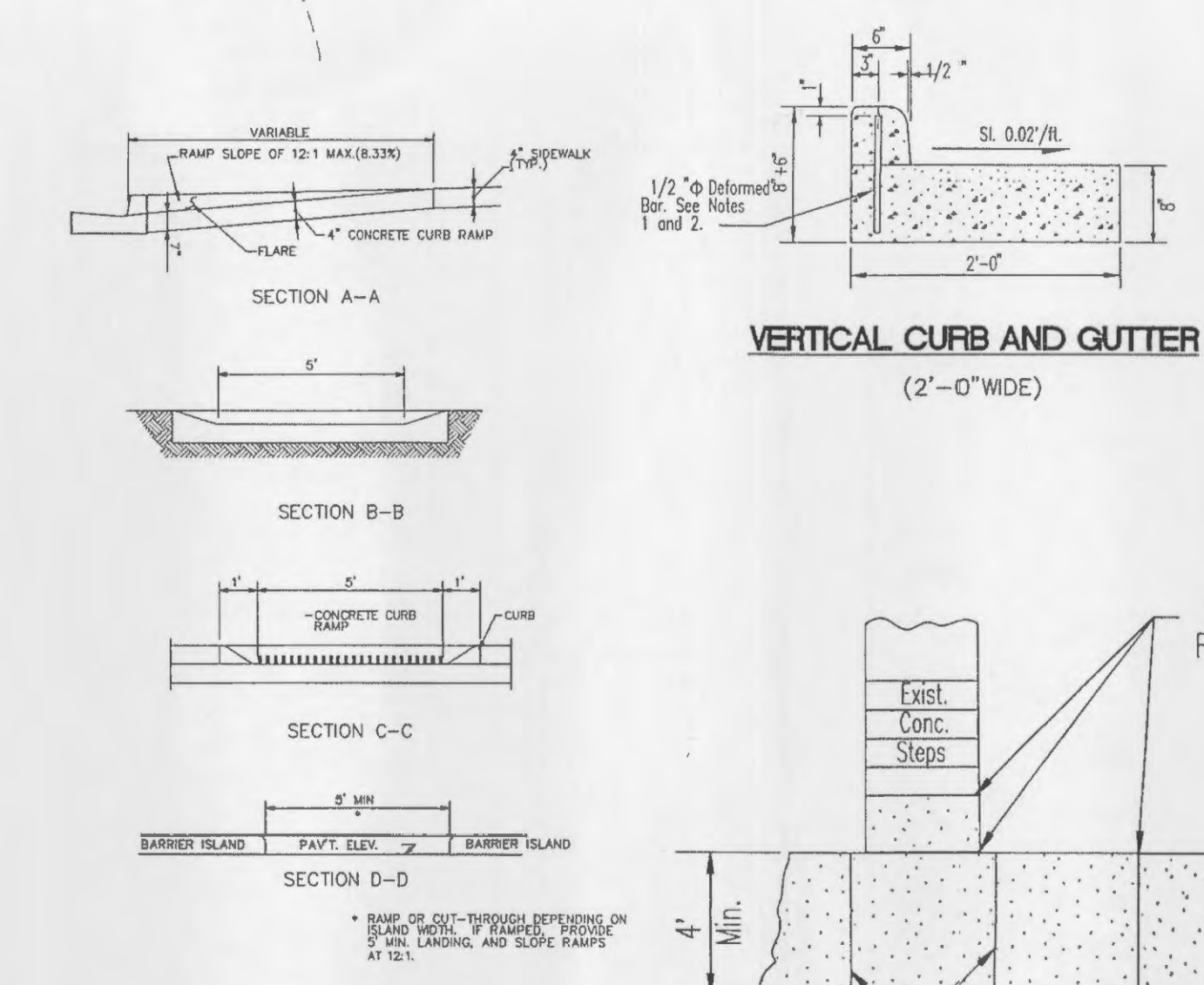
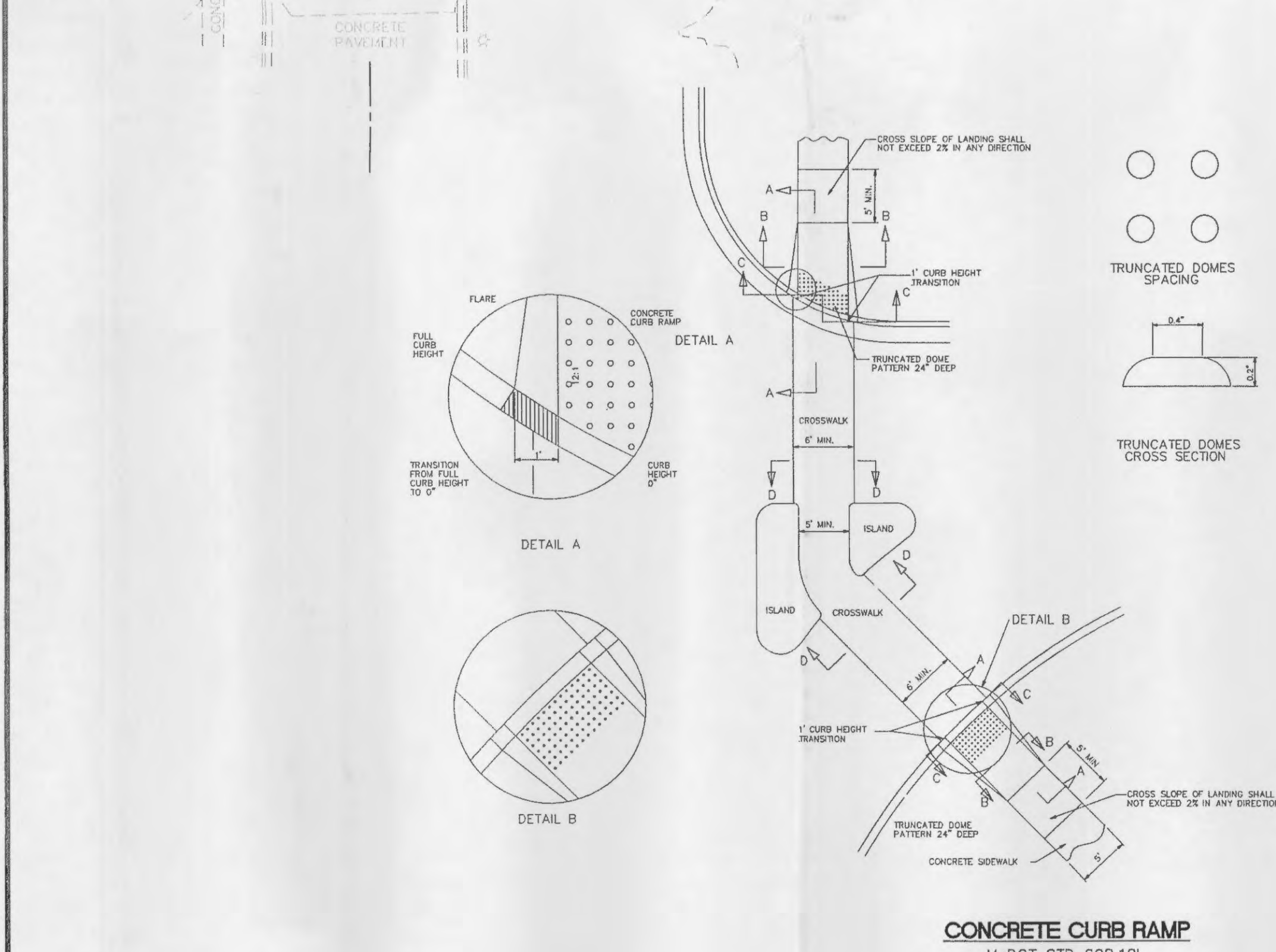
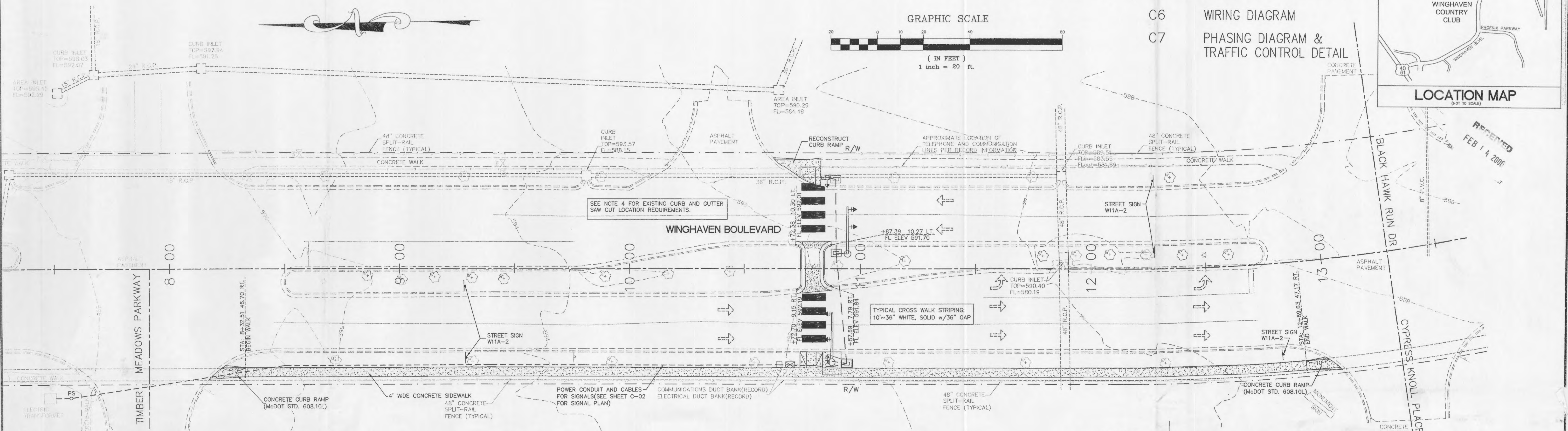
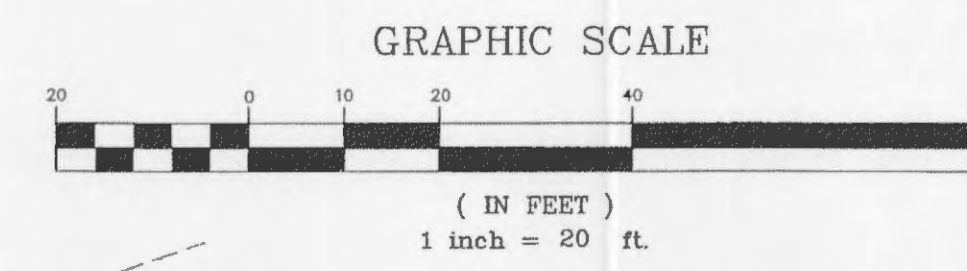
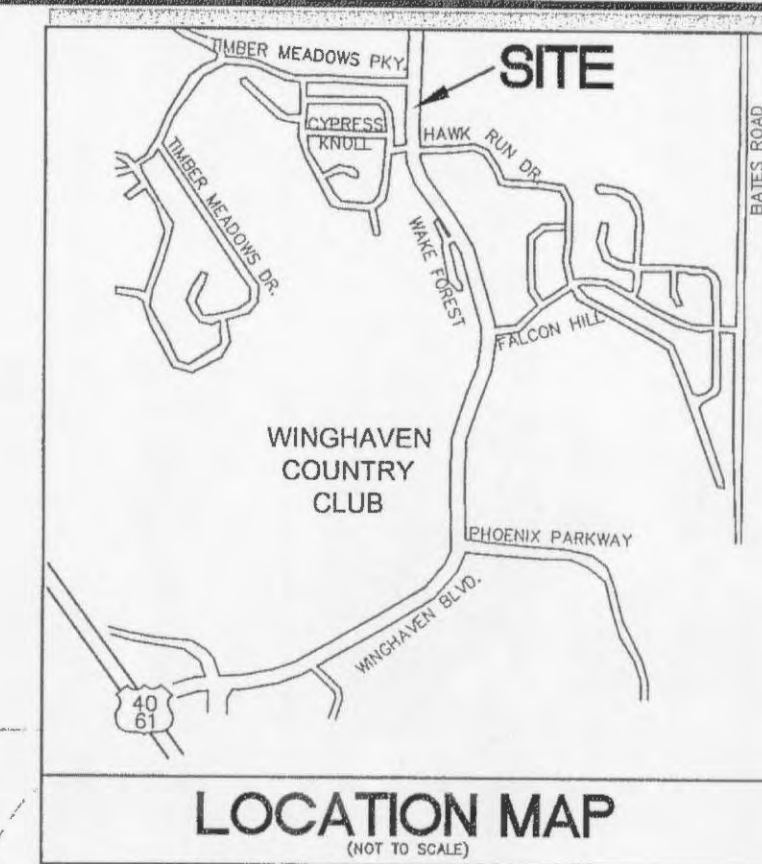


WINGHAVEN BLVD. SIDEWALK IMPROVEMENTS

(OMITTED FROM SET)

INDEX

- C1 SIDEWALK IMPROVEMENTS
- C2 SIGNAL PLAN
- C3-5 ~~SUMMARY OF QUANTITIES~~
- C6 WIRING DIAGRAM
- C7 PHASING DIAGRAM & TRAFFIC CONTROL DETAIL

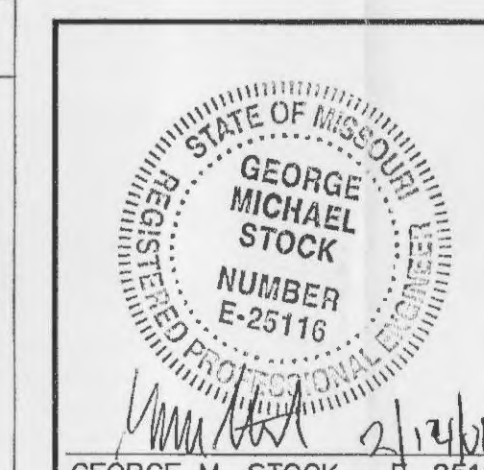
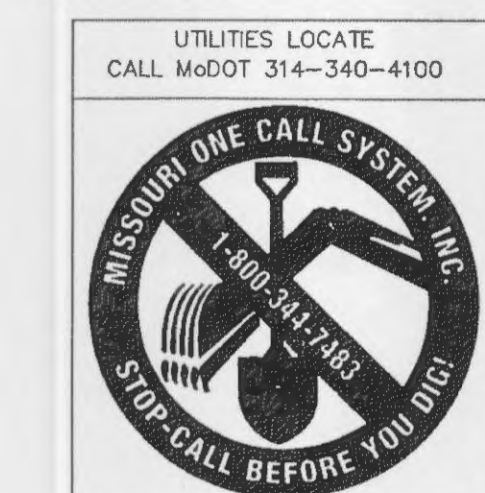


UTILITY NOTE:
UNDERGROUND FACILITIES, STRUCTURES AND UTILITIES HAVE BEEN PLOTTED FROM AVAILABLE SURVEYS, RECORDS AND INFORMATION, AND THEREFORE DO NOT NECESSARILY REFLECT THE ACTUAL EXISTENCE, NON-EXISTENCE, SIZE, TYPE, NUMBER, OR LOCATION OF THESE FACILITIES, STRUCTURES AND UTILITIES. THE CONTRACTOR SHALL BE RESPONSIBLE FOR VERIFYING THE ACTUAL LOCATION OF ALL UNDERGROUND FACILITIES, STRUCTURES, AND UTILITIES, EITHER SHOWN OR NOT SHOWN ON THESE PLANS. THE UNDERGROUND FACILITIES, STRUCTURES, AND UTILITIES SHALL BE LOCATED IN THE FIELD PRIOR TO ANY GRADING, EXCAVATION OR CONSTRUCTION OF IMPROVEMENTS. THESE PROVISIONS SHALL IN NO WAY ABSOLVE ANY PARTY FROM COMPLYING WITH THE UNDERGROUND FACILITY SAFETY AND DAMAGE PREVENTION ACT, CHAPTER 319 RSMo.

BENCHMARK
SC-13: LOCATED 2.70 MILES NORTH/NORTHWEST OF THE INTERSECTION OF HIGHWAY 94 AND HIGHWAY D ON THE NORTH SIDE OF WESTBOUND LANES OF HIGHWAY 40 NEAR A FIELD ENTRANCE GOING NORTH FOR THE WESTBOUND LANES OF HIGHWAY 40. IT IS 29.55' NORTHEAST OF A P.K. NAIL IN THE CENTER LINE OF WESTBOUND HIGHWAY 40, 39.2' SOUTHWEST OF THE CENTER POINT OF THE NORTHWEST END OF A CORRUGATED METAL PIPE. ELEV.=499.34'

GENERAL NOTES:
1. MAXIMUM SLOPE ON ALL CONCRETE CURB RAMP, PROVIDE A LANDING THE SAME WIDTH AS CURB RAMP AND 2' LONG ADJACENT TO CURB RAMP WITH MAXIMUM 2% SLOPE IN ANY DIRECTION.
2. TRIVED CONCRETE (AS PER STANDARD SPECIFICATION 1056) SHALL BE USED ON CURB RAMP ONLY.

TYPICAL SIDEWALK INSTALLATION
(WITH MIDDLEBLOCK CURB RAMP - TYPE 7)



WINGHAVEN BLVD. - SIDEWALK IMPROVEMENTS

PLAN

Stock & Associates
Consulting Engineers, Inc.

257 Chesterfield Business Parkway
St. Louis, MO 63005
PH. (636) 530-9100
FAX (636) 530-9130
e-mail: general@stockassoc.com
Web: www.stockassoc.com

DATE: 08/27/04
CHECKED BY: D.P.B.
JOB NUMBER: 202-2777.15
SHEET: C1 of 7

*Contractor PECO Corp
APPROVED AS NOTED
2-23-06
Frank Redden*

△ UPDATED SIGNAL LAYOUT PER UTILITY CONFLICT FIELD ADJUSTMENTS, ADDED SIGNAL POST BASE 1 DETAIL 02/13/06
△ ADDED CURB & GUTTER SAW CUT NOTES, SIDEWALK CROSS SLOPE NOTES, REVISED CROSS WALK STRIPING, ADDED PEDESTRIAN SIGN INFORMATION, AND TRAFFIC CONTROL DETAIL 11/22/04