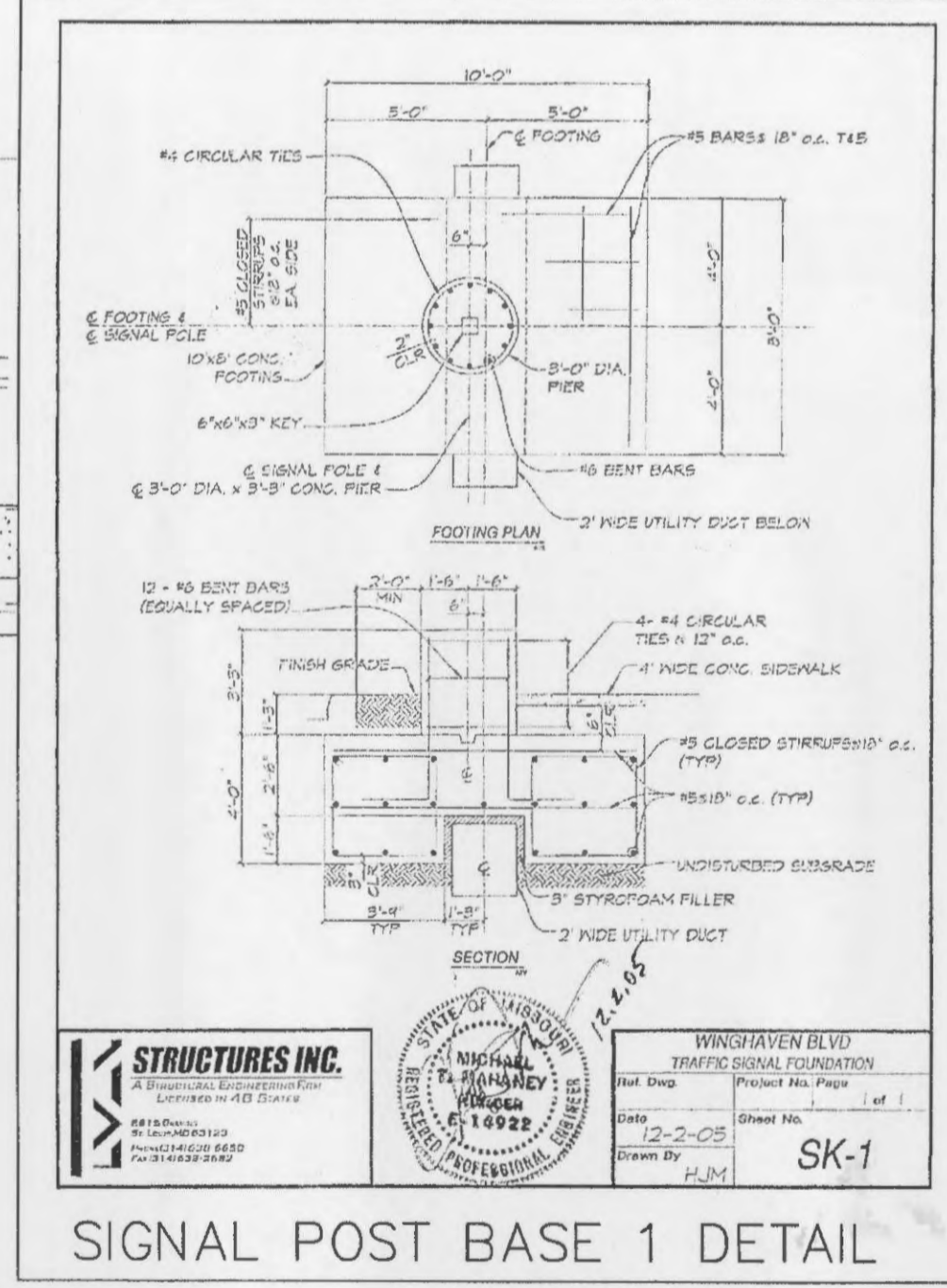
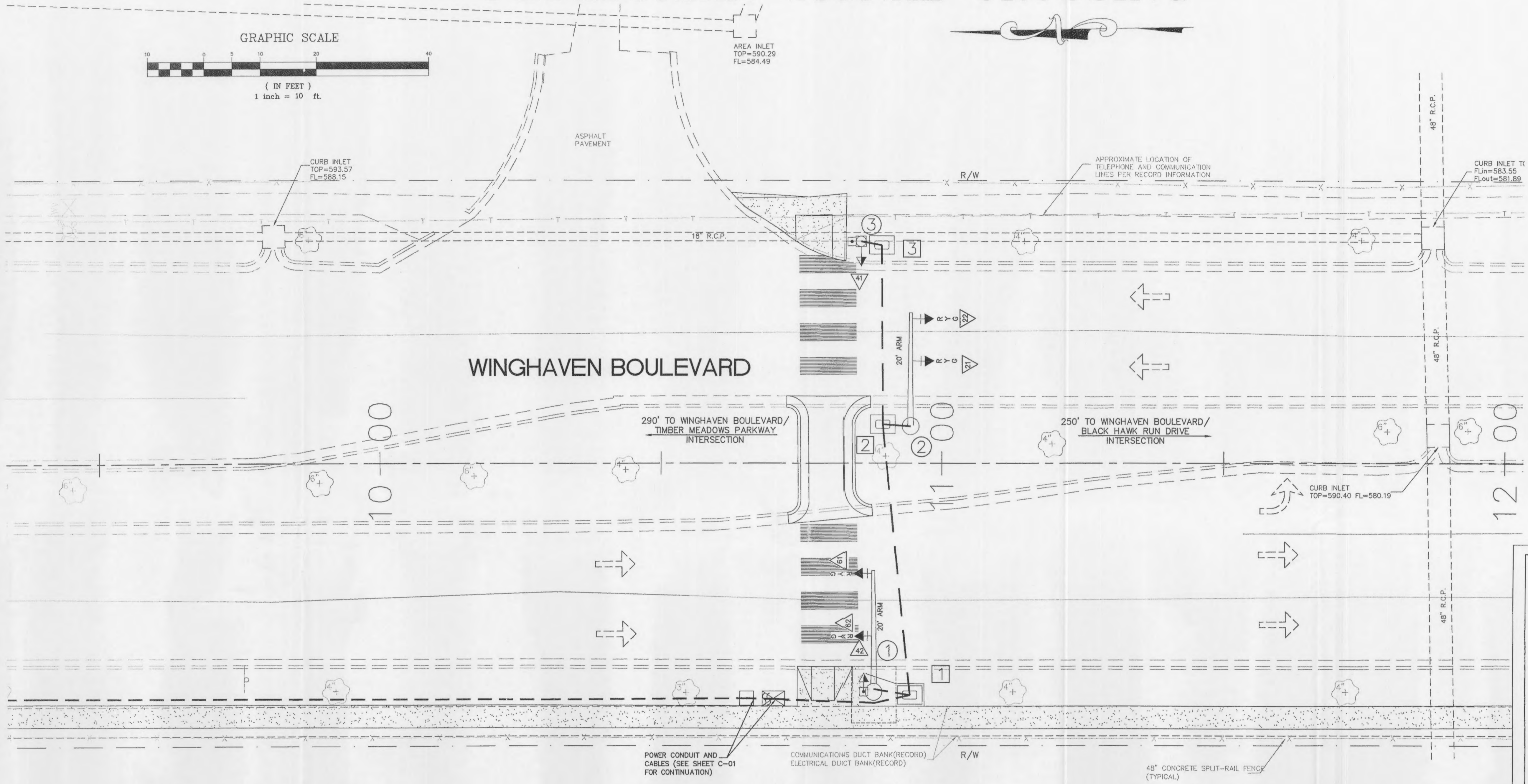


WINGHAVEN BLVD. PEDESTRIAN SIGNAL CROSSING

SIGNS PER MISSOURI STANDARD PLANS FOR
HIGHWAY CONSTRUCTION, SECTION 920.80

NOTES:

- 1.) All proposed traffic signal equipment, materials, and construction methods shall conform to the requirements and specifications described in the latest version of the Missouri Standard Plans for Highway Construction (Section 901 and 902).
- 2.) Signal timings to be provided by DESIGN ENGINEER.
- 3.) Existing underground (U/G), overhead (OHP) utilities and drainage structures have been plotted from available information and therefore, their locations must be considered approximate only. It is the responsibility of the individual contractors to exactly locate each utility before actual construction.
- 4.) 2" Rigid Conduit shall be furnished and installed by Contractor to the base of the Secondary Service Point. Power Cable shall be applied and left at base of Secondary Service point for hook-up by Ameren UE.
- 5.) All mast arms and signal poles shall be painted black. Carbolite Rustbond Penetrating Sealer SG shall be used as a base coat, with Carbolite 1334B as the final coat. The City Engineer must approve all other products. Materials and labor for this work shall be considered SUBSIDIARY to other bid items.
- 6.) All signal indicators shall be illuminated with light emitting diode (LED) modules. LED modules shall conform to ITE specifications and standards, and requirements set forth in the Missouri Standard Specifications for Highway Construction (Section 902.4.1).
- 7.) See figure TA-12 on sheet 7 for standard traffic control measures. Placement of the traffic control devices shall conform to the latest Manual on Uniform Traffic Control Devices and MoDOT standards.
- 8.) Battery backup shall be installed in the controller cabinet. There will be no direct pay item for the battery backup equipment, materials, cable, or any other items required for the complete and satisfactory operation of the battery backup system.
- 9.) Pedestrian push button shall be immediate call.



LEGEND

| | | |
|--|--|---|
| <p>➔ SIGNAL HEAD WITH BACKPLATE</p> <p>➔ SIGNAL HEAD—PEDESTRIAN</p> <p>☐ PUSH BUTTON DETECTOR</p> <p>☐ PULL BOX, TYPE 1 DRAIN, PREFORMED</p> <p>☐ PULL BOX NUMBER</p> <p>③ SIGNAL FACE NUMBER</p> <p>③ SIGNAL POST NUMBER</p> <p>☒ CAMERA</p> <p>☒ CONTROLLER WITH PAD</p> <p>— RIGID CONDUIT IN TRENCH</p> <p>— EXISTING RIGID CONDUIT</p> <p>— STOP LINE</p> <p>↔ LANE USE</p> | <p>● TYPE A BASE</p> <p>○ TYPE B BASE</p> <p>□ TYPE C BASE</p> <p>▬ INDUCTION LOOP DETECTOR</p> <p>— MAST ARM WITH OVERHEAD SIGN</p> <p>PS ○ POWER SUPPLY</p> <p>○ SERVICE POLE</p> <p>R RED LENS (CIRCULAR)</p> <p>Y YELLOW LENS (CIRCULAR)</p> <p>YL YELLOW LEFT ARROW LENS</p> <p>YR YELLOW RIGHT ARROW LENS</p> <p>G GREEN LENS (CIRCULAR)</p> <p>L GREEN LEFT ARROW LENS</p> <p>Rt GREEN RIGHT ARROW LENS</p> <p>S1 R10-10L - LEFT TURN SIGNAL (24 x 30)</p> <p>S2 R10-10R - RIGHT TURN SIGNAL (24 x 30)</p> <p>S13 D3-16 - STREET OR ROAD NAME (VAR. x 16)(ONE LINE)</p> | <p>☐ POWER CONDUIT AND CABLES (SEE SHEET C-01 FOR CONTINUATION)</p> <p>☐ COMMUNICATIONS DUCT BANK (RECORD) ELECTRICAL DUCT BANK (RECORD)</p> <p>☐ 48" CONCRETE SPLIT-RAIL FENCE (TYPICAL)</p> |
|--|--|---|

2) UPDATED SIGNAL LAYOUT PER UTILITY CONFLICT FIELD ADJUSTMENTS, ADDED SIGNAL POST BASE 1 DETAIL 02/13/06
 1) ADDED CURB & GUTTER SAW CUT NOTES, SIDEWALK CROSS SLOPE NOTES, REVISED CROSS WALK STRIPING, ADDED PEDESTRIAN SIGN INFORMATION, AND TRAFFIC CONTROL DETAIL 11/22/04

WINGHAVEN BLVD.— PEDESTRIAN SIGNAL CROSSING

SIGNAL PLAN

Stock & Associates
Consulting Engineers, Inc.

257 Chesterfield Business Parkway
St. Louis, MO 63005
PH. (636) 530-9100
FAX (636) 530-9130
e-mail: general@stockassoc.com
Web: www.stockassoc.com

| | | | |
|-------------------------|----------------|--------------------|----------------|
| DRAWN BY: S.J.K. | DATE: 08/27/04 | CHECKED BY: D.P.B. | DATE: 08/27/04 |
| JOB NUMBER: 202-2777.15 | | SHEET: C2 of 7 | |

STOCK AND ASSOCIATES CONSULTING ENGINEERS, INC. AND THE UNDERSIGNED ENGINEER HAVE NO RESPONSIBILITY FOR SERVICES PROVIDED BY OTHERS TO IMPLEMENT THE IMPROVEMENTS SHOWN ON THIS PLAN AND ALL OTHER DRAWINGS WHERE THE UNDERSIGNED ENGINEER'S SEAL APPEARS. THE CONSTRUCTION MEANS AND METHODS ARE THE SOLE RESPONSIBILITY OF THE OWNER AND CONTRACTOR. STOCK AND ASSOCIATES CONSULTING ENGINEERS, INC. HAS NO RESPONSIBILITY TO VERIFY FINAL IMPROVEMENTS AS SHOWN ON THIS PLAN UNLESS SPECIFICALLY ENGAGED AND AUTHORIZED TO DO SO BY THE OWNER OR CONTRACTOR.

0:\DRAW2700\2022777\TIMBER MEADOW\c-02.DWG
Feb 14, 2006 - 7:44am

UTILITIES LOCATE
CALL MoDOT 314-340-4100

STATE OF MISSOURI
REGISTERED PROFESSIONAL ENGINEER
GEORGE MICHAEL STOCK
NUMBER E-25116