

WINGHAVEN PHASE I
IMPROVEMENT PLANS FOR
BLACK HAWK VILLAGE

PART OF U.S. SURVEY NO. 1669
AND PART OF SECTIONS 11 & 12
TOWNSHIP 46 NORTH, RANGE 2 EAST
CITY OF O'FALLON, MISSOURI

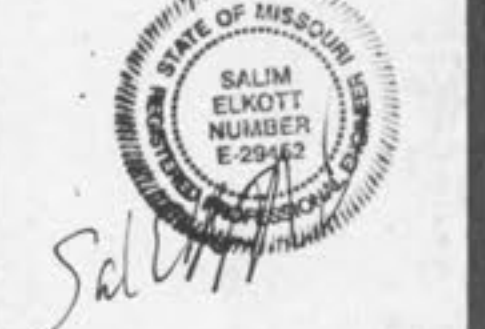
Kuhlmann
Design
Group, Inc.

#6 Westbury Drive
St. Charles, Missouri 63301
Tel: (314) 946-5566

Dr. Louis M. Kuhlmann
Baltimore, Illinois
Dr. Charles M. Kuhlmann
St. Charles, Missouri

KdG

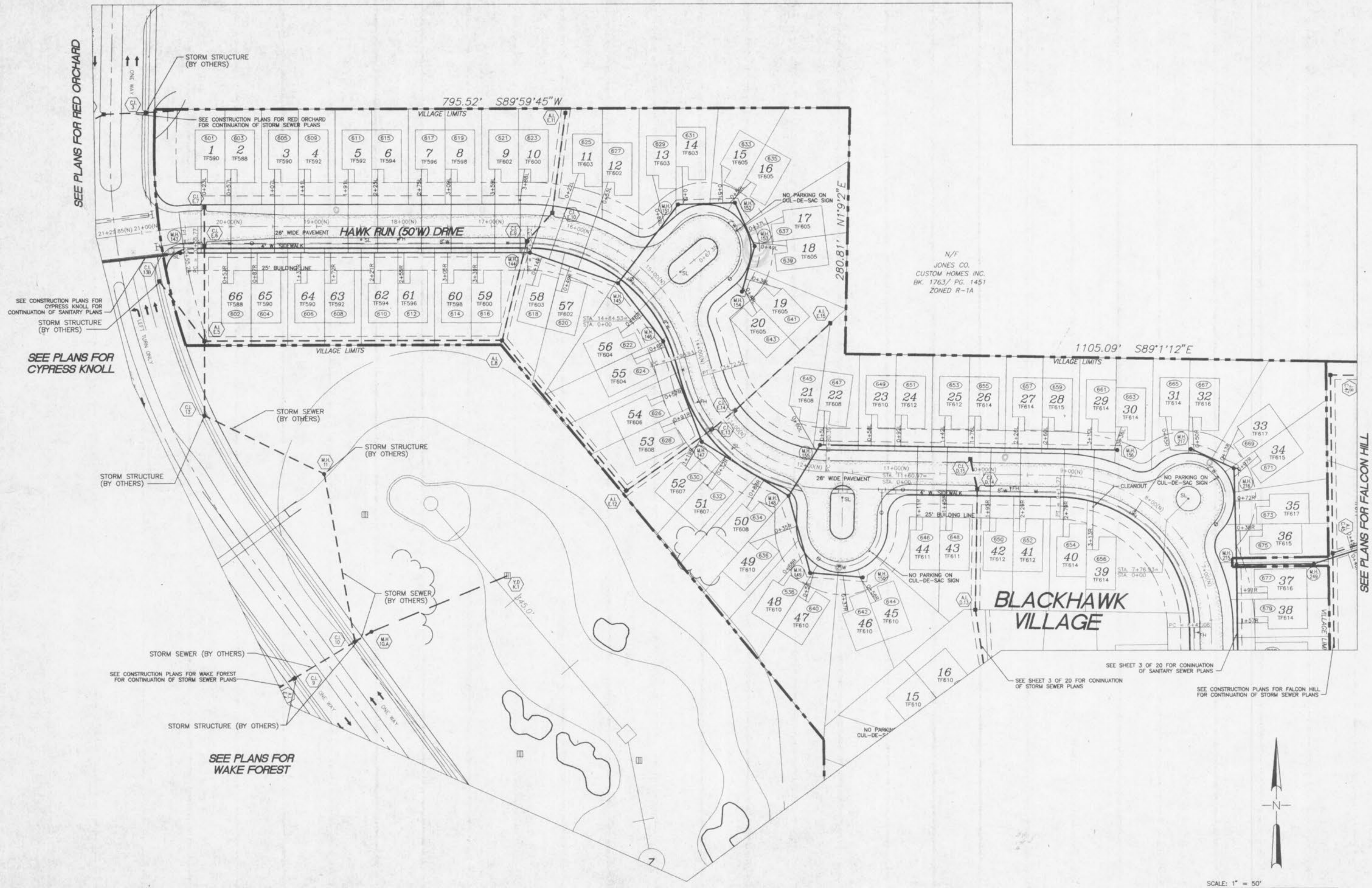
DISCLAIMER OF RESPONSIBILITY
I hereby specify that the documents intended to be authorized by my seal are limited to this sheet, and I hereby disclaim any responsibility for all other drawings, specifications, estimates, reports or other documents or instruments relating to or intended to be used for any part or parts of the architectural or engineering project or survey.



NO.	DATE	BY
1	06/24/98	PER DCSD
PROJECT NO.	CONTRACT NO.	
970231	0002	
DRAWN	CHECKED	
FPB	SYE	
DATE		
	05/29/98	

BLACK HAWK
SITE PLAN

SHEET 2 OF 20
C11



970231.0001, WINGHAVEN PHASE I, BLACK HAWK VILLAGE, 11/15/98, P1411249, BY: JEPM, B1