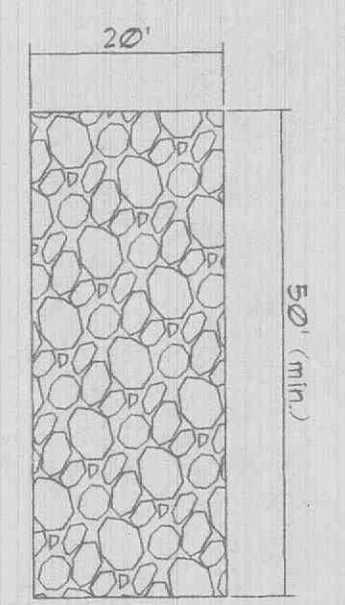
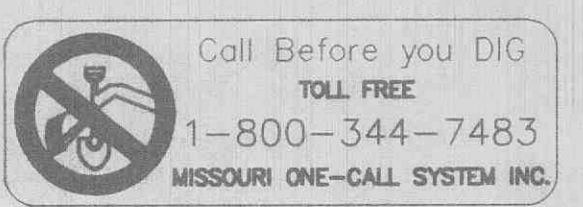


**NOTES:**  
 PROVIDE CONCRETE HANDICAP RAMP WHERE TRAIL INTERSECTS ACCESS DRIVES OR STREETS OR WHERE TRAIL INTERSECTS WITH CURBING (SEE PLAN).  
 PROVIDE STRIPING OR A COLORED TEXTURED PAVEMENT THROUGH THE ACCESS DRIVES OR STREETS INTO THE DEVELOPMENT.  
 MAXIMUM SLOPE OF THE PATH SHALL NOT EXCEED 8% AND 2% CROSS SLOPE PER CITY OF ST. LOUIS SPECIFICATIONS.  
 THE TRAIL SHALL BE CONSTRUCTED WITH A CONSISTENT SLOPE WITH VERTICAL CURVES A MINIMUM OF 50' IN LENGTH. AFTER FINAL COMPRESSION, THE SURFACE SHALL BE SMOOTH AND TRUE TO THE ESTABLISHED CROWN AND GRADE. ANY LOW OR DEFECTIVE PLACES SHALL IMMEDIATELY BE REMEDIED BY CUTTING OUT THE COURSE AT SUCH SPOTS AND REPLACING IT WITH FRESH HOT MIXTURE, WHICH SHALL BE IMMEDIATELY COMPACTED TO CONFORM WITH THE SURROUNDING AREA AND SHALL BE THOROUGHLY BOND TO IT. THE FINISHED PAVEMENT SHALL BE SET FREE FROM DEPRESSIONS EXCEEDING ONE-EIGHTH INCH AS MEASURED WITH A TEN-FOOT STRAIGHT EDGE PARALLEL TO THE CENTERLINE OF THE TRAIL.

**MULTI-USE PATH DETAIL**  
 NTS

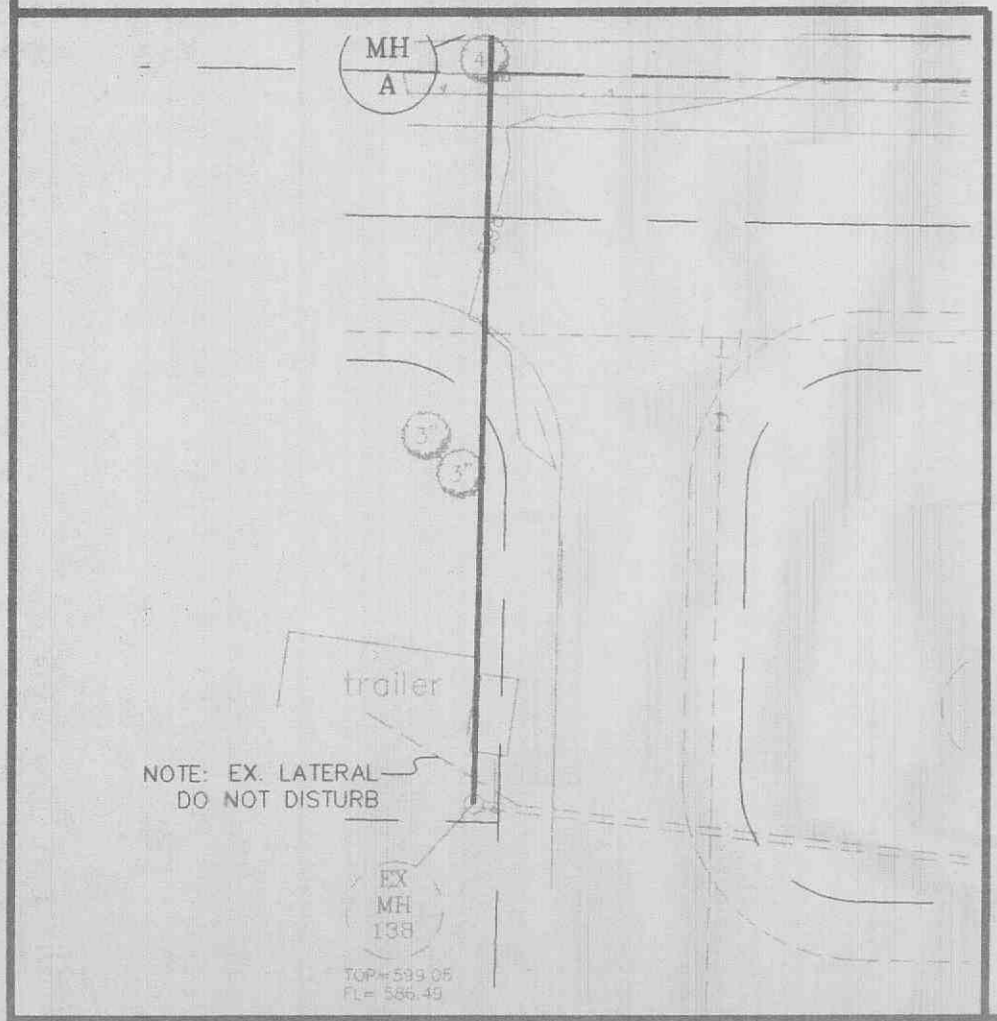


**Gravel Construction Entrance**  
 -min. thickness: 6 in.  
 -aggregate size: 2-3 in.  
 -underlay with Geotextile Fabric

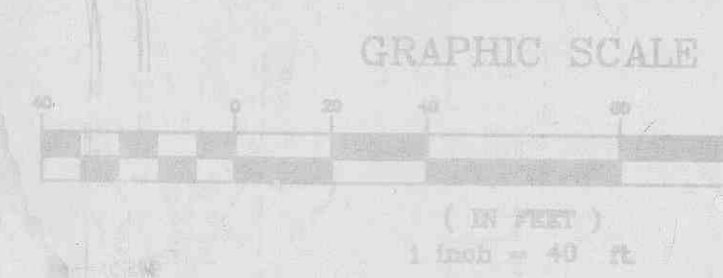
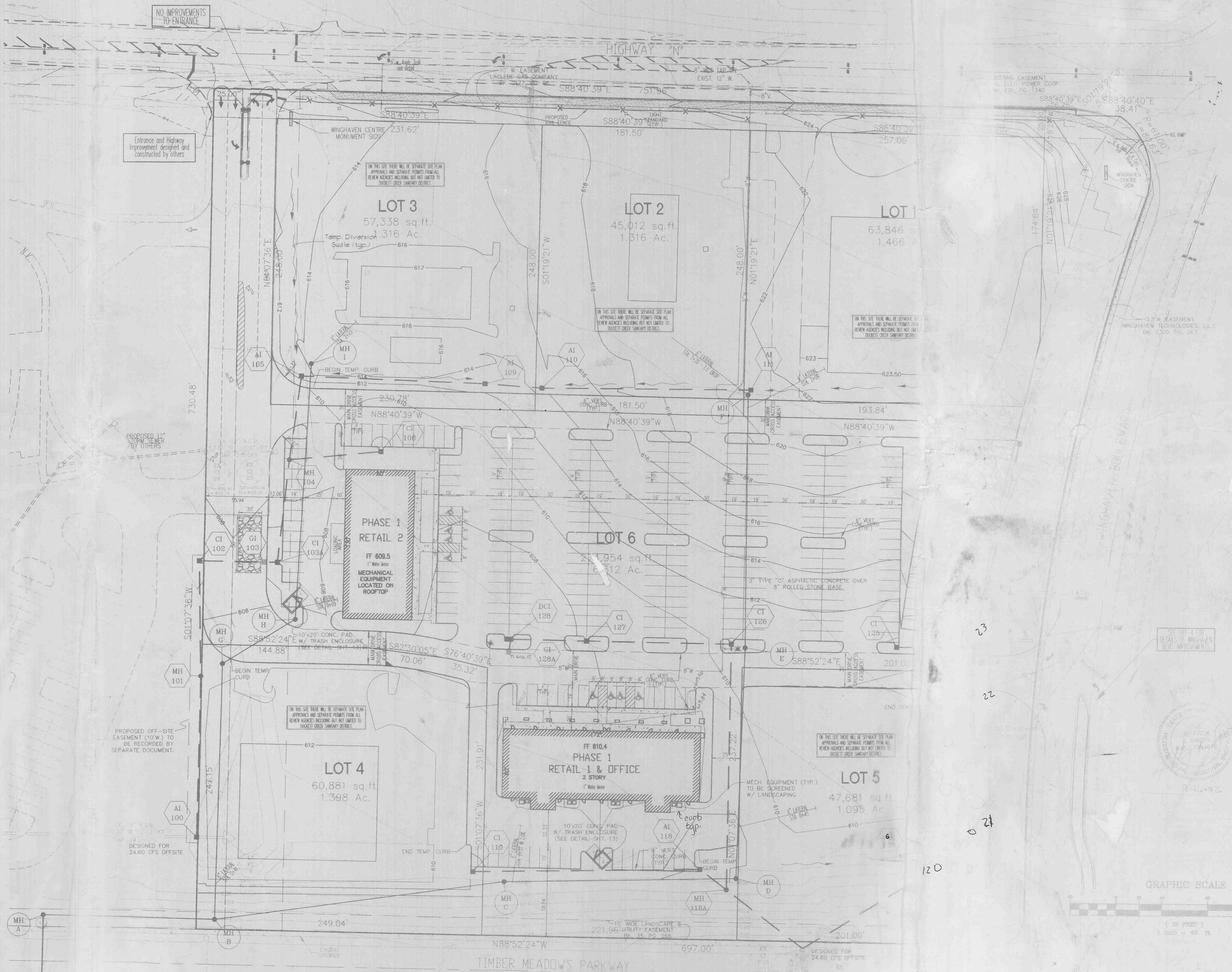


Underground facilities, structures and utilities have been plotted from available surveys, records and information, and therefore, do not necessarily reflect the actual existence, non-existence, size, type, number of, or location of these facilities, structures, and utilities. The Contractor shall be responsible for verifying the actual location of all underground facilities, structures, and utilities, either shown or not shown on these plans. The underground facilities, structures, and utilities shall be located in the field prior to any grading, excavation or construction of improvements. These provisions shall in no way obviate any party from complying with the Underground Facility Safety and Damage Prevention Act, Chapter 319, RSMO.

**OFF-SITE**



NOTE: EX LATERAL DO NOT DISTURB



NORTH

3