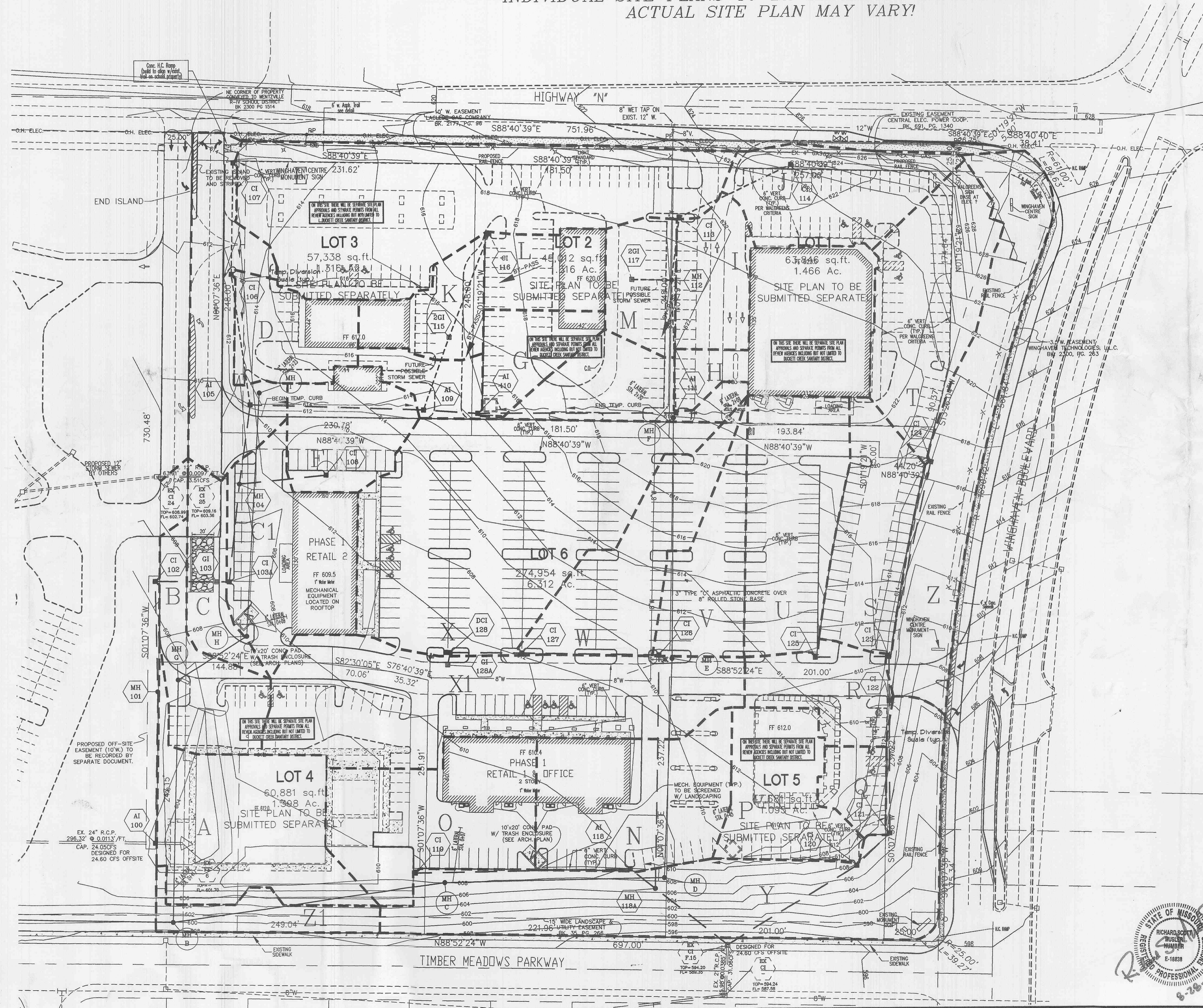


LOTS 1 - 5 SHOWN FOR REFERENCE ONLY!
 INDIVIDUAL SITE PLANS TO BE SUBMITTED SEPARATELY!
 ACTUAL SITE PLAN MAY VARY!



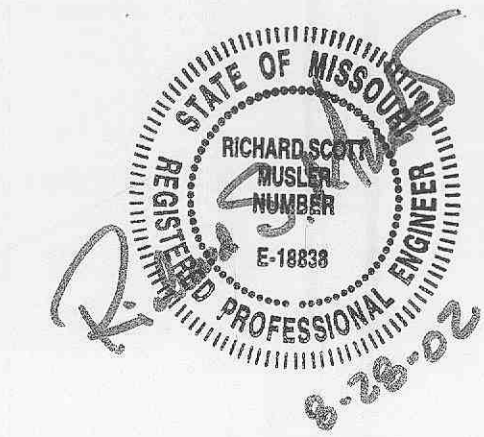
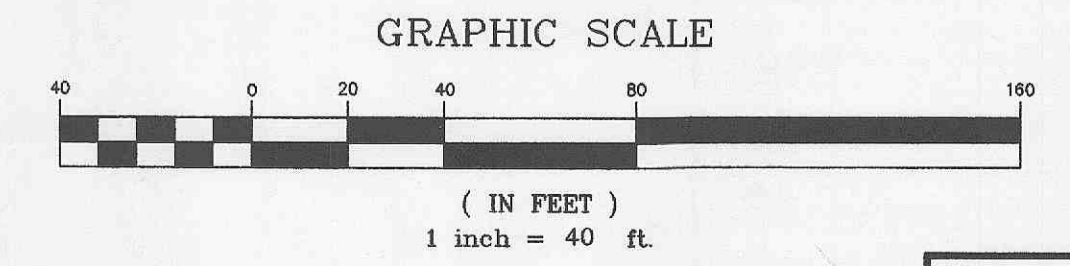
A (TO AI 100)	(0.52Ac)(3.85) + (0.27Ac)(1.87) = 2.51 c.f.s.
B (TO CI 102)	(0.25Ac)(3.85) = 0.96 c.f.s.
C (TO GI 103)	(0.16Ac)(3.85) = 0.62 c.f.s.
C1 (TO CI 103A)	(0.43Ac)(3.85) = 1.66 c.f.s.
D (TO CI 106)	(0.22Ac)(3.85) = 0.85 c.f.s.
E (TO CI 107)	(1.01Ac)(3.85) = 3.89 c.f.s.
F (TO CI 108)	(0.26Ac)(3.85) = 1.00 c.f.s.
G (TO CI 110)	(0.16Ac)(3.85) = 0.62 c.f.s.
H (TO CI 111)	(0.42Ac)(3.85) = 1.62 c.f.s.
I (TO CI 113)	(0.20Ac)(3.85) = 0.77 c.f.s.
J (TO CI 114)	(0.35Ac)(3.85) = 1.35 c.f.s.
K (TO FUTURE 2GI 115)	(0.18Ac)(3.85) = 0.69 c.f.s.
L (TO FUTURE CI 116)	(0.18Ac)(3.85) = 0.69 c.f.s.
M (TO FUTURE 2GI 117)	(0.17Ac)(3.85) = 0.65 c.f.s.
N (TO AI 118)	(0.49Ac)(3.85) = 1.89 c.f.s.
O (TO CI 119)	(0.50Ac)(3.85) = 1.93 c.f.s.
P (TO CI 120)	(0.31Ac)(3.85) = 1.19 c.f.s.
Q (TO CI 121)	(0.10Ac)(3.85) = 0.39 c.f.s.
R (TO CI 122)	(0.21Ac)(3.85) = 0.81 c.f.s.
S (TO CI 123)	(0.33Ac)(3.85) = 1.27 c.f.s.
T (TO CI 124)	(0.46Ac)(3.85) = 1.77 c.f.s.
U (TO CI 125)	(0.45Ac)(3.85) = 1.73 c.f.s.
V (TO CI 126)	(0.37Ac)(3.85) = 1.42 c.f.s.
W (TO CI 127)	(0.37Ac)(3.85) = 1.42 c.f.s.
X (TO DCI 128)	(1.42Ac)(3.85) = 5.47 c.f.s.
X1 (TO GI 128A)	(0.87Ac)(3.85) = 3.35 c.f.s.
Y (TO EX CI F.15)	(0.92Ac)(1.87) = 1.72 c.f.s.
Z (TO WINGHAVEN BLVD)	(0.05Ac)(3.85) + (0.52Ac)(1.87) = 1.16 c.f.s.
Z1 (TO TIMBER MEADOWS)	(0.14Ac)(1.87) = 0.26 c.f.s.

NOTES

- AI 105 & AI 109 ARE FORECAST TO BE CONVERTED TO MANHOLES UPON FURTHER LOT DEVELOPMENT.
- AI 110 & AI 111 ARE FORECAST TO BE CONVERTED TO CURB INLETS UPON FURTHER LOT DEVELOPMENT.
- UNDER THIS PLAN SET, AI 105, AI 109, AI 110 & AI 111 WILL CAPTURE OUTLOT GRASS AREAS.

Call Before you DIG
 TOLL FREE
 1-800-344-7483
 MISSOURI ONE-CALL SYSTEM INC.

Underground facilities, structures and utilities have been plotted from available surveys, records and information, and therefore, do not necessarily reflect the actual existence, non-existence, size, type, number of, or location of these facilities, structures, and utilities. The Contractor shall be responsible for verifying the actual location of all underground facilities, structures, and utilities, either shown or not shown on these plans. The underground facilities, structures, and utilities shall be located in the field prior to any grading, excavation or construction of improvements. These provisions shall in no way absolve any party from complying with the Underground Facility Safety and Damage Prevention Act, Chapter 319, RSMO.



NOTE: LOT 4 IMPROVEMENTS BY OTHERS. DEPICTED HERE FOR REFERENCE ONLY!
 O'Fallon File No. 9831.37.01