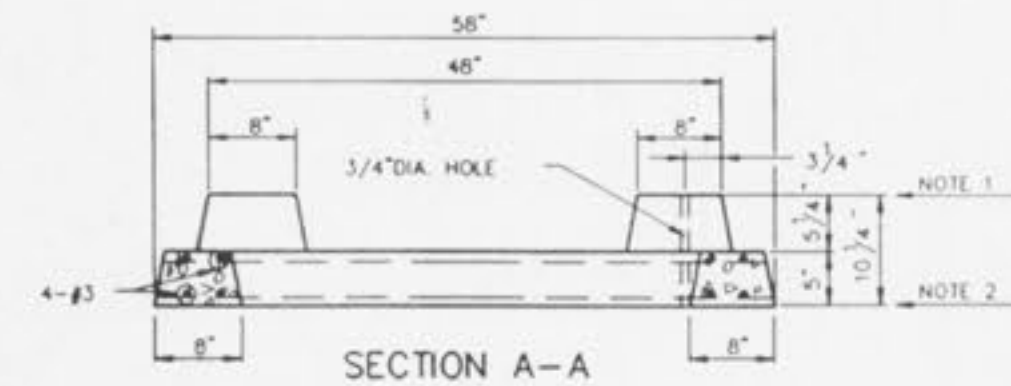
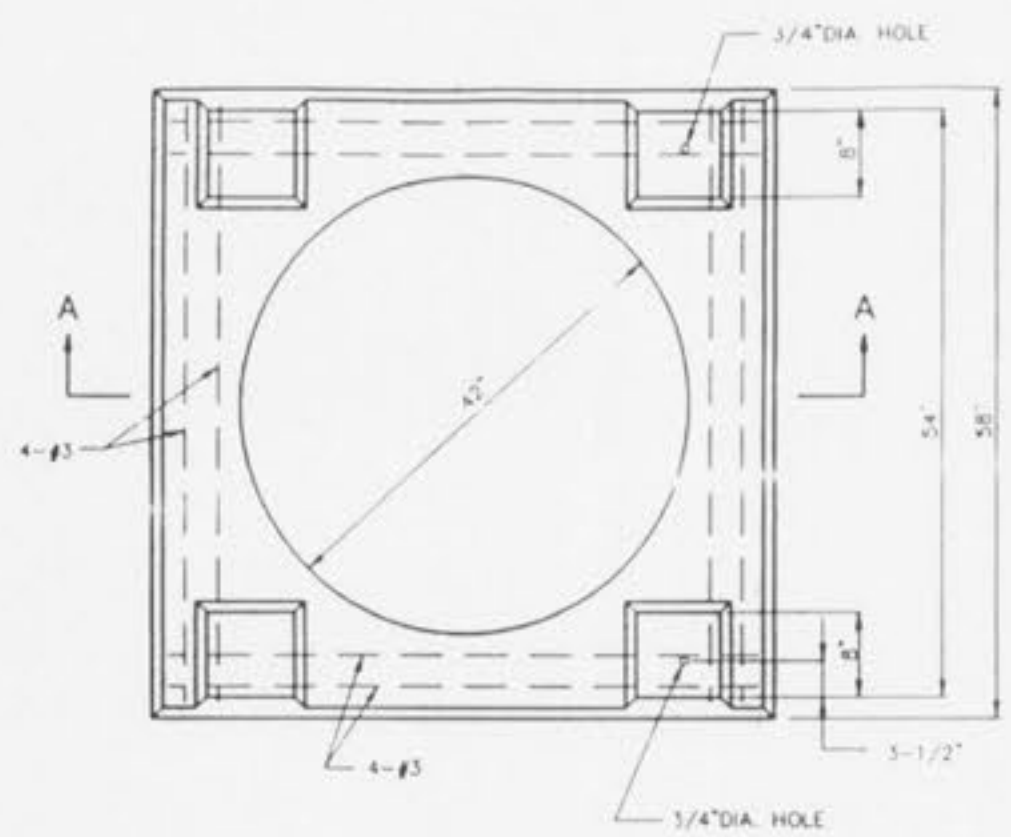
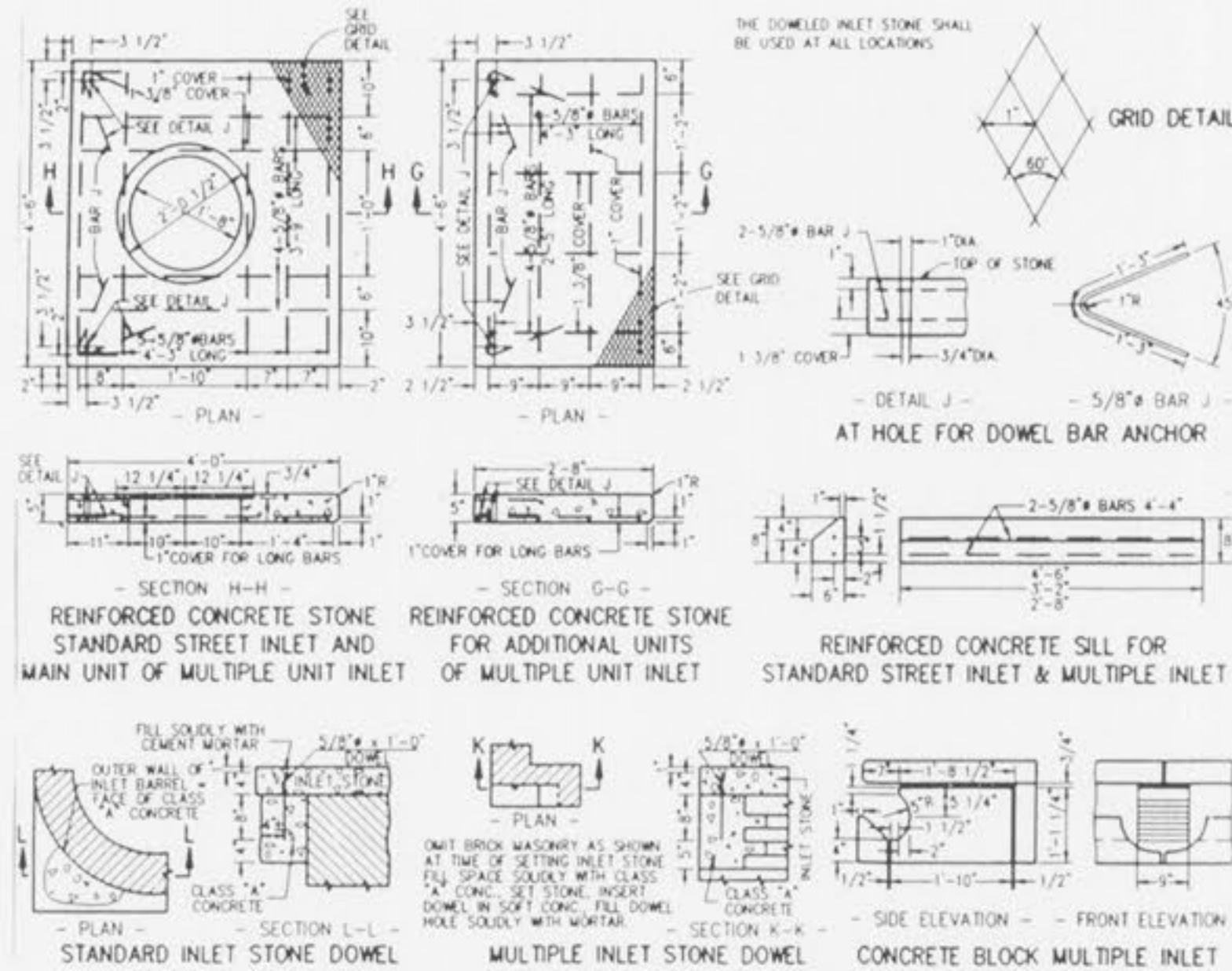


PRE-CAST CONCRETE UNIT FOR SINGLE STREET INLET

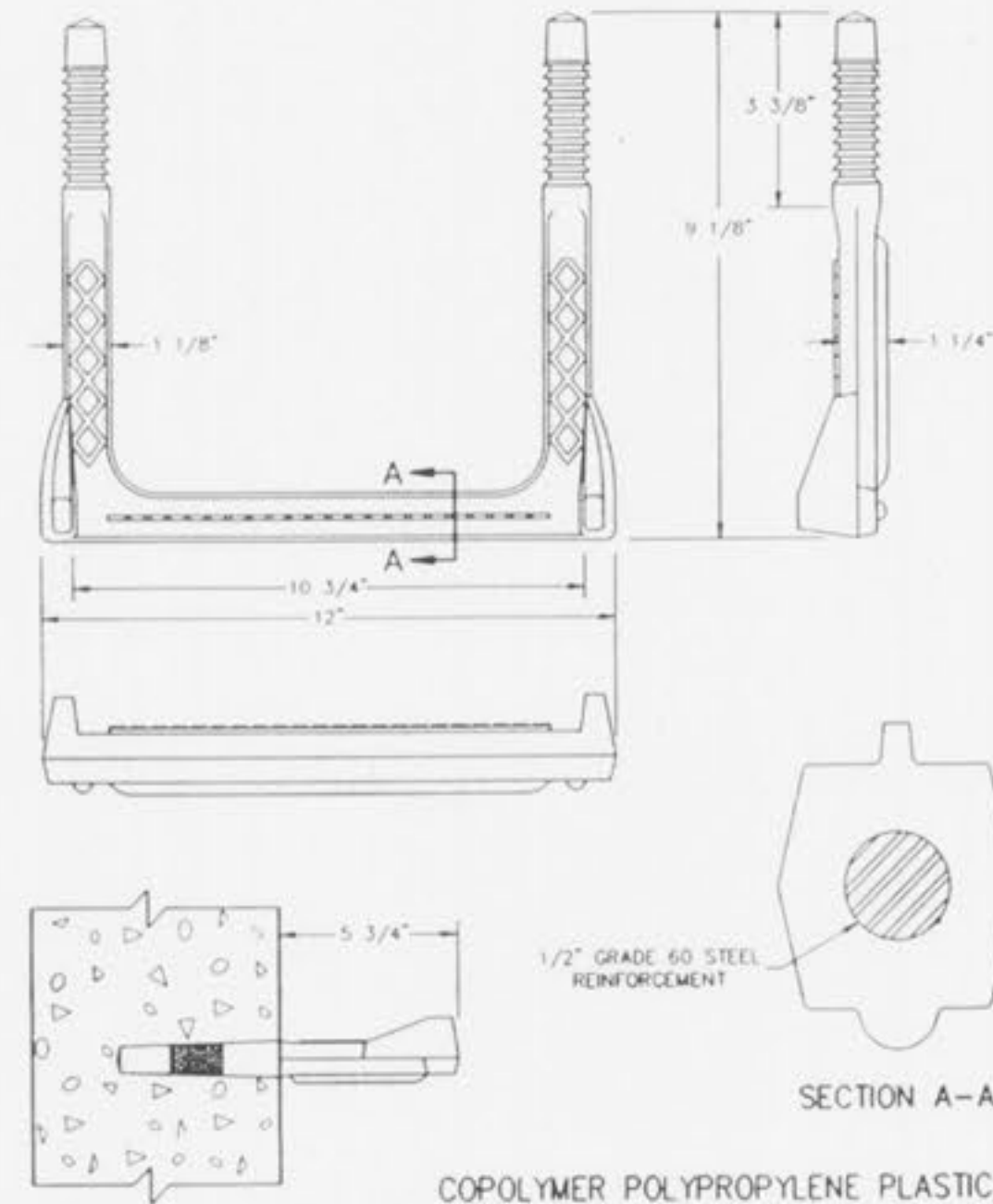


- NOTES
1. SET STANDARD INLET STONE IN 3/4" MORTAR BED AND DOWEL WITH 5/8" 1"-0" LONG PINS AND GROUT.
 2. RAISE TO FINAL GRADE WITH COURSES OF BRICK AND SET THE UNIT TO BASE WITH 3/4" MORTAR BED.
 3. THIS UNIT IS TO BE USED WITH 42" I.D. CONCRETE OR BRICK BASE.
 4. 4000 P.S.I. CONCRETE IS REQUIRED.

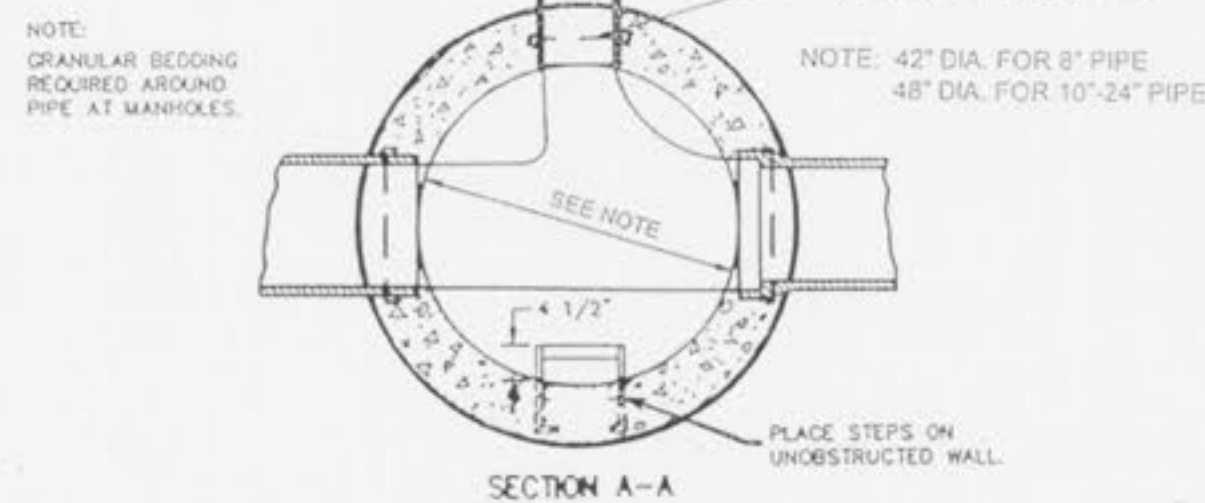
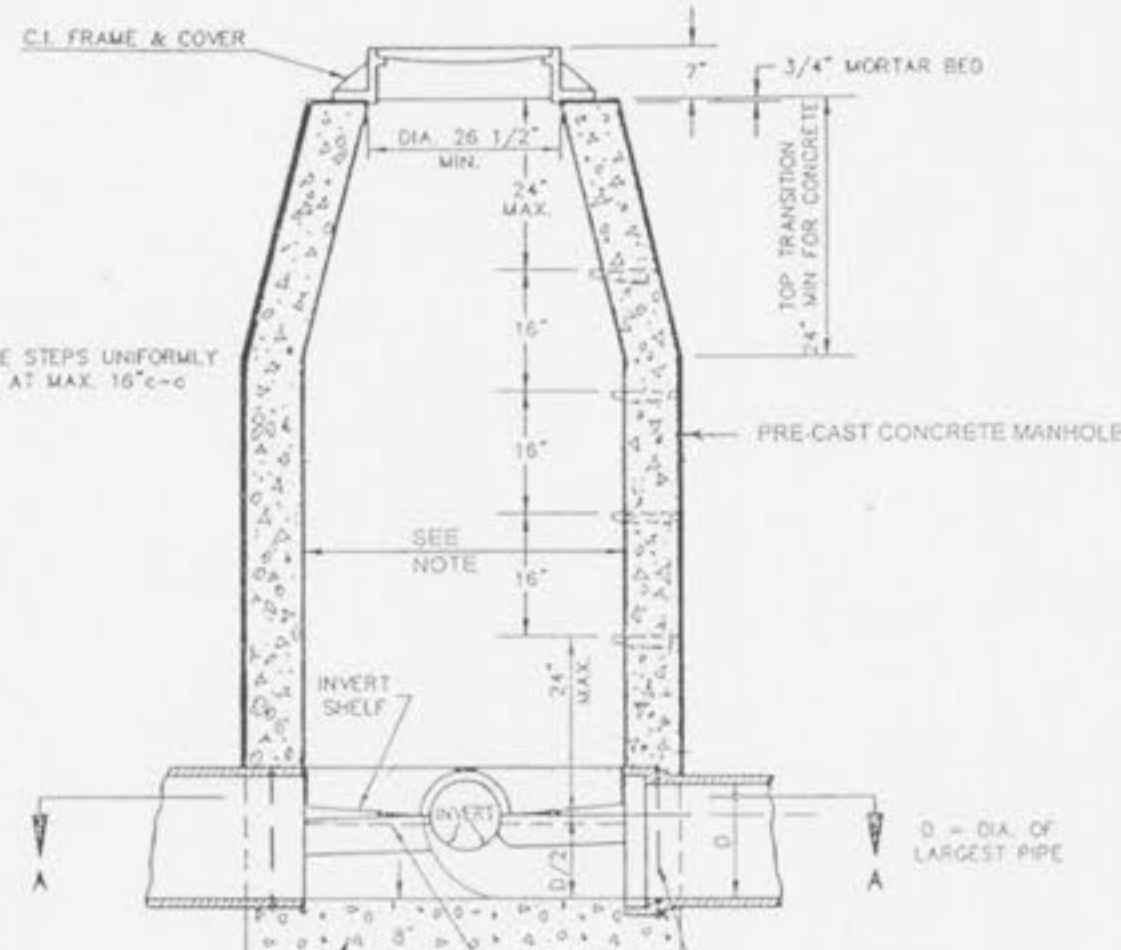
PRE-CAST CONCRETE UNIT FOR 4 WAY AREA INLET



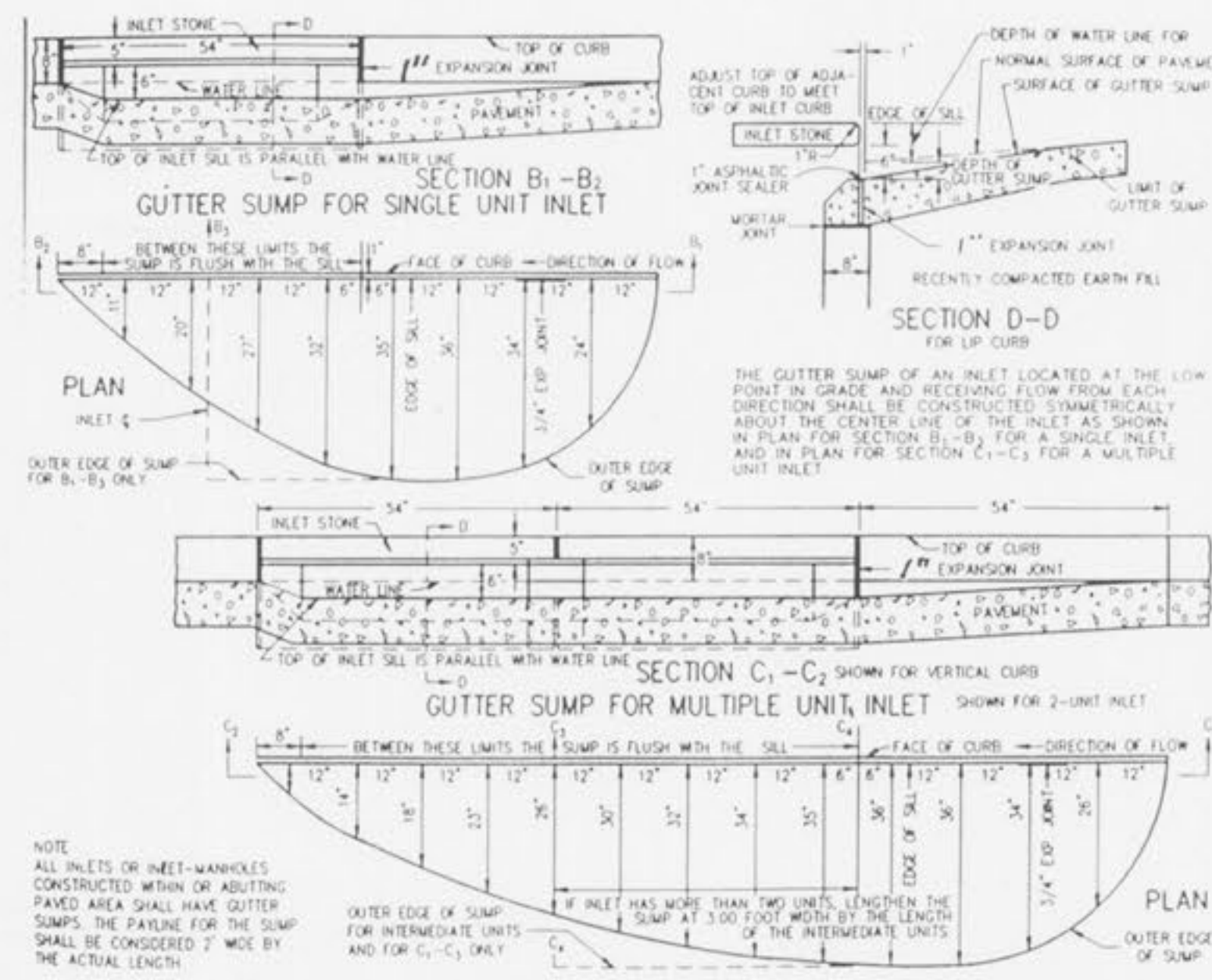
STANDARD - INLET STONES, BLOCKS & DESIGN DETAILS



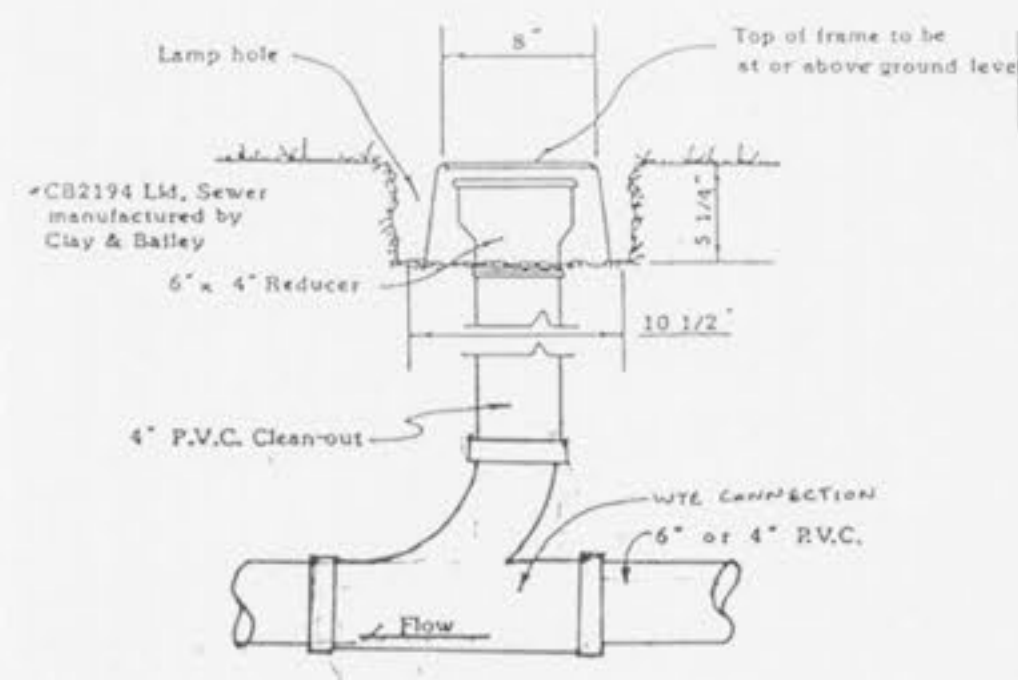
MANHOLE STEP FOR PRECAST MANHOLE



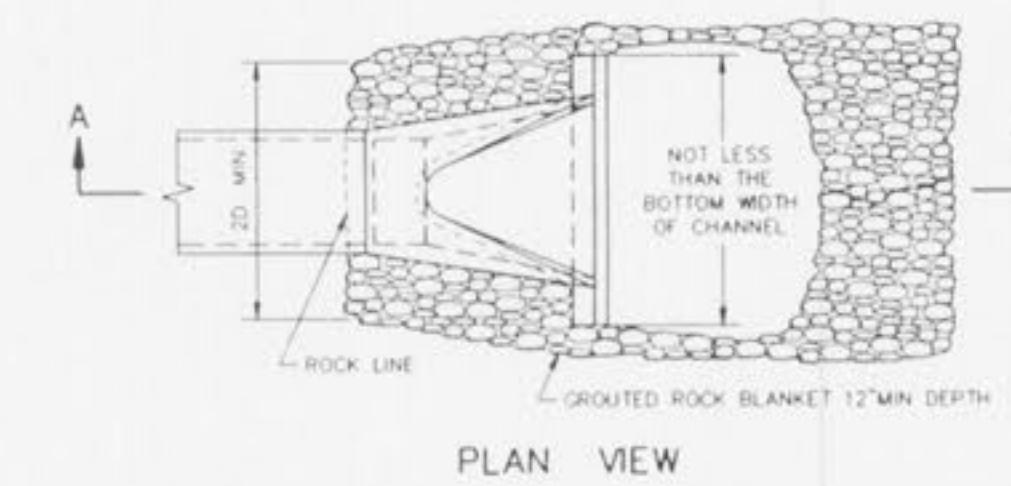
LINE MANHOLE PIPE SEWERS 8"-24" DIA.



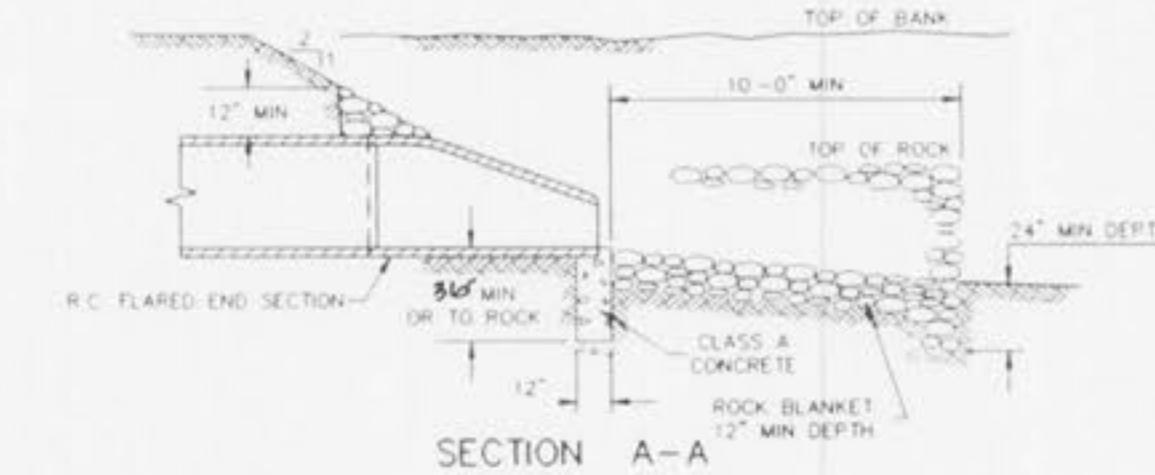
GUTTER SUMPS FOR VERTICAL CURB



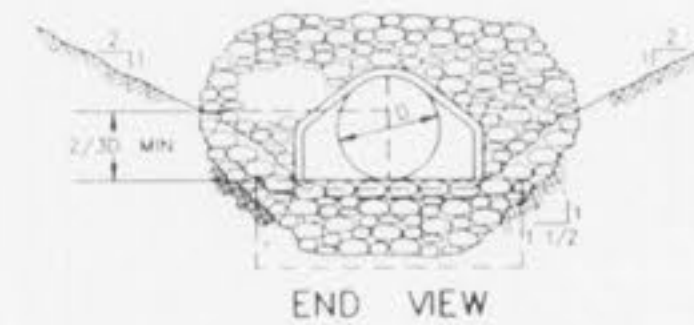
CLEAN-OUT DETAIL Not to Scale



PLAN VIEW

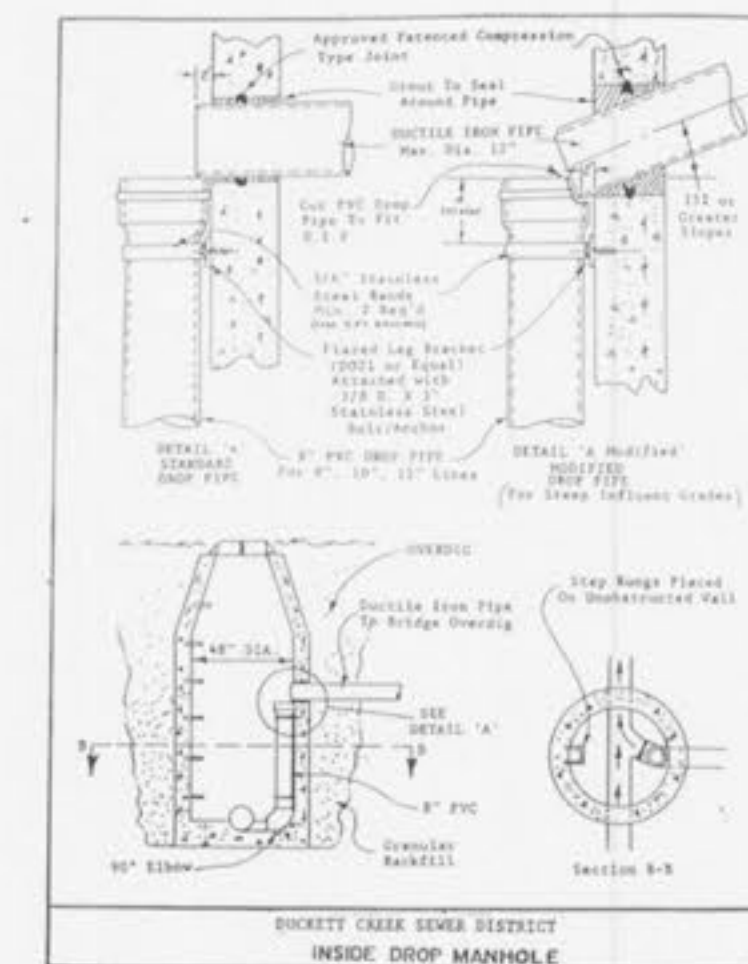


SECTION A-A

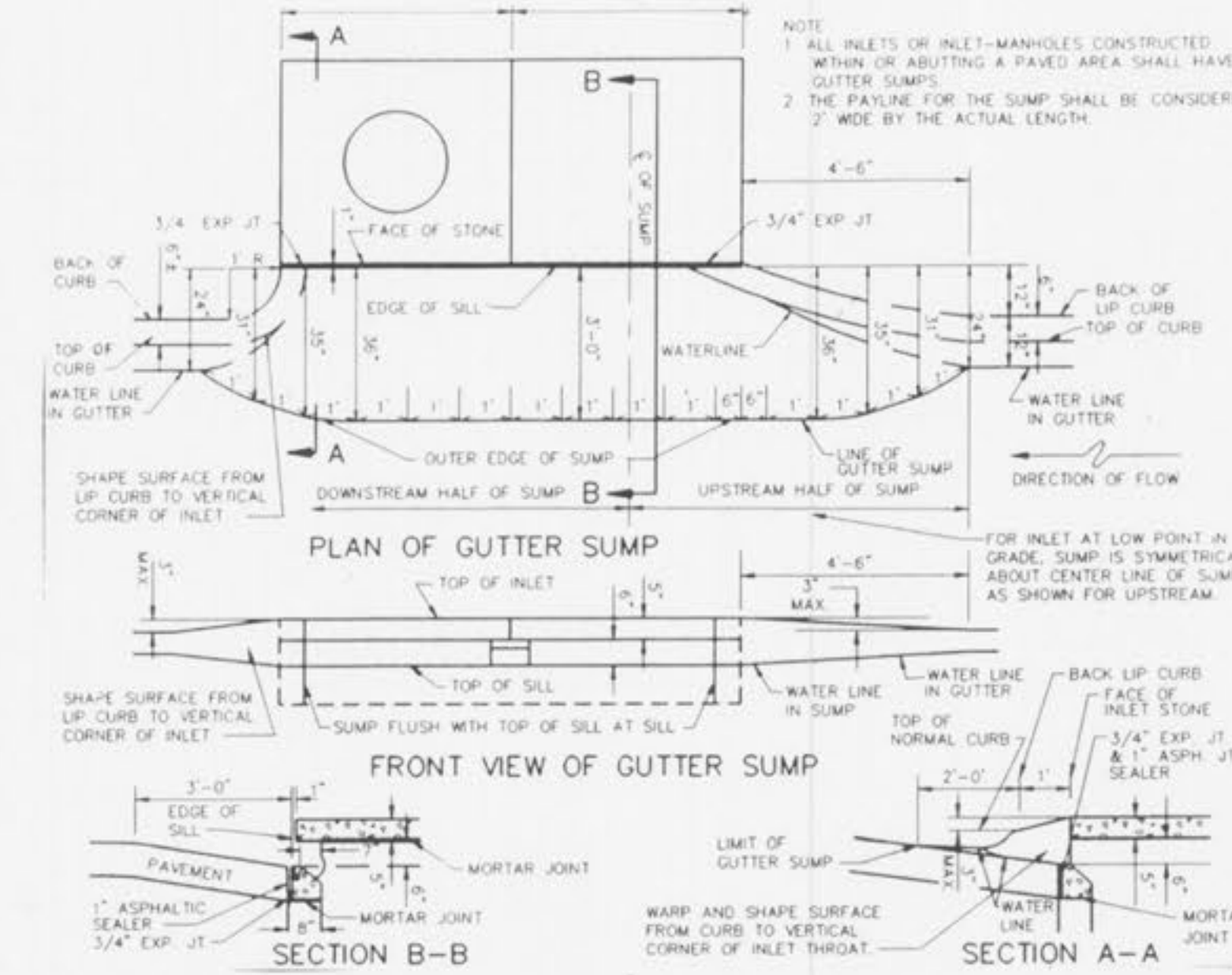


END VIEW

FLARED END SECTION



SECRET CURB SEWER RECEPTOR INSIDE DROP MANHOLE



PLAN OF GUTTER SUMP

FRONT VIEW OF GUTTER SUMP

SECTION B-B

SECTION A-A

WINGHAVEN PHASE I
IMPROVEMENT PLANS FOR
CYPRESS KNOLL VILLAGE

PART OF U.S. SURVEY NO. 1669
AND PART OF SECTIONS 11 & 12
TOWNSHIP 46 NORTH, RANGE 2 EAST
CITY OF FALLON, MISSOURI

Kuhlmann
Design
Group, Inc.

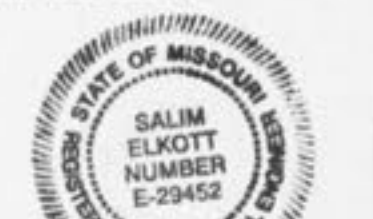
#6 Westbury Drive
St. Charles, Missouri 63301
Tel: (314) 946-5566

St. Louis, Missouri
Baltimore, Illinois
St. Charles, Missouri

K d G

DISCLAIMER OF RESPONSIBILITY

I hereby specify that the documents intended to be authenticated by my seal are limited to this sheet, and I hereby disclaim any responsibility for all other drawings, specifications, estimates, reports or other documents or instruments relating to or intended to be used for any part or parts of the architectural or engineering project or survey.



Salim Elkott

NO.	DATE	PROJECT NO.	CONTRACT NO.
1	6/24/99	00001	002
DRAWN		CHECKED	
DATE		DATE	
6/24/99		6/24/99	

CONSTRUCTION
DETAILS

SHEET 11 OF 13

Copyright © 1998 Kuhlmann Design Group, Inc. All rights reserved.