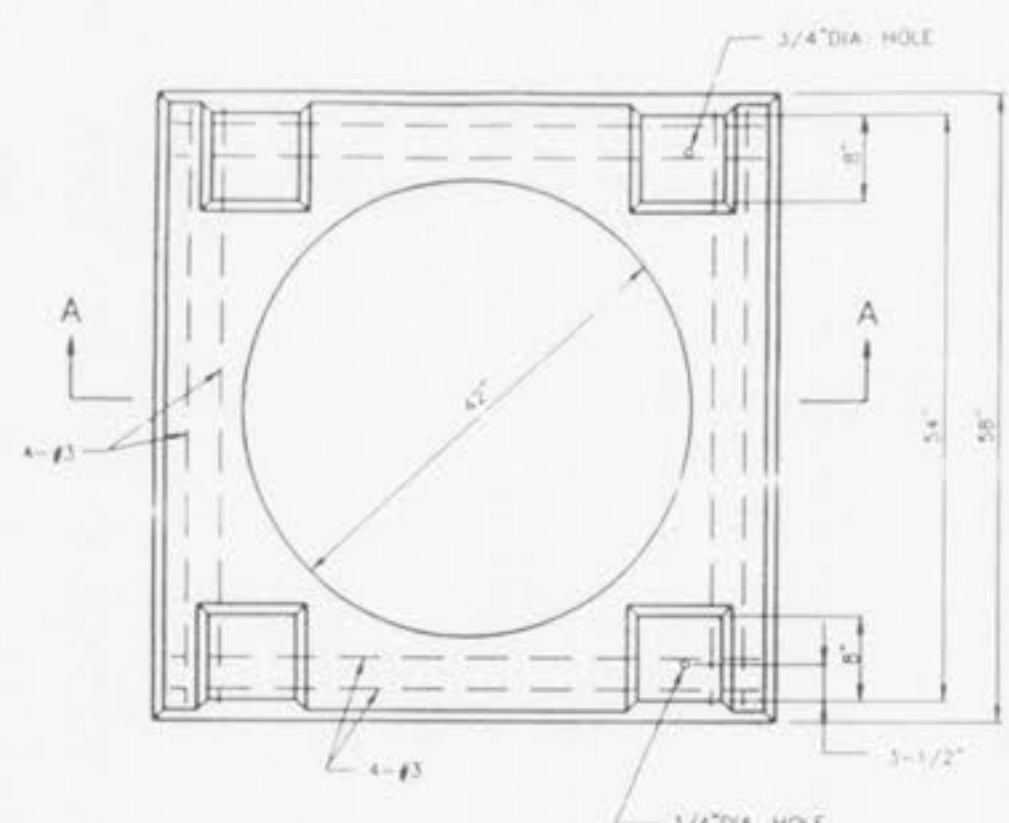


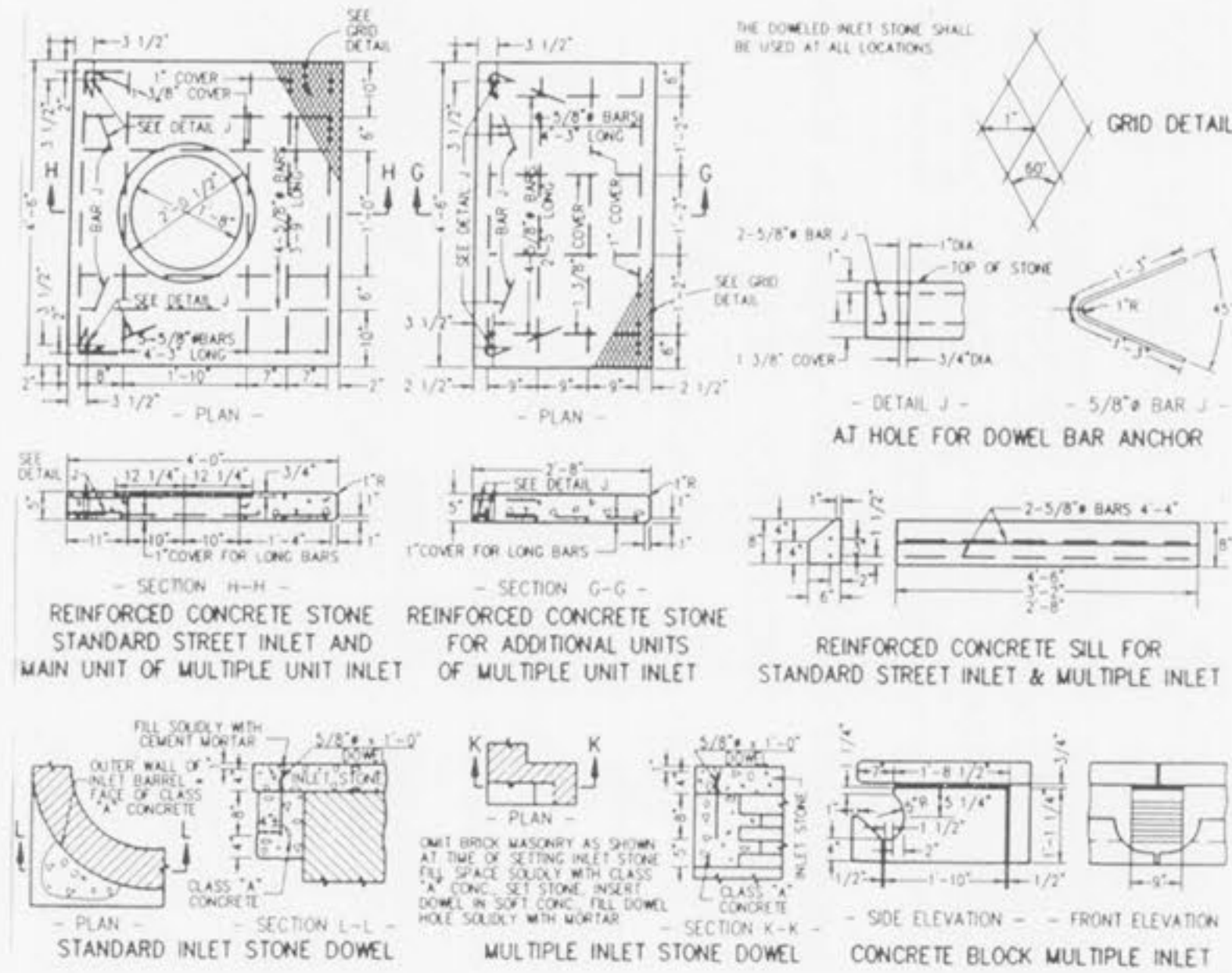
- NOTES
1. SET STANDARD INLET STONE IN 3/4" MORTAR BED AND DOWEL WITH 5/8" DIA. 1'-0" LONG PINS AND GROUT.
  2. RAISE TO FINAL GRADE WITH COURSES OF BRICK AND 3/4" MORTAR BED.
  3. THIS UNIT IS TO BE USED WITH 42" I.D. Poured in place concrete or brick base.
  4. 4000 P.S.I. CONCRETE REQUIRED.

SECTION A-A  
PRE-CAST CONCRETE UNIT FOR SINGLE STREET INLET

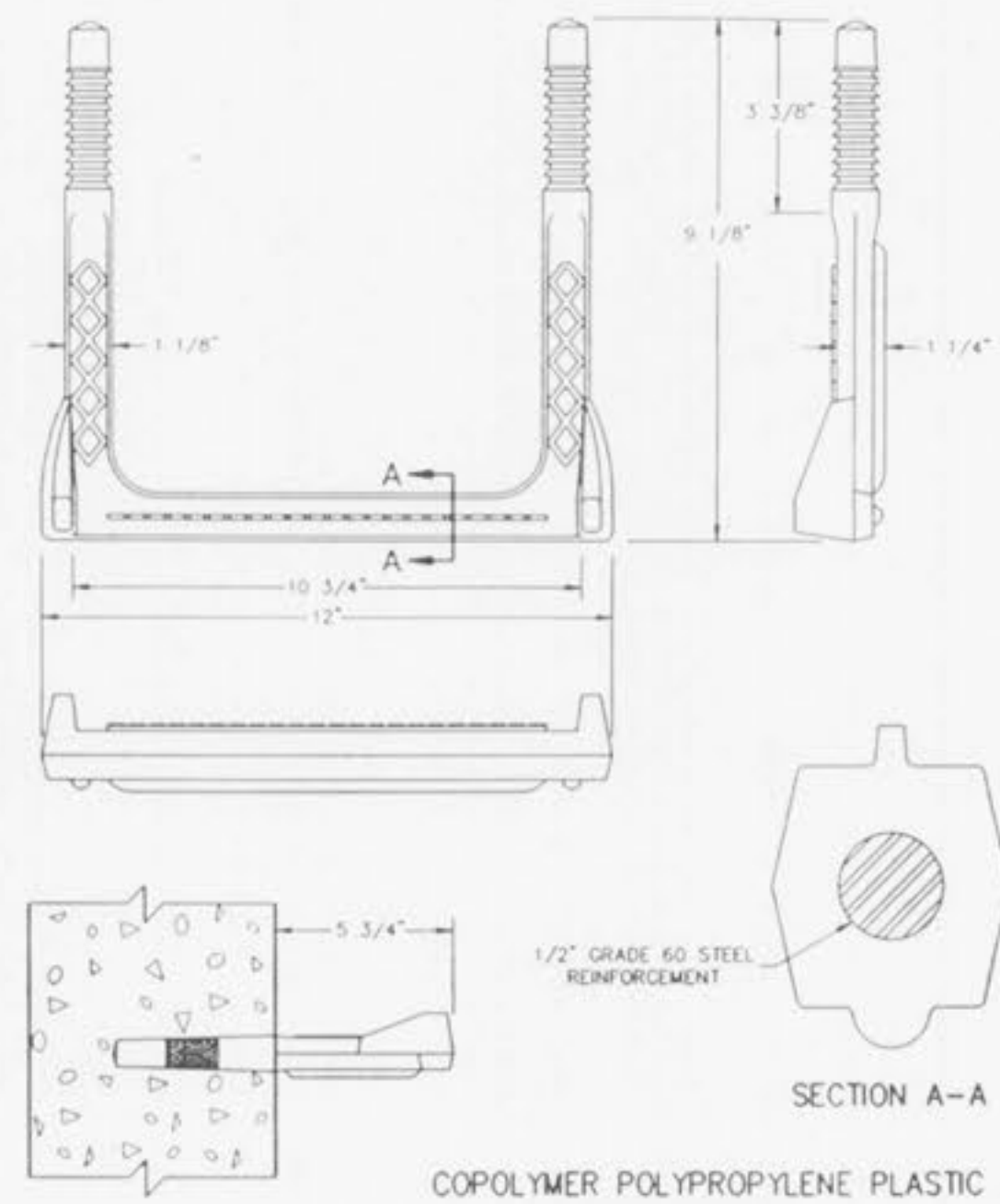


- NOTES
1. SET STANDARD INLET STONE IN 3/4" MORTAR BED AND DOWEL WITH 5/8" 1'-0" LONG PINS AND GROUT.
  2. RAISE TO FINAL GRADE WITH COURSES OF BRICK AND SET THE UNIT TO BASE WITH 3/4" MORTAR BED.
  3. THIS UNIT TO BE USED WITH 42" I.D. BASE.
  4. 4000 P.S.I. CONCRETE IS REQUIRED.

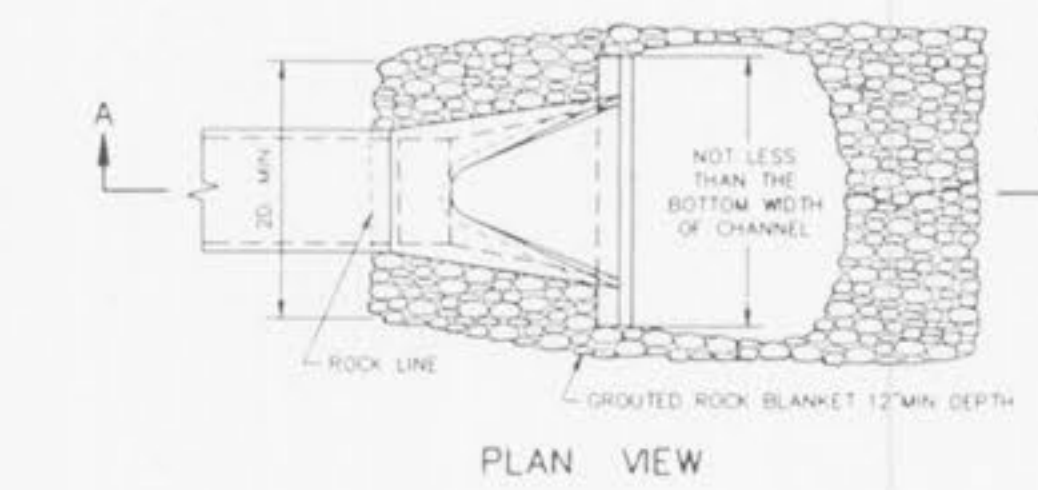
SECTION A-A  
PRE-CAST CONCRETE UNIT FOR 4 WAY AREA INLET



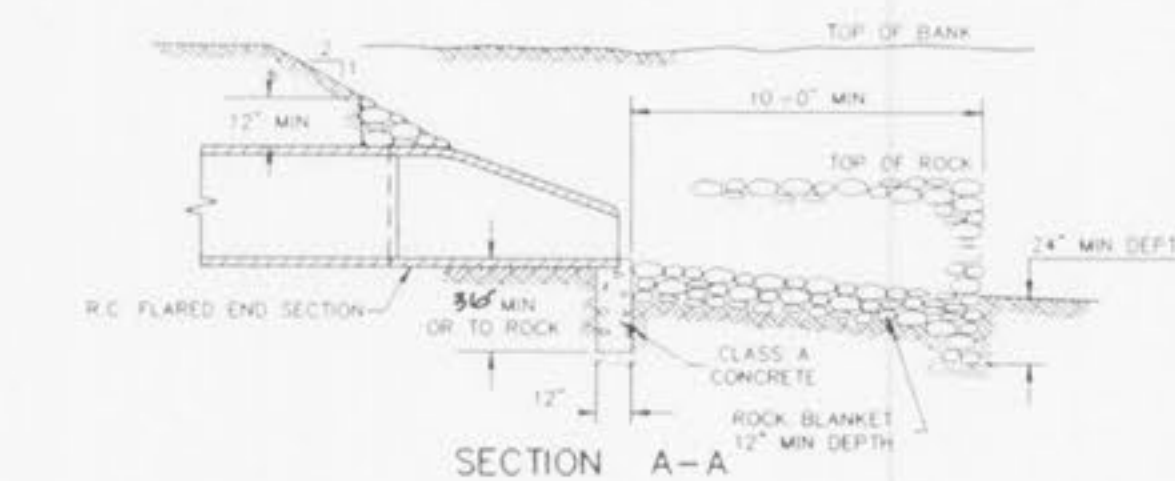
STANDARD - INLET STONES, BLOCKS & DESIGN DETAILS



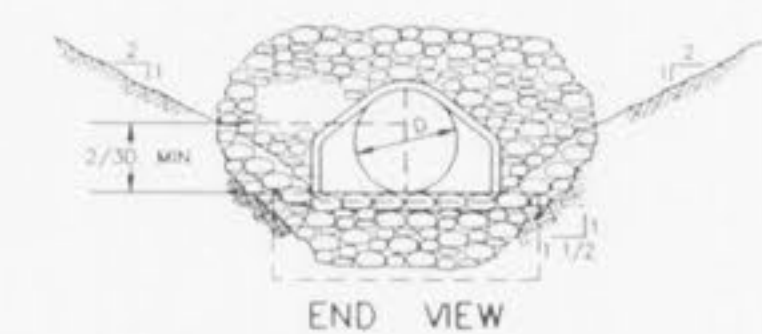
SECTION A-A  
COPOLYMER POLYPROPYLENE PLASTIC



PLAN VIEW



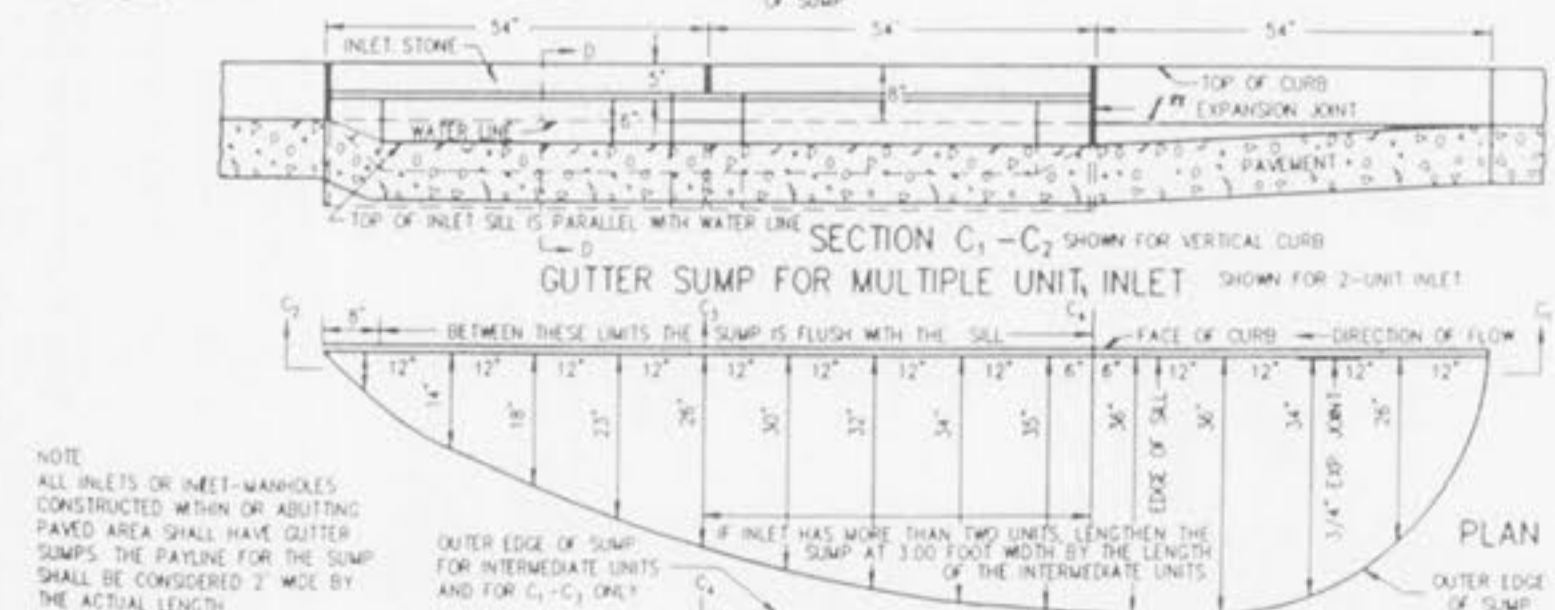
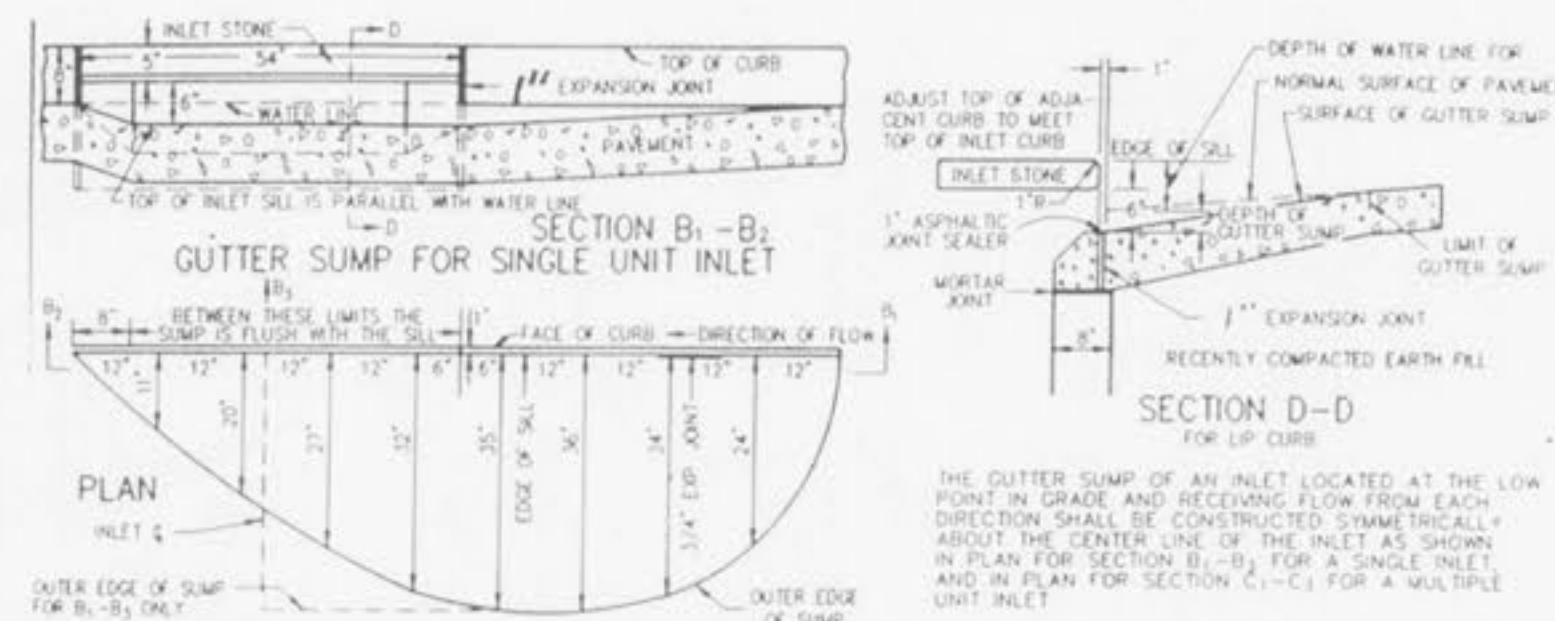
SECTION A-A



END VIEW

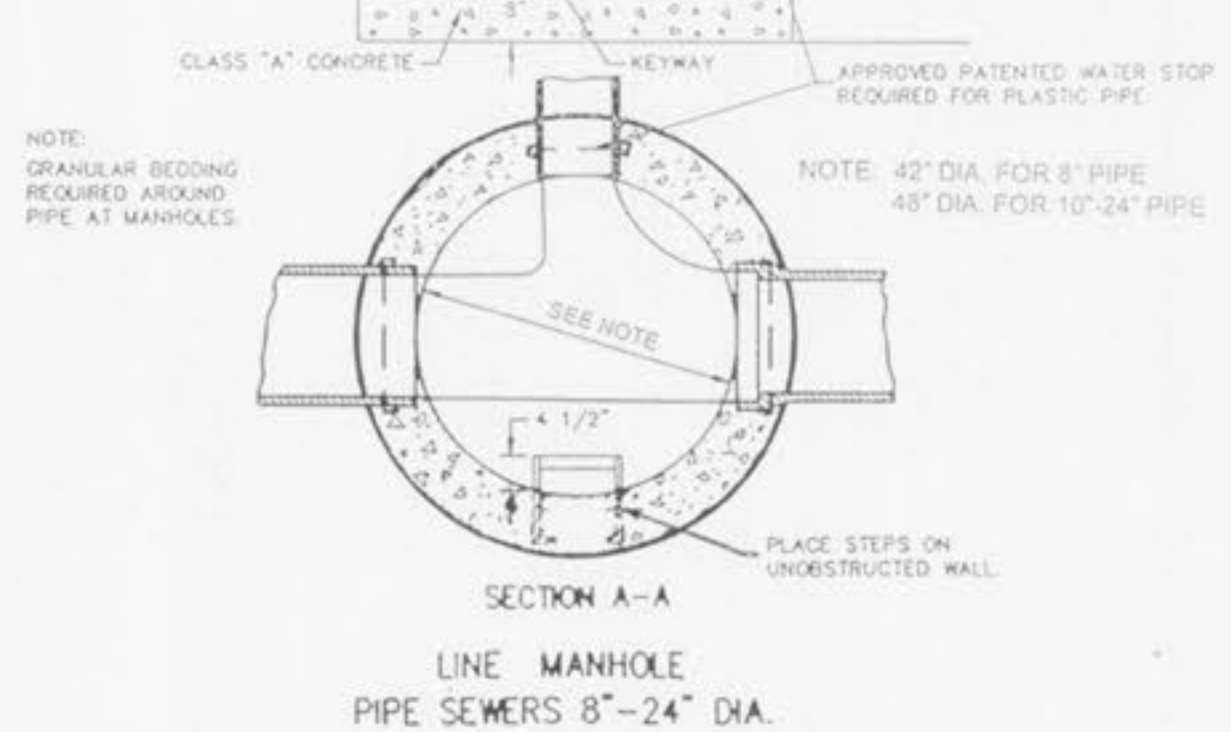
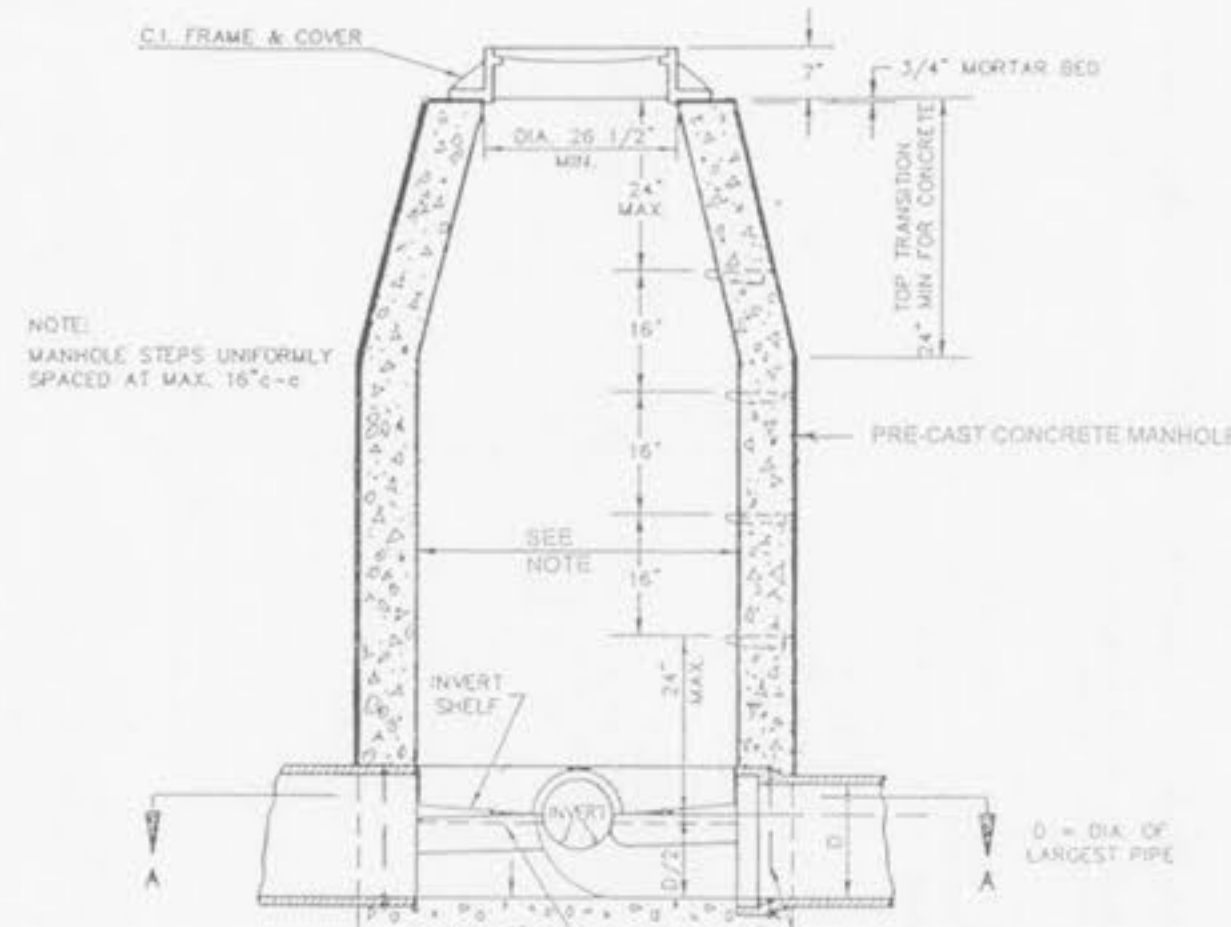
FLARED END SECTION

- NOTES
1. TO BE USED AT INTAKE AND DISCHARGE END OF PIPE. GRADE OF ROCK BLANKET TO BE ADJUSTED ACCORDINGLY.
  2. GROUTED ROCK BLANKET REQUIRED.



SECTION B1-B2  
SECTION C1-C2  
GUTTER SUMPS FOR VERTICAL CURB

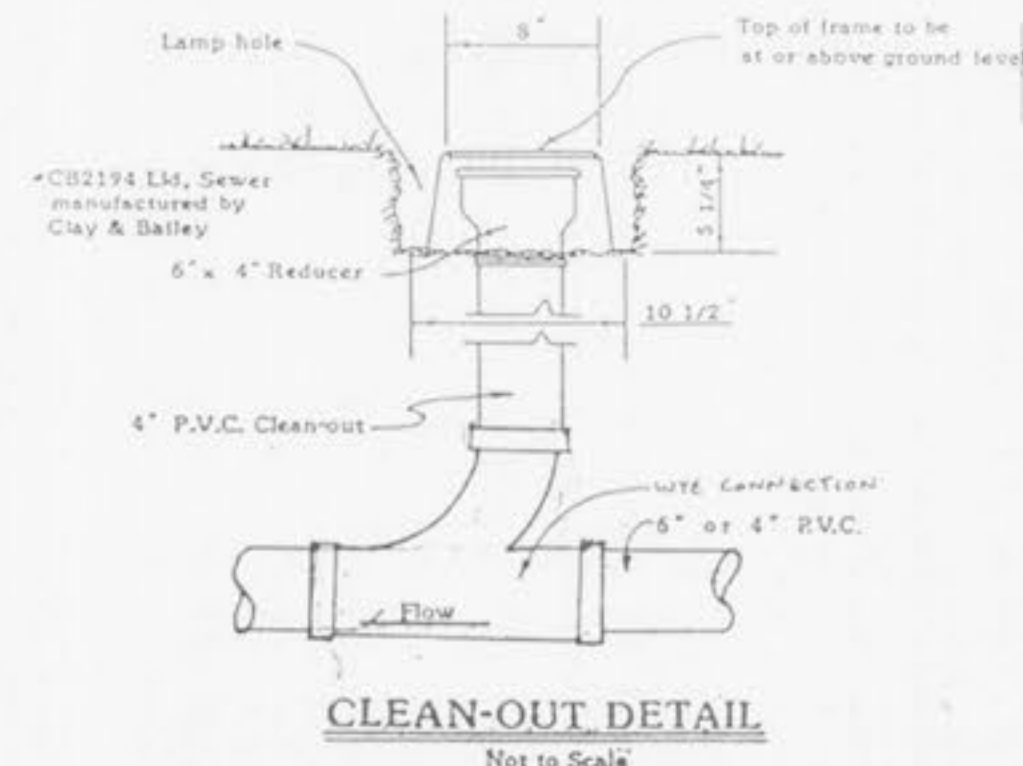
- NOTE: ALL INLETS OR INLET-MANHOLES CONSTRUCTED WITHIN OR ADJUTING PAVED AREA SHALL HAVE GUTTER SUMPS. THE PAYLINE FOR THE SUMP SHALL BE CONSIDERED 2" WIDE BY THE ACTUAL LENGTH.



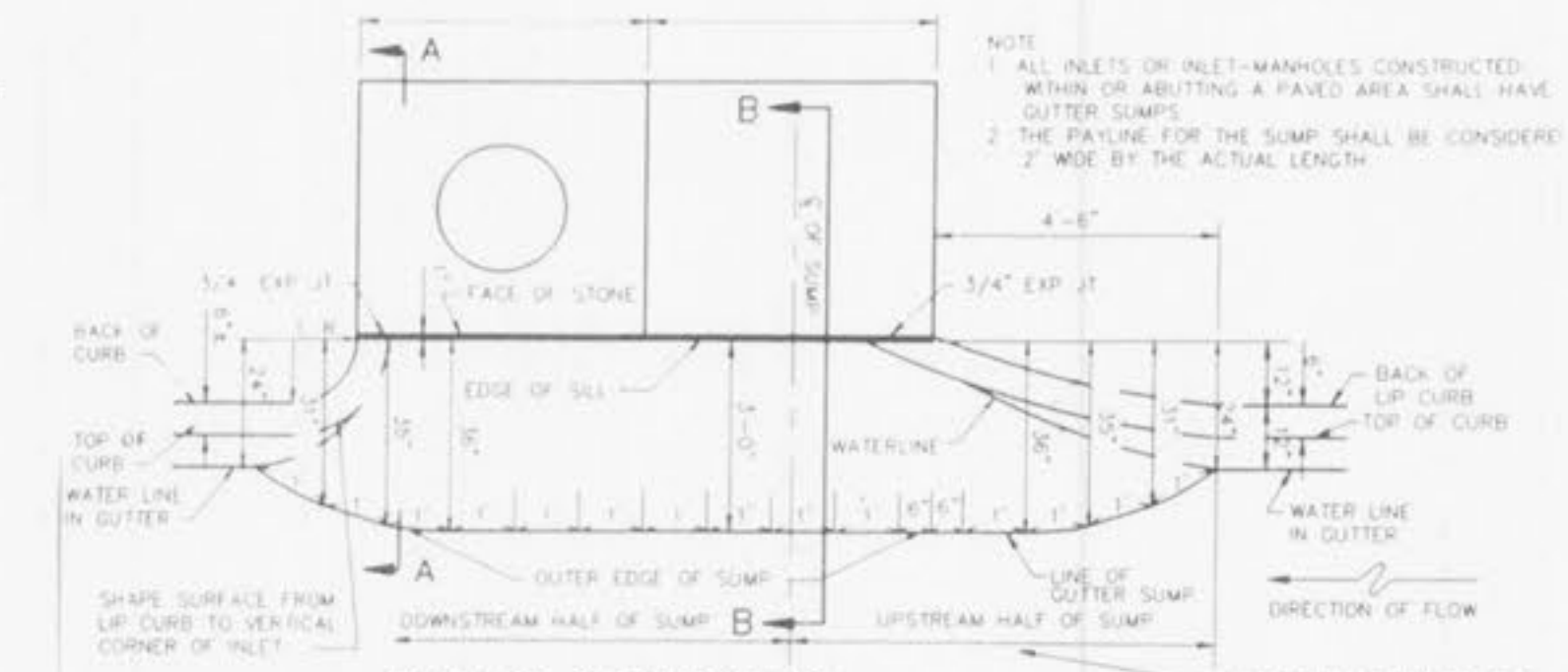
NOTE: MANHOLE STEPS UNIFORMLY SPACED AT MAX. 16" C-C

NOTE: GRANULAR BEDDING REQUIRED AROUND PIPE AT MANHOLES.

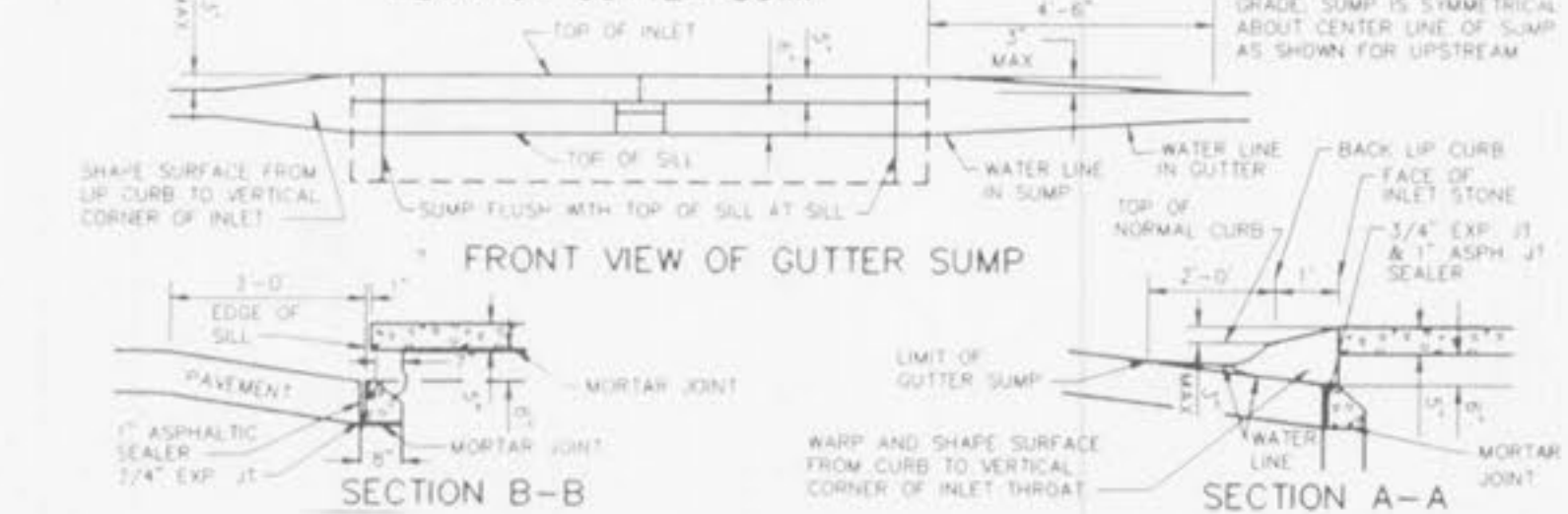
SECTION A-A  
LINE MANHOLE PIPE SEWERS 8"-24" DIA.



CLEAN-OUT DETAIL  
Not to Scale



SECTION A-A



SECTION B-B

- NOTE
1. ALL INLETS OR INLET-MANHOLES CONSTRUCTED WITHIN OR ADJUTING A PAVED AREA SHALL HAVE GUTTER SUMPS.
  2. THE PAYLINE FOR THE SUMP SHALL BE CONSIDERED 2" WIDE BY THE ACTUAL LENGTH.

IMPROVEMENT PLAN FOR  
EAGLE ROCK  
WINGHAVEN PHASE I  
PART OF U.S. SURVEY NO. 1669  
AND PART OF SECTIONS 11 & 12  
TOWNSHIP 46 NORTH, RANGE 2 EAST  
CITY OF O'FALLON, MISSOURI

Kuhlmann  
Design  
Group, Inc.  
#6 Westbury Drive  
St. Charles, Missouri 63301  
Tel: (314) 946-5566  
R. Louis, Missouri  
Bellefontaine, Illinois  
St. Charles, Missouri

K d G

DISCLAIMER OF RESPONSIBILITY  
I hereby specify that the documents intended to be authenticated by my seal are limited to this sheet, and I hereby disclaim any responsibility for all other Drawings, Specifications, Estimates, Reports or other documents or instruments relating to or intended to be used for any part or parts of the architectural or engineering project or survey.

NO. DATE  
1 6/11/95 P.B. D.C.D.  
PROJECT NO. CONTRACT NO.  
DRAWN CHECKED  
DATE FPB

CONSTRUCTION  
DETAILS  
SHEET 11 OF 12