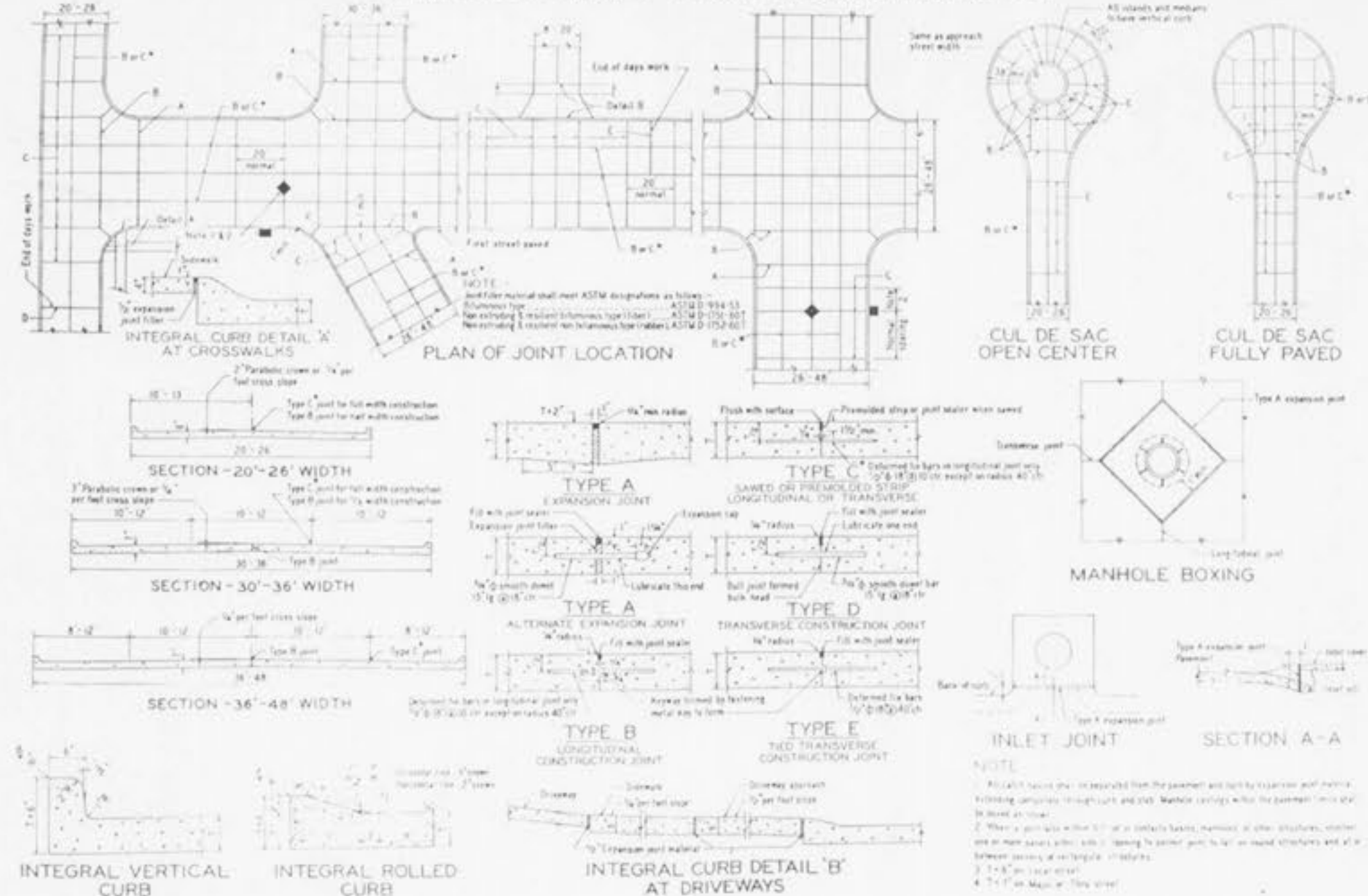


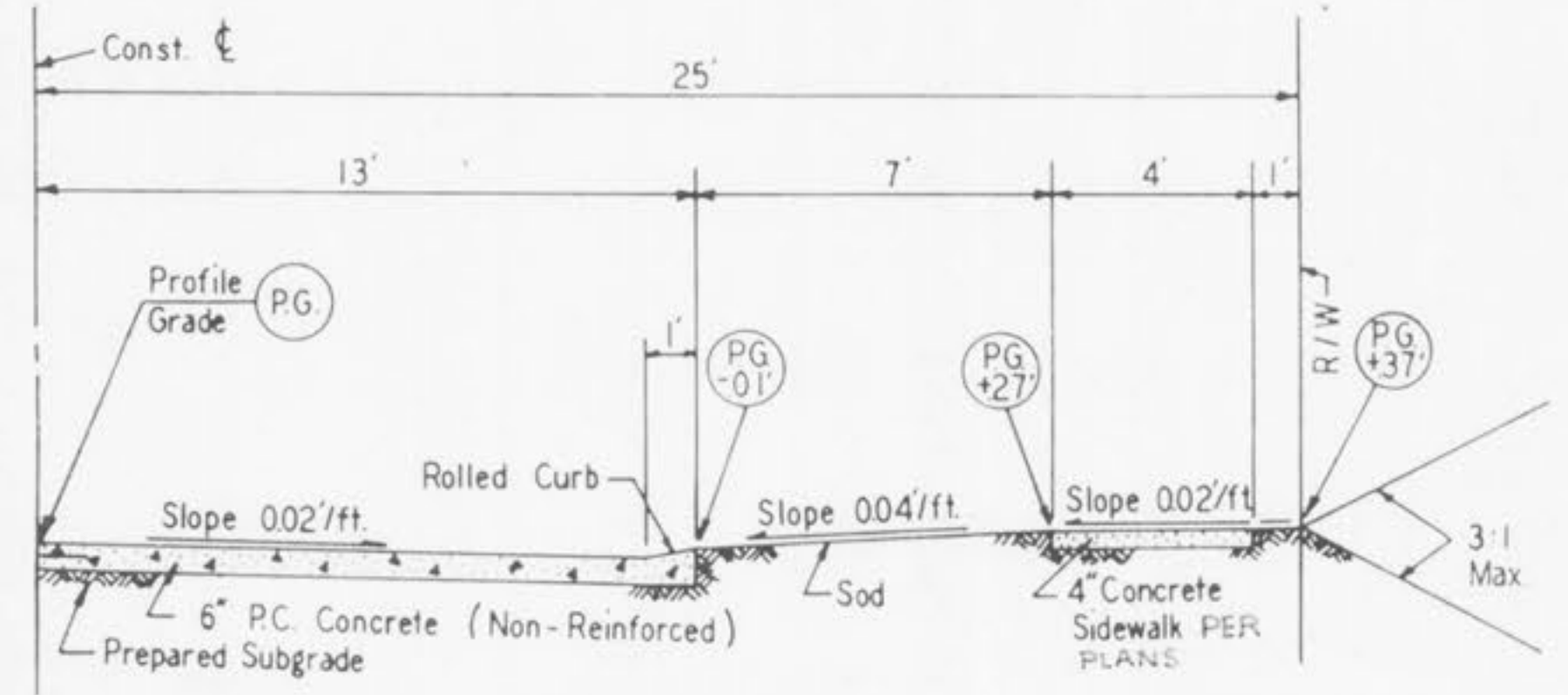
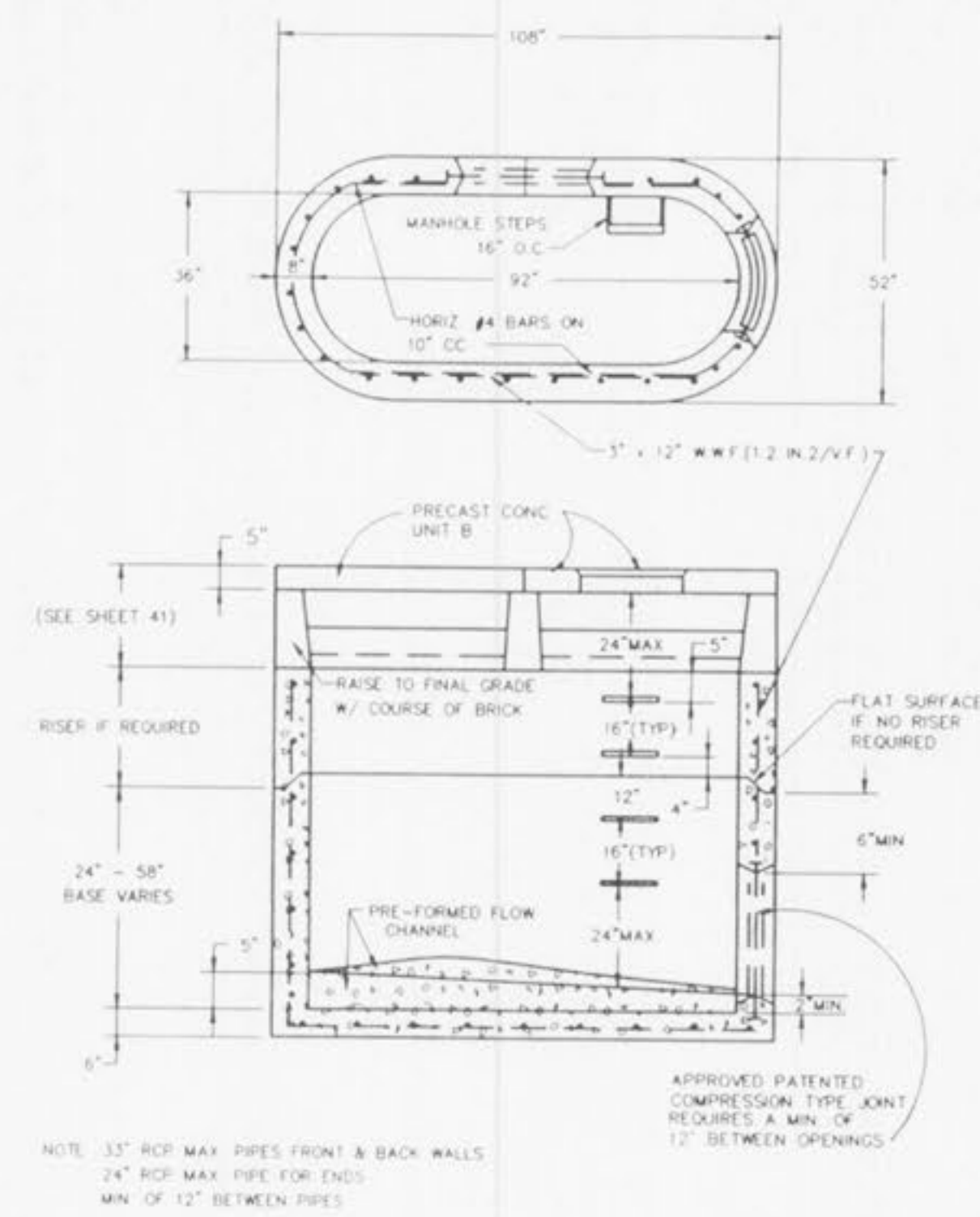
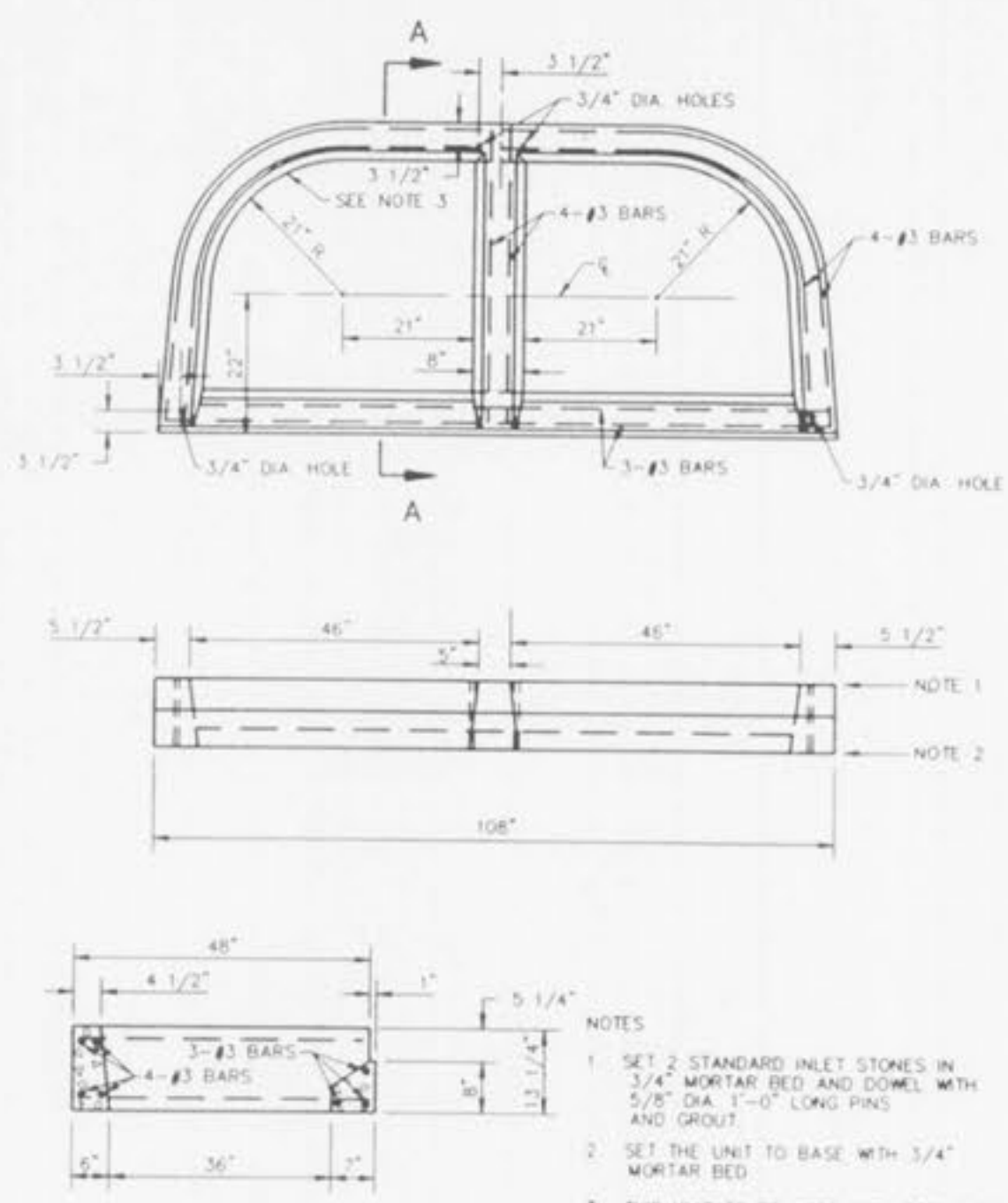
INTEGRAL CURB PAVEMENT TYPICAL SECTIONS AND DETAILS



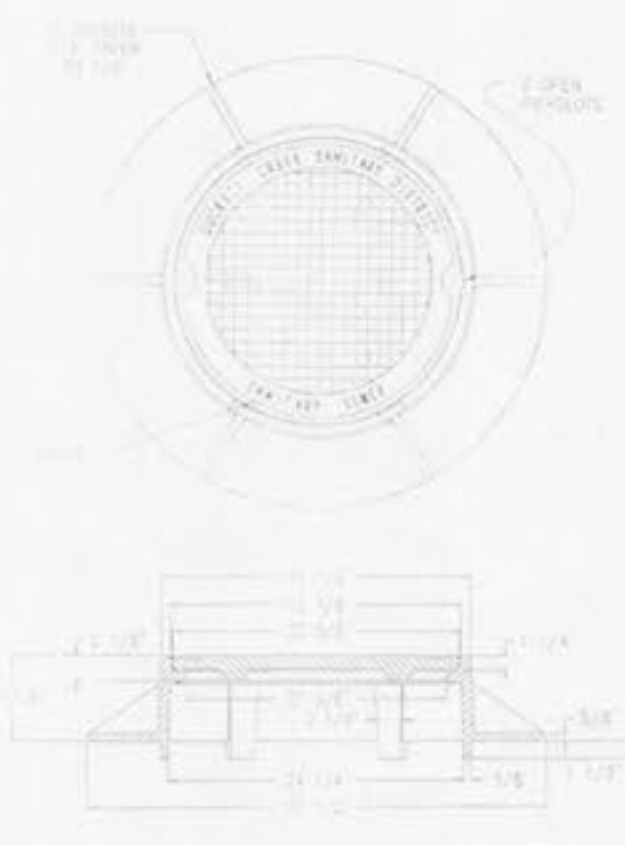
DIA. OF PIPE (INCHES)	ROUND PIPE			HORIZONTAL ELLIPTICAL PIPE		
	PAVING (INCHES)	PAVING (FEET)	PAVING (FEET)	PAVING (INCHES)	PAVING (FEET)	PAVING (FEET)
4	3.0	3.0	3.0	3.0	3.0	3.0
6	3.0	3.0	3.0	3.0	3.0	3.0
8	3.0	3.0	3.0	3.0	3.0	3.0
10	3.0	3.0	3.0	3.0	3.0	3.0
12	3.0	3.0	3.0	3.0	3.0	3.0
15	3.0	3.0	3.0	3.0	3.0	3.0
18	3.0	3.0	3.0	3.0	3.0	3.0
20	3.0	3.0	3.0	3.0	3.0	3.0
24	3.0	3.0	3.0	3.0	3.0	3.0
30	3.0	3.0	3.0	3.0	3.0	3.0
36	3.0	3.0	3.0	3.0	3.0	3.0
42	3.0	3.0	3.0	3.0	3.0	3.0
48	3.0	3.0	3.0	3.0	3.0	3.0
54	3.0	3.0	3.0	3.0	3.0	3.0
60	3.0	3.0	3.0	3.0	3.0	3.0
66	3.0	3.0	3.0	3.0	3.0	3.0
72	3.0	3.0	3.0	3.0	3.0	3.0
78	3.0	3.0	3.0	3.0	3.0	3.0
84	3.0	3.0	3.0	3.0	3.0	3.0
90	3.0	3.0	3.0	3.0	3.0	3.0
96	3.0	3.0	3.0	3.0	3.0	3.0
102	3.0	3.0	3.0	3.0	3.0	3.0
108	3.0	3.0	3.0	3.0	3.0	3.0
114	3.0	3.0	3.0	3.0	3.0	3.0
120	3.0	3.0	3.0	3.0	3.0	3.0
126	3.0	3.0	3.0	3.0	3.0	3.0
132	3.0	3.0	3.0	3.0	3.0	3.0
138	3.0	3.0	3.0	3.0	3.0	3.0
144	3.0	3.0	3.0	3.0	3.0	3.0

SECTION OF MANHOLE	TOP	TRANSITION	LOWER	SECTION	SECTION	SECTION	SECTION	SECTION	SECTION
UPPER	26 1/2" DIA.								
LOWER	42" DIA.								
8" THRU									
24" DIA. PIPE									
27" THRU									
36" DIA. PIPE									

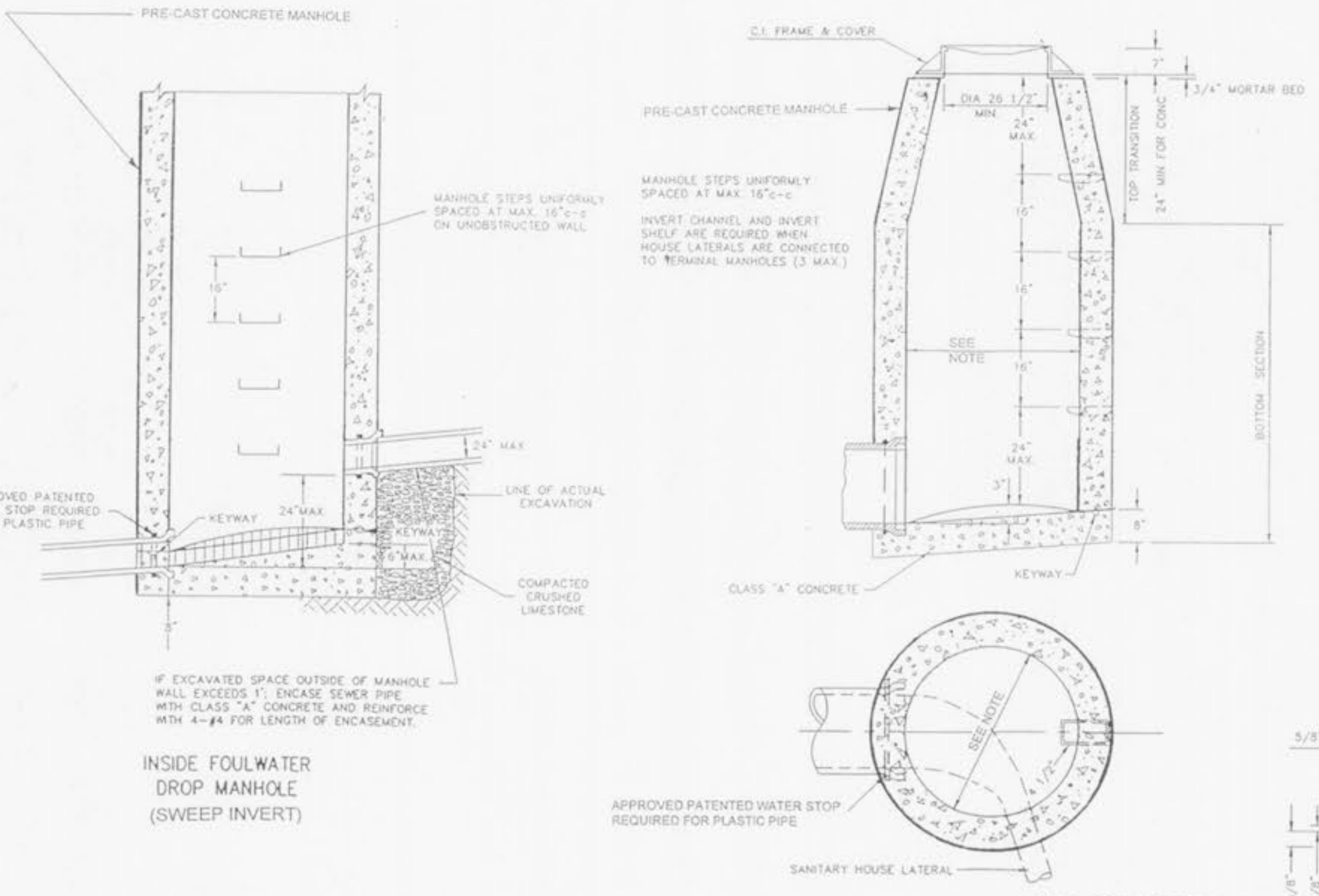
TABLE NO. 2 STANDARD MANHOLE DIMENSIONS



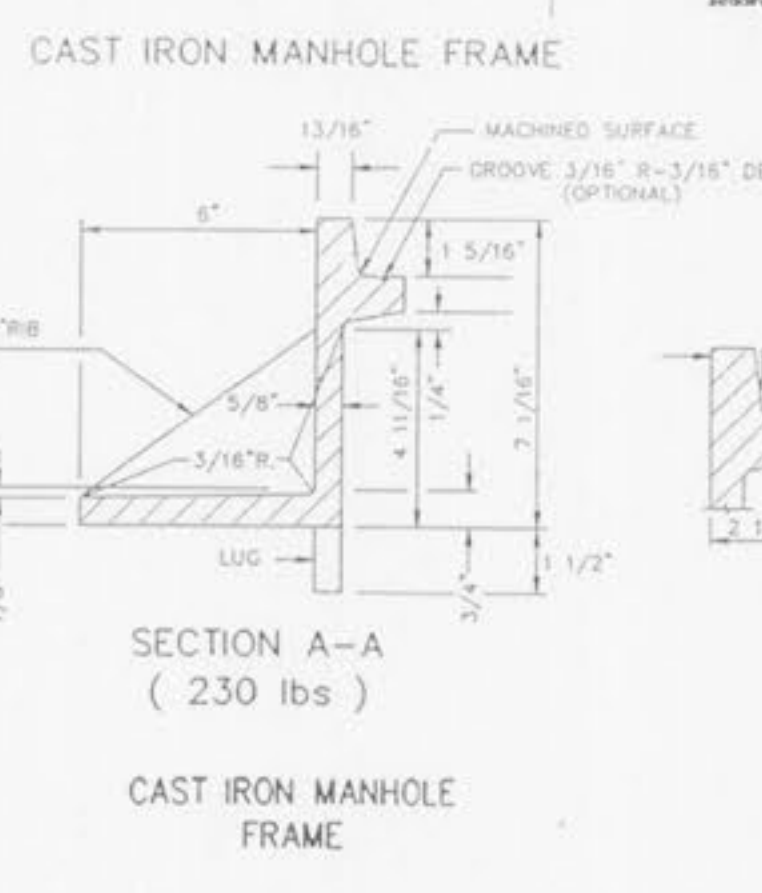
STANDARD TYPICAL SECTION RESIDENTIAL 50' R/W 26' PAVT.



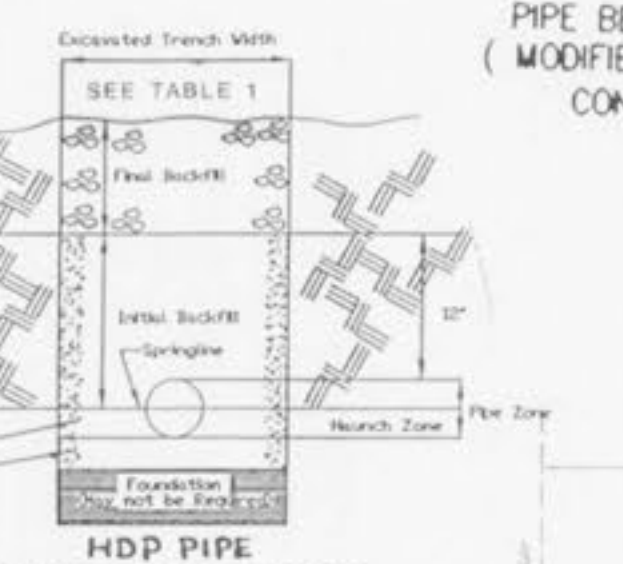
MANHOLE RING & COVER



TERMINAL MANHOLE



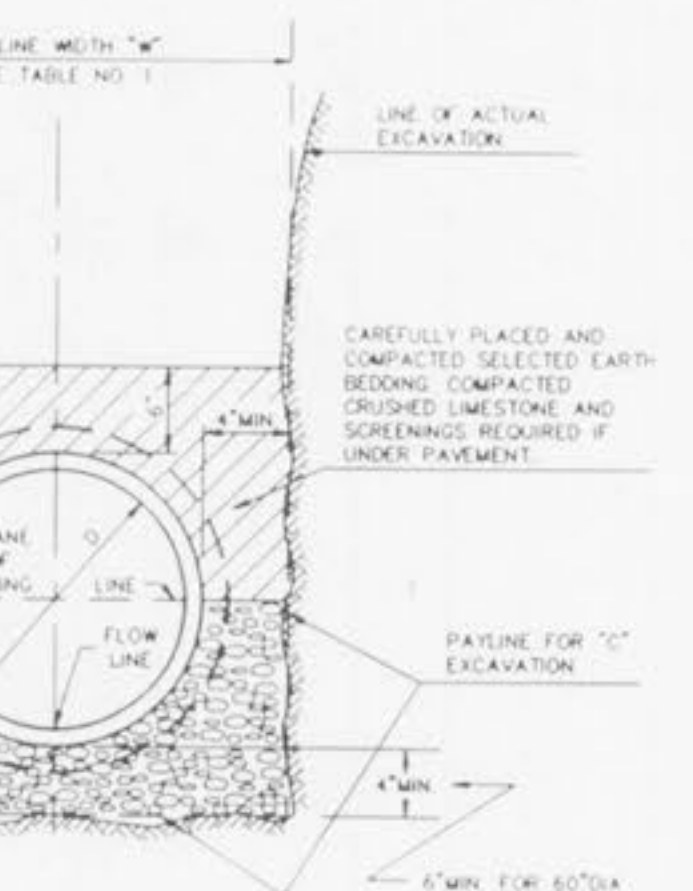
CAST IRON MANHOLE FRAME



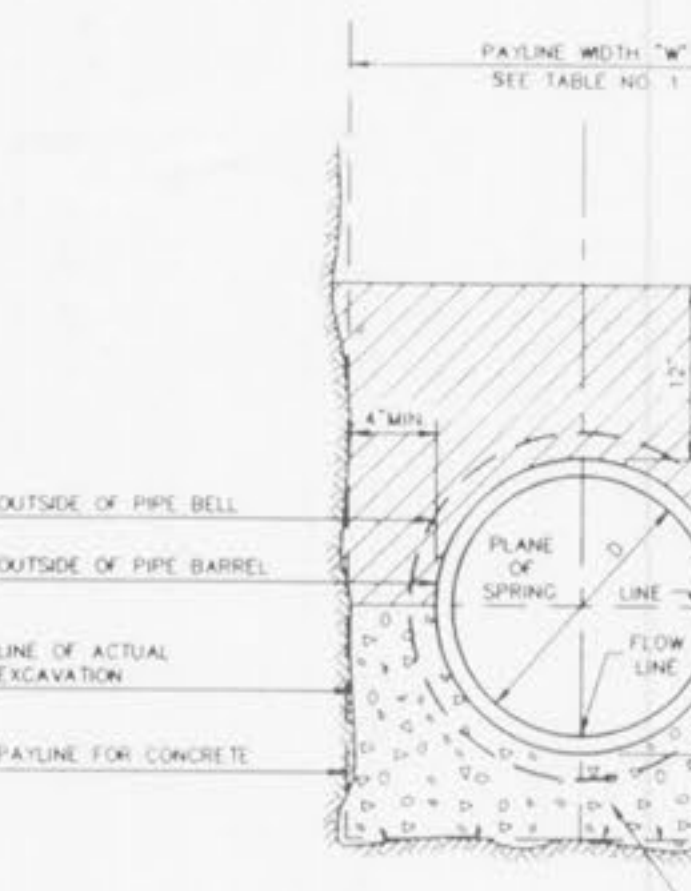
HDP PIPE TRENCH CROSS SECTION



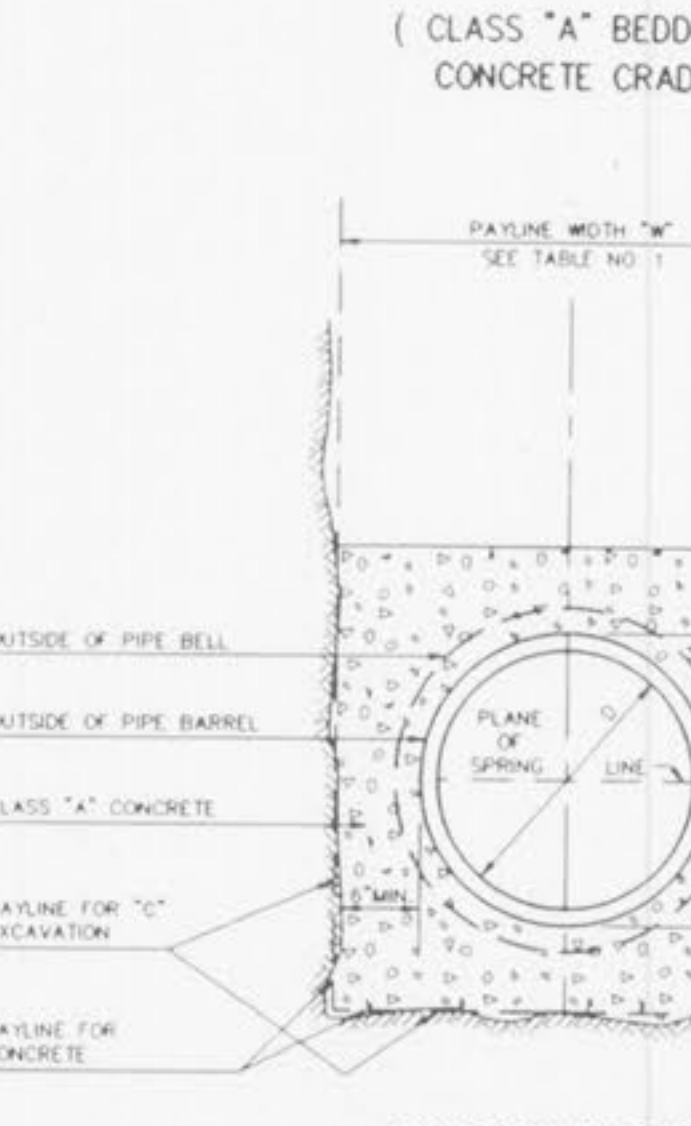
PIPE BEDDING CLASS "C" (FOR ALL PIPE EXCEPT REINFORCED CONCRETE PIPE)



PIPE BEDDING CLASS "C" (MODIFIED FOR REINFORCED CONCRETE PIPE)



DOUBLE UNTRAPPED STREET INLET PRECAST CONCRETE



CONCRETE CRADLE

IMPROVEMENT PLAN FOR
EAGLE ROCK
WINGHAVEN PHASE I
PART OF U.S. SURVEY NO. 1669
AND PART OF SECTIONS 11 & 12
TOWNSHIP 46 NORTH, RANGE 2 EAST
CITY OF FALLON, MISSOURI

Kuhlmann Design Group, Inc.
#6 Westbury Drive
St. Charles, Missouri 63301
Tel: (314) 946-5566
St. Louis, Missouri
Berthel, Illinois
St. Charles, Missouri

KdG

DISCLAIMER OF RESPONSIBILITY
I hereby specify that the documents intended to be authorized by my seal are limited to this sheet, and I hereby disclaim any responsibility for all other Drawings, Specifications, Estimates, Reports or other documents or instruments relating to or intended to be used for any part or parts of the architectural or engineering project or survey.

STATE OF MISSOURI
SALIM ELKOTT
NUMBER E-29452
REGISTERED PROFESSIONAL ENGINEER

NO. DATE
1 6/27/95 PLS QCS D

PROJECT NO. CONTRACT NO.
DRAWN CHECKED
DATE

CONSTRUCTION DETAILS

SHEET 12 OF 12

Copyright © 1995 Kuhlmann Design Group, Inc. All rights reserved.