

WINGHAVEN

GRADING PLAN PHASE I APARTMENT AREA

Prepared For

WINGHAVEN RESIDENTIAL, L.L.C.

#1 McBRIDE & SON CENTER DRIVE

ST. LOUIS, MISSOURI 63005

PHONE: (314) 537-2000

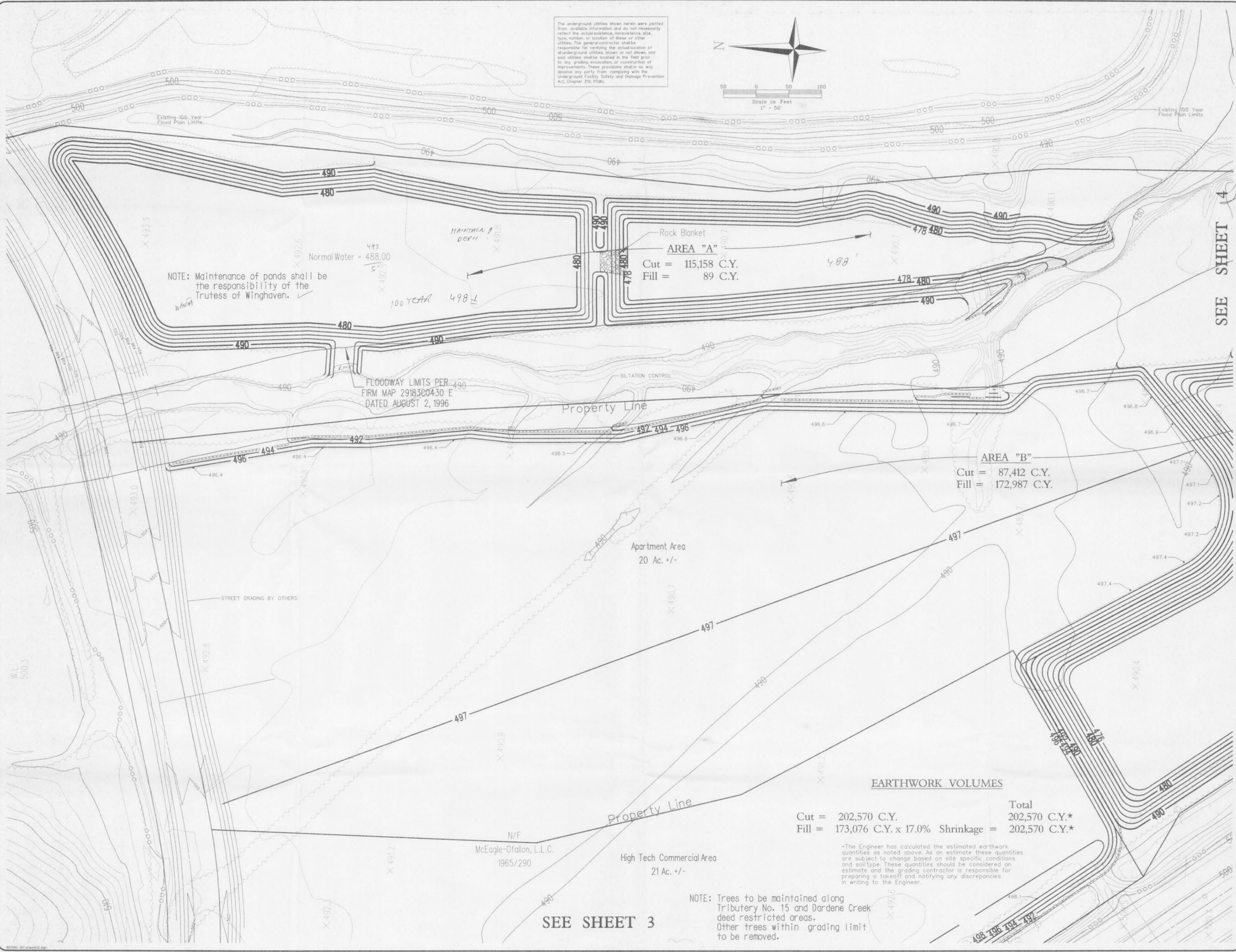
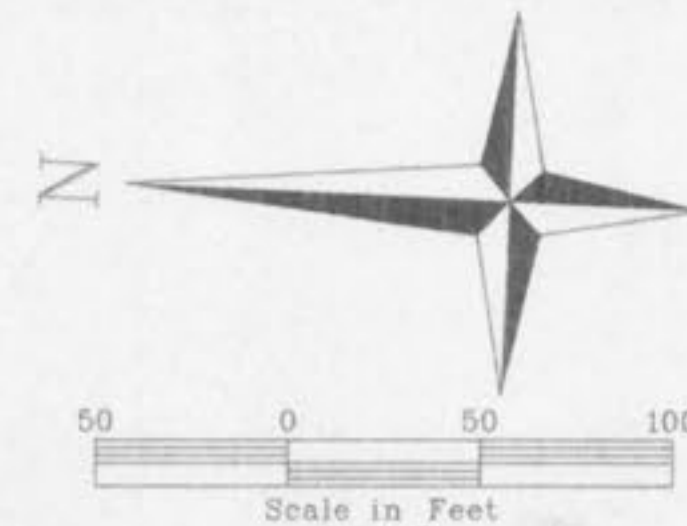
FAX: (314) 537-2546



VOLZ

FILE COPY
APPROVED
FOR DESIGN ONLY
8-10-99
[Signature]
John L. Lippert

The underground utilities shown herein were plotted from available information and do not necessarily reflect the actual existence, nonexistence, size, type, number, or location of these or other utilities. The general contractor shall be responsible for verifying the actual location of all underground utilities, shown or not shown, and said utilities shall be located in the field prior to any grading, excavation or construction of improvements. These provisions shall in no way absolve any party from complying with the Underground Facility Safety and Damage Prevention Act, Chapter 319, RSMo.



NOTE: Maintenance of ponds shall be the responsibility of the Trustess of Winghaven.

Rock Blanket
AREA "A"
 Cut = 115,158 C.Y.
 Fill = 89 C.Y.

AREA "B"
 Cut = 87,412 C.Y.
 Fill = 172,987 C.Y.

EARTHWORK VOLUMES

Cut = 202,570 C.Y.	Total
Fill = 173,076 C.Y. x 17.0% Shrinkage = 29,222 C.Y.	202,570 C.Y.*
	202,570 C.Y.*

*The Engineer has calculated the estimated earthwork quantities as noted above. As an estimate these quantities are subject to change based on site specific conditions and soil type. These quantities should be considered an estimate and the grading contractor is responsible for preparing a takeoff and notifying any discrepancies in writing to the Engineer.

NOTE: Trees to be maintained along Tributary No. 15 and Dardene Creek deed restricted areas. Other trees within grading limit to be removed.

SEE SHEET 3

SEE SHEET 4

MCBRIDE & SON
 ENGINEERS
 CENTER DRIVE
 ST. LOUIS, MISSOURI 63005
 PHONE (314) 537-2000



WINGHAVEN
 PHASE I APARTMENT AREA

GRADING PLAN

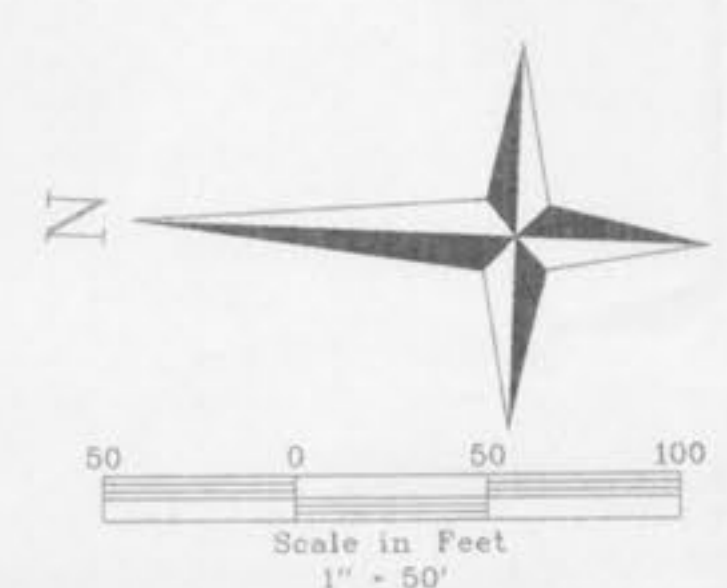
Design By: T.J.M.
 Drawn By: J.M.A.
 Checked By: T.J.M.

B-5600-30
 6-25-99

SEE SHEET 2

SEE SHEET 4

N/F
McEagle-Ofallon, L.L.C.
1965/290
High Tech Commercial Area
21 Ac. +/-



The underground utilities shown herein were plotted from available information and do not necessarily reflect the actual existence, nonexistence, size, type, number, or location of these or other utilities. The general contractor shall be responsible for verifying the actual location of underground utilities, shown or not shown, and soil utilities shall be located in the field prior to any grading, excavation, or construction of improvements. These provisions shall in no way absolve any party from complying with the Underground Facility Safety and Damage Prevention Act, Chapter 319, RSMo.

MCBRIDE & SON
ENGINEERS & ARCHITECTS
ST. LOUIS, MISSOURI 63105
PHONE (314) 537-2000

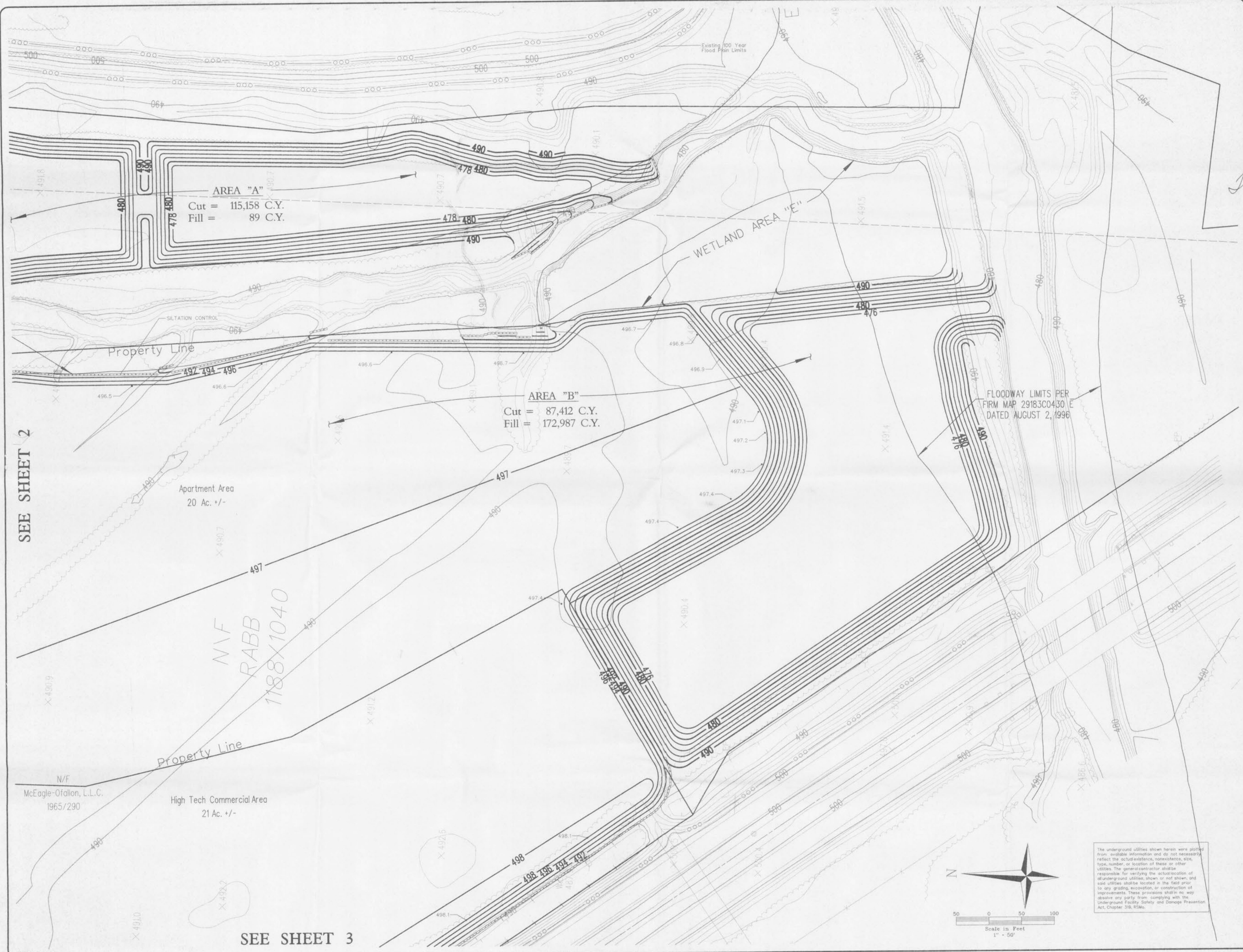
VOLZ

John J. Mays
6/28/99

WINGHAVEN

PHASE I APARTMENT AREA

GRADING PLAN
 Drawn By: T.J.M.
 Checked By: T.J.M.
 B-5000-30



MCBRIDE & SON
 ENGINEERS & ARCHITECTS
 1000 N. W. 10th St.
 Ft. Lauderdale, FL 33304
 PHONE (305) 537-2000

VOLZ

Timothy J. McEagle
 6/28/97

WINGHAVEN
 PHASE I APARTMENT AREA

GRADING PLAN

Design By: T.J.M.
Drawn By: J.M.L.
Checked By: T.J.M.

B-0500-30
 6-25-97

The underground utilities shown herein were plotted from available information and do not necessarily reflect the actual existence, nonexistence, size, type, number, or location of these or other utilities. The general contractor shall be responsible for verifying the actual location of all underground utilities shown or not shown, and said utilities shall be located in the field prior to any grading, excavation, or construction of improvements. These provisions shall in no way absolve any party from complying with the Underground Facility Safety and Damage Prevention Act, Chapter 319, F.S.M.

