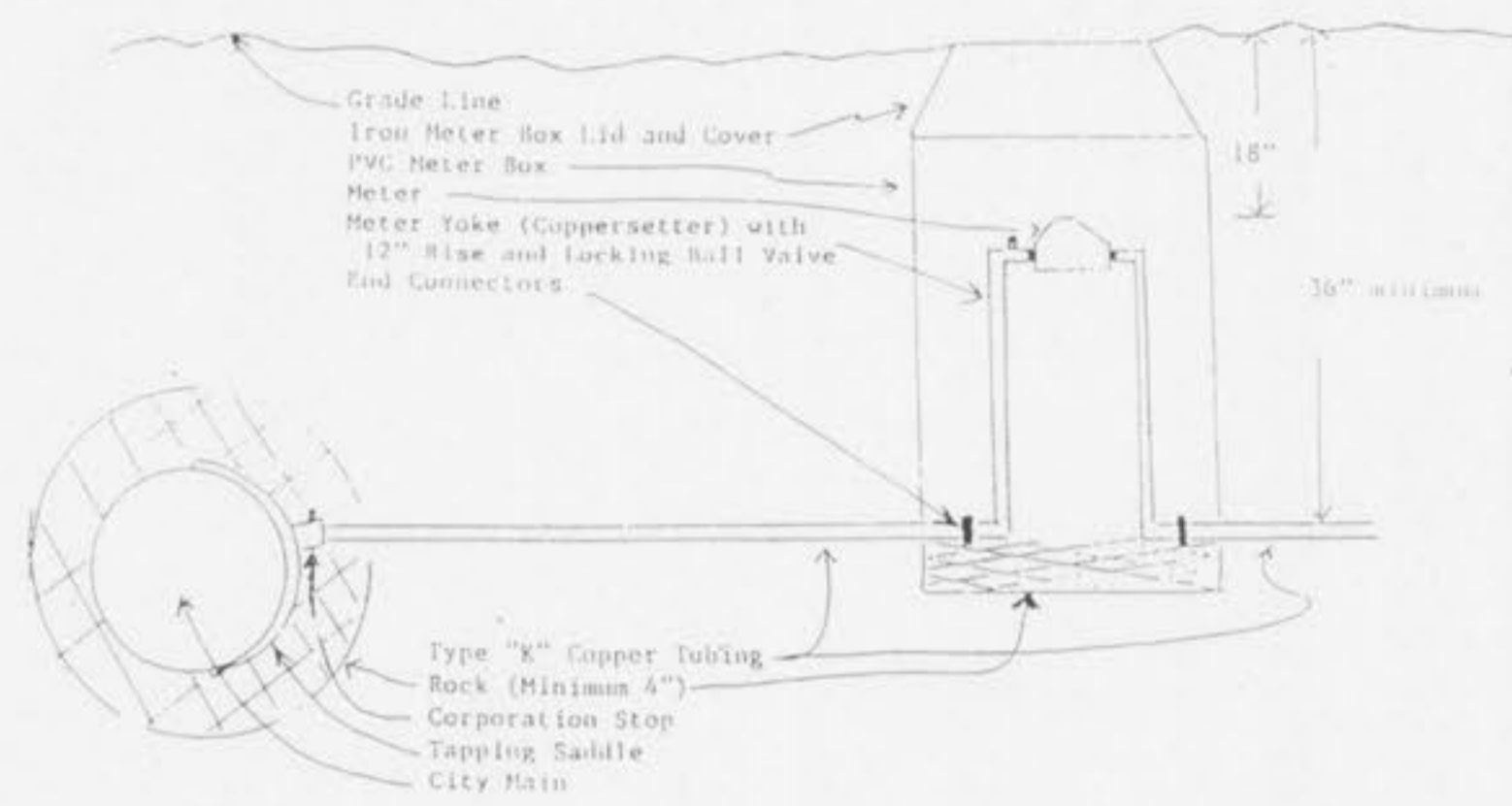
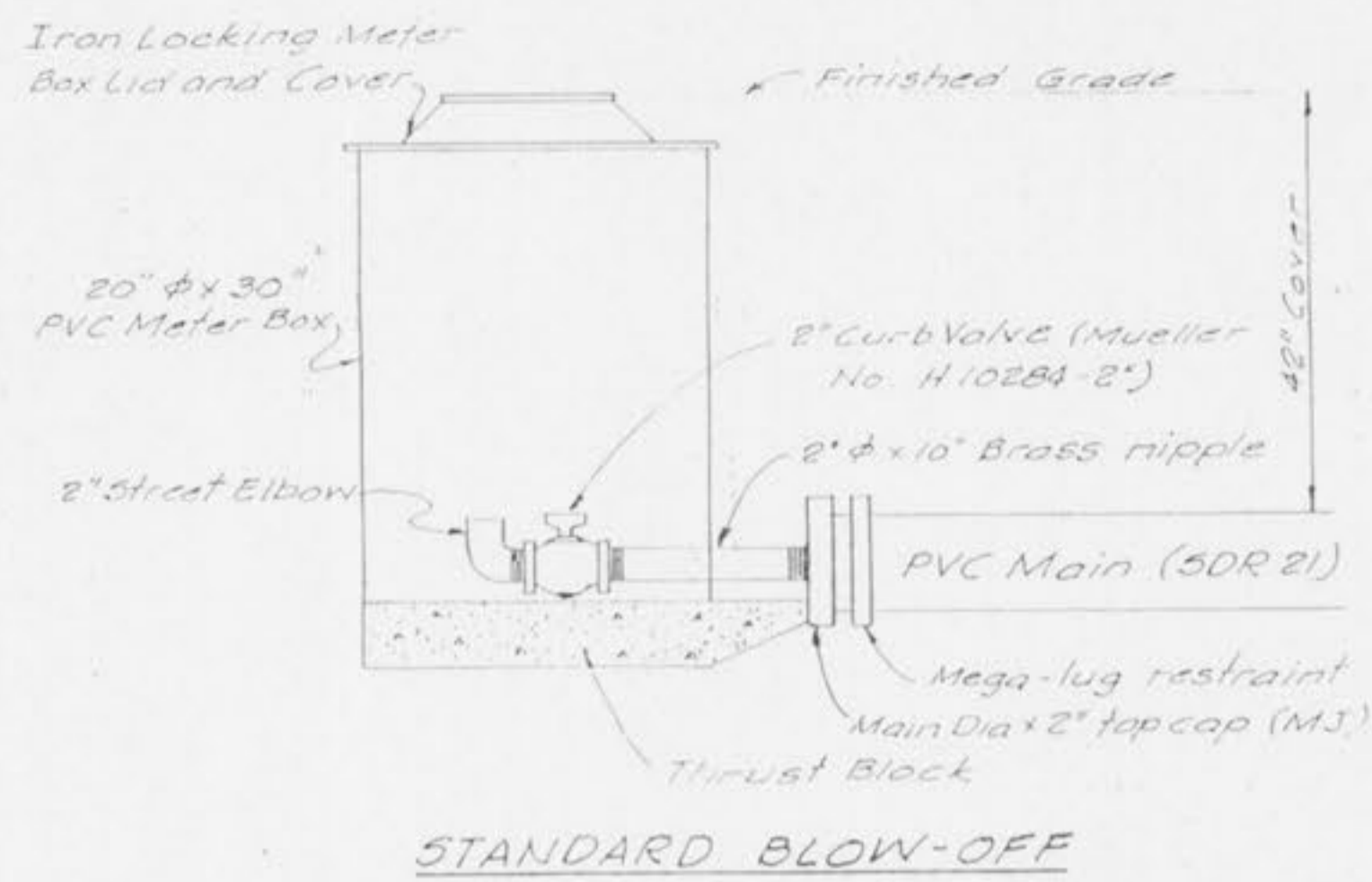


STANDARD METER INSTALLATION

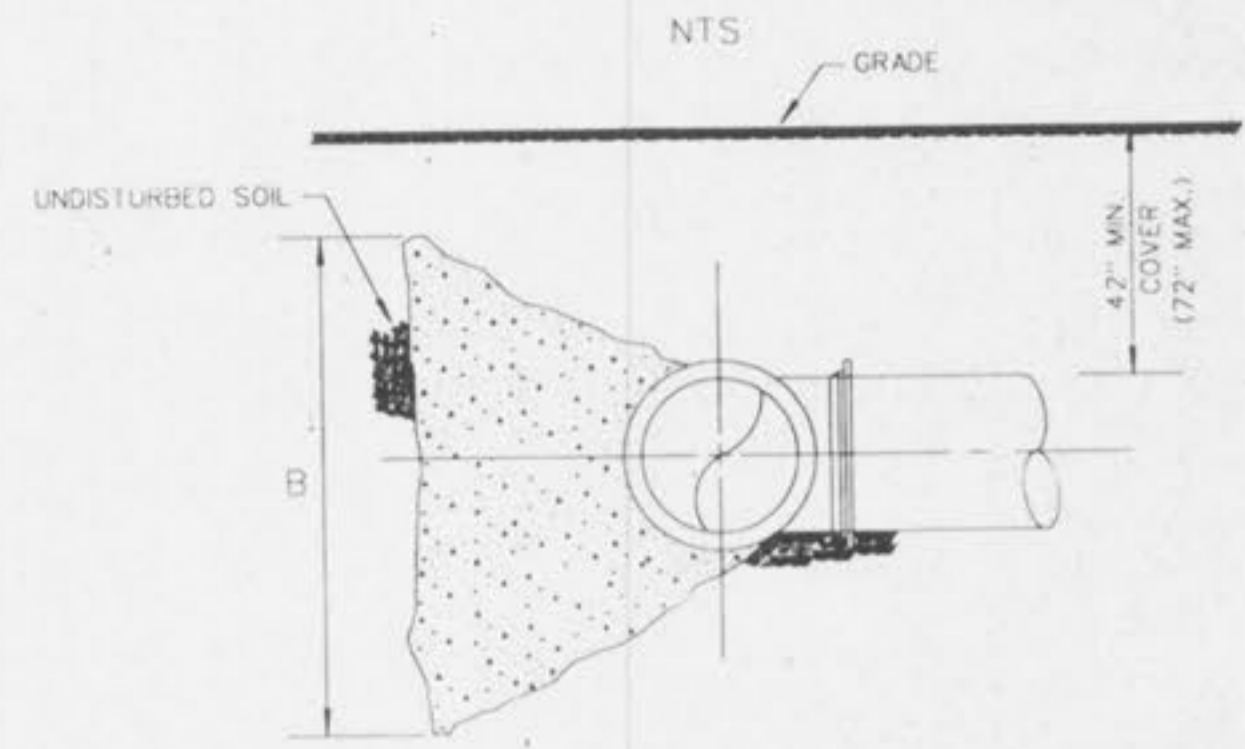


MATERIAL LIST - 1" WATER METER SERVICE

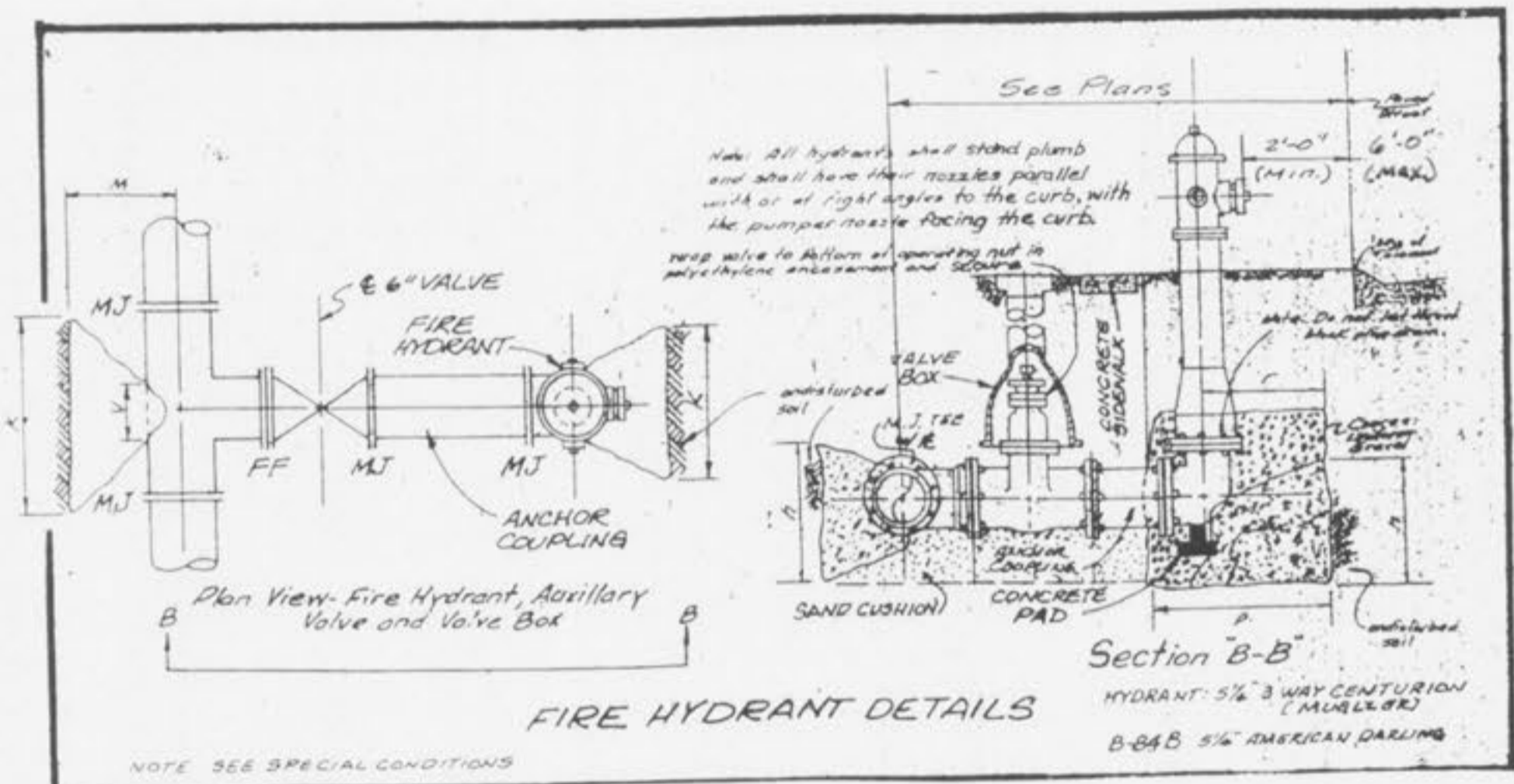
- 1" Sensus SRH MTR, TRPL, 100 GL PLAS BNT
- 1" Meter Yoke with 12" Rise and Locking Ball Valve (B2494-1")
- 1" Corporation Stop (B25008-1")
- 2 - 1" End Connectors, Compression (H-14227-1")
- 20 6150 MTR Box Cover LN w/TR
- 20" x 30" Meter Tile (MIDSTATES)
- 1" x 8" Tapping Saddle, PVC (H13433-1")
- 1" x 10" Tapping Saddle, PVC (H13434-1")
- 1" x 6" Tapping Saddle, PVC



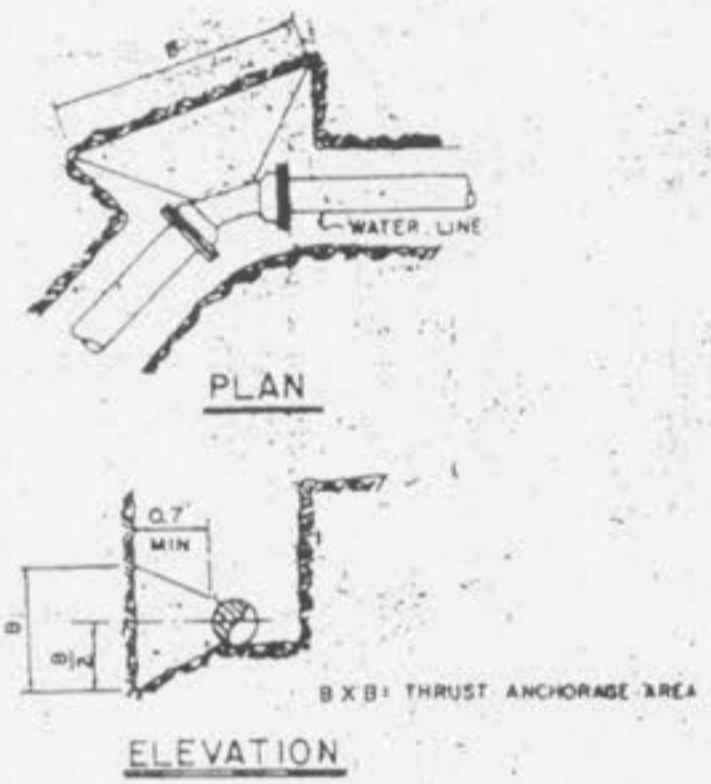
STANDARD BLOW-OFF



SECTION "A-A"
TYPICAL FOR ALL THRUST BLOCKS EXCEPT AS NOTED



FIRE HYDRANT DETAILS

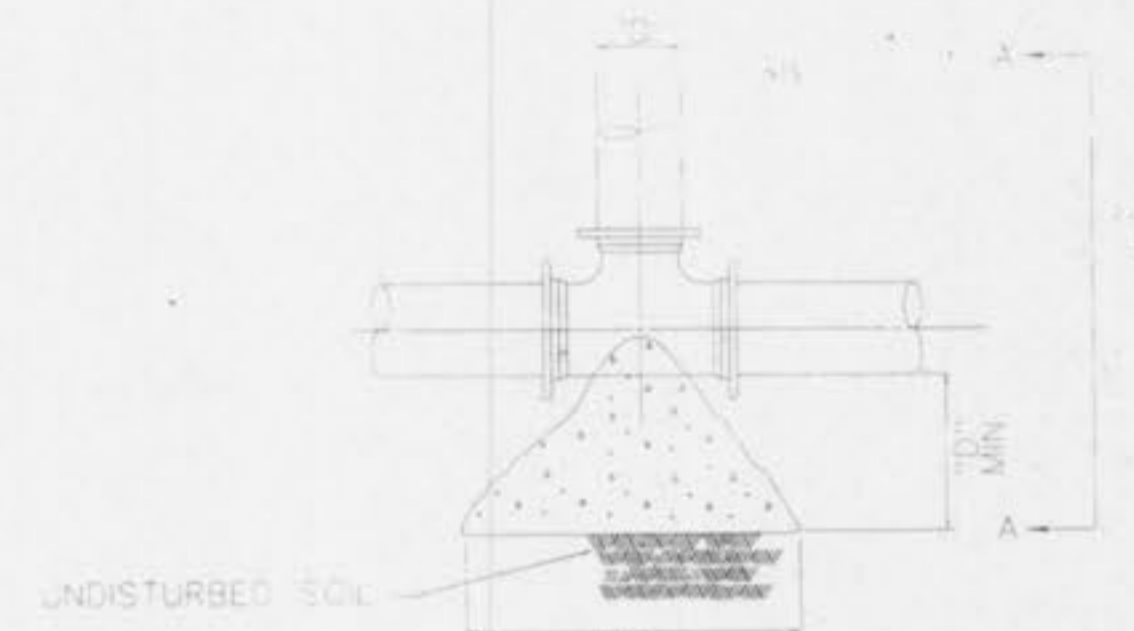


THRUST BLOCK FOR HORIZONTAL OFFSETS

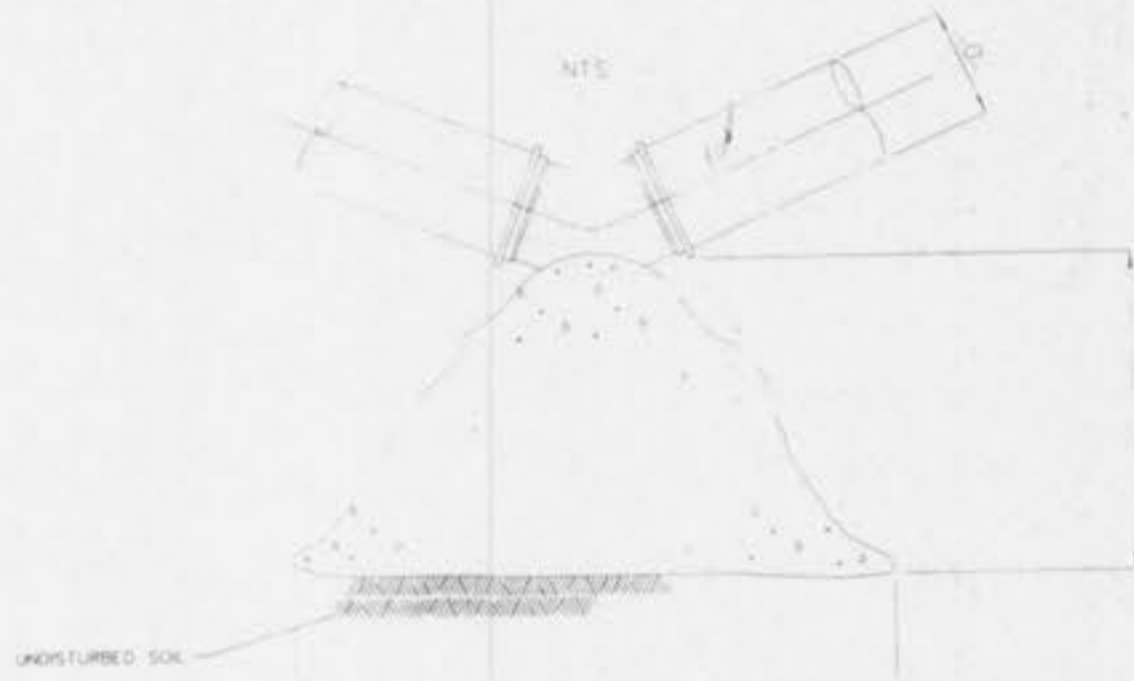
PIPE DIA.	90° BENDS	45° BENDS	22.5° BENDS	WYES-B	TEES	
2"	10	07	10	07	10	07
3"	10	07	10	07	10	07
4"	10	07	10	07	10	07
6"	16	10	10	10	16	10
8"	18	10	14	10	10	22
10"	23	12	17	12	16	27
12"	27	14	20	14	14	32
14"	32	15	24	15	14	38
16"	36	17	27	17	17	43

THRUST BLOCKS
NOT TO SCALE

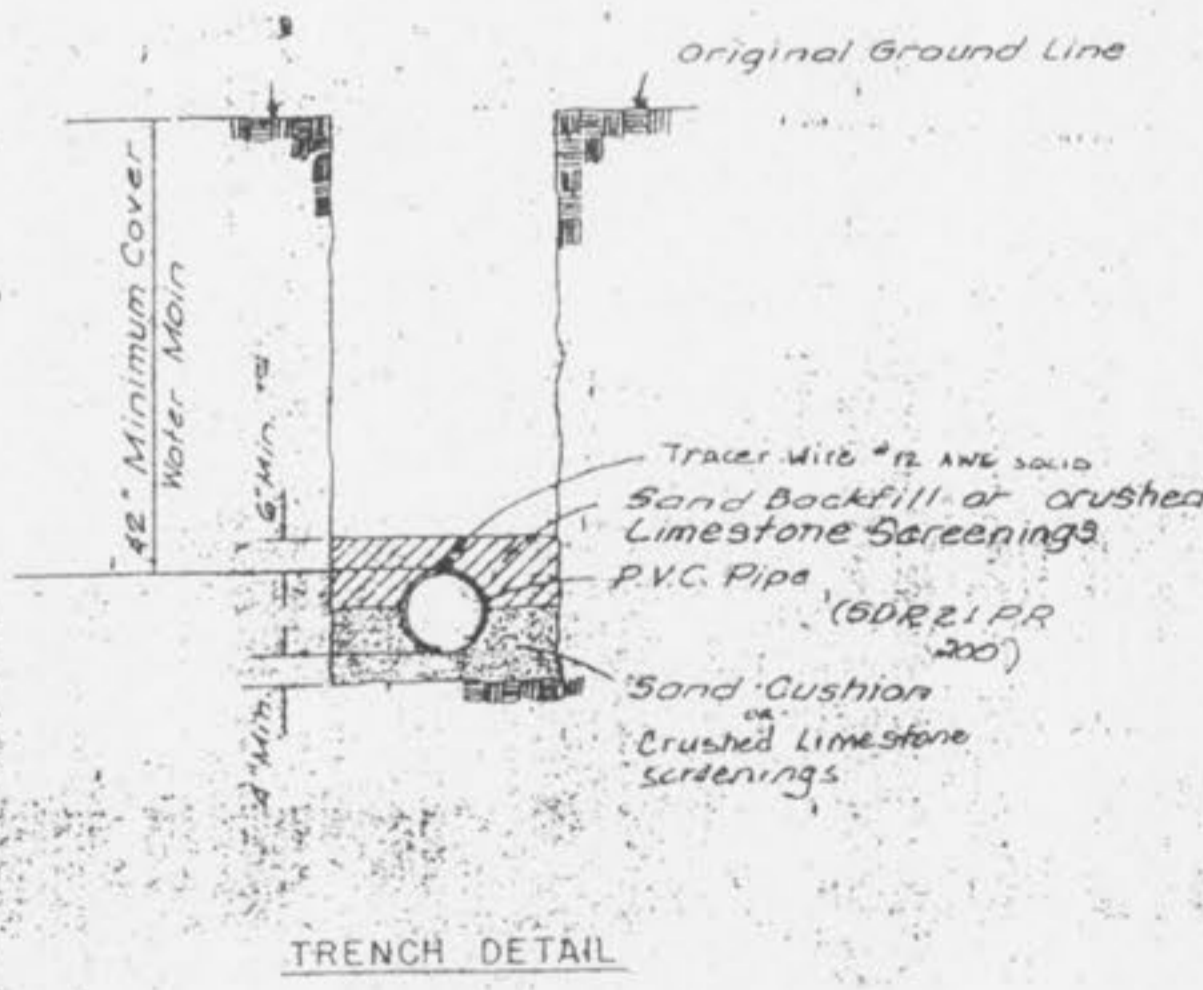
Dimensions are B Face. Use above thrust block dimensions unless poor soil conditions (organic, saturated clay, etc.) dictate use of larger thrust area. See chart @ top center of this sheet for determination of area of thrust block in poor soil conditions.



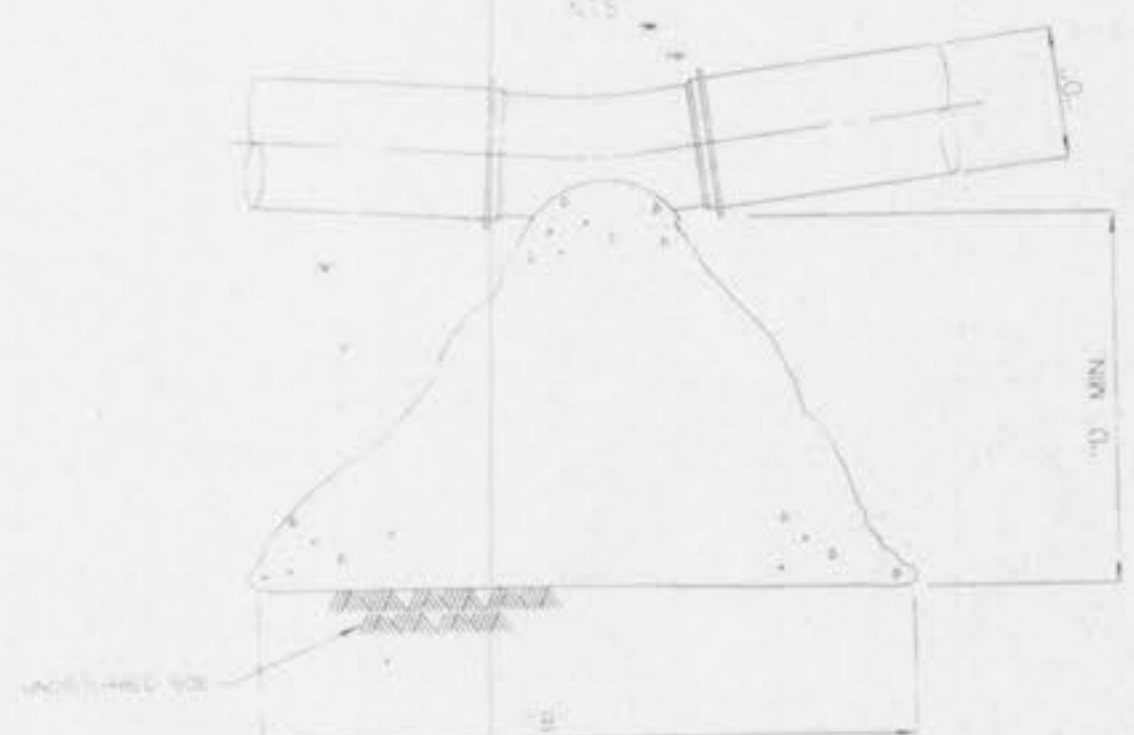
PLAN VIEW
TEE OR WYE BRANCH



PLAN VIEW
45° BEND



TRENCH DETAIL



PLAN VIEW
22 1/2° BEND
11 1/4° BEND

NOTE:
IF AMERICAN DARLING FIRE HYDRANTS ARE TO BE USED, THE CENTRAL TEE SHALL PLANISH TO THE CITY MAIN PARTS (REBUILD KICK AND WELLS FOR SEAT REMOVAL).

