

PRECAST CONCRETE STORMWATER STRUCTURES
MINIMUM DISTANCE FLOWLINE TO TOP OF STONE OR GRATE

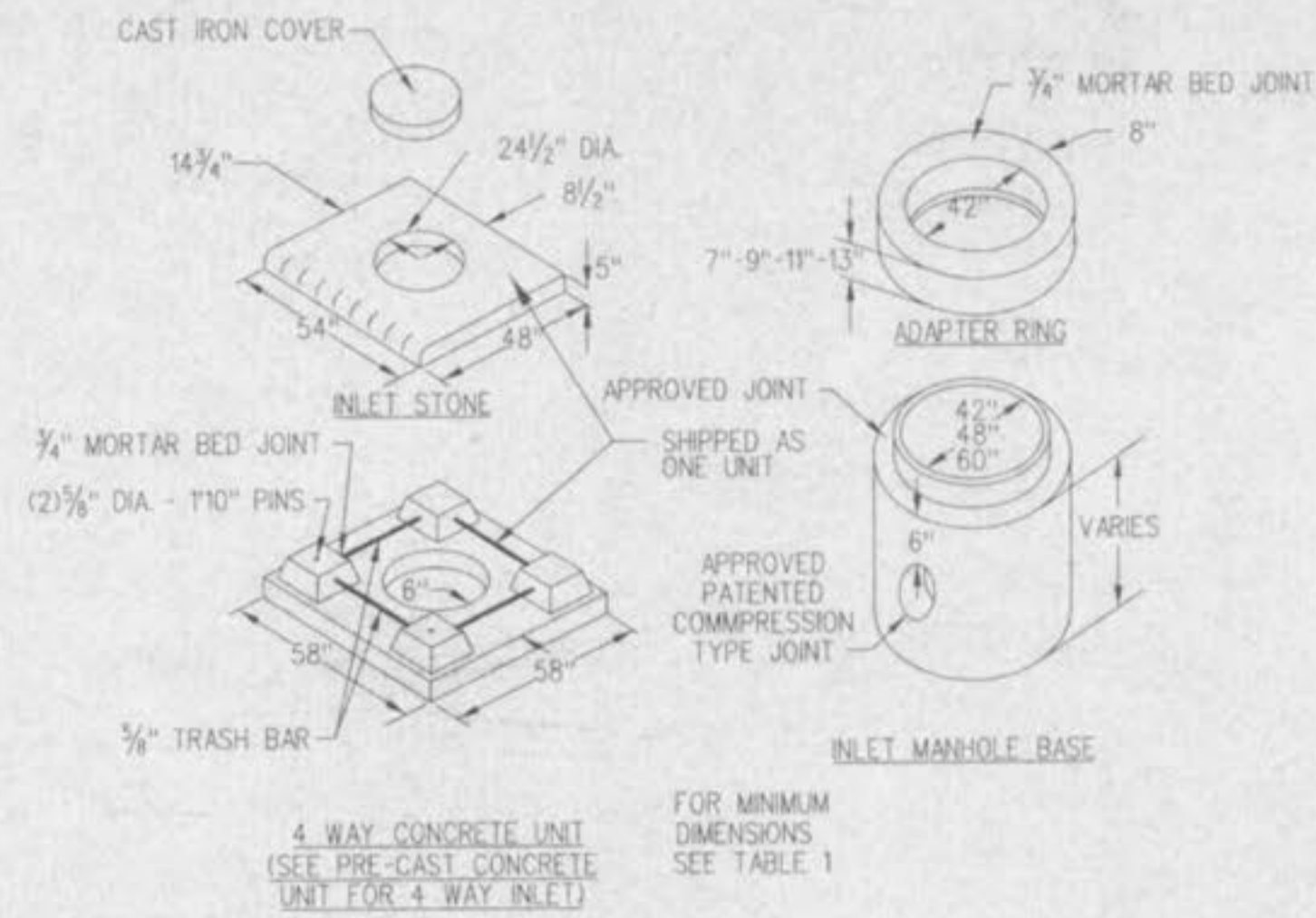
PIPE ID NOMINAL INCHES	AREA INLET CIRCULAR BASE DIA.			42" 48" 60" (MAX.)			42" 48" 60" (MAX.)			
	42"	48"	60"	42"	48"	60"	42"	48"	60"	
12"	45"			38"			31"	48"		41"
15"	48"			41"			34"	51"		44"
18"	52"			44"			37"	55"		48"
21"	55"			47"			40"	58"		51"
24"	58"			51"			44"	61"		54"
27"		78"			71"	NA			81"	NA
30"		82"			74"	NA			85"	NA
33"		85"			77"	NA			88"	NA

(SEE SHEET 32) (SEE SHEET 33) (SEE SHEET 34)

- NOTE: 1. 48" DIA. BASE REQUIRES 7" HIGH TRANSITION SECTION TO 42" DIA., SIMILAR TO "ADAPTER RING" SHEET 32.
2. 60" DIA. BASE REQUIRES 7 1/2" HIGH CONCENTRIC REDUCER TRANSITION TO 42" DIA., SIMILAR TO "ADAPTER RING" SHEET 32.

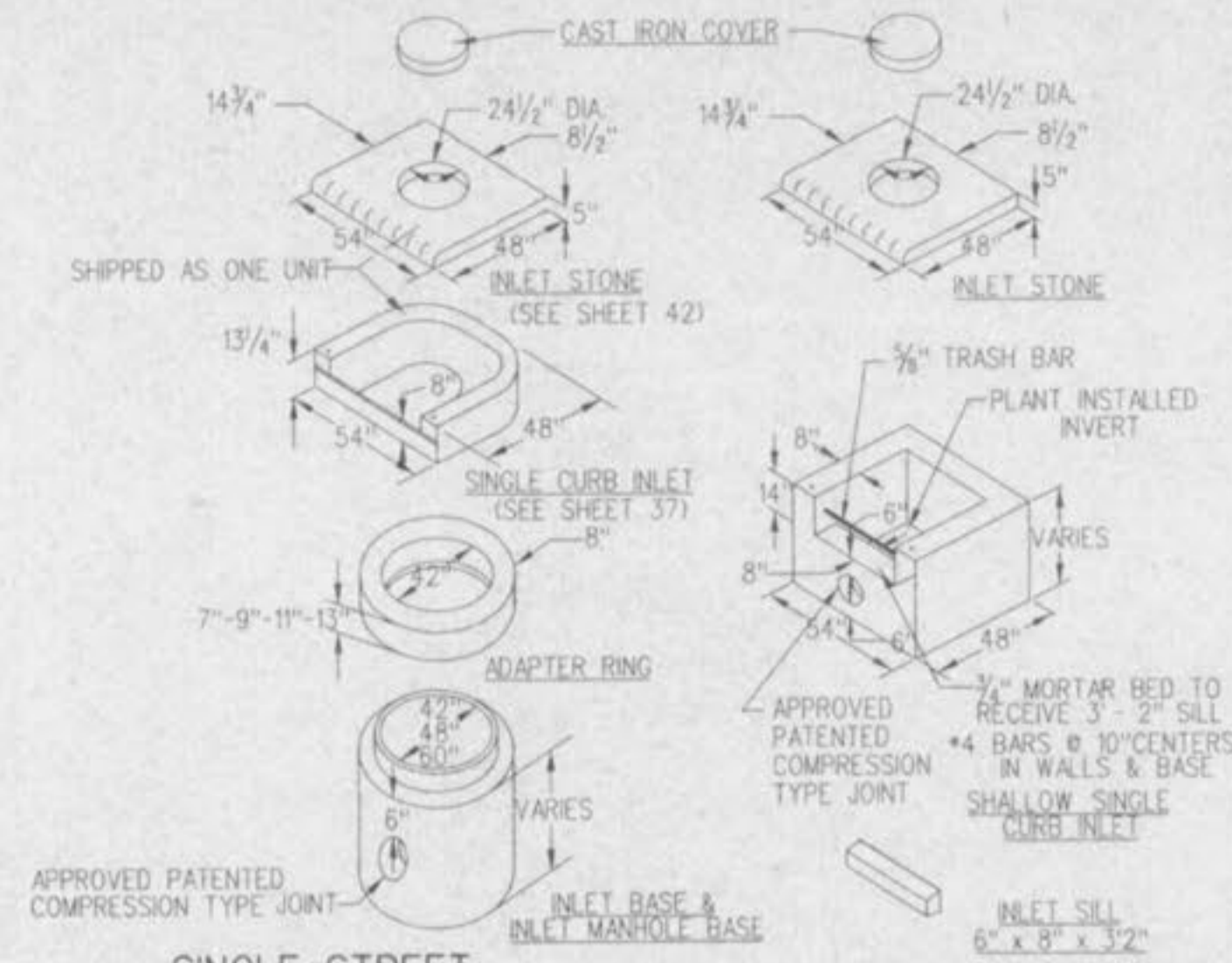
PRECAST CONCRETE STORMWATER STRUCTURES

31 NTS



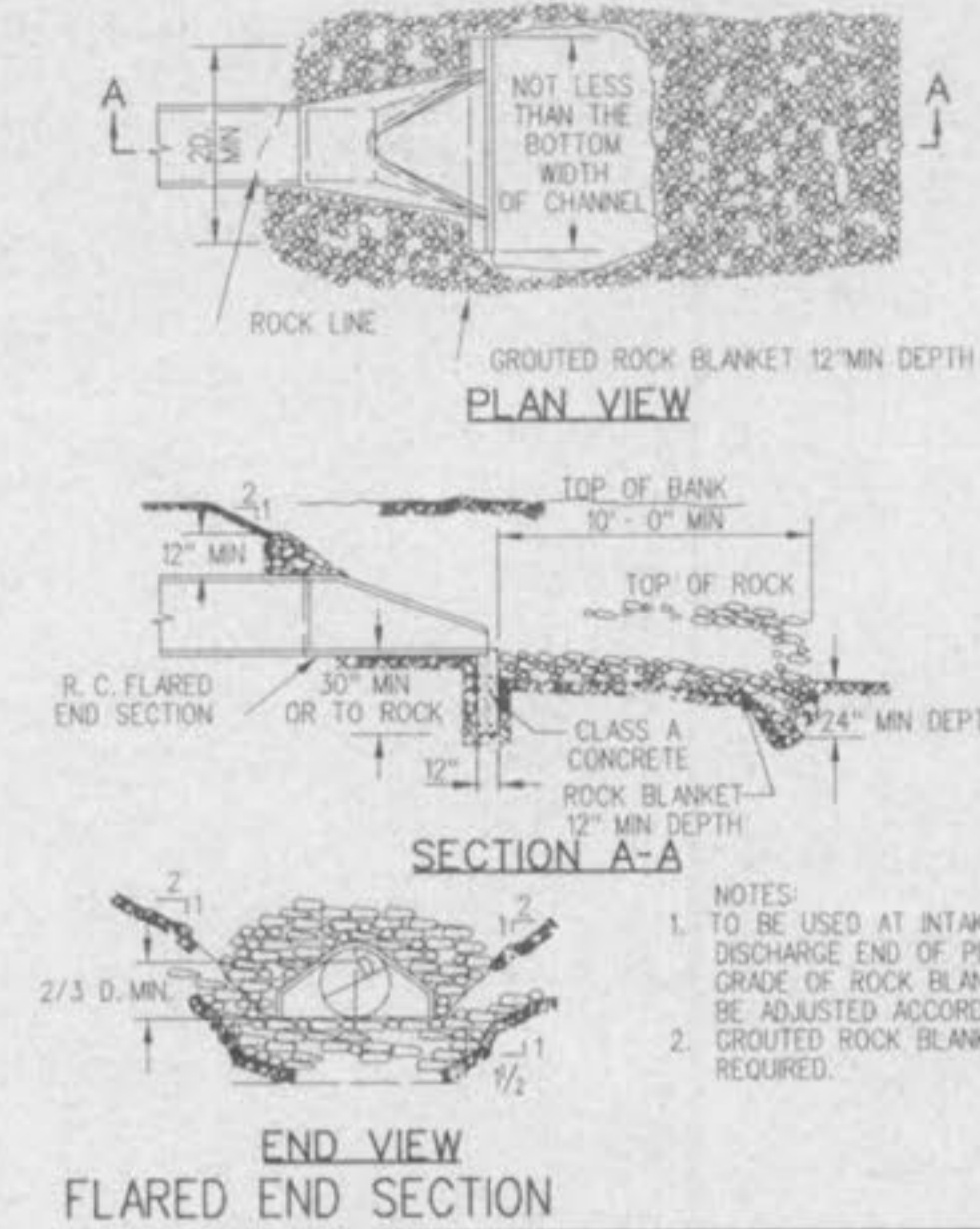
AREA INLETS PRECAST CONCRETE

14



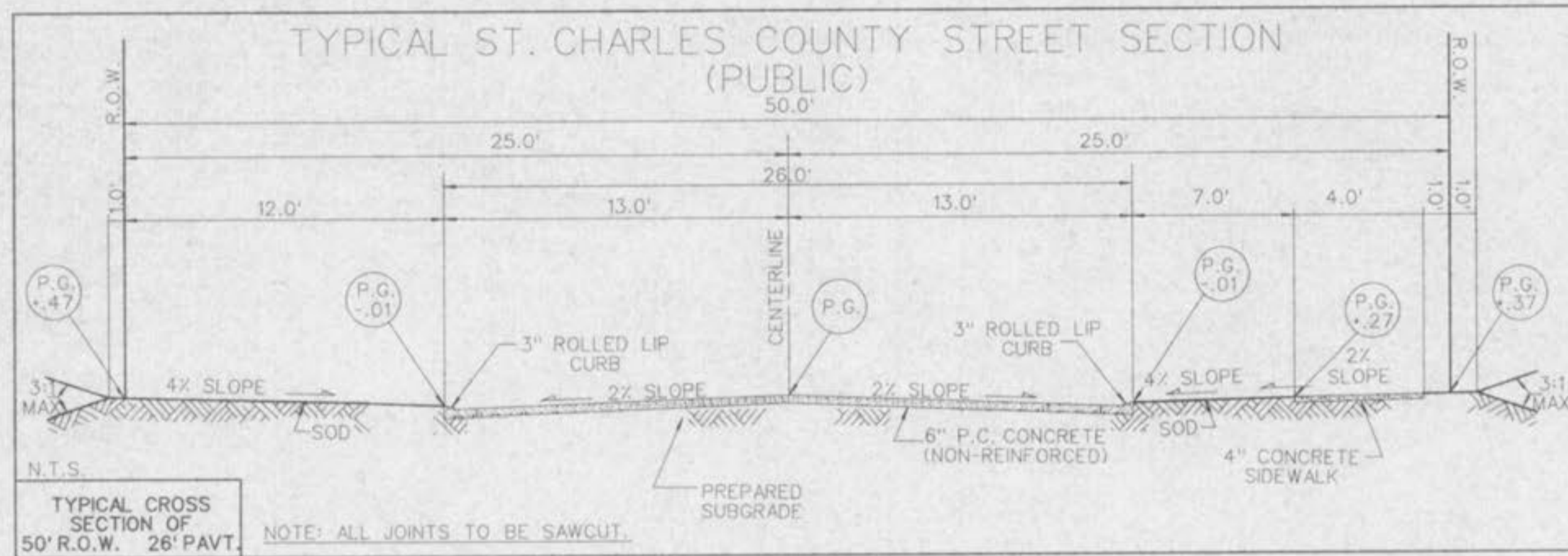
SINGLE STREET INLETS PRECAST CONCRETE

34 NTS



FLARED END SECTION

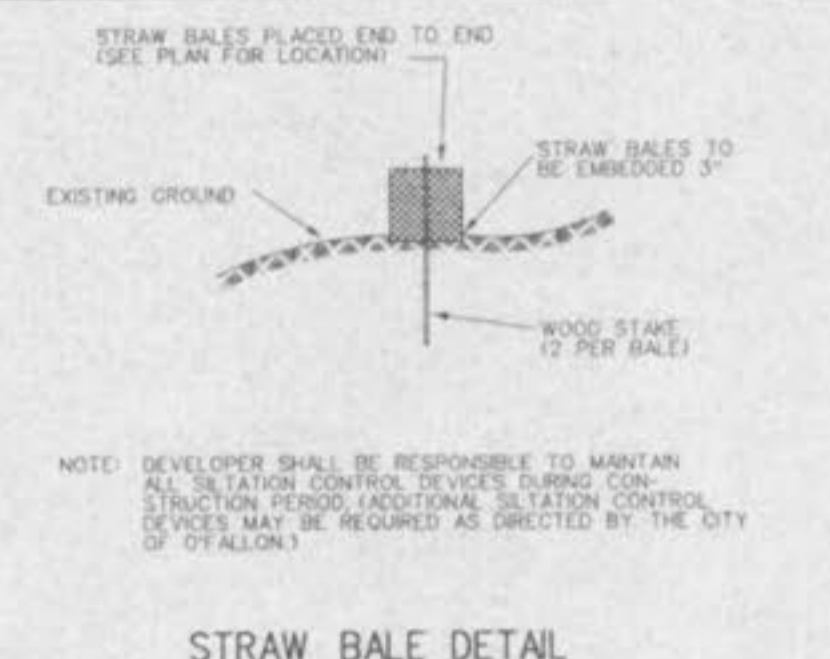
57



TYPICAL CROSS SECTION OF 50' R.O.W. 26' PAVT.

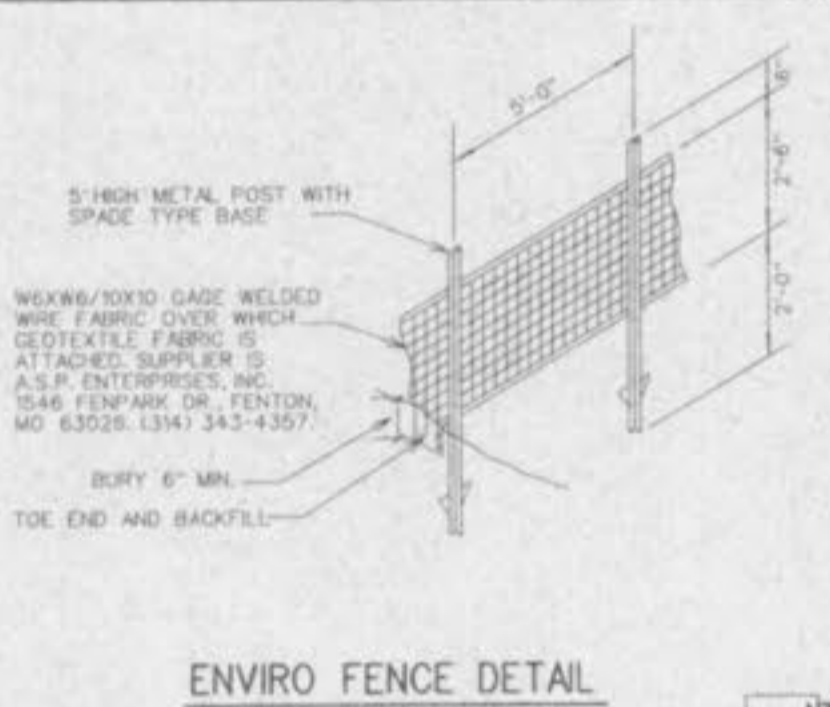
NOTE: ALL JOINTS TO BE SAWCUT.

REVISED: 2/13/04



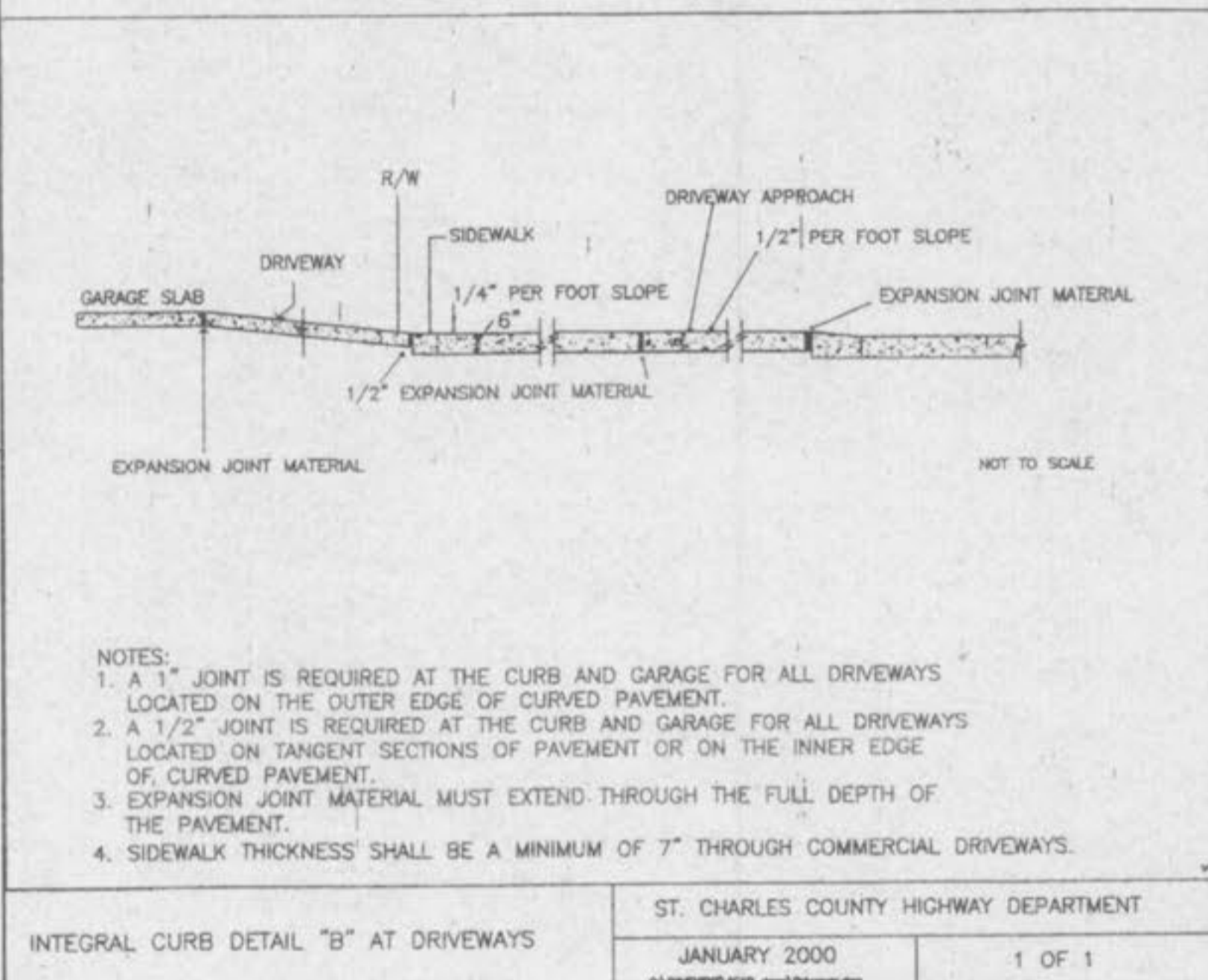
STRAW BALE DETAIL

NTS



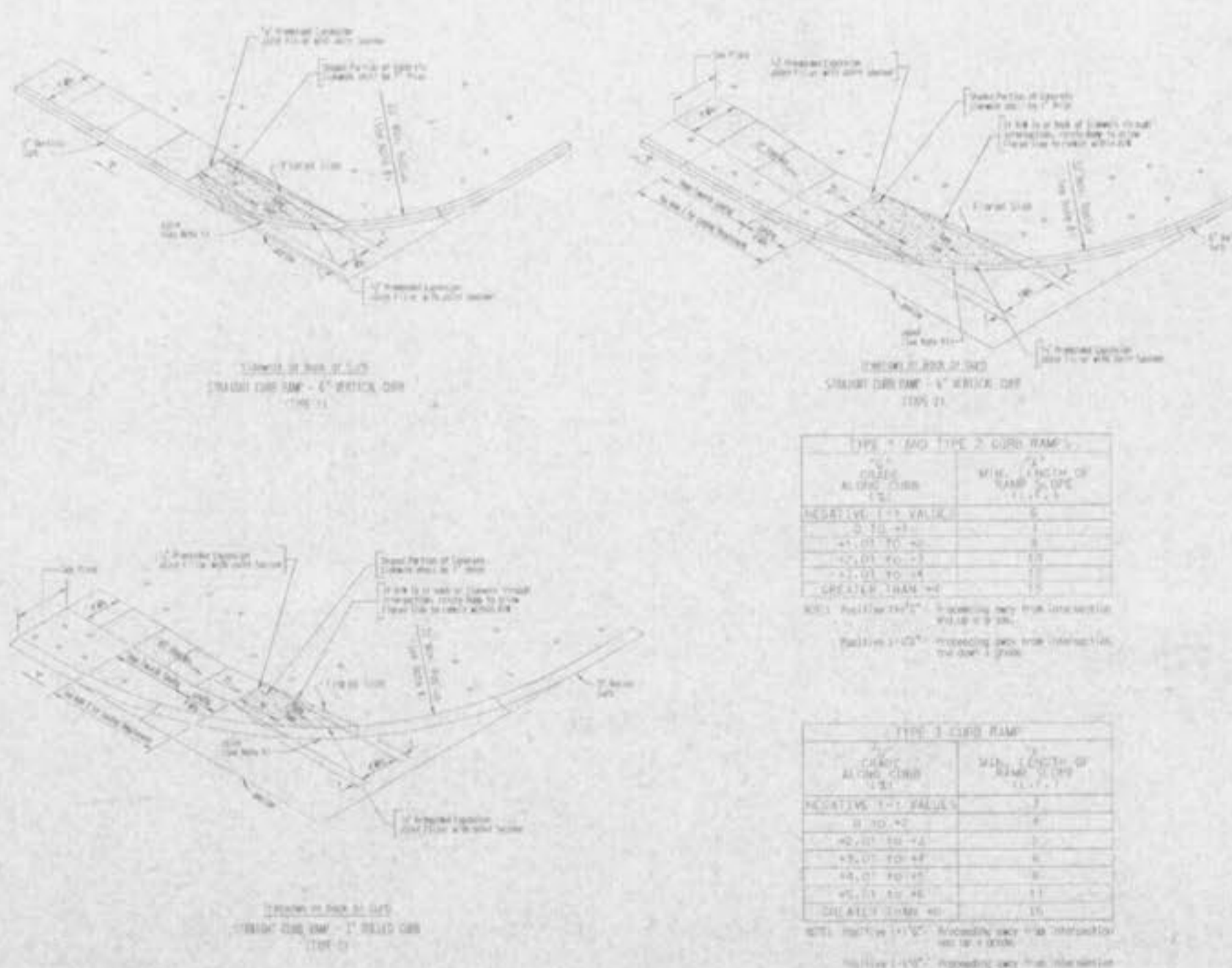
ENVIRO FENCE DETAIL

NTS

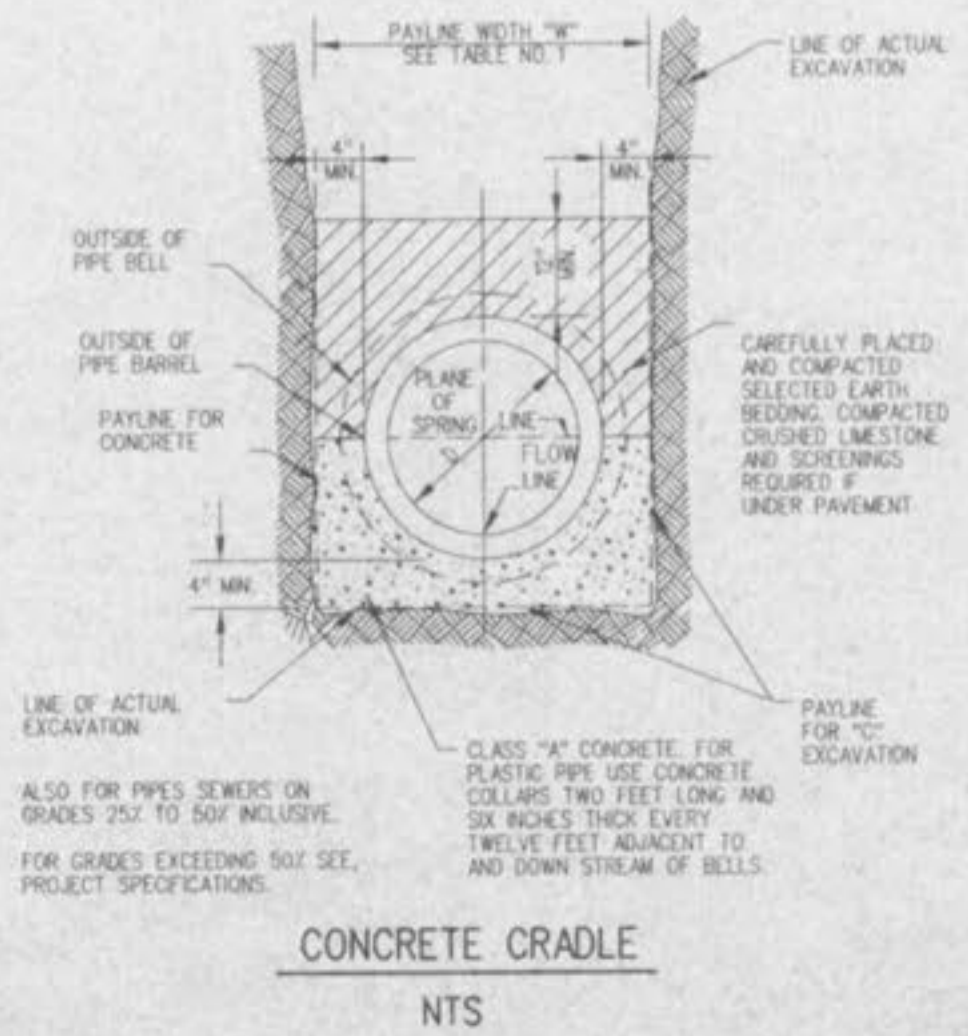


INTEGRAL CURB DETAIL "B" AT DRIVEWAYS

ST. CHARLES COUNTY HIGHWAY DEPARTMENT
JANUARY 2000
1 OF 1

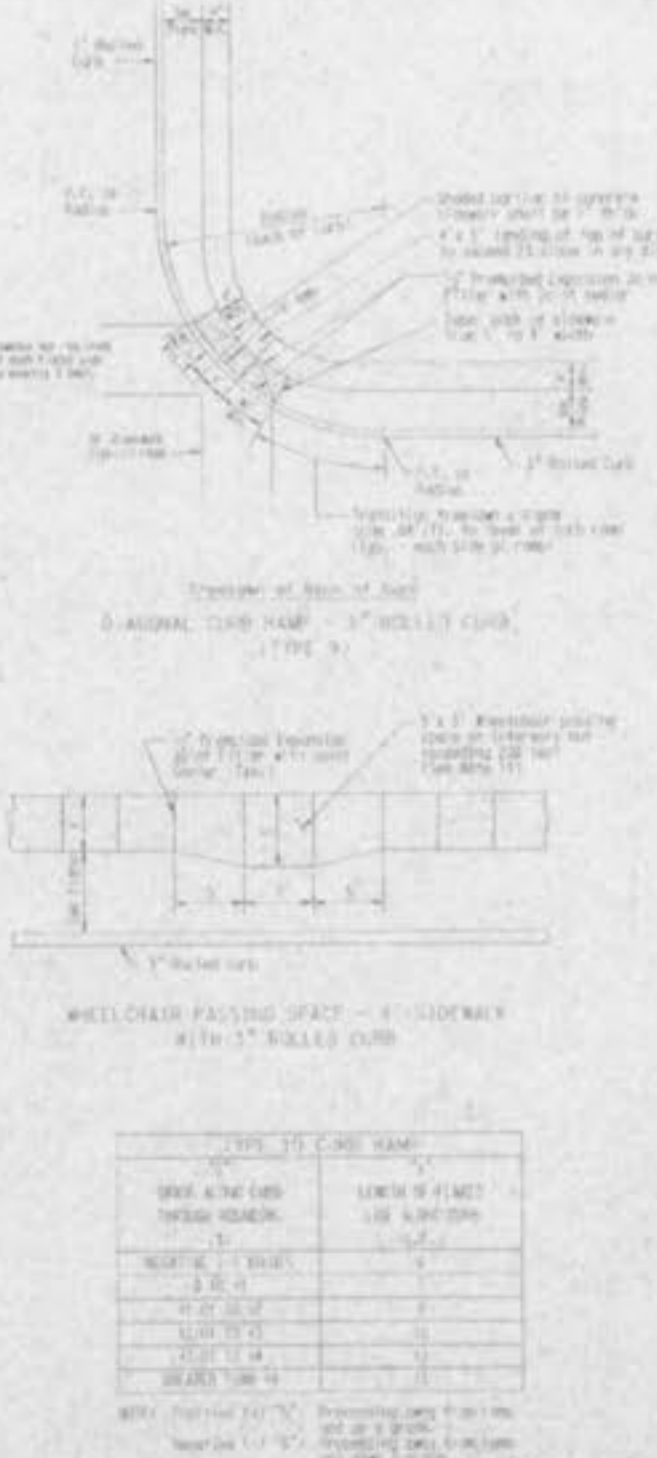
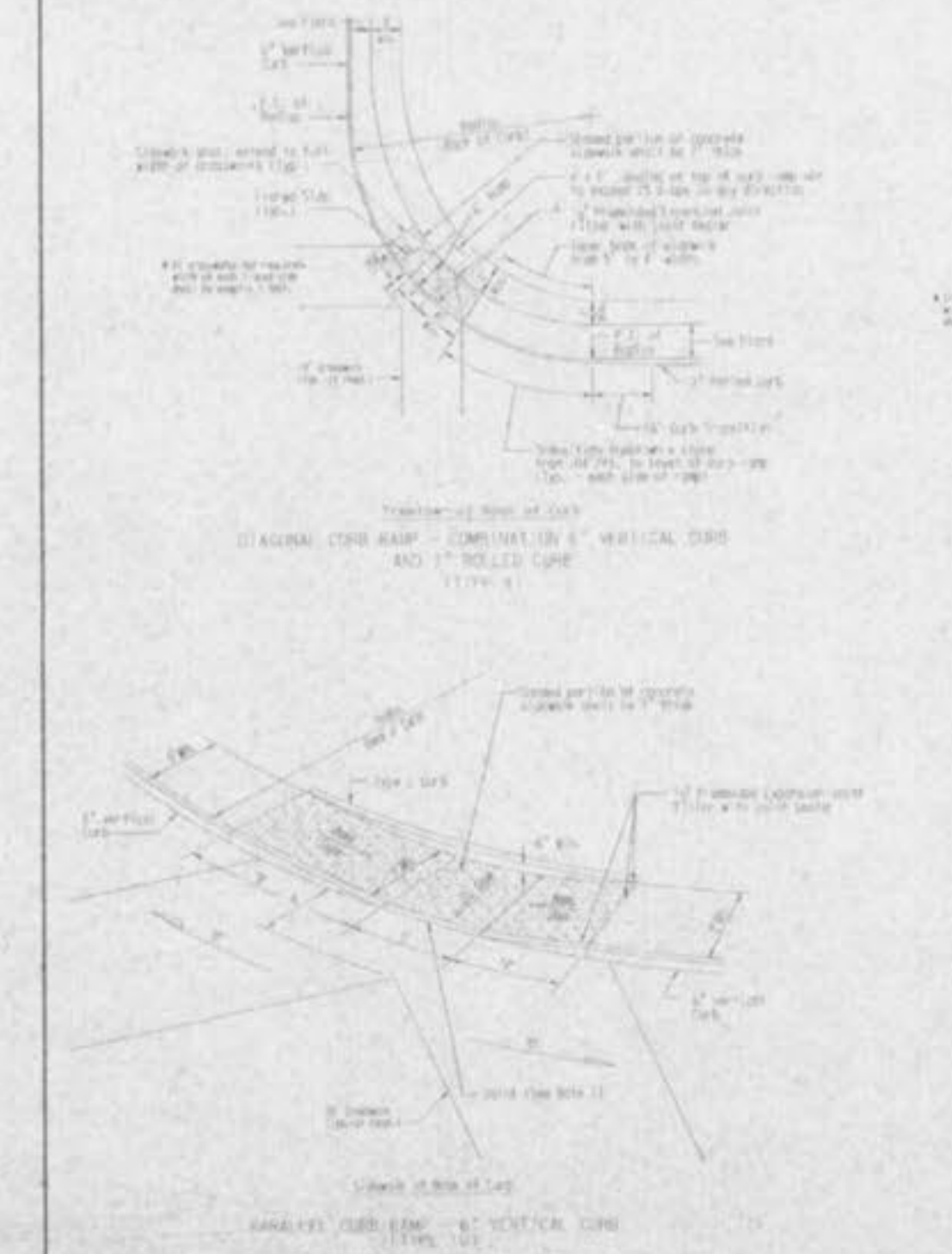


GENERAL NOTES:
1. See notes on sheets 32, 33, 34, 35, 36, 37, 38, 39, 40, 41, 42, 43, 44, 45, 46, 47, 48, 49, 50, 51, 52, 53, 54, 55, 56, 57, 58, 59, 60, 61, 62, 63, 64, 65, 66, 67, 68, 69, 70, 71, 72, 73, 74, 75, 76, 77, 78, 79, 80, 81, 82, 83, 84, 85, 86, 87, 88, 89, 90, 91, 92, 93, 94, 95, 96, 97, 98, 99, 100.



CONCRETE CRADLE

NTS



GENERAL NOTES:
1. See notes on sheets 32, 33, 34, 35, 36, 37, 38, 39, 40, 41, 42, 43, 44, 45, 46, 47, 48, 49, 50, 51, 52, 53, 54, 55, 56, 57, 58, 59, 60, 61, 62, 63, 64, 65, 66, 67, 68, 69, 70, 71, 72, 73, 74, 75, 76, 77, 78, 79, 80, 81, 82, 83, 84, 85, 86, 87, 88, 89, 90, 91, 92, 93, 94, 95, 96, 97, 98, 99, 100.

P&Z #9831.45.03

WINGHAVEN RESIDENTIAL L.L.C.
11 WINGHAVEN DRIVE
ST. LOUIS, MISSOURI 63105
PHONE (636) 537-2000

VOLZ

JOHN FERRELL REGISTERED PROFESSIONAL ENGINEER
STATE OF MISSOURI

KINGSGATE at WINGHAVEN

CONSTRUCTION DETAIL

Design By: T.B.K.
Drawn By: T.S.L.
Checked By: T.J.M.

7/24/03