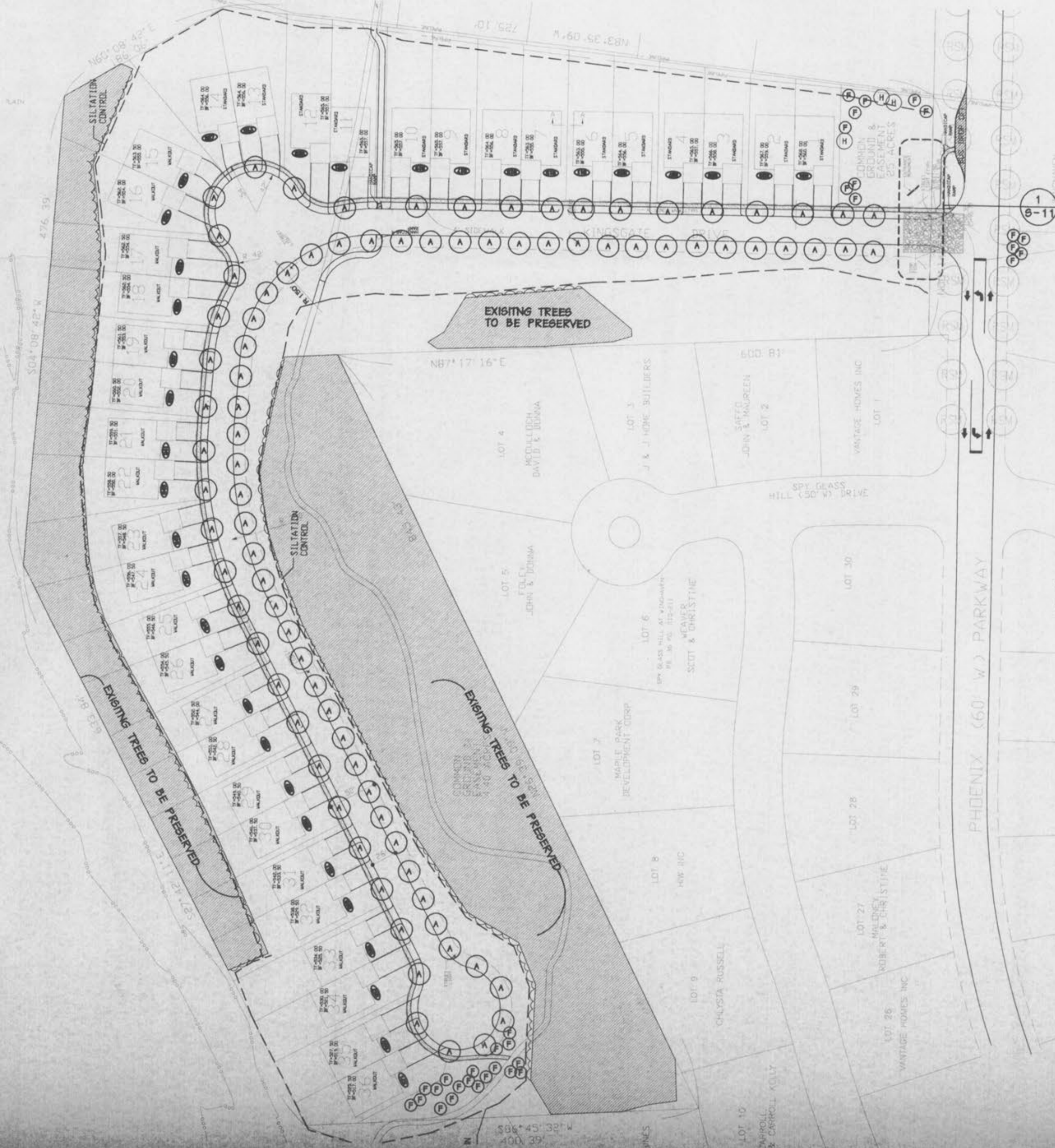


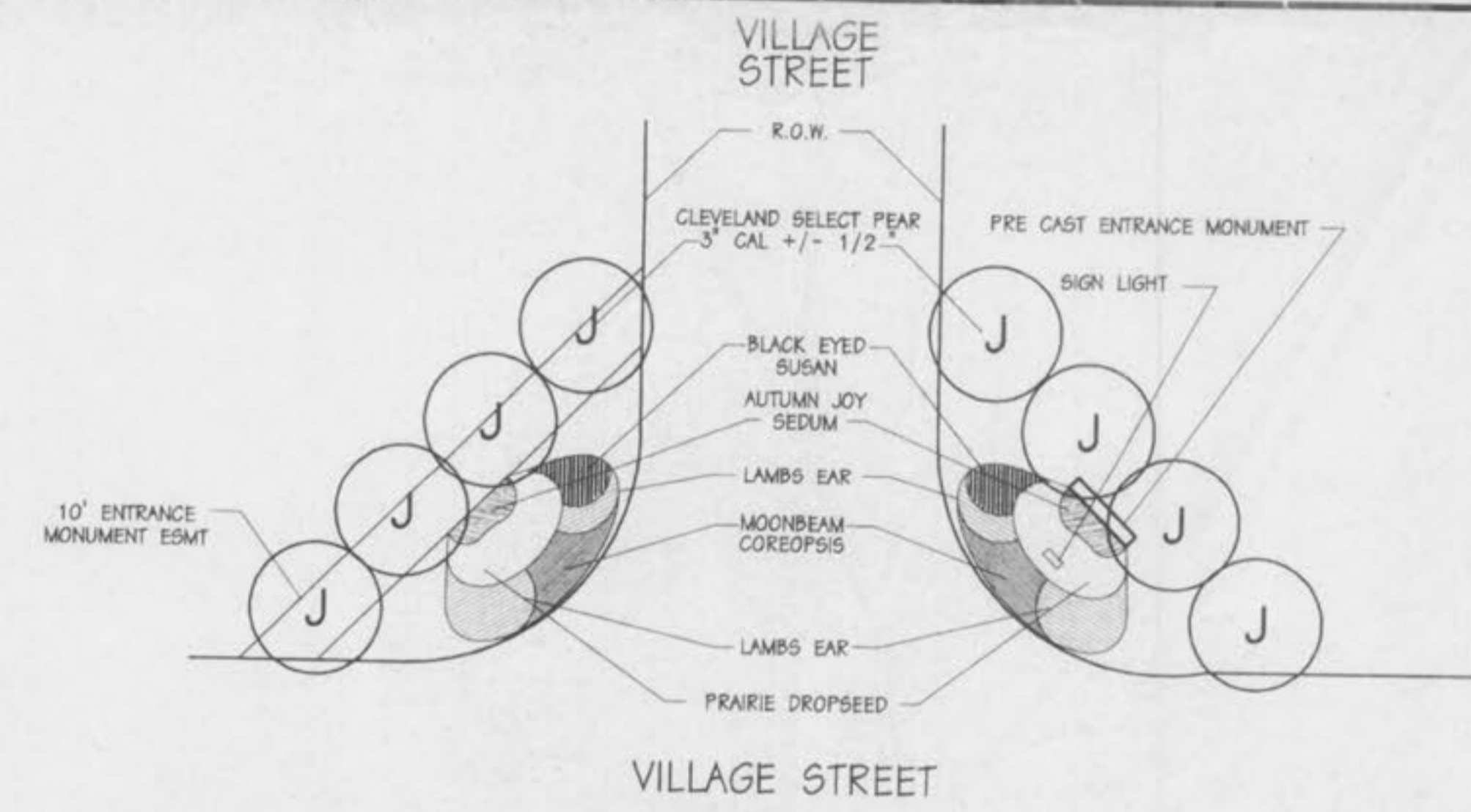
- 18"-24" Shrub: Sea Green Juniper, A. W. Spirea, Burning Bush
- 4" Pots Color Plants: Annuals, Perennials

Total Village Area that is in existing woodland: 7.5 Ac.
 Total Village Area of preserved woodland: 3.7 Ac. (49%)
 Minimum Required woodland to be preserved: 20%

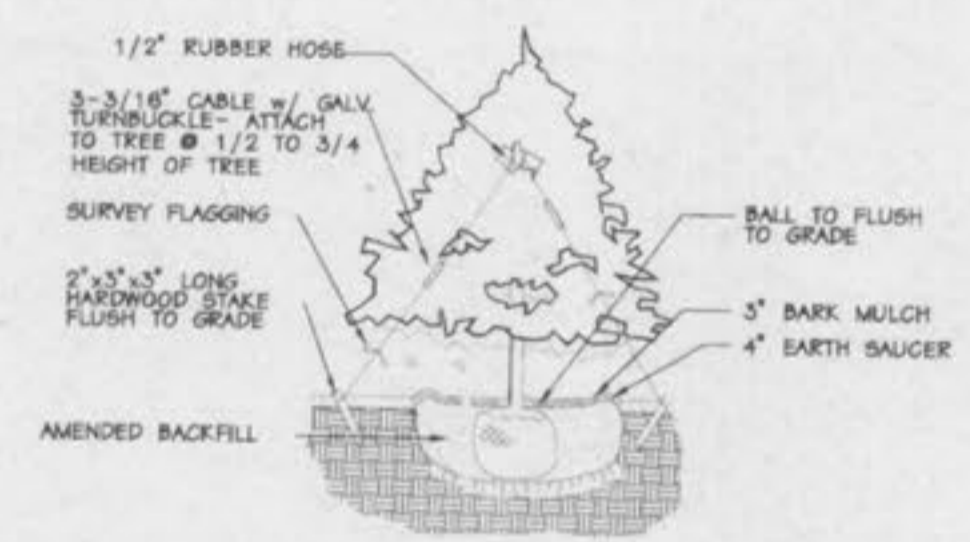
SP. NO.	QUANTITY	SIZE	BOTANICAL NAME	COMMON NAME	REMARKS
A	87	3"	Acer rubrum 'Red Sunset'	Red Sunset Maple	B&B
B	-	3"	Fraxinus americana 'autumn purple'	Autumn Purple Ash	B&B
C	0	3"	Fraxinus pennsylvanica 'patmoor'	Patmoor Green Ash	B&B
D	-	3"	Gleditsia triacanthos	Honey Locust	B&B
E	-	3"	Quercus palustris	Pin Oak	B&B
F	33	8-10"	Pinus strobus	White Pine	B&B
G	-	2"	Malus 'Robinson'	Robinson Flowering Crabapple	B&B
H	3	2"	Crataegus phaenopyrum	Washington Hawthorn	B&B
J	8	3"	Pyrus calleryana 'Cleveland Select'	Cleveland Select Pear	B&B



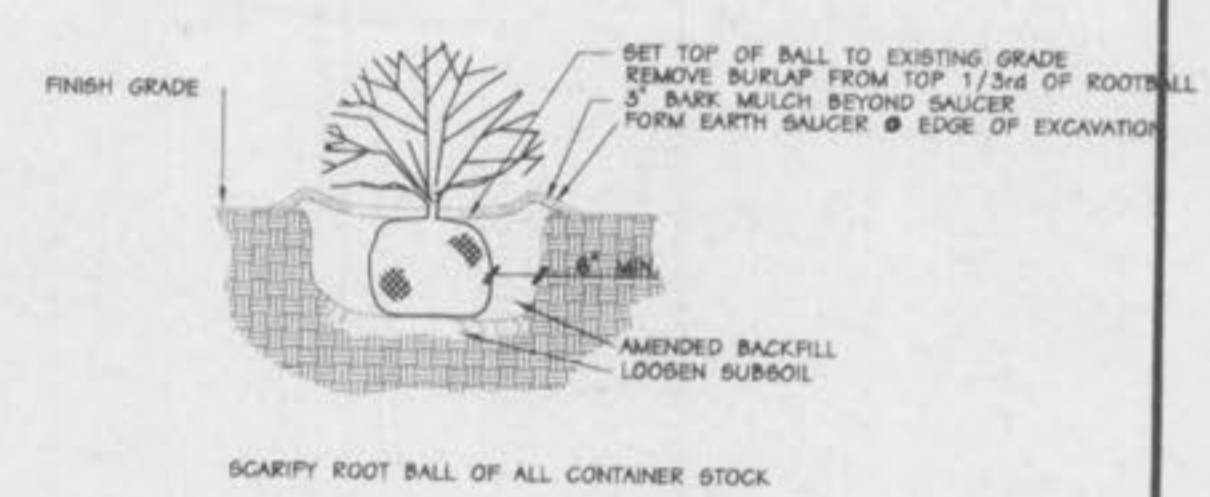
MONUMENT, AND LANDSCAPE PLAN FOR KINGSGATE VILLAGE



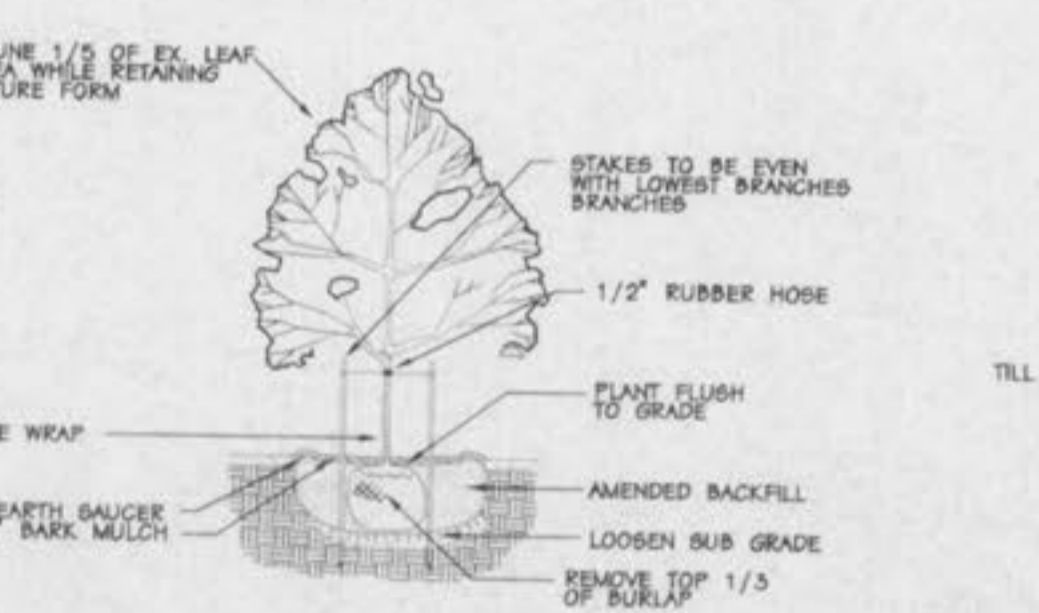
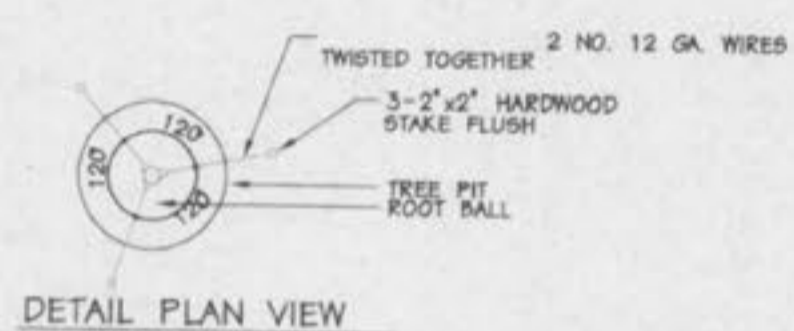
1 VILLAGE MONUMENT DETAIL BY WINGHAVEN RESIDENTIAL
 SCALE 1" = 10'



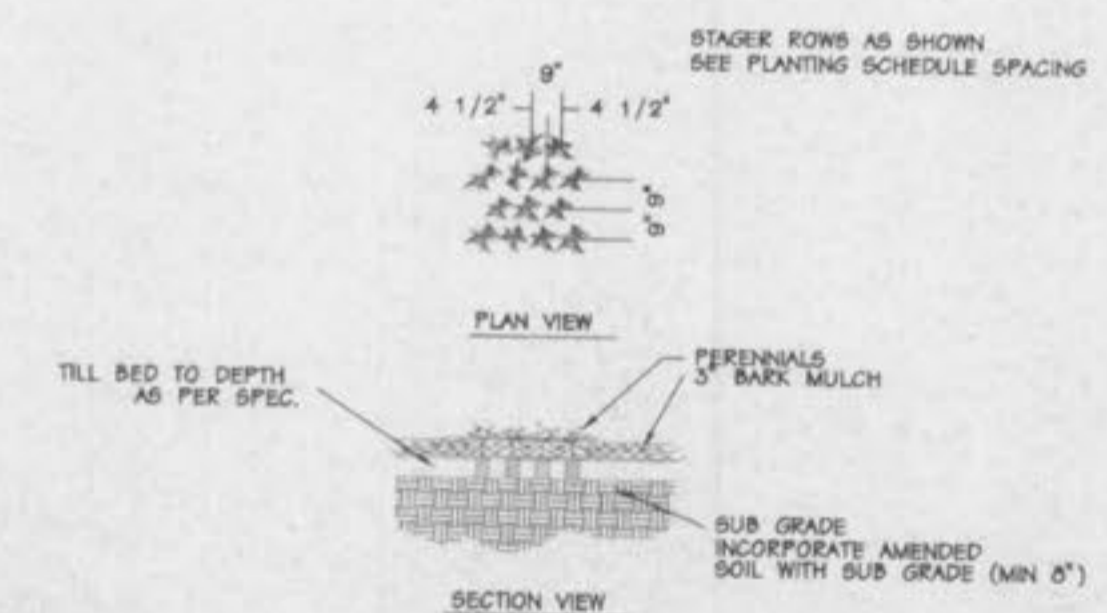
2 Evergreen Tree Planting
 N.T.S.



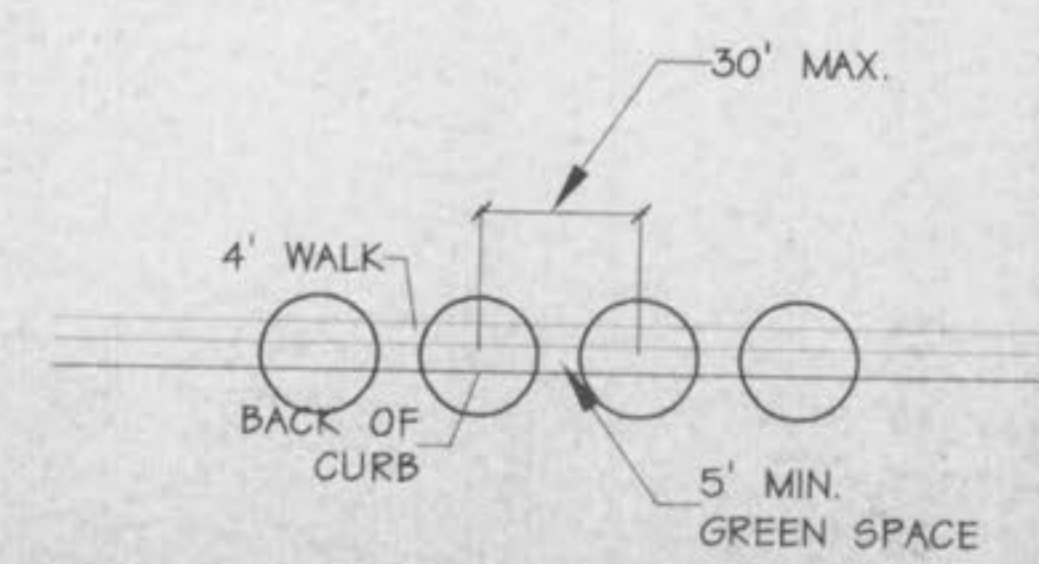
3 Shrub Tree Planting
 N.T.S.



4 Deciduous Tree Planting
 N.T.S.



5 Groundcover Planting
 N.T.S.



6 STREET TREE DETAIL
 SCALE 1" = 30'



RECEIVED
 FEB 25 2004
 ENGINEER: [Signature]

KINGSGATE VILLAGE
 AT WINGHAVEN
 A TRACT OF LAND BEING PART OF
 U.S. SURVEY 1669 TOWNSHIP
 46 NORTH - RANGE 3 EAST
 ST. CHARLES COUNTY, MISSOURI



WINGHAVEN

Date	Description	No.
06/21/03	site plan change	1
02/16/04	site plan change	2

Drawn: KAS
 Checked: DAD

Ioomis Associates

landscapeArchitects/planners
 207 South Co. Park Drive, Suite 105
 Chesterfield, MO 63005
 (636) 515-8668 Fax: (636) 515-0797
 e-mail: iap@iwoink.com

Sheet Title: Monument, Landscape Plan

Sheet No: S-13

Date: 06/05/03
 Job #: 789.010