

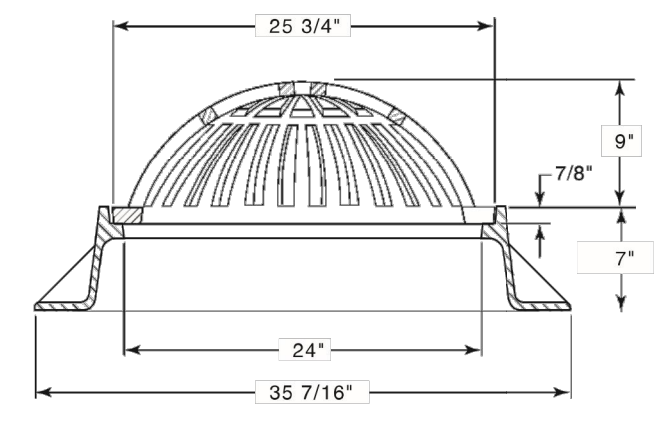
CAST IRON COVER DETAIL

MATERIAL: CAST GRAY IRON ASTM A-48, CLASS 35B
FINISH: NO PAINT UNLESS SPECIFIED ON PURCHASE ORDER
WEIGHT: 85 LBS.

DR. KRH	SCALE 1/8"=1'	TITLE 4580 COVER
APP. 11/21/2013	NEENAH FOUNDRY	NF-4580-272B
www.neenahfoundry.com	NEENAH MISSOURI 64656 PHONE 800-558-5075 LINCOLN, NEBRASKA 68529 PHONE 800-234-7468	

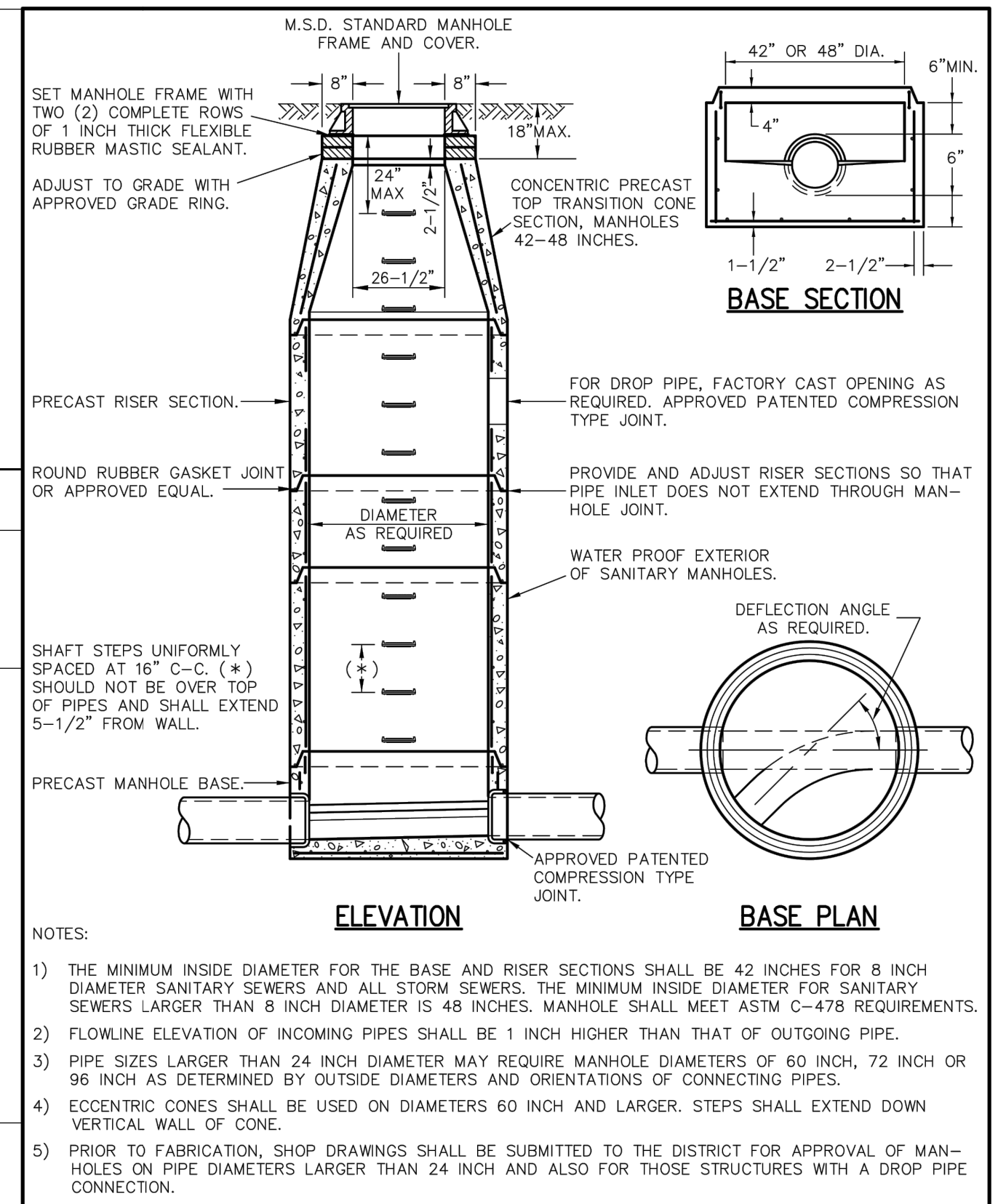
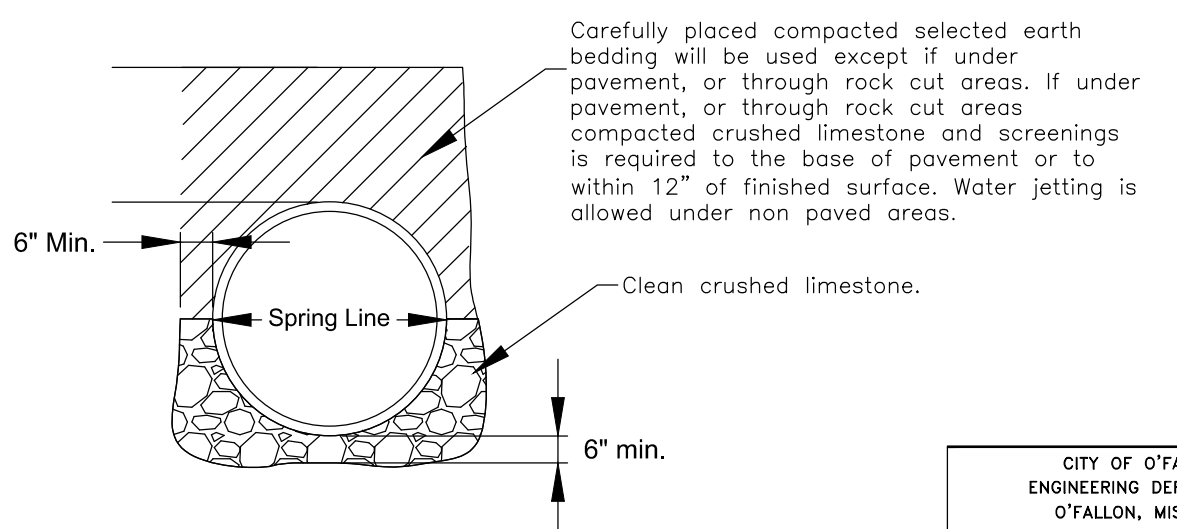
NEENAH FOUNDRY
R-2561 OR APPROVED EQUAL
Inlet Frame, Beehive Grate

CATALOG NUMBER	GRATE TYPE	SD. FT. OPEN	WEIR PERIMETER LINEAL FEET
R-2561	Beehive	2.0	6.7



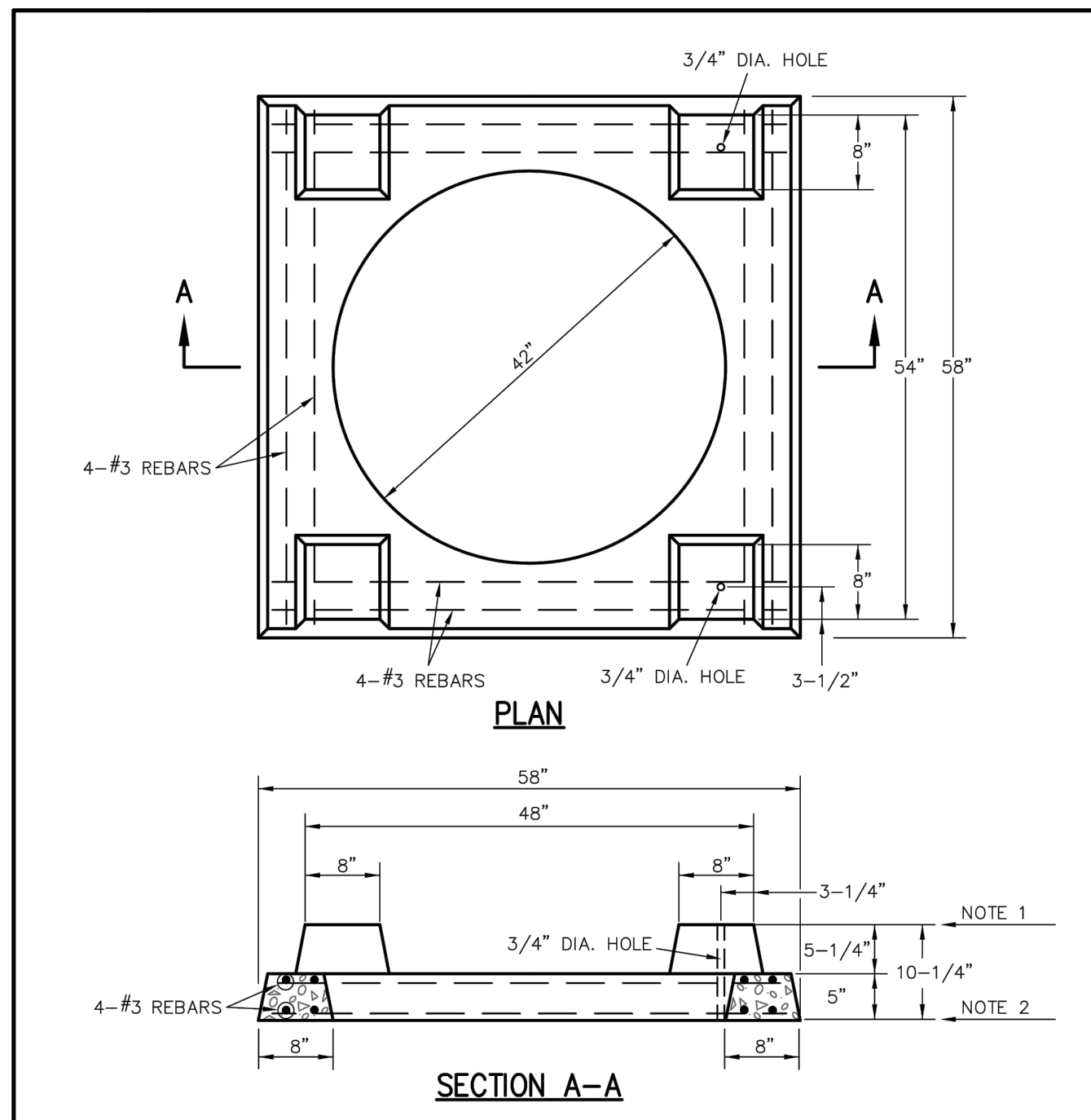
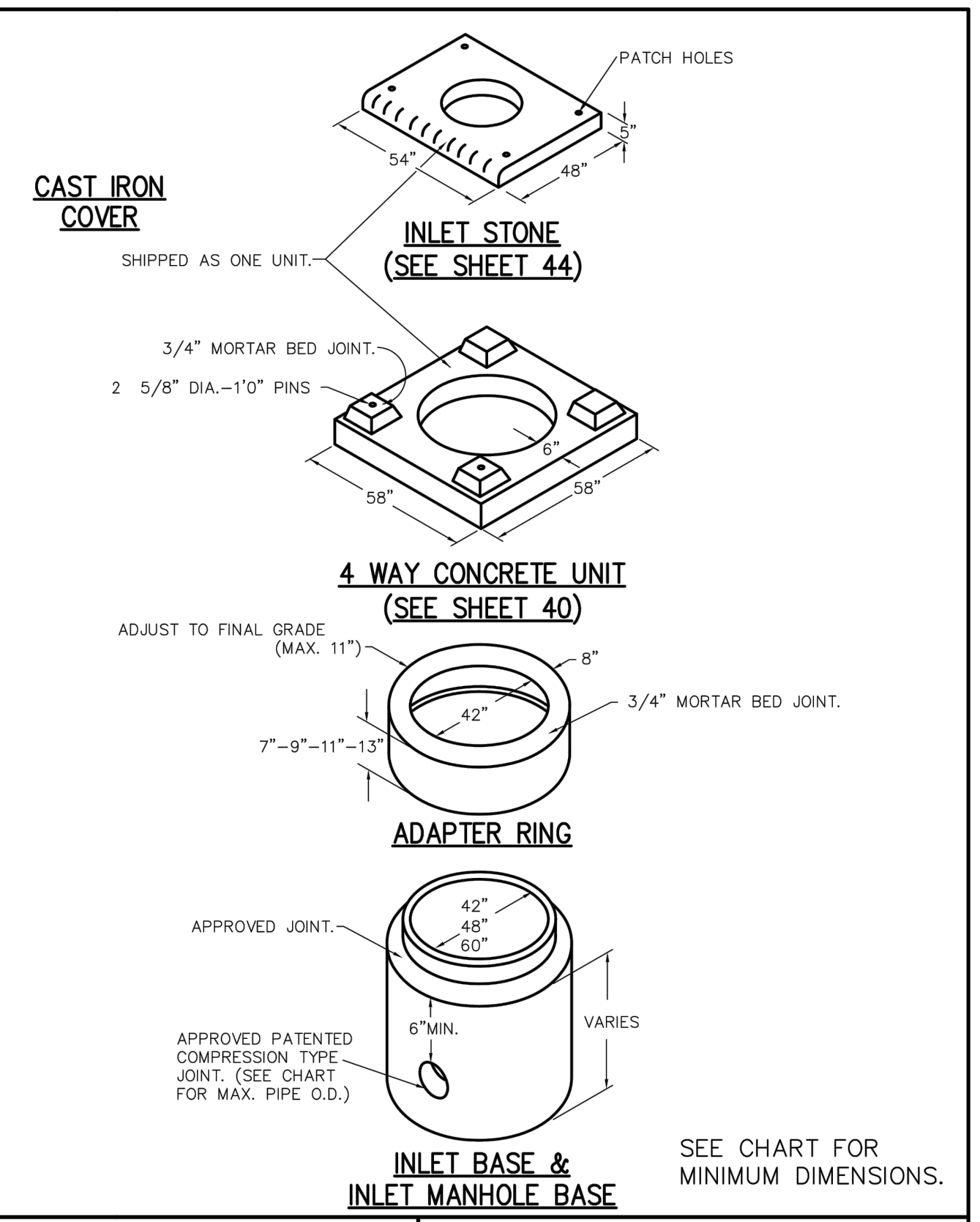
Available Lid: R-1733

CITY OF FALLON
ENGINEERING DEPARTMENT
FALLON, MISSOURI
STORM SEWER TRENCH DETAIL



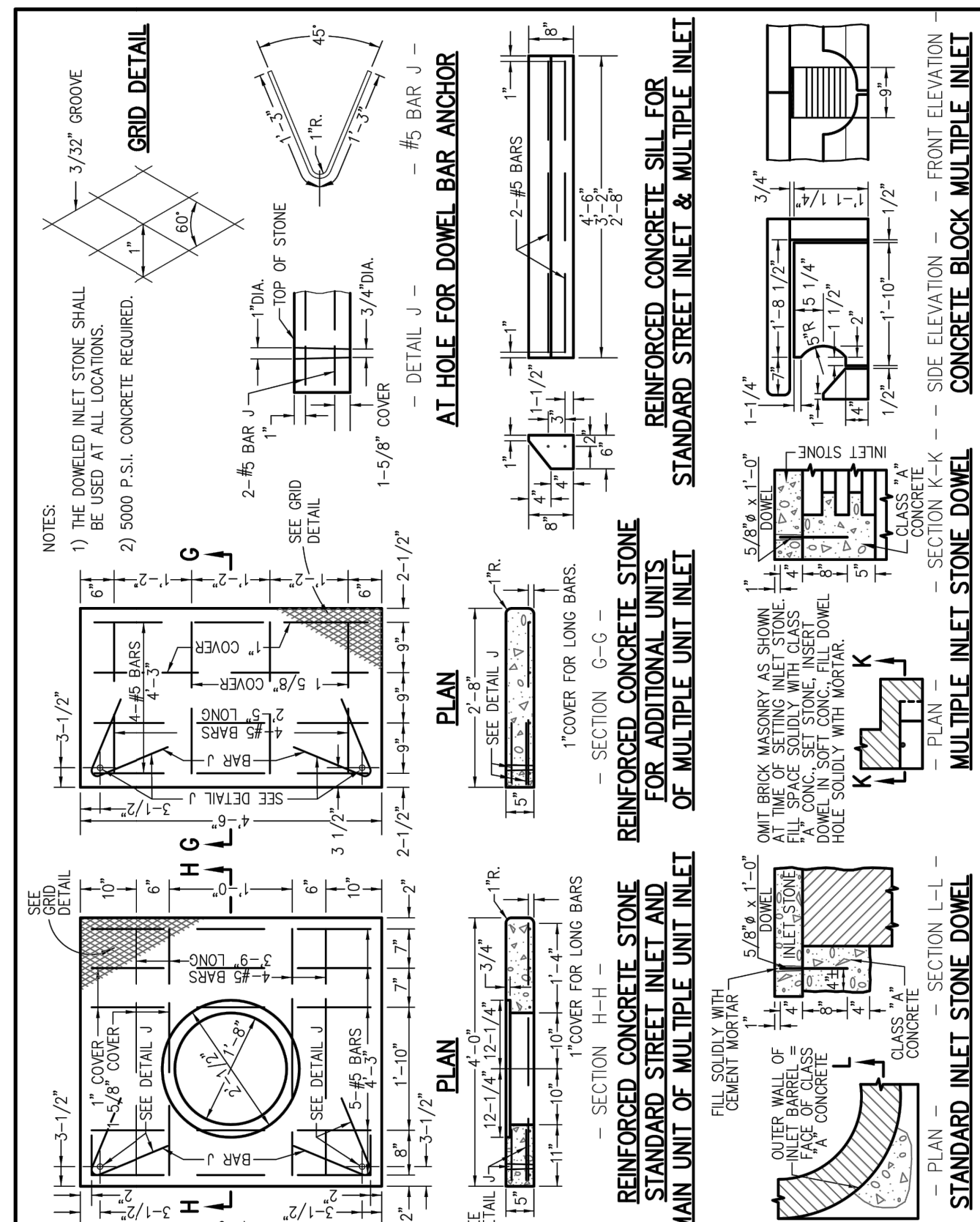
- NOTES:
- 1) THE MINIMUM INSIDE DIAMETER FOR THE BASE AND RISER SECTIONS SHALL BE 42 INCHES FOR 8 INCH DIAMETER SANITARY SEWERS AND ALL STORM SEWERS. THE MINIMUM INSIDE DIAMETER FOR SANITARY SEWERS LARGER THAN 8 INCH DIAMETER IS 48 INCHES. MANHOLE SHALL MEET ASTM C-478 REQUIREMENTS.
 - 2) FLOWLINE ELEVATION OF INCOMING PIPES SHALL BE 1 INCH HIGHER THAN THAT OF OUTGOING PIPE.
 - 3) PIPE SIZES LARGER THAN 24 INCH DIAMETER MAY REQUIRE MANHOLE DIAMETERS OF 60 INCH, 72 INCH OR 96 INCH AS DETERMINED BY OUTSIDE DIAMETERS AND ORIENTATIONS OF CONNECTING PIPES.
 - 4) ECCENTRIC CONES SHALL BE USED ON DIAMETERS 60 INCH AND LARGER. STEPS SHALL EXTEND DOWN VERTICAL WALL OF CONE.
 - 5) PRIOR TO FABRICATION, SHOP DRAWINGS SHALL BE SUBMITTED TO THE DISTRICT FOR APPROVAL OF MANHOLES ON PIPE DIAMETERS LARGER THAN 24 INCH AND ALSO FOR THOSE STRUCTURES WITH A DROP PIPE CONNECTION.

PRECAST CONCRETE MANHOLE	METROPOLITAN ST. LOUIS SEWER DISTRICT <i>Standard Details of Sewer Construction</i>
Dr. WSH/SAM Ch. J.C.K.	2009 SHEET 21 (REV)

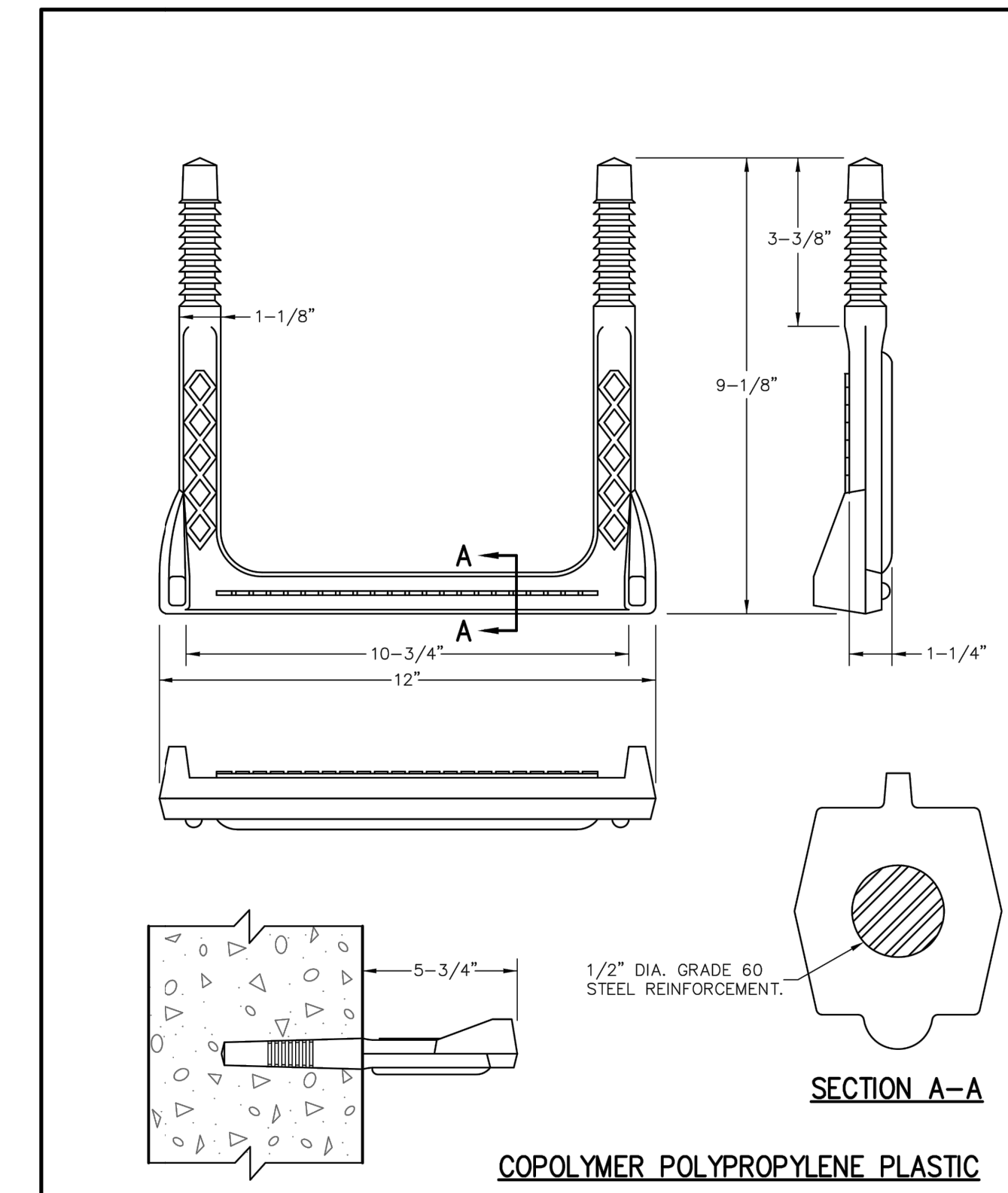


- NOTES:
- 1) SET STANDARD INLET STONE IN 3/4" MORTAR BED AND DOWEL WITH 5/8" DIA. 1'-0" LONG PINS AND GROUT.
 - 2) RAISE TO FINAL GRADE WITH COURSES OF BRICK AND SET THE UNIT TO BASE WITH 3/4" MORTAR BED.
 - 3) THIS UNIT TO BE USED WITH 42 INCH I.D. BASE.
 - 4) 5000 P.S.I. CONCRETE IS REQUIRED.

PRECAST CONCRETE UNIT FOR 4 WAY AREA INLET	METROPOLITAN ST. LOUIS SEWER DISTRICT <i>Standard Details of Sewer Construction</i>
Dr. DAB/SAM Ch. J.C.K.	2009 SHEET 40



STANDARD - INLET STONES, BLOCKS & DESIGN DETAILS	METROPOLITAN ST. LOUIS SEWER DISTRICT <i>Standard Details of Sewer Construction</i>
Dr. WSH/SAM Ch. J.C.K.	2009 SHEET 44



MANHOLE STEP FOR PRECAST & CAST-IN-PLACE MANHOLE	METROPOLITAN ST. LOUIS SEWER DISTRICT <i>Standard Details of Sewer Construction</i>
Dr. D.A.B. Ch. J.C.K.	2009 SHEET 58

DWG: C:\projects\homer\shifrin_nashah_nope\esdms\23590\Details.dwg
SAVE DATE: 10/19/2018 2:34:27 PM
PLOT DATE: 10/19/2018 2:37:49 PM
OPERATOR: NASHAH

2018 STORM WATER
IMPROVEMENT PROJECT
WINGHAVEN / HAWK RUN DRIVE

HORNER SHIFRIN
101 LAURA K DRIVE, STE. 101, FALLON, MO 63366-3991
636-529-6226 • FAX 636-529-2910 • WWW.HORNERSHIFRIN.COM
REGISTERED PROFESSIONAL ENGINEERING
CERTIFICATE OF AUTHORITY #00159
EXPIRATION DATE: DECEMBER 31, 2018

STATE OF MISSOURI
APRIL M. GIESSEN
REGISTERED PROFESSIONAL ENGINEER
NO. 2011004592

CITY OF FALLON 100 N. MAIN ST. O'FALLON, MO 63366	10/17/18
P+Z No.	Approval Date
City No.	Page No.
C6.2	