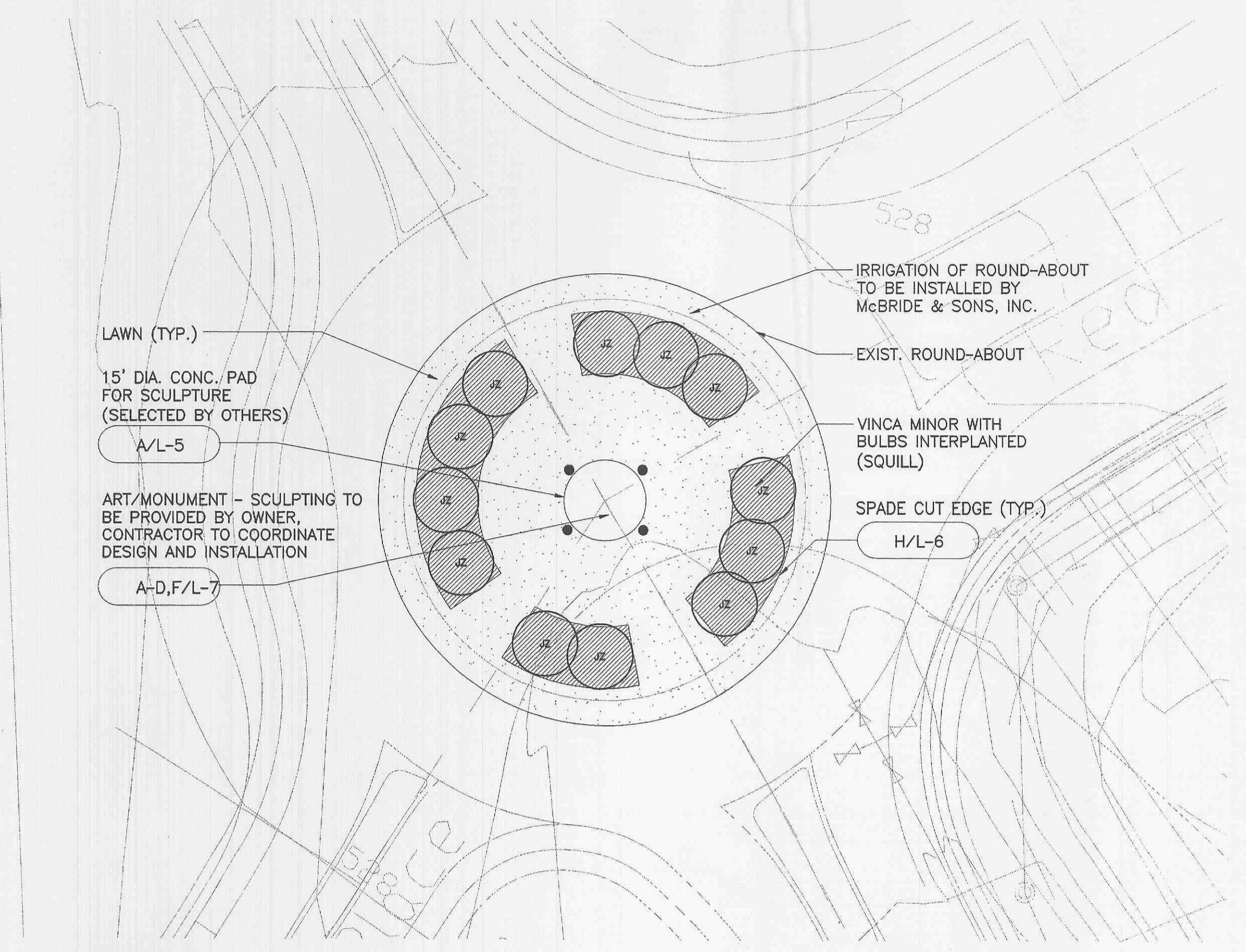
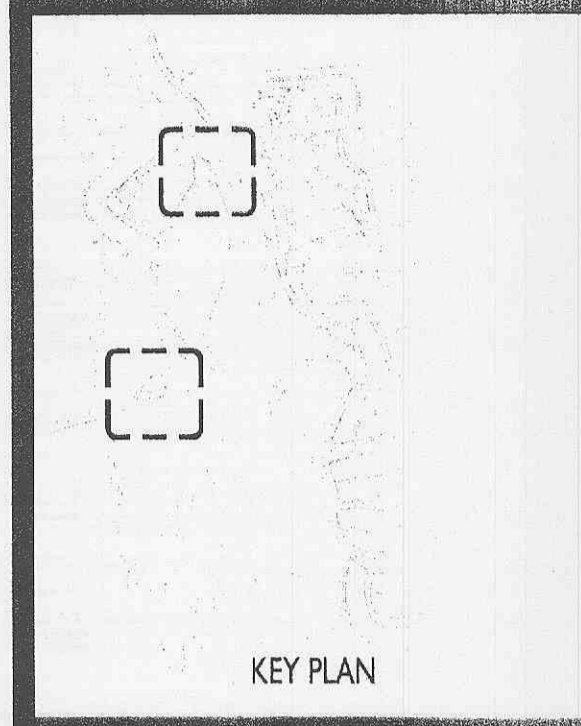


A PHOENIX PARKWAY ROUND-ABOUT PLANTING PLAN



B RED HAWK ROUND-ABOUT PLANTING PLAN



Wetland and Boardwalk Project
WINGHAVEN
 C. Fallon, Missouri

ISSUED:

REVISIONS:

NO	DESCRIPTION	BY	DATE
1	ENTIRE SHEET	CM	04/23/02
2	ENTIRE SHEET	CM	07/24/02
3	ENTIRE SHEET	CM	09/25/02

DRAWN: SAW
 REVIEWED: SAW

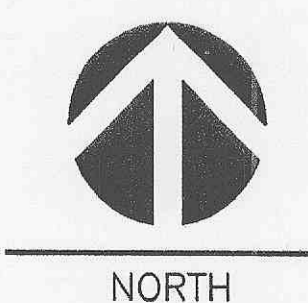
SHEET NUMBER:
L-4

SHEET 4 OF 7

PROJECT NUMBER:
 02-0112-05

PLANT SCHEDULE									
SYM	QTY	BOTANICAL NAME	CULTIVAR	COMMON NAME	SIZE	METHOD	SPACING	DETAIL	COMMENTS
EVERGREEN TREES									
CGS	3	<i>Picea pungens</i>		Colorado Green Spruce	6'-7'	BB	As Shown	C/L-6	
DECIDUOUS TREES									
RM	5	<i>Acer rubrum</i>		Red Maple	3"	BB	As Shown	B/L-6	
HRB	6	<i>Betula nigra</i>	'Heritage'	River Birch	2 1/2"	BB	As Shown	B/L-6	FULL, DENSE, MATCHED SPECIMEN QUALITY
SH	4	<i>Carya ovata</i>		Shagbark Hickory	3 Gal.	Cont.	As Shown	B/L-6	RPM GROWN
WO	3	<i>Quercus alba</i>		White Oak	1 1/2"	BB	As Shown	B/L-6	
SWO	5	<i>Quercus bicolor</i>		Swamp White Oak	2"	BB	As Shown	B/L-6	
SO	6	<i>Quercus imbricaria</i>		Shingle Oak	2"	BB	As Shown	B/L-6	
BO	10	<i>Quercus macrocarpa</i>		Bur Oak	2"	BB	As Shown	B/L-6	
AL	7	<i>Tilia americana</i>	'Rosehill'	American Linden	3"	BB	As Shown	B/L-6	
GA	6	<i>Fraxinus pennsylvanica</i>	'Cimmaron'	Green Ash	3"	BB	As Shown	B/L-6	
WA	7	<i>Fraxinus americana</i>	'Autumn Purple'	White Ash	3"	BB	As Shown	B/L-6	
WH	5	<i>Crateagus phaenopyrum</i>		Washington Hawthorn	2"	BB	As Shown	D/L-6	FULL, DENSE, MATCHED SPECIMEN QUALITY
JZ	12	<i>Zelkova serrata</i>		Japanese Zelkova	3"	BB	As Shown	B/L-6	
rb	19	<i>Cercis canadensis</i>		RedBud	1 1/2"	BB	As Shown	D/L-6	MULTI-STEM, MATCHED SPECIMEN QUALITY
SB	5	<i>Amelanchier x</i>	'Autumn Brilliance'	Service Berry	1 1/2"	BB	As Shown	D/L-6	MULTI-STEM, MATCHED SPECIMEN QUALITY
CA	20	<i>Malus</i>	'Prairiefire'	Prairiefire Crabapple	1 1/2"	BB	As Shown	D/L-6	FULL, DENSE, MATCHED SPECIMEN QUALITY
H	2	<i>Celtis occidentalis</i>		Hackberry	1 1/2"	BB	As Shown	D/L-6	
SHRUBS/ORNAMENTAL GRASSES/GROUNDCOVERS									
NB	17	<i>Physocarpus opulifolius</i>		Ninebark	5 Gal.	Cont.	As Shown	E/L-6	FULL, DENSE, MATCHED SPECIMEN QUALITY
BB	5	<i>Cephananthus occidentalis</i>		Buttonbrush	3 Gal.	Cont.	4' O.C.	E/L-6	RPM, MATCHED SPECIMEN QUALITY
RDG	170	<i>Cornus alba</i>	'Red Gnome'	Siberian Dogwood	30"	Cont.	42" O.C.	E/L-6	FULL, DENSE, MATCHED SPECIMEN QUALITY
DFG	31	<i>Pennisetum alopecuroides</i>	'Hameln'	Dwarf Fountain Grass	1 Gal.		24" O.C.	G/L-6	PLANTING DEPTH: 0"-12"
FG	12	<i>Pennisetum alopecuroides</i>		Fountain Grass	2 Gal.		42" O.C.	G/L-6	PLANTING DEPTH: 0"-12"
KF	19	<i>Calamagrostis x acutiflora</i>	'Karl Foerster'	Karl Fosters Reed Grass	2 Gal.		30" O.C.	G/L-6	PLANTING DEPTH: 0"-12"
VM	2070	<i>Vinca Minor</i>		Vinca Minor	4" Pot	Cont.	12" O.C.	F/L-6	
NATIVE GRASS SEED									
aa	1,850	s.y.		Wetland Prairie Mix	Seed	Sprdr	Seed	see spec	
bb	5,190	s.y.		Slope Prairie Mix	Seed	Sprdr	Seed	see spec	
LAWN									
seed	7,450	s.y.		Tall Turf Fescue (Lawn)	Seed	Sprdr	Seed	see spec	

I hereby certify that this plan, specification or report was prepared by me or under my supervision and that I am a duly registered Landscape Architect under the laws of the State of Missouri.
 Richard M. Kohnen
 L.S. 71
 9.26.02



SCALE: 1" = 20' - 0"