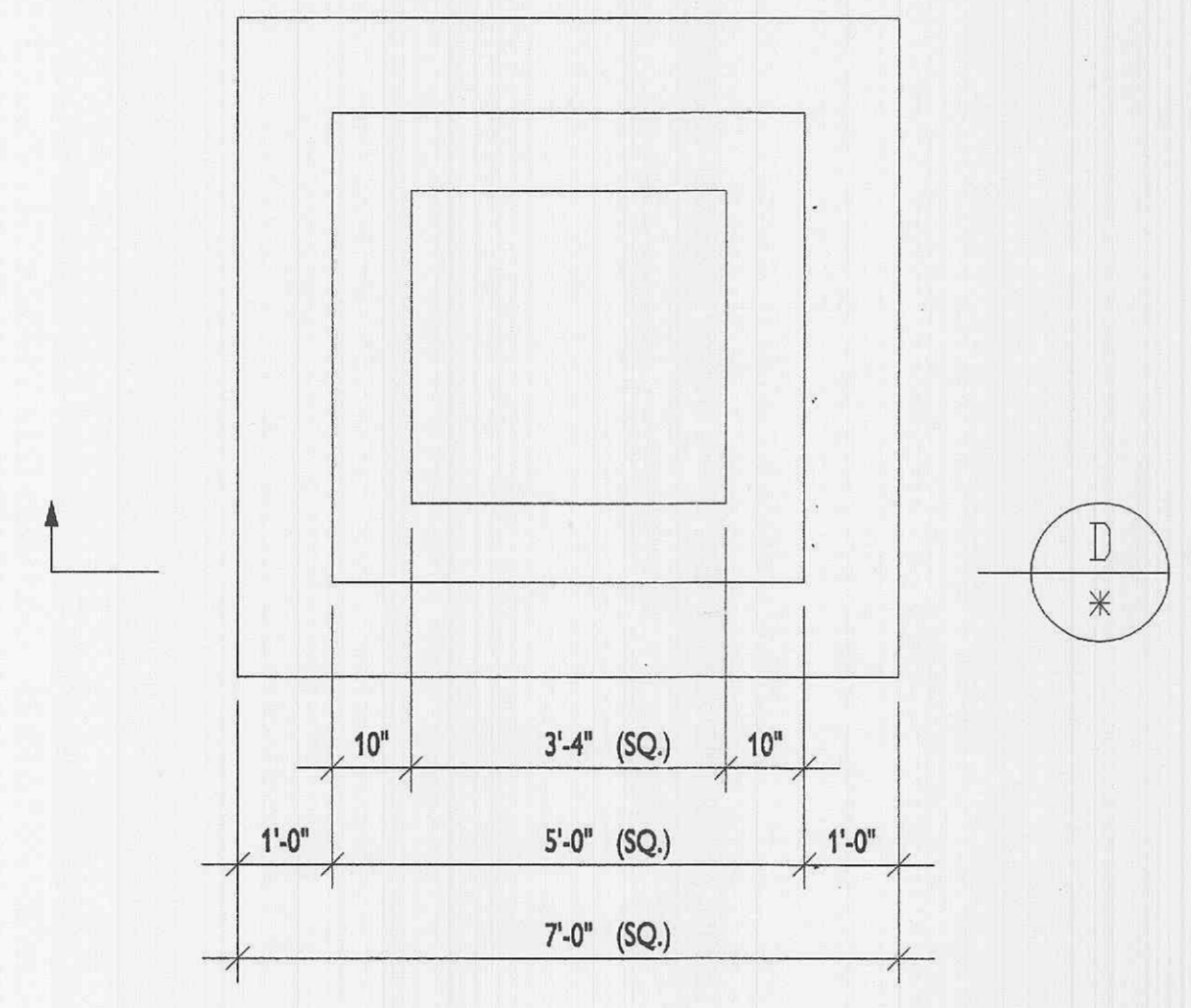
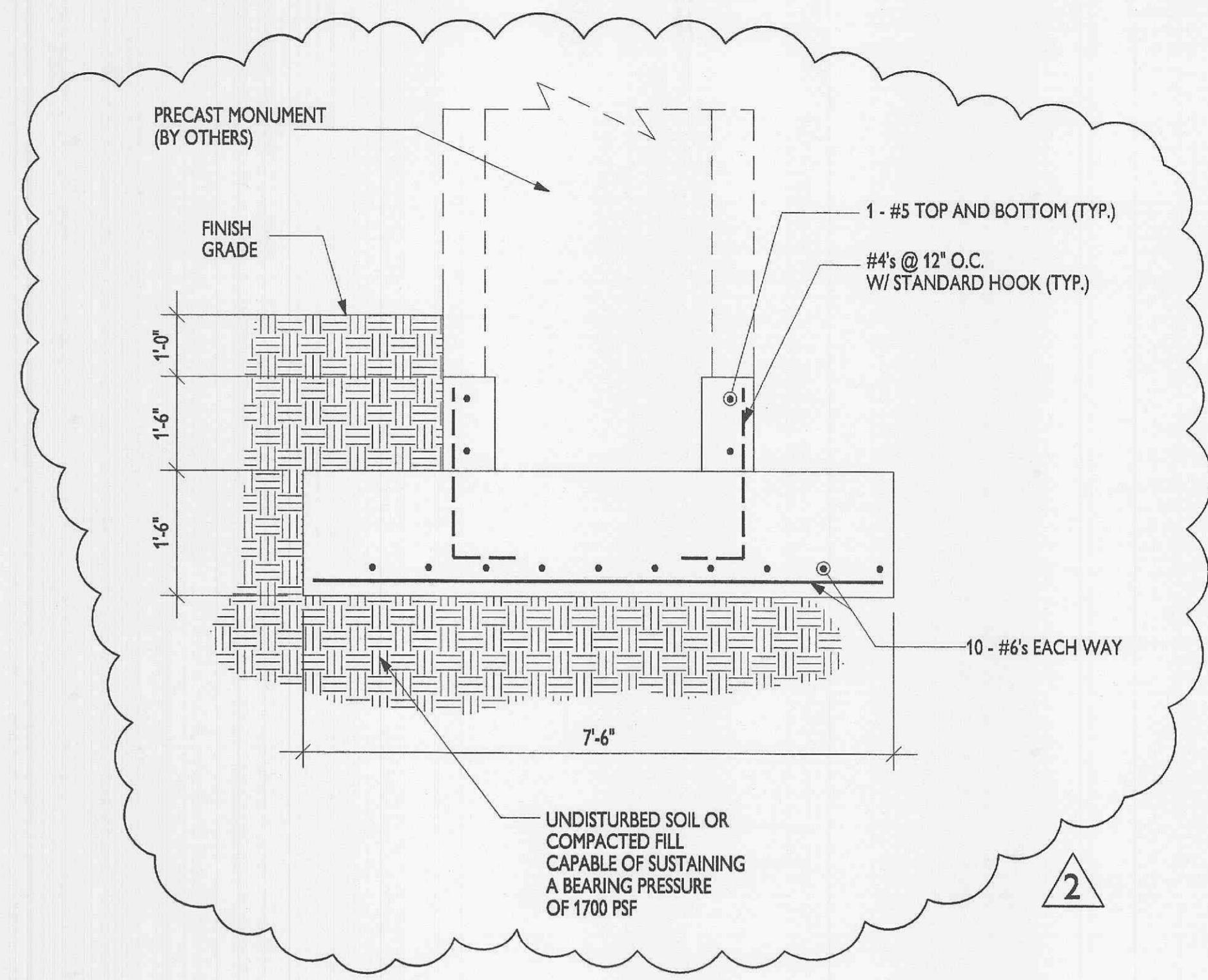


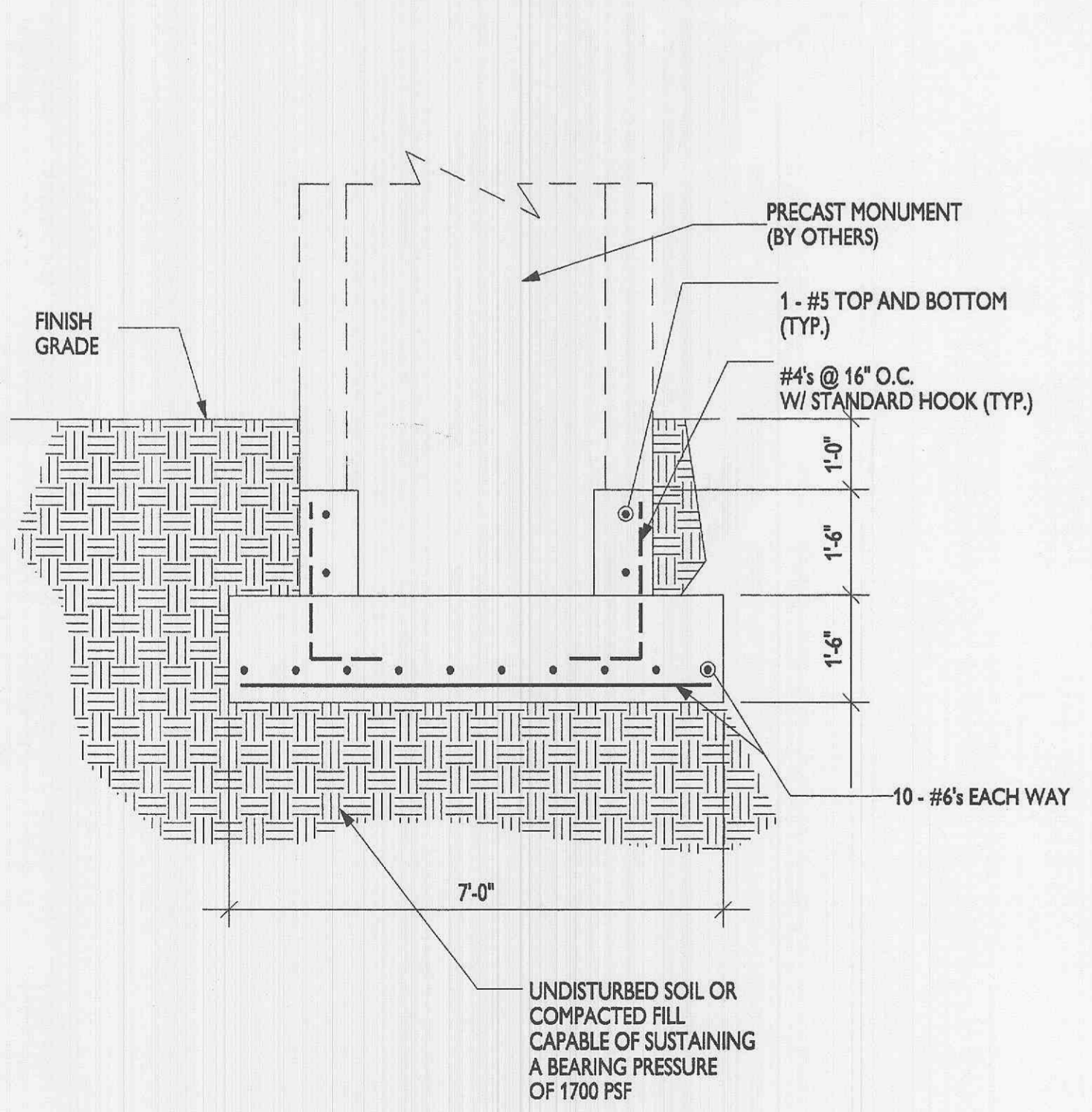
A MONUMENT FOUNDATION PLAN FOR 16' TALL MONUMENT W/ SCULPTURE
 SCALE 1/2"=1'-0"



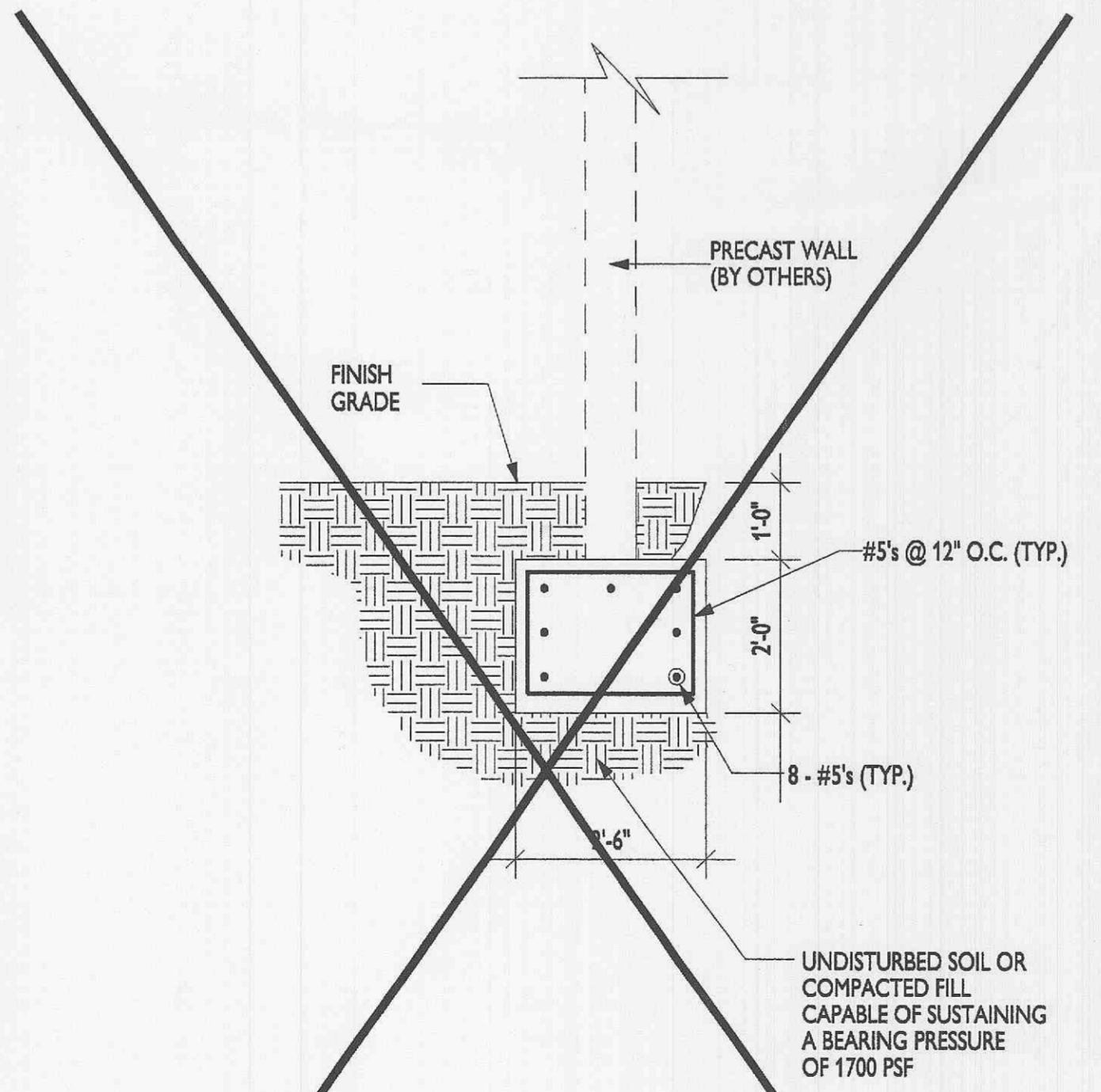
B MONUMENT FOUNDATION PLAN
 SCALE 1/2"=1'-0"



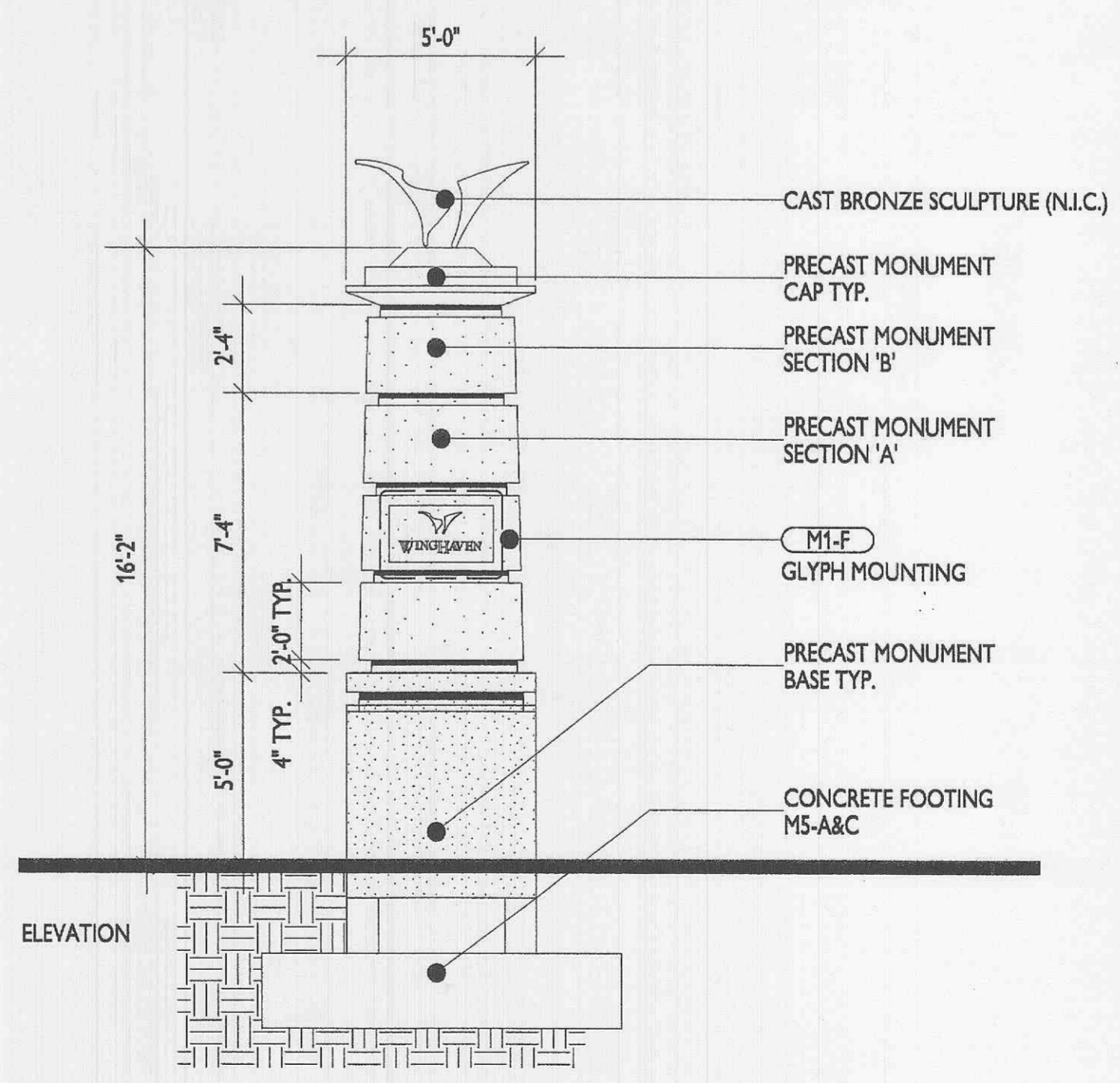
C MONUMENT FOUNDATION SECTION FOR 16' TALL MONUMENT W/ SCULPTURE
 NOT TO SCALE



D MONUMENT FOUNDATION SECTION
 SCALE 1/2"=1'-0"



E MONUMENT WALL FOOTING
 SCALE 1/2"=1'-0"



F 16' TALL MONUMENT W/ SCULPTURE
 SCALE 1/4"=1'-0"

- NOTES:
1. CONCRETE SHALL COMPLY WITH ACI 301-96.
 2. CONCRETE SHALL HAVE A 28-DAY COMPRESSIVE STRENGTH OF 4,000P.S.I.
 3. ALL CONCRETE SHALL BE AIR ENTRAINED PER ACI 301.
 4. REBAR STEEL SHALL BE GRADE 60 (ASTM A615).

* NOTE:
 THESE DETAILS ARE FROM THE WINGHAVEN PUBLIC R.O.W. IMPROVEMENTS PROJECT REVISION 1 ISSUED JAN. 2000 REVISION 2 ISSUED MARCH 2001

Wetland and Boardwalk Project
 WINGHAVEN
 O'Fallon, Missouri

ISSUED:

REVISIONS:

NO	DESCRIPTION	BY	DATE
1	ENTIRE SHEET	CM	04/23/02
2	ENTIRE SHEET	CM	07/24/02
3	ENTIRE SHEET	CM	09/25/02

DRAWN: SAW
 REVIEWED: SAW
 SHEET NUMBER:

L-7

SHEET 7 OF 7

PROJECT NUMBER:
 02-0112-05