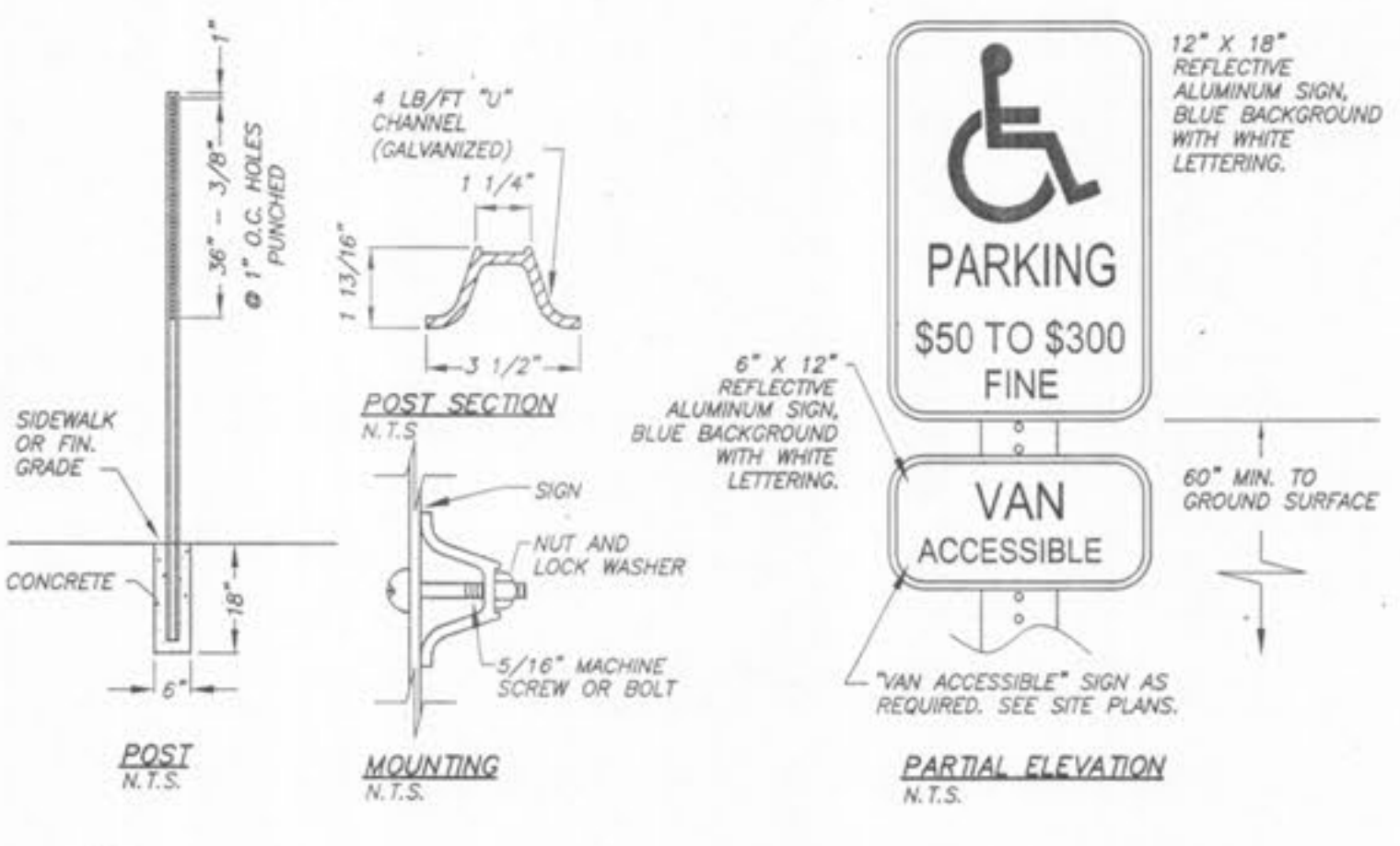


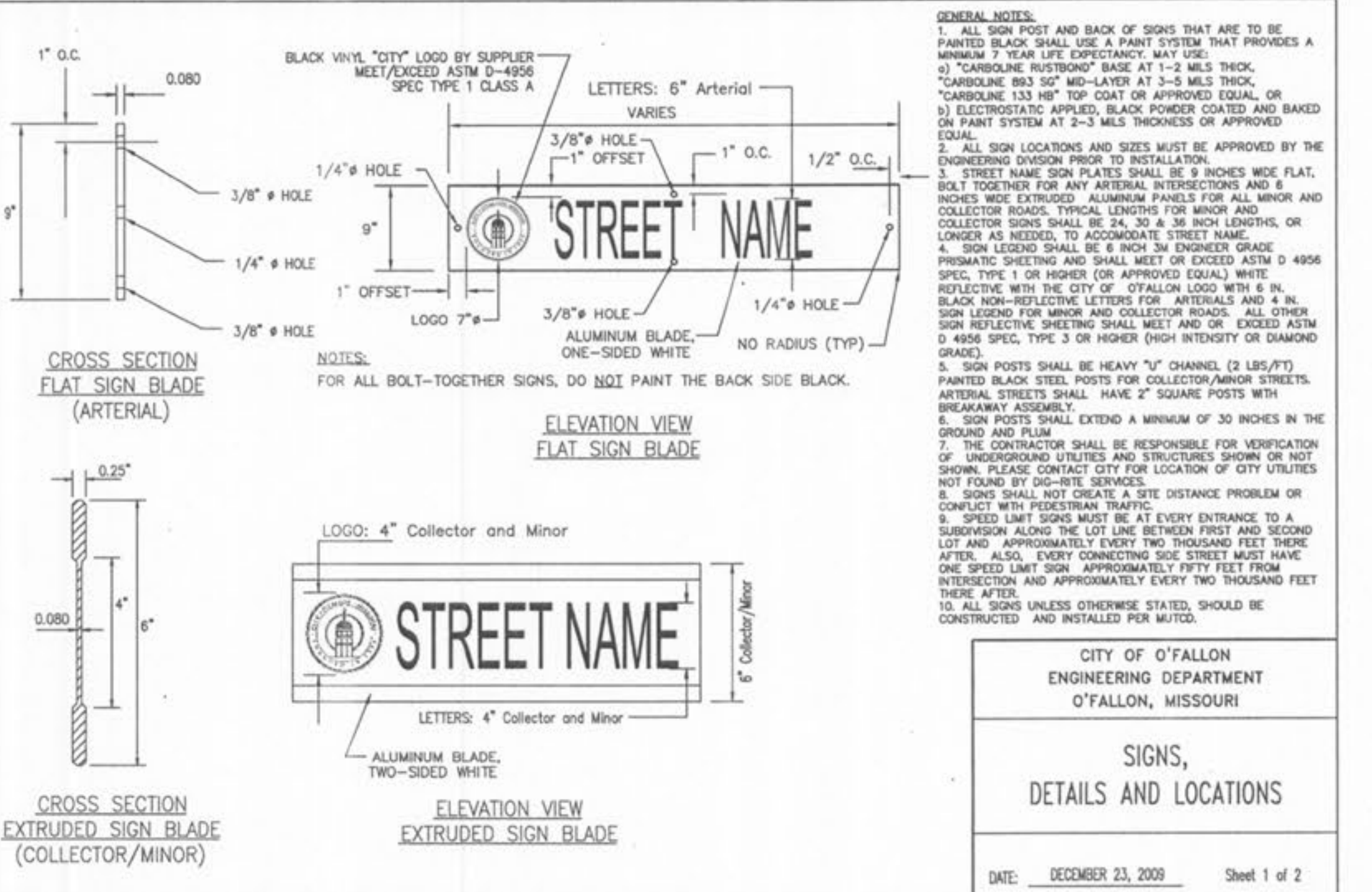
- NOTES:**
1. DETECTABLE WARNINGS SHALL BE RAISED TRUNCATED DOMES PER CURRENT ADA STANDARDS.
  2. DETECTABLE WARNINGS SHALL EXTEND A MINIMUM 24" IN THE DIRECTION OF TRAVEL AND THE FULL WIDTH OF THE RAMP OR LANDING.
  3. DETECTABLE WARNINGS SHALL CONTRAST VISUALLY WITH ADJACENT WALKWAY SURFACES, EITHER LIGHT-ON-DARK OR DARK-ON-LIGHT.
  4. SEE SEPARATE CURB RAMP DETAILS FOR EXACT INSTALLATION LOCATIONS.
  5. DETECTABLE WARNINGS SHALL BE A CAST-IN PLACE SYSTEM MANUFACTURED BY EITHER ADA SOLUTIONS, INC. (BRICK RED COLOR), ARMOR-TILE TACTILE SYSTEMS (COLONIAL RED COLOR), OR APPROVED EQUAL. INSTALL PER MANUFACTURER'S INSTRUCTIONS.

**ACCESSIBLE DETECTABLE WARNINGS FOR CURB RAMPS**  
NOT TO SCALE



- NOTES:**
1. SEE SITE PLAN FOR SIGN LOCATIONS.

**ACCESSIBLE PARKING STALL SIGNAGE**  
NOT TO SCALE

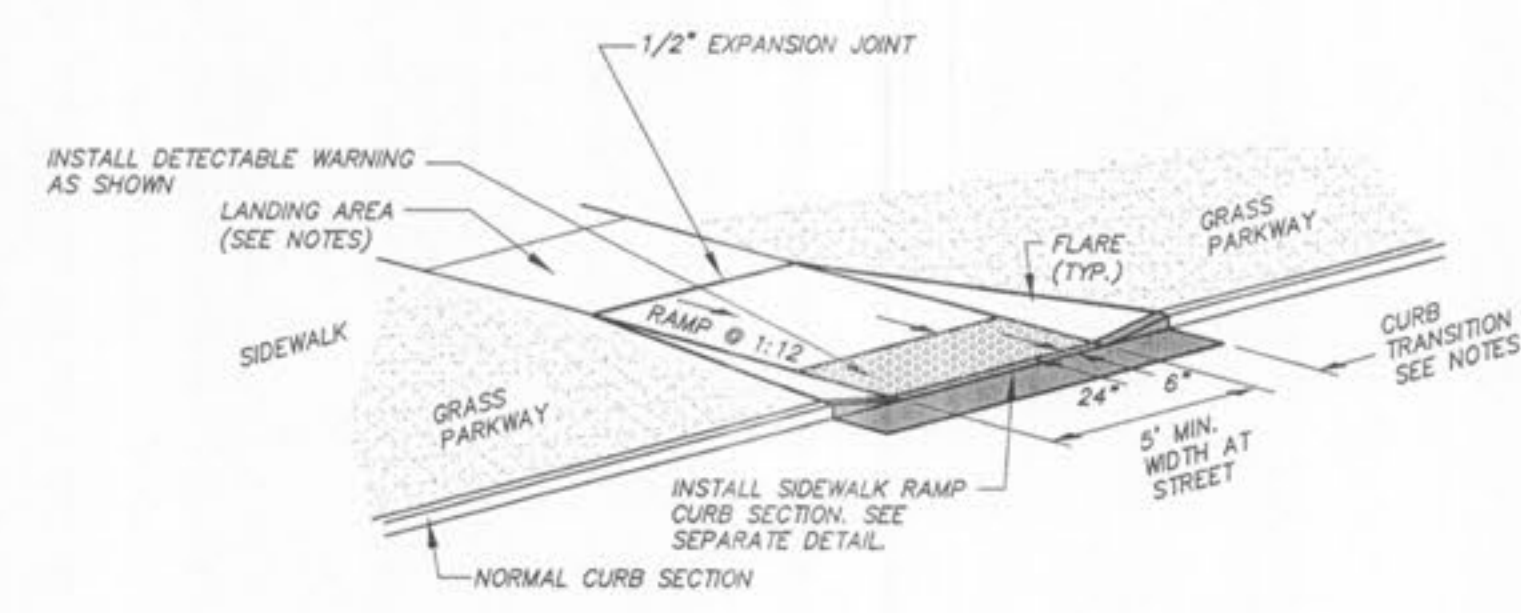


- GENERAL NOTES:**
1. ALL SIGN POST AND BACK OF SIGNS THAT ARE TO BE PAINTED BLACK SHALL USE A PAINT SYSTEM THAT PROVIDES A MINIMUM 7 YEAR LIFE EXPECTANCY. MAY USE:
    - a) "CARBOLINE HISTORIC" BASE AT 1-3 MILS THICK, "CARBOLINE 893 50" MID-LAYER AT 3-5 MILS THICK, "CARBOLINE 133 50" TOP COAT OR APPROVED EQUAL; OR
    - b) ELECTROSTATIC APPLIED, BLACK POWDER COATED AND BAKED ON PAINT SYSTEM AT 2-3 MILS THICKNESS OR APPROVED EQUAL.
  2. ALL SIGN LOCATIONS AND SIZES MUST BE APPROVED BY THE ENGINEERING DIVISION PRIOR TO INSTALLATION.
  3. STREET NAME SIGN PLATES SHALL BE 9 INCHES WIDE FLAT. BOLT TOGETHER FOR ANY ARTERIAL INTERSECTIONS AND 8 INCHES WIDE EXTENDED ALUMINUM PANELS FOR ALL MINOR AND COLLECTOR ROADS. TYPICAL LENGTHS FOR MINOR AND COLLECTOR SIGNS SHALL BE 24, 30 & 36 HIGH LENGTHS, OR LONGER AS NEEDED, TO ACCOMMODATE STREET NAME.
  4. SIGN LEGEND SHALL BE 6 INCH 3/8 INCHES GRADE PRISMATIC SHEETING AND SHALL MEET OR EXCEED ASTM D 4956 SPEC. TYPE 1 OR HIGHER (OR APPROVED EQUAL) WHITE REFLECTIVE WITH THE CITY OF OTTALON LOGO WITH 6 IN. BLACK NON-REFLECTIVE LETTERS FOR ARTERIALS AND 4 IN. SIGN LEGEND FOR MINOR AND COLLECTOR ROADS. ALL OTHER SIGN REFLECTIVE SHEETING SHALL MEET AND OR EXCEED ASTM D 4956 SPEC. TYPE 3 OR HIGHER (HIGH INTENSITY OR DIAMOND GRADE).
  5. SIGN POSTS SHALL BE HEAVY "V" CHANNEL (2 LBS/FT) PAINTED BLACK STEEL POSTS FOR COLLECTOR/MINOR STREETS. ARTERIAL STREETS SHALL HAVE 2" SQUARE POSTS WITH BREAKAWAY ASSEMBLY.
  6. SIGN POSTS SHALL EXTEND A MINIMUM OF 30 INCHES IN THE GROUND AND FLUM.
  7. THE CONTRACTOR SHALL BE RESPONSIBLE FOR VERIFICATION OF UNDERGROUND UTILITIES AND STRUCTURES SHOWN OR NOT SHOWN. PLEASE CONTACT CITY FOR LOCATION OF CITY UTILITIES NOT FOUND BY DIG-BITE SERVICES.
  8. SIGNS SHALL NOT OBTAIN A SITE DISTANCE PROBLEM OR CONFLICT WITH PEDESTRIAN TRAFFIC.
  9. "SPEED LIMIT" SIGNS MUST BE 1000 FEET FROM INTERSECTION AND APPROXIMATELY 1000 FEET FROM INTERSECTION. ALSO, EVERY CONNECTING SIDE STREET MUST HAVE ONE SPEED LIMIT SIGN APPROXIMATELY 1000 FEET FROM INTERSECTION AND APPROXIMATELY EVERY TWO THOUSAND FEET THEREAFTER.
  10. ALL SIGNS UNLESS OTHERWISE STATED, SHOULD BE CONSTRUCTED AND INSTALLED PER MUTCD.

CITY OF OTTALON  
ENGINEERING DEPARTMENT  
OTTALON, MISSOURI

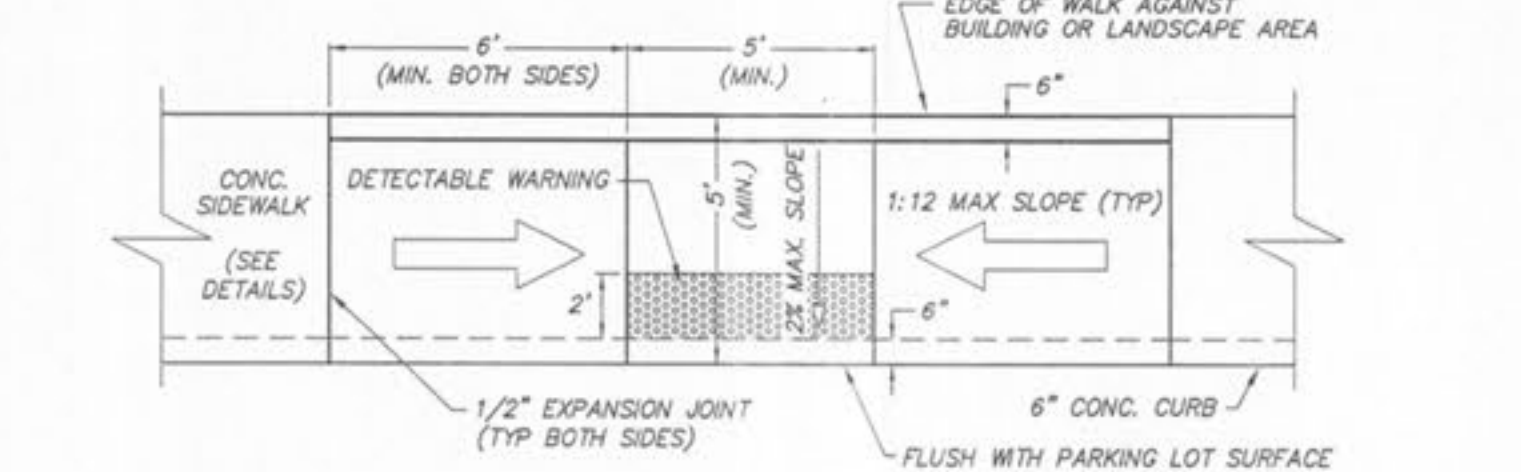
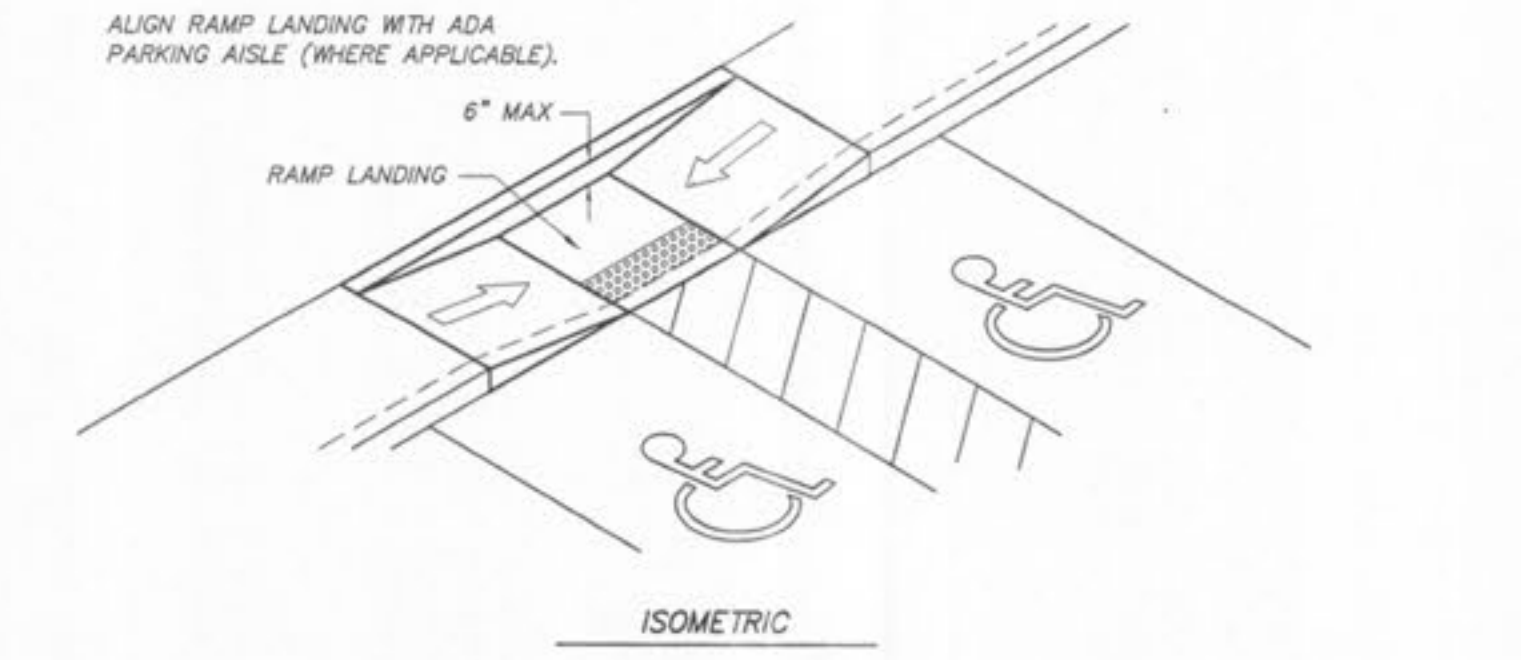
**SIGNS,  
DETAILS AND LOCATIONS**

DATE: DECEMBER 23, 2009 Sheet 1 of 2



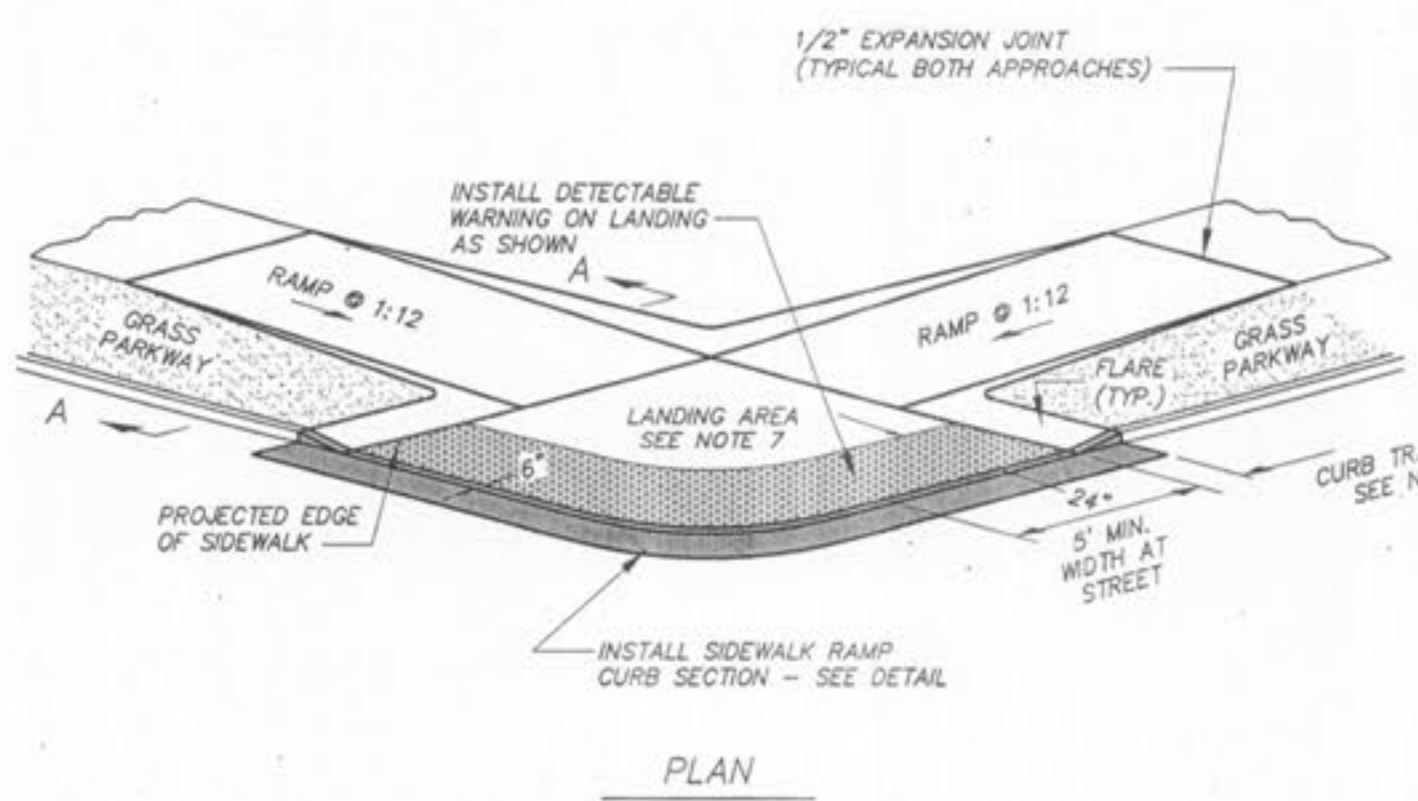
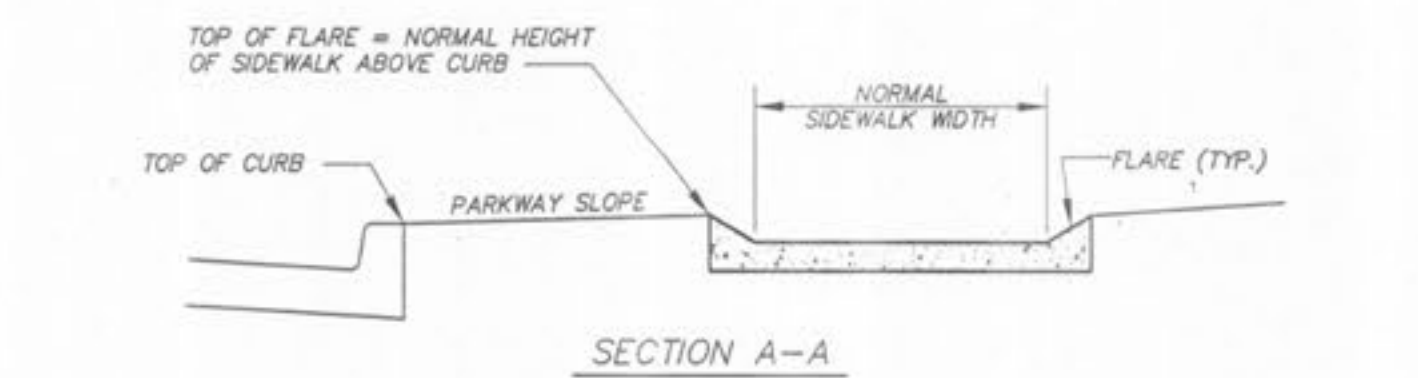
- NOTES:**
1. RAMP SHALL BE 4" THICK 4,000 PSI @ 28 DAYS CONCRETE.
  2. EXPANSION JOINT SHALL BE 1/2" PREFORMED CORK OR BITUMINOUS EXPANSION JOINT MATERIAL.
  3. ALL SLOPES ARE MEASURED FROM THE HORIZONTAL.
  4. REPLACE STANDARD CURB SECTION WITH SIDEWALK RAMP CURB SECTION - SEE SEPARATE DETAIL.
  5. RAMP LENGTH IS DEPENDENT ON 1:12 MAX SLOPE. USE FLATTER WHEN POSSIBLE.
  6. LANDING AREA SHALL BE 5'-0" MIN WIDTH. CROSS SLOPE OF LANDING SHALL NOT EXCEED 1/4" PER FT.
  7. TYPE "A" RAMP NOT APPLICABLE IF PARKWAY WIDTH DOES NOT PROVIDE ENOUGH LENGTH FOR PERPENDICULAR RAMP AT 1:12 SLOPE.
  8. FLARES ARE REQUIRED AT RAMPS TO KEEP GRASS PARKWAY SLOPES IN CONFORMANCE WITH THE TYPICAL CROSS SECTION.
  9. CURB TRANSITION LENGTH IS DEPENDENT ON FLARE SLOPE.
  10. MAXIMUM RAMP CROSS SLOPE IS 1/4" PER FT IN ALL DIRECTIONS.
  11. SEE SEPARATE DETAIL FOR MORE INFORMATION ON DETECTABLE WARNINGS.

**PERPENDICULAR CURB RAMP**  
NOT TO SCALE



- NOTES:**
1. RAMP SHALL BE 4" THICK PORTLAND CEMENT CONCRETE 4,000 PSI @ 28 DAYS CONCRETE.
  2. EXPANSION JOINT SHALL BE 1/2" PREFORMED CORK OR BITUMINOUS EXPANSION JOINT MATERIAL.
  3. MAXIMUM RAMP CROSS SLOPE IS 1/4" PER FOOT.
  4. MAXIMUM RAMP LONGITUDINAL SLOPE IS 1:12, WITH A MAXIMUM RISE OF 6". USE A FLATTER RAMP SLOPE WHEN POSSIBLE.
  5. RAMP LANDING SLOPE SHALL NOT EXCEED 1/4" PER FOOT IN ALL DIRECTIONS.
  6. SEE SEPARATE DETAIL FOR MORE INFORMATION ON DETECTABLE WARNINGS.

**PARALLEL CURB RAMP**  
NOT TO SCALE



- NOTES:**
1. RAMP SHALL BE 4" THICK 4,000 PSI @ 28 DAYS CONCRETE.
  2. EXPANSION JOINT SHALL BE 1/2" PREFORMED CORK OR BITUMINOUS EXPANSION JOINT MATERIAL.
  3. MAXIMUM RAMP CROSS SLOPE IS 1/4" PER FT.
  4. ALL SLOPES ARE MEASURED FROM THE HORIZONTAL.
  5. REPLACE STANDARD CURB SECTION WITH SIDEWALK RAMP CURB SECTION - SEE DETAIL.
  6. RAMP 1:12 MAX. USE FLATTER WHEN POSSIBLE.
  7. LANDING AREA SHALL BE 4'-0" MIN WIDTH. CROSS SLOPE OF LANDING SHALL NOT EXCEED 1/4" PER FT.
  8. FLARES ARE REQUIRED AT RAMPS TO KEEP GRASS PARKWAY SLOPES IN CONFORMANCE WITH THE TYPICAL CROSS SECTION (SEE SECTION A-A).
  9. CURB TRANSITION LENGTH IS DEPENDENT ON FLARE SLOPE.
  10. SEE SEPARATE DETAIL FOR MORE INFORMATION ON DETECTABLE WARNINGS.

**CURB RAMP AT CORNER WITH GRASS PARKWAY**  
NOT TO SCALE



**W11-2 "PEDESTRIAN CROSSING" SIGN**  
NOT TO SCALE



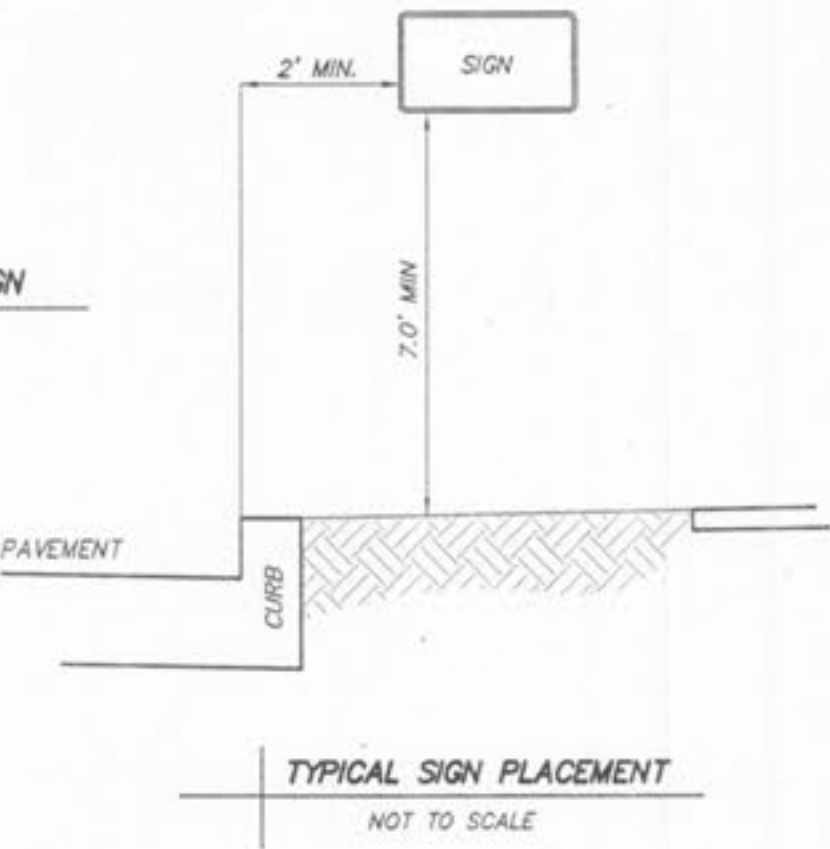
**R1-1 "STOP" SIGN**  
NO SCALE



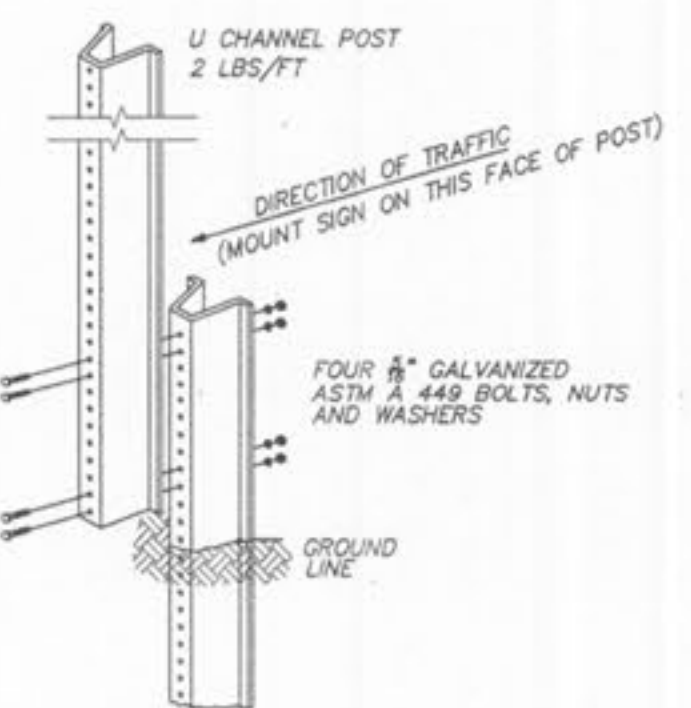
**W16-9p "AHEAD" SIGN**  
NOT TO SCALE



**R2-1 "SPEED LIMIT 15" SIGN**  
NOT TO SCALE

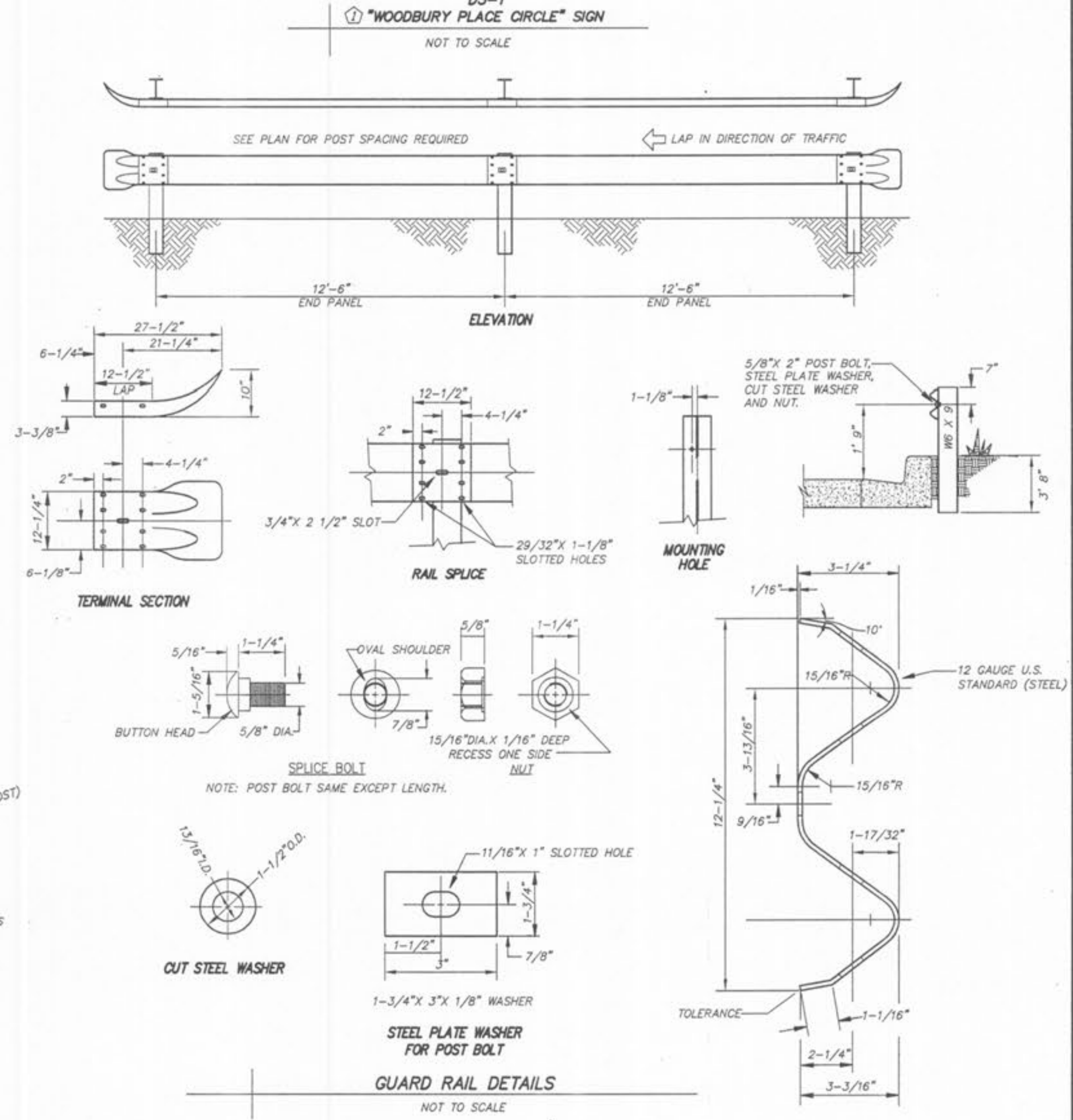


**TYPICAL SIGN PLACEMENT**  
NOT TO SCALE



- NOTES:**
1. STUB HEIGHT AND SPLICE LAP SHALL BE 16" TO 18".
  2. SPLICE SHALL NOT EXTEND BELOW THE GROUND.
  3. ONLY ONE SPLICE WILL BE ALLOWED PER POST.
  4. USE OF SPLICE IS OPTIONAL.
  5. ALL POSTS SHALL BE EMBEDDED A MINIMUM OF 3 FEET.
  6. SIGNS SHALL BE 7" MIN FROM FINISH GRADE TO BOTTOM OF LOWEST MOUNTED SIGN.

**SIGN POST DETAIL**  
NOT TO SCALE



- NOTES:**
1. REVISED STREET NAME SIGN DETAIL.
  2. ADDED SPEED LIMIT SIGN.

**GUARD RAIL DETAILS**  
NOT TO SCALE

PLANNING & DEVELOPMENT #1804.08 APPROVED AUGUST 6, 2009

**SITE DETAILS**

**WOODBURY PLACE**  
ST. CHARLES COUNTY, OTTALON, MISSOURI

Surveyed: 1/19/10

Drawn: CH

Checked: TOC/MK

Scale: AS SHOWN

Date: DECEMBER 7, 2009

Job: 1134

Sheet: C117

Revised: 19 JAN 2010

Engineering Surveys & Services  
1113 Fay Street  
Columbia, Missouri  
573-449-2646  
Missouri Engineering Corporation # 2004005018