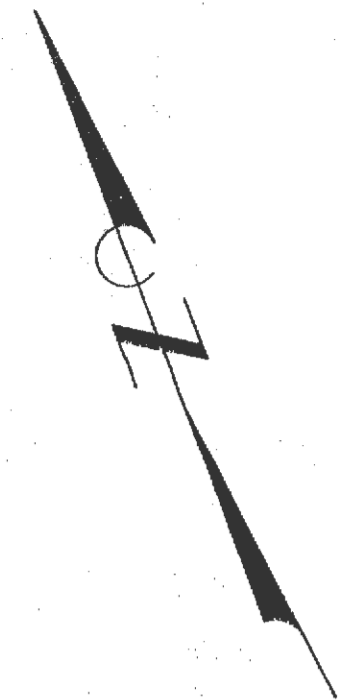
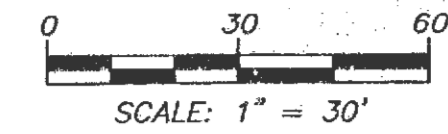


WOODBURY PLACE - PHASE II

O'FALLON, ST. CHARLES COUNTY, MISSOURI

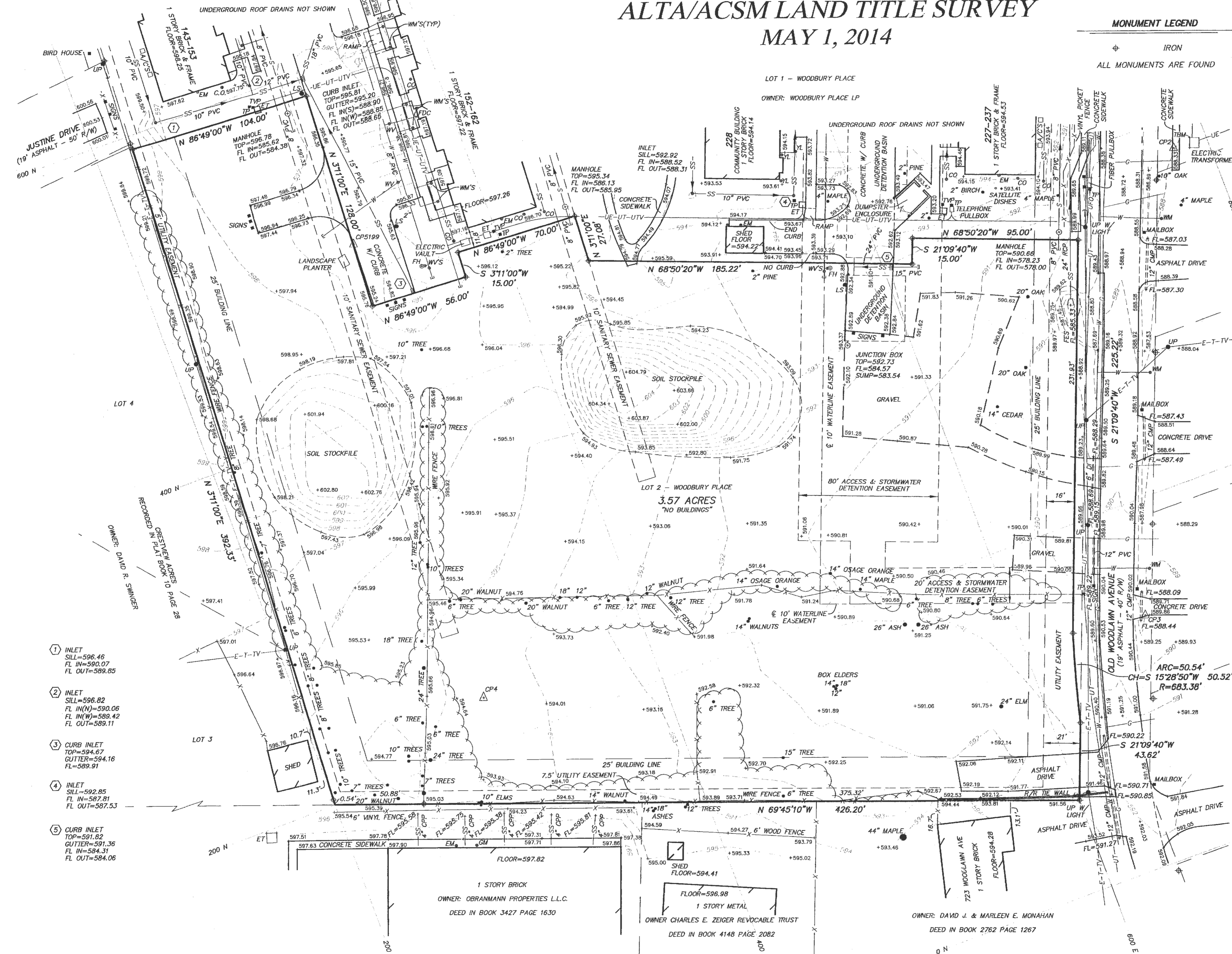
ALTA/ACSM LAND TITLE SURVEY

MAY 1, 2014



BEARINGS ARE REFERENCED TO THE LINES OF WOODBURY PLACE RECORDED IN PLAT BOOK 46 PAGE 246

NOTE: BUILDING LINES AND EASEMENTS ARE PER THE PLAT OF WOODBURY PLACE RECORDED IN PLAT BOOK 46 PAGE 246.



- ① INLET
SILL=596.46
FL IN=590.07
FL OUT=589.85
- ② INLET
SILL=596.82
FL IN(N)=590.06
FL IN(W)=589.42
FL OUT=589.11
- ③ CURB INLET
TOP=594.67
GUTTER=594.16
FL=589.91
- ④ INLET
SILL=592.85
FL IN=587.81
FL OUT=587.53
- ⑤ CURB INLET
TOP=591.82
GUTTER=591.36
FL IN=594.31
FL OUT=584.06

MONUMENT LEGEND

⊕ IRON
ALL MONUMENTS ARE FOUND

SURVEY CONTROL POINTS

POINT #	NORTH	EAST	ELEVATION	DESCRIPTION
CP2	382.75	780.36	588.45	DRILL HOLE
CP3	137.06	671.80	589.87	DRILL HOLE
CP4	226.48	300.59	594.35	IRON
CP5199	495.43	321.04	596.16	DRILL HOLE

BENCH MARK

BM - CHISELED MARKS ON THE EAST RIM OF A MANHOLE LOCATED 65 FEET NORTH OF THE NORTH EDGE OF PAVEMENT OF JUSTINE DRIVE AND 20 FEET EAST OF THE EAST EDGE OF PAVEMENT OF OLD WOODLAWN AVENUE AS SHOWN BY A SURVEY BY VOLZ INCORPORATED DATED SEPTEMBER 2005.
ELEVATION = 582.25

TBM - CHISELED MARKS ON THE EAST RIM OF A MANHOLE LOCATED 6.3 FEET SOUTH OF THE SOUTH EDGE OF PAVEMENT OF JUSTINE DRIVE AND 6 FEET WEST OF THE EAST EDGE OF PAVEMENT OF CRESTVIEW DRIVE.
ELEVATION = 601.93

TBM - CHISELED SQUARE ON THE NORTHWEST CORNER OF AN ELECTRIC TRANSFORMER PAD LOCATED 43 FEET NORTHWEST OF THE NORTHWEST BUILDING CORNER OF 714 OLD WOODLAWN AVENUE.
ELEVATION = 588.72

LEGEND

—E—	ELECTRIC LINE
—T—	TELEVISION LINE
—UE—	UNDERGROUND ELECTRIC LINE
—UT—	UNDERGROUND TELEPHONE LINE
—UFO—	UNDERGROUND FIBER OPTIC LINE
—UTV—	UNDERGROUND TELEVISION LINE
—S—	SANITARY SEWER LINE
—SS—	STORM SEWER LINE
—G—	GAS LINE
—W—	WATER LINE
—X—	FENCE
—	TREE & BRUSH LINE
—	EXISTING CONTOUR
—	ANCHOR
△ CP#	CONTROL POINT
A/C	AIR CONDITIONER
CMP	CORRUGATED METAL PIPE
CO	CLEANOUT
DI	DUCTILE IRON PIPE
EM	ELECTRIC METER
ET	ELECTRIC TRANSFORMER
FES	FLARED END SECTION
FH	FIRE HYDRANT
FL	FLOW LINE
GM	GAS METER
GV	GAS VALVE
HOPE	HIGH DENSITY POLYETHYLENE PIPE
PVC	POLYVINYL CHLORIDE PIPE
RCP	REINFORCED CONCRETE PIPE
TP	TELEPHONE PEDESTAL
TVP	TELEVISION PEDESTAL
UP	UTILITY POLE
URD	UNDERGROUND ROOF DRAIN
WM	WATER METER
WV	WATER VALVE
YL	YARD LIGHT

BY: ENGINEERING SURVEYS AND SERVICES
MISSOURI L.S. CORP. #2004004672
1113 FAY STREET
COLUMBIA, MO 65201
PHONE: (573) 449-2646
EMAIL: FCARR@ESS-INC.COM

FREDERICK E. CARR, III
PROFESSIONAL LAND SURVEYOR
PLS - 2008016655

