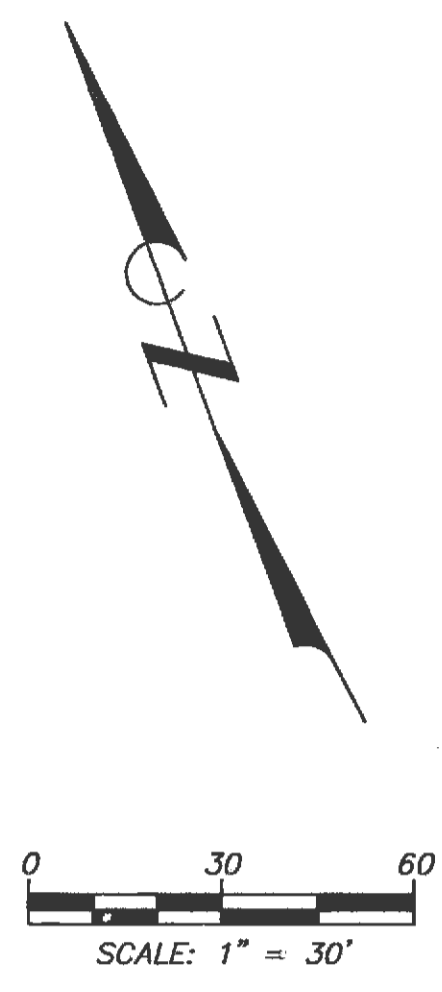
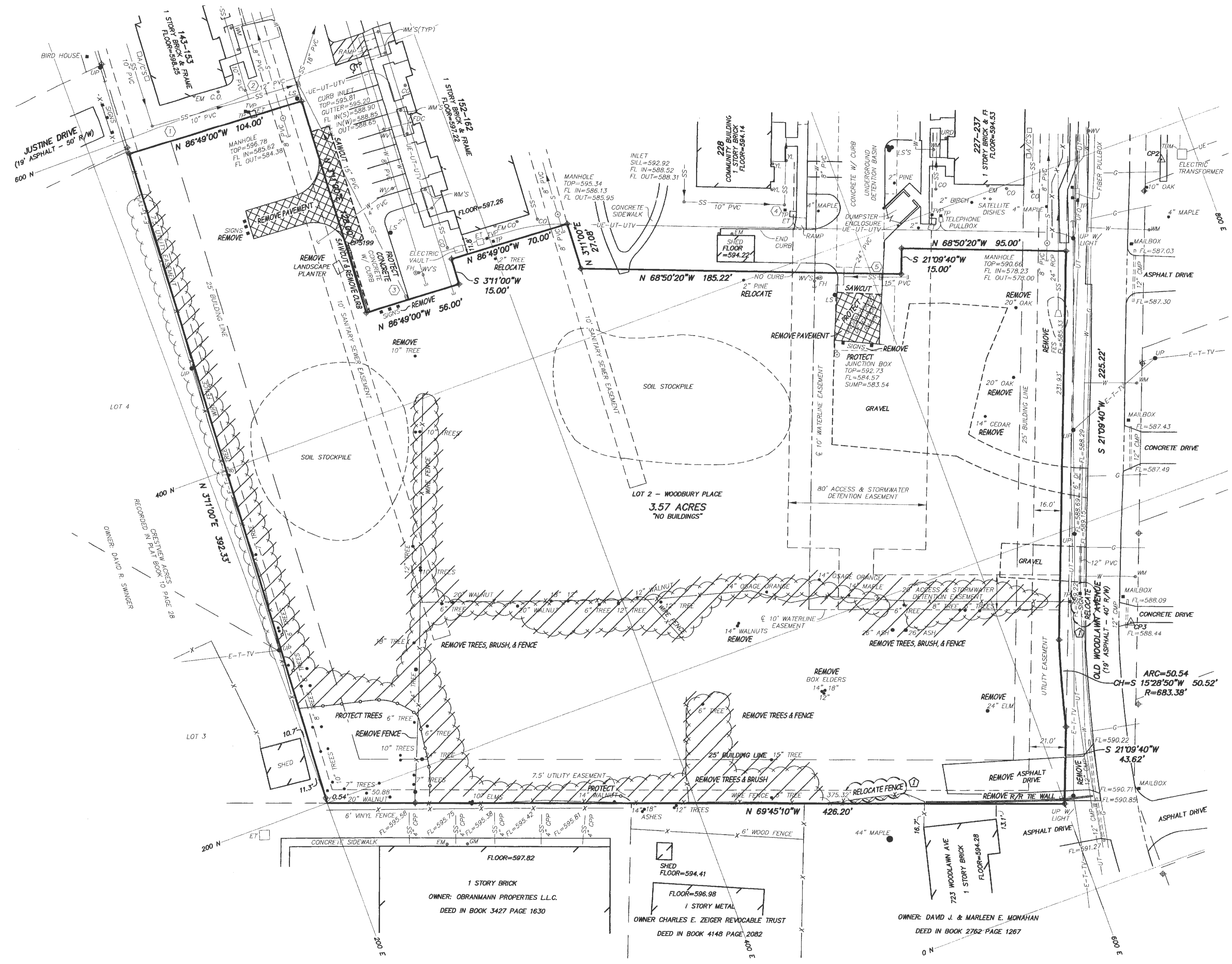


E:\CUREV\1024\WINGS\LES\S126601\12660\_5\TEK\AN.DWG 7/16/2014

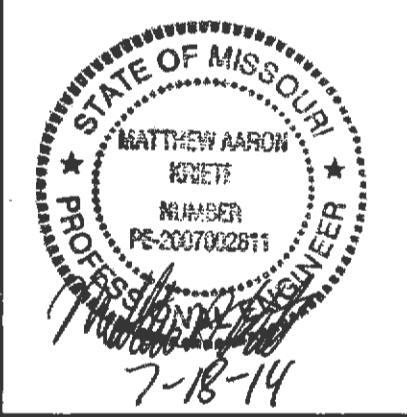


- ① INLET  
SILL=596.46  
FL IN=590.07  
FL OUT=589.85
- ② INLET  
SILL=596.82  
FL IN(N)=590.06  
FL IN(W)=589.42  
FL OUT=589.11
- ③ CURB INLET  
TOP=594.67  
GUTTER=594.16  
FL=589.91
- ④ INLET  
SILL=592.85  
FL IN=587.81  
FL OUT=587.53
- ⑤ CURB INLET  
TOP=591.82  
GUTTER=591.36  
FL IN=584.31  
FL OUT=584.06



**Engineering Surveys and Services**  
 Consulting Engineers, Scientists, and Land Surveyors  
 Analytical and Material Laboratories  
 1113 Ivy Street, Columbia, Missouri 65201  
 573-449-2666 - www.ESS-Missouri.com  
 Other Offices:  
 Jefferson City, Missouri - Sedalia, Missouri  
 Missouri Engineering Corporation # 2004000918

**WOODBURY PLACE II**  
 721 WOODLAWN AVENUE  
 O'FALLON, ST. CHARLES COUNTY, MISSOURI



MATTHEW A. KRIETE  
 PROFESSIONAL ENGINEER  
 PE-2007002811

Date  
**MAY 23, 2014**

Revised  
 JULY 18, 2014

Design: TOC Drawn: BR

**DEMOLITION PLAN**

Sheet  
**C1.01**

ES&S PROJECT NO. 12660