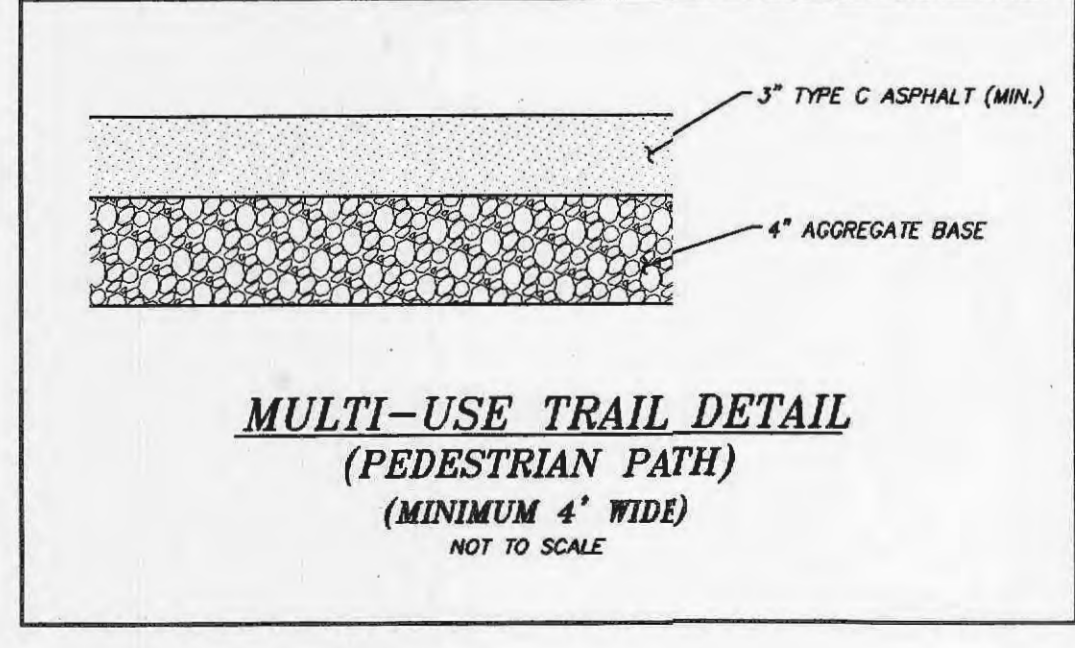
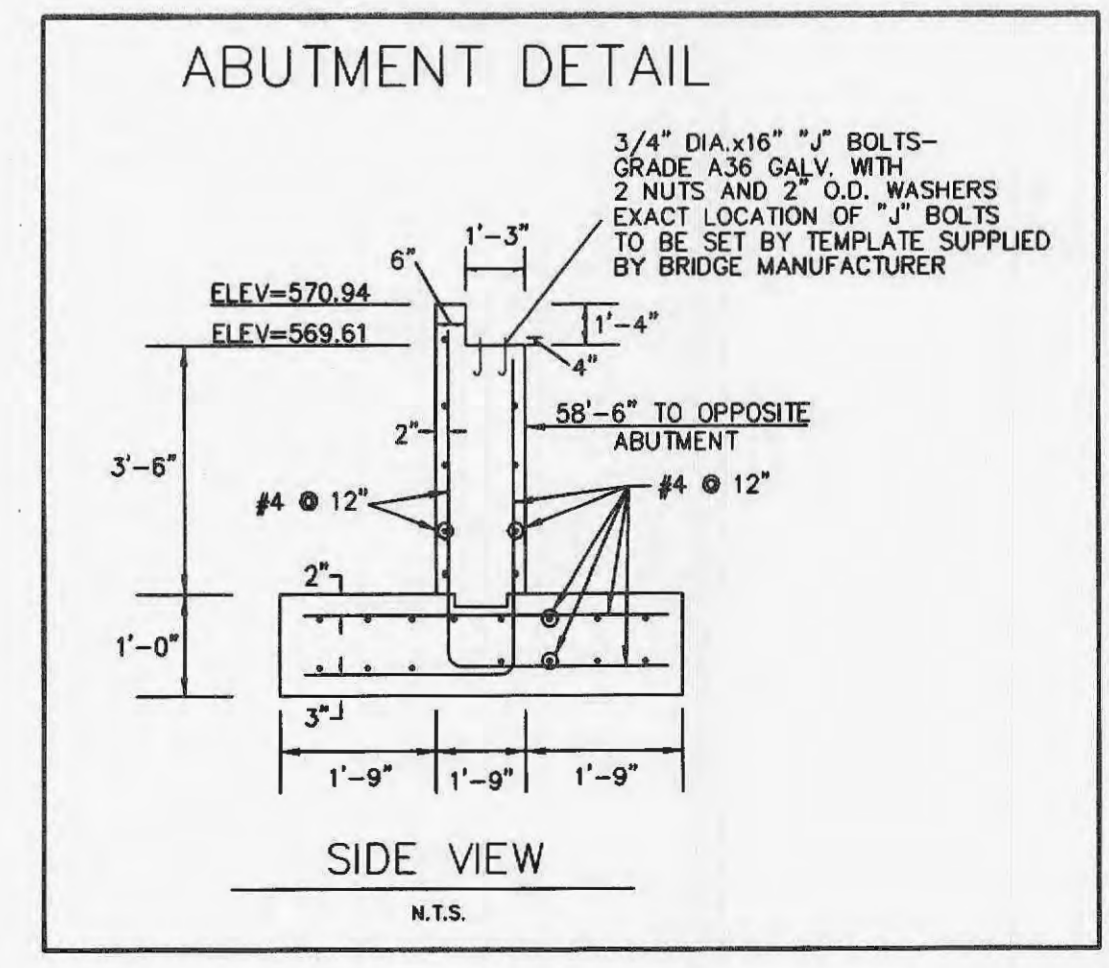
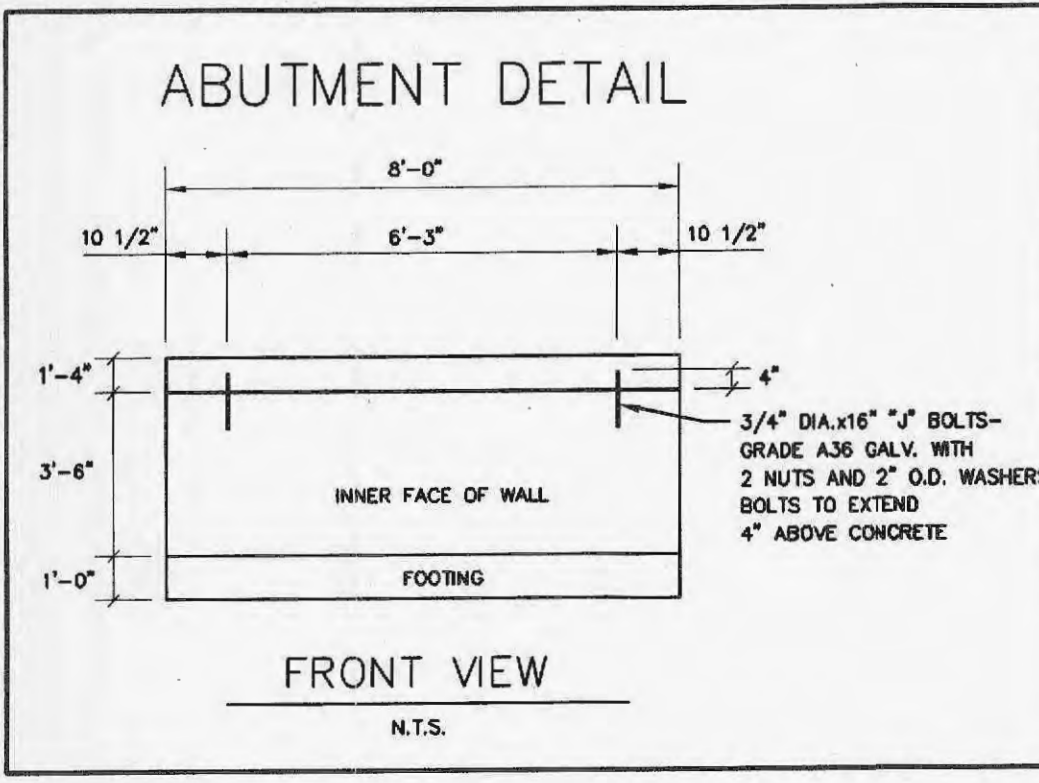
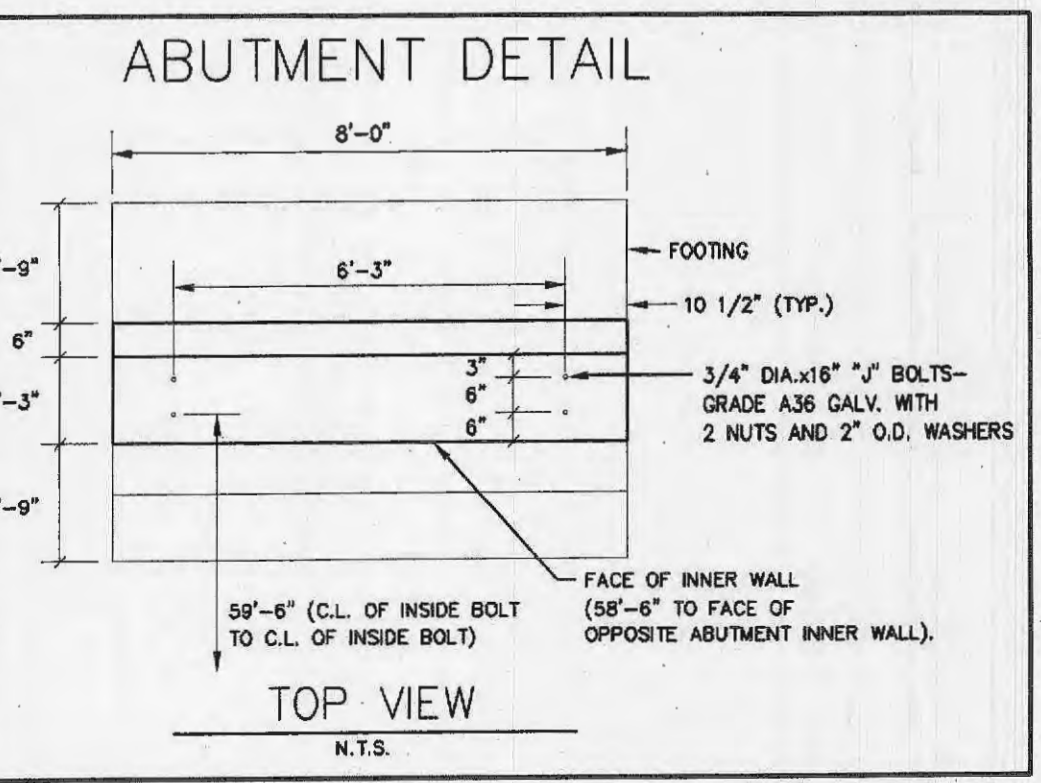
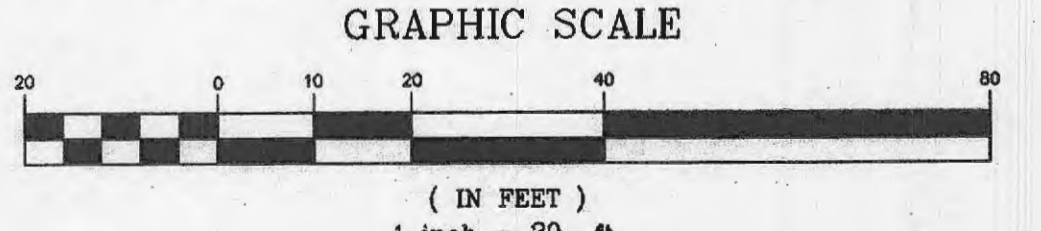


FOOT BRIDGE NOTE:
 SEE FOOT BRIDGE PLANS BY OTHERS AND
 ABUTMENT STRUCTURAL CALCULATIONS

NOTE: THE COLOR OF THE BRIDGE PAINT
 IS TO BE "CONSERVATION" BROWN

RECEIVED
 FEB 15 2006
 ENGINEERING DEPARTMENT



LANDSCAPE NOTE:
 ALL PROPOSED LANDSCAPING SHOWN IS TO
 CONFORM TO CITY OF FALLON ORDINANCES.
 SEE LANDSCAPING NOTES ON COVER SHEET.

UTILITY NOTE:
 UNDERGROUND FACILITY STRUCTURES AND UTILITIES HAVE BEEN
 PLOTTED FROM AVAILABLE SURVEYS AND RECORDED INFORMATION AND,
 THEREFORE, THEIR LOCATIONS MUST BE CONSIDERED APPROXIMATE ONLY.
 VERIFICATION OF LOCATION OF ALL UNDERGROUND STRUCTURES AND
 FACILITIES EITHER SHOWN OR NOT SHOWN ON THESE PLANS, SHALL BE
 THE RESPONSIBILITY OF THE CONTRACTOR.

PICKETT RAY & SILVER
 CIVIL ENGINEERS
 PLANNERS
 LAND SURVEYORS
 333 Mid Rivers Mall Drive
 St. Peters, MO 65376
 Phone (636) 397-1211
 Fax (636) 397-1104

**WYNDGATE
 FOOT BRIDGE & PEDESTRIAN TRAIL
 SITE PLAN**
 Prepared For:
 SUMMIT POINTE, L.C.

REVISIONS NO.	DATE	DESCRIPTION
1.	2/14/06	Note color per City comments on Amendments dated 2/10/06.

ENGINEERS AUTHENTICATION
 The responsibility for professional engineering liability on this project is hereby limited to the set of plans authenticated by the seal, signature, and date hereunder attached. Responsibility is disclaimed for all other engineering plans involved in this project and specifically excludes revisions after this date unless reauthenticated.

PICKETT, RAY & SILVER, INC.
 HAROLD J. BARACH
 LICENSE NUMBER E-47751
 PROFESSIONAL ENGINEER
 2/14/06
 File Copy
 APPROVED
 ASL

DRAWN	NSG	DATE	01/03/06
CHECKED	DWD	DATE	01/03/06
PROJECT #	01267-SUP0.02R		
TASK #	013	FIELD	838
		BOOK	

WYNDGATE
 FOOT BRIDGE &
 PEDESTRIAN TRAIL
 SITE PLAN
 SHEET 1 OF 1
 © Copyright 2006 by Pickett, Ray & Silver, Inc.

2006