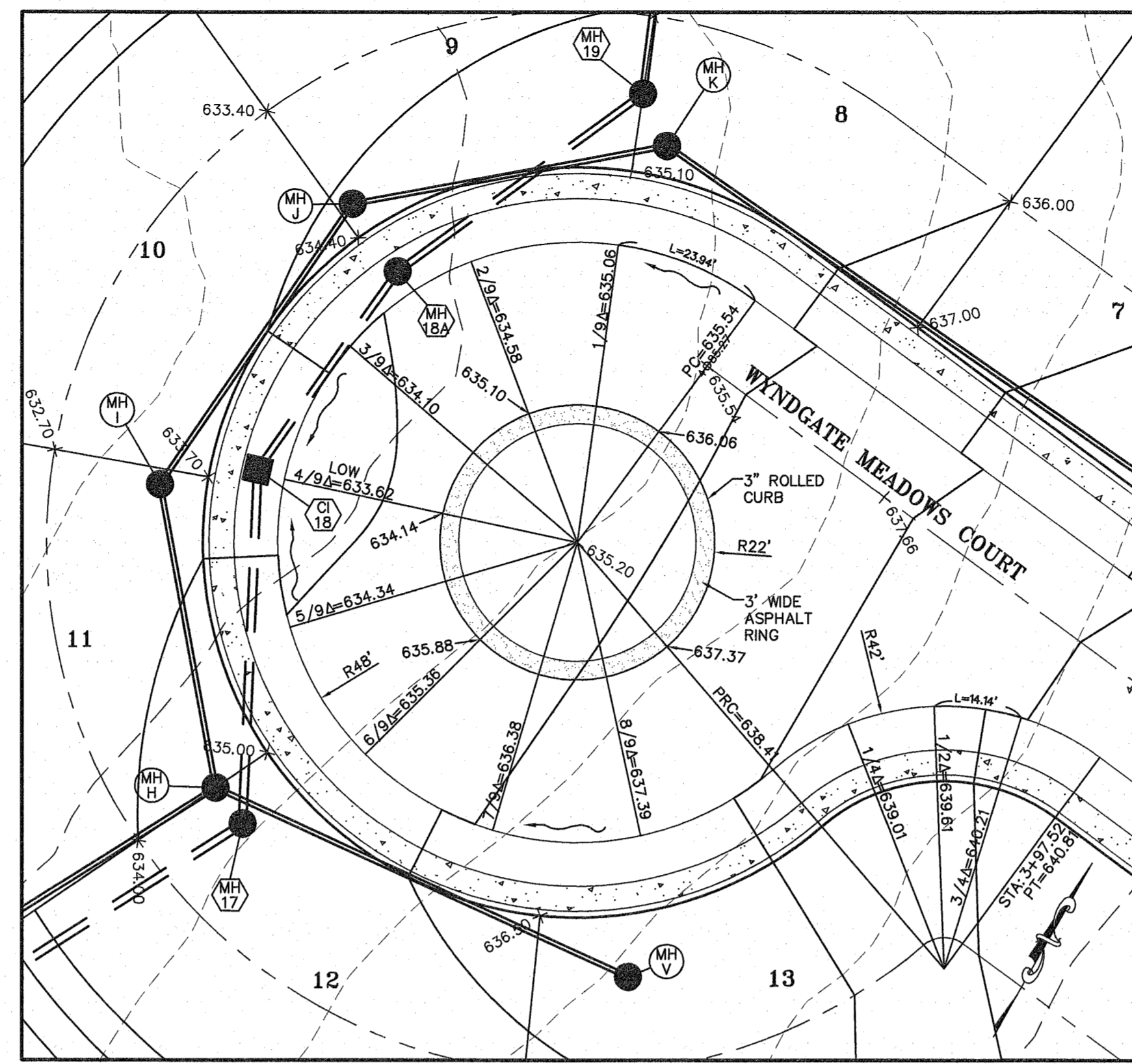


WARPING DETAIL

SCALE: 1" = 20'

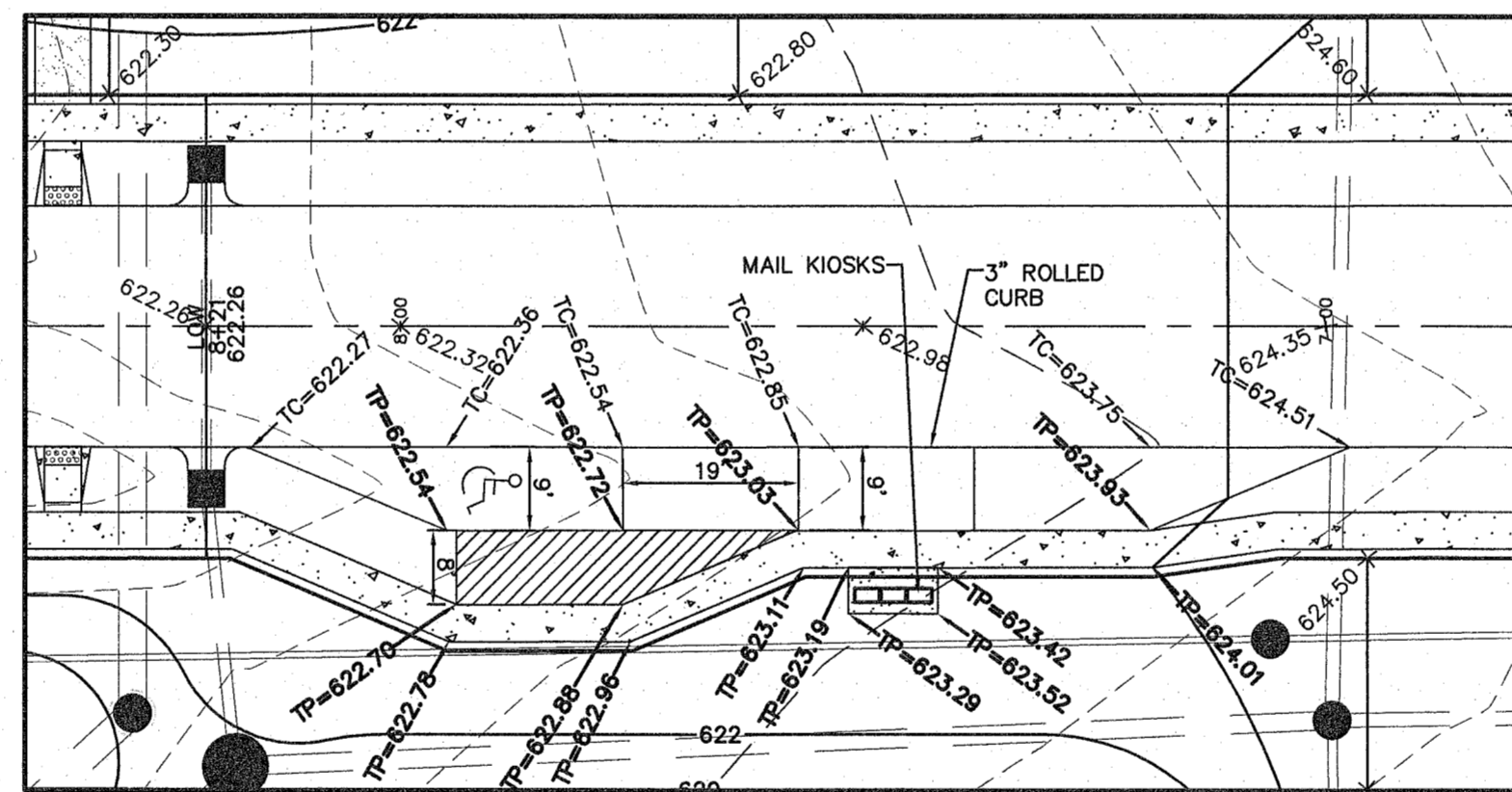
NOTE:
ALL ELEVATIONS ARE TO TOP OF CURB UNLESS OTHERWISE NOTED.
TP=TOP OF PAVEMENT



WARPING DETAIL

SCALE: 1" = 20'

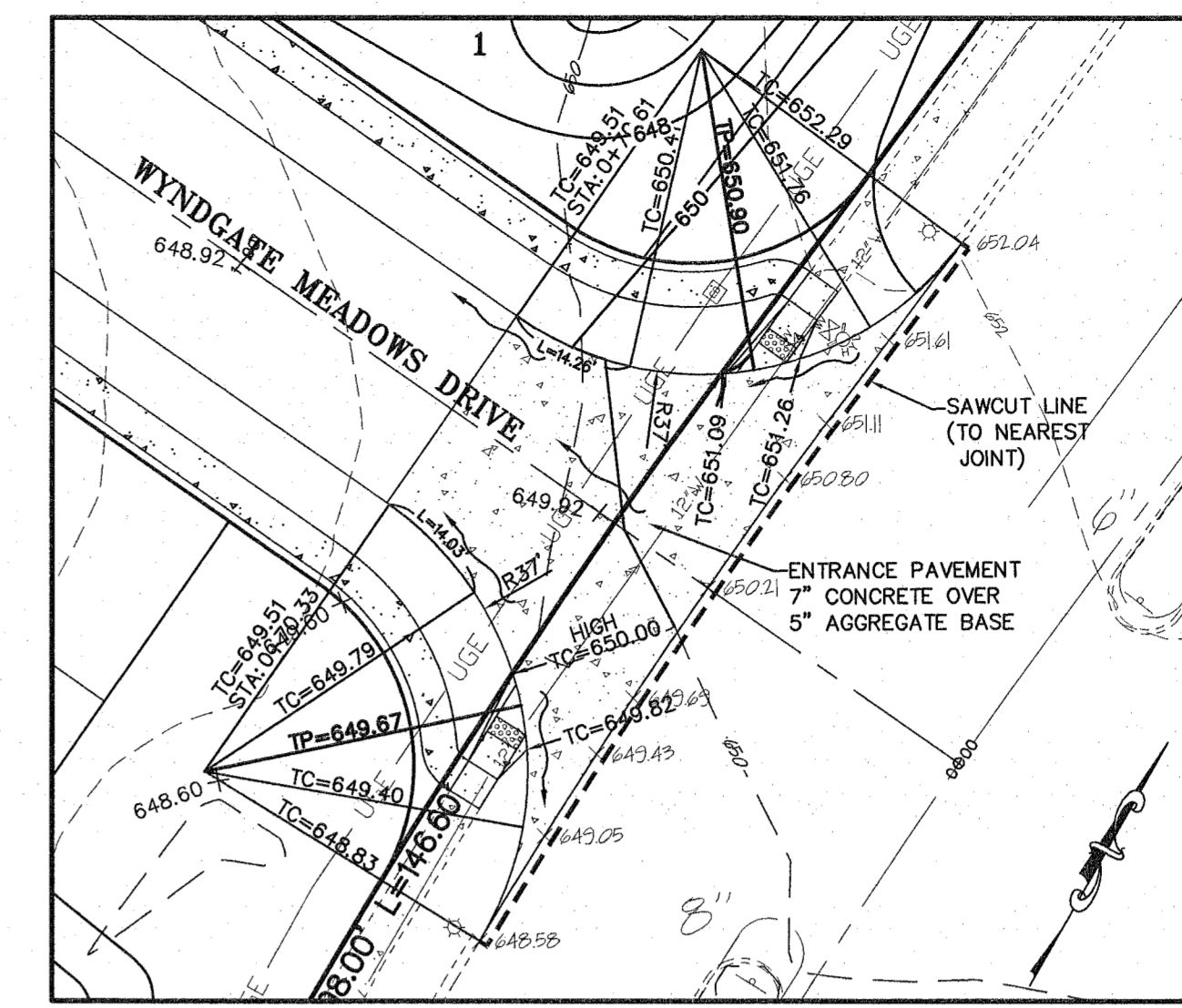
NOTE:
ALL ELEVATIONS ARE TO TOP OF CURB UNLESS OTHERWISE NOTED.
TP=TOP OF PAVEMENT



PARALLEL PARKING DETAIL

SCALE: 1" = 20'

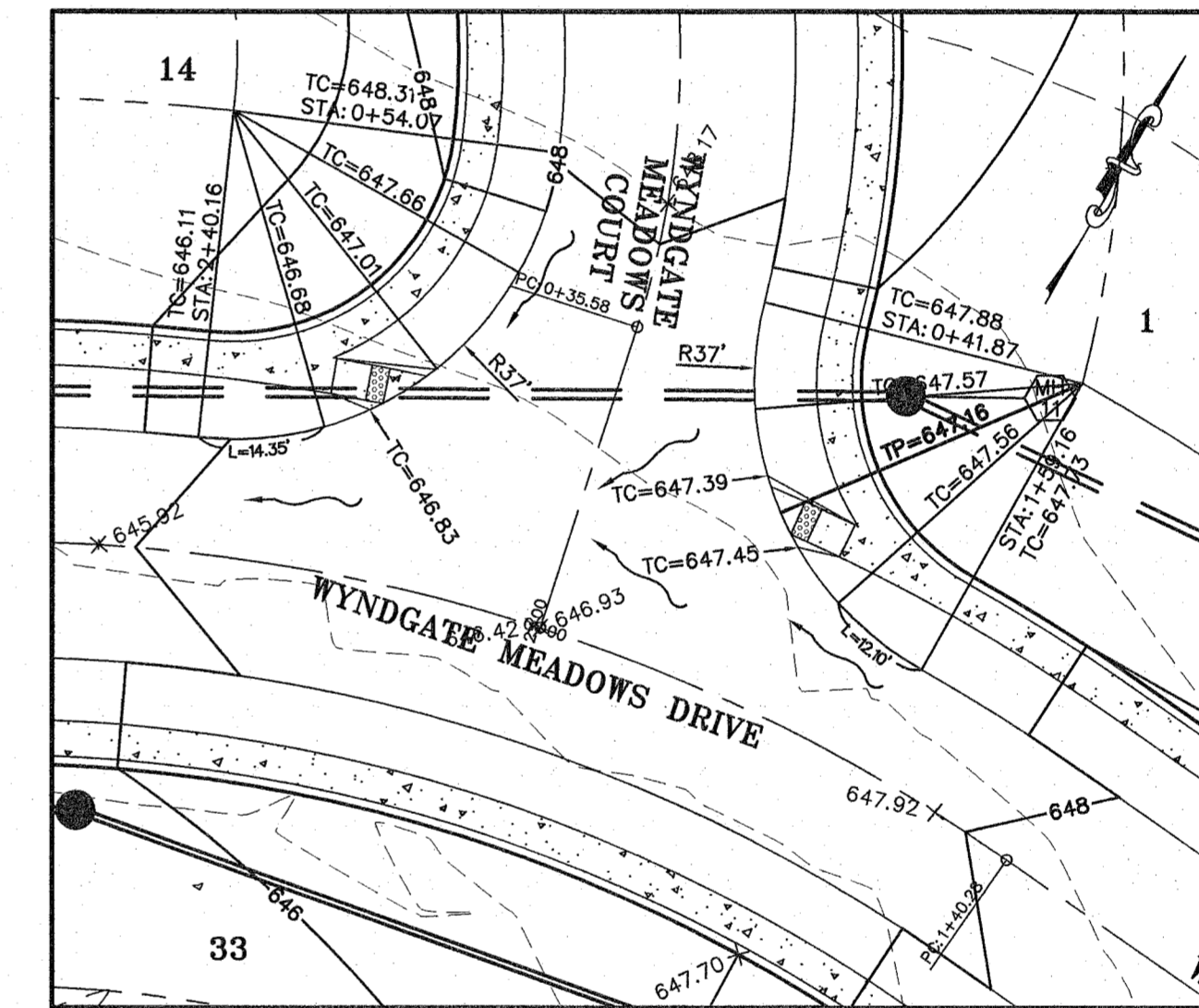
NOTE:
ALL ELEVATIONS ARE TO TOP OF CURB UNLESS OTHERWISE NOTED.
TP=TOP OF PAVEMENT



INTERSECTION DETAIL

SCALE: 1" = 20'

NOTE:
ALL ELEVATIONS ARE TO TOP OF CURB UNLESS OTHERWISE NOTED.
TP=TOP OF PAVEMENT



INTERSECTION DETAIL

SCALE: 1" = 20'

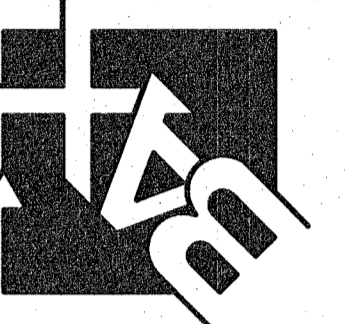
NOTE:
ALL ELEVATIONS ARE TO TOP OF CURB UNLESS OTHERWISE NOTED.
TP=TOP OF PAVEMENT

PROJECT TITLE:

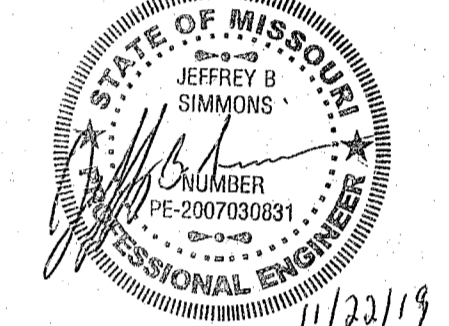
**WYNDGATE
MEADOWS**

Box Project #17-7314 Issue Date: 07/09/2019

ENGINEERING
SURVEYING
231 Point West Blvd.
St. Charles, MO 63301
636-928-6662
FAX 636-928-1716



DISCLAIMER OF RESPONSIBILITY
I hereby specify that the documents intended to be authorized by my seal are limited to this sheet, and I hereby disclaim any responsibility for all other drawings, specifications, estimates, reports or other documents or instruments relating to or intended to be used for any part or parts of the architectural or engineering project of which this sheet is a part.



JEFFREY B. SIMMONS
CIVIL ENGINEER
2007030831
Copyright 2019
Box Engineering Company, Inc.
Authority No. 000655
All Rights Reserved

REVISIONS	
08/08/19	D.C.S.D. P.W.S.D. & CITY COMMENTS
08/30/19	D.C.S.D. P.W.S.D. & CITY COMMENTS
09/25/19	D.C.S.D. & CITY COMMENTS
10/22/19	CITY COMMENTS
11/08/19	CITY COMMENTS
11/22/19	CITY COMMENTS

Developer / Owner:
STRAOR, L.L.C.
9645 Clayton Road
St. Louis, MO 63124
314-667-9400

WARPINGS AND INTERSECTION DETAILS

P+Z No. #18-012166

Approval Date: 06/27/2019

City No. #RSP-19-000010

Page No.

11 of 25