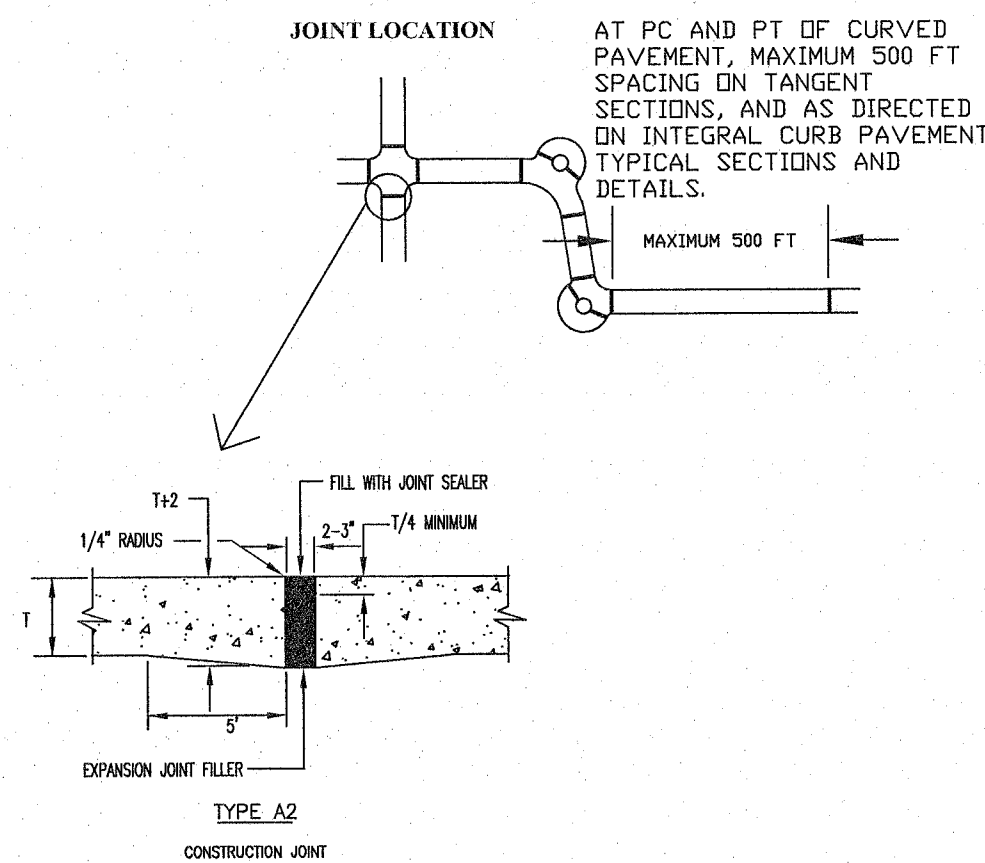


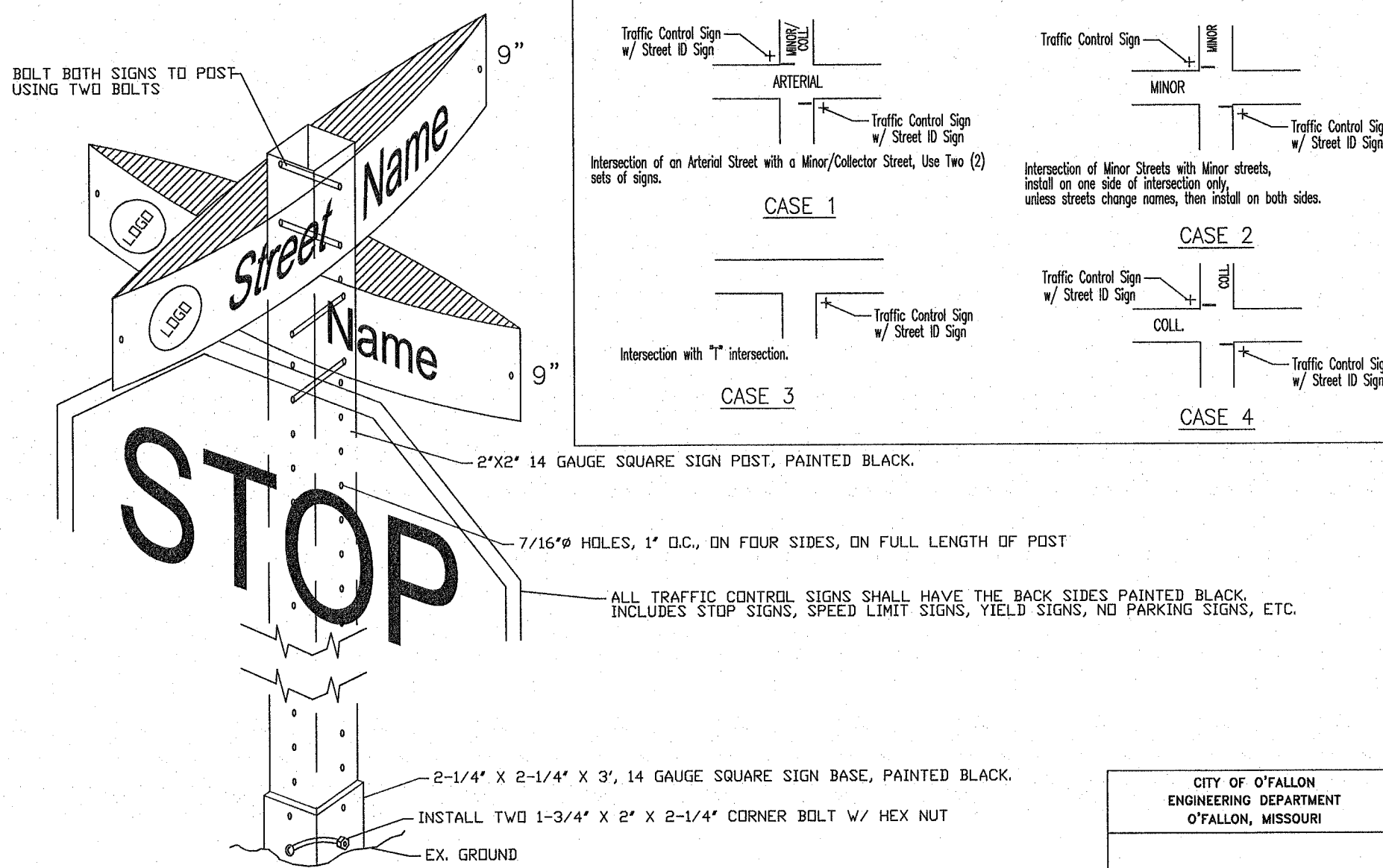
- NOTES:
1. All driveway entrances shall be six (6) inches P.C.C. in depth from the curb to the property line.
  2. All driveway approaches constructed in conjunction with sidewalk shall give the appearance that the sidewalk is continuous. That portion of the driveway approach that doubles as a sidewalk shall have a one-fourth (1/4) inch per foot cross slope the same as the abutting sidewalk.
  3. A two (2) inch expansion joint is required between the street and driveway approach. One (1) additional two (2) inch expansion joint is required between the garage floor and the termination of the driveway.

CITY OF O'FALLON  
 ENGINEERING DEPARTMENT  
 O'FALLON, MISSOURI  
 Integral Curb Detail  
 "B" at Driveway  
 SECTION NO. 405.210 (G)

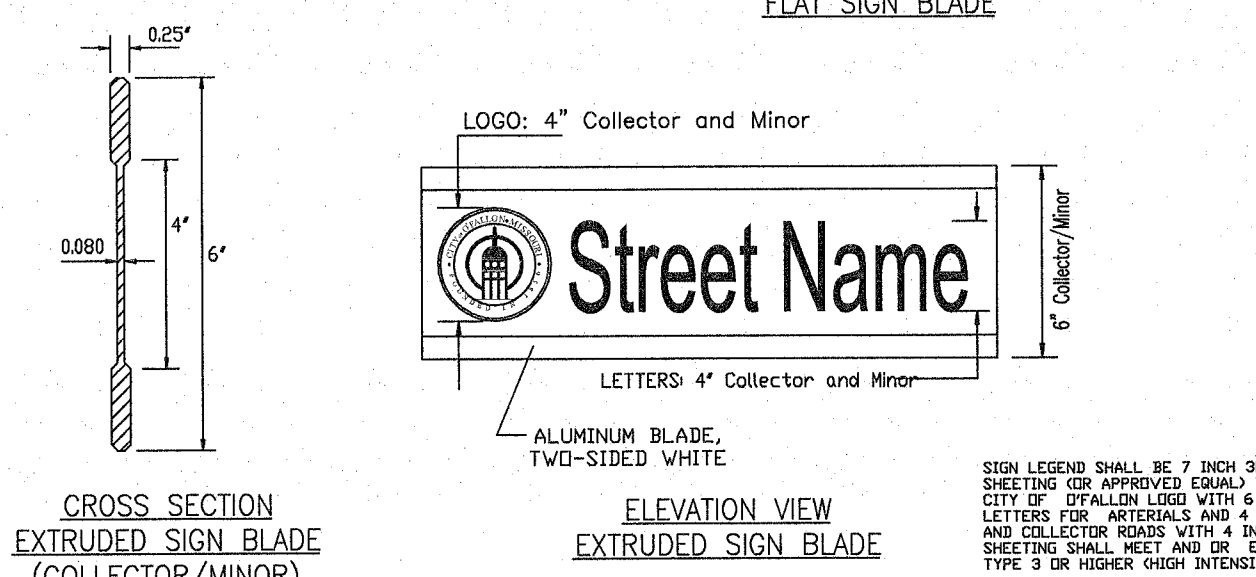
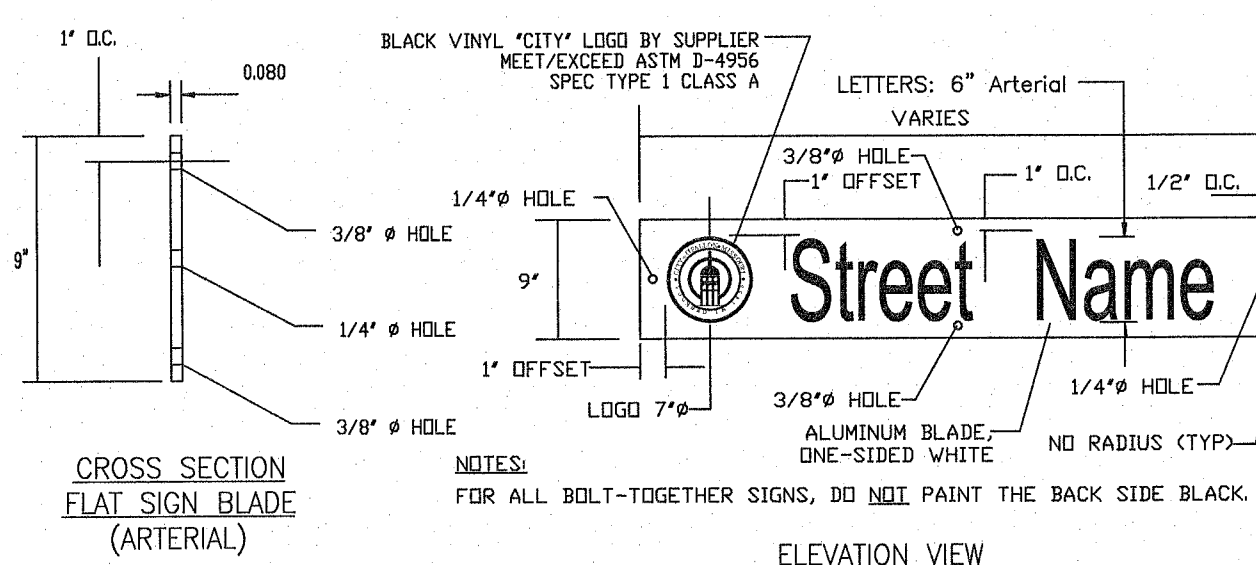


- NOTES:
1. JOINT FILLER COMPOSED OF CELLULAR FIBERS, ASTM D-1751, MAY BE USED AT DRIVEWAY, SIDEWALK, AND SEWER INLET AND MANHOLE LOCATIONS.
  2. SEE "INTEGRAL CURB DETAIL "B" AT DRIVEWAYS" FOR EXPANSION JOINT REQUIREMENTS AT DRIVEWAY CONNECTIONS TO THE STREET AND THE GARAGE.

CITY OF O'FALLON  
 ENGINEERING DEPARTMENT  
 O'FALLON, MISSOURI  
 PAVEMENT CONSTRUCTION  
 DETAIL



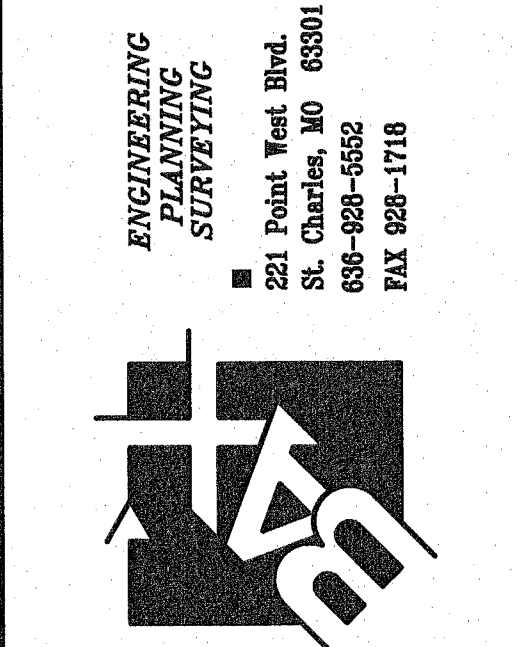
CITY OF O'FALLON  
 ENGINEERING DEPARTMENT  
 O'FALLON, MISSOURI  
 ARTERIAL  
 SIGNS



- GENERAL NOTES:
1. ALL SIGN POST AND BACK OF SIGNS THAT ARE TO BE PAINTED BLACK SHALL USE A PAINT SYSTEM THAT PROVIDES A MINIMUM 7 YEAR LIFE EXPECTANCY.
  2. "CHANNEL LETTERS" SHALL BE AT 1/8" HOLE THICK, OR 1/4" ELECTROSTATIC APPLIED, BLACK POWDER COATED AND BAKED ON PAINT SYSTEM AT 2-3 MILS THICKNESS, OR "CHANNEL LETTERS" SHALL BE 1/8" HOLE THICK, OR 1/4" ELECTROSTATIC APPLIED, BLACK POWDER COATED AND BAKED ON PAINT SYSTEM AT 2-3 MILS THICKNESS, OR APPROVED EQUAL.
  3. ALL SIGN LOCATIONS AND SIZES MUST BE APPROVED BY THE ENGINEERING DIVISION PRIOR TO INSTALLATION.
  4. STREET NAME SIGN PLATES SHALL BE 9 INCHES WIDE FLAT BOLT TOGETHER FOR ANY ARTERIAL INTERSECTIONS AND 1 INCHES WIDE EXTRUDED ALUMINUM PANELS FOR ALL MINOR AND COLLECTOR ROADS. TYPICAL LENGTHS FOR MINOR AND COLLECTOR SIGNS SHALL BE 24, 30 & 36 INCH LENGTHS, OR LONGER AS NEEDED, TO ACCOMMODATE STREET NAME.
  5. SIGN LEGEND SHALL BE 7 INCH ON ENGINEER GRADE SHEETING OR APPROVED EQUAL WHITE REFLECTIVE WITH THE CITY OF O'FALLON LOGO WITH NON-REFLECTIVE LETTERS FOR ARTERIALS AND 4 IN SIGN LEGEND FOR MINOR AND COLLECTOR ROADS WITH 4 IN LETTERS. ALL REFLECTIVE SHEETING SHALL MEET AND EXCEED ASTM D 4956 SPEC, TYPE 3 OR HIGHER HIGH INTENSITY OR DIAMOND GRADE.
  6. "CLEARVIEW" FONT SHALL BE USED ON ALL STREET SIGNS.
  7. SIGN POSTS SHALL BE HEAVY "N" CHANNEL (2 LBS/FT) PAINTED BLACK STEEL POSTS FOR COLLECTOR/MINOR STREETS. ARTERIAL STREETS SHALL HAVE 2" SQUARE POSTS WITH BREAKAWAY ASSEMBLY.
  8. SIGN POSTS SHALL EXTEND A MINIMUM OF 30 INCHES IN THE GROUND AND PLUM.
  9. THE CONTRACTOR SHALL BE RESPONSIBLE FOR VERIFICATION OF UNDERGROUND UTILITIES AND STRUCTURES SHOWN OR NOT SHOWN. PLEASE CONTACT CITY FOR LOCATION OF CITY UTILITIES NOT FOUND BY DIG-RITE SERVICES.
  10. SIGNS SHALL NOT CREATE A SITE DISTANCE PROBLEM OR CONFLICT WITH PEDESTRIAN TRAFFIC.
  11. SPEED LIMIT SIGNS MUST BE AT EVERY ENTRANCE TO A SUBDIVISION ALONG THE LOT LINE BETWEEN FIRST AND SECOND LOT AND APPROXIMATELY EVERY TWO THOUSAND FEET THEREAFTER. ALSO, EVERY CONNECTING SIDE STREET MUST HAVE ONE SPEED LIMIT SIGN APPROXIMATELY EVERY TWO THOUSAND FEET (2000) THEREAFTER.
  12. ALL SIGNS UNLESS OTHERWISE STATED, SHOULD BE CONSTRUCTED AND INSTALLED PER NOTES.

CITY OF O'FALLON  
 ENGINEERING DEPARTMENT  
 O'FALLON, MISSOURI  
 SIGNS,  
 DETAILS AND LOCATIONS

PROJECT TITLE:  
 WYNDGATE  
 MEADOWS



DISCLAIMER OF RESPONSIBILITY  
 I hereby certify that the documents intended to be authenticated by my seal are limited to this sheet, and I hereby disclaim any responsibility for all other drawings, specifications, estimates, reports or other documents or instruments relating to or intended to be used for any part or parts of the architecture or engineering project or survey.

REVISIONS	
08/08/19	D.C.S.D. P.W.S.D. #2 & CLIENT COMMENTS
08/30/19	D.C.S.D. P.W.S.D. #2 & CITY COMMENTS
09/25/19	D.C.S.D. P.W.S.D. #2 & CITY COMMENTS
10/22/19	CITY COMMENTS
11/08/19	CITY COMMENTS
11/22/19	CITY COMMENTS

Developer / Owner:  
 STRAQR, L.L.C.  
 9645 Clayton Road  
 St. Louis, MO 63124  
 314-667-9400

P+Z No. #18-012166  
 Approval Date: 06/27/2019  
 City No. #RSP-19-000010

Page No.  
 20 of 25

ENGINEERS SEAL DOES NOT APPLY TO CITY OF O'FALLON DETAILS ON THIS SHEET.