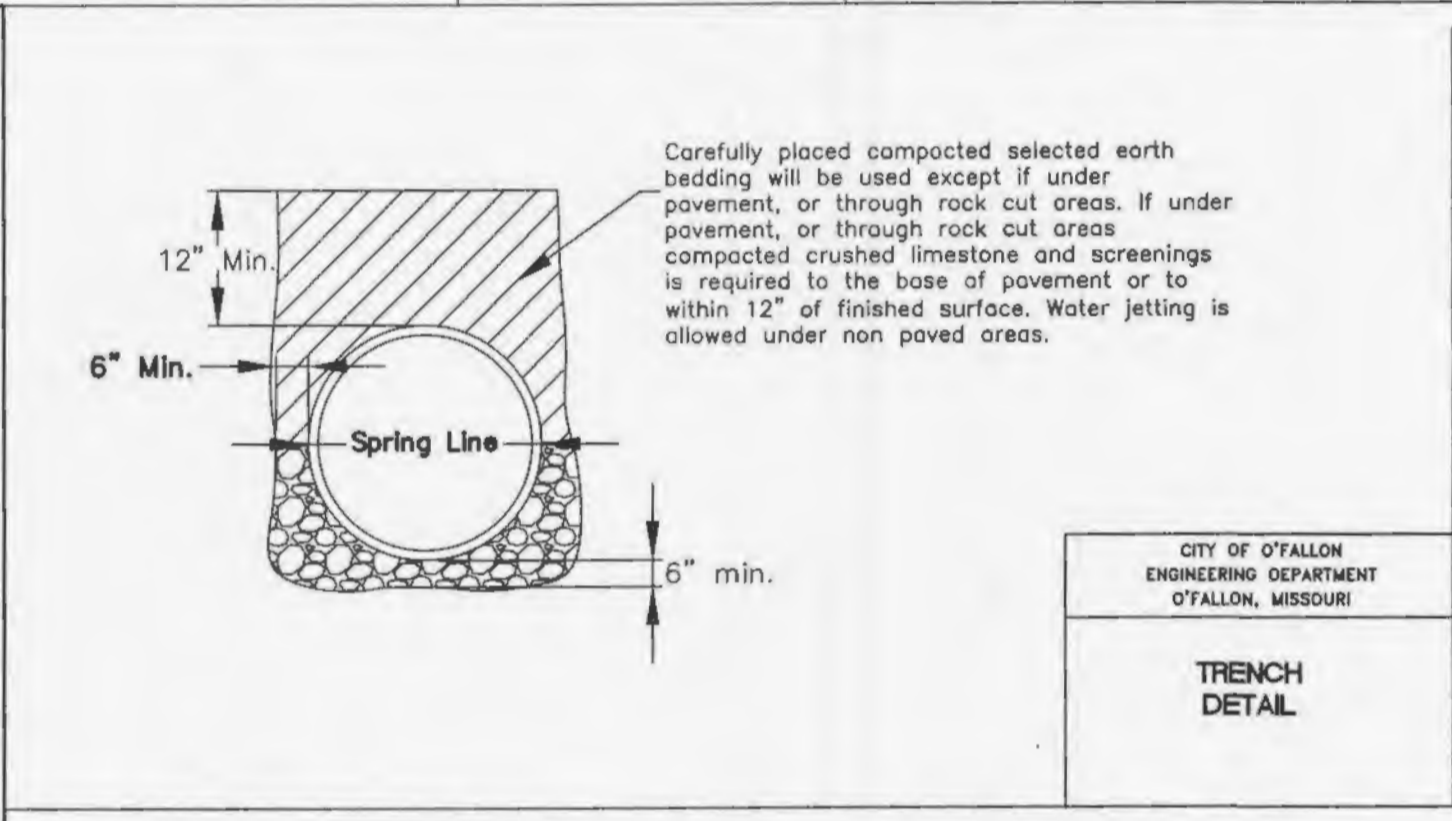
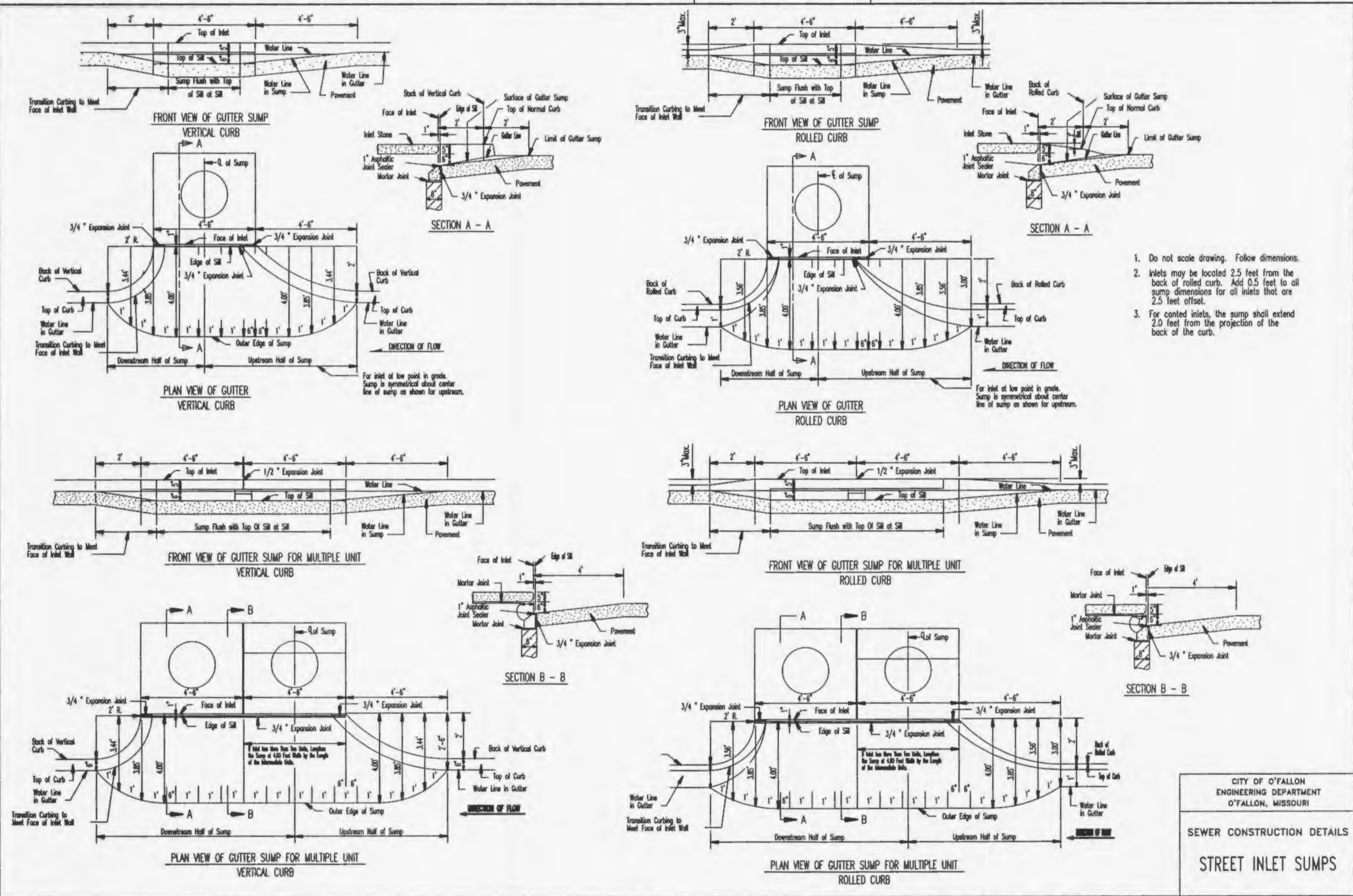
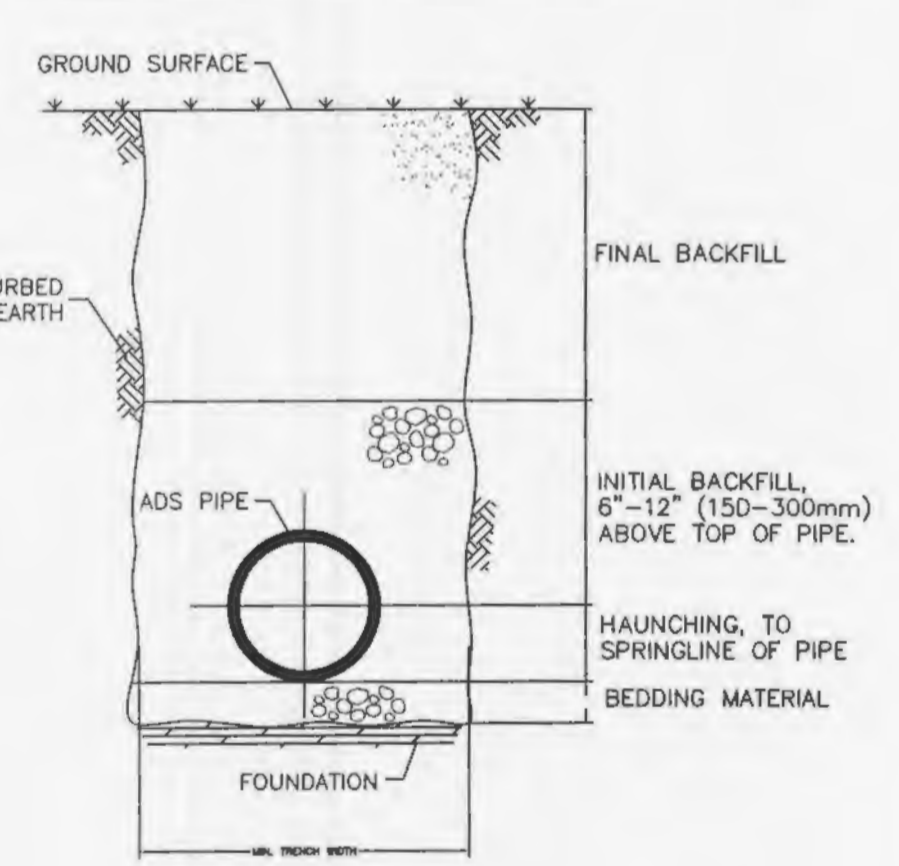


MSD Type 5 Rock Blanket (% By Weight Passing)

| Sieve | Maximum | Minimum |
|----------|---------|---------|
| 12 inch | 90 | 70 |
| 6 inch | 30 | 10 |
| 1/2 inch | 5 | 0 |



HDPE PIPE TRENCH INSTALLATION DETAIL



NOTES:

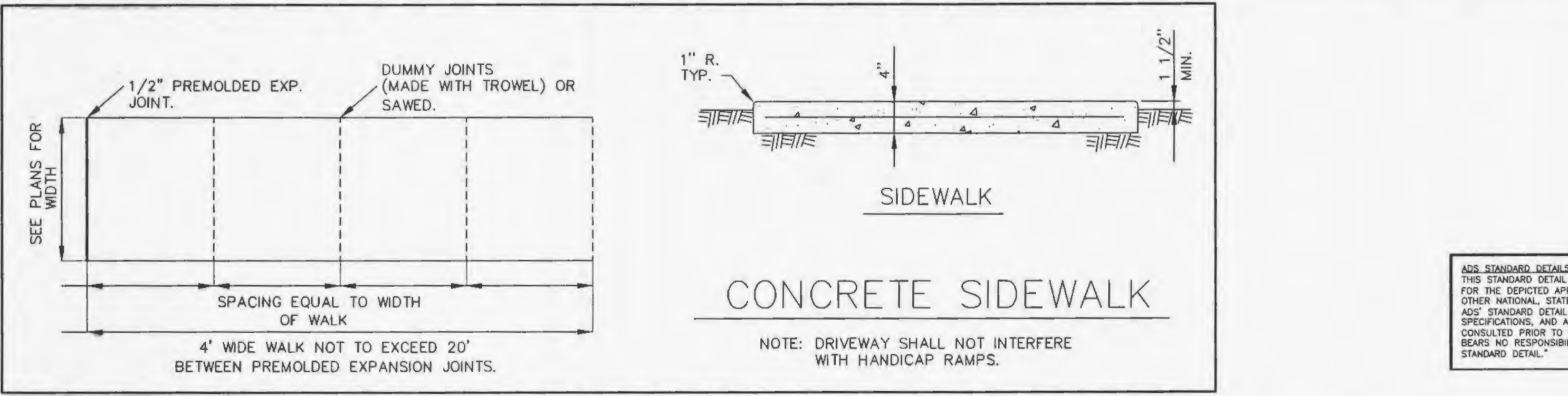
- FOUNDATION: WHERE THE TRENCH BOTTOM IS UNSTABLE, THE CONTRACTOR SHALL EXCAVATE TO A DEPTH REQUIRED BY THE ENGINEER AND REPLACE WITH A FOUNDATION OF CLASS I OR II MATERIAL AS DEFINED IN ASTM D2321, "STANDARD PRACTICE FOR INSTALLATION OF THERMOPLASTIC PIPE FOR SEWERS AND OTHER GRAVITY-FLOW APPLICATIONS," LATEST EDITION; AS AN ALTERNATIVE AND AT THE DISCRETION OF THE ENGINEER, THE TRENCH BOTTOM MAY BE STABILIZED USING A WOVEN GEOTEXTILE FABRIC.
- BEDDING: SUITABLE MATERIAL SHALL BE CLASS I, II OR III AND INSTALLED AS REQUIRED IN ASTM D2321, LATEST EDITION.
 UNLESS OTHERWISE SPECIFIED BY THE ENGINEER, MINIMUM BEDDING THICKNESS SHALL BE 4" (100mm) FOR 4"-24" (100-600mm) AND 4 1/2"-48" (1050-1200mm) CORRUGATED POLYETHYLENE PIPE (CPEP), 6" (150mm) FOR 30"-36" (750-900mm) CPEP.
- HAUNCHING AND INITIAL BACKFILL: SUITABLE MATERIAL SHALL BE CLASS I, II OR III AND INSTALLED AS REQUIRED IN ASTM D2321, LATEST EDITION.
- UNLESS OTHERWISE SPECIFIED BY THE ENGINEER, MINIMUM TRENCH WIDTHS SHALL BE AS FOLLOWS:

| NOMINAL ø in (mm) | MIN. RECOMMENDED TRENCH WIDTH in (mm) |
|-------------------|---------------------------------------|
| 4 (100) | 21 (530) |
| 6 (150) | 23 (580) |
| 8 (200) | 25 (630) |
| 10 (250) | 28 (710) |
| 12 (300) | 31 (790) |
| 15 (375) | 34 (860) |
| 18 (450) | 39 (990) |
| 24 (600) | 48 (1220) |
| 30 (750) | 58 (1480) |
| 36 (900) | 78 (1980) |
| 42 (1050) | 83 (2110) |
| 48 (1200) | 89 (2260) |
| 60 (1500) | 102 (2590) |

5. MINIMUM COVER: MINIMUM RECOMMENDED DEPTHS OF COVER FOR VARIOUS LIVE LOADING CONDITIONS ARE SUMMARIZED IN THE FOLLOWING TABLE. UNLESS OTHERWISE NOTED, ALL DIMENSIONS ARE TAKEN FROM THE TOP OF PIPE TO THE GROUND SURFACE.

| SURFACE LIVE LOADING CONDITION | MINIMUM RECOMMENDED COVER in (mm) |
|--------------------------------|-----------------------------------|
| H25 (FLEXIBLE PAVEMENT) | 12 (300) |
| H25 (RIGID PAVEMENT) | 12 (300) |
| EBD RAILWAY | 24 (610) |
| HEAVY CONSTRUCTION | 48 (1220) |

*TOP OF PIPE TO BOTTOM OF BITUMINOUS PAVEMENT SECTION



ADS STANDARD DETAILS DISCLAIMER: "ADVANCED DRAINAGE SYSTEMS, INC. (ADS) HAS PREPARED THIS STANDARD DETAIL TO DEMONSTRATE ADS' RECOMMENDED INSTALLATION OF ITS PRODUCTS FOR THE DEPICTED APPLICATION. IN ADDITION TO ADS' RECOMMENDATIONS, THERE MAY BE OTHER NATIONAL, STATE OR LOCAL SPECIFICATIONS THAT ARE PERTINENT TO THIS APPLICATION. ADS' STANDARD DETAIL IS NOT INTENDED TO SUPERSEDE ANY NATIONAL, STATE OR LOCAL SPECIFICATIONS, AND ADS RECOMMENDS THAT THOSE REQUIREMENTS BE REVIEWED AND CONSULTED PRIOR TO THE INSTALLATION OF ADS' PRODUCTS. ADS HAS NOT AUTHORIZED, AND IT BEARS NO RESPONSIBILITY FOR, ANY REVISIONS, ALTERATIONS OR DEVIATIONS FROM THIS STANDARD DETAIL."

ADVANCED DRAINAGE SYSTEMS, INC.

| | | | |
|--------------------|-----------------------|---------------------|---------|
| DRAWN BY K.M.J. | APPROVED BY P.X.C. | DRAWING # 5-7-99 | STD-101 |
|--------------------|-----------------------|---------------------|---------|

REVISIONS

| BY | DATE |
|----|------|
| | |

PROJECT TITLE
WYNDGATE VILLAGE B PLAT TWO

PICKETT, RAY & SILVER, INC.
 CIVIL ENGINEERING, LAND SURVEYING, AND NATURAL RESOURCES SERVICES
 22 Richmond Center Court
 St. Peters, MO 65076
 Phone (636) 397-1211 Fax (636) 397-1104
 www.prs.com 1-800-706-3918

ENGINEER'S AUTHENTICATION
 THE RESPONSIBILITY FOR PROFESSIONAL ENGINEERING LIABILITY ON THIS PROJECT IS HEREBY LIMITED TO THE SET OF PLANS AUTHENTICATED BY THE SEAL, SIGNATURE, AND DATE HEREINAFTER ATTACHED. RESPONSIBILITY IS DISCLAIMED FOR ALL OTHER ENGINEERING PLANS INVOLVED IN THIS PROJECT AND SPECIFICALLY EXCLUDES REVISIONS AFTER THIS DATE UNLESS REAUTHENTICATED.

PICKETT, RAY & SILVER, INC. MO LICENSE #00027
DOUGLAS S. TEWMAN PROFESSIONAL ENGINEER LICENSE E-23345

Developer / Owner Information
McBride Wyndgate, LLC
 1601 Springway Ridge Road, Suite 300
 Chesterfield, Missouri 63071

CITY OF O'FALLON STORM AND SIDEWALK DETAILS

P+Z No. 3203
City No.
Page No.
15 of 24

City of O'Fallon Standard Subdivision Notes and Details - June 2010