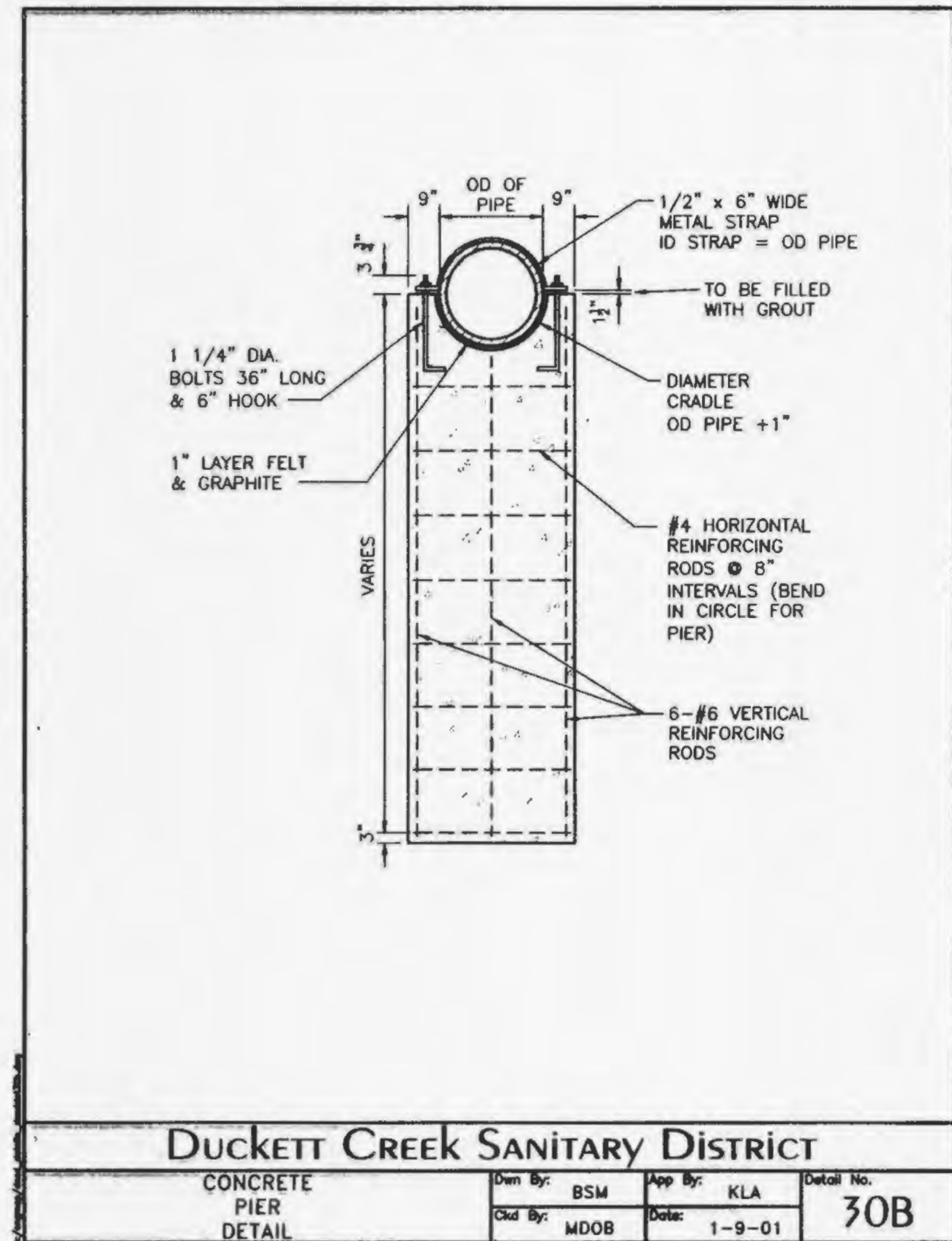
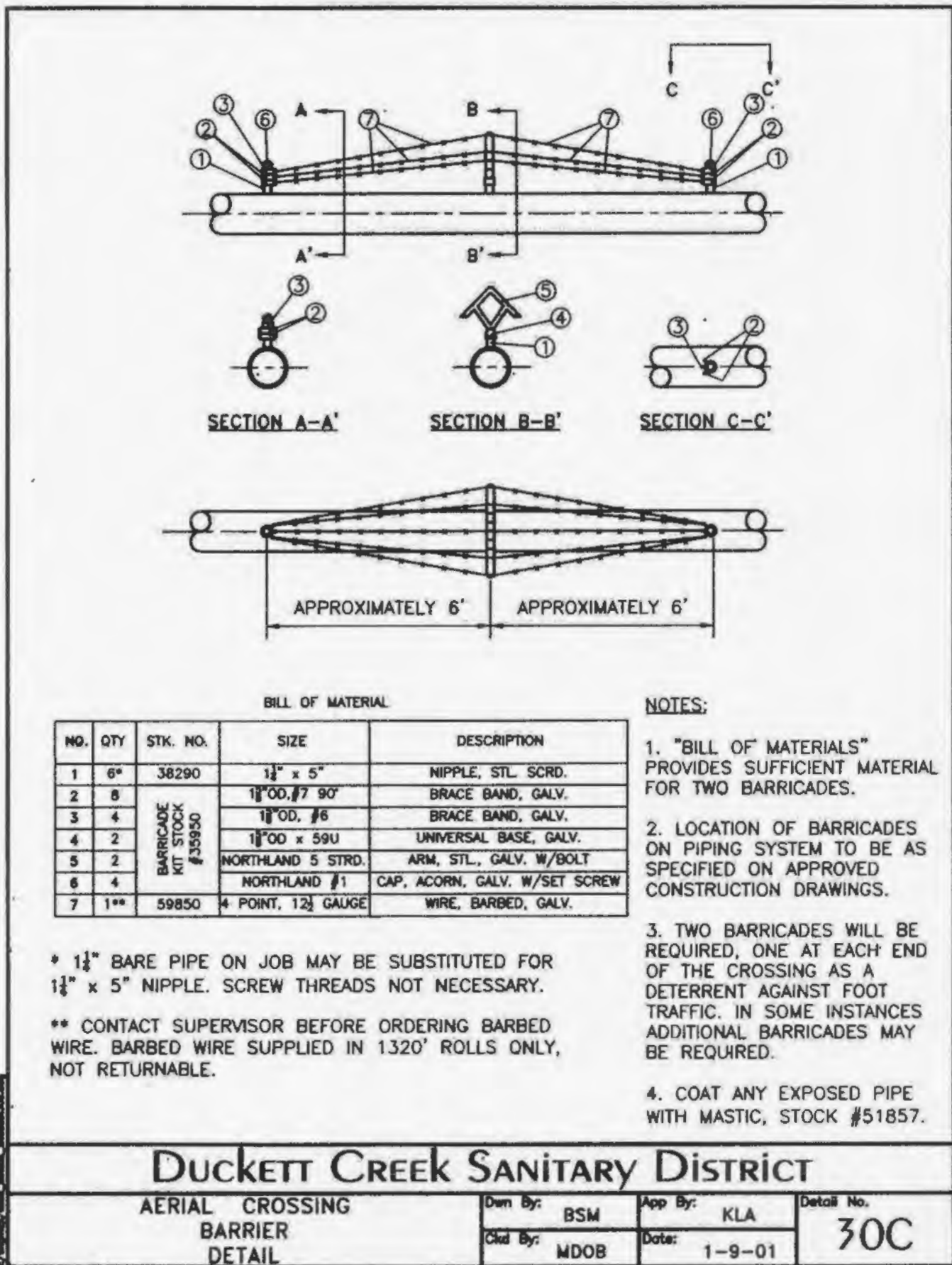


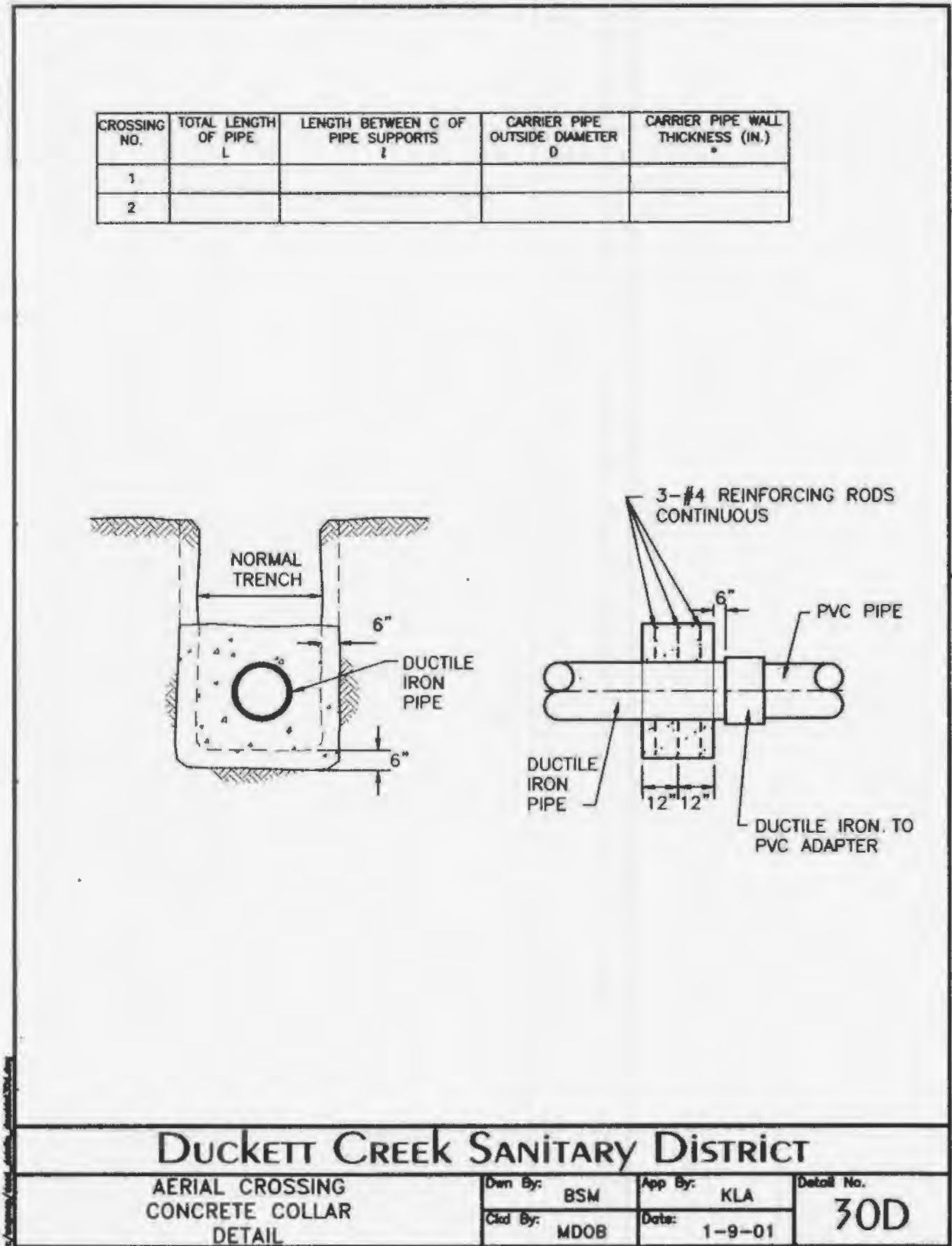
**DUCKETT CREEK SANITARY DISTRICT**  
 AERIAL CREEK CROSSING DETAIL  
 Des By: BSM App By: KLA Detail No. 30A  
 Ckd By: MDOB Date: 1-10-01



**DUCKETT CREEK SANITARY DISTRICT**  
 CONCRETE PIER DETAIL  
 Des By: BSM App By: KLA Detail No. 30B  
 Ckd By: MDOB Date: 1-9-01



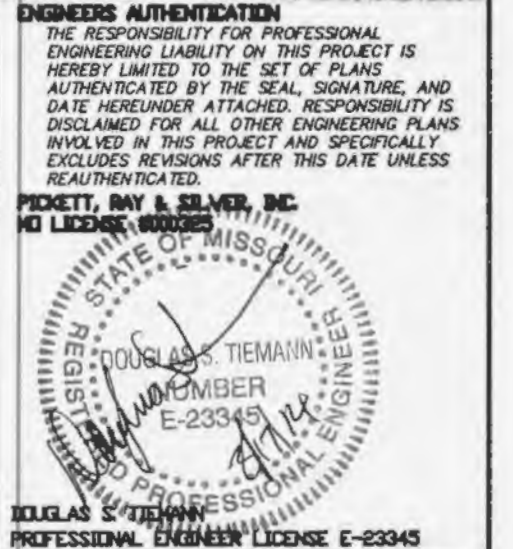
**DUCKETT CREEK SANITARY DISTRICT**  
 AERIAL CROSSING BARRIER DETAIL  
 Des By: BSM App By: KLA Detail No. 30C  
 Ckd By: MDOB Date: 1-9-01



**DUCKETT CREEK SANITARY DISTRICT**  
 AERIAL CROSSING CONCRETE COLLAR DETAIL  
 Des By: BSM App By: KLA Detail No. 30D  
 Ckd By: MDOB Date: 1-9-01

**PROJECT TITLE**  
 WYNDGATE VILLAGE B  
 PLAT TWO

**PICKETT, RAY & SILVER, INC.**  
 CIVIL ENGINEERING, LAND SURVEYING,  
 AND NATURAL RESOURCES SERVICES  
 110 W. Main Street, Suite 201  
 Potosi, Missouri 63450  
 Phone (636) 397-1211 Fax (636) 397-1104  
 www.prs3.com 1-800-708-9818



**Developer / Owner Information**  
 McBride Wyndgate, LLC  
 16081 Shirley Ridge Road, Suite 300  
 Chesterfield, Missouri 63073  
**CITY OF OFALLON - Docket Creek Sanitary District Details**

P+Z No. 3203

City No.

Page No.