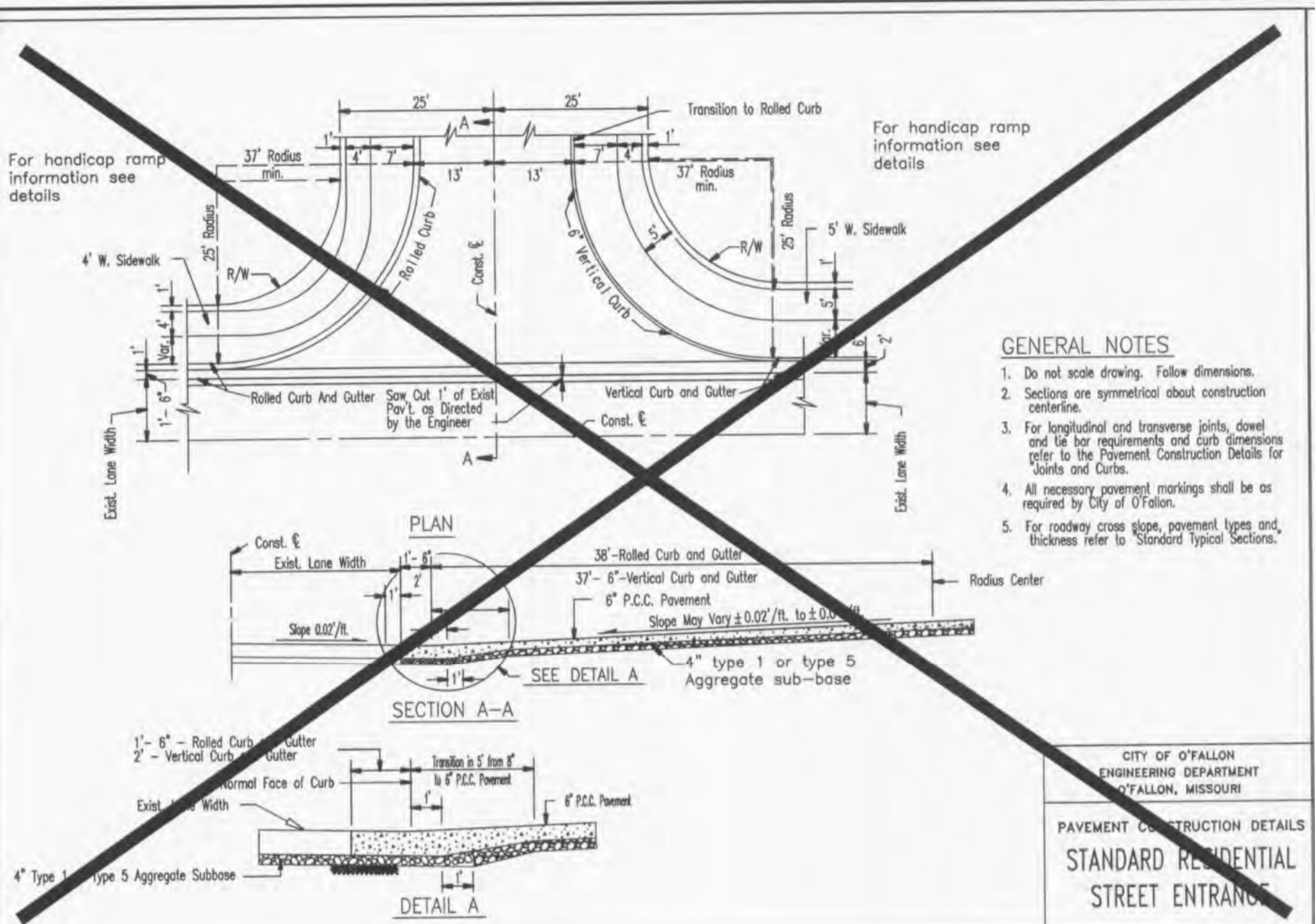


| | ROW Width | Pavement Width | Lane Width | No. of Drive Lanes | Utility Easement | Design Speed |
|--------------------------------|-----------|----------------|------------|--------------------|------------------|--------------|
| Minor Arterial | 84 | 60 | 12 | 2 | 10 | 40 |
| Collector | 60 | 39 | 12 | 3 | 10 | 35 |
| Residential Collector | 56 | 32** | N/A | 2 | 10 | 25 |
| Minor Residential Local Access | 50 | 26 | N/A | 2 | 10 | 25* |

Notes:
 * = Can be varied with City Engineer's approval
 ** = Detail to match minor residential street with wider pavement
 - these requirements may be varied by other City ordinances
 - these standards are minimum standards
 - Parkway options can be provided as indicated above

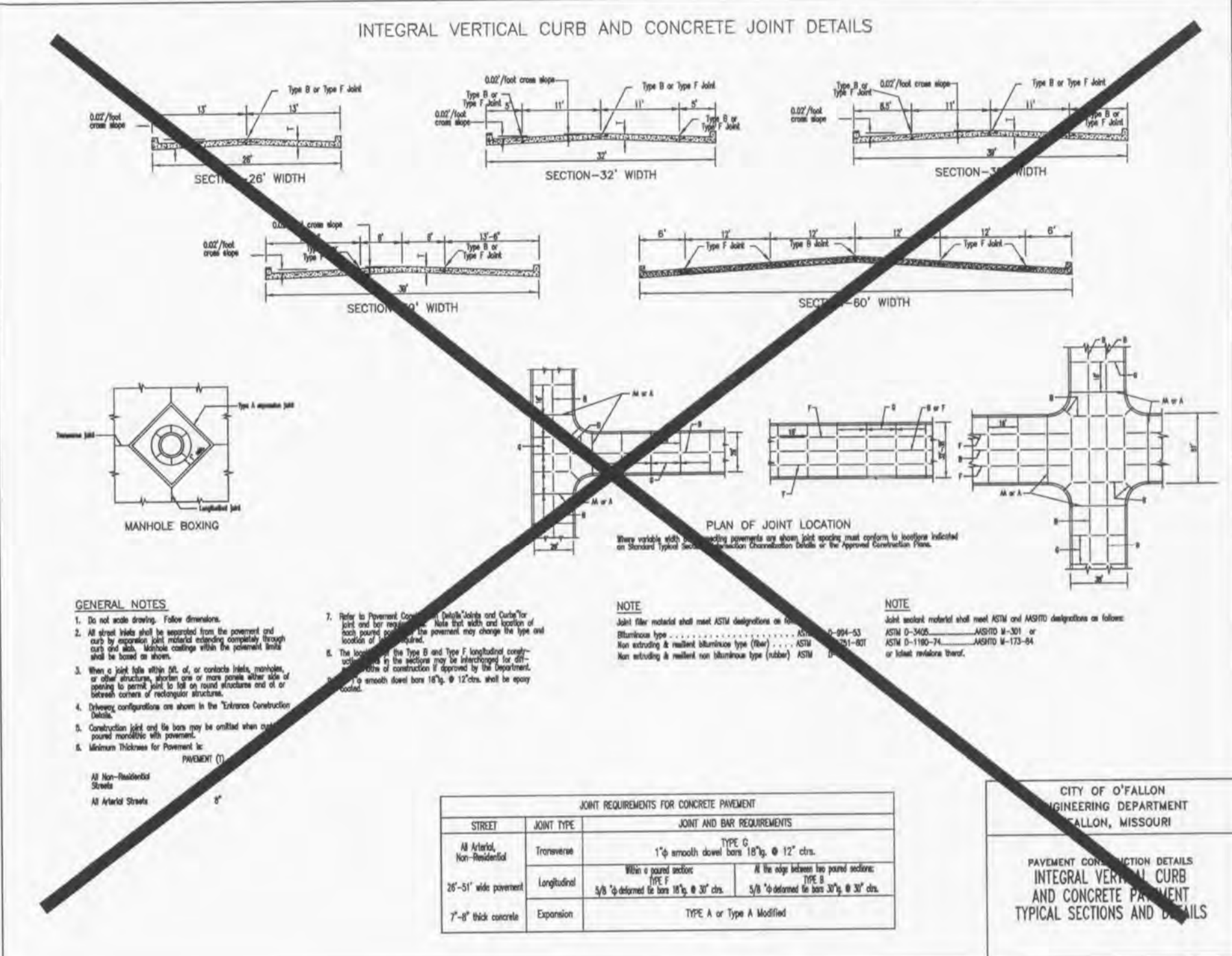
Designer will provide roadway cross section and joint locations in a separate detail drawing.

CITY OF O'FALLON
 ENGINEERING DEPARTMENT
 O'FALLON, MISSOURI
 Typical Pavement Design
 SECTION NO. 405.370



GENERAL NOTES
 1. Do not scale drawing. Follow dimensions.
 2. Sections are symmetrical about construction centerline.
 3. For longitudinal and transverse joints, dowel one (1) bar requirements and curb dimensions refer to the Pavement Construction Details for Joints and Curbs.
 4. All necessary pavement markings shall be as required by City of O'Fallon.
 5. For roadway cross slope, pavement types and thickness refer to Standard Typical Sections.

CITY OF O'FALLON
 ENGINEERING DEPARTMENT
 O'FALLON, MISSOURI
 PAVEMENT CONSTRUCTION DETAILS
 STANDARD RESIDENTIAL STREET ENTRANCE

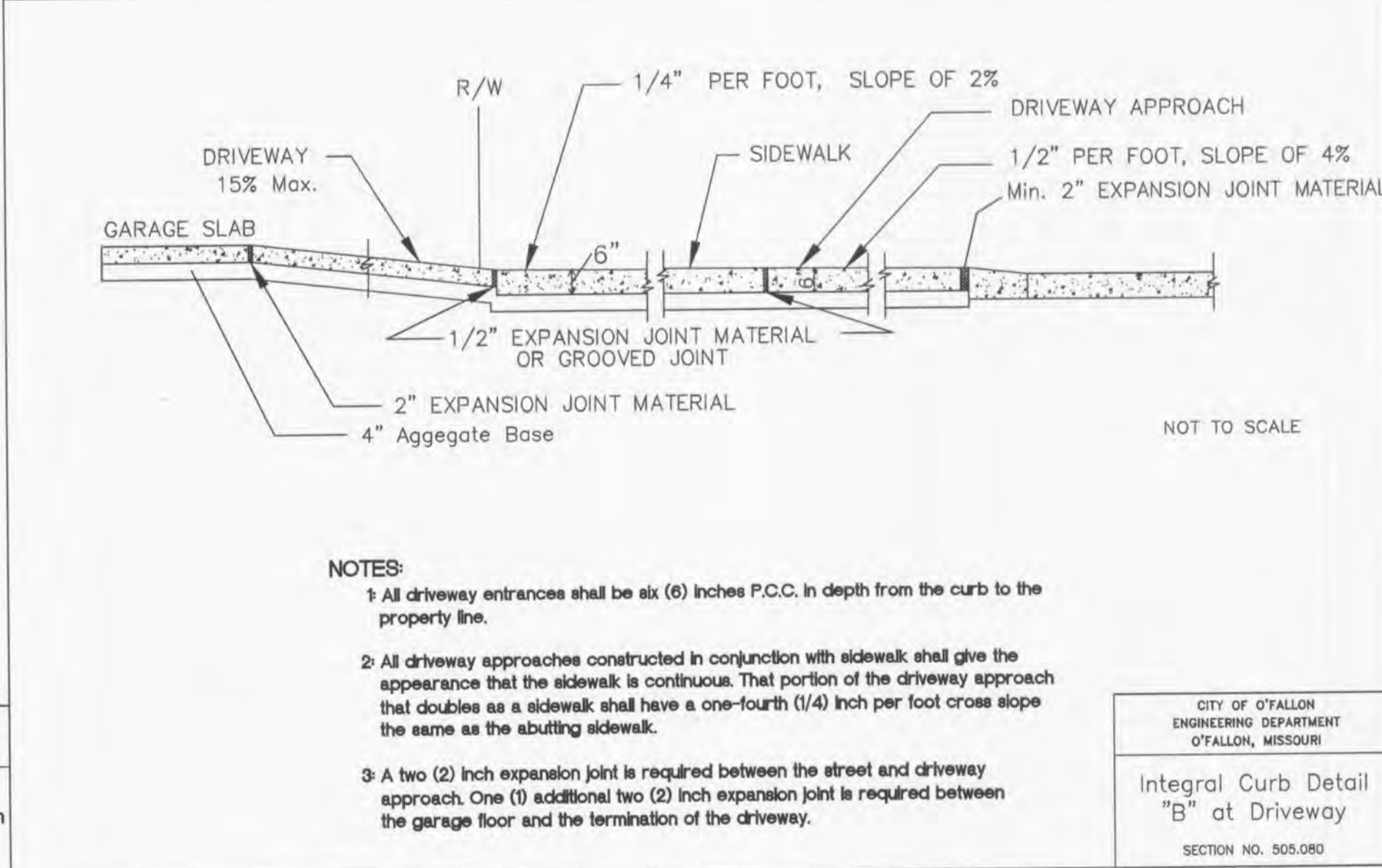


INTEGRAL VERTICAL CURB AND CONCRETE JOINT DETAILS

GENERAL NOTES
 1. Do not scale drawing. Follow dimensions.
 2. All street slabs shall be supported from the subgrade and shall be supported longitudinally by the curb and gutter and laterally by the curb and gutter.
 3. Minimum thickness for pavement is 4\"/>

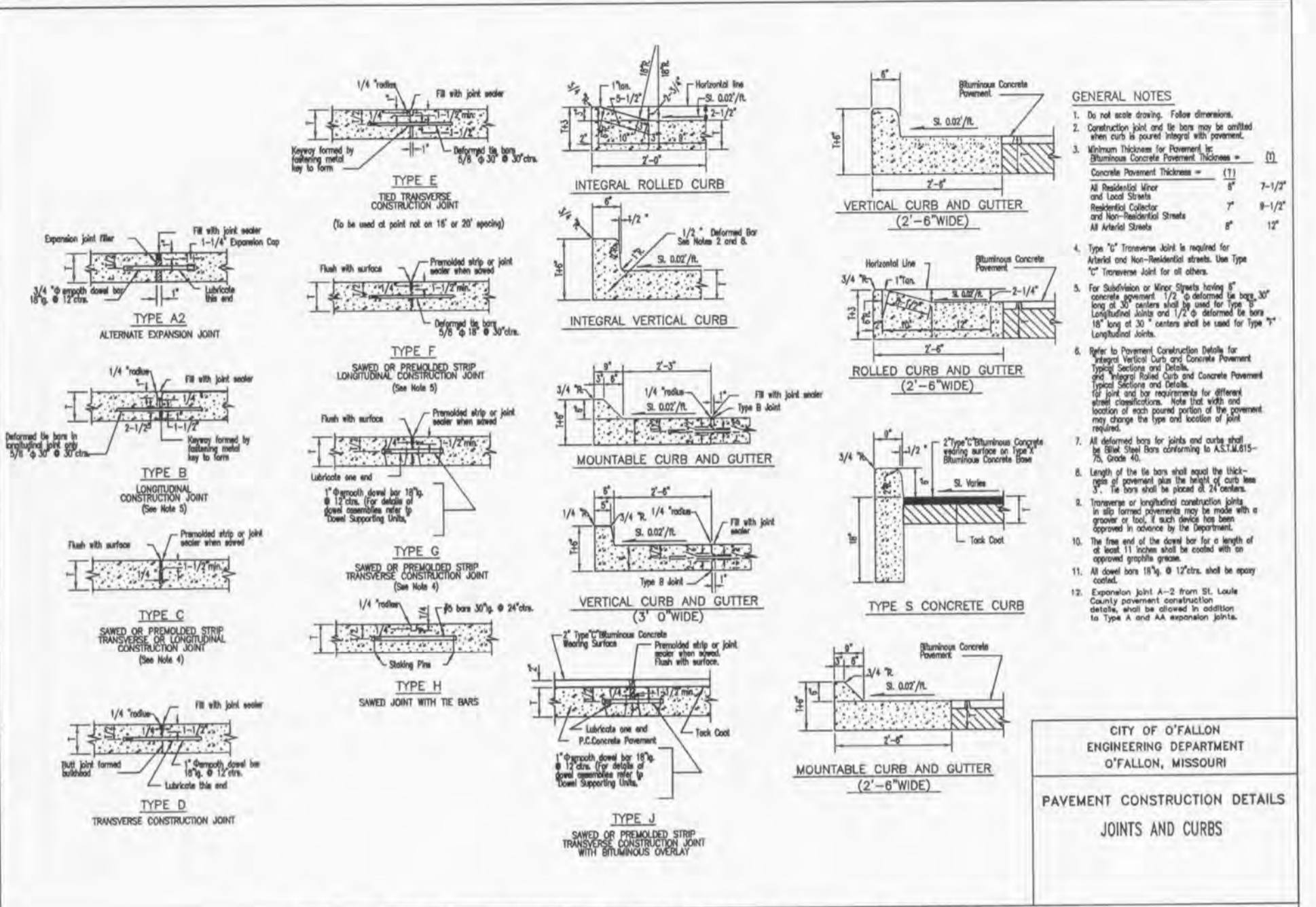
| STREET | JOINT TYPE | JOINT AND BAR REQUIREMENTS |
|--------|------------|----------------------------|
| 48\"/> | | |
| 36\"/> | | |
| 24\"/> | | |
| 18\"/> | | |

CITY OF O'FALLON
 ENGINEERING DEPARTMENT
 O'FALLON, MISSOURI
 PAVEMENT CONSTRUCTION DETAILS
 INTEGRAL VERTICAL CURB AND CONCRETE JOINT TYPICAL SECTIONS AND DETAILS

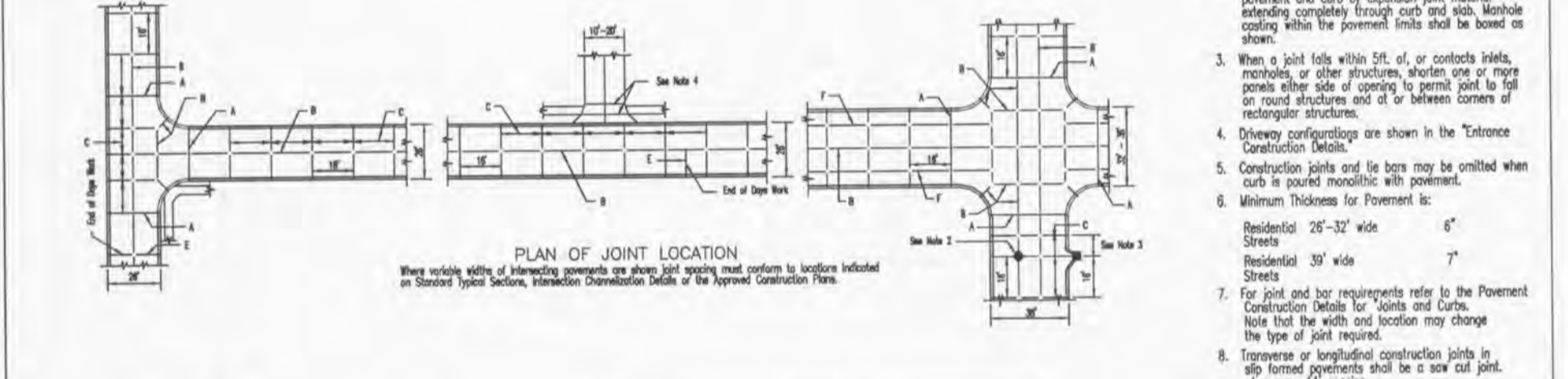
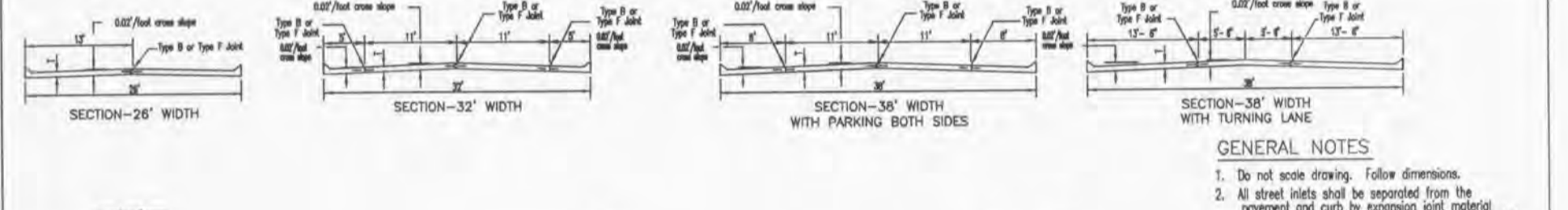


NOTES:
 1. All driveway entrances shall be six (6) inches P.C.C. in depth from the curb to the property line.
 2. All driveway approaches constructed in conjunction with sidewalk shall give the appearance that the sidewalk is continuous. That portion of the driveway approach that doubles as a sidewalk shall have a one-fourth (1/4) inch per foot cross slope the same as the abutting sidewalk.
 3. A two (2) inch expansion joint is required between the street and driveway approach. One (1) additional two (2) inch expansion joint is required between the garage floor and the termination of the driveway.

CITY OF O'FALLON
 ENGINEERING DEPARTMENT
 O'FALLON, MISSOURI
 Integral Curb Detail
 "B" at Driveway
 SECTION NO. 505.080



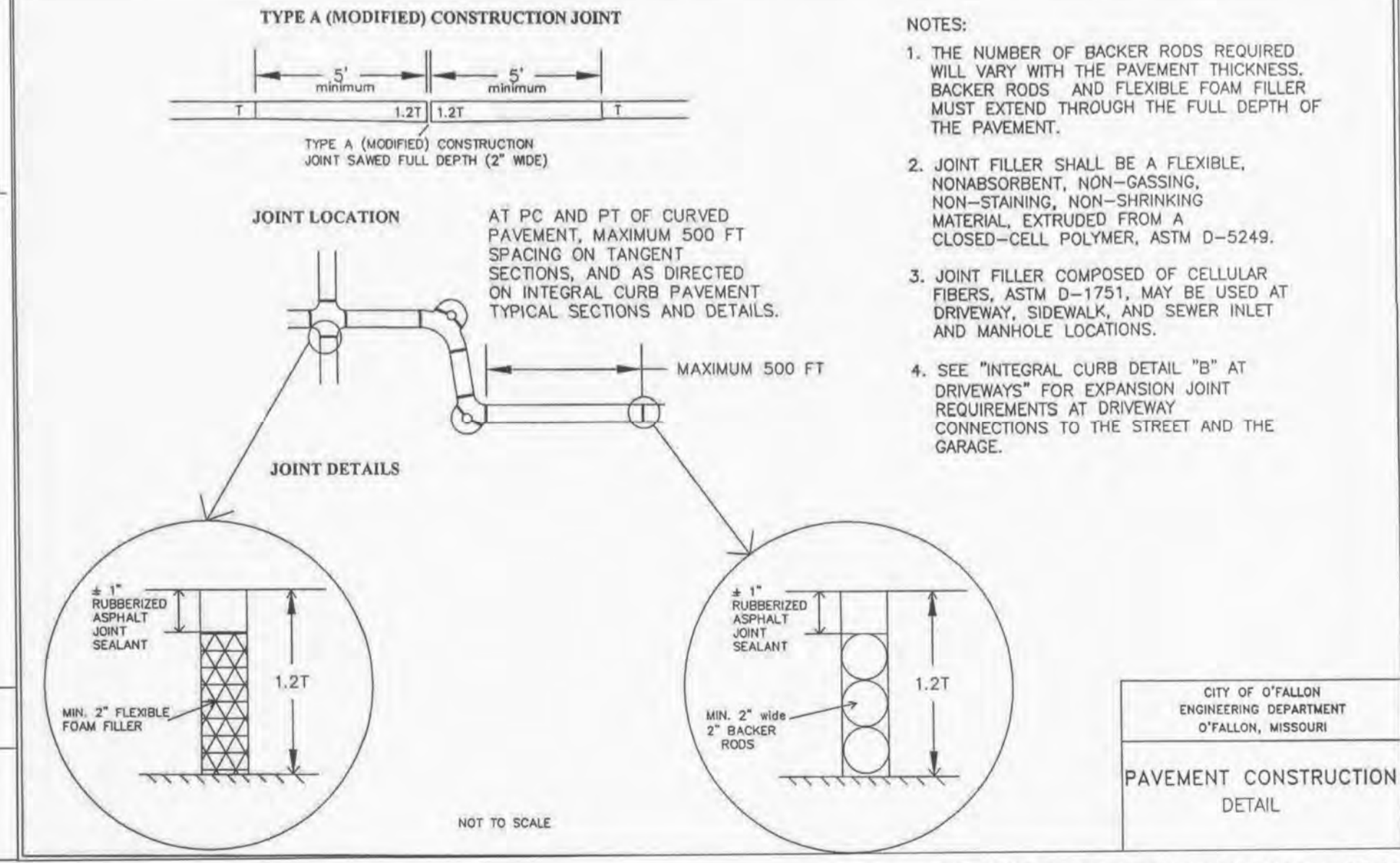
INTEGRAL ROLLED CURB AND CONCRETE PAVEMENT TYPICAL SECTIONS AND DETAILS



| STREET | JOINT TYPE | JOINT AND BAR REQUIREMENTS |
|--------------------|------------|----------------------------|
| 3 LANE RESIDENTIAL | TYPE G | 1\"/> |
| 36\"/> | | |
| 24\"/> | | |
| 18\"/> | | |

GENERAL NOTES
 1. Do not scale drawing. Follow dimensions.
 2. All street slabs shall be supported from the subgrade and shall be supported longitudinally by the curb and gutter and laterally by the curb and gutter.
 3. Minimum thickness for pavement is 4\"/>

CITY OF O'FALLON
 ENGINEERING DEPARTMENT
 O'FALLON, MISSOURI
 PAVEMENT CONSTRUCTION DETAILS
 INTEGRAL ROLLED CURB AND CONCRETE PAVEMENT TYPICAL SECTIONS AND DETAILS



NOTES:
 1. THE NUMBER OF BACKER RODS REQUIRED WILL VARY WITH THE PAVEMENT THICKNESS. BACKER RODS AND FLEXIBLE FOAM FILLER MUST EXTEND THROUGH THE FULL DEPTH OF THE PAVEMENT.
 2. JOINT FILLER SHALL BE A FLEXIBLE, NONABSORBENT, NON-GASSING, NON-STAINING, NON-SHRINKING MATERIAL, EXTRUDED FROM A CLOSED-CELL POLYMER, ASTM D-5249.
 3. JOINT FILLER COMPOSED OF CELLULAR FIBERS, ASTM D-1751, MAY BE USED AT DRIVEWAY, SIDEWALK, AND SEWER INLET AND MANHOLE LOCATIONS.
 4. SEE "INTEGRAL CURB DETAIL "B" AT DRIVEWAYS" FOR EXPANSION JOINT REQUIREMENTS AT DRIVEWAY CONNECTIONS TO THE STREET AND THE GARAGE.

CITY OF O'FALLON
 ENGINEERING DEPARTMENT
 O'FALLON, MISSOURI
 PAVEMENT CONSTRUCTION DETAIL

NOTE: ALL NON-REINFORCED CONCRETE SHALL BE 4,000 p.s.i. AT 28 DAYS.

PROJECT TITLE
WYNDGATE VILLAGE D PLAT TWO

Developer / Owner Information
McBride Wyndgate, LLC
 16081 Swingle Ridge Road, Suite 300
 Chesterfield, Missouri 63077

ENGINEERS AUTHENTICATION
 THE RESPONSIBILITY FOR PROFESSIONAL ENGINEERING LIABILITY ON THIS PROJECT IS HEREBY LIMITED TO THE SET OF PLANS AUTHORIZED BY THE SEAL, SIGNATURE, AND DATE HERETOFORE ATTACHED. RESPONSIBILITY IS DISCLAIMED FOR ALL OTHER ENGINEERING PLANS INVOLVED IN THIS PROJECT AND SPECIFICALLY FOR ANY UNLESS REAUTHORIZED.

PICKETT, RAY & SILVER, INC.
 CIVIL ENGINEERING, LAND SURVEYING, AND NATURAL RESOURCES SERVICES
 22 Hammond Center Court
 St. Peters, MO 65376
 PRRS No. 01267 MCO.02R
 Phone (636) 397-1211 Fax (636) 397-1104
 www.prs3.com 1-800-708-3918

CITY OF O'FALLON PAVEMENT DETAILS
 P+Z No. 3203
 City No. 14-123-SP
 Page No. 19 of 30
 City of O'Fallon Number 14-123-SP